



MICARE POWERLED

- Aluminum Lamp Housing
- Uniform And Round Focus
- Safety Explosion-Proof
- High Color Rendering Index
- Life Time: $\geq 50,000$ hrs

BRILLIANT BY DESIGN

The MICARE PowerLED Surgical Lighting System Provides Meaningful, Clinician-Inspired Advances To Keep Up With Life In Today's OR.

Through Thoughtful Innovation, This Future-Ready System Offers Superior Optical Performance, Laminar Airflow Design

Full Intergration To The OR Environment From Conventional To Theatre Rooms

MICARE PowerLED ensures the clearest and brightest light for surgeons, without distractions from glare.

Allows equipment to be positioned within reach of the surgeon, concealing wires and cables to improve safety and hygiene. Equipment can be easily added, removed and upgraded to meet future requirements.

Thanks to MICARE Power LED High-quality illumination helps to relieve strain, Comfort Light feature, improves visual performance, reduces the sensation of glare and increases the feeling of wakefulness leading to a better working environment

Micare PowerLED 700/500

Evolving Design, Revolutionary Features

Near Perfect Colour Rendition with white and yellow LEDS mix
For the best visualisation of tissue during surgery.

Widely Beam Technology From 15CM-35CM
The largest light beams of any current product with high intensity across the full beam width.

Unique Comfort
A soft illumination of light to reduce eye strain from high contrasts of light intensity.



Designed to Minimise Infections
Easy to clean, sealed light head, remote controls and anti-microbial coatings.

HDI-SDI Camera Optional, Integrated cameras are fully enclosed inside the light head, records for risk, management, and optimize understanding and learning.

Maximum illumination up to 180,000 lux
Stable and constant illumination
Enhanced visibility, diagnosis and treatment



Endoscopy Mode In Deep Illumination For Various Operation Enviromental



Astro Space Design, Working seamlessly with laminar airflow solutions



Removable Sterilizaer Handle Can Be Easily For Internal Camera



5.1INCHES LCD Touch Panel Optional (OEM With LOGO Print Available)



MICARE PowerLED Model	E700/700	E700/500	E500/500
Voltage	95~245V , 50/60HZ	95~245V , 50/60HZ	95~245V , 50/60HZ
Illuminance at distance of 1 m(LUX)	93,000-180,000/93,000-180,000	93,000-180,000/83,000-160,000	83,000-160,000/83,000-160,000
Brightness Adjustable	0-100%	0-100%	0-100%
Lamp Head Diameter	700MM/700MM	700MM/500MM	500MM/500MM
Quantity Of LEDS	80PCS/80PCS	80PCS/48PCS	48PCS/48PCS
Color Temperature Adjustable	3000-5500K	3000-5500K	3000-5500K
Color rendering index Ra	96	96	96
Color rendering index R9(Red)	98	98	98
Light Field Size Adjustable	150-350MM/150-350MM	150-350MM/90-260MM	90-260MM/90-260MM
Total radiant flux density	364W/m2	364W/m2	364W/m2
Endoscopy Mode	YES	YES	YES
Endoscopy Mode LEDS	8PCS/8PCS	8PCS/8PCS	8PCS/8PCS
Illumination For Endo-Mode	10%	15%	18%
LED service life	80,000hrs	80,000hrs	80,000hrs
Main Material	Aluminum	Aluminum	Aluminum
Rotating Angle Of Arm	>540°	>540°	>540°
LED Bulb Power	1w Each Pc	1w Each Pc	1w Each Pc
Input Power	400w	400w	400w
Operating element	Touch Control	Touch Control	Touch Control
Light head protection rating	IP54+FireProof	IP54+FireProof	IP54+FireProof
Depth of illumination L1+12	1400MM	1200MM	1100MM
Lamp weight	700+700=52KGS	700+500=49KGS	500+500=46KGS
Packing	3 Wooden Cartons	3 Wooden Cartons	3 Wooden Cartons
LCD Touch Screen	Optional	Optional	Optional
Back Up Battery (4-6hrs)	Optional	Optional	Optional
Shadow Compensation Function	Optional	Optional	Optional
Internal/External Sony Camera(10X)	Optional	Optional	Optional
Monitor With Extra Arm(21 Inches)	Optional	Optional	Optional
Wall Mounted Control)	Optional	Optional	Optional

MICARE PowerLED Model	E700	E500
Voltage	95~245V , 50/60HZ	95~245V , 50/60HZ
Illuminance at distance of 1 m(LUX)	93,000-180,000	83,000-160,000
Brightness Adjustable	0-100%	0-100%
Lamp Head Diameter	700MM	500MM
Quantity Of LEDS	80PCS	48PCS
Color Temperature Adjustable	3000-5500K	3000-5500K
Color rendering index Ra	96	96
Color rendering index R9(Red)	98	98
Light Field Size Adjustable	150-350MM	90-260MM
Total radiant flux density	364W/m2	364W/m2
Endoscopy Mode	YES	YES
Endoscopy Mode LEDS	8PCS	8PCS
Illumination For Endo-Mode	10%	18%
LED service life	80,000hrs	80,000hrs
Main Material	Aluminum	Aluminum
Rotating Angle Of Arm	>540°	>540°
LED Bulb Power	1w Each Pc	1w Each Pc
Input Power	400w	400w
Operating element	Touch Control	Touch Control
Light head protection rating	IP54+FireProof	IP54+FireProof
Depth of illumination L1+12	1400MM	1100MM
Lamp weight	700+700=52KGS	500+500=46KGS
Packing	3 Wooden Cartons	3 Wooden Cartons
LCD Touch Screen	Optional	Optional
Back Up Battery (4-6hrs)	Optional	Optional
Shadow Compensation Function	Optional	Optional
Internal/External Sony Camera(10X)	Optional	Optional
Monitor With Extra Arm(21 Inches)	Optional	Optional
Wall Mounted Control)	Optional	Optional





MICARE PowerLED Model	E700L(Battery Optional)	E500L(Battery Optional)
Voltage	95~245V , 50/60HZ	95~245V , 50/60HZ
Illuminance at distance of 1 m(LUX)	93,000-180,000	83,000-160,000
Brightness Adjustable	0-100%	0-100%
Lamp Head Diameter	700MM	500MM
Quantity Of LEDS	80PCS	48PCS
Color Temperature Adjustable	3000-5500K	3000-5500K
Color rendering index Ra	96	96
Color rendering index R9(Red)	98	98
Light Field Size Adjustable	150-350MM	90-260MM
Total rediant flux density	364W/m2	364W/m2
Endoscopy Mode	YES	YES
Endoscopy Mode LEDS	8PCS	8PCS
Illumination For Endo-Mode	10%	18%
LED service life	80,000hrs	80,000hrs
Main Material	Aluminum	Aluminum
Rotating Angle Of Arm	>540°	>540°
LED Bulb Power	1w Each Pc	1w Each Pc
Input Power	400w	400w
Operating element	Touch Control	Touch Control
Light head protection rating	IP54+FireProof	IP54+FireProof
Depth of illumination L1+12	1400MM	1100MM
Lamp weight	700+700=52KGS	500+500=46KGS
Packing	3 Wooden Cartons	3 Wooden Cartons
LCD Touch Screen	Optional	Optional
Back Up Battery (4-6hrs)	Optional	Optional
Shadow Compensation Function	Optional	Optional
Internal/External Sony Camera(10X)	Optional	Optional
Monitor With Extra Arm(21 Inches)	Optional	Optional
Wall Mounted Control)	Optional	Optional



Redefine optical performance

Aerospace-based design

How can you deliver more clean airflow to your patient during a surgical procedure? The Osram Power LED allows unobstructed flow of clean air through the lighthouse to dissipate accumulated heat and surgical smoke. Working seamlessly with laminar airflow solutions , it decreases air turbulence through its unique airfoil design. Aerospace-based design, We’ve learned from the best in the aerospace industry for a design that mitigates airflow turbulence while delivering clean air to the patient.

Lightweight aluminum construction
The suspension weights approximately
30% less than previous generations
of steel arms.

Micare Power LED E700/500
CAMERA AND VIDEO SYSTEM

THE NEW DIMENTSION IN VIDEO IMAGES

CAMERA (INTERNAL & EXTERNAL)

More Details, Bettery Visualization

Fascinating Images-With Clear, Sharp Contrours

High Image Quality

- Camera With 10X Optical Zoom With 1950*1080P HD Soluton
- Finely Textured Images With Clear, Sharp Cplors
- Remarkably Better Colors For Better Attention To Detail And A Brilliant Rendition

Ultra High Definition

- Exmor R Sensor - Clearer Images In Every Condition
- Twice As Sensitive As Coneyventional Sensors
- Higher Image Quality In Low Light Conditions

Easy Handling

- Easy Installation And Modification Or Retrofitting Of
- Existing OR Light Sustems
- Mechanical And Electronical Image Rotation
- FI;exible And Indepent Operation Via Remote Control
- Optional Operation Via Wall Control Unit

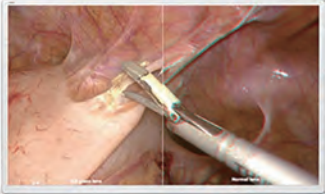
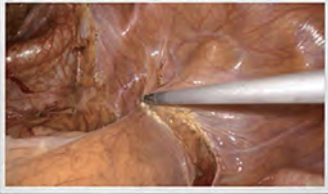


IMAGE SENSOR	SONY 1/2 8TYPE “EXMOR” CMOS, SUPPORT PROGRESSIVE MODE
IMAGE SOLUTION	1920*1080P, APPROX, 2,140,000 PIXELS
VIDEO OUTPUTS	20X OPTICAL ZOOM, 12X DIGITAL ZOOM
ASPECT VIDEO	SDI
FOCUS OPERATING	16:9
WHITE BALANCE	MANUAL & AUTO
REMOTE CONTROL	AUTO, ATW, INDOOR, OUTDOOR, ONE, PUSH WB, MANUAL WB
WIRELESS REMOTE CONTROL	STANDARD ACCESSORIES
HARD DISK FOR STORE	1T
POWER	6.8W
VOLTAGE	DC12-30W, 1.5A
INSTALLATION	INTERNAL & EXTERNAL OPTIONAL
MONITOR	21INCHES HANGING WITH ARM
SOUND COLLECTION	STANDARD



E700/700
Internal Camera

E700/500
Internal Camera

E500/500
Internal Camera



E700
Internal Camera



E500
Internal Camera



E700
Internal Camera



E500
Internal Camera



E700/700
External Camera

E700/500
External Camera

E500/500
External Camera



E700
External Camera



E500
External Camera



Future-ready to evolve with you

What if you had a lighting system that was modular, upgradeable, and expandable so that it could meet your ongoing needs with ease? You've found it. There are ways to customize this system today and in the future.

All of us here at MICARE are committed to you



SIMPLY INGENUOUS

What if you had illumination in the OR that simply supported you throughout each surgical procedure? The MICARE PowerLED does this, delivering excellent color, contrast, clarity, and control.

A unique peninsula design provides optimal illumination at the surgical site, including deep cavity procedures. Advances in LED technology mean that the MICARE PowerLED is able to optimize illumination through fewer LEDs than in the past.

You focus on patients. We focus on you.

MICARE Lighting solutions bring together people and technology so that you have exactly what you need, when you need it, for the intelligent OR of today and tomorrow. From project design to implementation to service support, your success is our highest priority.

LIGHTING
EXPERIENCE



This is to certify that the Quality Management System of

Nanchang Micare Medical Equipment Co., Ltd.

Unified Social Credit Code: 91360106576136496G

Operation Address: Building 16, No.666, Yaohu West 5th Road, Changdong Town, Hi-Tech Industrial Development Zone, Qingshanhu District, Nanchang City, Jiangxi Province, China

Registered Address: Building 16, No.666, Yaohu West 5th Road, Changdong Town, Hi-Tech Industrial Development Zone, Nanchang City, Jiangxi Province, China

applicable to

Manufacture and Sales of Overall Reflection Type Shadowless Operation Theatre Light, Medical Examination Light, Medical Headlights (without installation, within the scope of license)

has been assessed and registered by NQA against the provisions of

ISO 9001:2015

This registration is subject to the company maintaining a quality management system, to the above standard, which will be monitored by NQA.

Certified Clients shall accept regular surveillance assessments, the validity of certificates shall be maintained for the positive result of audit.

The information of this certificate can be checked on CNCA's website (www.cnca.gov.cn)

SNQA's website: www.snqa.com.cn

Managing Director



015



Certificate Number

44624

Date:

02 April 2018

Previous Certificate Expiry:

02 April 2021

The Latest Audit Date:

11 April 2021

Reissue Date:

24 May 2021

Valid Until:

02 April 2024

EAC Code:

19



The use of the UKAS Accreditation Mark indicates accreditation in respect of those activities covered by the accreditation certificate number 015 held by NQA.

NQA is a trading name of NQA Certification Limited, Registration No 09351758. Registered Office: Warwick House, Houghton Hall Park, Houghton Regis, Dunstable, LU5 5ZX, UK.

This certificate is the property of NQA and must be returned on request.



This is to certify that the Quality Management System of

Nanchang Micare Medical Equipment Co., Ltd.

Unified Social Credit Code: 91360106576136496G

Operation Address: Building 16, No.666, Yaohu West 5th Road, Changdong Town, Hi-Tech Industrial Development Zone, Qingshanhu District, Nanchang City, Jiangxi Province, China

Registered Address: Building 16, No.666, Yaohu West 5th Road, Changdong Town, Hi-Tech Industrial Development Zone, Nanchang City, Jiangxi Province, China

applicable to

Manufacture and Sales of Overall Reflection Type Shadowless Operation Theatre Light, Medical Examination Light, Medical Headlights (without installation, within the scope of license)

has been assessed and registered by NQA against the provisions of

ISO 13485:2016

This registration is subject to the company maintaining a quality management system, to the above standard, which will be monitored by NQA.

Certified Clients shall accept regular surveillance assessments, the validity of certificates shall be maintained for the positive result of audit.

The information of this certificate can be checked on CNCA's website (www.cnca.gov.cn)

SNQA's website: www.snqa.com.cn

Managing Director

Certificate Number

44625

Date:

02 April 2018

Previous Certificate Expiry:

02 April 2021

The Latest Audit Date:

11 April 2021

Reissue Date:

24 May 2021

Valid Until:

02 April 2024



015



The use of the UKAS Accreditation Mark indicates accreditation in respect of those activities covered by the accreditation certificate number 015 held by NQA.

NQA is a trading name of NQA Certification Limited, Registration No 09351758. Registered Office: Warwick House, Houghton Hall Park, Houghton Regis, Dunstable, LU5 5ZX, UK.

This certificate is the property of NQA and must be returned on request.



DECLARATION OF CONFORMITY

ACCORDING TO (EU) 2017/745 MEDICAL DEVICE REGULATION

EU Representative

SUNGO Europe B.V.
Olympisch Stadion 24, 1076DE
Amsterdam, Netherlands
SRN: NL-AR-000000247

Conformity Assessment

Conformity Assessment Procedure
Annex II+III of Regulation (EU) 2017/745

Applicable Standards

EN ISO 14971: 2019
EN ISO 15223-1: 2021
EN ISO 20417: 2021
EN 60601-2-41:2009+A11:2011+A1:2015
EN
60601-1:2006+A1:2013+AC:2014+A12:2014
+A2:2020
EN 60601-1-2:2015+A1:2020

Remark

The declaration of conformity is valid in connection with the release technical document CE/MDR-Z129004-01.

All the supporting documentation is retained at the premises of the manufacturer.

The Declaration of Conformity is exclusively under the sole responsibility of the manufacturer.

Manufacturer

Name: Nanchang Micare Medical Equipment Co.,Ltd
Address: Building 16th No.666 Yaohu West 5th Road,
Hi-Tech Zone Nanchang, Jiangxi, China
SRN: /

Product Information

Name: Surgical Light
Model: See annex
GMDN: 12276
EMDN: Z129004
Basic UDI-DI: /
Classification: Class I, According to Rule 13, Annex VIII, Regulation (EU) 2017/745

Declaration

We herewith declare that the above-mentioned products meet the requirements of Medical Device Regulation (EU) 2017/745 and the applicable standards above.

Signature:

Date:2022/06/20

Position: GM

Place: Jiangxi / China



Annex

Product Name	Model
Surgical Light	<p>E500, E500L, E500G, E700, E700L, E700G, E700/500, E700/700, E500/500</p> <p>MK500, MK500L, MK500G, MK700, MK700L, MK700G, MK700/500, MK700/700, MK500/500</p> <p>MR500, MR500L, MR500G, MR700, MR700L, MR700G, MR700/500, MR700/700, MR500/500</p> <p>MKT500, MKT500L, MKT500G, MKT700, MKT700L, MKT700G, MKT700/500, MKT700/700, MKT500/500</p> <p>MRT500, MRT500L, MRT500G, MRT700, MRT700L, MRT700G, MRT700/500, MRT700/700, MRT500/500</p> <p>E520, E520L, E520G, E720, E720L, E720G, E720/520, E720/720, E520/520</p> <p>E1, E1(G), E1(L), E2, E2(G), E2(L), E3, E3(G), E3(L), E4, E4(G), E4(L), E6, E6(G), E6(L), E1/1, E2/1, E2/2, E3/1, E3/2, E3/3, E4/1, E4/2, E4/3, E4/4, E500/1, E500/2, E500/3, E500/4, E6/1, E6/2, E6/3, E6/4, E6/500, E6/6, E700/1, E700/2, E700/3, E700/4, E700/6, Or customized</p>







Nanchang Micare Medical Equipment Co.,Ltd



Add: No. 666 Yaohu West 5th Road, Hi-Tech Zone,
Nanchang, Jiangxi, China

Website: www.micare-med.com





Specification PowerLED E700/700 - Double Dome Ceiling mounted Surgical Light

Light Intensity At (1M)	93,000-180,000 lux
LED Bulb Quantity	80PCS
Bulb Life (HRS)	≥ 80,000
Color Temp (Kelvin)	3000 ~5500K (4 Steps Adjustable)
Color Rendering Index (Ra)	≥ 96
Light Beam Depth (MM)	1400
Diameter of Spot (MM)	150-350
Light Adjust Range	0% - 100% (12 Steps)
LED Bulb Power	80W
Temperature rise (surgical field)	≤ 1℃
Working distance (MM)	700 -1500
Vertical movement (MM)	≥ 800
Light head freedom of movement	≥ 4°
Voltage	AC100-240V 50/60HZ
Ceiling Height (M)	3 - 4
Back Up Battery	Optional
Sony Internal Camera (10X)	Optional