

LIFE-HAMMER®

WE PROTECT LIFE



BREAKING TEMPERED CAR GLASS



CUTTING SEATBELTS



SAFETY HAMMER CLASSIC

About 40 years ago we developed the original car safety hammer, also known as the SAFETY HAMMER CLASSIC. Now we have taken the opportunity to improve the user experience and the functionality within the iconic updated CLASSIC design.

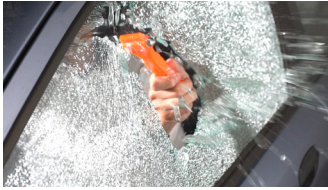


LIFE-HAMMER®

SAFETY HAMMER CLASSIC & CLASSIC GLOW



+ The original safety hammer updated and improved in 2021.



+ Double sided, hardened carbon steel hammerhead.

+ TÜV certified according to new German standards.



+ Glow in the dark yellow/orange available in retail packaging.



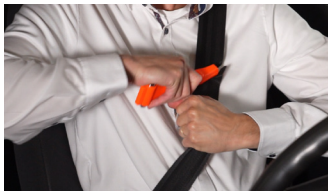
+ Breaking tempered car glass, cutting seat belts.



+ Available in yellow, orange and red.



+ Advanced seat belt cutter



+ Easy installation

The QUICK CLICK SYSTEM is standard in the retail packaging. In bulk all shown mounting systems are available. Only with the individual PRO-adapter screws are required.

Clamp fastener for car door
QUICK CLICK SYSTEM



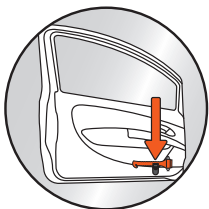
Clamp fastener for middle console
EASY FIX SYSTEM



Fastening with screws
PRO ADAPTER

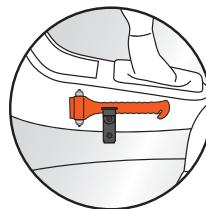


QUICK CLICK SYSTEM
CAR DOOR



With this system you can mount the safety hammer on the inside of your car door. Rotate the small click-adapter for optimal positioning. It is possible to use the QUICK CLICK SYSTEM in combination with the PRO ADAPTER. No screws are required to mount this system in your car.

EASY FIX SYSTEM
MIDDLE CONSOLE



With this system you can mount the safety hammer on the middle console of your car. Rotate the small click-adapter for optimal positioning. It is possible to use the EASY FIX SYSTEM in combination with the PRO ADAPTER. No screws are required to mount this system in your car.

www.lifehammerproducts.com