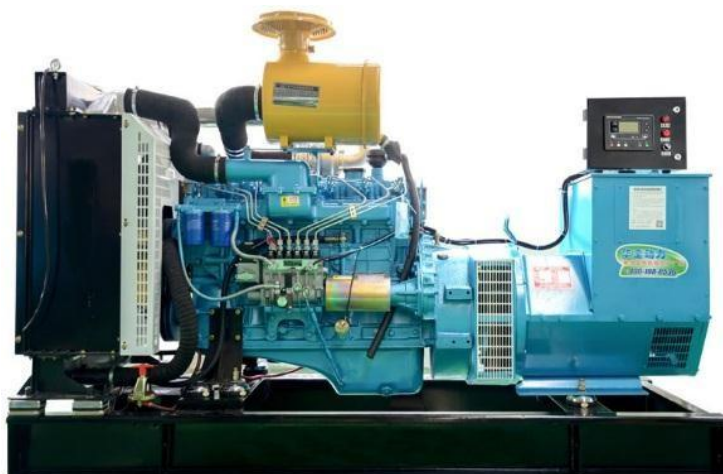


MODEL	JW150GF	
Prime Power(50Hz)	150KW	187.5KVA
Standby Power(50Hz)	165KW	206.25KVA

### Standard Features

#### General Features:

- ◆ Engine (Ricardo R6110AZLD)
- ◆ Radiator 40°C max, fans are driven by belt, with safety guard
- ◆ 24V charge alternator
- ◆ Alternator: single bearing alternator IP23, insulation class H/H
- ◆ Absorber
- ◆ Dry type air filter, fuel filter, oil filter
- ◆ Main line circuit breaker
- ◆ Remote control panel
- ◆ Batteries, rack and cable
- ◆ Ripple flex exhaust pipe, exhaust siphon, flange, muffler
- ◆ Soundproof Enclosure: Painted in an electrostatic field with increased soundproofed, weather-resistant, high-temperature-resistant, and non-flammable
- ◆ Automatic Transfer Switch
- ◆ Trailer type
- ◆ User manual



### Generator Ratings

Voltage(V)		Hz	Phase	P.F (cos $\phi$ )	Prime Amps (A)	Prime Ratings (KW/KVA)	
440	254	50	3	0.8	246.04	150	187.5
415	240	50	3	0.8	260.86	150	187.5
400	230	50	3	0.8	270.64	150	187.5
380	220	50	3	0.8	284.89	150	187.5

● Prime Power (PRP): Prime power is available for an unlimited number of annual hours in variable load application, in accordance with GB/T2820-97 (eqv ISO8528) ; A 10% overload capability is available for a period of 1 hour within a 12-hour period of operation.

● Standby Power Rating (ESP): The standby power rating is applicable for supplying emergency power for the duration of a utility power interruption. No overload, utility parallel or negotiated outage operation capability is available at this rating.

### Standard Features

Weifang Junwei Machinery Co., Ltd provides a full line of brand new and high quality products. Each and every unit is strictly factory tested. Warranty is according to our standard conditions: ① 24 months, counted on the day Junwei Machinery sold to the first buyer; ② Two years after installation; ③ 2000 running hours (accumulated); subject to the earlier one. Service and parts are available from Junwei Machinery or distributors in your location.

## Ricardo Generator

**JW150GF**

### Engine Data

Manufacturer / Model: Ricardo R6110AZLD, 4-stroke

Air Intake System: Turbocharged

Type: Diesel, Four-stroke, Direct injection, 6 Cylinders, Wet cylinder, Water cooling, with a fuel preheater and a low oil level sensor with automatic engine shutdown

Cylinder Type: Water-cooled cylinder liner

Start mode: Electric starting

Cooling mode: Closed water cooling

Displacement: 8.3

Bore and Stroke: 110\*125(mm)

Compression Ratio: 16.5:1

Rated RPM: 1500rpm

Max. Standby Power: 192KW

Governor Type: Electronic / Mechanical

### Exhaust system

Max Back Pressure: 10kPa

### Air Intake System

Max Intake Restriction: 5kPa

### Fuel System

100%( Prime Power) Load: 225g/kw.h

### Oil System

Total Oil Capacity: 22L

### Cooling System

Total Coolant Capacity: 36L

### Alternator Specification

Compliance with GB755, BS5000, VDE0530, NEMAMG1-22, IED34-1, CSA22.2 and AS1359 standards.

### Alternator Data

Manufacturer: WEIFANG JUNWEI MACHINERY CO., LTD

Number of Phase: 3

Connecting Type: 3 phase and 4 wires, "Y" type connecting

Number of bearing: 1

## Ricardo Generator

JW150GF

Power factor: 0.8

Protection grade: IP23

Altitude :  $\leq 1000\text{m}$

Exciter type: Brushless, self-exciting

Insulation class: H

Telephone influence factor(TIF):  $\leq 50$

THF:  $\leq 2\%$

Alternator Capacity: 187.5KVA Alternator

Efficiencies: 85%

Air Cooling Flow: 0.09m<sup>3</sup>/s

Adjusting rate of stable voltage:  $\pm 0.5\%$

### Generating Set Data

Voltage Regulation:  $\geq \pm 5\%$

Voltage Regulation, Stead State:  $\leq \pm 1\%$

Sudden Voltage Warp:  $\leq +20\%$

Sudden Voltage Warp:  $\leq -15\%$

Voltage Stable Time:  $\leq 5\text{S}$

Voltage unbalance:  $\leq 1\%$

Frequency Regulation, Stead State:  $\leq 5\%$

Frequency Waving:  $\leq 0.5\%$

Sudden Frequency Warp:  $\leq +10\%$

Transient frequency deviation:  $\leq -7\%$

Frequency Recovery Time:  $\leq 3\text{S}$

### Sockets

3 (1 x 400V 63A; 1 x 400V 32A; 1 x 230V 16A)

### Standard Features

◆ Standard Auto Control System

◆ Starting batteries

◆ Exhaust System

◆ MCCB

◆ Battery switch

◆ Shock pad

◆ Special tool

◆ Oil Drain Valve

◆ Documents

**Trailer type****Trailer Construction and Mobility Features**

The generator set is mounted on a robust trailer chassis, equipped with 2 axles and a parking brake, ensuring stability and safe transport. The trailer is fitted with adjustable support legs and leveling jacks to provide secure positioning during operation. A towing hitch with adjustable height is included, enabling compatibility with different types of vehicles. The design ensures reliable mobility, ease of transportation, and quick deployment in various field conditions.

**Dimension & Weight****Open Type**

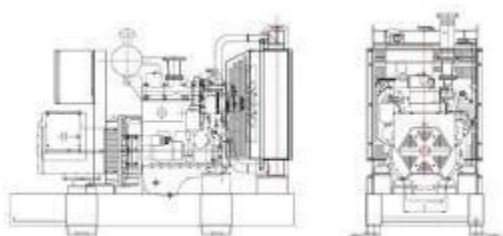
Overall Size: 2400(mm) × 800 (mm) × 1600 (mm)

Weight: 1800kg

**Soundproof Type**

Overall Size: 3200 (mm) × 1100 (mm) × 1770 (mm)

Weight: 2400kg



## Control Panel



Weifang Junwei Machinery Co., Ltd uses micro processing technique integrating digital, intelligent and network techniques which can carry out functions including auto start/stop, data measure, alarming. The controller uses Smartgen LCD display, optional Chinese and English/ Russian/ Spanish display interface with operation easy and reliable. It can be widely used in all types of generator automatic control system for compact structure, advanced circuits, simple connections and high reliability.

## Typical Projects

