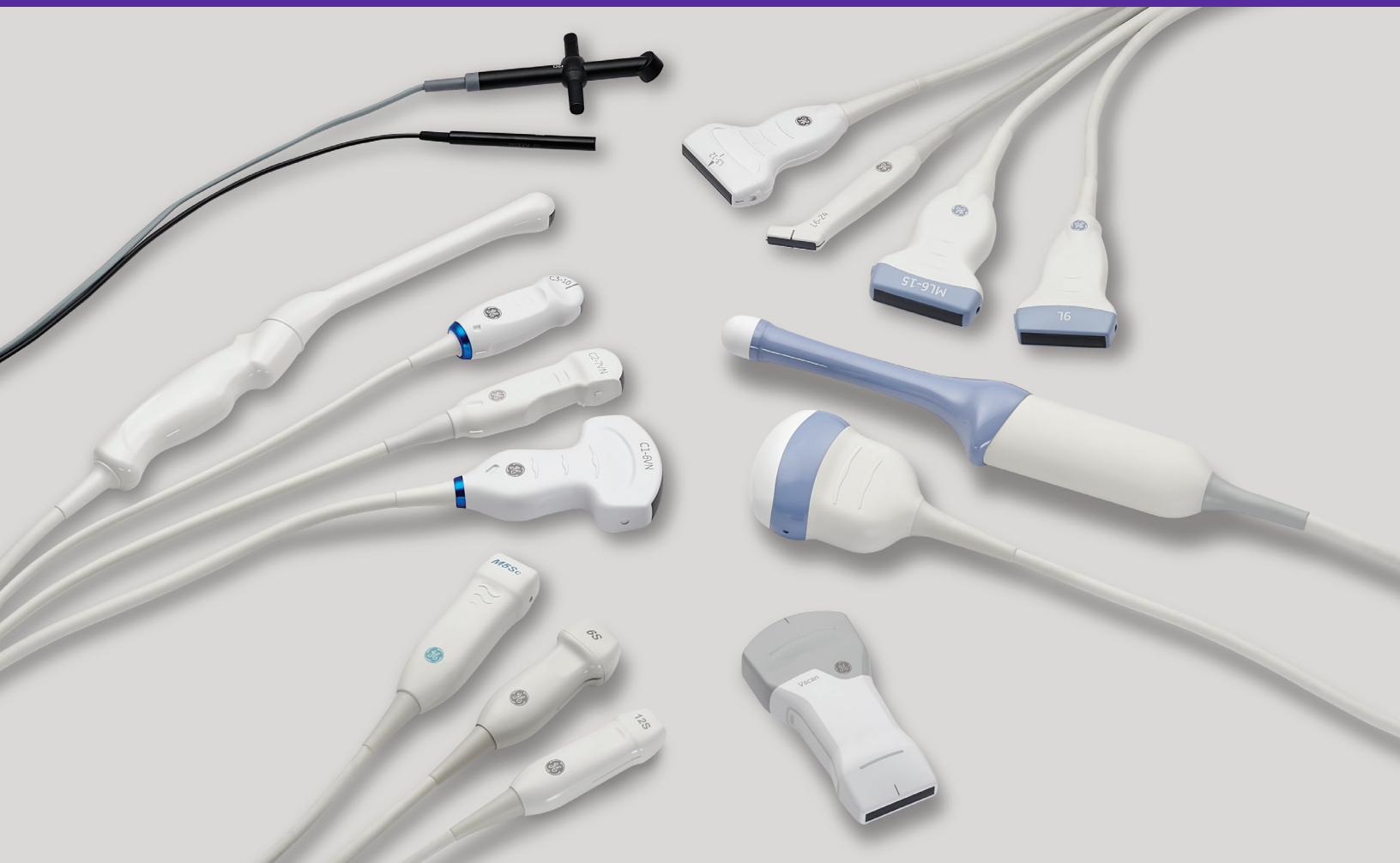


# LOGIQ Totus™










## Probe guide



Featuring XDclear™ Technology

The LOGIQ Totus is GE HealthCare's ultrasound imaging system designed for general imaging applications including abdominal, vascular, obstetric, gynecologic, neonatal, pediatric, urological, transcranial, cardiac, and small parts applications.

| Description   | Applications   | FOV   | Bandwidth  | Biopsy Guide   | Volume Navigation   |
|---|--|-------|------------|--|---|
| <b>Convex</b>   |  |       |            |  |   |
|  <p>C1-6-D<br/>C1-6VN-D*</p> | Abdominal, Obstetrics, Gynecology, Vascular, Musculoskeletal, Pediatric  | 80°   | 1 – 6 MHz  | Multi-angle disposable with a reusable bracket       | Yes<br>* Internal VNav sensor, does not require an external bracket |
|  <p>C2-7-D<br/>C2-7VN-D*</p> | Abdominal, Pediatric   | 110°  | 1 – 6 MHz  | Multi-angle disposable with reusable bracket options | Yes<br>* Internal VNav sensor, does not require an external bracket |
|  <p>C3-10-D</p>              | Neonatal, Pediatrics, Vascular, Small Parts, Neonatal Transcranial, Abdominal                                    | 95°   | 2 – 11 MHz | No   | Yes   |
|  <p>IC5-9-D</p>               | Obstetrics, Gynecology, Urology  | 179°  | 3 – 10 MHz | Single-angle disposable or single-angle reusable     | Yes   |
| <b>Linear</b>   |  |       |            |  |   |
|  <p>ML6-15-D</p>           | Vascular, Small Parts, Neonatal, Pediatrics, Neonatal Transcranial, Musculoskeletal, Breast, Abdominal           | 50 mm | 4 – 16 MHz | Multi-angle disposable with a reusable bracket       | Yes   |
|  <p>L3-12-D</p>            | Neonatal, Obstetric, Vascular, Musculoskeletal, Small Parts, Pediatric, Neonatal Transcranial, Abdominal, Breast | 51 mm | 2 – 11 MHz | Multi-angle disposable with a disposable bracket     | Yes   |
|  <p>L6-24-D</p>            | Musculoskeletal, Breast, Small Parts, Abdominal, Neonatal Abdominal, Neonatal Transcranial, Peripheral Vascular  | 26 mm | 6 – 20 MHz | No   | No  |
|  <p>9L-D</p>               | Vascular, Small Parts, Pediatric, Abdominal, OB/GYN, Neonatal, Neonatal Transcranial, Musculoskeletal, Breast    | 44 mm | 2 – 8 MHz  | Multi-angle, disposable with a reusable bracket      | Yes   |

| Description   | Applications   | FOV   | Bandwidth  | Biopsy Guide                                    | Volume Navigation |
|---|--|-------|------------|---|-------------------|
| <b>Sector</b>   |  |       |            |   |                   |
|  M5Sc-D<br>XDclear broad-spectrum sector probe               | Cardiac, Transcranial, Abdominal, Adult Cephalic               | 120°  | 1 – 5 MHz  | Multi-angle disposable with a reusable bracket  | Yes               |
|  6S-D<br>Broad-spectrum sector probe                         | Pediatric Cardiac, Pediatric Abdominal                         | 115°  | 2 – 8 MHz  | No  | No                |
|  12S-D<br>Broad-spectrum sector probe                        | Pediatric, Pediatric Cardiac, Neonatal, Neonatal Cardiac       | 90°   | 4 – 12 MHz | No  | No                |
| <b>Real-time 4D</b>   |  |       |            |   |                   |
|  RAB6-D<br>Broad-spectrum real-time 4D probe                 | Abdominal, Obstetrics, Gynecology, Pediatrics, Neonatal        | 80°   | 2 – 8 MHz  | Single-angle disposable with a reusable bracket | No                |
|  RIC5-9-D<br>Broad-spectrum real-time 4D micro-convex probe | Obstetrics, Gynecology, Urology                                | 179°  | 3 – 10 MHz | Single-angle reusable                           | No                |
| <b>Specialty</b>  |  |       |            |   |                   |
|  P2D<br>CW split crystal pencil probe                       | Cardiac, Vascular, Adult Cephalic                              | N/A   | 1 – 3 MHz  | No  | No                |
|  P6D<br>CW split crystal pencil probe                       | Cardiac, Vascular, Adult Cephalic                              | N/A   | 5 – 7 MHz  | No  | No                |
| <b>Wireless</b>   |  |       |            |   |                   |
|  Vscan Air™ CL convex probe<br>Broad-spectrum convex probe  | Abdominal, Obstetrics, Vascular, Musculoskeletal, Cardiac      | 60°   | 2 – 5 MHz  | No  | No                |
|  Vscan Air CL linear probe<br>Broad-spectrum linear probe   | Vascular, Thyroid, Scrotal, Breast, Musculoskeletal, Pediatric | 38 mm | 3– 12 MHz  | No  | No                |

For probe care and cleaning information, visit [www.gehealthcare.com/transducers](http://www.gehealthcare.com/transducers).



GE HealthCare

Products mentioned in the material may be subject to government regulations and may not be available in all countries. Shipment and effective sale can only occur after approval from the regulator. Please check with local GE HealthCare representative for details.

© 2024 GE HealthCare. LOGIQ Totus, XDclear, and Vscan Air are trademarks of GE HealthCare. GE is a trademark of General Electric Company used under trademark license.

March 2024  
DOC2976282