

MVM PLUS C



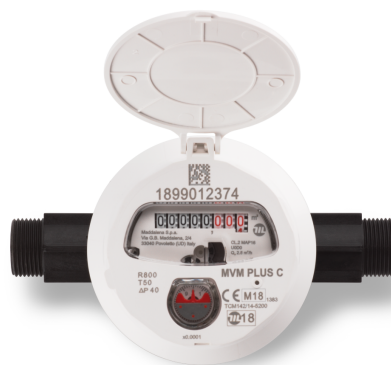
VOLUMETRIC ROTARY PISTON METER

MVM PLUS C is the water meter in composite material for applications in the Utilities sector that guarantees maximum accuracy and reliability in all conditions of installation. Its extremely low starting flow rate and the wide measuring range allow the accounting of the entire consumption, making it easier to identify leaks. All thanks to the combination of rotary piston technology and the innovative IP68 copper/glass register. Robust, durable, suitable for the most challenging environments and types of installation. It can be equipped with the latest remote data transmission technologies.

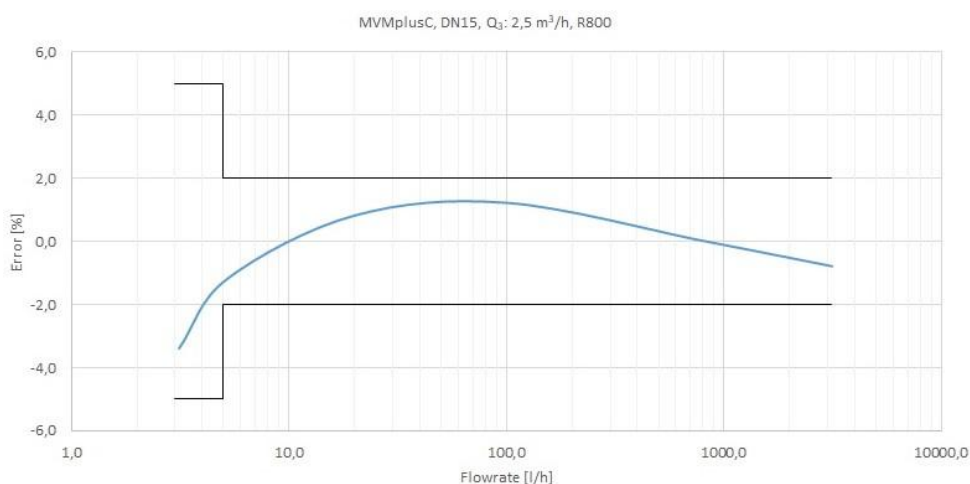
MVM PLUS C

FEATURES

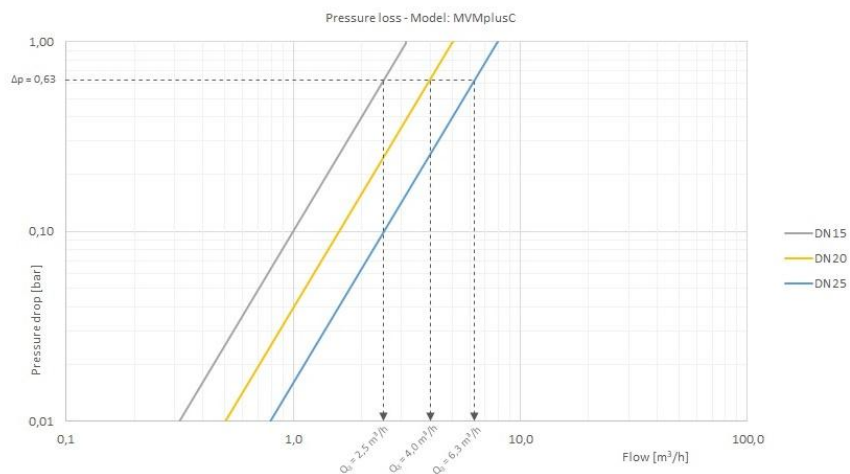
- Volumetric rotary piston meter for cold water
- Ideal for utilities and outdoor installations
- MID-certified: R max 800
- DN: 15÷25
- Health certifications available for a number of countries
- Can be installed in all positions while maintaining its metrological characteristics
- High protection against external magnetic fields
- Sealed register (IP68 copper/glass) to prevent condensation and provide excellent legibility
- The register can be rotated 360°
- Highly reinforced composite body
- Can be provided fitted with wired or radio communication module
- Pre-equipped for static pulse emitter (1P=1L)



TYPICAL ERROR CURVE



HEAD LOSS DIAGRAM



METROLOGICAL PERFORMANCE

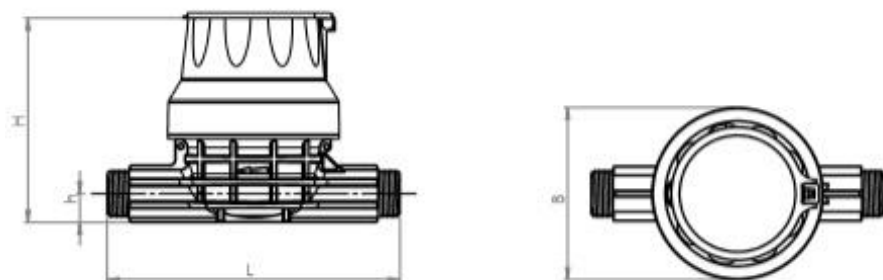
Size	mm	15	20	25
	in	½	¾	1
Module B no.	TCM 142/14 – 5200			
Module D no.	0119-SJ-A010-08			
Q ₃ /Q ₁ = R Referred to installation position	Any ≤ 800			
MID standard performance *				
Q ₃	m³/h	2,5	4	6,3
Q ₄	m³/h	3,13	5	7,88
R	400			
Q ₁	l/h	6,25	10	15,75
Q ₂	l/h	10	16	25,20

* Other values of R available upon request.

TECHNICAL DATA

Maximum permissible error between Q ₁ and Q ₂ (excluded)	+/- 5%			
Maximum permissible error between Q ₂ (included) and Q ₄	+/- 2% with water temperature ≤ 30°C +/- 3% with water temperature > 30°C			
Temperature class	T30,T50			
Flow profile sensitivity classes	U0 – D0			
Starting flow rate	l/h	0,5	1	2,5
Head loss	ΔP63			
Nominal pressure	bar	16		
Maximum reading	m³	99.999		
Minimum reading	l	0,02	0,002	0,02
Indicative weight	kg	0,450	0,9	1,3

DIMENSIONS



Size	mm	15	20	25
	in	½	¾	1
Thread	in	G ¾ B	G 1 B	G 1 ¼ B
L	mm	110/115/165/170/190	165/190	178/260
H	mm	115	127,5	148,5
h	mm	16	20	30
B	mm	94	108	135

COMMUNICATION MODULES



ARROW^{EVO} 868



ARROW^{WAN} 169



ARROW^{WAN2}



ARROW^{WAN} NB-IoT



FLOWPULSE

For more information on all the accessories available, consult the specific technical data sheets on the website www.maddalena.it