

Skin Grafting

TCM 3000 BL

Motor system for reconstructive surgery

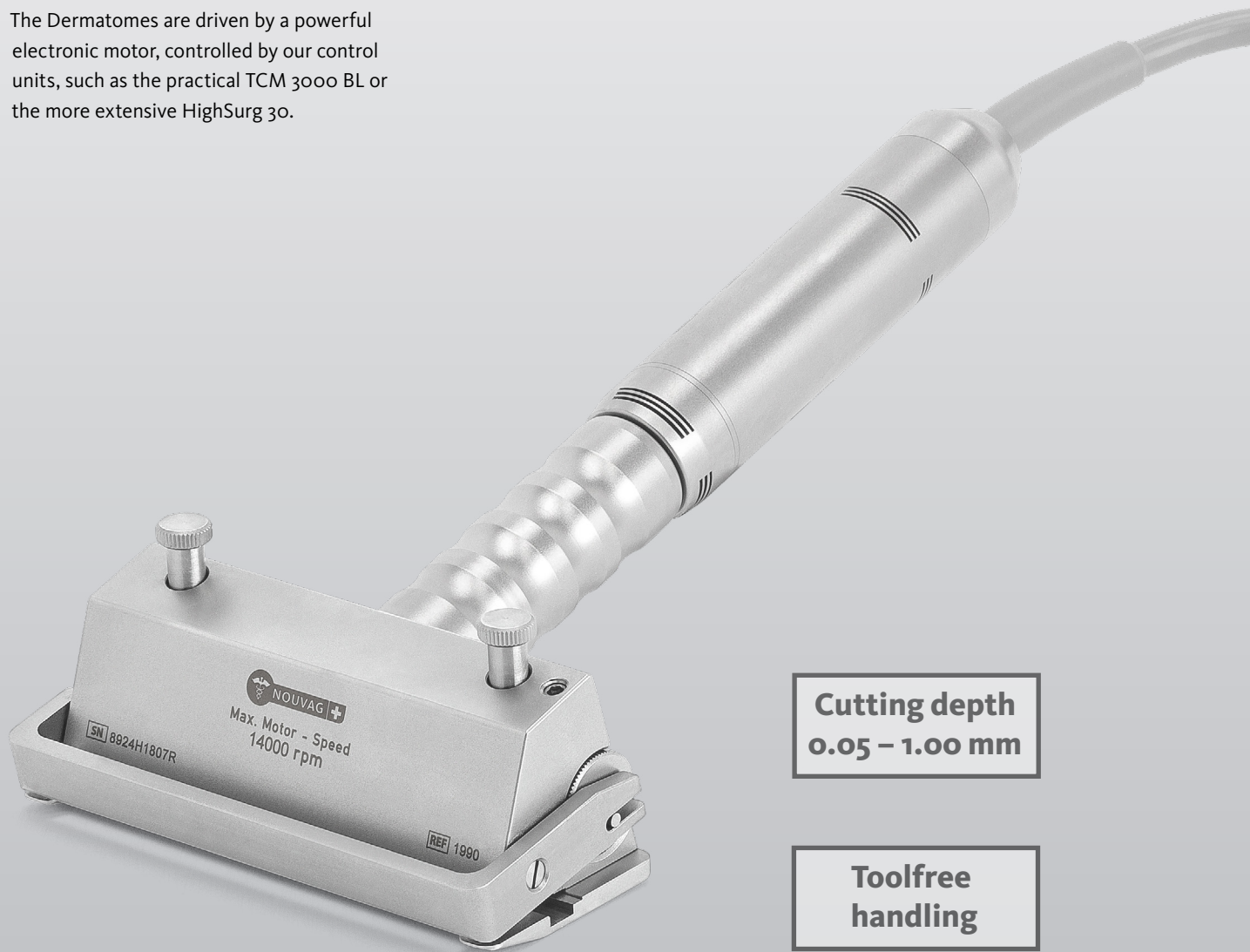


The TCM 3000 BL is a small, practical motor system for drilling, sawing and grinding as well as for skin grafting with the Dermatomes. Its simple, intuitive operation is the outstanding feature of this device.

**Torque controlled
electronic motor**

Dermatome for skin grafting and burns care

The Dermatomes are driven by a powerful electronic motor, controlled by our control units, such as the practical TCM 3000 BL or the more extensive HighSurg 30.



**Cutting depth
0.05 – 1.00 mm**

**Toolfree
handling**

**Weight
optimized**

Dermatomes

in 4 different widths

14 000 rpm

The specific dermatome with the corresponding width is chosen, depending on the body site, where the skin transplant must be taken from.

The blades can be uncovered and replaced without tools only by loosening the two screws attached above. The thickness of the skin sample, between 0.05 and 1.00 mm, is adjusted with the thumbwheel.

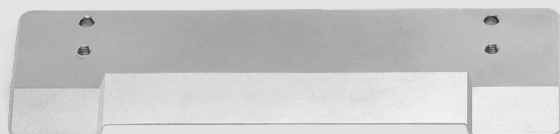
The variable base plates allow narrower skin sections to be gathered with a broad dermatome without the need for multiple Dermatomes.



Thumbwheel for the adjustment of the thickness of the skin from 0.05 – 1.00 mm



Accessories and spare parts



REF 19872
Reduction base plate for Dermatome 100
for the reduction of the cutting width to 75 mm.



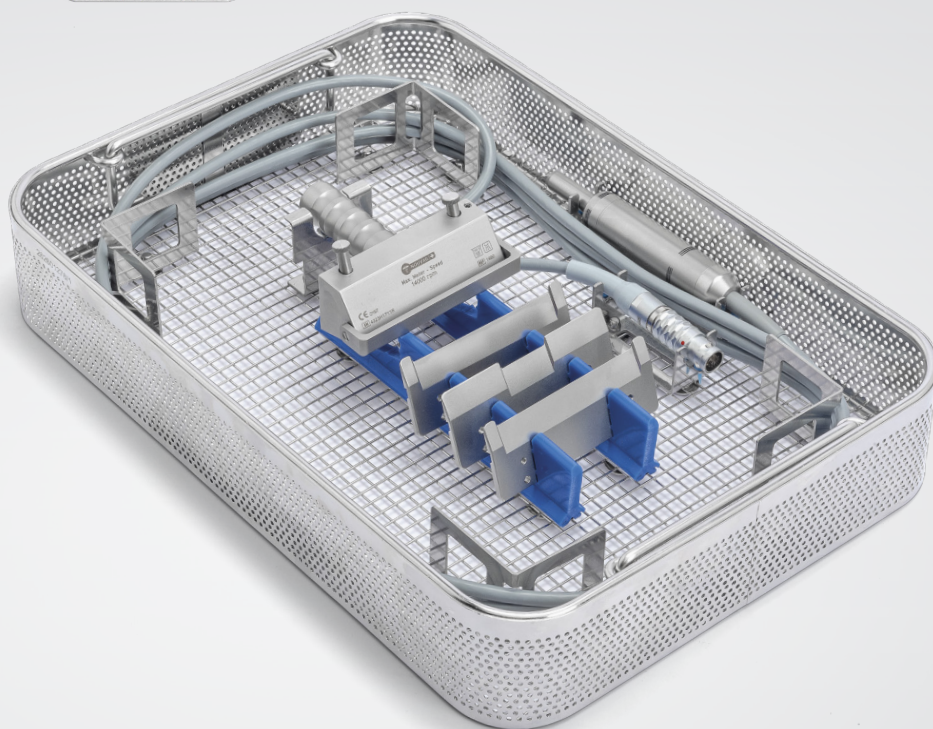
REF 19871
Reduction base plate for Dermatome 100
for the reduction of the cutting width to 50 mm.



REF 19887
Reduction base plate for Dermatome 75
for the reduction of the cutting width to 50 mm.



REF 19886
Reduction base plate for Dermatome 75
for the reduction of the cutting width to 25 mm.



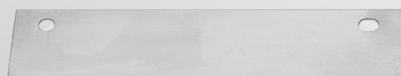
REF 4131
Sterilization and storage basket for your dermatome
system. Holder for dermatome handpiece, electronic
motor with cable and for reduction base plates.

REF 4133
Lid for Sterilization basket.

STERILE



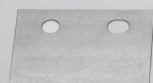
REF 1919
Spare blade for Dermatome 100
PU* 10 pieces.



REF 1995
Spare blade for Dermatome 75
PU* 10 pieces.



REF 1996
Spare blade for Dermatome 50
PU* 10 pieces.



REF 1997
Spare blade for Dermatome 25
PU* 10 pieces.

*PU: Packaging unit

Mesher

Skin expansion system

Skin sections taken with the dermatome are spread on a skin carrier plate that meets the requirements and forced through the Mesher by a pair of rollers with blades and the back pressure roller.

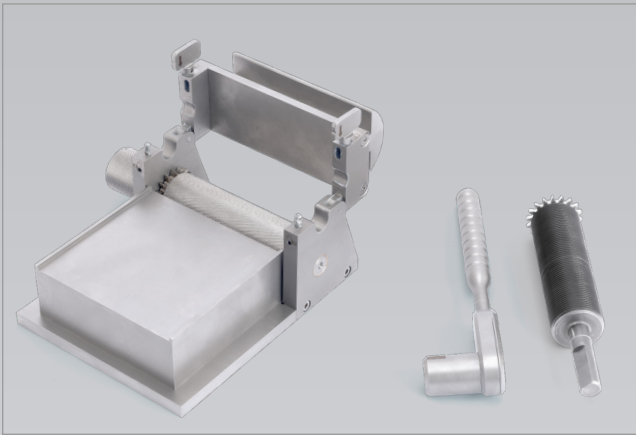
The resulting perforation in the skin section allows it to be stretched in width, according to the specification of the mesh board used.

The gained area enlargement of the skin section saves the patient further skin removal. The open interstices of the transplanted skin sections are built up in the process of growing together.

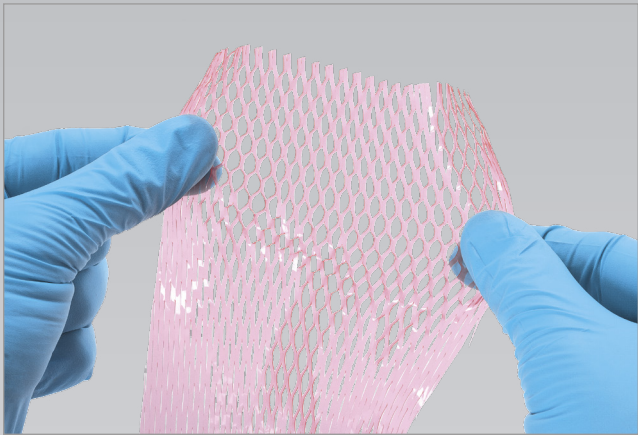


REF 1986nou
Mesher, skin expansion system

By unfolding the bridge, the blade roller can be removed for maintenance and cleaning.



When the pressure of the blade roller against the counter-pressure roller has been adjusted correctly, the graft can be stretched easily.



Derma carrier

Mesh Board



Mesher carrier plates	Expansion factor	PU*	REF
1.5 : 1 Carrier plates	1.5 : 1	20 pieces	1981
3.0 : 1 Carrier plates	3.0 : 1	20 pieces	1982
6.0 : 1 Carrier plates	6.0 : 1	20 pieces	2105

*PU: Packaging unit



Technical data

TCM 3000 BL: REF 3285

Voltage	switchable: 100 V~/ 115 V~/ 230 V~, 50 – 60 Hz
Speed range	500 – 40 000 rpm
Max. Torque	6 Ncm
Coupling motor side	ISO 3964
Dimensions (W x D x H)	120 x 180 x 115 mm

Electronic motor 21: REF 2112nou

Max. Speed	40 000 rpm
Max. Torque	6 Ncm
Coupling	ISO 3964
Weight	280 g, without cable
Cable length	3 m

Dermatome: REF 1992nou, 1991nou, 1990nou, 1983nou

Coupling	ISO 3964
Speed	14 000 rpm
Cutting width	25 mm, 50 mm, 75 mm, 100 mm
Cutting depth	0.05 – 1.00 mm
Torque max.	6 Ncm
Weight	330 g, 420 g, 560 g, 700 g

Mesher: REF 1986nou

Blade roller Ø	30 mm
Weight	4.9 kg
Dimensions (W x D x H)	210 x 195 x 110 mm

Derma carrier plates 1.5:1 / 3:1 / 6:1

Leaflet may represent products that are not available in all markets.



Nouvag AG
St.Gallerstr. 23–25
CH-9403 Goldach

Tel +41 (0)71 846 66 00

info@nouvag.com
www.nouvag.com



Nouvag GmbH
Schulthaißstr. 15
D-78462 Konstanz

Tel +49 (0)7531 1290-0
Fax +49 (0)7531 1290-12

info-de@nouvag.com
www.nouvag.com



Nouvag USA, LLC
6201 Airport Freeway, Suite 200
USA-76117 Haltom City, Texas

Tel +1 817 887-9814
Fax +1 817 887-9817

Toll free number (800) 673 7427
www.nouvagusa.com