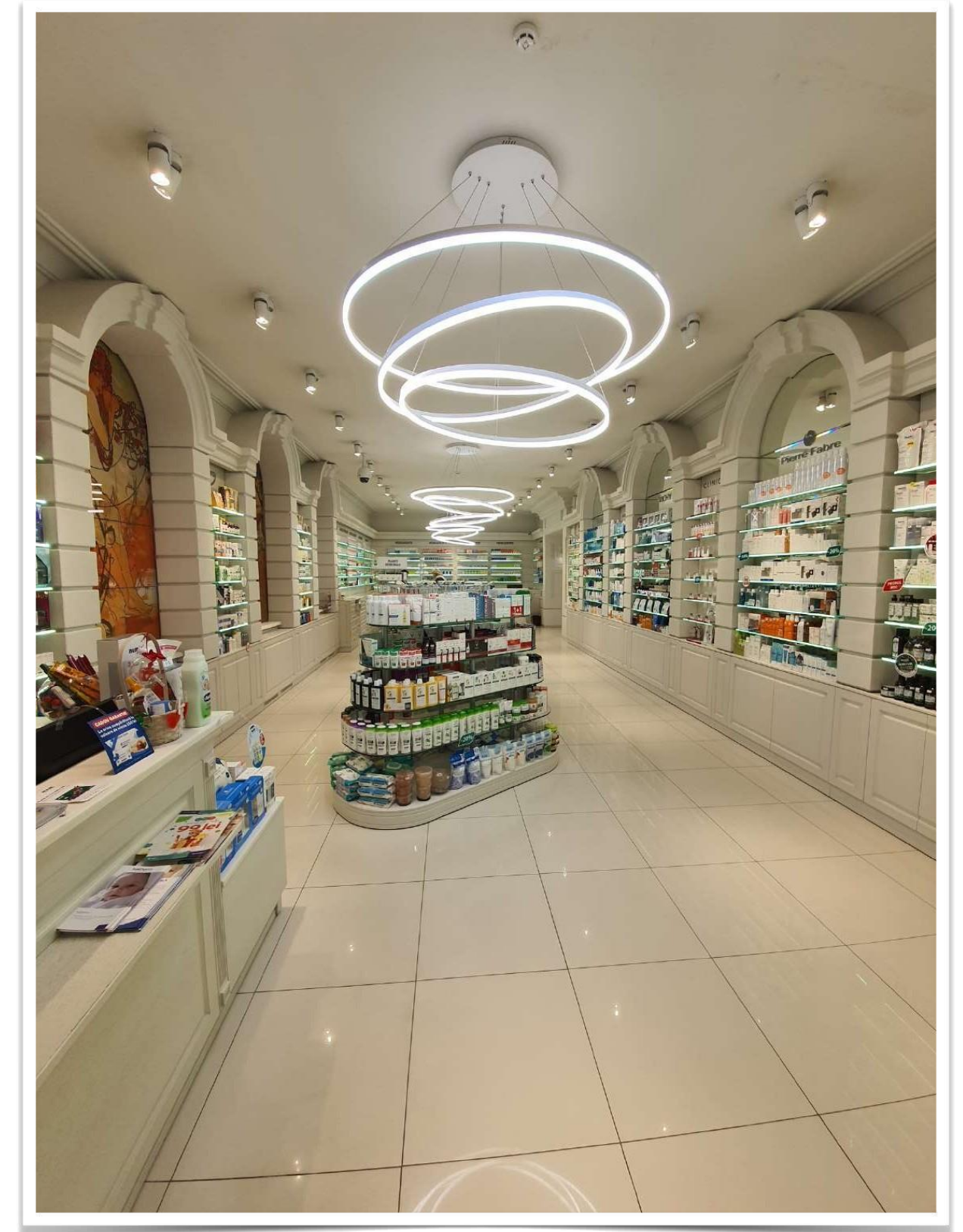
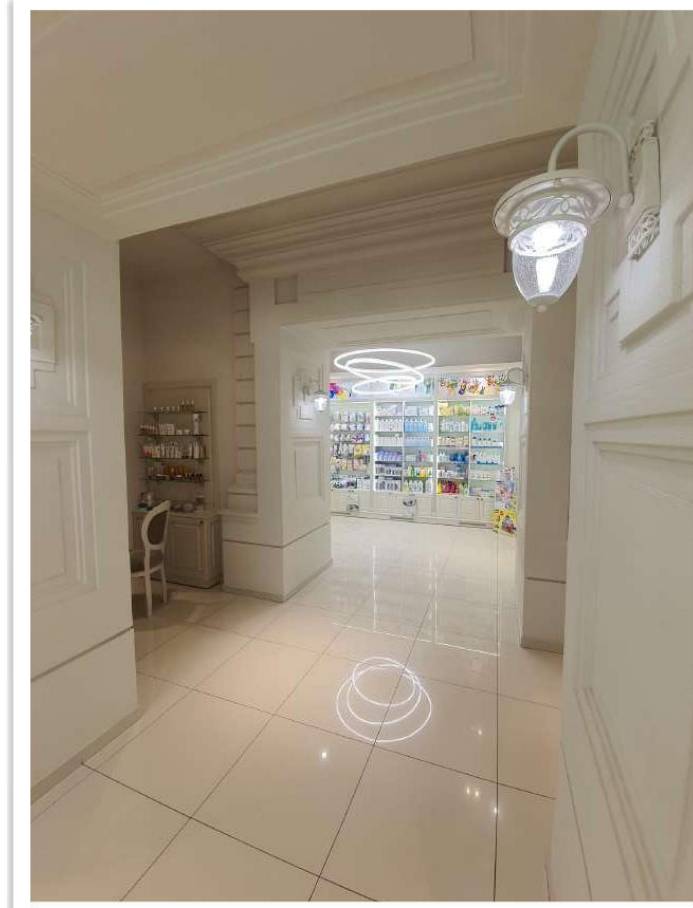


SIGMA VENMER

Prezentare a obiectivelor majore 2017-2022

2017 Cea mai mare Farmacie și Centru Optic. Farmacia Familiei / Medicor. Chișinău, bd. Ștefan cel Mare și Sfânt. Executare 5 luni.



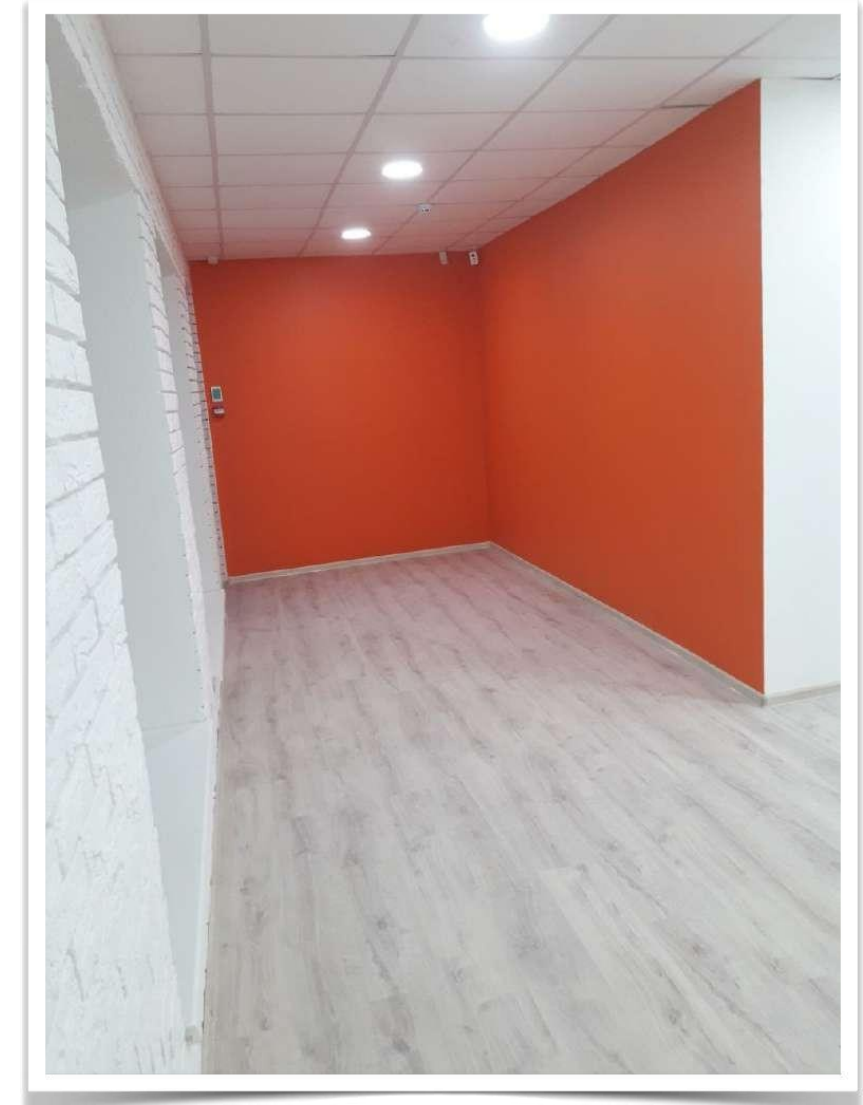
2018 Obiectiv comercial polivalent, inclusiv Linella

Briceni. Executarea 6 luni.



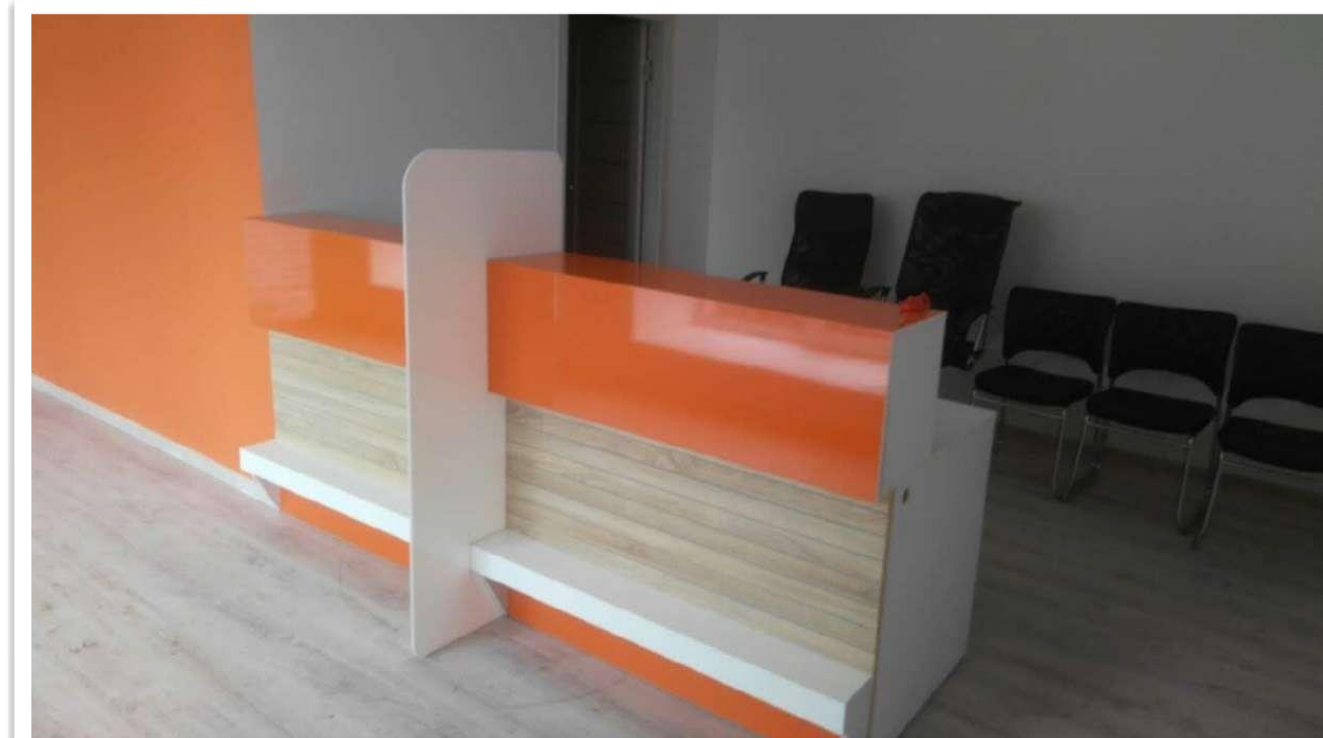
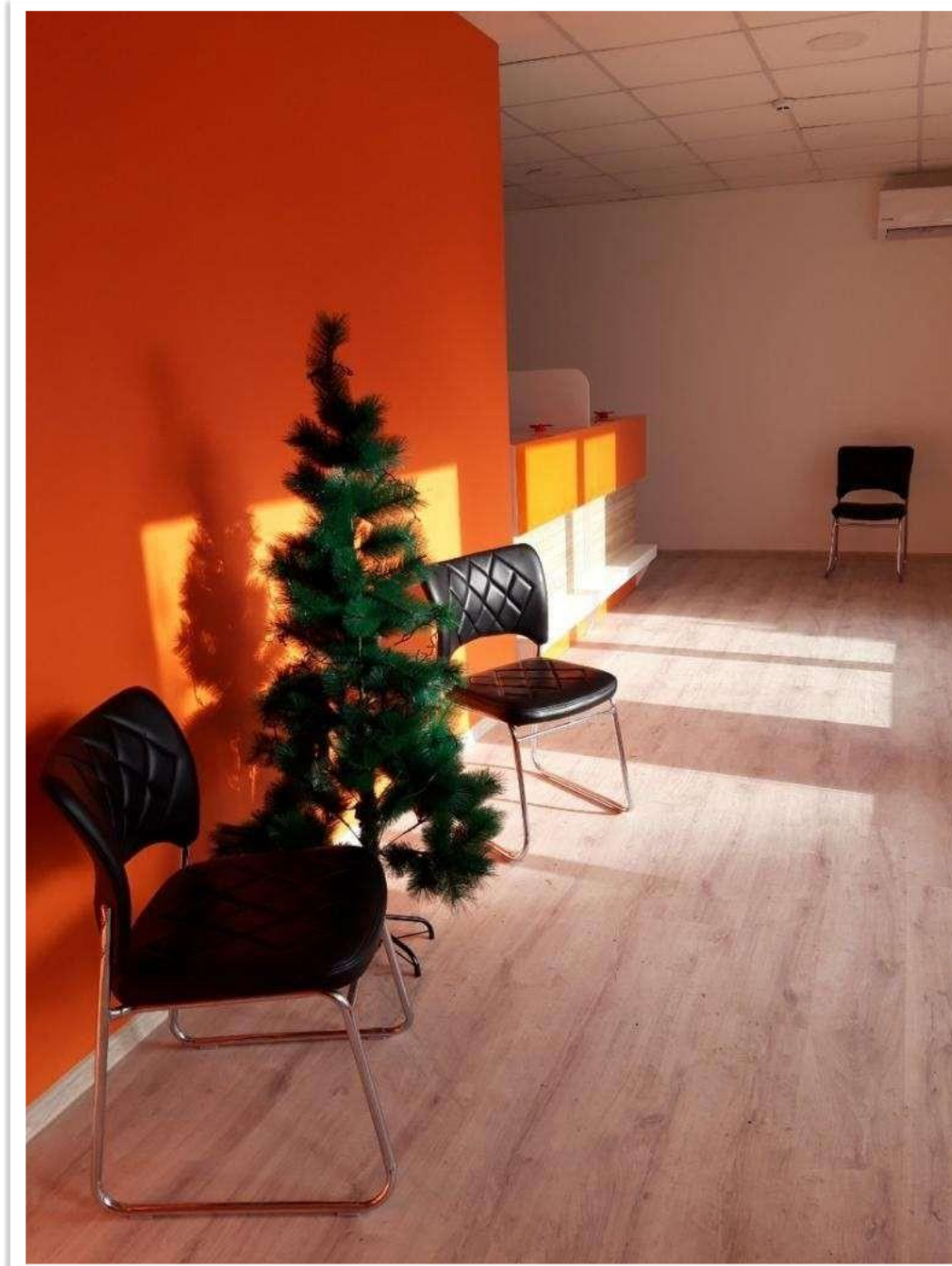
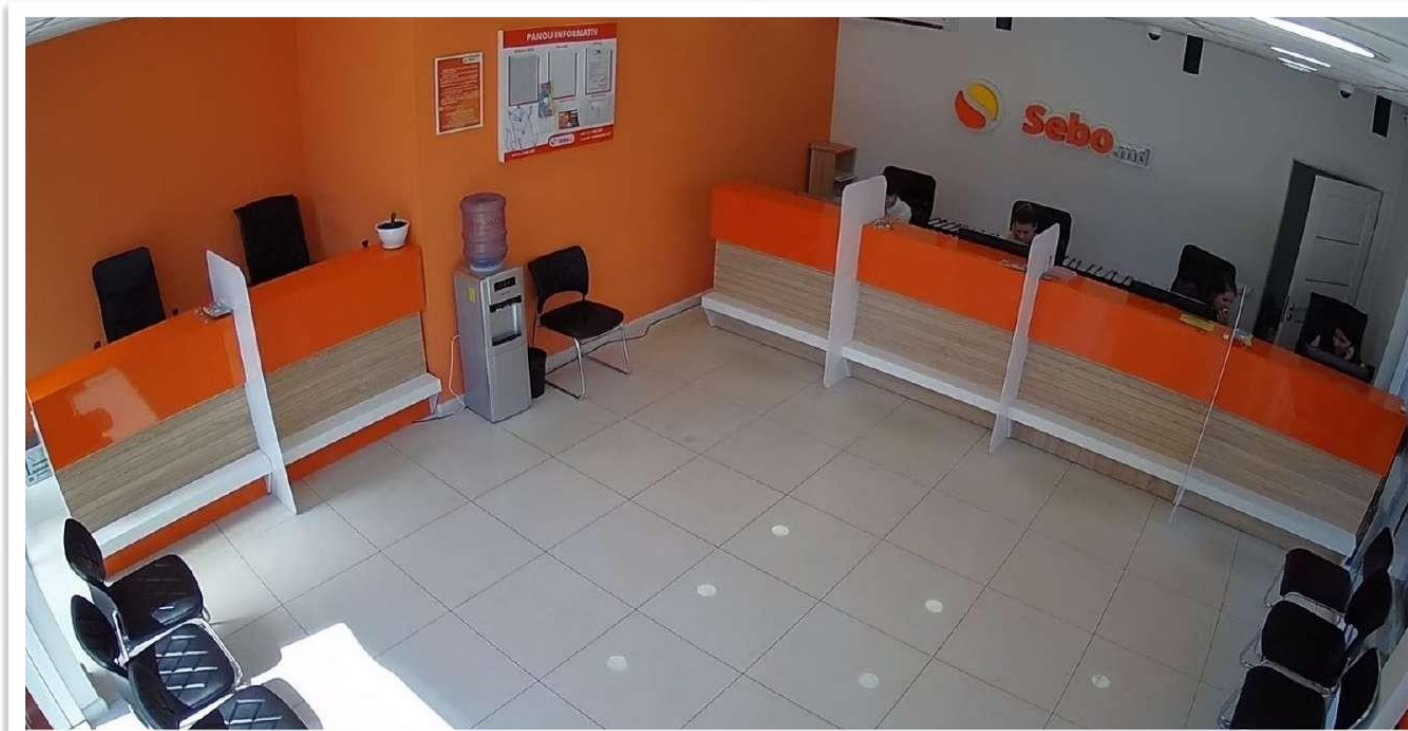
2018 Rețeau SEBO.

Floresti, Chișinău, Causeni, Călărași, Anenii Noi, Edinet. Executare 4 luni.



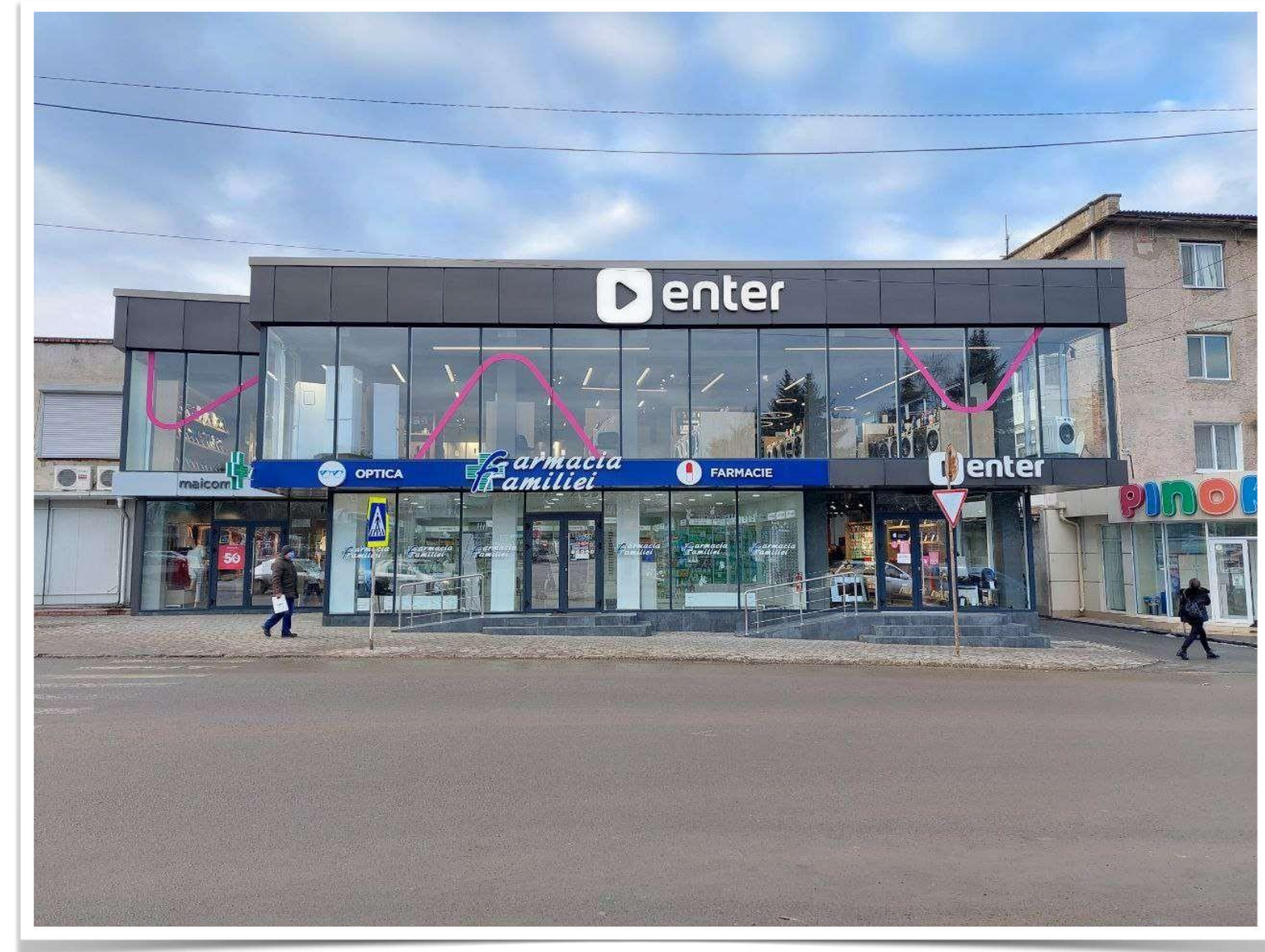
2019 Rețeau SEBO.

Criuleni, Cahul, Drochia. Executarea 3.5 luni.



2019 Centru Comercial.

Anenii Noi. Executarea 6 luni.



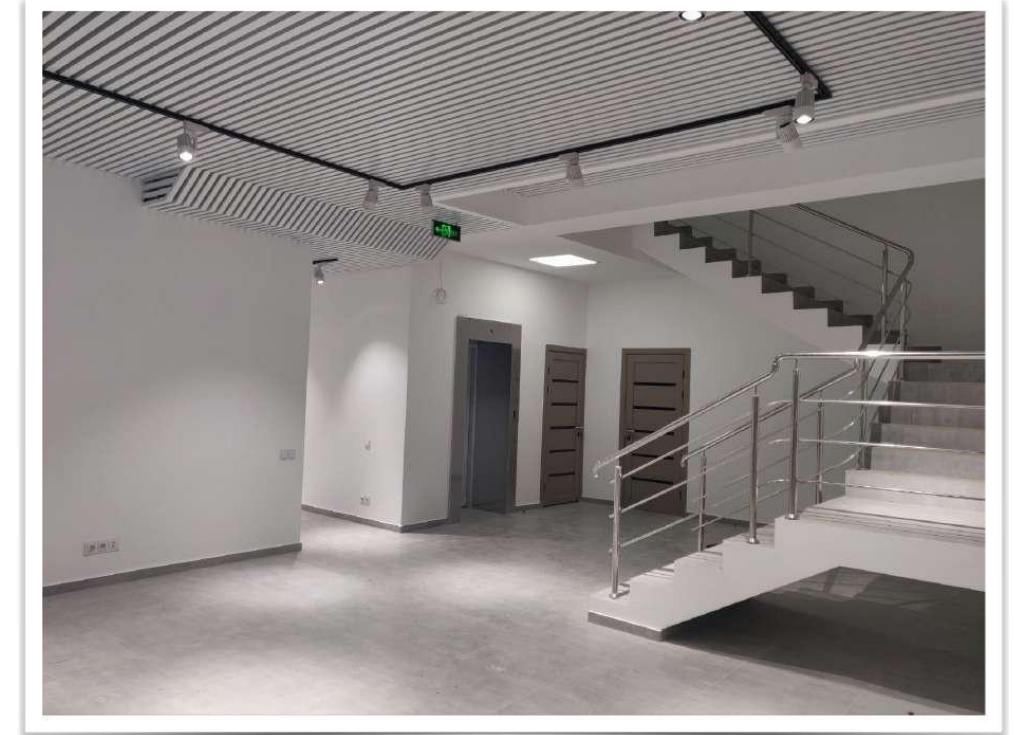
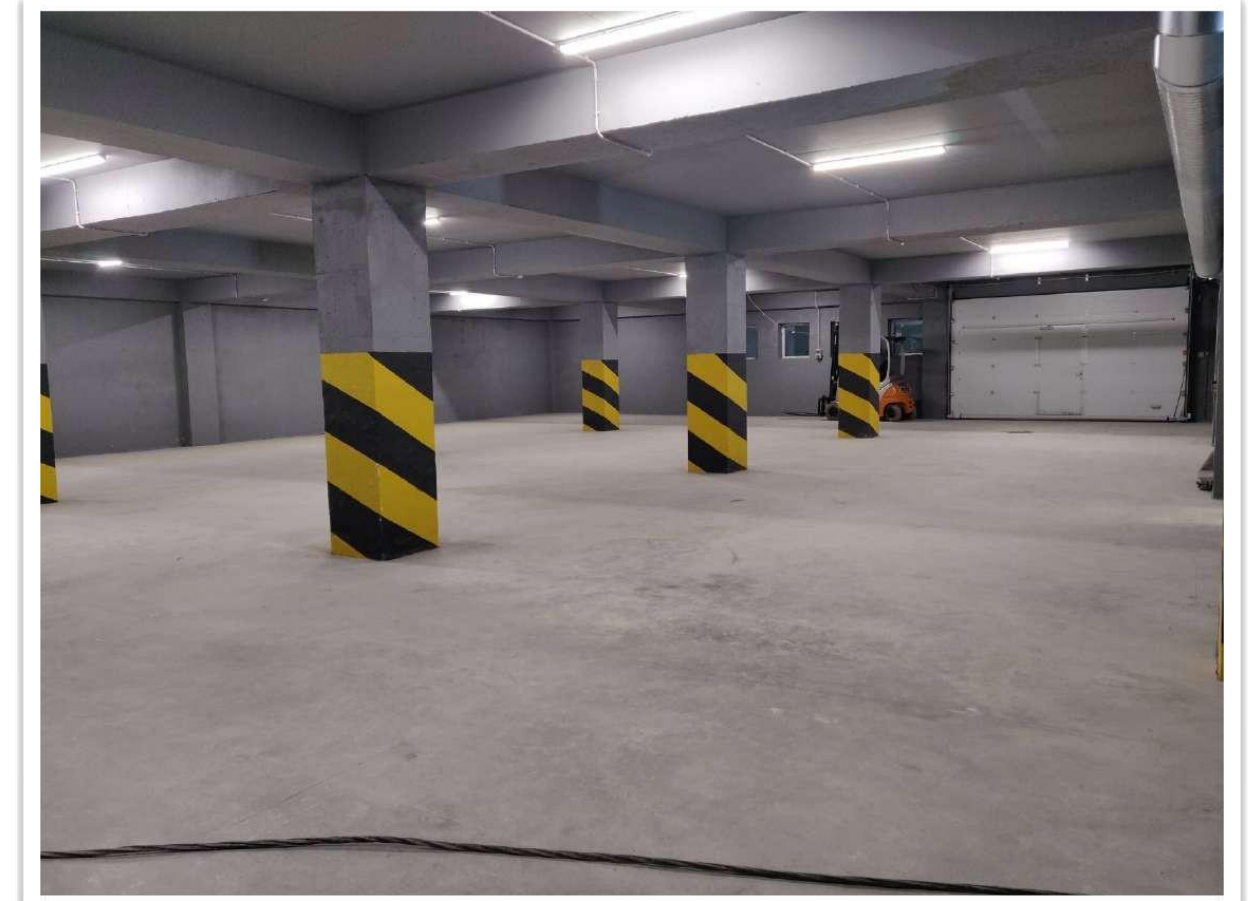
2019 Linella Hypermarket și Centru Comercial.

Anenii Noi. Executarea 6 luni.



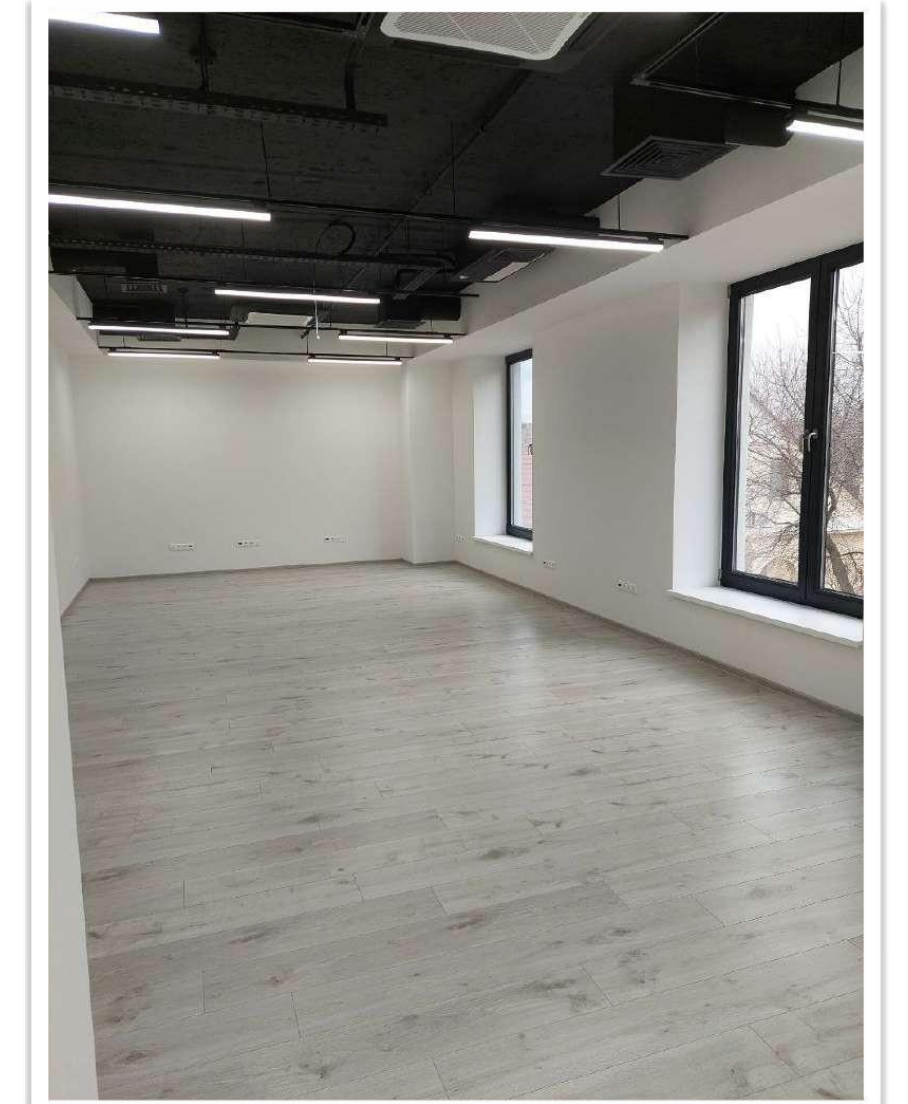
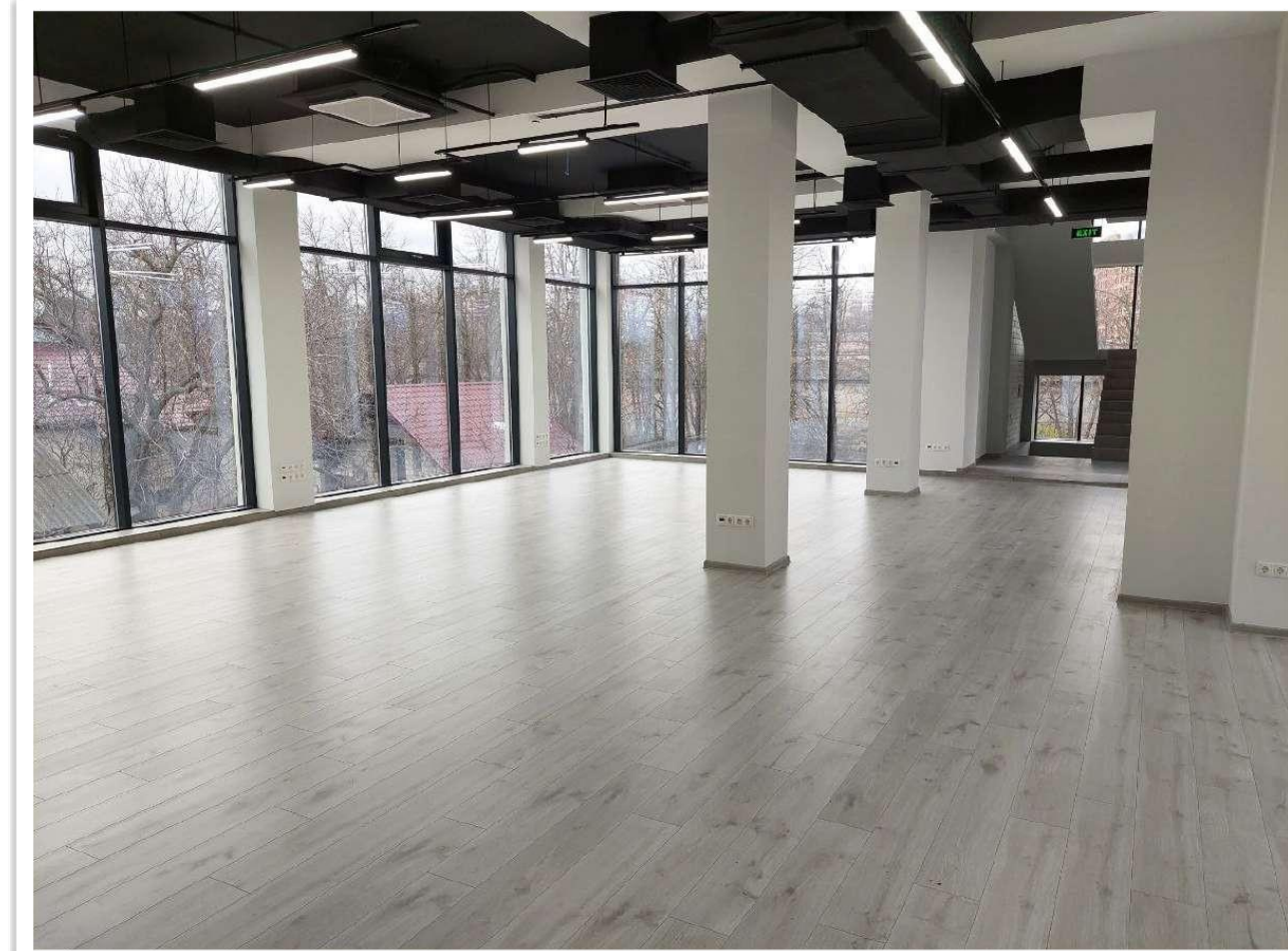
2020 Complex: Centru de oficii și depozit farmaceutic după criteriile GDP și standardele ISO.

Chișinău, Dumbrava. Executarea 12 luni.



2020 Europarc Head Office (Incasso).

Chişinău. Executarea 11 luni.



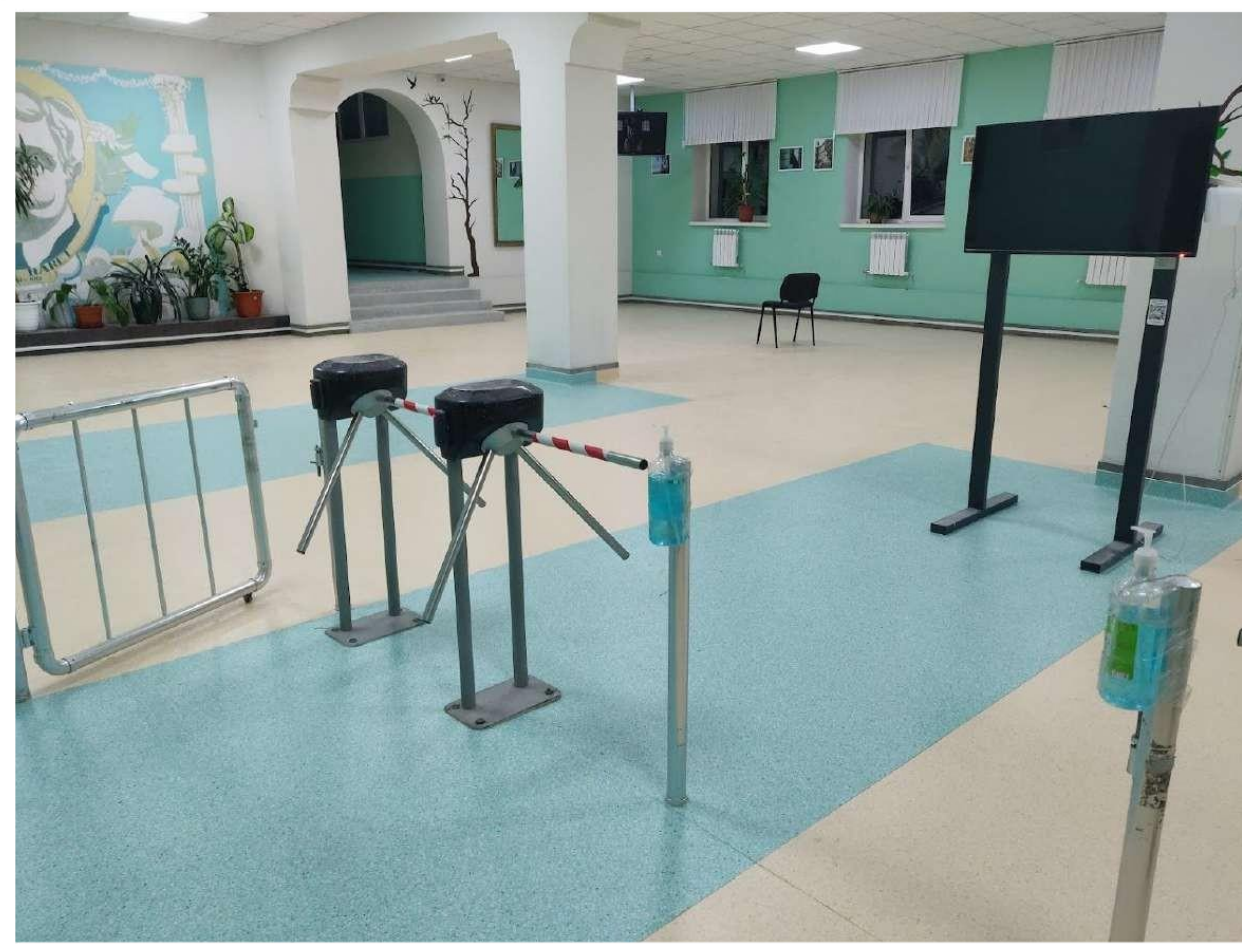
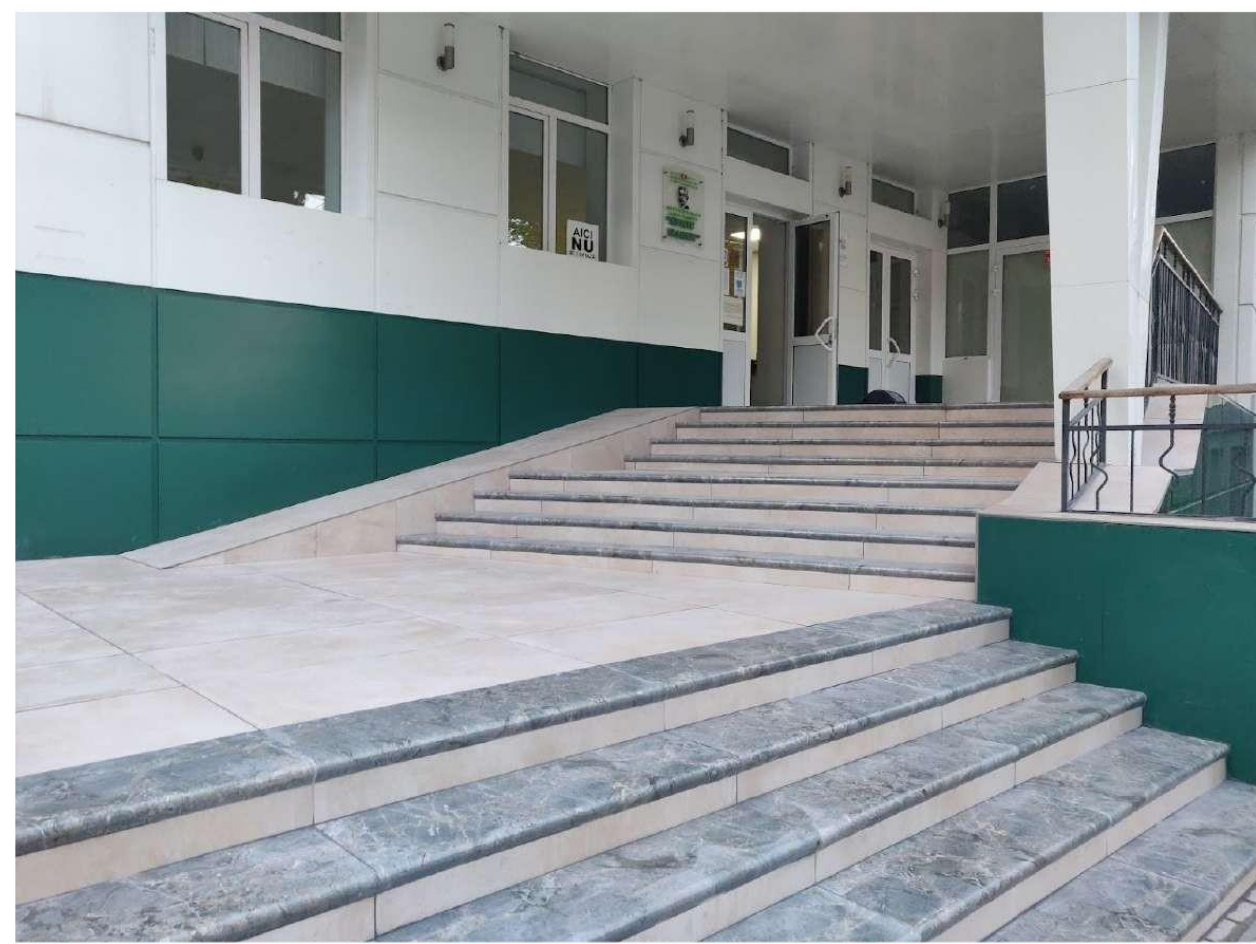
2021 Petricani Business Centre.

Chişinău. Executare 7 luni (lucrări interioare).



2021 Resistematizarea parțială Liceul “Spiru Haret”

Chișinău. Executarea 3 luni.



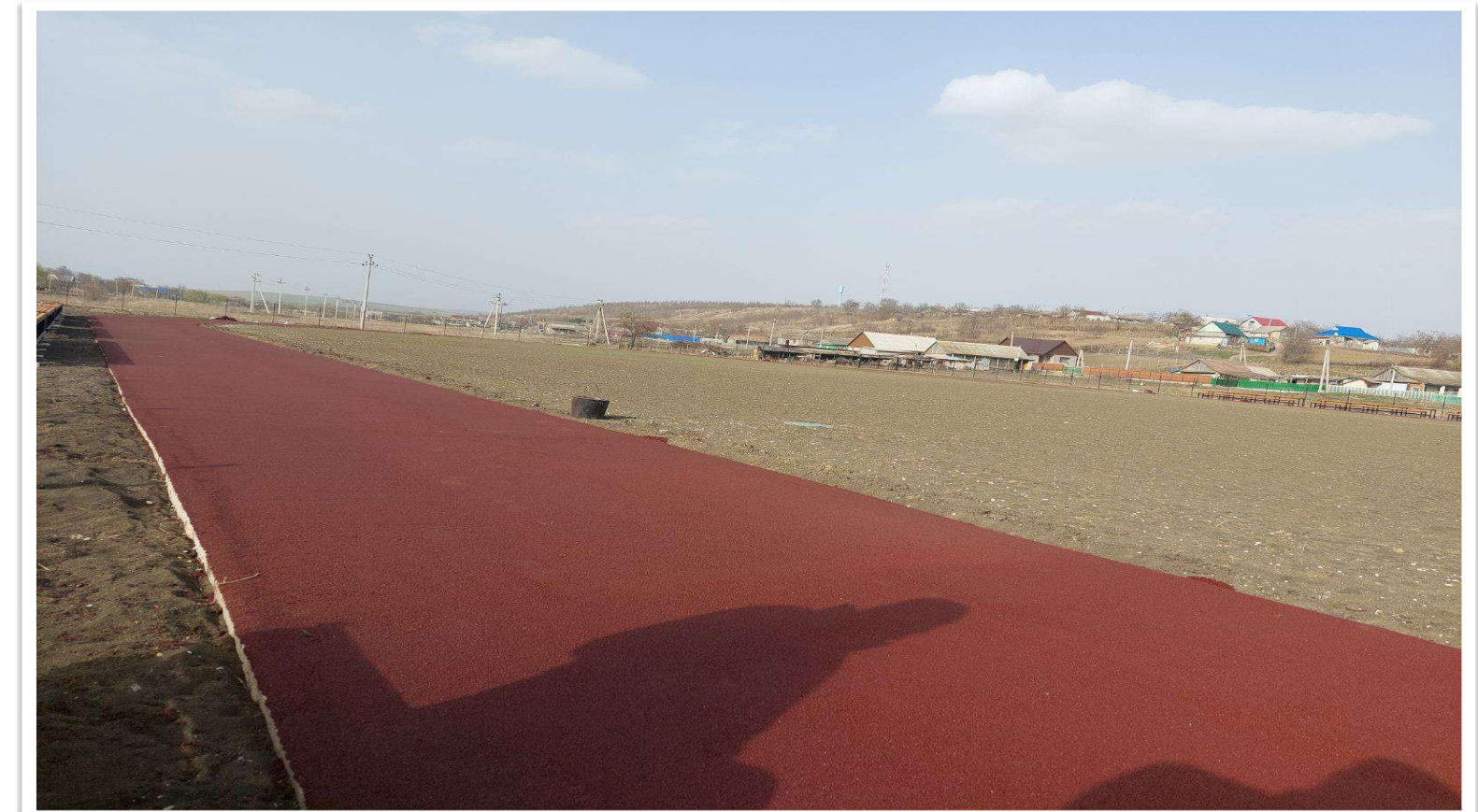
2021 CUPS (Banca Europeană / Guvernul RM).

Panasesti, Lozova, Taxobeni, Ungheni, Chiperceni, Holercani, Mereni, Peresecina, Pirjolteni. Executarea - 3 luni.



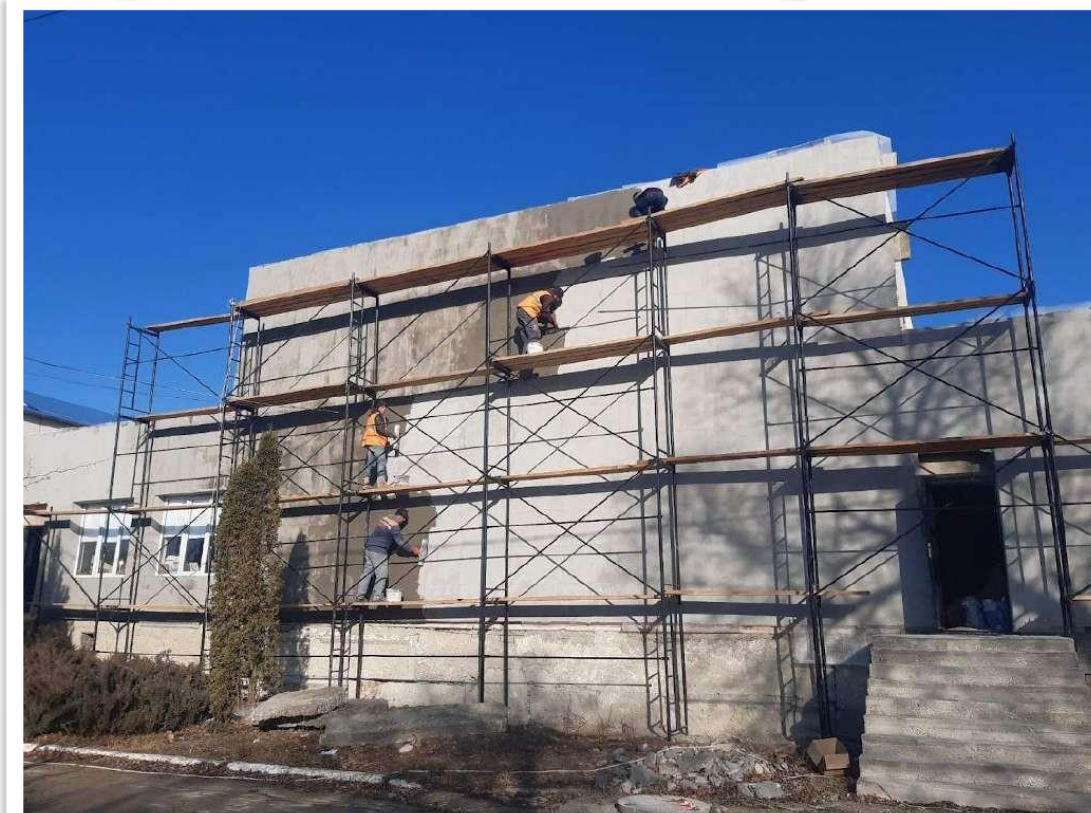
2021 Stadion comunal Borogani, Leova.

Borogani. Executare - 4 luni.



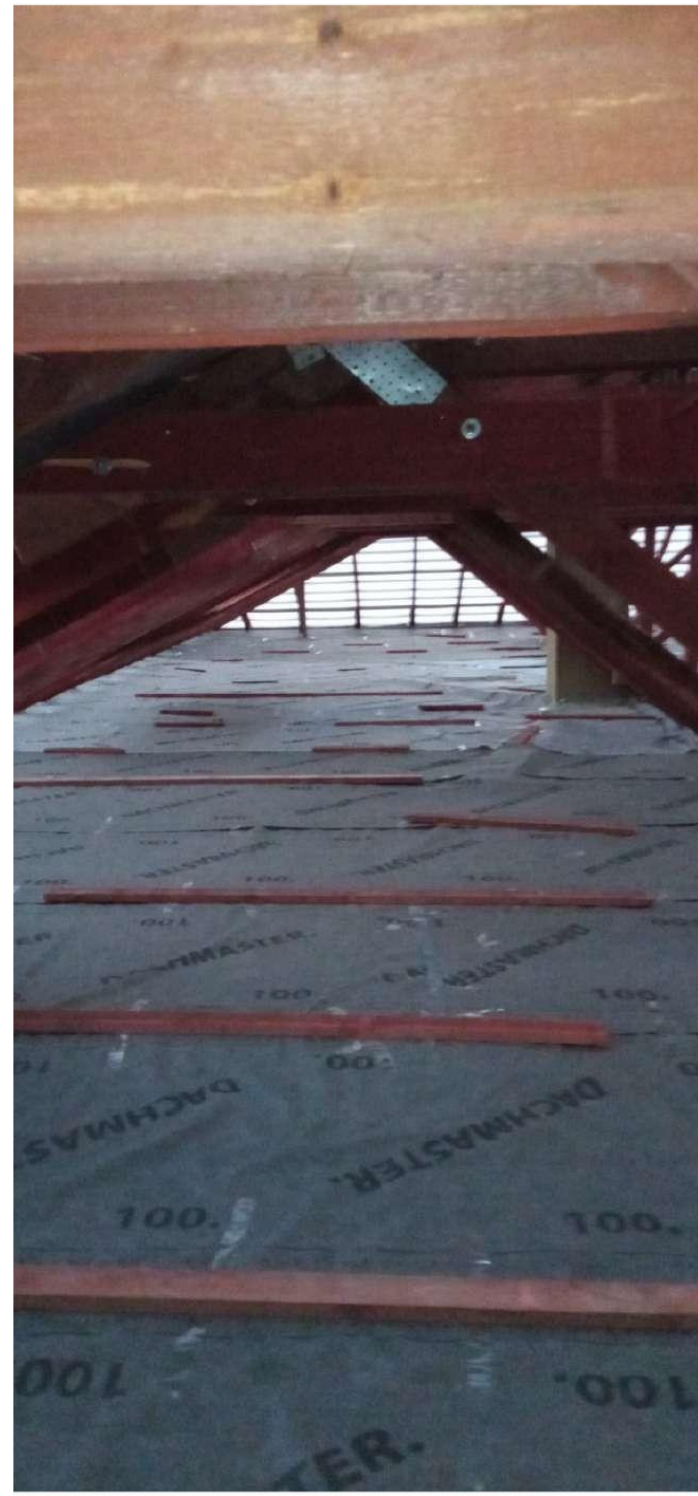
2021 Măsuri de eficiență energetică.

Băcioi. Liceul "Mihai Eminescu"



2021. Măsurile de eficiență energetică.

Grădinița Ciobanovca.



2022. Centru comercial polivalent, inclusiv Hypermarket Linella. Cantemir. Executarea - în derulare.

