

ELECTROSURGICAL ACCESSORIES

TECHNICAL INFORMATION

INDEX

Page 06: *Power Supply Cable*

Page 09: *Surgical pencil*

Page 12: *Foot Switch*

Page 16: *Neutral*

Page 23: *Connection*

Page 29: *Electrode*

Page 34: *Adapters*

Page 36: *Bipolar/Monopolar*

Page 44: *Evacuation Kit*

Page 47: *Units support*

CAPTIONS

Compatibility:

+ = optional

x = not compatible

+A= compatible only if you use adapter

N = Quantity Supplied



Packaging:
quantity of articles contained



Autoclavable at 134°



Not reusable



Sterilized with ethylene

IP67

The item is completely dust-proof and can with stand a 30-minute immersion in standing water



Anti explosion



100 Sterilization cycles



30 Sterilization cycles





ACCESORIES



POWER SUPPLY CABLE

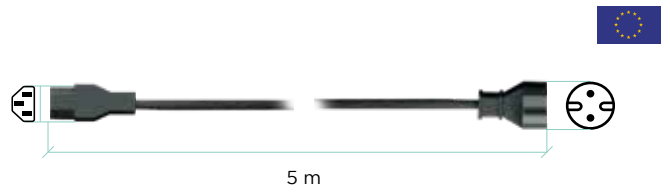
Description Power supply cable SIE-IEC
Cable Length 5 m (196,85 in)

- + 50 D
- + 80 D
- + 80
- + 120
- + 160
- + 200
- TOUCH 200
- FLASH 120
- FLASH 160 HF
- FLASH 200
- 300 HP
- 400 HP
- SURTRON EVAC
- SURTRON ABC
- + TOUCH HP 50D
- + TOUCH HP 80D
- + TOUCH HP 80
- + TOUCH HP 120
- + TOUCH HP 160
- + TOUCH HP 200
- + TOUCH HP 300
- + TOUCH HP 400
- TOUCH HP EVAC



pcs: 1

00100.01



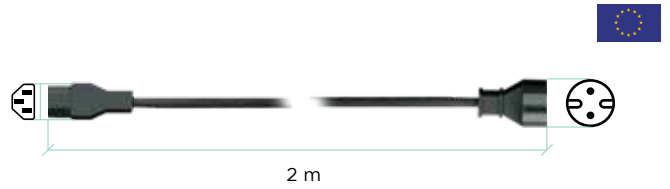
Description Power supply cable SIE-IEC
Cable Length 2 m (78,74 in)

- 50 D
- + 80 D
- + 80
- + 120
- + 160
- + 200
- + TOUCH 200
- + FLASH 120
- + FLASH 160 HF
- + FLASH 200
- + 300 HP
- + 400 HP
- + SURTRON EVAC
- + SURTRON ABC
- + TOUCH HP 50D
- + TOUCH HP 80D
- + TOUCH HP 80
- + TOUCH HP 120
- + TOUCH HP 160
- + TOUCH HP 200
- + TOUCH HP 300
- + TOUCH HP 400
- + TOUCH HP EVAC



pcs: 1

00100.03



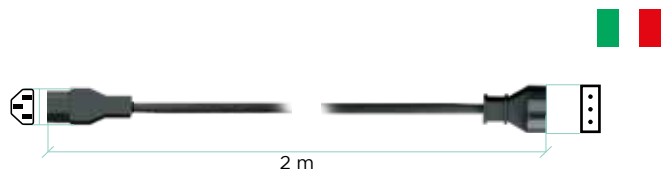
Description Power supply cable IT-IEC
Cable Length 2 m (78,74 in)

- + 50 D
- + 80 D
- + 80
- + 120
- + 160
- + 200
- + TOUCH 200
- + FLASH 120
- + FLASH 160 HF
- + FLASH 200
- + 300 HP
- + 400 HP
- + SURTRON EVAC
- + SURTRON ABC
- + TOUCH HP 50D
- + TOUCH HP 80D
- + TOUCH HP 80
- + TOUCH HP 120
- + TOUCH HP 160
- + TOUCH HP 200
- + TOUCH HP 300
- + TOUCH HP 400
- + TOUCH HP EVAC



pcs: 1

00100.00



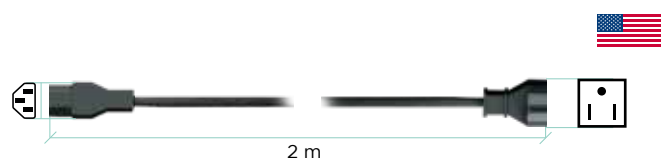
Description Power supply cable USA-IEC
Cable Length 2 m (78,74 in)

- + 50 D
- + 80 D
- + 80
- + 120
- + 160
- + 200
- + TOUCH 200
- + FLASH 120
- + FLASH 160 HF
- + FLASH 200
- + 300 HP
- + 400 HP
- + SURTRON EVAC
- + SURTRON ABC
- + TOUCH HP 50D
- + TOUCH HP 80D
- + TOUCH HP 80
- + TOUCH HP 120
- + TOUCH HP 160
- + TOUCH HP 200
- + TOUCH HP 300
- + TOUCH HP 400
- + TOUCH HP EVAC

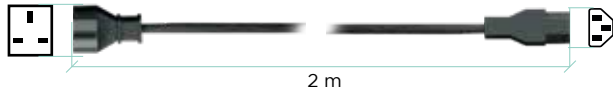


pcs: 1

00100.04



00100.05

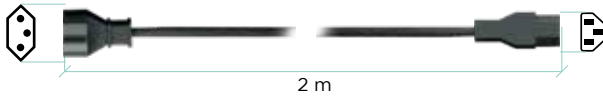


Description Power supply cable UK-IEC
Cable Length 2 m (78,74 in)

- + 50 D
- + 80 D
- + 80
- + 120
- + 160
- + 200
- + TOUCH 200
- + FLASH 120
- + FLASH 160 HF
- + FLASH 200
- + 300 HP
- + 400 HP
- + SURTRON EVAC
- + SURTRON ABC
- + TOUCH HP 50D
- + TOUCH HP 80D
- + TOUCH HP 80
- + TOUCH HP 120
- + TOUCH HP 160
- + TOUCH HP 200
- + TOUCH HP 300
- + TOUCH HP 400
- + TOUCH HP EVAC



00100.07

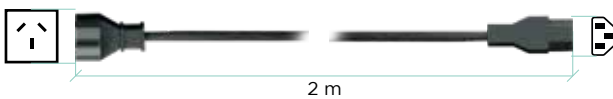


Description Power supply cable BR-IEC
Cable Length 2 m (78,74 in)

- + 50 D
- + 80 D
- + 80
- + 120
- + 160
- + 200
- + TOUCH 200
- + FLASH 120
- + FLASH 160 HF
- + FLASH 200
- + 300 HP
- + 400 HP
- + SURTRON EVAC
- + SURTRON ABC
- + TOUCH HP 50D
- + TOUCH HP 80D
- + TOUCH HP 80
- + TOUCH HP 120
- + TOUCH HP 160
- + TOUCH HP 200
- + TOUCH HP 300
- + TOUCH HP 400
- + TOUCH HP EVAC



00100.09

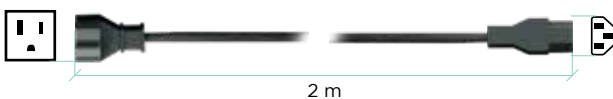


Description Power supply cable AU/CN-IEC
Cable Length 2 m (78,74 in)

- + 50 D
- + 80 D
- + 80
- + 120
- + 160
- + 200
- + TOUCH 200
- + FLASH 120
- + FLASH 160 HF
- + FLASH 200
- + 300 HP
- + 400 HP
- + SURTRON EVAC
- + SURTRON ABC
- + TOUCH HP 50D
- + TOUCH HP 80D
- + TOUCH HP 80
- + TOUCH HP 120
- + TOUCH HP 160
- + TOUCH HP 200
- + TOUCH HP 300
- + TOUCH HP 400
- + TOUCH HP EVAC



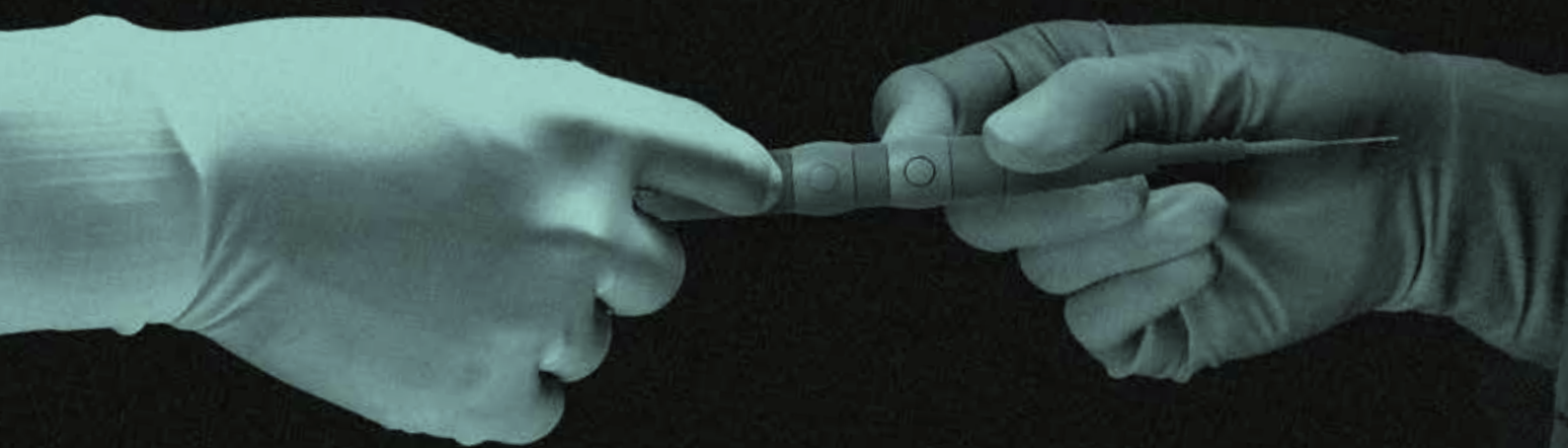
00100.10



Description Power supply cable JP-IEC
Cable Length 2 m (78,74 in)

- + 50 D
- + 80 D
- + 80
- + 120
- + 160
- + 200
- + TOUCH 200
- + FLASH 120
- + FLASH 160 HF
- + FLASH 200
- + 300 HP
- + 400 HP
- + SURTRON EVAC
- + SURTRON ABC
- + TOUCH HP 50D
- + TOUCH HP 80D
- + TOUCH HP 80
- + TOUCH HP 120
- + TOUCH HP 160
- + TOUCH HP 200
- + TOUCH HP 300
- + TOUCH HP 400
- + TOUCH HP EVAC





SURGICAL PENCIL

00201.02



Description	Handle for microsurgical needle autoclavable
Cable Length	2 m (78,74 in)
Size	10x1x1 cm (3,93x0,39x0,39 in)
Weight	0,05 kg (0,11lb)
Electrode Compatibility	ø0,8 mm (0,031 in)
Sterilization	Autoclavable
Sterilization cycles	100
Compatibility	500500.L

- + 50 D
- + 80 D
- + 80
- + 120
- + 160
- + 200
- + TOUCH 200
- 1 FLASH 120
- 1 FLASH 160 HF
- 1 FLASH 200
- x 300 HP
- x 400 HP
- x SURTRON EVAC
- x SURTRON ABC
- x TOUCH HP 50D
- x TOUCH HP 80D
- x TOUCH HP 80
- x TOUCH HP 120
- x TOUCH HP 160
- x TOUCH HP 200
- x TOUCH HP 300
- x TOUCH HP 400
- x TOUCH HP EVAC



00205.00



Description	Handle with switches
Cable Length	3 m (118,11 in)
Size	18,5x1,6x1,7 cm (7,2x0,62x0,66 in)
Weight	0,03kg (0,06 lb)
Electrode Compatibility	ø2,4 mm (0,94 in)
Sterilization	Autoclavable
Sterilization cycles	100

- x 50 D
- x 80 D
- x 1 80
- x 1 120
- x 1 160
- x 1 200
- x 1 TOUCH 200
- x 1 FLASH 120
- x 1 FLASH 160 HF
- x 1 FLASH 200
- x 1 300 HP
- x 1 400 HP
- x SURTRON EVAC
- x SURTRON ABC
- x TOUCH HP 50D
- x TOUCH HP 80D
- x TOUCH HP 80
- x TOUCH HP 120
- x TOUCH HP 160
- x TOUCH HP 200
- x TOUCH HP 300
- x TOUCH HP 400
- x TOUCH HP EVAC



00205.40



Description	Handle with switches
Cable Length	3 m (118,11 in)
Size	18,5x1,6x1,7 cm (7,2x0,62x0,66 in)
Weight	0,03kg (0,06 lb)
Electrode Compatibility	ø4 mm (1,15 in)
Sterilization	Autoclavable
Sterilization cycles	100

- x 50 D
- x 80 D
- + 80
- + 120
- + 160
- + 200
- + TOUCH 200
- + FLASH 120
- + FLASH 160 HF
- + FLASH 200
- + 300 HP
- + 400 HP
- x SURTRON EVAC
- x SURTRON ABC
- x TOUCH HP 50D
- x TOUCH HP 80D
- + TOUCH HP 80
- + TOUCH HP 120
- + TOUCH HP 160
- + TOUCH HP 200
- + TOUCH HP 300
- + TOUCH HP 400
- x TOUCH HP EVAC



Description Monopolar Handpiece
Cable Length 3 m (118,11 in)
Size 18,5x1,6x1,7 cm (7,2x0,62x0,66 in)
Weight 0,03kg (0,06 lb)
Electrode Compatibility ø2,4 mm (0,94 in)
Sterilization Autoclavable
Sterilization cycles 100

 pcs: 1

- 50 D
- 1 80 D
- + 80
- + 120
- + 160
- + 200
- + TOUCH 200
- + FLASH 120
- + FLASH 160 HF
- + FLASH 200
- + 300 HP
- + 400 HP
- x SURTRON EVAC
- x SURTRON ABC
- x TOUCH HP 50D
- 1 TOUCH HP 80D
- + TOUCH HP 80
- + TOUCH HP 120
- + TOUCH HP 160
- + TOUCH HP 200
- + TOUCH HP 300
- + TOUCH HP 400
- x TOUCH HP EVAC

00206.00



Description Monopolar Handpiece
Cable Length 3m (118,11 in)
Size 18,5x1,6x1,7 cm (7,2x0,62x0,66 in)
Weight 0,03 kg (0,06 lb)
Electrode Compatibility ø4 mm (1,15 in)
Sterilization Autoclavable
Sterilization cycles 100

 pcs: 1

- + 50 D
- + 80 D
- + 80
- + 120
- + 160
- + 200
- + TOUCH 200
- + FLASH 120
- + FLASH 160 HF
- + FLASH 200
- + 300 HP
- + 400 HP
- x SURTRON EVAC
- x SURTRON ABC
- x TOUCH HP 50D
- x TOUCH HP 80D
- x TOUCH HP 80
- x TOUCH HP 120
- x TOUCH HP 160
- x TOUCH HP 200
- x TOUCH HP 300
- x TOUCH HP 400
- x TOUCH HP EVAC

00206.40

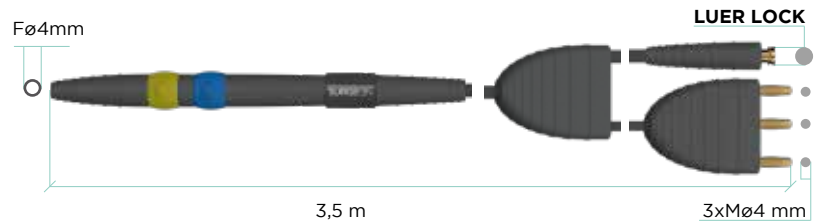


Description Handpiece for argon electrodes reusable
Cable Length 3,5 m (137,8 in)
Size 18,5x1,6x1,7 cm (7,2x0,62x0,66 in)
Weight 0,03kg (0,06lb)
Electrode Compatibility ø4 mm (1,15 in)
Sterilization Autoclavable
Sterilization cycles 100

 pcs: 1

- x 50 D
- x 80 D
- x 80
- x 120
- x 160
- x 200
- x TOUCH 200
- x FLASH 120
- x FLASH 160 HF
- x FLASH 200
- x 300 HP
- x 400 HP
- x SURTRON EVAC
- 1 SURTRON ABC
- x TOUCH HP 50D
- x TOUCH HP 80D
- x TOUCH HP 80
- x TOUCH HP 120
- x TOUCH HP 160
- x TOUCH HP 200
- + TOUCH HP 300
- + TOUCH HP 400
- x TOUCH HP EVAC

00420.00



Description Disposable handle with finger switches (F4797)
Size 14x2x1 cm (5,5x0,78x0,39 in)
Cable Length 3m (118,11in)
Weight 0,07 kg (0,15 lb)
Electrode Compatibility ø2,4 mm (0,094 in)
Sterilization Sterile EO
Sterilization cycles 0

 pcs: 1

- x 50 D
- x 80 D
- + 80
- + 120
- + 160
- + 200
- + TOUCH 200
- + FLASH 120
- + FLASH 160 HF
- + FLASH 200
- 5 300 HP
- 5 400 HP
- x SURTRON EVAC
- x SURTRON ABC
- x TOUCH HP 50D
- x TOUCH HP 80D
- + TOUCH HP 80
- + TOUCH HP 120
- + TOUCH HP 160
- + TOUCH HP 200
- 5 TOUCH HP 300
- 5 TOUCH HP 400
- x TOUCH HP EVAC

755VL





FOOT SWITCH

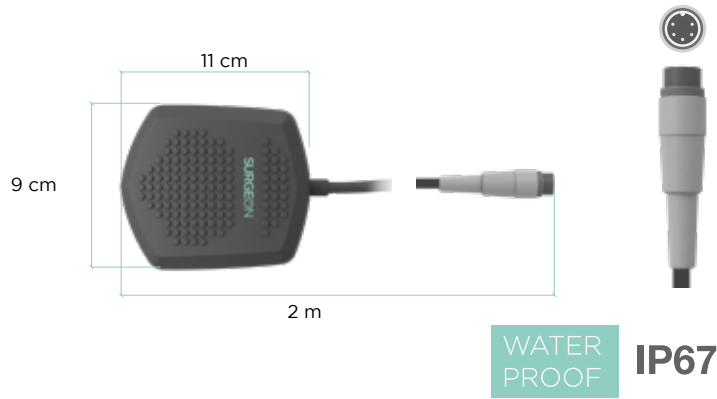
Description
Cable Length
Size
Weight

Water-proof foot switch
 2 m (78,75 in)
 11x3,5x9 cm (7,2x0,62x0,66 in)
 0,3 kg (0,66 lb)

 pcs: 1

- 1 50 D
- 1 80 D
- 1 80
- 1 120
- 1 160
- 1 200
- 1 TOUCH 200
- 1 FLASH 120
- 1 FLASH 160 HF
- 1 FLASH 200
- x 300 HP
- x 400 HP
- + SURTRON EVAC
- x SURTRON ABC
- 1 TOUCH HP 50D
- 1 TOUCH HP 80D
- 1 TOUCH HP 80
- 1 TOUCH HP 120
- 1 TOUCH HP 160
- 1 TOUCH HP 200
- x TOUCH HP 300
- x TOUCH HP 400
- + TOUCH HP EVAC

00304.00



Description
Cable Length
Size
Weight

Single water-proof foot switch (3 pins)
 5 m (196,85 in)
 11x3,5x9 cm (7,2x0,62x0,66 in)
 0,3 kg (0,66 lb)

 pcs: 1

- x 50 D
- x 80 D
- x 80
- x 120
- x 160
- x 200
- x TOUCH 200
- x FLASH 120
- x FLASH 160 HF
- x FLASH 200
- x 300 HP
- x 400 HP
- + SURTRON EVAC
- + SURTRON ABC
- x TOUCH HP 50D
- x TOUCH HP 80D
- x TOUCH HP 80
- x TOUCH HP 120
- x TOUCH HP 160
- x TOUCH HP 200
- x TOUCH HP 300
- x TOUCH HP 400
- x TOUCH HP EVAC

00304.01



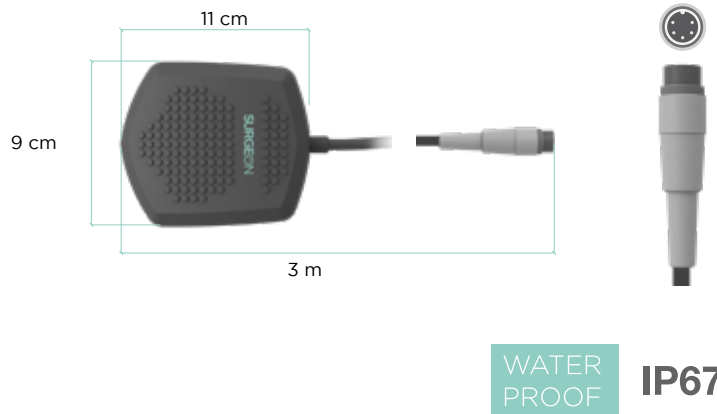
Description
Cable Length
Size
Weight

Water-proof foot switch
 3 m (118,11 in)
 11x3,5x9 cm (7,2x0,62x0,66 in)
 0,3 kg (0,66 lb)

 pcs: 1

- + 50 D
- + 80 D
- + 80
- + 120
- + 160
- + 200
- + TOUCH 200
- + FLASH 120
- + FLASH 160 HF
- + FLASH 200
- x 300 HP
- x 400 HP
- + SURTRON EVAC
- x SURTRON ABC
- x TOUCH HP 50D
- + TOUCH HP 80D
- + TOUCH HP 80
- + TOUCH HP 120
- + TOUCH HP 160
- + TOUCH HP 200
- x TOUCH HP 300
- x TOUCH HP 400
- + TOUCH HP EVAC

00304.04 S



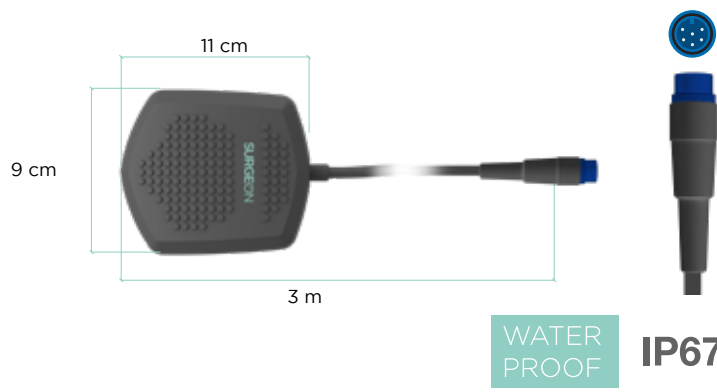
Description
Cable Length
Size
Weight

Water-proof foot switch (6 pins)
 5 m (196,85 in)
 11x3,5x9 cm (7,2x0,62x0,66 in)
 0,3 kg (0,66 lb)

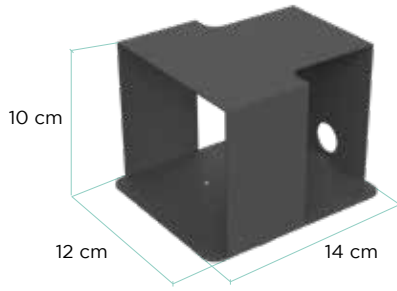
 pcs: 1

- x 50 D
- x 80 D
- x 80
- x 120
- x 160
- x 200
- x TOUCH 200
- x FLASH 120
- x FLASH 160 HF
- x FLASH 200
- x 300 HP
- x 400 HP
- + SURTRON EVAC
- x SURTRON ABC
- x TOUCH HP 50D
- x TOUCH HP 80D
- x TOUCH HP 80
- x TOUCH HP 120
- x TOUCH HP 160
- + TOUCH HP 200
- x TOUCH HP 300
- x TOUCH HP 400
- x TOUCH HP EVAC

00304.06 S



00304.PO



Description Protection for single foot switch
Cable Length NO
Size 12x10x14 cm (4,7x3,9x1,64 in)
Weight 0,65 kg (0,143 lb)

pcs: 1

- + 50 D
- + 80 D
- + 80
- + 120
- + 160
- + 200
- + TOUCH 200
- + FLASH 120
- + FLASH 160 HF
- + FLASH 200
- + 300 HP
- + 400 HP
- + SURTRON EVAC
- + SURTRON ABC
- + TOUCH HP 50D
- + TOUCH HP 80D
- + TOUCH HP 80
- + TOUCH HP 120
- + TOUCH HP 160
- + TOUCH HP 200
- + TOUCH HP 300
- + TOUCH HP 400
- + TOUCH HP EVAC

00305.03 S



Description Double water proof foot switch (5 pins)
Cable Length 5 m (196,85 in)
Size 35x6x18 cm (13,78x2,36x7 in)
Weight 1.3 kg (2,86lb)

pcs: 1

- x 50 D
- x 80 D
- x 80
- + 120
- + 160
- + 200
- + TOUCH 200
- + FLASH 120
- + FLASH 160 HF
- + FLASH 200
- + 300 HP
- + 400 HP
- + SURTRON EVAC
- + SURTRON ABC
- + TOUCH HP 50D
- + TOUCH HP 80D
- + TOUCH HP 80
- + TOUCH HP 120
- + TOUCH HP 160
- + TOUCH HP 200
- + TOUCH HP 300
- + TOUCH HP 400
- + TOUCH HP EVAC

WATER PROOF IP67

00305.04 S



Description Waterproof double foot switch (3 pins)
Cable Length 5 m (196,85 in)
Size 35x6x18 cm (13,78x2,36x7 in)
Weight 1.3 kg (2,86lb)

pcs: 1

- x 50 D
- x 80 D
- x 80
- x 120
- x 160
- x 200
- x TOUCH 200
- x FLASH 120
- x FLASH 160 HF
- x FLASH 200
- 2 300 HP
- 2 400 HP
- x SURTRON EVAC
- + SURTRON ABC
- x TOUCH HP 50D
- x TOUCH HP 80D
- x TOUCH HP 80
- x TOUCH HP 120
- x TOUCH HP 160
- x TOUCH HP 200
- x TOUCH HP 300
- x TOUCH HP 400
- x TOUCH HP EVAC

WATER PROOF IP67

00305.06_S

Description Waterproof double foot switch (6 pins)
Cable Length 5 m (196,85 in)
Size 35x6x18 cm (13,78x2,36x7 in)
Weight 1.3 kg (2,86lb)

 pcs: 1

- x 50 D
- x 80 D
- x 80
- x 120
- x 160
- x 200
- x TOUCH 200
- x FLASH 120
- x FLASH 160 HF
- x FLASH 200
- x 300 HP
- x 400 HP
- x SURTRON EVAC
- x SURTRON ABC
- x TOUCH HP 50D
- x TOUCH HP 80D
- x TOUCH HP 80
- x TOUCH HP 120
- x TOUCH HP 160
- x TOUCH HP 200
- x TOUCH HP 300
- x TOUCH HP 400
- x TOUCH HP EVAC



WATER PROOF  IP67

Description Waterproof double foot switch with selector (6 pins)
Cable Length 5 m (196,85 in)
Size 35x6x18 cm (13,78x2,36x7 in)
Weight 1.3 kg (2,86lb)

 pcs: 1

- x 50 D
- x 80 D
- x 80
- x 120
- x 160
- x 200
- + TOUCH 200
- x FLASH 120
- x FLASH 160 HF
- x FLASH 200
- x 300 HP
- x 400 HP
- x SURTRON EVAC
- x SURTRON ABC
- x TOUCH HP 50D
- x TOUCH HP 80D
- x TOUCH HP 80
- x TOUCH HP 120
- x TOUCH HP 160
- x TOUCH HP 200
- x TOUCH HP 300
- x TOUCH HP 400
- x TOUCH HP EVAC



WATER PROOF  IP67

Description Waterproof double foot switch with selector (6 pins)
Cable Length 5 m (196,85 in)
Size 35x6x18 cm (13,78x2,36x7 in)
Weight 1.3 kg (2,86lb)

 pcs: 1

- x 50 D
- x 80 D
- x 80
- x 120
- x 160
- x 200
- x TOUCH 200
- x FLASH 120
- x FLASH 160 HF
- x FLASH 200
- x 300 HP
- x 400 HP
- x SURTRON EVAC
- x SURTRON ABC
- x TOUCH HP 50D
- x TOUCH HP 80D
- x TOUCH HP 80
- x TOUCH HP 120
- x TOUCH HP 160
- x TOUCH HP 200
- + TOUCH HP 300
- x TOUCH HP 400
- x TOUCH HP EVAC



WATER PROOF  IP67



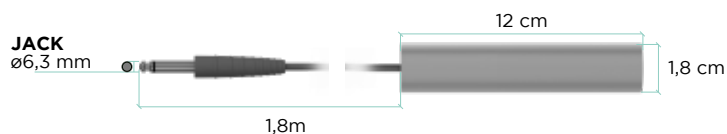
**NEU
TRAL**

Description Rod neutral electrode with cable
Cable Length 1,8 m (70,86 in)
Size 12xø1,8 cm (4,72x0,7 in)
Weight 0,1 kg (0,22 lb)
Sterilization NO
Sterilization cycles NO



- + 50 D
- + 80 D
- + 80
- + 120
- + 160
- + 200
- + TOUCH 200
- + FLASH 120
- + FLASH 160 HF
- + FLASH 200
- + 300 HP
- + 400 HP
- + SURTRON EVAC
- + SURTRON ABC
- + TOUCH HP 50D
- + TOUCH HP 80D
- + TOUCH HP 80
- + TOUCH HP 120
- + TOUCH HP 160
- + TOUCH HP 200
- + TOUCH HP 300
- + TOUCH HP 400
- + TOUCH HP EVAC

00400.00



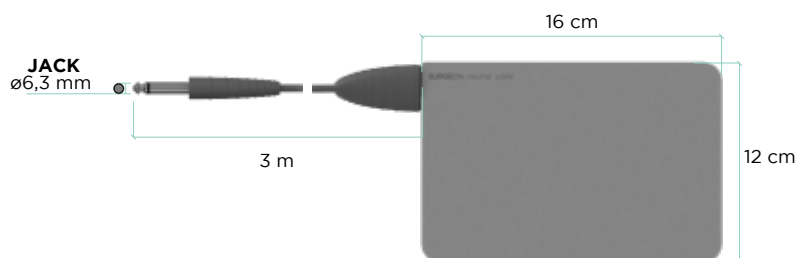
MAX. 120W Integrated connection

Description Steel neutral electrode with cable
Cable Length 3 m (118,11 in)
Size 16x12 cm (6,3x4,7 in)
Weight 0,1 kg (0,22 lb)
Sterilization NO
Sterilization cycles NO



- + 50 D
- + 80 D
- + 80
- + 120
- + 160
- + 200
- + TOUCH 200
- + FLASH 120
- + FLASH 160 HF
- + FLASH 200
- + 300 HP
- + 400 HP
- + SURTRON EVAC
- + SURTRON ABC
- + TOUCH HP 50D
- + TOUCH HP 80D
- + TOUCH HP 80
- + TOUCH HP 120
- + TOUCH HP 160
- + TOUCH HP 200
- + TOUCH HP 300
- + TOUCH HP 400
- + TOUCH HP EVAC

00401.00



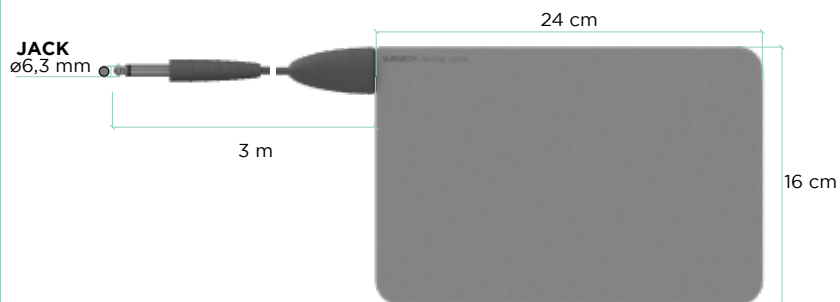
Integrated connection

Description Steel neutral electrode with cable
Cable Length 3 m (118,11 in)
Size 24x16 cm (9,4x6,3 in)
Weight 0,1 kg (0,22 lb)
Sterilization NO
Sterilization cycles NO



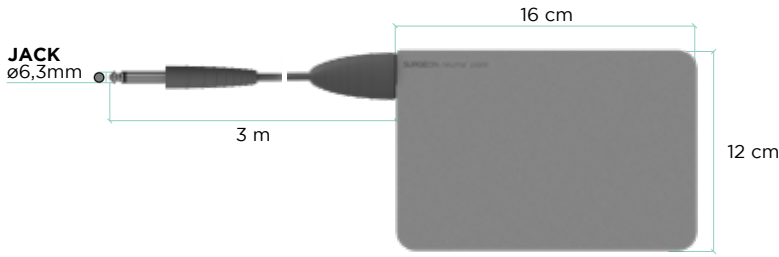
- + 50 D
- + 80 D
- + 80
- + 120
- + 160
- + 200
- + TOUCH 200
- + FLASH 120
- + FLASH 160 HF
- + FLASH 200
- + 300 HP
- + 400 HP
- + SURTRON EVAC
- + SURTRON ABC
- + TOUCH HP 50D
- + TOUCH HP 80D
- + TOUCH HP 80
- + TOUCH HP 120
- + TOUCH HP 160
- + TOUCH HP 200
- + TOUCH HP 300
- + TOUCH HP 400
- + TOUCH HP EVAC

00401.01



Integrated connection

00401.02



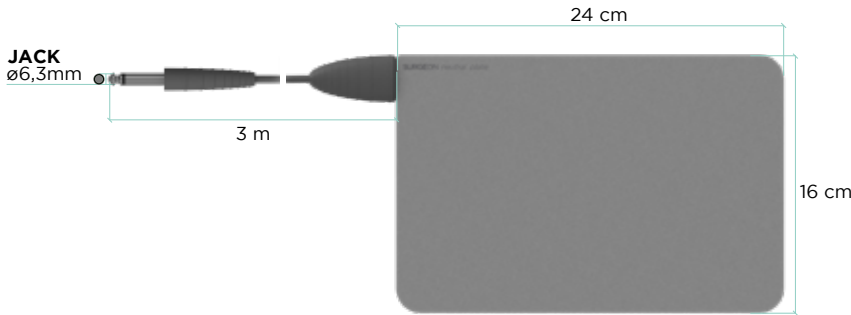
134°C
 Integrated connection

Description Steel neutral electrode autoclavable
Size WxHxD 16x12x0,4 cm (6,3x4,7x0,15 in)
Cable Length 3 m (118,11 in)
Weight 0,1 kg (0,22 lb)
Sterilization Autoclavable
Sterilization cycles 100

pcs: 1

- + 50 D
- + 80 D
- + 80
- + 120
- + 160
- + 200
- + TOUCH 200
- + FLASH 120
- + FLASH 160 HF
- + FLASH 200
- + 300 HP
- + 400 HP
- x SURTRON EVAC
- x SURTRON ABC
- + TOUCH HP 50D
- + TOUCH HP 80D
- + TOUCH HP 80
- + TOUCH HP 120
- + TOUCH HP 160
- + TOUCH HP 200
- + TOUCH HP 300
- + TOUCH HP 400
- x TOUCH HP EVAC

00401.03



134°C
 Integrated connection

Description Steel neutral electrode autoclavable
Size WxHxD 24x16x0,4 cm (9,4x6,3x0,15 in)
Cable Length 3 m (118,11 in)
Weight 0,1 kg (0,22 lb)
Sterilization Autoclavable
Sterilization cycles 100

pcs: 1

- + 50 D
- + 80 D
- + 80
- + 120
- + 160
- + 200
- + TOUCH 200
- + FLASH 120
- + FLASH 160 HF
- + FLASH 200
- + 300 HP
- + 400 HP
- x SURTRON EVAC
- x SURTRON ABC
- + TOUCH HP 50D
- + TOUCH HP 80D
- + TOUCH HP 80
- + TOUCH HP 120
- + TOUCH HP 160
- + TOUCH HP 200
- + TOUCH HP 300
- + TOUCH HP 400
- x TOUCH HP EVAC

00401.10



134°C
 100 CYCLES

Description Steel neutral electrode FLEX
Size WxHxD 12x21x0,2 cm (4,7x8,2x0,078 in)
Cable Length NO
Weight 0,01 Kg (0,02lb)
Sterilization Autoclavable
Sterilization cycles 100
Compatibility 00404.08, 00404.09, 00404.10, 00404.11

pcs: 1

- + 50 D
- + 80 D
- + 80
- + 120
- + 160
- + 200
- + TOUCH 200
- + FLASH 120
- + FLASH 160 HF
- + FLASH 200
- + 300 HP
- + 400 HP
- x SURTRON EVAC
- x SURTRON ABC
- + TOUCH HP 50D
- + TOUCH HP 80D
- + TOUCH HP 80
- + TOUCH HP 120
- + TOUCH HP 160
- + TOUCH HP 200
- + TOUCH HP 300
- + TOUCH HP 400
- x TOUCH HP EVAC

Description Steel neutral electrode FLEX with cable

Size WxHxD 12x21x0,2 cm (4,7x8,2x0,078 in)

Cable Length 3m (118,11 in)

Weight 0,01 Kg (0,02lb)

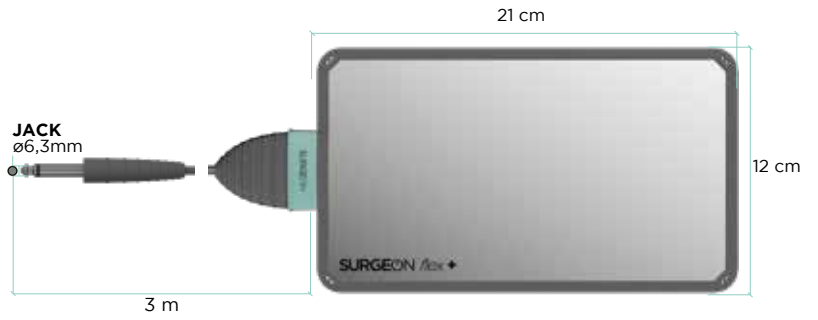
Sterilization NO

Sterilization cycles NO

 pcs: 1

- + 50 D
- + 80 D
- + 80
- + 120
- + 160
- + 200
- + TOUCH 200
- + FLASH 120
- + FLASH 160 HF
- + FLASH 200
- + 300 HP
- + 400 HP
- x SURTRON EVAC
- x SURTRON ABC
- + TOUCH HP 50D
- + TOUCH HP 80D
- + TOUCH HP 80
- + TOUCH HP 120
- + TOUCH HP 160
- + TOUCH HP 200
- + TOUCH HP 300
- + TOUCH HP 400
- x TOUCH HP EVAC

00401.11



Integrated connection

Description Steel neutral electrode FLEX with cable autoclavable

Size WxHxD 12x21x0,2 cm (4,7x8,2x0,078 in)

Cable Length 3m (118,11 in)

Weight 0,01 Kg (0,02lb)

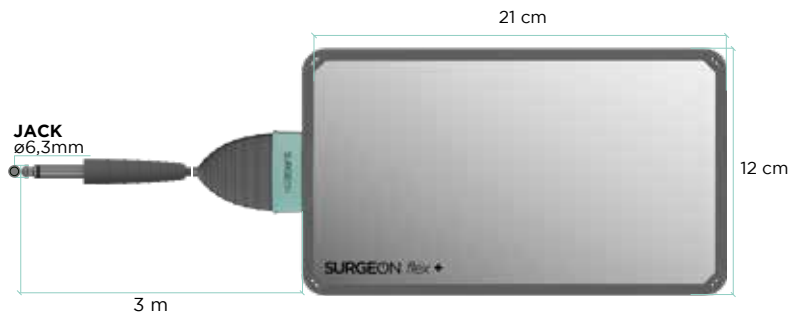
Sterilization Autoclavable

Sterilization cycles 100

 pcs: 1

- + 50 D
- + 80 D
- + 80
- + 120
- + 160
- + 200
- + TOUCH 200
- + FLASH 120
- + FLASH 160
- + FLASH 200
- + 300 HP
- + 400 HP
- x SURTRON EVAC
- x SURTRON ABC
- + TOUCH HP 50D
- + TOUCH HP 80D
- + TOUCH HP 80
- + TOUCH HP 120
- + TOUCH HP 160
- + TOUCH HP 200
- + TOUCH HP 300
- + TOUCH HP 400
- x TOUCH HP EVAC

00401.12



Integrated connection

134°C
11111



Description Steel neutral electrode FLEX S

Size WxHxD 12x21x0,2 cm (4,7x8,2x0,078 in)

Cable Length NO

Weight 0,01 Kg (0,02 lb)

Sterilization Autoclavable

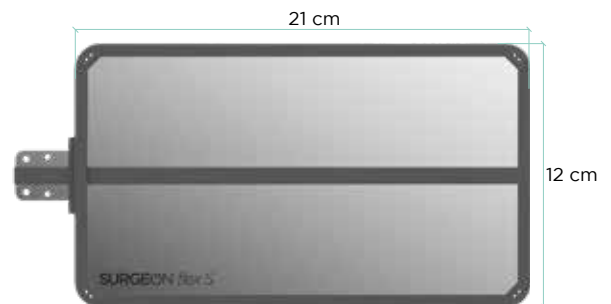
Sterilization cycles 100

Compatibility 00404.08, 00404.09, 00404.10, 00404.11

 pcs: 1

- x 50 D
- + 80 D
- + 80
- + 120
- + 160
- + 200
- + TOUCH 200
- + FLASH 120
- + FLASH 160 HF
- + FLASH 200
- + 300 HP
- + 400 HP
- x SURTRON EVAC
- x SURTRON ABC
- + TOUCH HP 50D
- + TOUCH HP 80D
- + TOUCH HP 80
- + TOUCH HP 120
- + TOUCH HP 160
- + TOUCH HP 200
- + TOUCH HP 300
- + TOUCH HP 400
- x TOUCH HP EVAC

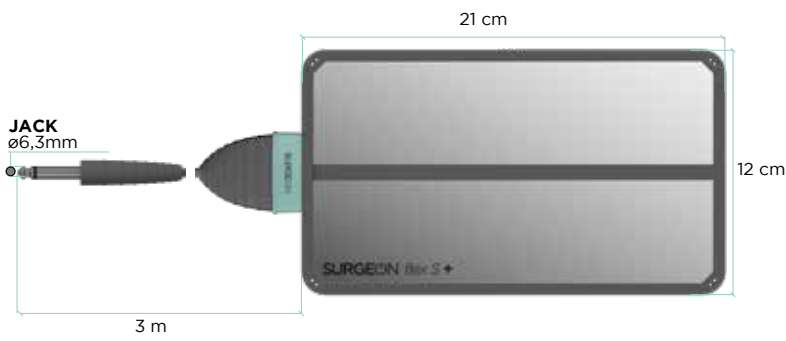
00401.20



134°C
11111



00401.21



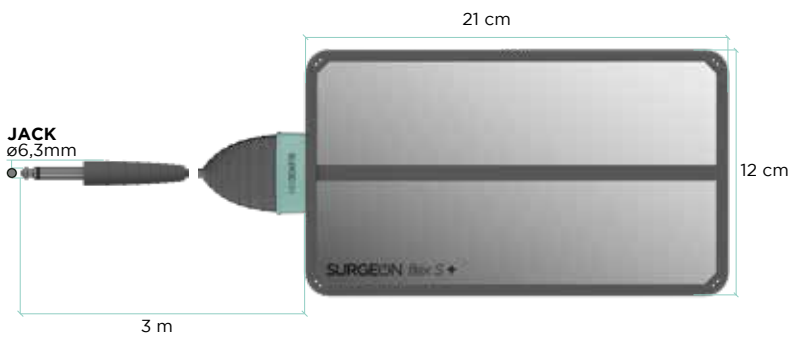
Integrated connection

Description	Steel neutral electrode FLEX S with cable
Size WxHxD	12x21x0,2 cm (4,7x8,2x0,078 in)
Cable Length	3 m (118,11 in)
Weight	0,01 Kg (0,02 lb)
Sterilization	NO
Sterilization cycles	NO

pcs: 1

- x 50 D
- + 80 D
- + 80
- + 120
- + 160
- + 200
- + TOUCH 200
- + FLASH 120
- + FLASH 160 HF
- + FLASH 200
- + 300 HP
- + 400 HP
- x SURTRON EVAC
- x SURTRON ABC
- x TOUCH HP 50D
- + TOUCH HP 80D
- + TOUCH HP 80
- + TOUCH HP 120
- + TOUCH HP 160
- + TOUCH HP 200
- + TOUCH HP 300
- + TOUCH HP 400
- x TOUCH HP EVAC

00401.22



Integrated connection

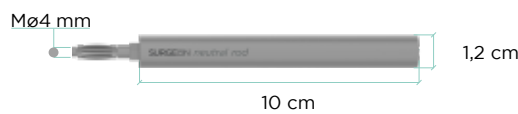


Description	Steel neutral electrode FLEX S with cable autoclavable
Size WxHxD	12x21x0,2 cm (4,7x8,2x0,078 in)
Cable Length	3 m (118,11 in)
Weight	0,01 kg (0,02 lb)
Sterilization	Autoclavable
Sterilization cycles	100

pcs: 1

- x 50 D
- + 80 D
- + 80
- + 120
- + 160
- + 200
- + TOUCH 200
- + FLASH 120
- + FLASH 160 HF
- + FLASH 200
- + 300 HP
- + 400 HP
- x SURTRON EVAC
- x SURTRON ABC
- x TOUCH HP 50D
- + TOUCH HP 80D
- + TOUCH HP 80
- + TOUCH HP 120
- + TOUCH HP 160
- + TOUCH HP 200
- + TOUCH HP 300
- + TOUCH HP 400
- x TOUCH HP EVAC

00403.01



Description	Steel neutral electrode autoclavable
Size WxHxD	10x1,2x1,2 cm (3,934x0,47x0,47 in)
Cable Length	NO
Weight	0,1 kg (0,22 lb)
Sterilization	Autoclavable
Sterilization cycles	100
Compatibility	00404.02, 00404.04

pcs: 1

- 50 D
- 1 x 80 D
- x 80
- x 120
- x 160
- x 200
- x TOUCH 200
- x FLASH 120
- x FLASH 160 HF
- x FLASH 200
- x 300 HP
- x 400 HP
- x SURTRON EVAC
- x SURTRON ABC
- 1 TOUCH HP 50D
- x TOUCH HP 80D
- x TOUCH HP 80
- x TOUCH HP 120
- x TOUCH HP 160
- x TOUCH HP 200
- x TOUCH HP 300
- x TOUCH HP 400
- x TOUCH HP EVAC

Description Rod neutral electrode
Size WxHxD 14x2x2 cm (5,5x0,78x0,78 in)
Cable Length NO
Weight 0,4 Kg (0,88 lb)
Sterilization Autoclavable
Sterilization cycles 100
Compatibility 00404.02, 00404.04

 pcs: 1

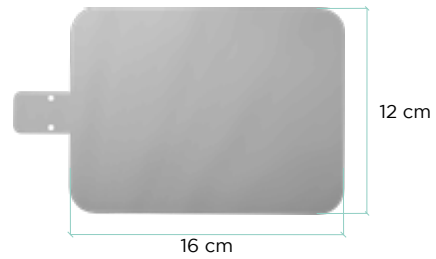
+ 50 D
 x 80 D
 x 80
 x 120
 x 160
 x 200
 x TOUCH 200
 x FLASH 120
 x FLASH 160 HF
 x FLASH 200
 x 300 HP
 x 400 HP
 x SURTRON EVAC
 x SURTRON ABC
 + TOUCH HP 50D
 + TOUCH HP 80D
 x TOUCH HP 80
 x TOUCH HP 120
 x TOUCH HP 160
 x TOUCH HP 200
 x TOUCH HP 300
 x TOUCH HP 400
 x TOUCH HP EVAC



Description Steel neutral electrode
Size WxHxD 16x12x0,02 cm (6,3x4,7x0,008 in)
Cable Length NO
Weight 0,1 kg (0,22 lb)
Sterilization Autoclavable
Sterilization cycles 100
Compatibility 00404.08, 00404.09, 00404.10, 00404.11

 pcs: 1

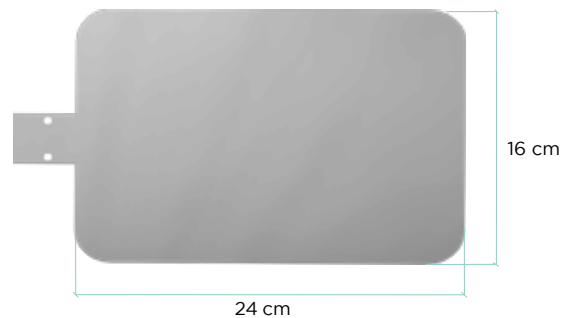
+ 50 D
 1 80 D
 1 80
 1 120
 1 160
 1 200
 1 TOUCH 200
 1 FLASH 120
 1 FLASH 160 HF
 1 FLASH 200
 + 300 HP
 + 400 HP
 x SURTRON EVAC
 x SURTRON ABC
 + TOUCH HP 50D
 + TOUCH HP 80D
 1 TOUCH HP 80
 1 TOUCH HP 120
 1 TOUCH HP 160
 1 TOUCH HP 200
 + TOUCH HP 300
 + TOUCH HP 400
 x TOUCH HP EVAC



Description Steel neutral electrode
Size WxHxD 24x16x0,02 cm (9,4x6,3x0,008 in)
Cable Length NO
Weight 0,1 kg (0,22 lb)
Sterilization Autoclavable
Sterilization cycles 100
Compatibility 00404.08, 00404.09, 00404.10, 00404.11

 pcs: 1

+ 50 D
 + 80 D
 + 80
 + 120
 + 160
 + 200
 + TOUCH 200
 + FLASH 120
 + FLASH 160 HF
 + FLASH 200
 + 300 HP
 + 400 HP
 x SURTRON EVAC
 x SURTRON ABC
 + TOUCH HP 50D
 + TOUCH HP 80D
 + TOUCH HP 80
 + TOUCH HP 120
 + TOUCH HP 160
 + TOUCH HP 200
 + TOUCH HP 300
 + TOUCH HP 400
 x TOUCH HP EVAC

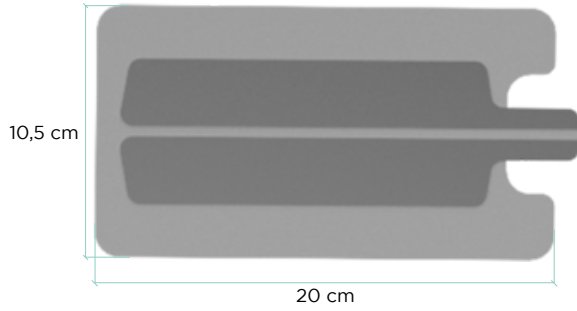


00403.02

5365A

6429A

F7920

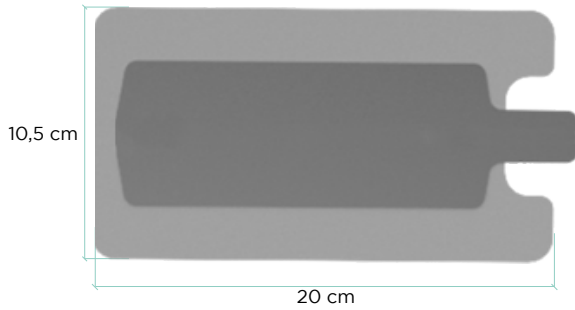


Description Disposable split neutral electrode (F7820)
Size WxHxD 20x10,5x0,2 cm (7,8x4,1x0,078 in)
Cable Length NO
Weight 0,01 Kg (0,02 lb)
Sterilization NO
Sterilization cycles NO
Compatibility 00404.08, 00404.09, 00404.10, 00404.11



- x 50 D
- + 80 D
- + 80
- + 120
- + 160
- + 200
- 2 TOUCH 200
- 2 FLASH 120
- 2 FLASH 160 HF
- 2 FLASH 200
- 5 300 HP
- 5 400 HP
- x SURTRON EVAC
- x SURTRON ABC
- x TOUCH HP 50D
- + TOUCH HP 80D
- + TOUCH HP 80
- + TOUCH HP 120
- + TOUCH HP 160
- 2 TOUCH HP 200
- 5 TOUCH HP 300
- 5 TOUCH HP 400
- x TOUCH HP EVAC

0350

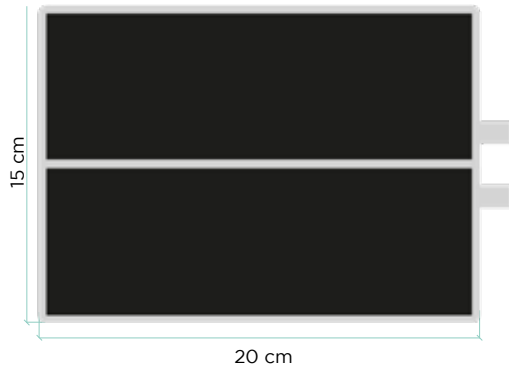


Description Disposable neutral electrode
Size WxHxD 20x10,5x0,2cm (7,8x4,1x0,078in)
Cable Length NO
Weight 0,01 Kg (0,02lb)
Sterilization Autoclavable
Sterilisation cycles 100



- + 50 D
- + 80 D
- + 80
- + 120
- + 160
- + 200
- 2 TOUCH 200
- 2 FLASH 120
- 2 FLASH 160 HF
- 2 FLASH 200
- + 300 HP
- + 400 HP
- x SURTRON EVAC
- x SURTRON ABC
- + TOUCH HP 50D
- + TOUCH HP 80D
- + TOUCH HP 80
- + TOUCH HP 120
- + TOUCH HP 160
- + TOUCH HP 200
- + TOUCH HP 300
- + TOUCH HP 400
- x TOUCH HP EVAC

F7930



Description Conductive rubber neutral electrode
Size WxHxD 20x10,5x0,4 cm (7,8x4,1x0,15 in)
Cable Length NO
Weight 0,1 Kg (0,2lb)
Sterilization NO
Sterilization cycles NO
Compatibility 00404.07



- + 50 D
- + 80 D
- + 80
- + 120
- + 160
- + 200
- + TOUCH 200
- + FLASH 120
- + FLASH 160
- + FLASH 200
- + 300 HP
- + 400 HP
- x SURTRON EVAC
- x SURTRON ABC
- x TOUCH HP 50D
- + TOUCH HP 80D
- + TOUCH HP 80
- + TOUCH HP 120
- + TOUCH HP 160
- + TOUCH HP 200
- + TOUCH HP 300
- + TOUCH HP 400
- x TOUCH HP EVAC

F7520



Description Electrode cleaning sponge
Size WxHxD 5x5 cm (1.96x1.96 in)
Weight 0,02Kg (0,04lb)
Sterilization NO
Sterilization cycles NO

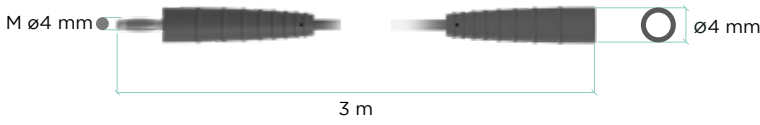


- + 50 D
- + 80 D
- + 80
- + 120
- + 160
- + 200
- + TOUCH 200
- + FLASH 120
- + FLASH 160
- + FLASH 200
- 1 300 HP
- 1 400 HP
- x SURTRON EVAC
- x SURTRON ABC
- x TOUCH HP 50D
- + TOUCH HP 80D
- + TOUCH HP 80
- + TOUCH HP 120
- + TOUCH HP 160
- + TOUCH HP 200
- 1 TOUCH HP 300
- x TOUCH HP 400
- x TOUCH HP EVAC



CON NECT ION

00402.00



Description Monopolar Cable M4-F4
Weight 0,06 kg (0,13lb)
Cable Length 3 m (118,11 in)
Sterilization Autoclavable
Sterilization cycles 100



- + 50 D
- + 80 D
- + 80
- + 120
- + 160
- + 200
- + TOUCH 200
- + FLASH 120
- + FLASH 160 HF
- + FLASH 200
- + 300 HP
- + 400 HP
- x SURTRON EVAC
- x SURTRON ABC
- + TOUCH HP 50D
- + TOUCH HP 80D
- + TOUCH HP 80
- + TOUCH HP 120
- + TOUCH HP 160
- + TOUCH HP 200
- + TOUCH HP 300
- + TOUCH HP 400
- x TOUCH HP EVAC

00402.01



Description Monopolar Cable M4-F2,8
Weight 0,06 kg (0,13 lb)
Cable Length 3 m (118,11 in)
Sterilization Autoclavable
Sterilization cycles 100



- + 50 D
- + 80 D
- + 80
- + 120
- + 160
- + 200
- + TOUCH 200
- + FLASH 120
- + FLASH 160 HF
- + FLASH 200
- + 300 HP
- + 400 HP
- x SURTRON EVAC
- x SURTRON ABC
- + TOUCH HP 50D
- + TOUCH HP 80D
- + TOUCH HP 80
- + TOUCH HP 120
- + TOUCH HP 160
- + TOUCH HP 200
- + TOUCH HP 300
- + TOUCH HP 400
- x TOUCH HP EVAC

00402.02

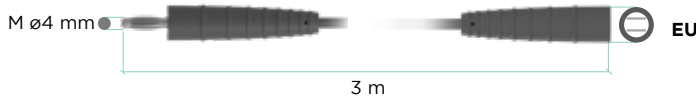


Description Monopolar Cable M4-MP4
Weight 0,06 kg (0,13 lb)
Cable Length 3 m (118,11 in)
Sterilization Autoclavable
Sterilization cycles 100



- + 50 D
- + 80 D
- + 80
- + 120
- + 160
- + 200
- + TOUCH 200
- + FLASH 120
- + FLASH 160 HF
- + FLASH 200
- + 300 HP
- + 400 HP
- x SURTRON EVAC
- x SURTRON ABC
- + TOUCH HP 50D
- + TOUCH HP 80D
- + TOUCH HP 80
- + TOUCH HP 120
- + TOUCH HP 160
- + TOUCH HP 200
- + TOUCH HP 300
- + TOUCH HP 400
- x TOUCH HP EVAC

00402.03



Description Monopolar Cable M4-EU
Weight 0,06 kg (0,13 lb)
Cable Length 3 m (118,11 in)
Sterilization Autoclavable
Sterilization cycles 100



- + 50 D
- + 80 D
- + 80
- + 120
- + 160
- + 200
- + TOUCH 200
- + FLASH 120
- + FLASH 160 HF
- + FLASH 200
- + 300 HP
- + 400 HP
- x SURTRON EVAC
- x SURTRON ABC
- + TOUCH HP 50D
- + TOUCH HP 80D
- + TOUCH HP 80
- + TOUCH HP 120
- + TOUCH HP 160
- + TOUCH HP 200
- + TOUCH HP 300
- + TOUCH HP 400
- x TOUCH HP EVAC

Description Monopolar Cable M4-F2+2,8 mm
Weight 0,06 kg (0,13 lb)
Cable Length 3 m (118,11 in)
Sterilization Autoclavable
Sterilization cycles 100

00402.04

pcs: 1

- + 50 D
- + 80 D
- + 80
- + 120
- + 160
- + 200
- + TOUCH 200
- + FLASH 120
- + FLASH 160
- + FLASH 200
- + 300 HP
- + 400 HP
- x SURTRON EVAC
- x SURTRON ABC
- + TOUCH HP 50D
- + TOUCH HP 80D
- + TOUCH HP 80
- + TOUCH HP 120
- + TOUCH HP 160
- + TOUCH HP 200
- + TOUCH HP 300
- + TOUCH HP 400
- x TOUCH HP EVAC

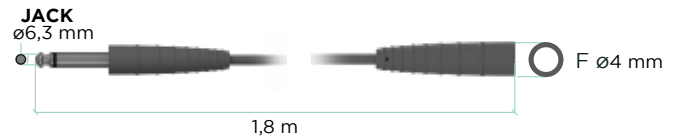


Description Monopolar Cable J6.3-F4
Weight 0,06 kg (0,13 lb)
Cable Length 1,8 m (70,86 in)
Sterilization NO
Sterilization cycles NO

00404.02

pcs: 1

- 1 x 50 D
- x 80 D
- x 80
- x 120
- x 160
- x 200
- x TOUCH 200
- x FLASH 120
- x FLASH 160
- x FLASH 200
- x 300 HP
- x 400 HP
- x SURTRON EVAC
- x SURTRON ABC
- 1 x TOUCH HP 50D
- x TOUCH HP 80D
- x TOUCH HP 80
- x TOUCH HP 120
- x TOUCH HP 160
- x TOUCH HP 200
- x TOUCH HP 300
- x TOUCH HP 400
- x TOUCH HP EVAC

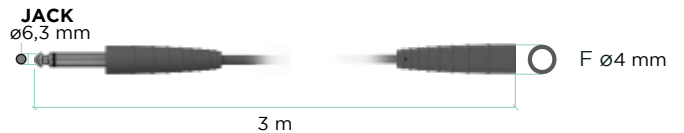


Description Cable for rod neutral electrode autoclavable
Weight 0,06 kg (0,13 lb)
Cable Length 3 m (118 in)
Unit Connection 4 mm (0,157 in)
Sterilization Autoclavable
Sterilization cycles 100

00404.04

pcs: 1

- + 50 D
- x 80 D
- x 80
- x 120
- x 160
- x 200
- x TOUCH 200
- x FLASH 120
- x FLASH 160 HF
- x FLASH 200
- x 300 HP
- x 400 HP
- x SURTRON EVAC
- x SURTRON ABC
- + TOUCH HP 50D
- x TOUCH HP 80D
- x TOUCH HP 80
- x TOUCH HP 120
- x TOUCH HP 160
- x TOUCH HP 200
- x TOUCH HP 300
- x TOUCH HP 400
- x TOUCH HP EVAC

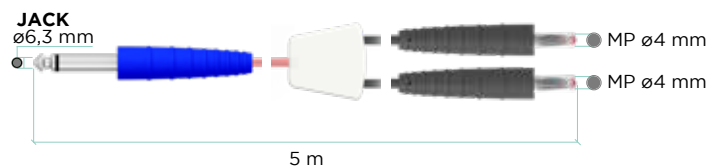


Description Cable for neutral plate J6.3-MP4 (F7922)
Cable Length 5m (196,85 in)
Compatibility F7930 F7915

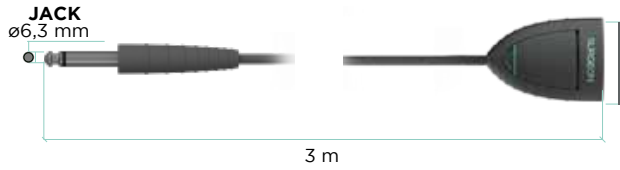
00404.07

pcs: 1

- x 50 D
- + 80 D
- + 80
- + 120
- + 160
- + 200
- + TOUCH 200
- + FLASH 120
- + FLASH 160 HF
- + FLASH 200
- + 300 HP
- + 400 HP
- x SURTRON EVAC
- x SURTRON ABC
- x TOUCH HP 50D
- + TOUCH HP 80D
- + TOUCH HP 80
- + TOUCH HP 120
- + TOUCH HP 160
- + TOUCH HP 200
- + TOUCH HP 300
- + TOUCH HP 400
- x TOUCH HP EVAC



00404.08_S

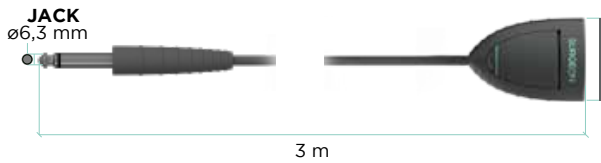


Description Cable for neutral electrode disposable type 5365/6429/FLEX
Weight 0,06 kg (0,13 lb)
Cable Length 3 m (118,11 in)
Sterilization NO
Sterilization cycles NO
Compatibility 0350, F790, 00401.10, 00401.20, 5365A, 6429A

pcs: 1

+ 50 D
 + 80 D
 + 80
 + 120
 + 160
 + 200
 + TOUCH 200
 + FLASH 120
 + FLASH 160 HF
 + FLASH 200
 + 300 HP
 + 400 HP
 x SURTRON EVAC
 x SURTRON ABC
 + TOUCH HP 50D
 + TOUCH HP 80D
 + TOUCH HP 80
 + TOUCH HP 120
 + TOUCH HP 160
 + TOUCH HP 200
 + TOUCH HP 300
 + TOUCH HP 400
 x TOUCH HP EVAC

00404.09



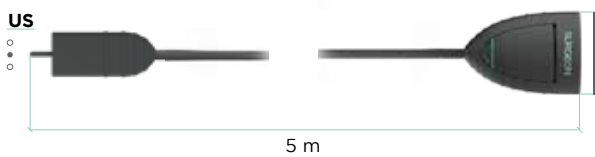
Description Cable for connection neutral disposable 5365-6429/FLEX FLEX S AUTOCLAVE
Weight 0,06 kg (0,13 lb)
Cable Length 3 m (118,11 in)
Sterilization Autoclavable
Sterilization cycles 100
Compatibility 0350, F790, 00401.10, 00401.20, 5365A, 6429A

pcs: 1

+ 50 D
 + 80 D
 + 80
 + 120
 + 160
 + 200
 + TOUCH 200
 + FLASH 120
 + FLASH 160 HF
 + FLASH 200
 + 300 HP
 + 400 HP
 x SURTRON EVAC
 x SURTRON ABC
 + TOUCH HP 50D
 + TOUCH HP 80D
 + TOUCH HP 80
 + TOUCH HP 120
 + TOUCH HP 160
 + TOUCH HP 200
 + TOUCH HP 300
 + TOUCH HP 400
 x TOUCH HP EVAC



00404.10



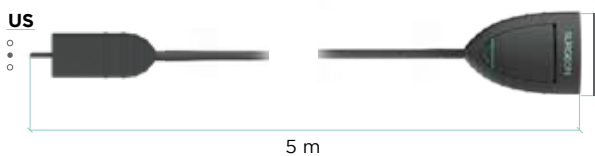
Description Cable for neutral plate US type
Weight 0,06 kg (0,13 lb)
Cable Length 5 m (169,85 in)
Sterilization NO
Sterilization cycles NO
Compatibility 0350, F790, 00401.10, 00401.20, 5365A, 6429A

pcs: 1

+ 50 D
 + 80 D
 + 80
 + 120
 + 160
 + 200
 + TOUCH 200
 + FLASH 120
 + FLASH 160 HF
 + FLASH 200
 + 300 HP
 + 400 HP
 x SURTRON EVAC
 x SURTRON ABC
 + TOUCH HP 50D
 + TOUCH HP 80D
 + TOUCH HP 80
 + TOUCH HP 120
 + TOUCH HP 160
 + TOUCH HP 200
 + TOUCH HP 300
 + TOUCH HP 400
 x TOUCH HP EVAC

+A compatible only if you use 00498.06 adapter

00404.11



Description Cable for neutral plate US type AUTOCLAVE
Weight 0,06 kg (0,13 lb)
Cable Length 5 m (169,85 in)
Sterilization Autoclavable
Sterilization cycles 100
Compatibility 0350, F790, 00401.10, 00401.20, 5365A, 6429A

pcs: 1

+ 50 D
 + 80 D
 + 80
 + 120
 + 160
 + 200
 + TOUCH 200
 + FLASH 120
 + FLASH 160 HF
 + FLASH 200
 + 300 HP
 + 400 HP
 x SURTRON EVAC
 x SURTRON ABC
 + TOUCH HP 50D
 + TOUCH HP 80D
 + TOUCH HP 80
 + TOUCH HP 120
 + TOUCH HP 160
 + TOUCH HP 200
 + TOUCH HP 300
 + TOUCH HP 400
 x TOUCH HP EVAC

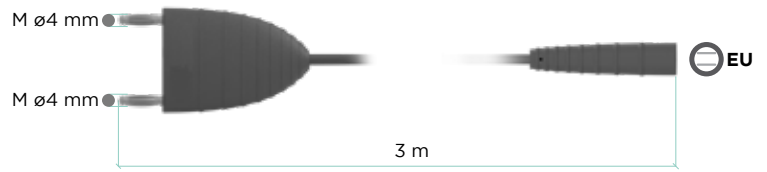
+A compatible only if you use 00498.06 adapter

Description Bipolar cable EUR
Weight 0,06 kg (0,13 lb)
Cable Length 3 m (118,11 in)
Sterilization Autoclavable
Sterilization cycles 100
Compatibility 310 Bipolar Forceps series

 pcs: 1

x 50 D
 x 80 D
 + 80
 A
 + 120
 A
 + 160
 A
 + 200
 + TOUCH 200
 + FLASH 120
 + FLASH 160 HF
 + FLASH 200
 + 300 HP
 + 400 HP
 x SURTRON EVAC
 x SURTRON ABC
 x TOUCH HP 50D
 x TOUCH HP 80D
 x TOUCH HP 80
 A
 + TOUCH HP 120
 A
 + TOUCH HP 160
 A
 + TOUCH HP 200
 + TOUCH HP 300
 + TOUCH HP 400
 x TOUCH HP EVAC

00411.00



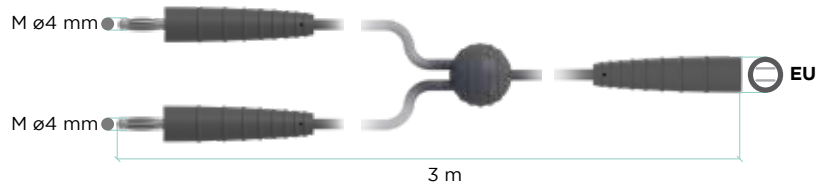
+A  compatible only if you use 00498.00 adapter  

Description Bipolar cable TWIN
Weight 0,06 kg (0,13 lb)
Cable Length 3 m (118,11 in)
Sterilization Autoclavable
Sterilization cycles 100
Compatibility 310 Bipolar Forceps series

 pcs: 1

x 50 D
 x 80 D
 + 80
 A
 + 120
 A
 + 160
 A
 + 200
 + TOUCH 200
 + FLASH 120
 + FLASH 160 HF
 + FLASH 200
 + 300 HP
 + 400 HP
 x SURTRON EVAC
 x SURTRON ABC
 x TOUCH HP 50D
 x TOUCH HP 80D
 x TOUCH HP 80
 A
 + TOUCH HP 120
 A
 + TOUCH HP 160
 A
 + TOUCH HP 200
 + TOUCH HP 300
 + TOUCH HP 400
 x TOUCH HP EVAC

00412.00



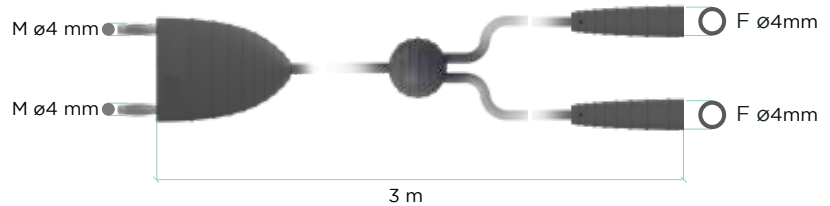
+A  compatible only if you use 00498.00 adapter  




Description Artery Sealer Bipolar cable
Weight 0,06 kg (0,13 lb)
Cable Length 3 m (118,11 in)
Sterilization Autoclavable
Sterilization cycles 100
Compatibility 110-750NS, 110-755NS, 110-760NS,

 pcs: 1

x 50 D
 x 80 D
 + 80
 A
 + 120
 A
 + 160
 A
 + 200
 + TOUCH 200
 + FLASH 120
 + FLASH 160 HF
 + FLASH 200
 + 300 HP
 + 400 HP
 x SURTRON EVAC
 x SURTRON ABC
 x TOUCH HP 50D
 x TOUCH HP 80D
 x TOUCH HP 80
 A
 + TOUCH HP 120
 A
 + TOUCH HP 160
 A
 + TOUCH HP 200
 + TOUCH HP 300
 + TOUCH HP 400
 x TOUCH HP EVAC

00413.00



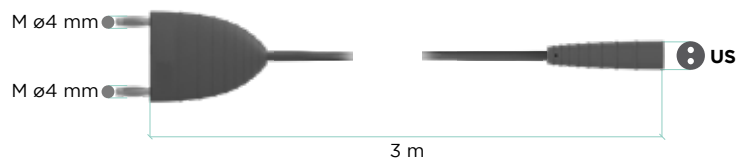
+A  compatible only if you use 00498.00 adapter  




Description Bipolar cable US 3m
Weight 0,60 g (0,13 lb)
Cable Length 3 m (118,11 in)
Sterilization Autoclavable
Sterilization cycles 100
Compatibility 110-700

 pcs: 1

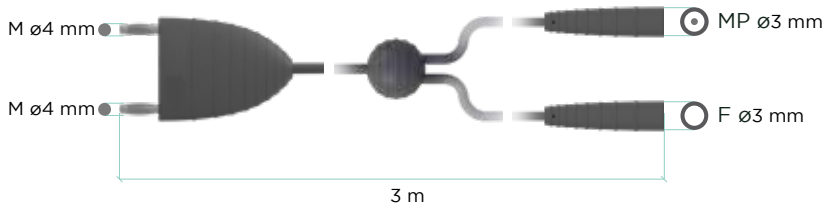
x 50 D
 x 80 D
 + 80
 A
 + 120
 A
 + 160
 A
 + 200
 + TOUCH 200
 + FLASH 120
 + FLASH 160 HF
 + FLASH 200
 + 300 HP
 + 400 HP
 x SURTRON EVAC
 x SURTRON ABC
 x TOUCH HP 50D
 x TOUCH HP 80D
 x TOUCH HP 80
 A
 + TOUCH HP 120
 A
 + TOUCH HP 160
 A
 + TOUCH HP 200
 + TOUCH HP 300
 + TOUCH HP 400
 x TOUCH HP EVAC

00414.00



+A  compatible only if you use 00498.00 adapter  

00415.00



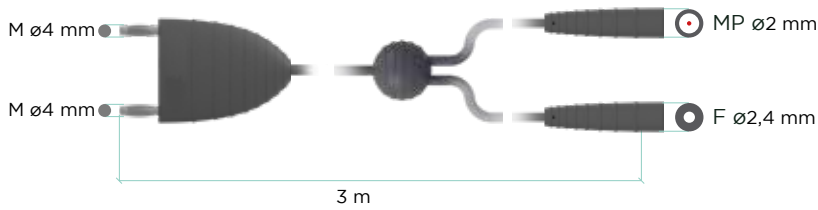
134°C
CICLI 100 CYCLES
+A compatible only if you use 00498.00 adapter

Description Bipolar cable ENDO (MP3 - F3)
Weight 0,06 kg (0,13 lb)
Cable Length 3 m (118,11 in)
Sterilization Autoclavable
Sterilization cycles 100

pcs: 1

- x 50 D
- x 80 D
- + 80 A
- + 120 A
- + 160 A
- + 200 A
- + TOUCH 200
- + FLASH 120
- + FLASH 160 HF
- + FLASH 200
- + 300 HP
- + 400 HP
- x SURTRON EVAC
- x SURTRON ABC
- x TOUCH HP 50D
- x TOUCH HP 80D
- + TOUCH HP 80 A
- + TOUCH HP 120 A
- + TOUCH HP 160 A
- + TOUCH HP 200
- + TOUCH HP 300
- + TOUCH HP 400
- x TOUCH HP EVAC

00416.00



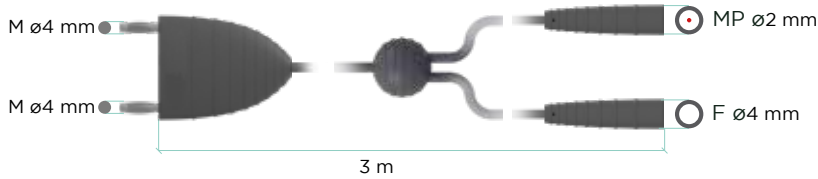
134°C
CICLI 100 CYCLES
+A compatible only if you use 00498.00 adapter

Description Bipolar cable ENDO (MP2 - F2,4)
Weight 0,06 kg (0,13 lb)
Cable Length 3 m (118,11 in)
Sterilization Autoclavable
Sterilization cycles 100

pcs: 1

- x 50 D
- x 80 D
- + 80 A
- + 120 A
- + 160 A
- + 200 A
- + TOUCH 200
- + FLASH 120
- + FLASH 160 HF
- + FLASH 200
- + 300 HP
- + 400 HP
- x SURTRON EVAC
- x SURTRON ABC
- x TOUCH HP 50D
- x TOUCH HP 80D
- + TOUCH HP 80 A
- + TOUCH HP 120 A
- + TOUCH HP 160 A
- + TOUCH HP 200
- + TOUCH HP 300
- + TOUCH HP 400
- x TOUCH HP EVAC

00417.00



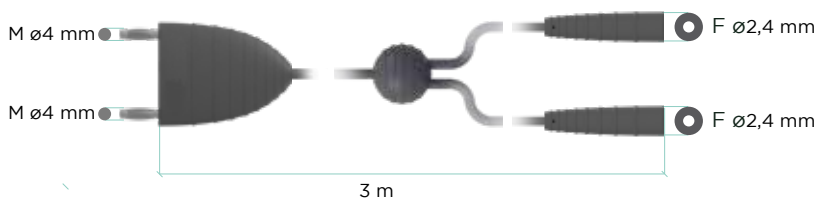
134°C
CICLI 100 CYCLES
+A compatible only if you use 00498.00 adapter

Description Bipolar cable ENDO3 (MP2-F4)
Weight 0,06 kg (0,13 lb)
Cable Length 3 m (118,11 in)
Sterilization Autoclavable
Sterilization cycles 100

pcs: 1

- x 50 D
- x 80 D
- + 80 A
- + 120 A
- + 160 A
- + 200 A
- + TOUCH 200
- + FLASH 120
- + FLASH 160 HF
- + FLASH 200
- + 300 HP
- + 400 HP
- x SURTRON EVAC
- x SURTRON ABC
- x TOUCH HP 50D
- x TOUCH HP 80D
- + TOUCH HP 80 A
- + TOUCH HP 120 A
- + TOUCH HP 160 A
- + TOUCH HP 200
- + TOUCH HP 300
- + TOUCH HP 400
- x TOUCH HP EVAC

00418.00



134°C
CICLI 100 CYCLES
+A compatible only if you use 00498.00 adapter

Description Bipolar cable ENDO3 (2xM4 2xF2.4)
Weight 0,06 kg (0,13 lb)
Cable Length 3 m (118,11 in)
Sterilization Autoclavable
Sterilization cycles 100

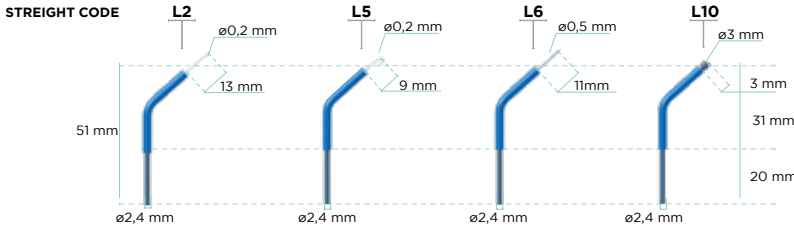
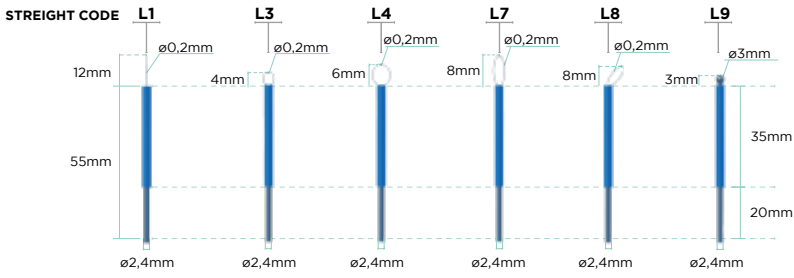
pcs: 1

- x 50 D
- x 80 D
- + 80 A
- + 120 A
- + 160 A
- + 200 A
- + TOUCH 200
- + FLASH 120
- + FLASH 160 HF
- + FLASH 200
- + 300 HP
- + 400 HP
- x SURTRON EVAC
- x SURTRON ABC
- x TOUCH HP 50D
- x TOUCH HP 80D
- + TOUCH HP 80 A
- + TOUCH HP 120 A
- + TOUCH HP 160 A
- + TOUCH HP 200
- + TOUCH HP 300
- + TOUCH HP 400
- x TOUCH HP EVAC



ELEC TRODE

00500.00



Description Kit of assorted electrode length 5 cm (10pcs)

SINGLE ITEM

- 500500.L1: Straight thin wire electrode (5pcs)
- 500500.L3: Loop electrode $\varnothing 4$ mm (5pcs)
- 500500.L4: Loop electrode $\varnothing 6$ mm (5pcs)
- 500500.L7: Drop electrode length (5pcs)
- 500500.L8: Noose electrode length (5pcs)
- 500500.L9: Straight ball electrode $\varnothing 3$ mm (5pcs)
- 500500.L2: Bent thin wire electrode (5pcs)
- 500500.L5: Drop electrode length (5pcs)
- 500500.L6: Bent thick wire electrode (5pcs)
- 500500.L10: Bent5 ball electrode $\varnothing 3$ mm (5pcs)

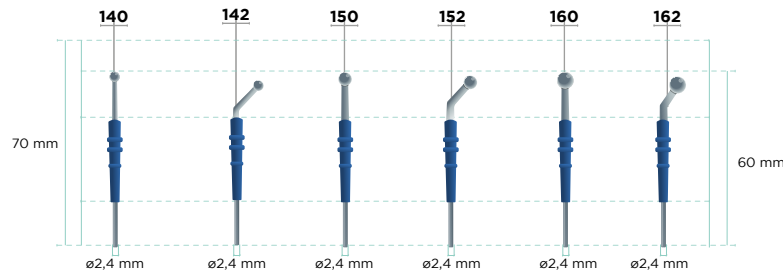
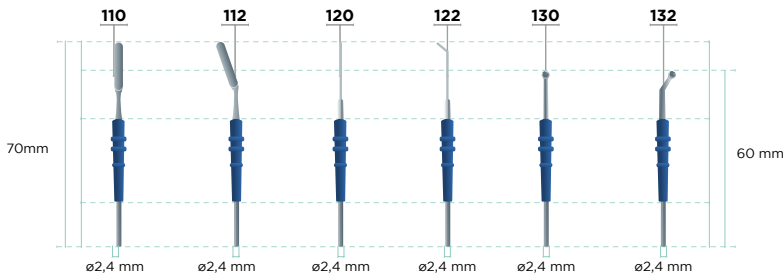
Compatibility 00205.00, 00206.00, 755VL

50 D	TOUCH 200	x	SURTRON EVAC
80 D	FLASH 120	x	SURTRON ABC
80	FLASH 160 HF	1	TOUCH HP 50D
120	FLASH 200	1	TOUCH HP 80D
160	FLASH 200	1	TOUCH HP 80
200	300 HP	1	TOUCH HP 120
TOUCH 200	400 HP	1	TOUCH HP 160
FLASH 120	400 HP	1	TOUCH HP 200
FLASH 160 HF	300 HP	1	TOUCH HP 300
FLASH 200	400 HP	x	TOUCH HP 400
300 HP	SURTRON EVAC	x	TOUCH HP EVAC
400 HP	SURTRON ABC	x	



kit 00500.00: assorted pcs 10
from 00500.L1 to 00500.L10

152 Short



Description

- 152-110 Blade Electrode 7 cm
- 152-120 Needle Electrode 7 cm
- 152-150 Ball Electrode $\varnothing 4$ mm 6 cm

50 D	TOUCH 200	x	SURTRON EVAC
80 D	FLASH 120	x	SURTRON ABC
80	FLASH 160 HF	1	TOUCH HP 50D
120	FLASH 200	1	TOUCH HP 80D
160	FLASH 200	1	TOUCH HP 80
200	300 HP	1	TOUCH HP 120
TOUCH 200	400 HP	1	TOUCH HP 160
FLASH 120	400 HP	1	TOUCH HP 200
FLASH 160 HF	300 HP	1	TOUCH HP 300
FLASH 200	400 HP	x	TOUCH HP 400
300 HP	SURTRON EVAC	x	TOUCH HP EVAC
400 HP	SURTRON ABC	x	

- 152-112 Blade Curved Electrode 7 cm
- 152-122 Needle Electrode 7 cm
- 152-130 Ball Electrode $\varnothing 2$ mm 6 cm
- 152-132 Ball Curved Electrode $\varnothing 2$ mm 5 cm
- 152-140 Ball Electrode $\varnothing 3$ mm 6 cm
- 152-142 Ball Curved Electrode $\varnothing 3$ mm 6 cm

50 D	TOUCH 200	x	SURTRON EVAC
80 D	FLASH 120	x	SURTRON ABC
80	FLASH 160 HF	1	TOUCH HP 50D
120	FLASH 200	1	TOUCH HP 80D
160	FLASH 200	1	TOUCH HP 80
200	300 HP	1	TOUCH HP 120
TOUCH 200	400 HP	1	TOUCH HP 160
FLASH 120	400 HP	1	TOUCH HP 200
FLASH 160 HF	300 HP	1	TOUCH HP 300
FLASH 200	400 HP	x	TOUCH HP 400
300 HP	SURTRON EVAC	x	TOUCH HP EVAC
400 HP	SURTRON ABC	x	

- 152-152 Ball Curved Electrode $\varnothing 4$ mm 6 cm

50 D	TOUCH 200	x	SURTRON EVAC
80 D	FLASH 120	x	SURTRON ABC
80	FLASH 160 HF	1	TOUCH HP 50D
120	FLASH 200	1	TOUCH HP 80D
160	FLASH 200	1	TOUCH HP 80
200	300 HP	1	TOUCH HP 120
TOUCH 200	400 HP	1	TOUCH HP 160
FLASH 120	400 HP	1	TOUCH HP 200
FLASH 160 HF	300 HP	1	TOUCH HP 300
FLASH 200	400 HP	x	TOUCH HP 400
300 HP	SURTRON EVAC	x	TOUCH HP EVAC
400 HP	SURTRON ABC	x	

- 152-160 Ball Electrode $\varnothing 5$ mm 6 cm
- 152-162 Ball Curved Electrode $\varnothing 5$ mm 6 cm

50 D	TOUCH 200	x	SURTRON EVAC
80 D	FLASH 120	x	SURTRON ABC
80	FLASH 160 HF	1	TOUCH HP 50D
120	FLASH 200	1	TOUCH HP 80D
160	FLASH 200	1	TOUCH HP 80
200	300 HP	1	TOUCH HP 120
TOUCH 200	400 HP	1	TOUCH HP 160
FLASH 120	400 HP	1	TOUCH HP 200
FLASH 160 HF	300 HP	1	TOUCH HP 300
FLASH 200	400 HP	x	TOUCH HP 400
300 HP	SURTRON EVAC	x	TOUCH HP EVAC
400 HP	SURTRON ABC	x	

Compatibility 00205.00, 00206.00, 755VL



Description Kit of assorted electrode length 10 cm (10pcs)

SINGLE ITEM

- 500500.L1/L: Straight thin wire electrode length (5pcs)
- 500500.L3/L: Loop electrode ø4 mm length (5pcs)
- 500500.L4/L: Loop electrode ø6 mm (5pcs)
- 500500.L7/L: Drop electrode length (5pcs)
- 500500.L8/L: Noose electrode length (5pcs)
- 500500.L9/L: Straight ball electrode ø3 mm (5pcs)
- 500500.L2/L: Bent thin wire electrode (5pcs)
- 500500.L5/L: Bent hook electrode (5pcs)
- 500500.L6/L: Bent thick wire electrode (5pcs)
- 500500.L10/L: Straight ball electrode ø3 mm (5pcs)

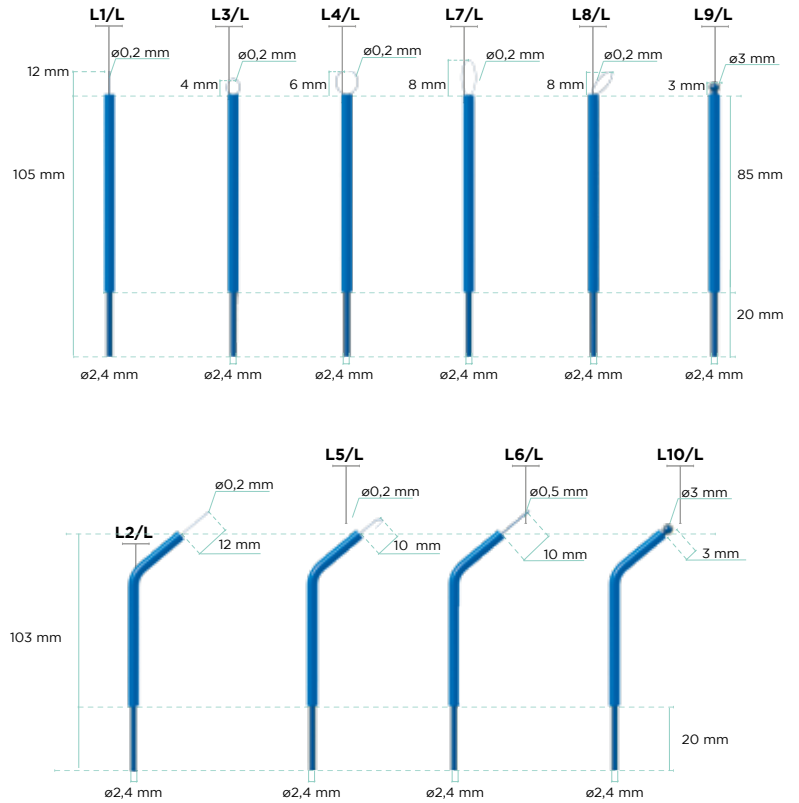
Compatibility 00205.00, 00206.00, 755VL

- + 50 D
- + 80 D
- + 80
- + 120
- + 160
- + 200
- + TOUCH 200
- + FLASH 120
- + FLASH 160
- + FLASH 200
- + 300 HP
- + 400 HP
- + SURTRON EVAC
- + SURTRON ABC
- + TOUCH HP 50D
- + TOUCH HP 80D
- + TOUCH HP 80
- + TOUCH HP 120
- + TOUCH HP 160
- + TOUCH HP 200
- + TOUCH HP 300
- + TOUCH HP 400
- + TOUCH HP EVAC



kit 00500.00/L: assorted pcs 10
from 00500.L1/L to 00500.L10/L

00500.00/L



Description

152-115 Blade Electrode 16 cm

- + 50 D
- + 80 D
- + 80
- + 120
- + 160
- + 200
- + TOUCH 200
- + FLASH 120
- + FLASH 160
- + FLASH 200
- + 300 HP
- + 400 HP
- + SURTRON EVAC
- + SURTRON ABC
- + TOUCH HP 50D
- + TOUCH HP 80D
- + TOUCH HP 80
- + TOUCH HP 120
- + TOUCH HP 160
- + TOUCH HP 200
- + TOUCH HP 300
- + TOUCH HP 400
- + TOUCH HP EVAC

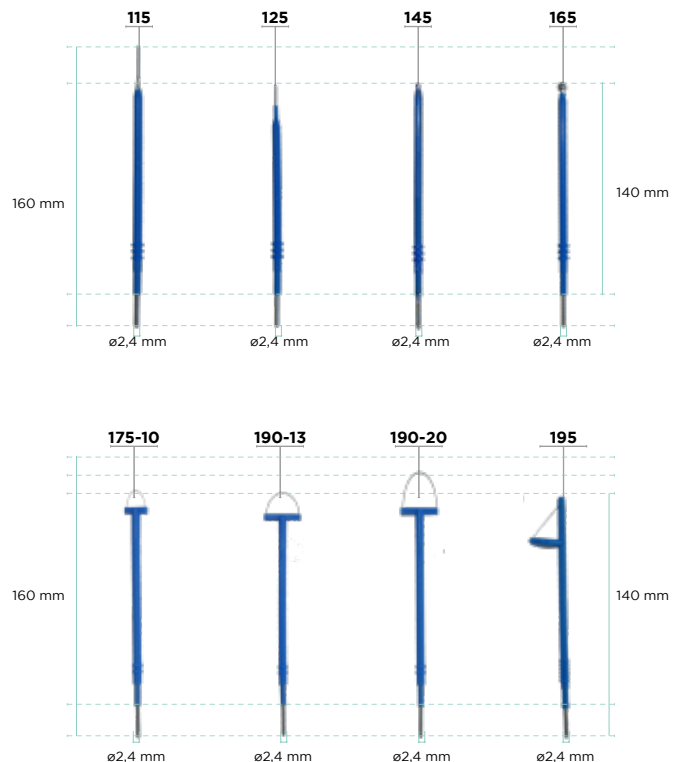
- 152-125 Needle Electrode 13 cm
- 152-145 Ball Electrode ø3mm 13 cm
- 152-175-10 Loop Electrode 10x10 l.14 cm
- 152-190-13 Loop Electrode 20x13 l.14 cm
- 152-190-20 Loop Electrode 20x20 l.15 cm
- 152-195 Conization Electrode 13 cm

- + 50 D
- + 80 D
- + 80
- + 120
- + 160
- + 200
- + TOUCH 200
- + FLASH 120
- + FLASH 160
- + FLASH 200
- + 300 HP
- + 400 HP
- + SURTRON EVAC
- + SURTRON ABC
- + TOUCH HP 50D
- + TOUCH HP 80D
- + TOUCH HP 80
- + TOUCH HP 120
- + TOUCH HP 160
- + TOUCH HP 200
- + TOUCH HP 300
- + TOUCH HP 400
- + TOUCH HP EVAC

152-165 Ball Electrode ø5mm 14 cm

- + 50 D
- + 80 D
- + 80
- + 120
- + 160
- + 200
- + TOUCH 200
- + FLASH 120
- + FLASH 160
- + FLASH 200
- + 300 HP
- + 400 HP
- + SURTRON EVAC
- + SURTRON ABC
- + TOUCH HP 50D
- + TOUCH HP 80D
- + TOUCH HP 80
- + TOUCH HP 120
- + TOUCH HP 160
- + TOUCH HP 200
- + TOUCH HP 300
- + TOUCH HP 400
- + TOUCH HP EVAC

152 Long



pcs: 1

Compatibility 00205.00, 00206.00, 755VL

00420.10



7,5 cm



Description Argon coagulation electrode 75mm
Weight 0,075 kg (0,16 lb)
Size 7,5 cm (2,9 in)
Sterilization Autoclavable
Sterilisation cycles 30

- x 50 D
- x 80 D
- x 80
- x 120
- x 160
- x 200
- x TOUCH 200
- x FLASH 120
- x FLASH 160 HF
- x FLASH 200
- x 300 HP
- x 400 HP
- x SURTRON EVAC
- + SURTRON ABC
- x TOUCH HP 50D
- x TOUCH HP 80D
- x TOUCH HP 80
- x TOUCH HP 120
- x TOUCH HP 160
- x TOUCH HP 200
- + TOUCH HP 300
- + TOUCH HP 400
- x TOUCH HP EVAC



pcs: 1

00420.12



15 cm



Description Argon coagulation electrode 150mm
Weight 0,15 kg (0,33 lb)
Size 15 cm (5,9 in)
Sterilization Autoclavable
Sterilisation cycles 30

- x 50 D
- x 80 D
- x 80
- x 120
- x 160
- x 200
- x TOUCH 200
- x FLASH 120
- x FLASH 160 HF
- x FLASH 200
- x 300 HP
- x 400 HP
- x SURTRON EVAC
- x SURTRON ABC
- 1 TOUCH HP 50D
- x TOUCH HP 80D
- x TOUCH HP 80
- x TOUCH HP 120
- x TOUCH HP 160
- x TOUCH HP 200
- + TOUCH HP 300
- + TOUCH HP 400
- x TOUCH HP EVAC



pcs: 1

00420.14



37 cm



Description Argon coagulation electrode 370mm
Weight 0,30 kg (0,66 lb)
Size 37 cm (14,5 in)
Sterilization Autoclavable
Sterilisation cycles 30

- x 50 D
- x 80 D
- x 80
- x 120
- x 160
- x 200
- x TOUCH 200
- x FLASH 120
- x FLASH 160 HF
- x FLASH 200
- x 300 HP
- x 400 HP
- x SURTRON EVAC
- x SURTRON ABC
- + TOUCH HP 50D
- x TOUCH HP 80D
- x TOUCH HP 80
- x TOUCH HP 120
- x TOUCH HP 160
- x TOUCH HP 200
- + TOUCH HP 300
- + TOUCH HP 400
- x TOUCH HP EVAC



pcs: 1

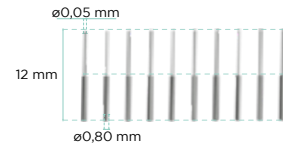
Description Needles for micro-surgery length 1cm
Weight 0,002 kg (0,004 lb)
Size 12x0,05x0,8 mm (0,47x0,002x0,03 in)
Sterilization STERILE
Sterilisation cycles NO

- + 50 D
- + 80 D
- + 80
- + 120
- + 160
- + 200
- + TOUCH 200
- FLASH 120
- FLASH 160 HF
- FLASH 200
- x 300 HP
- x 400 HP
- x SURTRON EVAC
- x SURTRON ABC
- + TOUCH HP 50D
- + TOUCH HP 80D
- + TOUCH HP 80
- + TOUCH HP 120
- + TOUCH HP 160
- + TOUCH HP 200
- x TOUCH HP 300
- x TOUCH HP 400
- x TOUCH HP EVAC



pcs: 10

500500.L11



STERILE EO

Description Electrodes and handle support
Size 8x8x5 cm (3,14x3,14x1,96 in)
Weight 0,02 kg (0,04 lb)
Color RAL7035 (Light Gray)

- 1 50 D
- 1 80 D
- 1 80
- 1 120
- 1 160
- 1 200
- 1 TOUCH 200
- FLASH 120
- FLASH 160 HF
- FLASH 200
- x 300 HP
- x 400 HP
- x SURTRON EVAC
- x SURTRON ABC
- + TOUCH HP 50D
- + TOUCH HP 80D
- + TOUCH HP 80
- + TOUCH HP 120
- + TOUCH HP 160
- + TOUCH HP 200
- x TOUCH HP 300
- x TOUCH HP 400
- x TOUCH HP EVAC



pcs: 1

00202.00



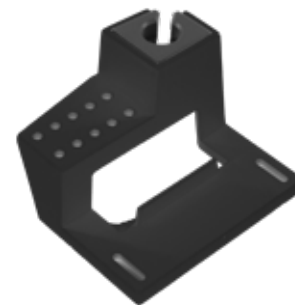
Description Electrodes and handle support
Size 8x8x5 cm (3,14x3,14x1,96 in)
Weight 0,02 kg (0,04 lb)
Color RAL9005 (Intense Black)

- + 50 D
- + 80 D
- + 80
- + 120
- + 160
- + 200
- + TOUCH 200
- + FLASH 120
- + FLASH 160 HF
- + FLASH 200
- x 300 HP
- x 400 HP
- x SURTRON EVAC
- x SURTRON ABC
- 1 TOUCH HP 50D
- 1 TOUCH HP 80D
- 1 TOUCH HP 80
- 1 TOUCH HP 120
- 1 TOUCH HP 160
- 1 TOUCH HP 200
- x TOUCH HP 300
- x TOUCH HP 400
- x TOUCH HP EVAC



pcs: 1

00202.00-9005





ADAP TERS

Description Bipolar adapter
Weight 0,03 kg (0,06 lb)
Size 4,5x1,5x7,5 cm (1,8x0,6x3 in)
Sterilization NO
Sterilization cycles NO
Compatibility 00414.00, 00418.00

x 50 D
 x 80 D
 + 80
 + 120
 + 160
 + 200
 x TOUCH 200
 x FLASH 120
 x FLASH 160 HF
 x FLASH 200
 x 300 HP
 x 400 HP
 x SURTRON EVAC
 x SURTRON ABC
 x TOUCH HP 50D
 x TOUCH HP 80D
 x TOUCH HP 80
 x TOUCH HP 120
 x TOUCH HP 160
 x TOUCH HP 200
 x TOUCH HP 300
 x TOUCH HP 400
 x TOUCH HP EVAC

00498.00



Description 2001 bipolar adapter selector (until 2009)
Weight 0,03 kg (0,06 lb)
Size 3x3x8,5 cm (1,2x1,2x3 in)
Sterilization NO
Sterilization cycles NO
Compatibility 00412.00

x 50 D
 x 80 D
 + 80
 + 120
 + 160
 + 200
 x TOUCH 200
 x FLASH 120
 x FLASH 160 HF
 x FLASH 200
 x 300 HP
 x 400 HP
 x SURTRON EVAC
 x SURTRON ABC
 x TOUCH HP 50D
 x TOUCH HP 80D
 x TOUCH HP 80
 x TOUCH HP 120
 x TOUCH HP 160
 x TOUCH HP 200
 x TOUCH HP 300
 x TOUCH HP 400
 x TOUCH HP EVAC

00498.04



Description Adapter for neutral electrode 6,3mm/Valley
Weight 0,015kg (0,03lb)
Size 2,2x2,2x7,2 cm (0,86x0,86x2,8 in)
Sterilization NO
Sterilization cycles NO
Compatibility 00404.10, 00404.11

+ 50 D
 + 80 D
 + 80
 + 120
 + 160
 + 200
 + TOUCH 200
 + FLASH 120
 + FLASH 160 HF
 + FLASH 200
 + 300 HP
 + 400 HP
 x SURTRON EVAC
 x SURTRON ABC
 x TOUCH HP 50D
 x TOUCH HP 80D
 x TOUCH HP 80
 x TOUCH HP 120
 x TOUCH HP 160
 x TOUCH HP 200
 x TOUCH HP 300
 x TOUCH HP 400
 x TOUCH HP EVAC

00498.06



Description Bipolar adapter EUR/2xM2,5
Weight 0,015 kg (0,03 lb)
Size 2,2x2,2x7,2 cm (0,86x0,86x2,8 in)
Sterilization NO
Sterilization cycles NO

x 50 D
 x 80 D
 + 80
 + 120
 + 160
 + 200
 + TOUCH 200
 + FLASH 120
 + FLASH 160 HF
 + FLASH 200
 + 300 HP
 + 400 HP
 x SURTRON EVAC
 x SURTRON ABC
 x TOUCH HP 50D
 x TOUCH HP 80D
 x TOUCH HP 80
 x TOUCH HP 120
 x TOUCH HP 160
 x TOUCH HP 200
 x TOUCH HP 300
 x TOUCH HP 400
 x TOUCH HP EVAC

00498.08



Description Bipolar adapter EUR/3xM4
Weight 0,015 kg (0,03 lb)
Size 2,2x2,2x7,2 cm (0,86x0,86x2,8 in)
Sterilization NO
Sterilization cycles NO

x 50 D
 x 80 D
 + 80
 + 120
 + 160
 + 200
 + TOUCH 200
 + FLASH 120
 + FLASH 160 HF
 + FLASH 200
 + 300 HP
 + 400 HP
 x SURTRON EVAC
 x SURTRON ABC
 x TOUCH HP 50D
 x TOUCH HP 80D
 x TOUCH HP 80
 x TOUCH HP 120
 x TOUCH HP 160
 x TOUCH HP 200
 x TOUCH HP 300
 x TOUCH HP 400
 x TOUCH HP EVAC

00498.10





**BI
PO
LAR**

**MO
NO
PO
LAR**

Description US Bi-Turbinate Electrode
Size 18,5x2x2 cm (7,3x0,78x78 in)
Weight 0,07 kg (0,154 lb)
Tip Thickness 0.8 mm (0,0314 in)
Sterilization Autoclavable
Sterilization cycles 30
Compatibility 00414.00



pcs: 1

x 50 D
 x 80 D
 x 80
 x 120
 x 160
 x 200
 + TOUCH 200
 x FLASH 120
 + FLASH 160 HF
 x FLASH 200
 + 300 HP
 x 400 HP
 x SURTRON EVAC
 x SURTRON ABC
 x TOUCH HP 50D
 x TOUCH HP 80D
 x TOUCH HP 80
 x TOUCH HP 120
 x TOUCH HP 160
 x TOUCH HP 200
 x TOUCH HP 300
 x TOUCH HP 400
 x TOUCH HP EVAC

110-700



Description Bipolar Forceps Artery Sealer
Size 27 cm (10,62 in)
Weight 0,1 kg (0,22 lb)
Sterilization Autoclavable
Sterilization cycles 30
Tip thickness 3 mm
Compatibility 00413.00



pcs: 1

x 50 D
 x 80 D
 x 80
 x 120
 x 160
 x 200
 + TOUCH 200
 x FLASH 120
 x FLASH 160 HF
 x FLASH 200
 + 300 HP
 x 400 HP
 x SURTRON EVAC
 x SURTRON ABC
 x TOUCH HP 50D
 x TOUCH HP 80D
 x TOUCH HP 80
 x TOUCH HP 120
 x TOUCH HP 160
 x TOUCH HP 200
 + TOUCH HP 300
 + TOUCH HP 400
 x TOUCH HP EVAC

110-750NS



27 cm



Description Bipolar Forceps Artery Sealer
Size 25,5 cm (10 in)
Sterilization Autoclavable
Sterilization cycles 30
Tip thickness 3mm
Compatibility 00413.00



pcs: 1

x 50 D
 x 80 D
 x 80
 x 120
 x 160
 x 200
 + TOUCH 200
 x FLASH 120
 x FLASH 160 HF
 x FLASH 200
 + 300 HP
 x 400 HP
 x SURTRON EVAC
 x SURTRON ABC
 x TOUCH HP 50D
 x TOUCH HP 80D
 x TOUCH HP 80
 x TOUCH HP 120
 x TOUCH HP 160
 x TOUCH HP 200
 + TOUCH HP 300
 + TOUCH HP 400
 x TOUCH HP EVAC

110-755NS



25,5 cm



Description Bipolar Forceps Artery Sealer
Size 17 cm (6,7in)
Sterilization Autoclavable
Sterilization cycles 30
Tip thickness 2 mm
Compatibility 00413.00



pcs: 1

x 50 D
 x 80 D
 x 80
 x 120
 x 160
 x 200
 + TOUCH 200
 x FLASH 120
 x FLASH 160 HF
 x FLASH 200
 + 300 HP
 x 400 HP
 x SURTRON EVAC
 x SURTRON ABC
 x TOUCH HP 50D
 x TOUCH HP 80D
 x TOUCH HP 80
 x TOUCH HP 120
 x TOUCH HP 160
 x TOUCH HP 200
 + TOUCH HP 300
 + TOUCH HP 400
 x TOUCH HP EVAC

110-760NS



17 cm



310-110-05



11,5 cm



Tip Shape



Description Bipolar Forceps 11,5cm
Weight 0,03 kg (0,6lb)
Length 11,5 cm (4,52 in)
Tip thickness 0,5 mm (0,019in)
Sterilization Autoclavable
Sterilization cycles 30
Compatibility 00411.00, 00412.00



pcs: 1

- x 50 D
- x 80 D
- + 80
- + 120
- + 160
- + 200
- + TOUCH 200
- + FLASH 120
- + FLASH 160 HF
- + FLASH 200
- + 300 HP
- + 400 HP
- x SURTRON EVAC
- x SURTRON ABC
- x TOUCH HP 50D
- x TOUCH HP 80D
- + TOUCH HP 80
- + TOUCH HP 120
- + TOUCH HP 160
- + TOUCH HP 200
- + TOUCH HP 300
- + TOUCH HP 400
- x TOUCH HP EVAC

310-112-05



11,5 mm



Tip Shape



Description Curved Bipolar Forceps
Weight 0,03 kg (0,6lb)
Length 11,5 cm (4,52 in)
Tip thickness 0,5 mm (0,019in)
Sterilization Autoclavable
Sterilization cycles 30
Compatibility 00411.00, 00412.00



pcs: 1

- x 50 D
- x 80 D
- + 80
- + 120
- + 160
- + 200
- + TOUCH 200
- + FLASH 120
- + FLASH 160 HF
- + FLASH 200
- + 300 HP
- + 400 HP
- x SURTRON EVAC
- x SURTRON ABC
- x TOUCH HP 50D
- x TOUCH HP 80D
- + TOUCH HP 80
- + TOUCH HP 120
- + TOUCH HP 160
- + TOUCH HP 200
- + TOUCH HP 300
- + TOUCH HP 400
- x TOUCH HP EVAC

310-140-10



20 cm



Tip Shape



Description Bipolar Forceps
Weight 0,03 kg (0,6lb)
Length 20 cm (7,87in)
Tip thickness 1 mm (0,039in)
Sterilization Autoclavable
Sterilization cycles 30
Compatibility 00411.00, 00412.00



pcs: 1

- x 50 D
- x 80 D
- + 80
- + 120
- + 160
- + 200
- + TOUCH 200
- + FLASH 120
- + FLASH 160 HF
- + FLASH 200
- + 300 HP
- + 400 HP
- x SURTRON EVAC
- x SURTRON ABC
- x TOUCH HP 50D
- x TOUCH HP 80D
- + TOUCH HP 80
- + TOUCH HP 120
- + TOUCH HP 160
- + TOUCH HP 200
- + TOUCH HP 300
- + TOUCH HP 400
- x TOUCH HP EVAC

310-140-20



20 cm



Tip Shape



Description Bipolar Forceps
Weight 0,03 kg (0,6lb)
Length 20 cm (7,87 in)
Tip thickness 2 mm (0,078 in)
Sterilization Autoclavable
Sterilization cycles 30
Compatibility 00411.00, 00412.00



pcs: 1

- x 50 D
- x 80 D
- + 80
- + 120
- + 160
- + 200
- + TOUCH 200
- + FLASH 120
- + FLASH 160 HF
- + FLASH 200
- + 300 HP
- + 400 HP
- x SURTRON EVAC
- x SURTRON ABC
- x TOUCH HP 50D
- x TOUCH HP 80D
- + TOUCH HP 80
- + TOUCH HP 120
- + TOUCH HP 160
- + TOUCH HP 200
- + TOUCH HP 300
- + TOUCH HP 400
- x TOUCH HP EVAC

Description Curved Bipolar Forceps
Weight 0,03Kg (0,6lb)
Length 20 cm (7,87 in)
Tip thickness 1 mm (0,039 in)
Sterilization Autoclavable
Sterilization cycles 30
Compatibility 00411.00, 00412.00



pcs: 1

- x 50 D
- x 80 D
- + 80
- + 120
- + 160
- + 200
- + TOUCH 200
- + FLASH 120
- + FLASH 160 HF
- + FLASH 200
- + 300 HP
- + 400 HP
- x SURTRON EVAC
- x SURTRON ABC
- x TOUCH HP 50D
- x TOUCH HP 80D
- x TOUCH HP 80
- x TOUCH HP 120
- x TOUCH HP 160
- x TOUCH HP 200
- x TOUCH HP 300
- x TOUCH HP 400
- x TOUCH HP EVAC



20 cm



Description Curved Bipolar Forceps
Weight 0,03 Kg (0,6 lb)
Length 20 cm (7,87 in)
Tip thickness 2 mm (0,078 in)
Sterilization Autoclavable
Sterilization cycles 30
Compatibility 00411.00, 00412.00



pcs: 1

- x 50 D
- x 80 D
- + 80
- + 120
- + 160
- + 200
- + TOUCH 200
- + FLASH 120
- + FLASH 160 HF
- + FLASH 200
- + 300 HP
- + 400 HP
- x SURTRON EVAC
- x SURTRON ABC
- x TOUCH HP 50D
- x TOUCH HP 80D
- x TOUCH HP 80
- x TOUCH HP 120
- x TOUCH HP 160
- x TOUCH HP 200
- x TOUCH HP 300
- x TOUCH HP 400
- x TOUCH HP EVAC



20 cm



Description Angled Bipolar Forceps
Weight 0,03 kg (0,6 lb)
Length 20 cm (7,87in)
Tip thickness 3 mm (0,11 in)
Sterilization Autoclavable
Sterilization cycles 30
Compatibility 00411.00, 00412.00



pcs: 1

- x 50 D
- x 80 D
- + 80
- + 120
- + 160
- + 200
- + TOUCH 200
- + FLASH 120
- + FLASH 160 HF
- + FLASH 200
- + 300 HP
- + 400 HP
- x SURTRON EVAC
- x SURTRON ABC
- x TOUCH HP 50D
- x TOUCH HP 80D
- x TOUCH HP 80
- x TOUCH HP 120
- x TOUCH HP 160
- x TOUCH HP 200
- x TOUCH HP 300
- x TOUCH HP 400
- x TOUCH HP EVAC



20 cm



Description Angled Bipolar Forceps
Weight 0,03 kg (0,6 lb)
Length 17 cm (0,07 in)
Tip thickness 2 mm (0,07 in)
Sterilization Autoclavable
Sterilization cycles 30
Compatibility 00411.00, 00412.00



pcs: 1

- x 50 D
- x 80 D
- + 80
- + 120
- + 160
- + 200
- + TOUCH 200
- + FLASH 120
- + FLASH 160 HF
- + FLASH 200
- + 300 HP
- + 400 HP
- x SURTRON EVAC
- x SURTRON ABC
- x TOUCH HP 50D
- x TOUCH HP 80D
- x TOUCH HP 80
- x TOUCH HP 120
- x TOUCH HP 160
- x TOUCH HP 200
- x TOUCH HP 300
- x TOUCH HP 400
- x TOUCH HP EVAC



17 cm



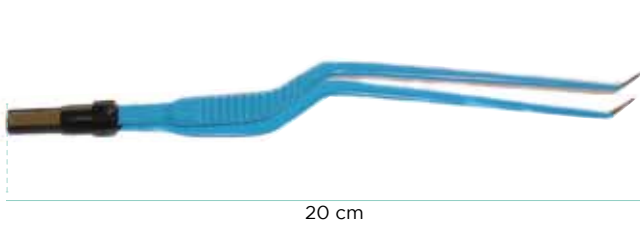
310-142-10

310-142-20

310-180-10

310-180-20

310-182-10



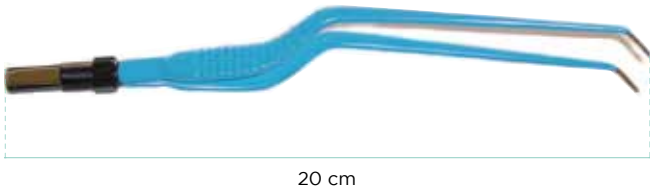
Description Angled Curved Bipolar Forceps
Weight 0,03 kg (0,6 lb)
Length 20 cm (7,87 lb)
Tip thickness 1 mm (0,039 in)
Sterilization Autoclavable
Sterilisation cycles 30
Compatibility 00411.00, 00412.00



pcs: 1

x 50 D
 x 80 D
 + 80
 + 120
 + 160
 + 200
 + TOUCH 200
 + FLASH 120
 + FLASH 160 HF
 + FLASH 200
 + 300 HP
 + 400 HP
 x SURTRON EVAC
 x SURTRON ABC
 x TOUCH HP 50D
 x TOUCH HP 80D
 + TOUCH HP 80
 + TOUCH HP 120
 + TOUCH HP 160
 + TOUCH HP 200
 + TOUCH HP 300
 + TOUCH HP 400
 x TOUCH HP EVAC

310-185-10



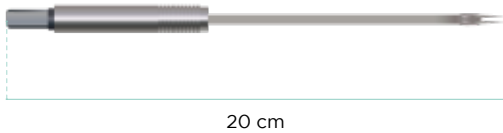
Description Angled Curved Bipolar Forceps
Weight 0,03 kg (0,6lb)
Length 20 cm (7,87 lb)
Tip thickness 1 mm (0,039in)
Sterilization Autoclavable
Sterilization cycles 30
Compatibility 00411.00, 00412.00



pcs: 1

x 50 D
 x 80 D
 + 80
 + 120
 + 160
 + 200
 + TOUCH 200
 + FLASH 120
 + FLASH 160 HF
 + FLASH 200
 + 300 HP
 + 400 HP
 x SURTRON EVAC
 x SURTRON ABC
 x TOUCH HP 50D
 x TOUCH HP 80D
 + TOUCH HP 80
 + TOUCH HP 120
 + TOUCH HP 160
 + TOUCH HP 200
 + TOUCH HP 300
 + TOUCH HP 400
 x TOUCH HP EVAC

310-510



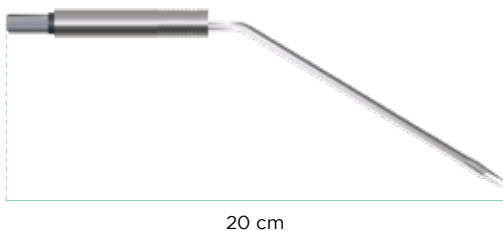
Description Bipolar Electrode
Weight 0,03 kg (0,6 lb)
Length 20 cm (7,87 lb)
Tip thickness 0,7 mm (0,0275 in)
Sterilization Autoclavable
Sterilization cycles 30
Compatibility 00411.00, 00412.00



pcs: 1

x 50 D
 x 80 D
 + 80
 + 120
 + 160
 + 200
 + TOUCH 200
 + FLASH 120
 + FLASH 160 HF
 + FLASH 200
 + 300 HP
 + 400 HP
 x SURTRON EVAC
 x SURTRON ABC
 x TOUCH HP 50D
 x TOUCH HP 80D
 + TOUCH HP 80
 + TOUCH HP 120
 + TOUCH HP 160
 + TOUCH HP 200
 + TOUCH HP 300
 + TOUCH HP 400
 x TOUCH HP EVAC

310-550



Description Bipolar Electrode
Weight 0,03 kg (0,06lb)
Length 20 cm (7,87lb)
Tip thickness 0,7 mm (0,0275 in)
Sterilization Autoclavable
Sterilization cycles 30
Compatibility 00411.00, 00412.00



pcs: 1

x 50 D
 x 80 D
 + 80
 + 120
 + 160
 + 200
 + TOUCH 200
 + FLASH 120
 + FLASH 160 HF
 + FLASH 200
 + 300 HP
 + 400 HP
 x SURTRON EVAC
 x SURTRON ABC
 x TOUCH HP 50D
 x TOUCH HP 80D
 + TOUCH HP 80
 + TOUCH HP 120
 + TOUCH HP 160
 + TOUCH HP 200
 + TOUCH HP 300
 + TOUCH HP 400
 x TOUCH HP EVAC

Description Bipolar Scissors 20 cm - curved 2
Weight 0,03 Kg (0,6 lb)
Length 18 cm (7 lb)
Tip thickness 0,7 mm (0,0275 in)
Sterilization Autoclavable
Sterilisation cycles 30
Compatibility 00411.00, 00412.00



pcs: 1

- x 50 D
- x 80 D
- x 80
- + 120
- + 160
- + 200
- + TOUCH 200
- + FLASH 120
- + FLASH 160 HF
- + FLASH 200
- + 300 HP
- + 400 HP
- x SURTRON EVAC
- x SURTRON ABC
- x TOUCH HP 50D
- x TOUCH HP 80D
- + TOUCH HP 80
- + TOUCH HP 120
- + TOUCH HP 160
- + TOUCH HP 200
- + TOUCH HP 300
- x TOUCH HP 400
- x TOUCH HP EVAC

310-590



18 cm

Tip Shape



Description Bipolar Clamp Scissors
Weight 0,05 kg (0,1 lb)
Length 15 cm (5,9 lb)
Tip thickness 0,5 mm (0,02 in)
Sterilization Autoclavable
Sterilization cycles 30
Compatibility 00418.00



pcs: 1

- x 50 D
- x 80 D
- x 80
- x 120
- x 160
- x 200
- + TOUCH 200
- x FLASH 120
- x FLASH 160 HF
- x FLASH 200
- + 300 HP
- + 400 HP
- x SURTRON EVAC
- x SURTRON ABC
- x TOUCH HP 50D
- x TOUCH HP 80D
- x TOUCH HP 80
- x TOUCH HP 120
- x TOUCH HP 160
- + TOUCH HP 200
- + TOUCH HP 300
- + TOUCH HP 400
- x TOUCH HP EVAC

410-100-15



15 cm

Tip Shape



Description Bipolar Clamp Scissors
Weight 0,05 kg (0,1 lb)
Length 19 cm (7,5 lb)
Tip thickness 0,5 mm (0,02 in)
Sterilization Autoclavable
Sterilization cycles 30
Compatibility 00418.00



pcs: 1

- x 50 D
- x 80 D
- x 80
- x 120
- x 160
- x 200
- + TOUCH 200
- x FLASH 120
- x FLASH 160 HF
- x FLASH 200
- + 300 HP
- + 400 HP
- x SURTRON EVAC
- x SURTRON ABC
- x TOUCH HP 50D
- x TOUCH HP 80D
- x TOUCH HP 80
- x TOUCH HP 120
- x TOUCH HP 160
- + TOUCH HP 200
- + TOUCH HP 300
- + TOUCH HP 400
- x TOUCH HP EVAC

410-100-19



19 cm

Tip Shape



Description Bipolar Scissors
Weight 0,05 kg (0,11 lb)
Length 18 cm (7,0 lb)
Tip thickness 2 mm (0,078 in)
Sterilization Autoclavable
Sterilization cycles 30
Compatibility 00418.00



pcs: 1

- x 50 D
- x 80 D
- x 80
- x 120
- x 160
- x 200
- + TOUCH 200
- x FLASH 120
- x FLASH 160 HF
- x FLASH 200
- + 300 HP
- + 400 HP
- x SURTRON EVAC
- x SURTRON ABC
- x TOUCH HP 50D
- x TOUCH HP 80D
- x TOUCH HP 80
- x TOUCH HP 120
- x TOUCH HP 160
- + TOUCH HP 200
- + TOUCH HP 300
- + TOUCH HP 400
- x TOUCH HP EVAC

410-200-18

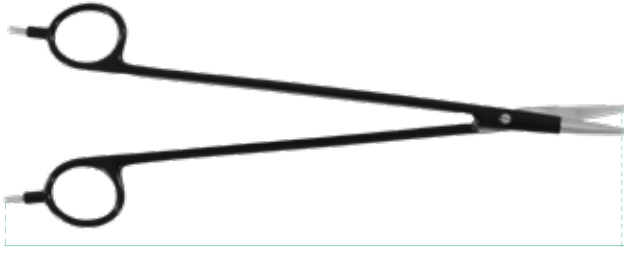


18 cm

Tip Shape



410-200-21



21 cm



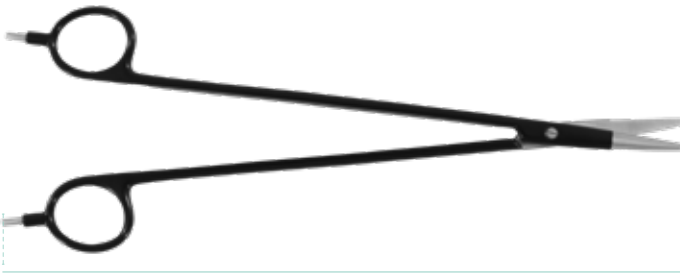
Description Bipolar Scissors
Weight 0,05 kg (0,11 lb)
Length 21 cm (7,0 lb)
Tip thickness 2 mm (0,078 in)
Sterilization Autoclavable
Sterilisation cycles 30
Compatibility 00418.00



pcs: 1

x 50 D
 x 80 D
 x 80
 x 120
 x 160
 x 200
 + TOUCH 200
 x FLASH 120
 x FLASH 160 HF
 x FLASH 200
 + 300 HP
 + 400 HP
 x SURTRON EVAC
 x SURTRON ABC
 x TOUCH HP 50D
 x TOUCH HP 80D
 x TOUCH HP 80
 x TOUCH HP 120
 x TOUCH HP 160
 x TOUCH HP 200
 x TOUCH HP 300
 x TOUCH HP 400
 x TOUCH HP EVAC

410-200-23



23 cm



Description Bipolar Scissors
Weight 0,05 kg (0,11 lb)
Length 23 cm (7,0 lb)
Tip thickness 2 mm (0,078 in)
Sterilization Autoclavable
Sterilisation cycles 30
Compatibility 00418.00



pcs: 1

x 50 D
 x 80 D
 x 80
 x 120
 x 160
 x 200
 + TOUCH 200
 x FLASH 120
 x FLASH 160 HF
 x FLASH 200
 + 300 HP
 + 400 HP
 x SURTRON EVAC
 x SURTRON ABC
 x TOUCH HP 50D
 x TOUCH HP 80D
 x TOUCH HP 80
 x TOUCH HP 120
 x TOUCH HP 160
 x TOUCH HP 200
 x TOUCH HP 300
 x TOUCH HP 400
 x TOUCH HP EVAC

330-160



18 cm



Description Monopolar Scissors 21cm
Weight 0,05Kg (0,11lb)
Length 18 cm (7,0 lb)
Cutter length 45 mm (1,7 in)
Sterilization Autoclavable
Sterilisation cycles 30
Compatibility 0040202



pcs: 1

x 50 D
 x 80 D
 x 80
 + 120
 + 160
 + 200
 + TOUCH 200
 + FLASH 120
 + FLASH 160 HF
 + FLASH 200
 + 300 HP
 + 400 HP
 x SURTRON EVAC
 x SURTRON ABC
 x TOUCH HP 50D
 x TOUCH HP 80D
 + TOUCH HP 80
 + TOUCH HP 120
 + TOUCH HP 160
 + TOUCH HP 200
 + TOUCH HP 300
 + TOUCH HP 400
 x TOUCH HP EVAC

330-134-20



21 cm



Description Monopolar Surgical Forceps
Weight 0,05 kg (0,11 lb)
Length 21 cm (8,2 lb)
Tip thickness 2 mm (0,078 in)
Sterilization Autoclavable
Sterilisation cycles 30
Compatibility 0040202



pcs: 1

x 50 D
 + 80 D
 + 80
 + 120
 + 160
 + 200
 + TOUCH 200
 + FLASH 120
 + FLASH 160 HF
 + FLASH 200
 + 300 HP
 + 400 HP
 x SURTRON EVAC
 x SURTRON ABC
 + TOUCH HP 50D
 + TOUCH HP 80D
 + TOUCH HP 80
 + TOUCH HP 120
 + TOUCH HP 160
 + TOUCH HP 200
 + TOUCH HP 300
 + TOUCH HP 400
 x TOUCH HP EVAC



EVA CUA TION KIT

00900.01/12



STERILE EO 

Description Handle evacuation kit for surgical smoke evacuato
Pipe Diameter ø22 cm (3,93 in)
Pipe Length 18,5 cm (7,2 in)
Weight 0,05 kg (0,11 lb)
Sterilization NO
Sterilisation cycles NO

 pcs: 12

x 50 D
 x 80 D
 x 80
 x 120
 x 160
 x 200
 x TOUCH 200
 x FLASH 120
 x FLASH 160 HF
 x FLASH 200
 x 300 HP
 x 400 HP
 + SURTRON EVAC
 x SURTRON ABC
 x TOUCH HP 50D
 x TOUCH HP 80D
 x TOUCH HP 80
 x TOUCH HP 120
 x TOUCH HP 160
 x TOUCH HP 200
 x TOUCH HP 300
 x TOUCH HP 400
 + TOUCH HP EVAC

00900.02/06





Description Evacuation kit for surgical smoke evacuator
Pipe Diameter ø22 cm (0,86 in)
Pipe Length 240 cm (94,48 in)
Weight 0,05 kg (0,11 lb)
Sterilization NO
Sterilisation cycles NO
Compatibility 00900.01/12, 00900.05, 00900.07, 00900.08/12,

 pcs: 6

x 50 D
 x 80 D
 x 80
 x 120
 x 160
 x 200
 x TOUCH 200
 x FLASH 120
 x FLASH 160 HF
 x FLASH 200
 x 300 HP
 x 400 HP
 + SURTRON EVAC
 x SURTRON ABC
 x TOUCH HP 50D
 x TOUCH HP 80D
 x TOUCH HP 80
 x TOUCH HP 120
 x TOUCH HP 160
 x TOUCH HP 200
 x TOUCH HP 300
 x TOUCH HP 400
 + TOUCH HP EVAC

00900.04



134°C  

Description Autoclavable evacuation tube D.22
Pipe Diameter ø7 mm (0,27 in)
Pipe Length 2,40 m (94,5 in)
Weight 0,05 kg (0,11 lb)
Sterilization Autoclavable
Sterilisation cycles 100
Compatibility 00900.01/12, 00900.05, 00900.06/06, 00900.07, 00900.08/12

 pcs: 1

x 50 D
 x 80 D
 x 80
 x 120
 x 160
 x 200
 x TOUCH 200
 x FLASH 120
 x FLASH 160 HF
 x FLASH 200
 x 300 HP
 x 400 HP
 + SURTRON EVAC
 x SURTRON ABC
 x TOUCH HP 50D
 x TOUCH HP 80D
 x TOUCH HP 80
 x TOUCH HP 120
 x TOUCH HP 160
 x TOUCH HP 200
 x TOUCH HP 300
 x TOUCH HP 400
 + TOUCH HP EVAC

Description Autoclavable evacuation tube D.22
Pipe Diameter ø7 mm (0,27 in)
Pipe Length 2,40 m (94,5 in)
Weight 0,05 kg (0,11lb)
Sterilization Autoclavable
Sterilisation cycles 100
Compatibility 00900.02, 00900.04



50 D x
 80 D x
 80 x
 120 x
 160 x
 200 x
 TOUCH 200 x
 FLASH 120 x
 FLASH 160 HF x
 FLASH 200 x
 300 HP x
 400 HP x
 + SURTRON EVAC
 SURTRON ABC x
 TOUCH HP 50D x
 TOUCH HP 80D x
 TOUCH HP 80 x
 TOUCH HP 120 x
 TOUCH HP 160 x
 TOUCH HP 200 x
 TOUCH HP 300 x
 TOUCH HP 400 x
 + TOUCH HP EVAC

00900.05



Description Bacterial/Viral Filter D.22
Pipe Diameter ø22 mm (0,867 in)
Connection Diameter ø15 mm (0,59 in)
Sterilization NO
Sterilisation cycles NO
Compatibility 00900.04, 00900.02/06, 00900.FU01/10



50 D x
 80 D x
 80 x
 120 x
 160 x
 200 x
 TOUCH 200 x
 FLASH 120 x
 FLASH 160 HF x
 FLASH 200 x
 300 HP x
 400 HP x
 + SURTRON EVAC
 SURTRON ABC x
 TOUCH HP 50D x
 TOUCH HP 80D x
 TOUCH HP 80 x
 TOUCH HP 120 x
 TOUCH HP 160 x
 TOUCH HP 200 x
 TOUCH HP 300 x
 TOUCH HP 400 x
 + TOUCH HP EVAC

00900.06/06



Description Autoclavable handle evacuation kit
Pipe Diameter ø22 cm (0,86 in)
Pipe Length 150 cm (59 in)
Weight 0,05 kg (0,11 lb)
Sterilization Autoclavable
Sterilisation cycles 30
Compatibility 755VL, 00205.00/40, 00206.00/40, 00900.02/06, 00900.04



50 D x
 80 D x
 80 x
 120 x
 160 x
 200 x
 TOUCH 200 x
 FLASH 120 x
 FLASH 160 HF x
 FLASH 200 x
 300 HP x
 400 HP x
 + SURTRON EVAC
 SURTRON ABC x
 TOUCH HP 50D x
 TOUCH HP 80D x
 TOUCH HP 80 x
 TOUCH HP 120 x
 TOUCH HP 160 x
 TOUCH HP 200 x
 TOUCH HP 300 x
 TOUCH HP 400 x
 + TOUCH HP EVAC

00900.07



00900.08/12



LUER LOCK

STERILE EO



Description	Evacuation kit for TROCAR Luer Lock
Pipe Diameter	ø22 mm (0,86 in)
Pipe Length	240 cm (94,48 in)
Weight	0,05 kg (0,11 lb)
Sterilization	NO
Sterilisation cycles	NO
Compatibility	00900.02, 00900.04



pcs: 12

50 D	TOUCH 200	+ SURTRON EVAC
x	FLASH 120	x SURTRON ABC
x	FLASH 160 HF	x TOUCH HP 50D
x	FLASH 200	x TOUCH HP 80D
x	300 HP	x TOUCH HP 80
x	400 HP	x TOUCH HP 120
+ SURTRON EVAC		x TOUCH HP 160
x SURTRON ABC		x TOUCH HP 200
x TOUCH HP 50D		x TOUCH HP 300
x TOUCH HP 80D		x TOUCH HP 400
x TOUCH HP 80		+ TOUCH HP EVAC
x TOUCH HP 120		
x TOUCH HP 160		
x TOUCH HP 200		
x TOUCH HP 300		
x TOUCH HP 400		
+ TOUCH HP EVAC		

00900.FU01/10*



Description	ULPA Filter for SURTRON EVAC - red
Filter Diameter	22 mm 7/8" (0,867 in)
Particles diameter	0,12 micron
Filter Type	ULPA with active carbon
Filter efficiency	99,999X %
Filter duration	00900.FST/10: 5 hours
Filter duration	00900.FU01/10: 20 hours



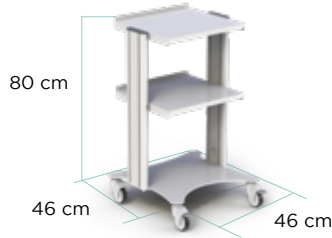
pcs: 12

50 D	TOUCH 200	+ SURTRON EVAC
x	FLASH 120	x SURTRON ABC
x	FLASH 160 HF	x TOUCH HP 50D
x	FLASH 200	x TOUCH HP 80D
x	300 HP	x TOUCH HP 80
x	400 HP	x TOUCH HP 120
+ SURTRON EVAC		x TOUCH HP 160
x SURTRON ABC		x TOUCH HP 200
x TOUCH HP 50D		x TOUCH HP 300
x TOUCH HP 80D		x TOUCH HP 400
x TOUCH HP 80		+ TOUCH HP EVAC
x TOUCH HP 120		
x TOUCH HP 160		
x TOUCH HP 200		
x TOUCH HP 300		
x TOUCH HP 400		
+ TOUCH HP EVAC		



TROLLEY

TRO03

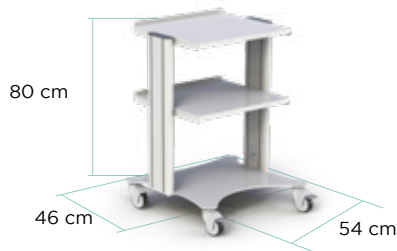


Description Trolley 3 shelves
Size WxHxD 80x46x46 cm (31x18,1x18,1 in)
Weight 18 kg (34,47 lb)
Shelf size 43x36 cm (16,9x14,17 in)
Color RAL7035 (Light Grey)
Frame Material Trolley made of aluminum with adjustable shelves made with steel, covered with a coat of paint.
Wheel type 80 mm wheels diameter, anterior wheels whit block system.

- + 50 D
- + 80 D
- + 80
- + 120
- + 160
- + 200
- + TOUCH 200
- + FLASH 120
- + FLASH 160 HF
- + FLASH 200
- x 300 HP
- x 400 HP
- x SURTRON EVAC
- x SURTRON ABC
- + TOUCH HP 50D
- + TOUCH HP 80D
- + TOUCH HP 80
- + TOUCH HP 120
- + TOUCH HP 160
- + TOUCH HP 200
- + TOUCH HP 300
- + TOUCH HP 400
- x TOUCH HP EVAC



TRO03W



Description Trolley 3 shelves
Size WxHxD 80x54x46 cm (31x21,2x18,1 in)
Weight 18,5 kg (34,47 lb)
shelf size 40x40 cm (15,7x15,74 in)
Color RAL7035 (Light Grey)
Frame Material Trolley made of aluminum with adjustable shelves made with steel, covered with a coat of paint.
Wheel type 80 mm wheels diameter, anterior wheels, whit block system.

- + 50 D
- + 80 D
- + 80
- + 120
- + 160
- + 200
- + TOUCH 200
- + FLASH 120
- + FLASH 160 HF
- + FLASH 200
- + 300 HP
- + 400 HP
- + SURTRON EVAC
- + SURTRON ABC
- + TOUCH HP 50D
- + TOUCH HP 80D
- + TOUCH HP 80
- + TOUCH HP 120
- + TOUCH HP 160
- + TOUCH HP 200
- + TOUCH HP 300
- + TOUCH HP 400
- x TOUCH HP EVAC



TRO04



Description Trolley 4 shelves
Size WxHxD 90x46x46 cm (35,43x18,1x18,1 in)
Weight 20 kg (39,6 lb)
Shelf size 40x36 cm (15,7x14,17 in)
Color RAL7035 (Light Grey)
Frame Material Trolley made of aluminum with adjustable shelves made with steel, covered with a coat of paint.
Wheel type 80 mm wheels diameter, anterior wheels whit block system.

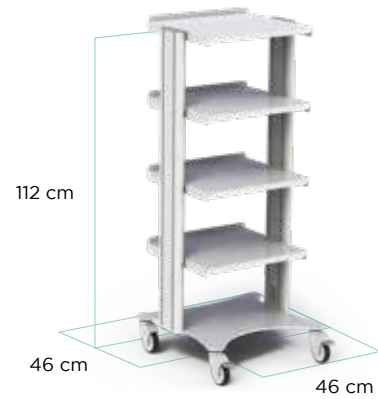
- + 50 D
- + 80 D
- + 80
- + 120
- + 160
- + 200
- + TOUCH 200
- + FLASH 120
- + FLASH 160 HF
- + FLASH 200
- x 300 HP
- x 400 HP
- x SURTRON EVAC
- x SURTRON ABC
- + TOUCH HP 50D
- + TOUCH HP 80D
- + TOUCH HP 80
- + TOUCH HP 120
- + TOUCH HP 160
- + TOUCH HP 200
- + TOUCH HP 300
- + TOUCH HP 400
- x TOUCH HP EVAC



TR005

Description Trolley 5 shelvees
Size WxHxD 112x46x46 cm (44x18,1x18,1 in)
Weight 19 kg (41,9 lb)
Shelf size 43x36 cm (16,9x14,17 in)
Color RAL7035 (Light Grey)
Frame Material Trolley made of aluminum with adjustable shelves made with steel, covered with a coat of paint.
Wheel type 80 mm wheels diameter, anterior wheels whit block system.

- + 50 D
- + 80 D
- + 80
- + 120
- + 160
- + 200
- + TOUCH 200
- + FLASH 120
- + FLASH 160 HF
- + FLASH 200
- x 300 HP
- x 400 HP
- + SURTRON EVAC
- x SURTRON ABC
- + TOUCH HP 50D
- + TOUCH HP 80D
- + TOUCH HP 80
- + TOUCH HP 120
- + TOUCH HP 160
- + TOUCH HP 200
- + TOUCH HP 300
- + TOUCH HP 400
- x TOUCH HP EVAC



Description Trolley 5 shelvees
Size WxHxD 112x46x54 cm (44x18,1x21,2 in)
Weight 24,5 kg (54 lb)
Shelf size 43x36 cm (16,9x14,17 in)
Color RAL7035 (Light Grey)
Frame Material Trolley made of aluminum with adjustable shelves made with steel, covered with a coat of paint.
Wheel type 80 mm wheels diameter, anterior wheels whit block system.

- + 50 D
- + 80 D
- + 80
- + 120
- + 160
- + 200
- + TOUCH 200
- + FLASH 120
- + FLASH 160 HF
- + FLASH 200
- + 300 HP
- + 400 HP
- + SURTRON EVAC
- + SURTRON ABC
- + TOUCH HP 50D
- + TOUCH HP 80D
- + TOUCH HP 80
- + TOUCH HP 120
- + TOUCH HP 160
- + TOUCH HP 200
- + TOUCH HP 300
- + TOUCH HP 400
- x TOUCH HP EVAC



TR005W

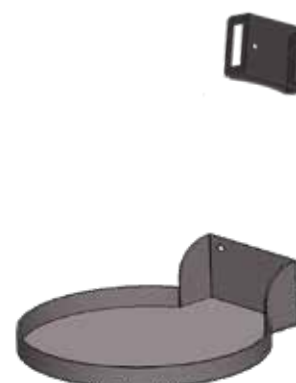


Description Support for Cylinder
Size WxHxD 18x6x20 cm (7x2,3x7,87 in)
Weight 0,5 kg (1,1 lb)
Color RAL7016 (Anthracite Gray)
Frame Material Shelves made with steel, covered with a coat of paint.

- x 50 D
- x 80 D
- x 80
- x 120
- x 160
- x 200
- x TOUCH 200
- x FLASH 120
- x FLASH 160 HF
- x FLASH 200
- x 300 HP
- x 400 HP
- x SURTRON EVAC
- + SURTRON ABC
- x TOUCH HP 50D
- x TOUCH HP 80D
- x TOUCH HP 80
- x TOUCH HP 120
- x TOUCH HP 160
- x TOUCH HP 200
- x TOUCH HP 300
- + TOUCH HP 400
- x TOUCH HP EVAC



TRCYLSUP01



TRDRAWER01



Description
Size WxHxD

Drawer for trolley type TR
38,5x10x28,7 cm (15x3,9x11,3 in)

- + 50 D
- + 80 D
- + 80
- + 120
- + 160
- + 200
- + TOUCH 200
- + FLASH 120
- + FLASH 160 HF
- + FLASH 200
- + 300 HP
- + 400 HP
- + SURTRON EVAC
- + SURTRON ABC
- + TOUCH HP 50D
- + TOUCH HP 80D
- + TOUCH HP 80
- + TOUCH HP 120
- + TOUCH HP 160
- + TOUCH HP 200
- + TOUCH HP 300
- + TOUCH HP 400
- + TOUCH HP EVAC



pcs: 1

TRDRAWER01W



Description
Size WxHxD

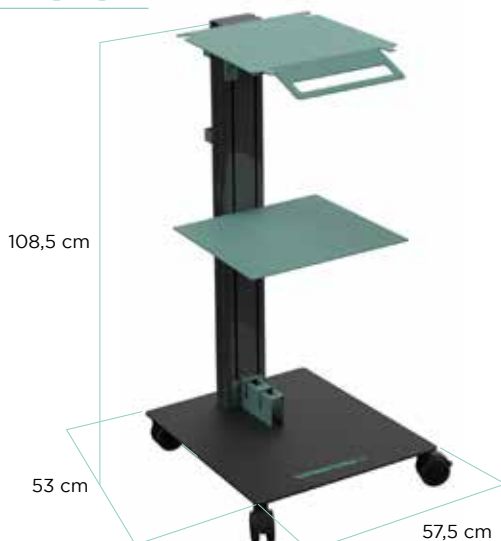
Drawer for trolley type TR W
38,5x10x28,7 cm (15x3,9x11,3 in)

- + 50 D
- + 80 D
- + 80
- + 120
- + 160
- + 200
- + TOUCH 200
- + FLASH 120
- + FLASH 160 HF
- + FLASH 200
- + 300 HP
- + 400 HP
- + SURTRON EVAC
- + SURTRON ABC
- + TOUCH HP 50D
- + TOUCH HP 80D
- + TOUCH HP 80
- + TOUCH HP 120
- + TOUCH HP 160
- + TOUCH HP 200
- + TOUCH HP 300
- + TOUCH HP 400
- + TOUCH HP EVAC



pcs: 1

TRST001



Description
Size WxHxD

SURTRON TOUCH HP 300/400 Trolley
53x108,5x57,5 cm (20x42,7x22,6 in)

Weight
shelf size

33 Kg (72,75lb)
43,5x10x38 mm (17,x3,9x15 in)

Color

RAL7016 (Anthracite gray)
RAL6027 (Light Green)
RAL9005 (Intense Black)

Frame Material

Trolley with column made of aluminum with adjustable shelves made with steel, covered with a coat of paint.

Wheel type

80 mm wheels diameter, anterior wheels whit block system.

- + 50 D
- + 80 D
- + 80
- + 120
- + 160
- + 200
- + TOUCH 200
- + FLASH 120
- + FLASH 160 HF
- + FLASH 200
- + 300 HP
- + 400 HP
- + SURTRON EVAC
- + SURTRON ABC
- + TOUCH HP 50D
- + TOUCH HP 80D
- + TOUCH HP 80
- + TOUCH HP 120
- + TOUCH HP 160
- + TOUCH HP 200
- + TOUCH HP 300
- + TOUCH HP 400
- + TOUCH HP EVAC



pcs: 1

WxHxD: 100x60x18 cm Weight: 33 kg

Description SURTRON TOUCH HP 200 Trolley
Size WxHxD 53x108,5x57,5 cm (20x42,7x22,6 in)
Weight 33 Kg (72,75lb)
shelf size 43,5x10x38 mm (17,x3,9x15 in)
Color RAL7016 (Anthracite gray)
 RAL6027 (Light Green)
 RAL9005 (Intense Black)

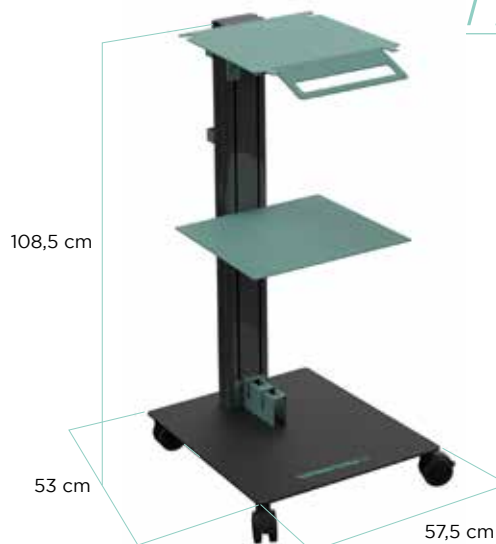
Frame Material Trolley with column made of aluminum with adjustable shelves made with steel, covered with a coat of paint.

Wheel type 80 mm wheels diameter, anterior wheels whit block system.

x 50 D
 x 80 D
 x 80
 x 120
 x 160
 x 200
 x TOUCH 200
 x FLASH 120
 x FLASH 160 HF
 x FLASH 200
 x 300 HP
 x 400 HP
 x SURTRON EVAC
 x SURTRON ABC
 x TOUCH HP 50D
 x TOUCH HP 80D
 x TOUCH HP 80
 x TOUCH HP 120
 x TOUCH HP 160
 x TOUCH HP 200
 x TOUCH HP 300
 x TOUCH HP 400
 x TOUCH HP EVAC

 pcs: 1
 WxHxD: 100x60x18 cm Weight: 33 kg

TRST002



Description SURTRON TOUCH HP80/120/160 Trolley
Size WxHxD 53x108,5x57,5 cm (20x42,7x22,6 in)
Weight 33 Kg (72,75lb)
shelf size 43,5x10x38 mm (17,x3,9x15 in)
Color RAL7016 (Anthracite gray)
 RAL6027 (Light Green)
 RAL9005 (Intense Black)

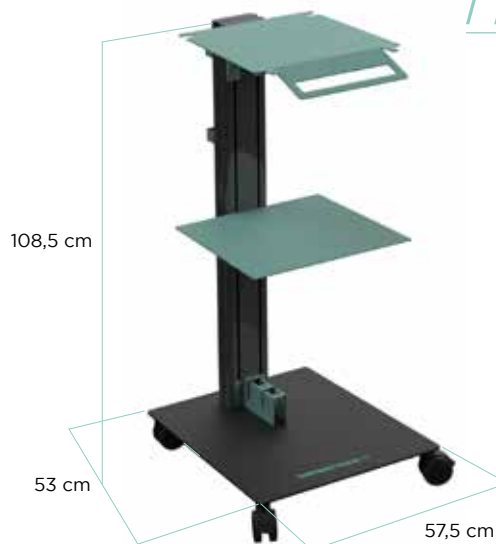
Frame Material Trolley with column made of aluminum with adjustable shelves made with steel, covered with a coat of paint.

Wheel type 80 mm wheels diameter, anterior wheels whit block system.

x 50 D
 x 80 D
 x 80
 x 120
 x 160
 x 200
 x TOUCH 200
 x FLASH 120
 x FLASH 160 HF
 x FLASH 200
 x 300 HP
 x 400 HP
 x SURTRON EVAC
 x SURTRON ABC
 x TOUCH HP 50D
 x TOUCH HP 80D
 x TOUCH HP 80
 x TOUCH HP 120
 x TOUCH HP 160
 x TOUCH HP 200
 x TOUCH HP 300
 x TOUCH HP 400
 x TOUCH HP EVAC

 pcs: 1
 WxHxD: 100x60x18 cm Weight: 33 kg

TRST003



Description Shelf for SURTRON TOUCH HP EVAC
Size WxHxD 37x14x43 cm (14,5x5,5x16,9 in)
Weight 5 kg (11 lb)
Color RAL6027 (Light Green)
Frame Material Baket made with steel, covered with a coat of paint.

x 50 D
 x 80 D
 x 80
 x 120
 x 160
 x 200
 x TOUCH 200
 x FLASH 120
 x FLASH 160 HF
 x FLASH 200
 x 300 HP
 x 400 HP
 x SURTRON EVAC
 x SURTRON ABC
 x TOUCH HP 50D
 x TOUCH HP 80D
 x TOUCH HP 80
 x TOUCH HP 120
 x TOUCH HP 160
 x TOUCH HP 200
 x TOUCH HP 300
 x TOUCH HP 400
 x TOUCH HP EVAC

 pcs: 1

7211A



6959A



Description Shelf for SURTRON TOUCH HP 300 and TOUCH HP 400 Trolley

Size WxHxD 39x14x46 cm (15,35x5,5x18,1 in)

Weight 5,4 Kg (11,9 lb)

Color RAL6027 (Light Green)

- x 50 D
- x 80 D
- x 80
- x 120
- x 160
- x 200
- x TOUCH 200
- x FLASH 120
- x FLASH 160 HF
- x FLASH 200
- x 300 HP
- x 400 HP
- x SURTRON EVAC
- x SURTRON ABC
- x TOUCH HP 50D
- x TOUCH HP 80D
- x TOUCH HP 80
- x TOUCH HP 120
- x TOUCH HP 160
- x TOUCH HP 200
- + TOUCH HP 300
- + TOUCH HP 400
- x TOUCH HP EVAC



pcs: 1

6992A



Description Shelf for SURTRON TOUCH HP 200

Size WxHxD 34x14x38 cm (13,38x5,5x14,9 in)

Weight 4,4 Kg (9,7 lb)

Color RAL6027 (Light Green)

- x 50 D
- x 80 D
- x 80
- x 120
- x 160
- x 200
- x TOUCH 200
- x FLASH 120
- x FLASH 160 HF
- x FLASH 200
- x 300 HP
- x 400 HP
- x SURTRON EVAC
- x SURTRON ABC
- x TOUCH HP 50D
- x TOUCH HP 80D
- x TOUCH HP 80
- x TOUCH HP 120
- x TOUCH HP 160
- + TOUCH HP 200
- + TOUCH HP 300
- x TOUCH HP 400
- x TOUCH HP EVAC



pcs: 1

7277A



Description Shelf for SURTRON TOUCH HP 80/120/160 Trolley

Size WxHxD 25x14x27 cm (9,8x5,5x10,6 in)

Weight 3,4 Kg (6,6 lb)

Color RAL6027 (Light Green)

- x 50 D
- x 80 D
- x 80
- x 120
- x 160
- x 200
- x TOUCH 200
- x FLASH 120
- x FLASH 160 HF
- x FLASH 200
- x 300 HP
- x 400 HP
- x SURTRON EVAC
- x SURTRON ABC
- x TOUCH HP 50D
- x TOUCH HP 80D
- + TOUCH HP 80
- + TOUCH HP 120
- + TOUCH HP 160
- x TOUCH HP 200
- x TOUCH HP 300
- x TOUCH HP 400
- x TOUCH HP EVAC



pcs: 1

Description
Size WxHxD
Weight
Color
Frame Material

Basket for ST Trolley
 43,5x10x38 mm (17,x3,9x15 in)
 3,2 kg (7 lb)
 RAL9005 (Intense Black)
 Basket made with steel,
 covered with a coat of paint.

- x 50 D
- x 80 D
- x 80
- x 120
- x 160
- x 200
- x TOUCH 200
- x FLASH 120
- x FLASH 160 HF
- x FLASH 200
- x 300 HP
- x 400 HP
- x SURTRON EVAC
- x SURTRON ABC
- x TOUCH HP 50D
- x TOUCH HP 80D
- x TOUCH HP 80
- x TOUCH HP 120
- x TOUCH HP 160
- x TOUCH HP 200
- x TOUCH HP 300
- x TOUCH HP 400
- + TOUCH HP EVAC



pcs: 1

TRSTB01



Description
Size WxHxD
Weight
Color
Frame Material

Support section for ST Trolley
 43,5x13,5x38 cm (17x5,3x15 in)
 5,75Kg (2,26lb)
 RAL6027 (Light Green)
 Holder made with steel, covered
 with a coat of paint.

- x 50 D
- x 80 D
- x 80
- x 120
- x 160
- x 200
- x TOUCH 200
- x FLASH 120
- x FLASH 160 HF
- x FLASH 200
- x 300 HP
- x 400 HP
- x SURTRON EVAC
- x SURTRON ABC
- x TOUCH HP 50D
- x TOUCH HP 80D
- x TOUCH HP 80
- x TOUCH HP 120
- x TOUCH HP 160
- x TOUCH HP 200
- x TOUCH HP 300
- x TOUCH HP 400
- + TOUCH HP EVAC



pcs: 1

TRSTP01



Description
Size WxHxD
Weight
Color
Frame Material

Basket for ST Trolley
 14,5x30x19,3 cm (5,7x11,8x7,6 in)
 2,4 Kg (5,29 lb)
 RAL6027 (Light Green)
 Basket holder applicable to the
 Surtron Touch HP Trolley made with
 steel, covered with a coat of paint.

- x 50 D
- x 80 D
- x 80
- x 120
- x 160
- x 200
- x TOUCH 200
- x FLASH 120
- x FLASH 160 HF
- x FLASH 200
- x 300 HP
- x 400 HP
- x SURTRON EVAC
- x SURTRON ABC
- x TOUCH HP 50D
- x TOUCH HP 80D
- x TOUCH HP 80
- x TOUCH HP 120
- x TOUCH HP 160
- x TOUCH HP 200
- x TOUCH HP 300
- x TOUCH HP 400
- x TOUCH HP EVAC



pcs: 1

TRSTCS1







Manufacturing site
LED SpA
 via Selciatella, 40
 04011 Aprilia (LT) Italy

W led.it
M info@led.it
P +39 06 92870045

Legal site
LED SpA
 via Marco Tullio Cicerone, 138
 03100 Frosinone (FR) Italy