

**Imagine...** simple with faster performance

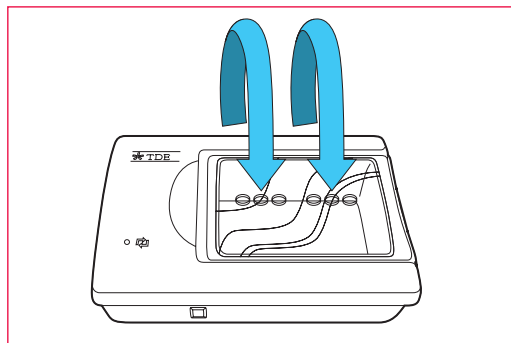
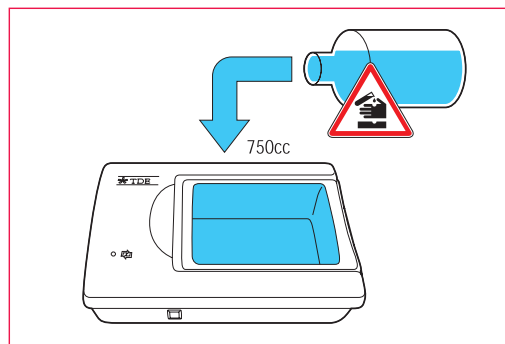


 **TDE™ 30**  
SAKURA   
Decalcifier System

## Decalcifier System

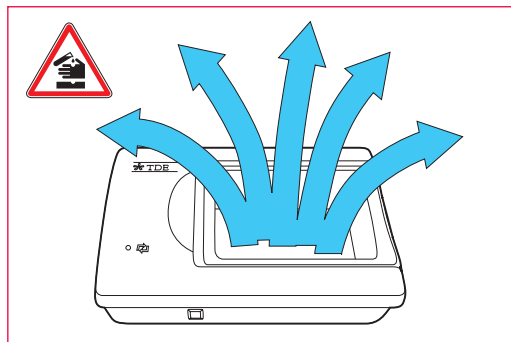
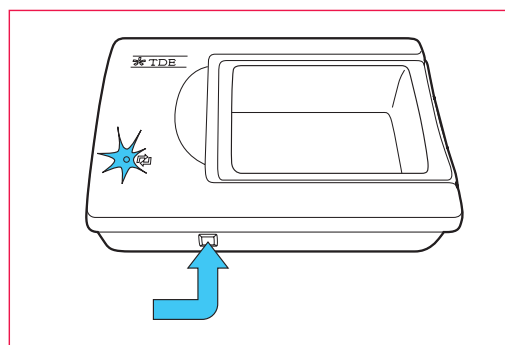
The SAKURA TDE™ 30 Decalcifier System is based on a simple electrolytic principle that, in combination with the TDE™ 30 Reagent, decalcifies bones. After decalcification by the SAKURA TDE™ 30, bones can be sectioned more easily. By using this technique the duration of the decalcification process is reduced by 60%, which is three times faster than classical techniques (for example, a femur bone section can be processed in just 15 minutes).

1. Pour approximately 750 mL of the SAKURA TDE™ 30 Decalcifier Solution (Item Code 1428) in the solution reservoir.



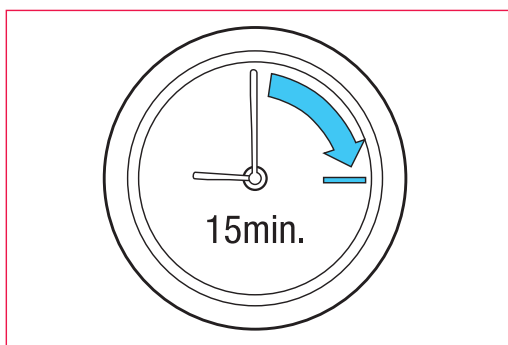
2. Place the cassettes with the tissue in the centre of the tray, close the lid and place the electrodes (Item Code 1460) in the holes of the lid as close to the cassettes as possible. Cassettes must be placed between the two electrodes.

3. Connect the unit to the main supply and switch the unit on.



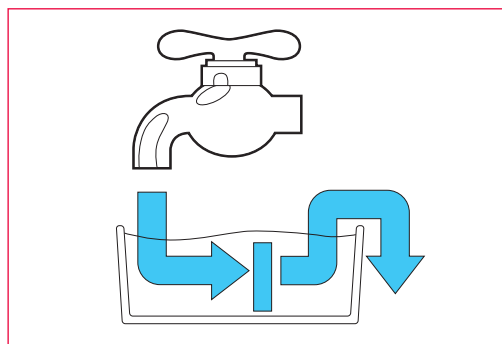
4. The electrolysis will produce vapours which will be irritating to the eyes and nose.

Ensure that the procedure is carried out under a fume hood resistant to corrosive fumes.



6. Rinse the biopsies with running water and place them in the fixative for further exterior treatment.

5. Wait approximately 15 minutes for the biopsies to float. If the biopsies do not float verify the decalcification with a needle or a knife or use an identification method.



## Decalcification of Bone

We recommend to use the following fixatives:

- Formaldehyde
- Bouin
- Dubosq Brazil

The method for fixation is identical to the one used for the biopsies.

- Place the electrodes as close as possible to the bone
- Depending on the size of the bone and mineralisation, the duration of the decalcification process can be between 30 minutes and 3 days

The time compared to a standard decalcification using a standard decalcifier, is reduced by 60 to 70 %.

Therefore the normal decalcification time can be divided by three.

Test the decalcification with a needle, knife or identification method. If the decalcification process takes longer than 12 hours, please change the SAKURA TDE™ 30 Decalcifier Solution as after prolonged use it becomes ineffective.

It is still possible to cut and inspect the bone that has been left in the unit overnight.

**Warnings:** The instrument should be placed in a corrosive resistant fume hood. Do never place a metal object in the tray.

## Dedicated to Histopathology

Sakura Finetek improves the laboratory by offering the most reliable products in the market. The histotechnologists can conveniently complete their activities in a safe environment. As the market leader in histopathology, Sakura Finetek is continuously looking for possibilities to improve the laboratory and succeeds in offering solutions for the problems found in the histopathology laboratory.



## Product Specifications

<b>Capacity</b>	Up to 30 cassettes
<b>Dimensions</b>	
W x D x H Bench	System 30 x 21 x 11 cm Solution Reservoir 16 x 12.5 x 6 cm
<b>Weight</b>	3 kg
<b>Solution Volume</b>	Up to 750mL

Item Code	Product Description	Unit of Sale
1427	TDE™ 30 Decalcifier 220V, 50Hz	2 x 1
1428	Reagent TDE™ 30 Decalcifier	6 x 1 liter
1460	Electrodes TDE™ 30 Decalcifier	2 x 1

**First we understand.**  
**Then we innovate.**

**Tissue-Tek® Distributor:**



**Sakura Finetek Europe B.V.**  
The Netherlands  
Phone: +31 71 589 83 00  
Fax: +31 71 589 84 88  
Sakura@sakura.eu  
www.sakura.eu