



---

## Accessories and Consumables

CATALOGUE

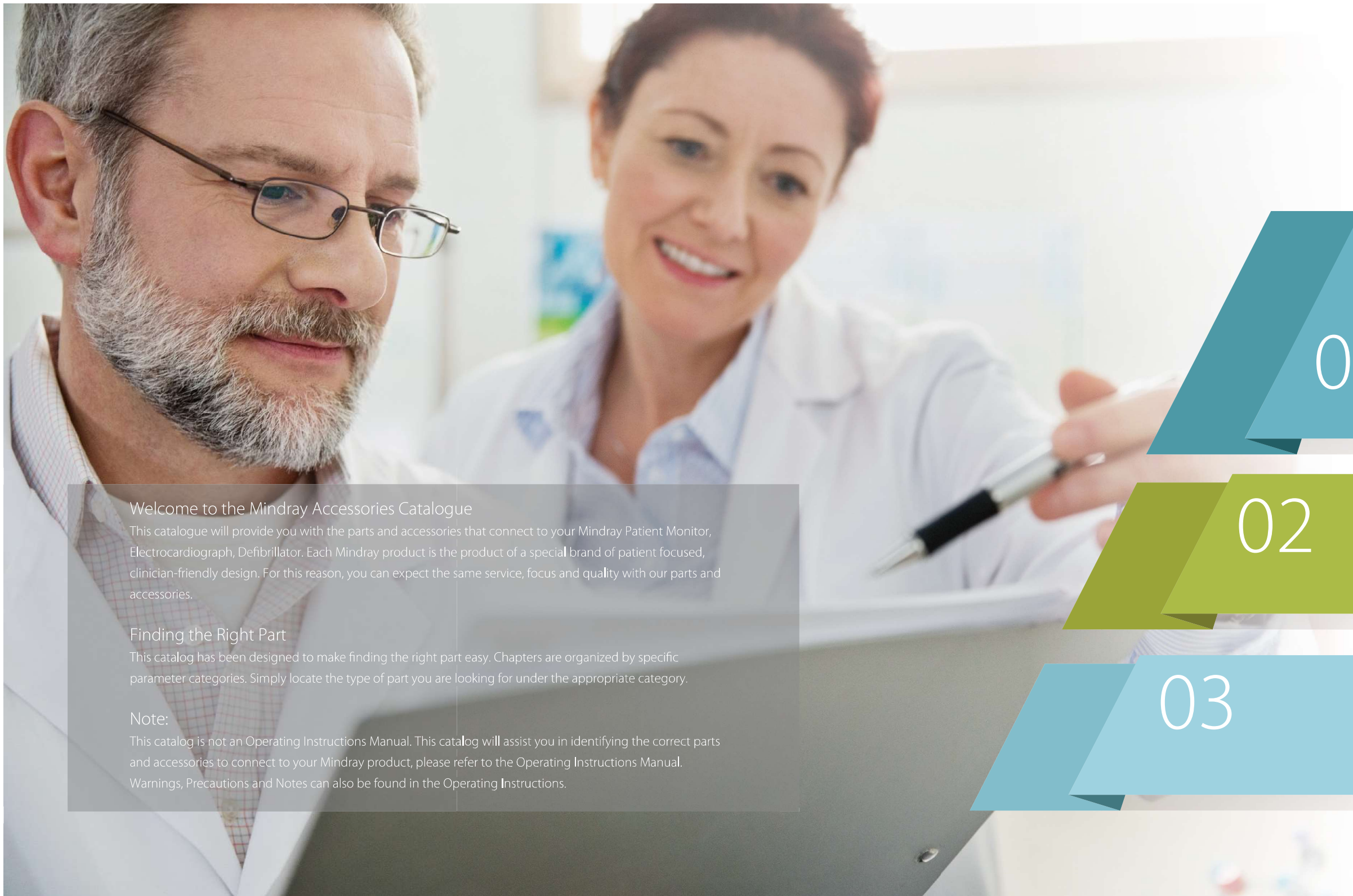
2024.07

---

[www.mindray.com](http://www.mindray.com)

P/N:ENG-Accessories and Consumables Catalogue-210210X160P-20240717  
©2024 Shenzhen Mindray Bio-Medical Electronics Co.,Ltd. All rights reserved.





### Welcome to the Mindray Accessories Catalogue

This catalogue will provide you with the parts and accessories that connect to your Mindray Patient Monitor, Electrocardiograph, Defibrillator. Each Mindray product is the product of a special brand of patient focused, clinician-friendly design. For this reason, you can expect the same service, focus and quality with our parts and accessories.

### Finding the Right Part

This catalog has been designed to make finding the right part easy. Chapters are organized by specific parameter categories. Simply locate the type of part you are looking for under the appropriate category.

### Note:

This catalog is not an Operating Instructions Manual. This catalog will assist you in identifying the correct parts and accessories to connect to your Mindray product, please refer to the Operating Instructions Manual. Warnings, Precautions and Notes can also be found in the Operating Instructions.

## Patient Monitor Accessories

|                        |     |
|------------------------|-----|
| ECG                    | 2   |
| SpO <sub>2</sub>       | 22  |
| NIBP                   | 36  |
| mWear                  | 52  |
| TEMP                   | 56  |
| CO <sub>2</sub>        | 67  |
| AG                     | 82  |
| IBP                    | 86  |
| RM                     | 91  |
| C.O.                   | 94  |
| ICG                    | 98  |
| BIS                    | 99  |
| ESI                    | 100 |
| PICCO <sub>2</sub>     | 102 |
| CCO                    | 106 |
| aEEG                   | 107 |
| ANI                    | 111 |
| NMT                    | 112 |
| rSO <sub>2</sub>       | 115 |
| Mounting               | 116 |
| Rolling stands         | 127 |
| Others                 | 129 |
| Accessories Management | 132 |
| Barcode Scanner        | 133 |

01

02

## Defibrillator Accessories

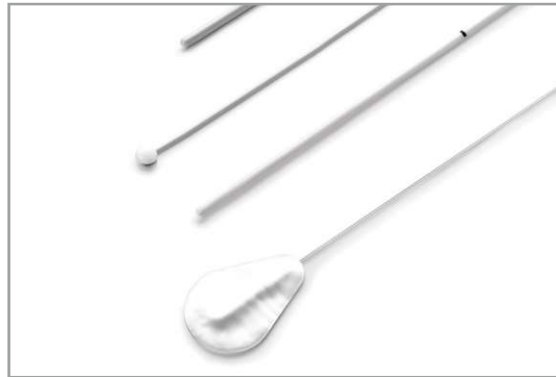
134

03

## Electrocardiograph Accessories

154





## Temperature Accessories



### Reusable Temperature Probes

- Available in Rectal/Esophageal and Skin Surface Styles
- Flexible and durable cables
- Outstanding cable material, enduring repeated cleaning and disinfection
- Latex free
- Good biocompatibility, avoiding allergic reactions to patient

For BeneVision, ePM, uMEC, series monitors, BeneHeart defibrillator

| Picture   | Model  | Part No.      | No. Description   | Purchasing Unit |
|---|--------|---------------|---|-----------------|
|    | MR401B | 0011-30-37392 | Reusable Temp Probe, Adu, Esophageal/Rectal, 2 Pin, 3 m     | Each            |
|    | MR402B | 0011-30-37394 | Reusable Temp Probe, Ped/Neo, Esophageal/Rectal, 2 Pin, 3 m | Each            |
|  | MR403B | 0011-30-37393 | Reusable Temp Probe, Adu, Skin, 2 Pin, 3.6 m                | Each            |
|  | MR404B | 0011-30-37395 | Reusable Temp Probe, Ped/Neo, Skin, 2 Pin, 3.6 m            | Each            |