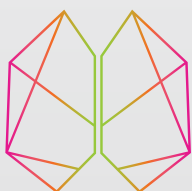




**DESIGNED TO REMOVE TOUGH
CLOTS FOR SUCCESSFUL
REVASCULARIZATION**



CERENOVUS

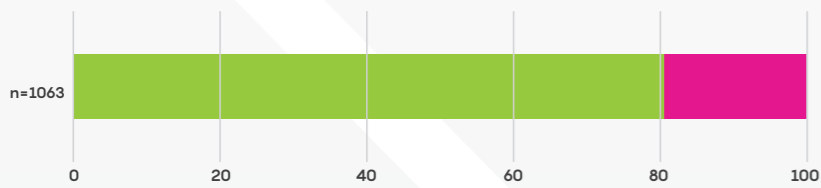
PART OF THE *Johnson & Johnson* FAMILY OF COMPANIES

**CERENOVUS
NIMBUS™**
geometric clot extractor

CERENOVUS NIMBUS™

geometric clot extractor

Almost 20% Of Thrombectomies Fail To Revascularize The Vessel Within 3 Retrieval Attempts^{a,1-4}



^a Revascularization rates of the ARISE II, ASTER, COMPASS and 3D Separator clinical trials

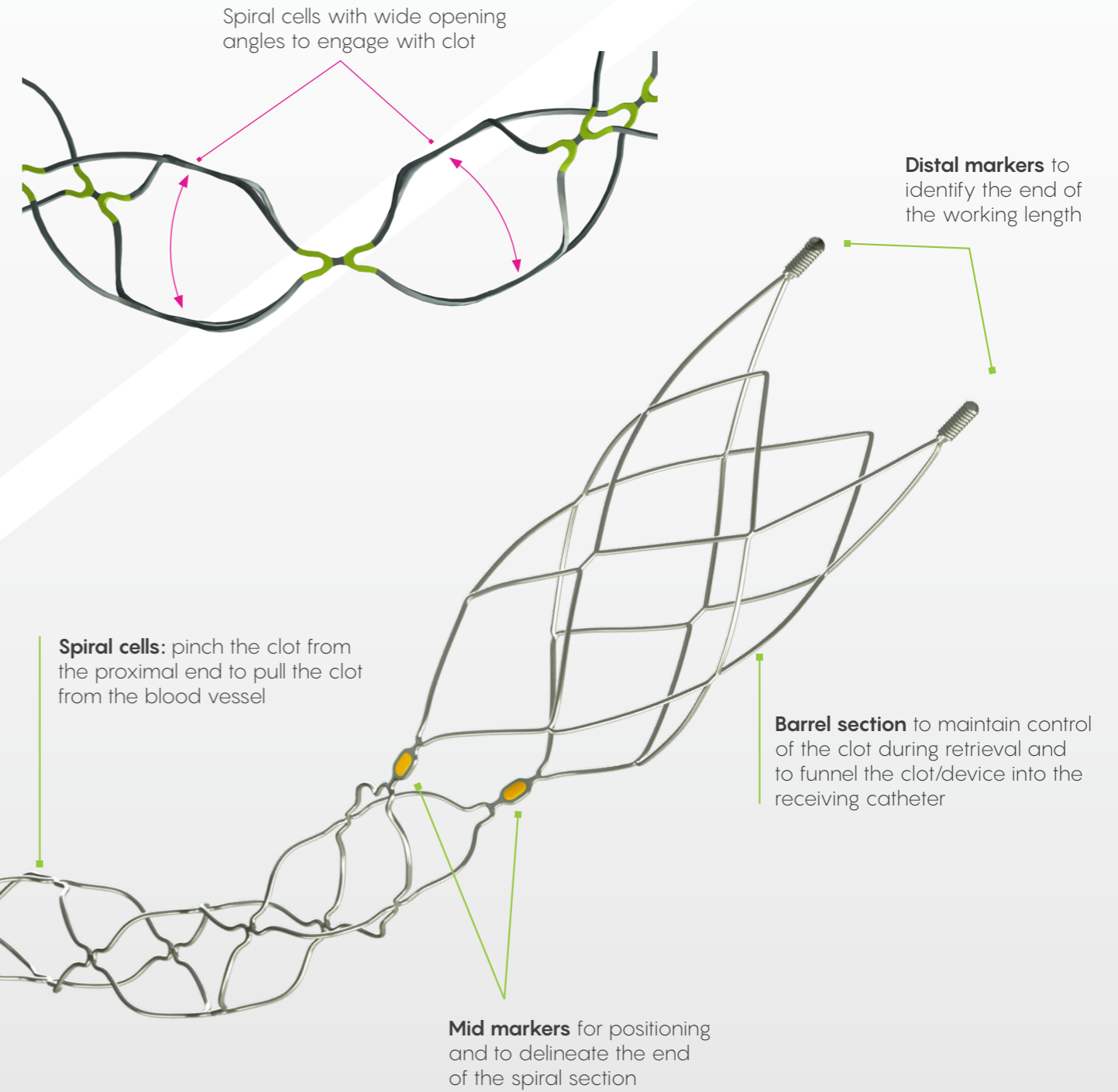


Tough clot properties:

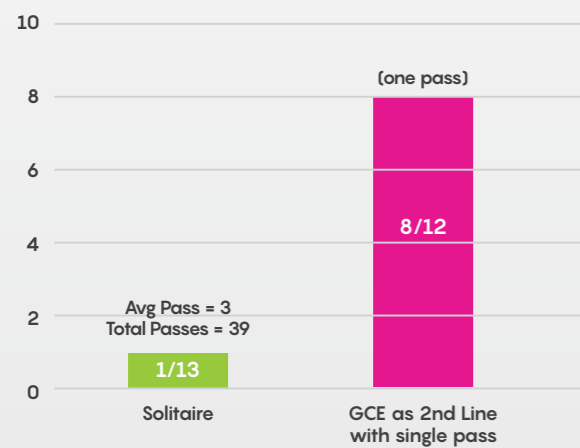
- Difficult to grip with traditional stent retrievers
- Difficult to aspirate
- Stick to blood vessel wall increasing retrieval difficulty

Pinch-pull technology:

- CERENOVUS NIMBUS has spiral cells with multiple pinch points to pull out tough clot



CERENOVUS NIMBUS™ exceeds Solitaire™ performance for tough clot removal



What to do about fibrin rich "tough clots"? Comparing the Solitaire™ stent retriever with a novel geometric clot extractor in an in vitro stroke model
 Journal of Neurointerventional Surgery 2018
 Fennell VS, Siddiqui AH et al.

Clot type: fibrin rich.

Flow conditions: no flow arrest, no aspiration.

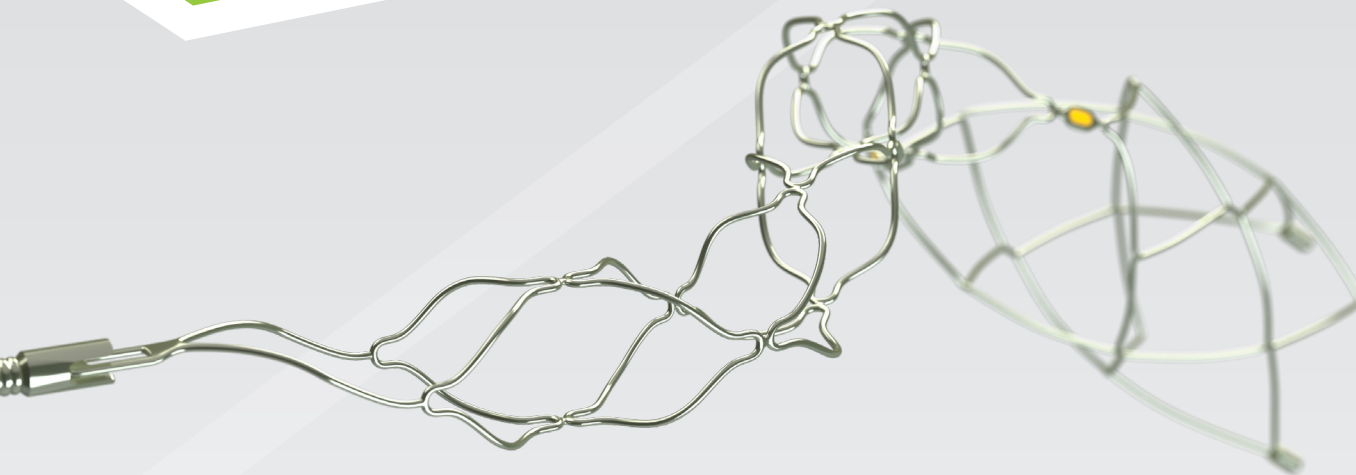
Success: mTICI ≥ 2b

*In vitro Study

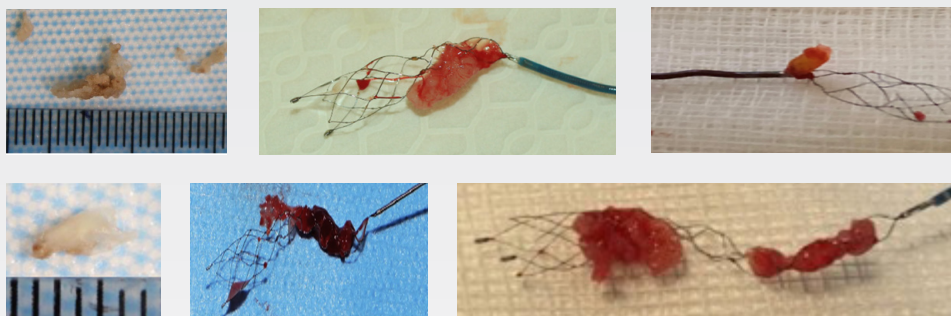
Proximal coil: radiopaque for positioning guidance

CERENOVUS NIMBUS™

geometric clot extractor



Tough clot retrieved using CERENOVUS NIMBUS™



CERENOVUS NIMBUS™ geometric clot extractor

Product Code	Indicated Vessel Diameter	Distal Barrel Section Outer Cage Diameter	Working Length	Proximal Spiral Section Outer Cage Diameter	Microcatheter Compatibility	Proximal Coil Length	Overall Length
GCE4528	1.5–5.0mm	4.5mm	28mm	2.25mm	0.021"	20cm	193cm

¹ Zaidat et al 2018, Primary results of the multicenter ARISE II study

² Lapergue et al 2019. Effect of endovascular contact aspiration vs stent retriever on revascularization in patients with acute ischemic stroke and large vessel occlusion. The ASTER randomized clinical trial.

³ Turk et al 2019, Aspiration thrombectomy versus stent retriever thrombectomy as first-line approach for large vessel occlusion (COMPASS): a multicenter, randomized, open label, blinded outcome, non-inferiority trial

⁴ Nogueira et al 2018. Safety and Efficacy of a 3-Dimensional Stent Retriever With Aspiration-Based Thrombectomy vs Aspiration-Based Thrombectomy Alone in Acute Ischemic Stroke Intervention: A Randomized Clinical Trial

⁵ Fennel et al 2018. What to do about fibrin rich "tough clots"? Comparing the Solitaire stent retriever with a novel geometric clot extractor in an in vitro stroke model

A tough clot is an adherent, durable thrombus that has high stiffness making it resistant to endovascular thrombectomy. General characteristics of these clots are that they are fibrous and consist of few RBCs. In vitro thrombectomy simulation with tough clots result in inferior revascularization rates compared to more compliant clots.

Johnson & Johnson Medical Ltd.
Pinewood Campus, Nine Mile Ride
Wokingham, RG40 3EW
United Kingdom

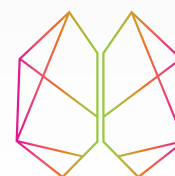
Registered Office:
Baird House,
4 Lower Gilmore Bank,
Edinburgh EH3 9QP
Registered in Scotland, No.SC 132162

Legal Manufacturer:
Neuravi Ltd.
Block 3,
Ballybrit Business Park
Galway, H91 K5YD
Ireland

Important information: Prior to use, refer to the instructions for use supplied with this device for indications, contraindications, side effects, warnings and precautions.

The third party trademarks used herein are the properties of their respective owners

This publication is not intended for distribution outside of EMEA
© CERENOVUS 2020. All rights reserved. 145284-200701 EMEA



CERENOVUS
PART OF THE **Johnson & Johnson** FAMILY OF COMPANIES