



CARE  
CUP AA-G



Anita cares.

## LINGERIE & BREAST FORMS 2023

---

Please find all medical styles in our new catalogue:  
POST-OP COMPRESSION GARMENTS & LYMPH SUPPORT GARMENTS 2023

# We take responsibility – everything from one supplier

## ANITA – a family business since 1886.

As a 100% family-owned business in the 4th generation, we have been taking responsibility for over 135 years – for our employees, our products and our environment. It is important for us to embody this attitude in all our daily operations.

We interact fairly and respectfully with each other, cultivating a positive culture in all areas including within our company. No matter where we are in the world.

We are one of the few manufacturers who develop and produce our own products almost exclusively in our own production sites – worldwide and according to the highest European quality standards. Good working conditions and a fair wage structure – at all of our sites.

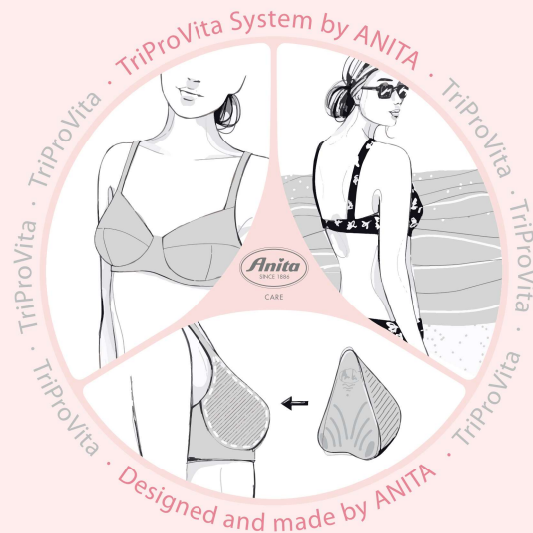
We strive for durable quality products that last almost forever and are manufactured with respect for people and the environment. All our products are developed in-house at ANITA, extensively tested, carefully produced and checked before they go to the end consumer. On average, they consist of 25 parts and pass through around 50 pairs of hands in various work steps, with a great deal of attention to detail.

## Tested and certified

- Verified by a range of independent tests with regard to functional suitability, effect and quality
- Certified as an aid; approved and listed with an aid number
- ANITA has a certified quality management system that complies with DIN EN ISO 9001 and DIN EN ISO 13485 to ensure the quality of products throughout the entire value chain.

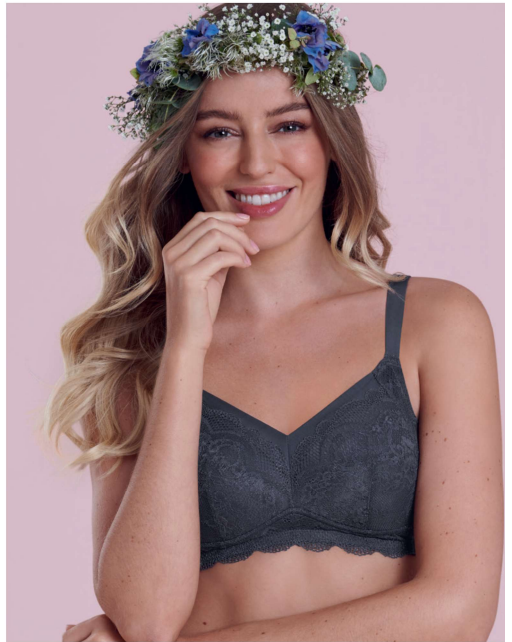
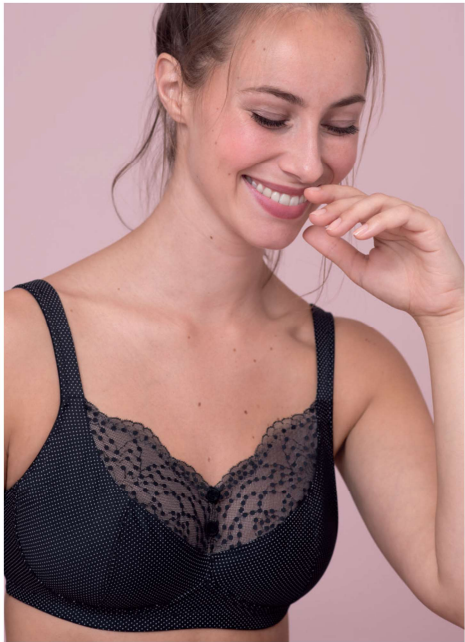
## The TriProVita system

Special bras, breast forms and special swimwear are the three types of products found at the heart of ANITA's TriProVita system. The breast forms are the perfect match for Anita care special bras and swimwear. This attuned trio from Anita care offers optimum support following breast surgery and a whole new lease of life.

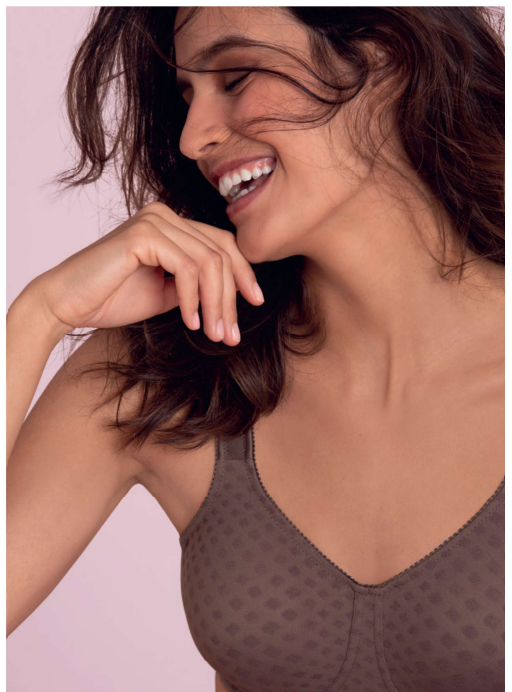


We guarantee complete coverage from one source, with everything you need for maximum reliability and wearing comfort.





Anita cares.



# Dear customers, our Anita care bras feature high functionality and a perfect fit

**All Anita care special bras come without underwire.**

In the following you will find a short description of our functions C1, C2 and C3, as well as our function-related icons. These identifiers can be found after each Article No.

**Anita care bras always come equipped with:**

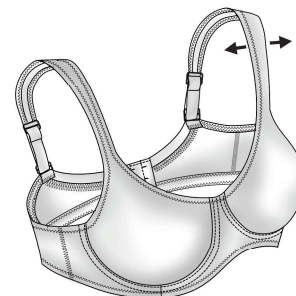
- Straps that are wider in larger cup sizes
- Additional back reinforcement that increases in larger sizes

## Light function C1

Identifier: "C1" following the Article No.

**Anita care initial care bras with "LIGHT" function feature:**

- More lightweight, softer materials

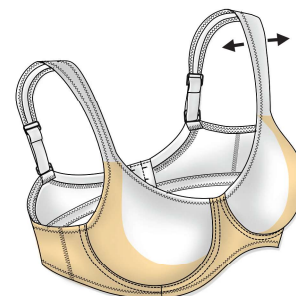


## Medium function C2

Identifier: "C2" following the Article No.

**Anita care bras with "MEDIUM" function feature:**

- Supportive materials are used for the entire bra, some with additional support functions

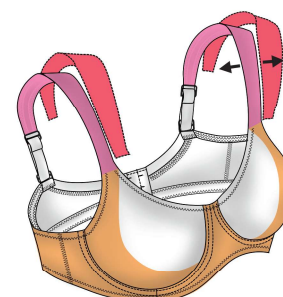


## High function C3

Identifier: "C3" following the Article No.

**Anita care bras with "HIGH" function feature at least one of the following:**

- Robust, supporting materials in the cup
- Supportive materials at the back
- Wide, padded straps



Also after partial and restorative breast surgery



For especially sensitive skin and after radiation therapy

A detailed outline description can be found on page 118

You can also find the function descriptions online at:  
[www.anita.com/functions](http://www.anita.com/functions)



scan me



# FAVOURITES

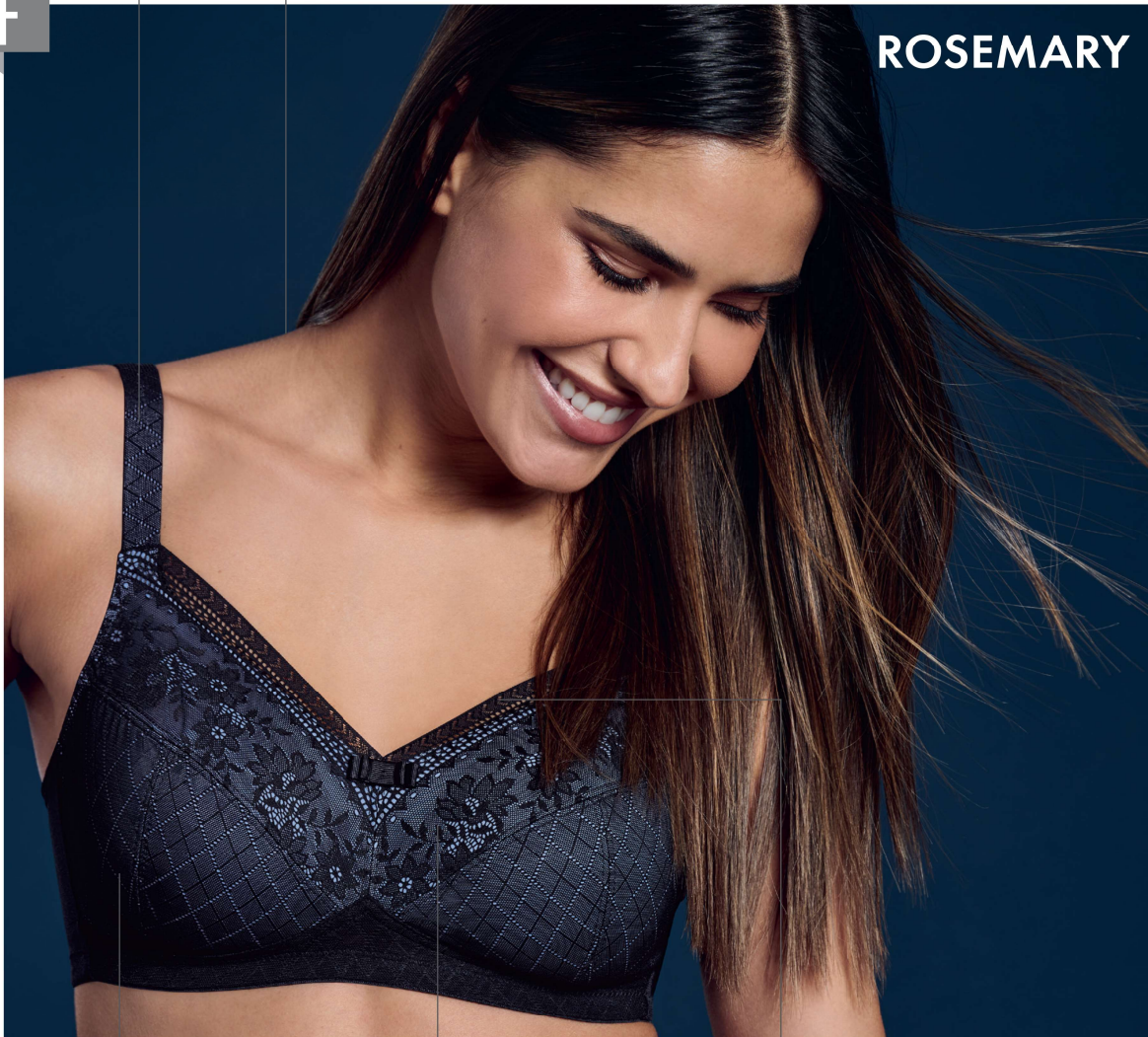
Key products that we believe in and which have a huge amount of potential. We pay particular attention to these styles in our consumer communications.

Wider straps in the larger sizes to relieve strain on the neck and shoulders

Four-position fastener for optimum feeling of comfort

F

ROSEMARY



Rosemary STYLE 4785X.001 · Cup A – E



Three-part cups lined with opaque, soft charmeuse fabric

Floral, flat and soft lace combined with an all-over check pattern

The soft, flat lace charmingly plays around the décolleté line



CARE

Wide, flat, padded  
comfort straps

F

LENI



Leni STYLE 5785X.107 · Cup AA – E



Seamless pre-formed pockets  
made of soft, stretch fabric,  
with seamless tailored edges

Fine, decorative piping  
along neckline

Unique high-volume jacquard  
fabric with a concealing effect







**D Havanna 5712X:**

- Spezial-BH
- Taschen mit Undercups aus Baumwolle, Obercups aus transparentem Tüll
- Eingearbeitete Bruststütze bei größeren Größen
- Träger aus weichem Schaum mit weichem, elastischem Material ummantelt

**EN Havanna 5712X:**

- Special bra
- Pockets with cotton lower cups, transparent tulle upper cups
- Incorporated breast support in larger sizes
- Straps made of soft foam material, enveloped in gentle, elastic fabric

**F Havanna 5712X:**

- Soutien-gorge pour prothèses
- Poches avec bas du bonnet en coton et haut du bonnet en tulle transparent
- Renfort de poitrine intégré sur les grandes tailles
- Bretelles en mousse souple recouvertes d'une matière douce et élastique

**ES Havanna 5712X:**

- Sujetador protésico
- Fundas con parte inferior de la copa de algodón, parte superior de tul transparente
- Pletina de refuerzo adicional en tallas superiores
- Tirantes de espuma blanda revestida de suave material elástico

**I Havanna 5712X:**

- Reggiseno con taschine
- Taschine con coppe inferiori in cotone e coppe superiori in tulle trasparente
- Sostegno seno integrato per le taglie più grandi
- Spalline in morbida schiuma rivestita di morbido materiale elastico

**NL Havanna 5712X:**

- Speciale beha
- Hoesjes met ondercups van katoen, bovencups van transparant tulle
- Ingewerkte cupsteun bij grotere maten
- Schouderbandjes van zachte schuimstof, omhuld met elastisch materiaal



**D Lisa 5726X:**

- Spezial-BH
- Nahtlos vorgeformte Taschen aus weicher, elastischer Ware mit nahtlos verarbeiteten Abschlusskanten
- Einzigartige Volumen-Jacquardware wirkt ausgleichend
- Angenehmer Tragekomfort durch hohe Atmungsaktivität und schnellen Feuchtigkeitstransport
- Seitlicher Tascheneingriff mit elastischem Flanschband unterlegt
- Breite, flach gepolsterte Komfortträger
- Das seitliche Rückenteil ist doppellagig ohne Seitennaht

**EN Lisa 5726X:**

- Special bra
- Seamless pre-formed pockets made of soft, stretch fabric, with seamless tailored edges
- Unique high-volume jacquard fabric with a concealing effect
- Very comfortable to wear thanks to the high breathability and fast moisture transport
- Pocket opening to the side lined with an elastic fleecy band
- Wide, flat, padded comfort straps
- The sides at the back are double-layered with no side seam

**F Lisa 5726X:**

- Soutien-gorge pour prothèses
- Poches préformées sans couture en matière douce et élastique, avec ourlets sans couture
- Tissus Jacquard en volume avec effet dissimulant
- Confort assuré par la matière hautement respirante et l'évacuation rapide de la transpiration
- Ouverture latérale des poches doublée d'une bande élastique en molleton
- Bretelles plates, larges et rembourrées
- Les bandes latérales du dos sont à double épaisseur sans couture et camouflent les petites imperfections

**ES Lisa 5726X:**

- Sujetador protésico
- Fundas preformadas sin costuras, de tejido suave y elástico, con bordes confeccionados sin costuras
- Exclusivo tejido jacquard ligeramente voluminoso de efecto disimulante
- Óptimo confort en el porte gracias a sus propiedades de alta transpirabilidad y rápida expulsión de la humedad
- Apertura lateral del bolsillo forrada con suave banda elástica
- Tirantes confort suavemente acolchados, anchos y planos
- Laterales de la espalda en doble capa de tejido sin costuras

**I Lisa 5726X:**

- Reggiseno con taschine
- Taschine preformate senza cuciture, in morbida tessuto elastico con orli dei bordi senza cuciture
- Tessuto jacquard esclusivo ad effetto volumizzante
- Molto confortevole grazie all'elevata traspirabilità ed alla rapida termoregolazione
- Apertura laterale delle taschine con morbida fascetta elastica
- Spalline larghe, piatte e imbottite
- Le fasce laterali sono doppiate e prive di cuciture

**NL Lisa 5726X:**

- Speciale beha
- Naadloos voorgevormde hoesjes van bijzonder zachte, elastische stof met naadloos afgewerkte randen
- Uniek volume Jacquard materiaal werkt camouflerend
- Aangenaam draagcomfort door groot ademend vermogen en snel afvoeren van transpiratievocht
- Opening hoesje aan de zijkant, gevoerd met elastisch fleecy band
- Brede, vlak gepolsterte comfort-schouderbanden
- Het zijpand is dubbellaags zonder zijnaad

# HAVANNA SPECIAL BRA

STYLE 5712X · C3



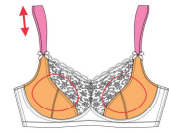
Pockets on both sides



Cup: A – E  
D/EUR: 75 – 100  
GB/US: 34 – 44  
France: 90 – 115  
Italia: 3 – 8

001 612  
753

75% PA, 20% CO, 5% EL



STYLE 1512 · C1

High-waist brief+



D/EUR: 38 – 52  
GB: 32 – 46  
US: 8 – 22  
France: 40 – 54  
Italia: 42 – 56

001 612  
753

85% PA, 15% EL



# LISA SPECIAL BRA

STYLE 5726X · C2



Pockets on both sides



Cup: AA – B  
D/EUR: 75 – 110  
GB/US: 34 – 48  
France: 90 – 125  
Italia: 3 – 10

001 006  
047 408  
544 754  
776

75% PA, 25% EL

Cup: C  
D/EUR: 75 – 105  
GB/US: 34 – 46  
France: 90 – 120  
Italia: 3 – 9

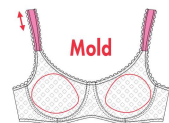
001 006  
047 754

Cup: C  
D/EUR: 75 – 95  
GB/US: 34 – 42  
France: 90 – 110  
Italia: 3 – 7

408 544  
776

Cup: D  
D/EUR: 75 – 90  
GB/US: 34 – 40  
France: 90 – 105  
Italia: 3 – 6

001 006  
047 408  
544 754  
776



ADDITIONAL SIZE  
Cup C 100 + 105 (001+006+047+754)  
spring/summer 2023

STYLE 1426 · C1

High-waist brief



D/EUR: 38 – 44  
GB: 32 – 38  
US: 8 – 14  
France: 40 – 46  
Italia: 42 – 48

001 047  
408 544  
776

75% PA, 25% EL

D/EUR: 36 – 48  
GB: 30 – 42  
US: 6 – 18  
France: 38 – 50  
Italia: 40 – 52

006 754



C1 = light support · C2 = medium support · C3 = firm support





CARE

STYLE 5349X.001

## **D So fühle ich mich sicher**

Nach der OP ist der optische Ausgleich ein essenzieller Faktor – das Gewicht ist jedoch entscheidend für das Wohlbefinden der Kundin. Vollprothesen mit vollem Gewichtsausgleich bieten hier Ihrer Kundin die Möglichkeit neben der Optik auch das Gewicht voll auszugleichen. Die unterschiedlichen Formen bieten hierbei Ausgleich im Ober- und im Achselbereich.

- Natürliches Empfinden in Optik und Gewicht
- Flacher Rand und unterschiedliche Formen zur perfekten Versorgung unterschiedlicher Bedürfnisse

## **EN Gives me a feeling of security**










Visual balance is an essential factor for feeling good after breast surgery – as is a good balance of weight. Full prostheses with the right weight balance mean that your customers will not only look symmetrical, but also feel well balanced. The various shapes of the prostheses offer balance in the upper chest area and underarm area.

- A natural feel in terms of look and weight
- Flattened edges and a variety of shapes allow the treatment of a variety of needs

## **F Je me sens en sécurité**

Après une opération, la compensation visuelle est essentielle, mais le poids de la prothèse l'est tout autant pour se sentir bien. Les prothèses pleines offrent une compensation complète en termes de poids, une solution idéale pour vos clientes. Les différentes formes offrent une compensation optimale dans les parties supérieures et axillaires du sein.

- Sensation naturelle en termes de visuel et de poids
- Bordure plate et différentes formes pour répondre idéalement aux différents besoins

Full breast forms	Weight reduction of up to**	 Triangular form	 Triangular shape with a reduced footprint	 Triangular shape with Flex-Gap fold	 Triangular shape with adhesive pad	 Triangular shape with textile backing	 Triangular shape with textile backing, can be filled	 Asymmetric triangular shape	 Drop-shaped	 Heart shape
Standard & Soft		<b>1053X</b> TriWing Size 55 – 105		<b>1058X</b> TriNature Size 60 – 115				<b>1076L/R</b> Full breast form Size 60 – 125	<b>1022X</b> Full breast form Size 50 – 115	
		<b>1043X</b> TriVaria Size 65 – 115								

\* 2-layer breast forms

\*\* Same shape and size as a standard gel breast form (approx. figures)

### ES Así me siento segura

Después de una cirugía, la compensación visual es un factor esencial - pero también el peso es clave para el bienestar de la paciente. Las prótesis totales ofrecen a su cliente la posibilidad de compensar no solo el efecto óptico, sino también el peso. Las diferentes formas de nuestras prótesis brindan compensación incluso en zonas superior e inferior de las axilas.

- Sensación natural en apariencia y peso
- Borde plano y diferentes formas para satisfacer a la perfección todas las necesidades.

### I E mi sento sicura

Dopo l'intervento, la compensazione a livello estetico rappresenta un fattore importantissimo, ma anche il peso è essenziale per assicurare il benessere della donna. Le protesi complete con piena compensazione del peso soddisfano entrambe le esigenze. Le diverse forme offrono in tal senso una compensazione ottimale nella parte superiore e laterale del seno.

- Sensazione di naturalezza a livello estetico e di peso
- Lembi piatti e forme diverse per una compensazione ottimale a seconda delle varie esigenze

### NL Zo voel ik mij zeker

Na de operatie is optische balans een essentiële factor - het gewicht is echter bepalend voor het welzijn van de cliënt. Een volledige prothese met volledig gewichtcompensatie biedt uw klant de mogelijkheid om, naast de optiek, ook het gewicht in balans te brengen. De verschillende vormen bieden compensatie in het bovenste en onderste okselgebied.

- Natuurlijk gevoel in optiek en gewicht
- Vlakke randen en verschillende vormen voor perfecte verzorging bij verschillende behoeften





# FULL BREAST FORM

## FULL BREAST FORM

### STYLE 1022X

Can be used on both sides

STANDARD & SOFT

BASIS



100% SIL

Deutsche Hilfsmittel-Nr.: 37.35.02.0017

D/EUR: 50 – 115

INT: 00 – 12

FR: 65 – 130

007

#### D 1022X:

- Vollprothese
- Beidseits verwendbar
- Bei erhaltenem oberen Brustansatz
- Drehbar durch spezielle Tropfenform
- Gut einsetzbar

#### EN 1022X:

- Full breast form
- Can be used on both sides
- With an unaffected upper breast
- Rotatable thanks to special drop shape
- Easy to use

#### F 1022X:

- Prothèse pleine
- Utilisation possible des deux côtés
- Lors de la préservation de la naissance de la poitrine
- Sa forme en goutte permet de la retourner
- Facile à utiliser

#### ES 1022X:

- Prótesis total
- Utilizable a ambos lados
- Adecuada cuando se conserva el nacimiento superior del pecho
- Gracias a su forma especial de gota se puede girar según las necesidades
- Buena adaptación

#### I 1022X:

- Protesi completa
- Bilaterale
- In caso di conservazione della parte superiore del seno
- Grazie alle speciale forma a goccia si può indossare con la punta rivolta verso la parte superiore del seno, oppure verso la parte ascellare
- Si utilizza in molteplici casi di intervento

Nr. repertorio: 72614/R

#### NL 1022X:

- Volledige prothese
- Aan beide kanten te gebruiken
- Bij behoud van de bovenste borstaanzet
- Draaibaar door speciale druppelvorm
- Goed toeepasbaar

# TRIWING

## FULL BREAST FORM

### STYLE 1053X

Can be used on both sides

STANDARD & SOFT

BASIS



100% SIL

Deutsche Hilfsmittel-Nr.: 37.35.02.0014

D/EUR: 55 – 105

INT: 0 – 10

FR: 70 – 120

007

#### D TriWing 1053X:

- Vollprothese
- Beidseits verwendbar
- Flache Prothesenrückseite
- Perfekt geeignet bei wenig Restgewebe

#### EN TriWing 1053X:

- Full breast form
- Can be used on both sides
- Breast form with flat back
- Perfectly suited for little residual tissue

#### F TriWing 1053X:

- Prothèse pleine
- Utilisation possible des deux côtés
- Dos plat à l'arrière de la prothèse
- Parfait pour les poitrines avec peu de tissu après l'opération

#### ES TriWing 1053X:

- Prótesis total
- Utilizable a ambos lados
- Prótesis con parte posterior plana
- Perfecto para poco tejido mamario residual

#### I TriWing 1053X:

- Protesi completa
- Bilaterale
- Retro della protesi piatto
- Particolarmente indicata quando il tessuto residuo è scarso

Nr. repertorio: 73638/R

#### NL TriWing 1053X:

- Volledige prothese
- Aan beide kanten te gebruiken
- Vlakke prothese achterkant
- Perfect geschikt bij weinig restweefsel

# TRINATURE

## FULL BREAST FORM

### STYLE 1058X

Can be used on both sides

STANDARD & SOFT

BASIS



100% SIL

Deutsche Hilfsmittel-Nr.: 37.35.03.0009

D/EUR: 60 – 115

INT: 1 – 12

FR: 75 – 130

007

#### D TriNature 1058X:

- Vollprothese
- Beidseits verwendbar
- Flex-Gap-Technologie für ein natürliches Schwingungsverhalten und Abflachen der Prothese beim Liegen

#### EN TriNature 1058X:

- Full breast form
- Can be used on both sides
- Flex-Gap technology for natural movement and shaping of the breast form when lying down

#### F TriNature 1058X:

- Prothèse pleine
- Utilisation possible des deux côtés
- La technologie Flex-Gap assure des balancements naturels de la prothèse et son aplatissement en position couchée

#### ES TriNature 1058X:

- Prótesis total
- Utilizable a ambos lados
- La tecnología Flex-Gap proporciona a la prótesis el movimiento de oscilación natural de una mama y se aplanan cuando se coloca en posición horizontal

#### I TriNature 1058X:

- Protesi completa
- Bilaterale
- Tecnologia Flex-Gap per una condotta oscillatoria naturale e per la distensione della protesi in posizione supina

Nr. repertorio: 73525/R

#### NL TriNature 1058X:

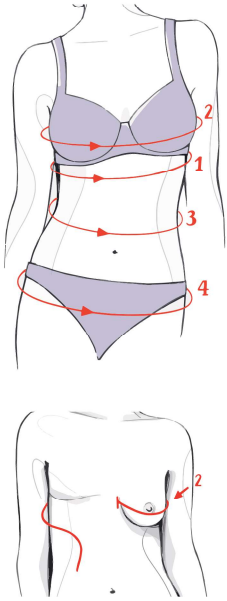
- Volledige prothese
- Aan beide kanten te gebruiken
- Flex-Gap technologie voor een natuurlijke beweging en afvlakken van de prothese bij het liggen



# Find the right size for your customer following our step-by-step guide

When it comes to bras, base your measurements on a well-fitting bra, preferably one without underwires.

The measured size serves as a guideline. The actual size for the best comfort of each customer can only be determined by trying the item on!



## Method 1

### Underbust measurement (1)

Take the measurement by holding the tape directly under the bust. This measurement determines the bra size.

### Bust measurement

Take the bust measurement (2) by holding the tape horizontally over the widest point of the breast.

### Use the chart to find out the cup size

### Pants size

To work out the pants size, measure the waist (3) by holding the tape horizontally around the smallest part of the waist. Measure the hips (4) by holding the tape horizontally around the widest part of the hips.

If there is a considerable difference between the waist and hip measurement, always take the larger size.

## Method 2

### 2. Bust measurement

Slightly lift the naked breast. Measure from the breastbone to the centre of the back. Deduct 2cm and then double the resulting value. (1. Underbust measurement and 2. cup size are calculated in the same way as with method 1)

D/EUR	32	34	36	38	40	42	44	46	48	50	52	54	56	58	60
Konfektionsgröße	XS	XS	S	S	M	M	L	L	XL	XL	XXL	XXL	XXXL	XXXL	XXXXL
Konfektionsgröße int.	XS	XS	S	S	M	M	L	L	XL	XL	XXL	XXL	XXXL	XXXL	XXXXL
Miederhosengröße	55	60	65	70	75	80	85	90	95	100	105	110	115	120	125
Taillenumfang cm (3)	52-57	57-62	62-67	67-72	72-77	77-82	82-87	87-92	92-97	97-102	102-107	107-112	112-117	117-122	122-127
Hüftumfang cm (4)	81-85	85-89	89-93	93-97	97-101	101-105	105-109	109-113	113-117	117-121	121-125	125-129	129-133	133-137	137-141
Untorbrustumfang cm (1)	57,5-62,5	62,5-67,5	67,5-72,5	72,5-77,5	77,5-82,5	82,5-87,5	87,5-92,5	92,5-97,5	97,5-102,5	102,5-107,5	107,5-112,5	112,5-117,5	117,5-122,5	122,5-127,5	127,5-132,5
Unterbrustgröße	60	65	70	75	80	85	90	95	100	105	110	115	120	125	130
Brustumfang cm (2)															
AA	70-72	75-77	80-82	85-87	90-92	95-97	100-102	105-107	110-112	115-117	120-122	125-127	130-132	135-137	140-142
A	72-74	77-79	82-84	87-89	92-94	97-99	102-104	107-109	112-114	117-119	122-124	127-129	132-134	137-139	142-144
B	74-76	79-81	84-86	89-91	94-96	99-101	104-106	109-111	114-116	119-121	124-126	129-131	134-136	139-141	144-146
C	76-78	81-83	86-88	91-93	96-98	101-103	106-108	111-113	116-118	121-123	126-128	131-133	136-138	141-143	146-148
D	78-80	83-85	88-90	93-95	98-100	103-105	108-110	113-115	118-120	123-125	128-130	133-135	138-140	143-145	148-150
E	80-82	85-87	90-92	95-97	100-102	105-107	110-112	115-117	120-122	125-127	130-132	135-137	140-142	145-147	150-152
F	82-84	87-89	92-94	97-99	102-104	107-109	112-114	117-119	122-124	127-129	132-134	137-139	142-144	147-149	152-154
G	84-86	89-91	94-96	99-101	104-106	109-111	114-116	119-121	124-126	129-131	134-136	139-141	144-146	149-151	154-156
H	86-88	91-93	96-98	101-103	106-108	111-113	116-118	121-123	126-128	131-133	136-138	141-143	146-148	151-153	156-158
I	88-90	93-95	98-100	103-105	108-110	113-115	118-120	123-125	128-130	133-135	138-140	143-145	148-150	153-155	158-160
J	90-92	95-97	100-102	105-107	110-112	115-117	120-122	125-127	130-132	135-137	140-142	145-147	150-152	155-157	160-162

## Cross-sizing chart

75B	75C	75D	75E	75F
80B	80C	80D	80E	80F
85B	85C	85D	85E	85F
90B	90C	90D	90E	90F
95B	95C	95D	95E	95F

The cross-sizing chart provides a simple way of finding your best fit. As you can see in the example shown here, your size has been measured as 85D. This can, however, be converted into two other „cross“, or equivalent, sizes.

## Hazel 5765X

FR	IT	GB/US	D/EUR	Cup A/B	Cup C/D	Cup E/F
75	0	28	60	XS	XS	XS
80	1	30	65	XS	XS	XS
85	2	32	70	S	S	S
90	3	34	75	S	S	S
95	4	36	80	M	M	M
100	5	38	85	M	M	M
105	6	40	90	L	L	L
110	7	42	95	L	L	L
115	8	44	100	XL	XL	XL
120	9	46	105	XL	XL	XL
125	10	48	110	XXL	XXL	XXL
130	11	50	115	XXL	XXL	XXL

## Lynn 5738X, 5768X/ Lotta 5739X, 5769X

FR	IT	GB/US	D/EUR	Cup A	Cup B	Cup C	Cup D	Cup E
85	2	32	70	S	S	S	S	M
90	3	34	75	S	S	S	M	M
95	4	36	80	S	S	M	L	L
100	5	38	85	M	M	L	L	XL
105	6	40	90	M	L	L	XL	XL
110	7	42	95	L	L	XL	XL	
115	8	44	100	XL	XL	XXL	XXL	
120	9	46	105	XL	XL	XXL	XXL	
125	10	48	110	XXL	XXL			
130	11	50	115	XXL	XXL			

You can also find how to measure online at: [www.anita.com/how-to-fit](http://www.anita.com/how-to-fit)

GB/US															
Dress size GB	26	28	30	32	34	36	38	40	42	44	46	48	50	52	54
Dress size US	2	4	6	8	10	12	14	16	18	20	22	24	26	28	30
Dress size int.	XS	XS	S	S	M	M	L	L	XL	XL	XXL	XXL	XXXL	XXXL	XXXXL
Panty girle size	26	28	30	32	34	36	38	40	42	44	46	48	50	52	54
Waist measurement inch (3)	20,4-22,4	22,4-24,4	24,4-26,4	26,4-28,3	28,3-30,3	30,3-32,3	32,3-34,3	34,3-36,2	36,2-38,2	38,2-40,2	40,2-42,1	42,1-44,1	44,1-46,1	46,1-48,0	48,0-50,0
Hip measurement inch (4)	31,8-33,4	33,4-35,0	35,0-36,6	36,6-38,2	38,2-39,8	39,8-41,3	41,3-42,9	42,9-44,5	44,5-46,1	46,1-47,6	47,6-49,2	49,2-50,8	50,8-52,4	52,4-53,9	53,9-55,5
Underbust measurement inch (1)	22,6-24,6	24,6-26,6	26,6-28,5	28,5-30,5	30,5-32,5	32,5-34,4	34,4-36,4	36,4-38,4	38,4-40,4	40,4-42,3	42,3-44,3	44,3-46,3	46,3-48,2	48,2-50,2	50,2-52,2
Underbust size	28	30	32	34	36	38	40	42	44	46	48	50	52	54	56
Bust measurement in inch (2)															
AA	27,5-28,3	29,5-30,3	31,5-32,2	33,4-34,2	35,4-36,2	37,4-38,1	39,3-40,1	41,3-42,1	43,3-44,0	45,2-46,0	47,2-48,0	49,2-50,0	51,2-51,9	53,1-53,9	55,1-55,9
A	28,3-29,1	30,3-31,0	32,2-33,0	34,2-35,0	36,2-37,0	38,1-38,9	40,1-40,9	42,1-42,9	44,0-44,8	46,0-46,8	48,0-48,8	50,0-50,8	51,9-52,7	53,9-54,7	55,9-56,7
B	29,1-29,9	31,1-31,8	33,0-33,8	35,0-35,8	37,0-37,8	38,9-39,7	40,9-41,7	42,9-43,7	44,8-45,6	46,8-47,6	48,8-49,6	50,8-51,6	52,7-53,5	54,7-55,5	56,7-57,5
C	29,9-30,7	31,8-32,6	33,8-34,6	35,8-36,6	37,8-38,5	39,7-40,5	41,7-42,5	43,7-44,4	45,6-46,4	47,6-48,4	49,6-50,4	51,6-52,3	53,5-54,3	55,5-56,3	57,5-58,2
D	30,7-31,5	32,6-33,4	34,6-35,4	36,6-37,4	38,5-39,3	40,5-41,3	42,5-43,3	44,4-45,2	46,4-47,2	48,4-49,2	50,4-51,2	52,3-53,1	54,3-55,1	56,3-57,1	58,2-59,0
E	31,5-32,2	33,4-34,2	35,4-36,2	37,4-38,1	39,3-40,1	41,3-42,1	43,3-44,0	45,2-46,0	47,2-48,0	49,2-50,0	51,2-51,9	53,1-53,9	55,1-55,9	57,1-57,9	59,0-59,8
F	32,2-33,0	34,2-35,0	36,2-37,0	38,1-38,9	40,1-40,9	42,1-42,9	44,0-44,8	46,0-46,8	48,0-48,8	50,0-50,7	51,9-52,7	53,9-54,7	55,9-56,7	57,9-58,6	59,8-60,6
G	33,0-33,8	35,0-35,8	37,0-37,8	38,9-39,7	40,9-41,7	42,9-43,7	44,8-45,6	46,8-47,6	48,8-49,6	50,7-51,5	52,7-53,5	54,7-55,5	56,7-57,5	58,6-59,4	60,6-61,4
H	33,8-34,6	35,8-36,6	37,8-38,5	39,7-40,5	41,7-42,5	43,7-44,4	45,6-46,4	47,6-48,4	49,6-50,3	51,5-52,3	53,5-54,3	55,5-56,3	57,5-58,2	59,4-60,2	61,4-62,2
I	34,6-35,4	36,6-37,4	38,5-39,3	40,5-41,3	42,5-43,3	44,4-45,2	46,4-47,2	48,4-49,2	50,3-51,1	52,3-53,1	54,3-55,1	56,3-57,1	58,2-59,0	60,0-61,0	62,2-63,0
J	35,4-36,2	37,4-38,1	39,3-40,1	41,3-42,1	43,3-44,0	45,2-46,0	47,2-48,0	49,2-50,0	51,1-51,9	53,1-53,9	55,1-55,9	57,1-57,9	59,0-59,8	61,0-61,8	63,0-63,8

Italy															
Taglia abbigliamento	36	38	40	42	44	46	48	50	52	54	56	58	60	62	64
Taglia abbigliamento int.	XS	XS	S	S	M	M	L	L	XL	XL	XXL	XXL	XXXL	XXXL	XXXXL
Misura guaina	0	0	1	2	3	4	5	6	7	8	9	10	11	12	13
Circonferenza del girovita cm (3)	52-57	57-62	62-67	67-72	72-77	77-82	82-87	87-92	92-97	97-102	102-107	107-112	112-117	117-122	122-127
Circonferenza dei fianchi cm (4)	81-85	85-89	89-93	93-97	97-101	101-105	105-109	109-113	113-117	117-121	121-125	125-129	129-133	133-137	137-141
Circonferenza del sottoseno cm (1)	57,5-62,5	62,5-67,5	67,5-72,5	72,5-77,5	77,5-82,5	82,5-87,5	87,5-92,5	92,5-97,5	97,5-102,5	102,5-107,5	107,5-112,5	112,5-117,5	117,5-122,5	122,5-127,5	127,5-132,5
Misura del sottoseno	0	1	2	3	4	5	6	7	8	9	10	11	12	13	14
Circonferenza seno in cm (2)															
AA	70-72	75-77	80-82	85-87	90-92	95-97	100-102	105-107	110-112	115-117	120-122	125-127	130-132	135-137	140-142
A	72-74	77-79	82-84	87-89	92-94	97-99	102-104	107-109	112-114	117-119	122-124	127-129	132-134	137-139	142-144
B	74-76	79-81	84-86	89-91	94-96	99-101	104-106	109-111	114-116	119-121	124-126	129-131	134-136	139-141	144-146
C	76-78	81-83	86-88	91-93	96-98	101-103	106-108	111-113	116-118	121-123	126-128	131-133	136-138	141-143	146-148
D	78-80	83-85	88-90	93-95	98-100	103-105	108-110	113-115	118-120	123-125	128-130	133-135	138-140	143-145	148-150
E	80-82	85-87	90-92	95-97	100-102	105-107	110-112	115-117	120-122	125-127	130-132	135-137	140-142	145-147	150-152
F	82-84	87-89	92-94	97-99	102-104	107-109	112-114	117-119	122-124	127-129	132-134	137-139	142-144	147-149	152-154
G	84-86	89-91	94-96	99-101	104-106	109-111	114-116	119-121	124-126	129-131	134-136	139-141	144-146	149-151	154-156
H	86-88	91-93	96-98	101-103	106-108	111-113	116-118	121-123	126-128	131-133	136-138	141-143	146-148	151-153	156-158
I	88-90	93-95	98-100	103-105	108-110	113-115	118-120	123-125	128-130	133-135	138-140	143-145	148-150	153-155	158-160
J	90-92	95-97	100-102	105-107	110-112	115-117	120-122	125-127	130-132	135-137	140-142	145-147	150-152	155-157	160-162

France															
Taille de confection	34	36	38	40	42	44	46	48	50	52	54	56	58	60	62
Taille de confection int.	XS	XS	S	S	M	M	L	L	XL	XL	XXL	XXL	XXXL	XXXXL	XXXXL
Taille de gaine	80	85	90	95	100	105	110	115	120	125	130	135	140	145	150
Tour de taille cm (3)	52-57	57-62	62-67	67-72	72-77	77-82	82-87	87-92	92-97	97-102	102-107	107-112	112-117	117-122	122-127
Tour de hanches cm (4)	81-85	85-89	89-93	93-97	97-101	101-105	105-109	109-113	113-117	117-121	121-125	125-129	129-133	133-137	137-141
Tour sous-poirine cm (1)	57,5-62,5	62,5-67,5	67,5-72,5	72,5-77,5	77,5-82,5	82,5-87,5	87,5-92,5	92,5-97,5	97,5-102,5	102,5-107,5	107,5-112,5	112,5-117,5	117,5-122,5	122,5-127,5	127,5-132,5
Tour sous-poirine	75	80	85	90	95	100	105	110	115	120	125	130	135	140	145
Tour de poitrine in cm (2)															
AA	70-72	75-77	80-82	85-87	90-92	95-97	100-102	105-107	110-112	115-117	120-122	125-127	130-132	135-137	137-139
A	72-74	77-79	82-84	87-89	92-94	97-99	102-104	107-109	112-114	117-119	122-124	127-129	132-134	137-139	142-144
B	74-76	79-81	84-86	89-91	94-96	99-101	104-106	109-111	114-116	119-121	124-126	129-131	134-136	139-141	144-146
C	76-78	81-83	86-88	91-93	96-98	101-103	106-108	111-113	116-118	121-123	126-128	131-133	136-138	141-143	146-158
D	78-80	83-85	88-90	93-95	98-100	103-105	108-110	113-115	118-120	123-125	128-130	133-135	138-140	143-145	158-160
E	80-82	85-87	90-92	95-97	100-102	105-107	110-112	115-117	120-122	125-127	130-132	135-137	140-142	145-147	160-162
F	82-84	87-89	92-94	97-99	102-104	107-109	112-114	117-119	122-124	127-129	132-134	137-139	142-144	147-149	162-164
G	84-86	89-91	94-96	99-101	104-106	109-111	114-116	119-121	124-126	129-131	134-136	139-141	144-146	149-151	164-166
H	86-88	91-93	96-98	101-103	106-108	111-113	116-118	121-123	126-128	131-133	136-138	141-143	146-148	151-153	166-168
I	88-90	93-95	98-100	103-105	108-110	113-115	118-120	123-125	128-130	133-135	138-140	143-145	148-150	153-155	168-170
J	90-92	95-97	100-102	105-107	110-112	115-117	120-122	125-127	130-132	135-137	140-142	145-147	150-152	155-153	170-172

# Breast form measurement table

## From the bra size to the breast form size

① Find bra size ② Find cup size ③ Select breast form

Example: bra size **85** (UK/US size 38) **C** = breast form size **90** (Int. 7)

The explanations provided here are intended as a guide to help you choose the most suitable breast form for your customer. They can never be wholly accurate as each body type is different and surgical procedures vary - you should therefore also rely on your own experience and intuition. If you aren't 100% sure, try the T-shirt test to check that the breast form fits well and remains invisible under tight-fitting clothing.

### Breast forms

Underbust/ Band size		24	26	28	30	32	34	36	38	40	42	44	46	48	50	52	GB / US / INT.
Cup	AA			00	0	1	2	3	4	5	6	7	8	9	10	11	Breast form size
	A		00	0	1	2	3	4	5	6	7	8	9	10	11	12	
	B	00	0	1	2	3	4	5	6	7	8	9	10	11	12	13	
	C	0	1	2	3	4	5	6	7	8	9	10	11	12	13	14	
	D	1	2	3	4	5	6	7	8	9	10	11	12	13	14		
	E	2	3	4	5	6	7	8	9	10	11	12	13	14			
	F	3	4	5	6	7	8	9	10	11	12	13	14				
G	4	5	6	7	8	9	10	11	12	13	14						

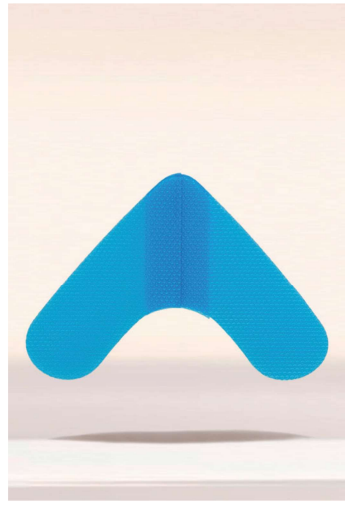
Unterbrust- größe		50	55	60	65	70	75	80	85	90	95	100	105	110	115	120	EUR / D
Cup	AA			50	55	60	65	70	75	80	85	90	95	100	105	110	Prothesen- Größe
	A		50	55	60	65	70	75	80	85	90	95	100	105	110	115	
	B	50	55	60	65	70	75	80	85	90	95	100	105	110	115	120	
	C	55	60	65	70	75	80	85	90	95	100	105	110	115	120	125	
	D	60	65	70	75	80	85	90	95	100	105	110	115	120	125		
	E	65	70	75	80	85	90	95	100	105	110	115	120	125			
	F	70	75	80	85	90	95	100	105	110	115	120	125				
G	75	80	85	90	95	100	105	110	115	120	125						

Tour sous-poitrine		65	70	75	80	85	90	95	100	105	110	115	120	125	130	135	F
Bonne	AA			65	70	75	80	85	90	95	100	105	110	115	120	125	Taille de prothèse
	A		65	70	75	80	85	90	95	100	105	110	115	120	125	130	
	B	65	70	75	80	85	90	95	100	105	110	115	120	125	130	135	
	C	70	75	80	85	90	95	100	105	110	115	120	125	130	135	140	
	D	75	80	85	90	95	100	105	110	115	120	125	130	135	140		
	E	80	85	90	95	100	105	110	115	120	125	130	135	140			
	F	85	90	95	100	105	110	115	120	125	130	135	140				
G	90	95	100	105	110	115	120	125	130	135	140						

Misura del sottoseno			0	1	2	3	4	5	6	7	8	9	10	11	12	I	
Coppa	AA		00	0	1	2	3	4	5	6	7	8	9	10	11	Misure delle protesi	
	A		00	0	1	2	3	4	5	6	7	8	9	10	11		12
	B	00	0	1	2	3	4	5	6	7	8	9	10	11	12		13
	C	0	1	2	3	4	5	6	7	8	9	10	11	12	13		14
	D	1	2	3	4	5	6	7	8	9	10	11	12	13	14		
	E	2	3	4	5	6	7	8	9	10	11	12	13	14			
	F	3	4	5	6	7	8	9	10	11	12	13	14				
G	4	5	6	7	8	9	10	11	12	13	14						

Partial compensation = individual adaptation





## ADHESIVE PAD VALANCE

007

	Cup	D/EUR	GB	US	France	Italia
1032X		60/65 – 100/105	01/02 – 09/10	01/02 – 09/10	75/80 – 115/120	1/2 – 9/10

STYLE 1032X  
100% SIL



## MEDICAL FLEECE

006

	D/EUR	GB	US	France	Italia
1057XI	one size	one size	one size	one size	one size

STYLE 1057XI  
60% CO, 40% PES  
Padding: 100% PES



## Tips for garment care

- Wash by hand with soap or take into the shower
- If breast forms have a textile backing, the fabric should not be pulled or torn
- Dab the wet textile section with some paper or a towel; drying time is around one hour
- Sharp or pointed objects (including animals' claws) can irreversibly damage the film
- Please do not use aggressive detergents or solvent-based cleaning agents

## Additional care tips for adhesive breast forms

- Neutral liquid soap (without silicone) and water is sufficient
- Do not use fabric or paper towels for drying to prevent residues being left on the adhesive surface