



THE NEW WAY OF MARKING

BENCH OR HAND-HELD? CHOOSE THEM BOTH THANKS TO THE 2 IN 1 CONCEPT *

The **2 in 1** concept (bench and hand-held) is an ideal solution for flexible manufacturing environments. Flexmark provides the most value for your direct part marking requirements.

WHY CHOOSE FLEXMARK?

- **EASE OF USE:** user friendly software interface, intuitive navigation with icon based menu, get up and running in minutes
- **ASTHETIC:** large high definition color screen
- **ECONOMICAL:** high quality, precision marking delivered at a cost effective price
- **ERGONOMIC:** two handles enable the marking head to be held and oriented in any position for easy marking
- **ROBUST:** aluminium cast parts
- **POWERFUL:** mark several characters per second, thousands of files stored, USB based controller able to update in less than 2 minutes
- **VERSATILE:** mark on many different materials up to 63 HRC (steel, aluminum, stainless, titanium, plastic, wood etc.)

COMBO MODEL

FLEXIBLE

The Bench model can be converted to a hand-held in less than 10 seconds and can be used to mark a wide variety of parts.

VERSATILE

The outline of the marking window is embedded in the machine base along with graduations for easy part location. Support tools can be stored in the machine base.



Convert from one version to the other within **10** seconds without any tools

ULTRA COMPACT? CHOOSE THE MINI MODEL!

MINI MODEL

INNOVATIVE DESIGN

Its compact and lightweight design makes the Flexmark Mini the ideal equipment for marking heavy, cumbersome and hard-to-reach parts. Its unique shape ensures even weight distribution for better handling. Ideal for reaching hard to access locations.

ECONOMIC

Offers the best combination of quality/price/performance

SIMPLE

Position and mark! No need to set the distance between the stylus and the part, this is worked out automatically by the software. Comfortable to use and easy to set up.

PRECISE

Designed around an X/Y cross table, the high precision mechanics ensure consistent depth and marking quality throughout the marking cycle.

CONTROLLED IMPACT (IIC)

Intelligent Impact Control (IIC) patented technology automatically compensates for the stylus distance to the part once the marking force has been set. There are 5 marking forces available used to control the depth of mark.



GOOD TO KNOW


- The marking head is compatible with the existing Flexmark control box
- For very deep marking we recommend the use of the 120 marking head (marking window 120 x 60 mm / 4.7 x 2.3 inches)

NEW



FlexTM
mark
Mini

FLEXMARK CONTROL BOX

- Large high definition color screen (640 x 480 px), and icon based navigation
- Intelligent marking management 
- RS232 connections and 3x I/O
- USB port for import/export and backup of logos and files
- Third axis Management
- «Easy Shift» feature: graphical view of text repositioning in the marking window
- Multi-lingual - 21 languages available
- Ergonomic design with locating foot and carry handle
- Storage capacity of up to 10,000 files (40 characters files on a single line)
- Fast updates in less than 2 minutes through USB port
- Multiple marking possibilities: text, variable, serial number, time & date stamp, logos * (* optional)
- Straight, angular, circular and radial marking
- (L x W x H): 370 x 215 x 139 mm
14.5 x 8.4 x 5.4 inches
- 5.4kg / 11.9 lbs (with power cord)
- Optional software: Logo Marking with LOG PRO, PC driven with Flexwindows (USB/RS232)



TECHNICAL FEATURES

- Marking window combo model and hand-held standard : 120 x 60 mm/ 4.72" x 2.36"
- Marking window mini model hand-held: 60x30mm/ 2.36" x 1.18"
- Carbide stylus with 90° angle (available in 60° and 120°)
- Column can be rotated up to 180° * degrees
- Manual column scroll adjustment in 3mm/ 0.12" increments

	head mini	head standard	Bench/ column
L	178/ 7.00"	210/ 8.27"	400/ 15.75"
W	93/ 3.66"	273/ 10.75"	350/ 13.78"
H	225/ 8.85"	265/ 10.43"	604/ 23.78"
weight	2,3 kg/ 4.40 lbs	4,3 kg/ 9.48 lbs	6,5 kg/ 14.33 lbs

Dimensions in mm and inches and Weight excluding cable.

*For the combo model

POWER AND ENVIRONMENT

- Power: 300 VA
- Frequency 50 or 60 Hz
- Electrical power 110 or 220 V
- Operating temperature: 0 to 46°C / 115° F
- Machinery directive 2006/42/CE
- Electro-magnetic Compatibility 2014/ 30 / UE
- Low voltage directives 2014 / 35 / UE
- FCC directive chapter 15

ACCESSORIES AND OPTIONS



Transport trolley



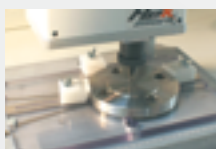
Standard Rotary D axis



Bar end tool



Nameplate/tag support fixture



Parts support



Maintenance kit

ECO DESIGN

- 80% of the materials used can be recycled.
- Reduced energy consumption
- Use of local suppliers reduces carbon footprint
- Reduction of mechanical parts wear
- Dry marking (no material removal, no waste, no fumes)
- No consumables used



INTELLIGENT TECHNOLOGY

**3D
MARK**

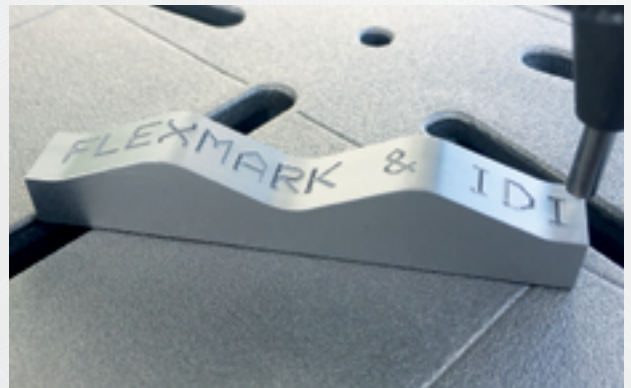
3D MARK

Is based on the ability of our machines to anticipate the surface contour of the parts to be marked thanks to Intelligent Driving Impact Innovation (IDI *)



IDI * MARK:

The IDI technology automatically analyses the distance between the part and the stylus, enabling the machine to mark components with height variations during the marking cycle, ensuring the same consistent mark.



* Patent n° EP-06 764715.6
Patent n° US-9,421,598
Patent n° JP-2009-512631

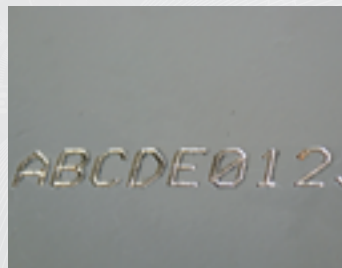
PART APPLICATIONS



Serial numbering on a steel part



Date stamp on anodized aluminum



Deep marking on painted steel



Marking on a steel tube



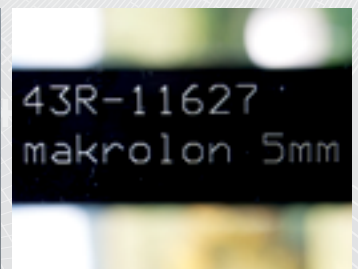
Nameplate



Logo marking



Reference data on a key



Serial number and text on a polycarbon support

FLEXMARK: THREE EASY STEPS



STEP 1: Getting acquainted with the machine

- Visit www.flexmark-marking.com, to find out more information about the Flexmark and our other marking machines.
- To receive more information please fill out the online form or contact us directly.

STEP 2: Sample marking

Would you like to receive free marked sample? Flexmark can send a sample marked on aluminum, steel, stainless steel, plastic,

Or

If you prefer, to send samples to us with the required marking data *, We will mark and return to you free of charge.

* your samples will be returned within 72 hours from receipt.

STEP 3: On-site evaluation

Before purchasing, we can provide an on-site demonstration to show the equipment in action.

98%

Average satisfaction rate of our customers over 3 years*

96%

Average recommendation rate of our customers over 3 years*

*source Cabinet Prestance, France january 2018 Study.

FLEXMARK SERVICES

- PRE-SALES
 - On-site demonstration
 - Free sample marking
 - Free trial
 - Financing solutions
- AFTER SALES SERVICE
 - Phone assistance
 - Maintenance Contracts
 - Factory or on site maintenance contract
 - Repair and support with spare parts

This document is printed on paper from sustainably managed forests (PEFC)



FLEXMARK

I allée du développement
42350 LA TALAUDIÈRE - FRANCE
Tél : +33 (0) 4 77 22 25 91
Fax : +33 (0) 4 77 22 38 93

E-mail : info@flexmark-marking.com



www.flexmark-marking.com

FLEXMARK™ is a brand of Technomark Group