



Elitech Technology, Inc.

Tel: +1 408 898 2866

Email: sales@elitechus.com

Add: 2528 Qume Dr, Ste 2 San Jose, CA 95131, United States

Elitech (UK) Limited

Tel: +44 203 645 1002

Email: info@elitech.uk.com

Add: Unit 13 Greenwich Centre Business Park 53
Norman Road London SE10 9QF

Elitech Brasil

Tel: +55 51 3939 8634

Email: comercial@e-elitech.com

Add: R. Dona Rosalina, 90-Igara, Canoas-RS,
92410-695, Brasil

Jiangsu Jingchuang Electronics Co., Ltd

Tel: +86 516 6890 2808 +86 516 6890 2892

Email: sales@e-elitech.com

Add: No.21 East Zhujiang Rd, Tongshan Economic
Development Zone, Xuzhou, Jiangsu, China



Cold Chain Monitoring & IoT Solutions

Safe · Stable · Reliable

Elitech Technology, Inc.
www.elitechlog.com

Elitech[®]

Innovation Preceding All



About Us

Elitech Technology, Inc.

Elitech is headquartered in San Jose, California, USA and has subsidiaries in China, UK and Brazil with agents around the world. We have designed and manufactured all kinds of cold chain data logger and monitoring system for 27 years. Our advanced 20,000 m² manufacturing plant in Jiangsu, China makes the fast delivery possible on large order.

More than 10 million data logger products are sold every year to over 100 countries around the world. Our 2000 m² professional testing laboratory has been used to guarantee the quantity of every Elitech product and the transportation risks of every stage are under control for our global partners in cold chain related products and services.

In addition, we design and manufacture private label products for large OEM or ODM customers and distributors. Designs are based on our technologies or technologies developed specifically for unique customers.

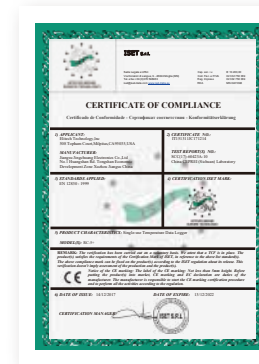
R&D Center



International Certification



FDA 21 CFR Part 11



CE



RoHS



System Certification



Production Center



Test Laboratory



Table of
CONTENTS



Every Link of
Cold Chain

Elitech iCold	1-4
IoT Data Logger Series	5-10
Single-Use Data Logger	11-14
Multi-Use Data Logger	15-21



Elitech software focuses on cold chain data management and analysis. It helps users to comply with the local industry standards and regulations, and improve cold chain quality and performance. Elitech software provides real-time monitoring, parameter configuration, alarm notification, data analysis, report download and other functions that can meet various requirements in different applications.



Cloud Platform

Elitech iCold®

- Real-time data monitoring
- Emails warning and alarm
- Historical data record and query, data analysis report export
- Electronic signature and endorsement for FDA CFR 21 Part 11



Software(PC)

ElitechLog

- Export data and generate analysis reports
- Data analysis in parallel for multiple devices
- Electronic signature for FDA CFR 21 Part 11
- Data sharing on Cloud with Bluetooth data logger

Elitech iCold®

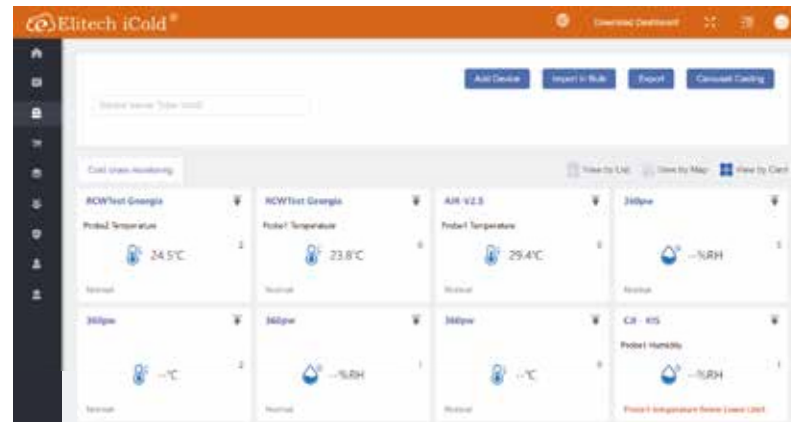
Elitech iCold is a cloud-based remote accessible platform. It is compatible with RCW series products to realize real-time monitoring of cold chain data, automatic alerts and notifications, online data analysis and management. iCold helps users to achieve effective management of every step of cold chain and immediate assessment compliance. It complies with FDA CFR 21 Part 11 requirements and supports iOS and Android apps.

PC

Detailed Functions

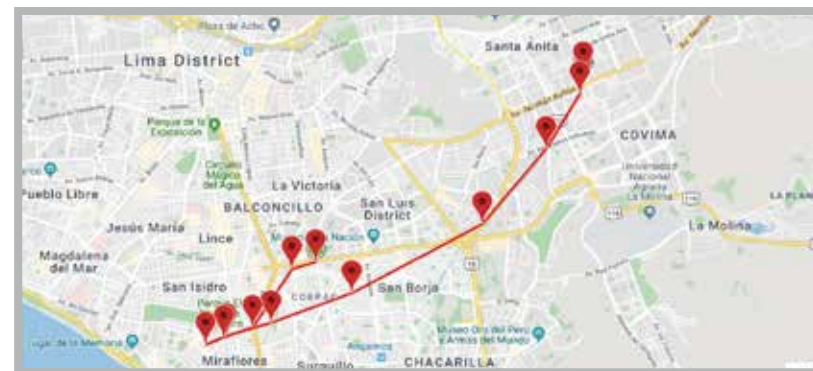
• Real-Time Monitoring

Take control of goods information anywhere at any time, including temperature, humidity and real-time location.



• Track Monitoring

Generate the device's track and routes in the time period according to its location information.



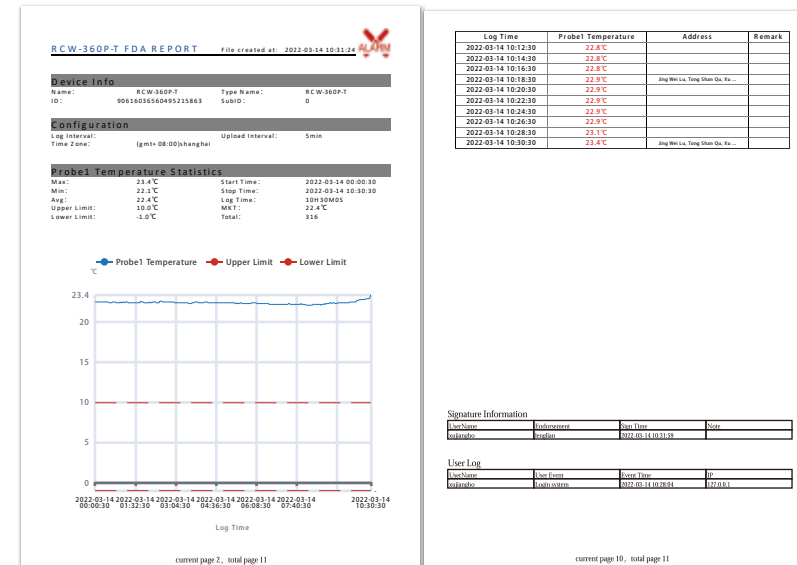
• Alarm & Notification

Temperature and humidity alarms will be sent to relevant accounts via email and app. Users can also subscribe to temperature and humidity information.



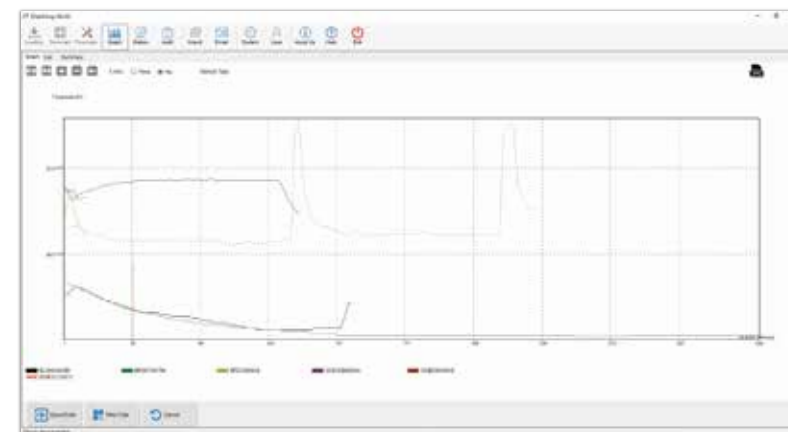
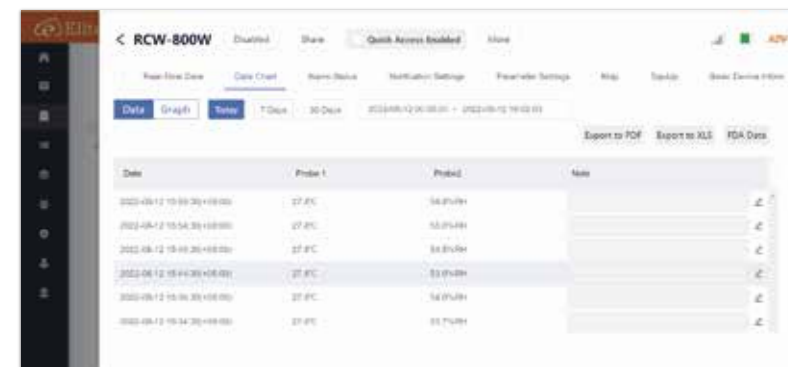
• FDA Data Analysis Report

Comply with FDA and ensure compliance. Quickly generate temperature and humidity data analysis report that includes device and trip information, temperature and humidity list.



• History Query & Download

Historical data record and query, data analysis report export. Support historical data query, graph analysis and export to multiple formats such as Excel and PDF.



APP

• Real Time Monitoring

Check device data and status anywhere and anytime.



• Parameter Settings

Configure device parameters remotely based on cargo shipments and storage.



• Data Query & Printing

Support historical data query, graphic analysis and data report printing via Bluetooth printer.



• Location & Track

Generate the device's track and routes in the time period according to its location information.



ElitechLog

ElitechLog is compatible with RC/LogEt series data loggers. It supports parameter settings, data download, report generation and export, and helps to judge the compliance and effectiveness of shipments in the logistics process. The LogEt series (Bluetooth-enabled) supports data storage on Cloud with Elitech app. It complies with FDA CFR 21 Part 11 requirements and supports Win and MAC versions.

PC

Detailed Functions

• Statistics

Read the current logger's status and parameters. Summarize and display the status information (alarm value, maximum and minimum value, start time, stop time, etc.).



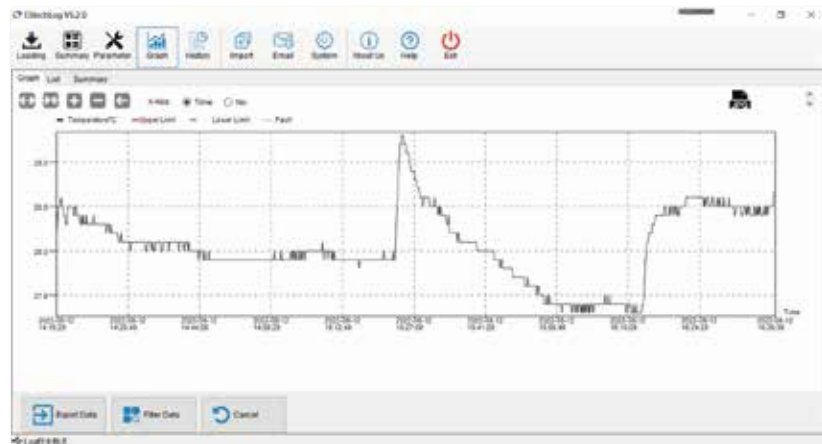
• Parameter Settings

Read the logger's parameters and synchronize the current or latest parameters settings to the page display, or set the parameters manually and save to the logger.



• Graph

Display the selected or historical data in graph. Up to 10 datas can be displayed in the graph simultaneously, it is convenient for users to compare temperature and humidity changes of multiple curves. The graph supports stepless zooming and dragging, and user can click on the button in the upper left corner of the graph to zoom in, zoom out and drag the curve.



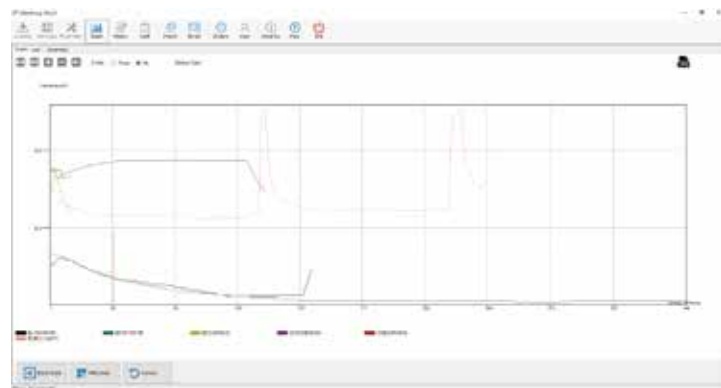
• Data List

Display the selected or historical data in list. It can highlight the over limit data in different colors or compare the multiple loggers data - up to 10 loggers can be listed at the same time.

No.	Time	Temp
1	2022-08-12 14:15:28	28.2
2	2022-08-12 14:15:38	28.4
3	2022-08-12 14:15:48	28.9
4	2022-08-12 14:15:58	28.9
5	2022-08-12 14:16:08	28.9
6	2022-08-12 14:16:18	28.9
7	2022-08-12 14:16:28	28.9
8	2022-08-12 14:16:38	28.9
9	2022-08-12 14:16:48	28.4
10	2022-08-12 14:16:58	28.4
11	2022-08-12 14:17:08	28.9
12	2022-08-12 14:17:18	28.2
13	2022-08-12 14:17:28	28.2
14	2022-08-12 14:17:38	28.9
15	2022-08-12 14:17:48	28.9
16	2022-08-12 14:17:58	28.9
17	2022-08-12 14:18:08	28.9

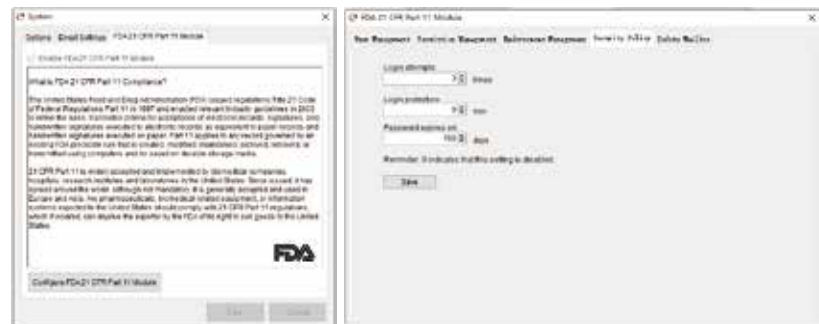
• Multiple Routes Graph

Display graph & data analysis for multiple routes.



• FDA Log

Display and trace the data in compliance with FDA standards, including account (user login, logout, edit, lock), endorsement (unlock, add, edit, delete and modify), data(read, save, import, and export), and the software system modification, etc.



• Endorsement

Display and trace user's endorsement on the current data, including time, content, endorsement account information, etc.

Time	Content	Account
2022-08-12 14:15:28	Unlock	Admin
2022-08-12 14:15:38	Lock	Admin
2022-08-12 14:15:48	Unlock	Admin
2022-08-12 14:15:58	Lock	Admin
2022-08-12 14:16:08	Unlock	Admin
2022-08-12 14:16:18	Lock	Admin
2022-08-12 14:16:28	Unlock	Admin
2022-08-12 14:16:38	Lock	Admin
2022-08-12 14:16:48	Unlock	Admin
2022-08-12 14:16:58	Lock	Admin
2022-08-12 14:17:08	Unlock	Admin
2022-08-12 14:17:18	Lock	Admin
2022-08-12 14:17:28	Unlock	Admin
2022-08-12 14:17:38	Lock	Admin
2022-08-12 14:17:48	Unlock	Admin
2022-08-12 14:17:58	Lock	Admin
2022-08-12 14:18:08	Unlock	Admin

IoT Data Logger



Real Time Temperature & Humidity Monitoring RCW-360



Overview

RCW-360 is a wireless temperature and humidity monitor with 4G/Wi-Fi version. Its low power consumption features long standby time and it designs for multiple installation methods that can be widely used in various temperature and humidity monitoring scenes.

Technical Specifications	RCW-360-THE	RCW-360-TH
Power supply	5V/1A(DC)	5V/1A(DC)
Temperature measuring range	-40°C ~ +80°C	-20°C ~ +70°C
Temperature accuracy	±1.0°C(-25°C~0°C); ±0.5°C(0°C~40°C);±2°C(others)	±1.0°C(-25°C~0°C); ±0.5°C(0°C~40°C);±2°C(others)
Humidity measuring range	10%-95%	10%-95%
Humidity accuracy	±5%RH	±5%RH
sensor	SHT31	HDC1080
Logging interval	5 min to 24 hr.	5 min to 24 hr.
Memory capacity	32,000 points for each channel(Max)	32,000 points for each channel(Max)
Communication interface	4G/Wi-Fi(2.4G)	4G/Wi-Fi(2.4G)
Alarm output	Led,Buzzer, APP, E-mail push	Led,Buzzer, APP, E-mail push
Battery	3.7V lithium battery	3.7V lithium battery
Battery life	Wi-Fi:30days (@25°C, Logging interval=10min)	Wi-Fi:30days (@25°C, Logging interval=10min)
	4G:15days (@25°C, Logging interval=10min)	4G:15days (@25°C, Logging interval=10min)

Features

- Real-time recording and monitoring of temperature and humidity
- App and Email alarms from Cloud; Audible and visual alarm from device
- Multiple installation and power supply methods, flexible to be installed anywhere
- Elitech Cloud supports parameter configurations, graph analysis, report export and etc
- Unlimited Cloud storage with additional local storage of 20,000 points if off-line
- 4G versions support LBS (location-based service) positioning



WiFi Real Time Data Logger RCW-800W



Overview

RCW-800W series is a IoT recorder that communicates through WIFI network, which is used for real-time monitoring, recording, alarming and data uploading of ambient tempera ture/humidity. The recorder is mainly composed of a temperature/humidity sensor and a host instrument. It directly transmits the measured value to the Elitech cold cloud through the Wi-Fi network. It can be stored in the Elitech cold anytime, anywhere through mobile phones and PCs with Internet access functions. View and analyze the data in the cloud platform. After the limit is exceeded, the alarm can be sent in time through SMS, email and other methods.

Features

- Small size, stylish shape, magnetic tray design, easy to install
- Large-size TFT color screen display
- Built-in rechargeable lithium battery, can still provide real-time data upload for a long time after power failure
- The product is suitable for warehouses, cold storage, refrigerated trucks, cool cabinets, medicine cabinets, freezer laboratories and other scenarios

Technical Specifications	RCW-800W-TDE	RCW- 800W-THE
Communication mode	WIFI	
Measurement range	Temperature:-40°C~80°C Humidity:0%RH-100%RH	
Temperature accuracy	±0.5°C(-20°C~40°C);±1°C(others)	
Humidity accuracy	±5%RH(RCW-800W-THE)	
Resolution	0.1°C; 0.1%RH(RCW-800W-THE)	
Recording interval	1-1440 min (default 5min)	
Storage capacity	20,000	
Storage mode	cyclic storage	
Battery	5V/1A、 2000mah	
Battery life	More than 7 days(@25°C,uploade interval 5 min)	
Indicator	Alarm indicator, charging indicator	
Alarm	LED、 messages、 APP push、 email	
Screen	TFT screen	
Protection class	IP50	
Specification	110mm*78mm*27mm	



Real Time Temperature Monitoring GPS Tracker RCW-360 Plus



Overview

Elitech RCW-360Plus is a real-time temperature and humidity data logger featured with a large TFT screen with LBS function. It is widely used in the cold chain monitoring solutions, such as transportation and storage.

- Features**
- 3.7V 5000mAh rechargeable lithium battery, low power consumption and ultra-long standby time
 - LBS feature to monitor transportation track in real time
 - Three alarm notification: SMS, E-mail & APP push
 - Offline data collection up to 100,000 points, automatically upload after networking



Optional

RCW-360 Plus Technical Specifications

Model	RCW-360P-TH	RCW-360P-TDLE	RCW-360P-THDE	RCW-360P-GLE
Sensor type	Internal:SHT31	External:SHT31	External:SHT31	External:SHT31
Channel	Internal - Single T & Single H	External - dual T	External - dual T & dual H	External - dual T
Temperature measuring range	-20°C ~ 60°C	-200°C ~ 150°C	-40°C ~ 80°C	-40°C ~ 80°C
Humidity measuring range	0%RH ~ 100%RH	/	0%RH ~ 100%RH	/
Temperature measuring range	±0.5°C	±0.5°C	±0.5°C	±0.5°C
Humidity accuracy	±5%RH	/	±5%RH	/
Resolution	0.1°C /0.1%RH	0.1°C	0.1°C/0.1%RH	0.1°C
Memory capacity	100000	100000	100000	100000
Log interval	1min ~ 24h	1min ~ 24h	1min ~ 24h	1min ~ 24h
Alarm type	Buzzer	Buzzer	Buzzer	Buzzer
Alarm mode	SMS APP E-mail	SMS APP E-mail	SMS APP E-mail	SMS APP E-mail
Battery	3.7V 5000mAh rechargeable lithium battery	3.7V 5000mAh rechargeable lithium battery	3.7V 5000mAh rechargeable lithium battery	3.7V 5000mAh rechargeable lithium battery
Power supply	5V/2A (DC)	5V/2A (DC)	5V/2A (DC)	5V/2A (DC)
Screen	TFT	TFT	TFT	TFT
Communication interface	4G/WiFi	4G/WiFi	4G/WiFi	4G/WiFi
Waterproof	IP64	IP65	IP65	IP65

LoRa Real Time Temperature Monitoring RCW-3000 Series

(Used with RCW-3200 Sensors)

4G

WiFi

LoRa

Overview

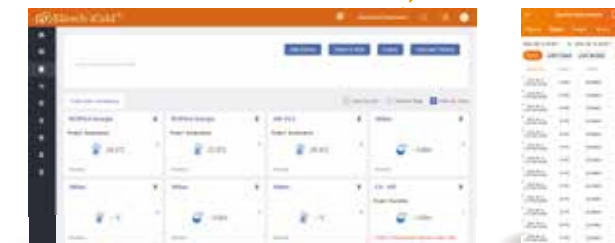
The wireless temperature and humidity monitoring system adopts advanced LORA communication technology, which is composed of wireless collector, wireless repeater, cloud platform, mobile APP, etc. The system uses various transmission technologies (LORA, GPRS, WIFI) to realize network monitoring of environmental temperature and humidity. The system can deploy wireless probes according to the location of the monitoring points, and select GPRS or WIFI to connect to the cloud platform according to the local environment. The wireless collector uploads data in the same wireless way, and the user views the data in real time through the browser or the intelligent terminal. The cloud platform can also be used for temperature and humidity data analysis, report export, historical data query, etc.

Features

- Wireless deployment, no need to punch wiring, easy installation
- Lora wireless communication, to meet the visual range of 1,000 meters of data transmission;
- Automatic networking, gateway agrees to upload data, support unified management of monitoring platform
- Multiple communication, 4G/ WiFi version of the repeater free choice, to meet the communication requirements of different environments
- Remote temperature and humidity data monitoring and recording, data cloud storage, safe and reliable



RCW-3000



Technical Specifications		RCW-3000
Data Update Interval		1-1440 Min (Default 1min)
Maximum Transport Distance		1000 meters
Maximum Adapter connected		100 Pieces
Data Storage Mode		Circular Storage
Connection Type		USB Type-C (Rechargeable and data output)
Power Input		5V/2A
Battery Volume		5000mAh Rechargeable Lithium Battery
Display		TFT
Alarm Mode		Sound, light, Platform
Product Size		130mm*130mm*35mm
RCW-3200		
Model	Built-in Temp & Humi	External Temp & Humi
Network	Lora	Lora
Sensor Type	Temp and humi integrated sensor	Temp and humi integrated sensor
Temperature Range	-20°C~50°C 0%RH-99%RH	-40°C-85°C 0%RH-99%RH
Sensor Accuracy	±0.3°C(-20°C~40°C), ±0.5°C	±0.3°C(-20°C~40°C), ±0.5°C
	Humi accuracy:±3%RH	Humi accuracy:±3%RH
Storage Cap	32000 Points	32000 Points
Connection	Micro USB(Recharge and data output)	Micro USB(Recharge and data output)
Battery Volume	3200MAH Chargeable Lithium Battery	3200MAH Chargeable Lithium Battery
Power Adapter	5V/1A	5V/1A
Protection Class	Built-inIP65	External IP64
Product Size	110×70×18mm	110×70×18mm

Data Logger Series

Single
Use

Single-Use Temperature Indicators Ti Series

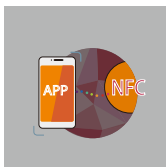
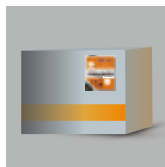


Overview

This is a temperature tag with NFC communication function, which is mainly used in application scenarios such as blood vaccines, biological preparations, biological medicines, cold chain foods, and precision instruments. The product is light weight, thin and compact, and the start-stop operation with break-tab is simple and reliable. It is suitable especially for the smallest packaging products. It supports any handheld devices with NFC function, such as a mobile phone to retrieve key data during temperature monitoring and long battery life to ensure data recording during the entire monitoring process.

Instructions

Break to start recording → Paste the data logger label onto the packaging box → Break to stop recording → Place the phone near to the data logger label to retrieve data



iOS, Android APP Support

Technical Specifications

Memory	3800(MAX)
Measuring Range	-30°C-60°C
Accuracy	± 0.5°C(-20°C~40°C), ±1°C(others)
Sensor	Built-in NTC
Sampling Interval	1min(standard,others on request)
Recording Interval	12h(standard,others on request)
Start Delay	30 min(standard,others on request)
Start Mode	Break to start
Stop Mode	Break to stop
Alarm threshold	Optional,upto6 points
Data Interface	NFC
Battery life	3 years(normal temperature)
Shelf life/Battery	4 years/CR2032 lithium battery
Report Generation	PDF/Excel report
Protection Class	IP54
Weight	Approx.11g
Dimensions	40mm*57mm *5.5mm (L * W * H)



iOS, Android APP Support

Overview

RC-17/RC-17N is mainly used for temperature monitoring and recording in food and medicine storage and transportation environment, such as refrigerated bags, refrigerated trucks, containers, etc. This product is connected to the computer through USB, and the recorded data is directly output as PDF report; Built-in temperature probe, powered by CR2450 wide temperature lithium battery, waterproof grade up to IP67. Products come with a bar code.

RC-17N supports any handheld devices with NFC function, such as a mobile phone to retrieve key data during temperature monitoring.

Single-Use Data Logger RC-17/RC-17N

Single
Use

Technical Specifications

Temperature Range	-30°C ~ 70°C
Resolution	0.1°C
Storage Temperature	-30°C ~ 70°C
Measurement Accuracy	0.5°C/0.9°F (-20°C ~ 40°C); 1°C/1.8°F (Other)
Sensor	Built-in NTC
Storage capacity	16000points (Max)
Logging life	6,15,30,60,90,120,180days (customized)
Alarm Type	single (Sin), accumulative (Cum)
Data Transport	USB 2.0/ NFC
Report Type	PDF Report
Power Type	Built-in CR2450 lithium battery
Battery Life	2 years
Protection Class	IP67

Single-Use GSM Data Logger

Glog 2

Overview

Glog 2 is a single-use data logger that records real-time temperature, position and illumination. Quickly started by pulling out battery insulator strip that ensure logistics efficiency and quality.

Functions

- Easy to activate, quickly create shipments for monitoring
- Check temperature and position in real-time through S/N
- Light sensor to determine violation door opening operations during transportation
- Auto email alert in case of over temperature limit
- Download PDF and Excel report from Elitech Glog
- Battery rechargeable, shelf life up to 2 years



Technical Specifications		
Temperature Measurement Range	-30°C to 55°C	Resolution: 0.1°C
Accuracy	0.5°C/0.9°F (-20°C~40°C) ; 1°C/1.8°F (others)	
Sensor	Internal NTC temperature sensor and light sensor	
Battery Life ¹	20 days (5 minute logging interval and 60 minute upload interval)	
Start Delay ²	30 minutes (customizable)	
Logging Interval ³	5 minutes (customizable)	
Upload Interval ⁴	60 minutes (customizable)	
Shelf Life	1 year stored at room temperature	
Storage Temperature	+15°C~30°C	
Protection Grade	IP65	

1. Battery Life: The estimated operation days of the logger(based on certain conditions).

2. Start Delay: After start delay time elapses, the activated logger will start logging.

3. Logging Interval: The interval between two readings after the logger starts logging.

4. Upload Interval: The interval between two readings that being uploaded to the Cloud.



World Health Organization

WHO PQS E006/083



LogEt 1



LogEt 1 TH

Technical Specifications	LogEt 1	LogEt 1 TH
Recording Options	Single-Use	Single-Use
Temperature Range	-30 C to 70 C	-30 C to 70 C
Humidity Range	-	0-100% RH
Temperature Accuracy	±0.5 °C	±0.5 °C (-20 °C/+40 °C);±0.5 °C (other range)
Humidity Accuracy	-	±3%RH(25 °C,20%RH to 80%RH);±5%RH(other range)
Resolution	0.1 °C	0.1 °C,0.1%RH
Data Storage Capacity	16,000 readings	16,000 readings
Shelf Life/Battery	2 years'/CR2450 button cell	2 years'/CR2450 button cell
Recording Interval	12 minutes(standard, others on request)	12 minutes(standard, others on request)
Recording Duration	up to 120 days²(standard, others on request)	up to 120 days²(standard, others on request)
Reprogrammable	With free Elitech Win or MAC software	With free Elitech Win or MAC software
Startup Mode	Button or software	Button or software
Stop Mode	Button, software or stop when full	Button, software or stop when full
Protection Class	IP67	NONE
Certifications	FDA EN12830, CE, RoHS	FDA EN12830, CE, RoHS

1.Dependent on optimal storage conditions(15 °C to 23 °C/45% to 75% RH)

2.Dependent on application temperature(very low/ high temperatures may shorten it)

1.Dependent on optimal storage conditions(15 °C to 23 °C/45% to 75% RH)

2.Dependent on application temperature(very low/ high temperatures may shorten it)

Single-Use Data Logger

LogEt 1 Series

Single Use

Overview

LogEt 1 series are temperature/humidity data loggers with LCD display that can be used in pharmaceutical packages or cooler boxes. The loggers feature a light sensor that can be useful for determining violation door opening operations during transportation and verifying the safety and efficiency for pharmaceutical cold chain logistics.

Features

- High-precision temperature/humidity sensor, accuracy heightened to ±0.5 °C, 3%RH
- LCD screen for more powerful and intuitive indication
- 3. Configuration through free software ElitechLog and cloud platform Elitech iCold
- Light sensor to determine violation door opening operations during transportation
- Auto encrypted PDF report with password protection function
- Built-in USB port allows quick access to PCs and ElitechLog software
- Battery life up to 180 days, shelf life up to 2 years
- Up to IP67 waterproof grade(Except LogEt 1 TH)
- Complies with CE (EN12830), RoHS and FDA (21CFR)

Multi-Use Data Logger

Tlog 10 series

Overview

Elitech Tlog 10 series data loggers are used to monitoring and recording the temperature (humidity) for foods, pharmaceuticals, and other products during storage and transport, and in each stage of cold chain logistics, such as refrigerated containers, trucks, cooling cabinets, medical cabinets, freezers, and laboratories.

This data logger features a USB port, LCD screen and two buttons designed to prevent accidental touches. You can view device status and parameters by button press, or customize various parameters, multiple thresholds, storage modes, etc. The PDF report can be automatically generated without extra software installed.

Features

- From -40℃~85℃ Temperature Measurement Range with ±0.5℃ Accuracy
- Professional software for programming the logger and data analysis
- Stores up to 32,000 recorded readings onto internal memory
- Easily generates PDF reports.
- Battery life up to 2 years

Technical Specifications

Model	Tlog 10	Tlog 10E	Tlog 10H	Tlog 10EH
Sensor Type	Internal Temperature	External Temperature	Internal Temperature and Humidity	External Temperature and Humidity
Temperature Range	-30℃~70℃	-40℃~85℃	-30℃~70℃	-40℃~85℃
Humidity Range	/	/	0~100% RH	0~100% RH
Data Interface	USB	USB	USB	USB
Accuracy	±0.5℃ (-40℃~85℃); ±3%RH (25℃: 20%~80%), ±5%(others)			
Resolution	Temperature: 0.1℃ Humidity: 0.1%RH			
Memory	32000 points (MAX)			
Logging Interval	10s ~ 24h			
Report Type	PDF format			
Battery	CR2450 3.0V wide-temperature button cell			
Battery Life	2 years for storage and use; Cumulatively 180 days at 10 min logging interval			
Protection Level	IP65			



Multi-Use Data Logger

LogEt 8 Life Science Series

Overview

The LogEt 8 Life Science Series are ultra-high precision temperature and humidity data loggers that can be used for thoroughly monitoring the quality and safety of sensitive goods' during transportation or storage, which helps users make decisions to accept or reject goods immediately.

Features

- High-precision temperature/humidity sensor, accuracy heightened to ±0.3℃, ±3%RH
- Internal/external sensor with multiple combinations, applicable to various scenarios
- Software-free, online website configuration for various parameters
- Auto encrypted PDF report with password protection function
- Built-in USB port allows quick access to PCs and ElitechLog software
- Up to 7 alarm thresholds configurable
- IP65 rating
- 2-year lifespan of battery in Normal-temperature
- Compliance with CE (EN12830), RoHS and FDA (21CFR)

Technical Specifications

	LogEt 8TH	LogEt 8 TE	LogEt 8THE	LogEt 8 PTE	LogEt 8 UTE
Recording Options	Multi-Use	Multi-Use	Multi-Use	Multi-Use	Multi-Use
Temperature Range	-30℃ to 70℃	-40℃ to 85℃	-40℃ to 85℃	-85℃ to 150℃	-196℃ to 150℃
Humidity Range	0-100% RH	—	0-100% RH	—	—
Temperature Accuracy	±0.3℃ (-20℃/+40℃); ±0.5℃ (other range)	±0.3℃ (-20℃/+40℃); ±0.5℃ (other range)	±0.3℃ (-20℃/+40℃); ±0.5℃ (other range)	±0.3℃ (-20℃/+40℃); ±0.5℃ (-50℃/+85℃); ±1℃ (other range)	±0.3℃ (-20℃/+40℃); ±0.5℃ (-50℃/+85℃); ±1℃ (-100℃/+150℃) ±2℃ (other range)
Humidity Accuracy	±3%RH (25℃, 20%RH to 80%RH), ±5%RH (other range)	—	±3%RH (25℃, 20%RH to 90%RH), ±5%RH (other range)	—	—
Resolution	0.1℃, 0.1%RH	0.1℃	0.1℃, 0.1%RH	0.1℃	0.1℃
Data Storage Capacity	16,000 readings				
Shelf Life/Battery	2 years ¹ /ER14250 3.6V lithium battery				
Recording Interval	10 minutes (standard, others on request)				
Software	PDF /ElitechLog Win or Mac (latest version)				—
Report Generation	Automatic PDF report				—
Password Protection	Optional on request				
Alarm Configuration	Optional, up to 5 points				
Reprogrammable	With free Elitech Win or MAC software				
Startup Mode	Button or software				
Stop Mode	Button, software or stop when full				
Protection Class	IP65				
Certifications	FDA EN12830, CE, RoHS				

1. Depending on optimal storage conditions (15℃ to 23℃ / 45% to 75% RH)

Multi Use

Bluetooth Multi-Use Data Logger LogEt 8 BLE

Overview

The LogEt 8 BLE temperature data logger deploys Bluetooth® Low Energy (BLE) technology that allows remote access and manages data logger outside the package or vehicle through Elitech App.

Functions

- Bluetooth® access data logger outside the package anytime anywhere, no pairing required
- Auto encrypted PDF report with password protection function
- Built-in USB port allows quick access to PCs and ElitechLog software
- Multiple configuration, downloading, management and sharing via Elitech app (iOS/Android)
- Unlimited storage on Elitech Cloud
- Compliance with CE (EN12830), RoHS, BQB and FDA (21CFR)

Technical Specifications	
Recording Options	Multi-Use
Temperature Range	-30 °C to 70 °C
Temperature Accuracy	±0.3 °C (all range)
Temperature Resolution	0.1 °C
Data Storage Capacity	16,000 readings
Shelf Life/Battery	2 years/ER14250 3.6V lithium battery
Recording Interval	10 minutes(standard, others on request)
Software	PDF /ElitechLog Win or Mac (latest version)
Report Generation	Automatic PDF report
Password Protection	Optional on request
Connection Interface	USB 2.0, A-Type, bluetooth
Alarm Configuration	Optional, up to 5 points
Reprogrammable	Elitech APP & Elitechlog
Startup Mode	Button or software
Stop Mode	Button, software or stop when full
Protection Class	IP65
Certifications	FDA EN12830, CE, RoHS

1.Dependent on optimal storage conditions(15 °C to 23 °C/45% to 75% RH)



GSP-8

GSP-6

GSP-6G

Overview

GSP-6 series are temperature and humidity data loggers featured with large display and optional glycol bottle. Its dual probe accessories support multiple combination options of temperature and humidity. Employs with multiple alerting methods and shorten logging intervals automatically, it avoids over-limits. Elitech outstanding ElitechLog software services on PC by setting 2 temperature/humidity alarm thresholds, viewing temperature/humidity history data, exporting detailed data report, etc.

Technical Specifications	GSP-6/6G	GSP-8
Recording Options	Multi-Use	Multi-Use
Temperature Range	-40 °C ~85 °C	-20 °C ~60 °C (internal sensor); -40 °C ~85 °C (external probe)
Humidity Range	0~100% RH	0~100% RH
Temperature Accuracy	±0.5 °C (-20 °C/+40 °C); ±1.0 °C (other range)	±0.3 °C (-20 °C/+40 °C); ±0.5 °C (others)
Humidity Accuracy	±3%RH(25 °C,20%RH to 90%RH); ±5%RH(other range)	±3%RH(25 °C,20%RH to 90%RH); ±5%RH(others)
Resolution	0.1 °C, 0.1%RH	0.1 °C, 0.1%RH
Data Storage Capacity	16,000 points	100,000 points
Shelf Life/Battery	2 years' ER14505	Rechargeable 18650 lithium battery
Recording Interval	15 minutes(standard, others on request)	15 minutes(standard,others on request)
Alarm Configuration	Optional, only 2 points	Optional, up to 5 points
Reprogrammable	With free Elitech Win or MAC software	Auto PDF report,PDF/EXCEL/TXT by ElitechLog software
Stop Mode	Button, software or stop when full	Button,software or stop when full
Certifications	FDA EN12830, CE, RoHS	FDA EN12830, CE, RoHS

Multi-Use Data Logger Vaccine Mornitoring GSP-6/6G/8

Multi Use

Features

- Internal temperature and humidity sensor, accuracy up to ±0.5 °C, ±3%RH
- Built-in USB port allows quick access to PCs and ElitechLog software
- Large LCD display convenient for data view from a distance
- Various alerting modes as Audio-visual alarm, screen indicator alarm and etc
- Shorten logging interval automatically when temperature and humidity alarm triggered
- Optional glycol bottle as thermal buffer could reflect more accurate and stable readings
- Powered by battery or USB connection
- Compliance with CE (EN12830), RoHS and FDA (21CFR)

Multi-Use Data Logger

RC-51 Series

Overview

RC-51 series are Elitech conventional USB temperature/humidity data loggers. Its special pen style design features with high protection class of IP67 rating.

Features

- Internal temperature/humidity sensor, accuracy up to $\pm 0.5^{\circ}\text{C}$ /3%RH
- Auto encrypted PDF report with password protection function
- Built-in USB port allows quick access to PCs and ElitechLog software
- Powerful and intuitive indication with LCD screen and dual LED indicators
- Up to 32,000 data points memory capacity for temperature/humidity
- Up to 7 alarm thresholds configurable
- Compliance with CE (EN12830), RoHS and FDA (21CFR)

Technical Specifications	RC-51	RC-51H
Recording Options	Multi-Use	Multi-Use
Temperature Range	-30 °C to 70 °C	-30 °C to 70 °C
Humidity Range	-	10% ~ 95%
Temperature Accuracy	$\pm 0.5^{\circ}\text{C}$ (-20 °C /+40 °C); $\pm 1.0^{\circ}\text{C}$ (other range)	$\pm 0.5^{\circ}\text{C}$ (-20 °C /+40 °C); $\pm 1.0^{\circ}\text{C}$ (other range)
Humidity Accuracy	-	$\pm 3\%\text{RH}$ (25 °C,20%RH to 90%RH), $\pm 5\%\text{RH}$ (other range)
Resolution	0.1 °C	0.1 °C,0.1%RH
Data Storage Capacity	32,000 readings	32,000 readings
Shelf Life/Battery	2 years'/ER14250 button cell	2 years'/ER14250 button cell
Recording Interval	15 minutes(standard, others on request)	15 minutes(standard, others on request)
Validation Certificate	Hardcopy	Hardcopy
Report Generation	Automatic PDF report	Automatic PDF report
Alarm Configuration	Optional, up to 5 points	Optional, up to 5 points
Reprogrammable	With free Elitech Win or MAC software	With free Elitech Win or MAC software
Startup Mode	Button or software	Button or software
Stop Mode	Button, software or stop when full	Button, software or stop when full
Protection Class	IP67	-
Certifications	FDA EN12830, CE, RoHS	FDA EN12830, CE, RoHS

IP67



RC-51



RC-51H

Cold Box Mate



RC-5



RC-5+



RC-5+ TE

Features

- Internal temperature sensor, accuracy up to $\pm 0.5^{\circ}\text{C}$
- Built-in USB port allows quick access to PCs and ElitechLog software
- LCD display with powerful indications on status and statistics
- Up to 32,000 points memory capacity
- IP67 rating
- Compliance with CE (EN12830), RoHS and FDA (21CFR)

RC-5+ Upgraded Functions:

- Auto encrypted PDF report with password protection function
- Quick restart without re-configuration
- Up to 5 alarm thresholds configurable
- External temperature sensors (optional)
- Compliance with CE(EN12830), RoHS, DO-160G and FDA (21CFR)

Multi-Use Data Logger

RC-5+ Series

Overview

RC-5 is Elitech conventional USB temperature data logger that is widely used all over the world in various fields.

RC-5+ is the upgraded version with automatic generation of PDF report, repeat start functions and etc.

Technical Specifications

Recording Options	Multi-Use
Temperature Range	-30 °C to 70 °C
Temperature Accuracy	$\pm 0.5^{\circ}\text{C}$ (-20 °C /+40 °C); $\pm 1.0^{\circ}\text{C}$ (other range)
Temperature Resolution	0.1 °C
Data Storage Capacity	32,000 readings
Shelf Life/Battery	1 year'/CR2032 button cell (RC-5+)
Recording Interval	3 minutes(standard) (RC-5+)
Validation Certificate	Hardcopy
Report Generation	Automatic PDF report (RC-5+)
Password Protection	Optional on request
Alarm Configuration	Optional, up to 5 points (RC-5+)
Reprogrammable	With free Elitech Win or MAC software
Startup Mode	Button or software
Stop Mode	Button, software or stop when full
Protection Class	IP67

Certifications FDA EN12830, CE, RoHS

1.Dependent on optimal storage conditions(15 °C to 23 °C /45% to 75% RH)

Multi
Use

Multi-Use Data Logger
RC-4 Series



Overview

RC-4 series are Elitech conventional temperature/humidity data loggers, support external temperature sensor and buzzer alarms. This series is world-wide remote access to various applications like life sciences, food, shipping, logistics, and pharmaceutical industries.

Features

- Internal temperature/humidity sensor, accuracy up to $\pm 0.5^{\circ}\text{C}$, $\pm 3\%\text{RH}$
- Double alarm thresholds configurable with buzzer alarm notification
- USB cable included, no reader required to connect with PC and ElitechLog software
- External temperature sensors applicable to various scenarios (optional)
- Wall-mounted in various locations with multiple mounting hardware(optional)
- Compliance with CE (EN12830), RoHS and FDA (21CFR)

Technical Specifications		RC-4	RC-4HC
Recording Options	Multi-Use	Multi-Use	
Temperature Range		-30°C to 60°C (Internal sensor) -40°C to 85°C (optional external sensor)	-30°C to 60°C (Internal sensor) -40°C to 85°C (optional external sensor)
Humidity Range	-		0 - 100% RH
Temperature Accuracy		$\pm 0.5^{\circ}\text{C}$ (-20°C/+40°C); $\pm 1.0^{\circ}\text{C}$ (other range)	$\pm 0.5^{\circ}\text{C}$ (-20°C/+40°C) $\pm 1.0^{\circ}\text{C}$ (other range)
Humidity Accuracy	-		$\pm 3\%\text{RH}$ (25°C,20%RH to 90%RH) $\pm 5\%\text{RH}$ (other range)
Resolution	0.1°C		0.1°C,0.1%RH
Data Storage Capacity	16,000 readings		16,000 readings
Shelf Life/Battery	1 year/CR2450 button cell		1 year/CR2450 button cell
Recording Interval	15 minutes(standard, others on request)		15 minutes(standard, others on request)
Report Generation	PDF&Excel report by Elitech software		PDF&Excel report by Elitech software
Alarm Configuration	Optional, only 2 points		Optional, only 2 points
Reprogrammable	With free Elitech Win or MAC software		With free Elitech Win or MAC software
Startup Mode	Button		Button
Stop Mode	Button, software or stop when full		Button, software or stop when full
Certifications	FDA EN12830, CE, RoHS		FDA EN12830, CE, RoHS

RC-4

1.Dependent on optimal storage conditions(15°C to 23°C/45% to 75% RH)

RC-4HC

1.Dependent on optimal storage conditions(15°C to 23°C/45% to 75% RH)

Elitech Products & Features Matrix	Key Sensor: I=Internal E=External Battery: F=Fixed R=Replaceable/ Rechargeable	Main Features				Type			Memory		Connectivity				Other Features							
		Temperature Measurement Range	Humidity Measurement Range	Sensor	Battery	Temperature Accuracy ±0.5°C (-20°C/+40°C) ±1.0°C (other range)	Humidity Accuracy ±3%RH(25°C, 20%RH to 90%RH) ±5%RH (other range)	Resolution	~100,000 Logs	~32,000 Logs	~16,000 Logs	USB Connector	4G Connectivity	Wifi Connectivity	NFC	Bluetooth Connectivity	Cloud	Elitechlog	Auto PDF	LCD Display	Buzzer	Password Protection
Multi-Use Data Loggers		Product Model																				
Temperature internally	RC-4	-40° to +85°C		E	R	✓		0.1°C			✓	✓					✓		✓	✓		
Temperature and Humidity internally	RC-4HC	-40° to +85°C	0-100%RH	E	R	✓	✓	0.1°C 0.1%RH			✓	✓					✓		✓	✓		
Temperature internally	RC-5	-30° to +70°C		I	R	✓		0.1°C		✓		✓					✓		✓			
Temperature internally	RC-5+	-30° to +70°C		E	R	✓		0.1°C		✓		✓					✓	✓	✓		✓	
Temperature internally	RC-5I	-30° to +70°C		I	R	✓		0.1°C		✓		✓					✓	✓	✓		✓	
Temperature and Humidity internally	RC-5IH	-30° to +70°C	10-95%RH	I	R	✓	✓	0.1°C 0.1%RH	✓			✓					✓	✓	✓		✓	
Temperature and Humidity external	GSP-6	-40° to +85°C	0-100%RH	E	R	✓	✓	0.1°C 0.1%RH			✓	✓					✓		✓	✓		
external-85°C	LogEt 8 PTE	-95° to +150°C		E	R	±0.3°C		0.1°C			✓	✓					✓	✓	✓		✓	
Temperature internally	LogEt 8 BLE	-30° to +70°C		I	R	±0.3°C		0.1°C			✓				✓	PDF file	✓	✓	✓		✓	
Temperature External	Tlog 10E	-40° to +85°C		E	R	±0.3°C	✓	0.1°C		✓		✓					✓	✓	✓			
Tem & Hum External	Tlog 10EH	-40° to +85°C	0-100%RH	E	R	±0.3°C	✓	0.1°C 0.1%RH		✓		✓					✓	✓	✓			
Single-Use Data Loggers																						
Temperature internally	RC-19	-30° to +70°C		I	F	✓		0.1°C				✓	✓				✓	✓				
Temperature	RC-17	-30° to +70°C		I	F	✓		0.1°C				✓	✓				✓	✓				
Temperature NFC	RC-17N	-30° to +70°C		I	F	✓		0.1°C				✓	✓		✓		✓	✓			✓	
Temperature internally	LogEt 1	-30° to +70°C		I	F	✓		0.1°C				✓	✓				✓	✓	✓		✓	
Temperature internally	LogEt 1TH	-30° to +70°C	0-100%RH	I	F	±0.3°C	✓	0.1°C 0.1%RH				✓	✓				✓	✓	✓		✓	
Real Time Data Loggers																						
Temperature and Humidity external	RCW-360 THE	-40° to +80°C	10-95%RH	E	R	✓	±5%RH	0.1°C		✓				✓		✓			✓	✓		
Temperature and Humidity internally	RCW-360TH	-20° to +70°C	10-95%RH	I	R	✓	±5%RH	0.1°C 0.1%RH		✓				✓		✓			✓	✓		
Temperature and Humidity internally	RCW-360P-TH	-20° to +60°C	0-100%RH	I	R	✓	±5%RH	0.1°C 0.1%RH	✓				✓			✓			✓	✓		
Temperature and Humidity external	RCW-360P-THDE	-40° to +80°C	0-100%RH	E	R	✓	±5%RH	0.1°C 0.1%RH	✓				✓			✓			✓	✓		
Temperature and Humidity external	RCW-800 W	-40° to +80°C	0-100%RH	E	R	✓	±5%RH	0.1°C 0.1%RH	20,000					✓		✓			✓	✓		

Product Model Features Key

Elitech dataloggers are named using the naming conventions below. Please note that these features may not be accurate, so please to check the product specifications before purchase.

T	Temperature	H	Humidity
I	Internal Sensor	E	External Sensor
R	Replaceable/Rechargeable	F	Fixed Battery
D	Display	WIFI	WIFI Enabled
U	USB		