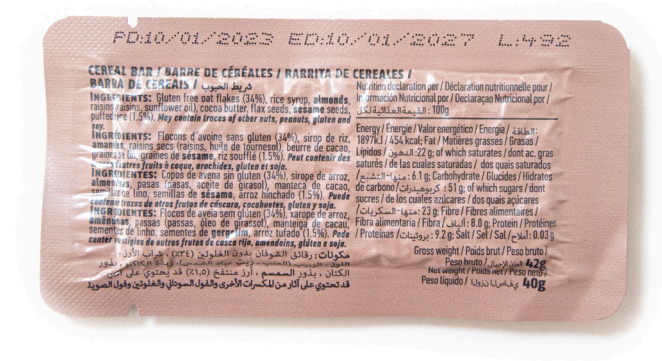


# CEREAL BAR



## TRACEABILITY

Batch, DOP and BBE information marked on sachet one side sealing.  
**Batch:** L: XXXXXXX  
**Date of production (DOP):** dd/mm/yyyy  
**Best Before End (BBE):** dd/mm/yyyy

PHYSICO-CHEMICAL CRITERIA					
Moisture	Ash	Aflatoxin B1	Total Aflatoxins	Ochratoxina	Acrylamide
< 8 %	1,82 %	≤ 12 %	≤ 10 ppb	≤ 3 ppb	150 µg /kg

## ORGANOLEPTIC CHARACTERISTICS

**Texture:** Firm and flexible  
**Flavor:** Characteristic  
**Smell:** Characteristic  
**Colour:** Characteristic

**DESCRIPTION** Cereal bar made by pressing cereals and dried fruit, which are held together by rice syrup and cocoa butter.

**INGREDIENTS** Gluten free oat flakes (34%), rice syrup (25%), almonds (12%), raisins (raisins, sunflower oil) (9%), cocoa butter (6%), flax seeds (6%), **sesame** seeds (6%), puffed rice (2%).

**PRODUCT ORIGIN** EU (Spain).

**SHELF LIFE** Minimum 36 months from production date.

**USE INSTRUCTIONS** Consume once opened.

**STORAGE AND TRANSPORT CONDITIONS** Keep in a cool, dry place.

## PACKAGING

**Net weight:** 40g  
**Gross weight:** 42g  
**Material:** PETmate (12µm)/ PETmet (12µm)/ LDPE TR (90µm).  
**Colour:** Pantone 4725C. Texts in black.

## MICROBIOLOGICAL CRITERIA

**Salmonella spp:** Absence in 25 g  
**Listeria monocytogenes:** < 100 cfu/g

NUTRITION DECLARATION		ALLERGEN DECLARATION	
	100 g		
Energy	1897 kJ / 454 kcal	T Cereals containing gluten and products thereof	Celery and products thereof
Fat	22 g	Crustaceans and products thereof	Mustard and products thereof
of which saturates	6.1 g	Eggs and products thereof	x Sesame and products thereof
Carbohydrates	51 g	Fish and products thereof	Sulphur dioxide and sulphites at concentrations of more than 10 mg/kg or 10 mg/litre in terms of the total SO <sub>2</sub> .
of which sugars	23 g	T Peanuts and products thereof	Lupin and products thereof
Fibre	8 g	T Soybeans and products thereof	Molluscs and products thereof
Protein	9.2 g	Milk and products thereof	x Contain allergen
Salt (Sodium)	0.03 g (0.01 g)	x Nuts and products thereof	T May contain traces

## APPLICABLE LEGISLATION

Product complies with the applicable European Regulations and CODEX ALIMENTARIUS guidelines on food safety.

Review	Date	Modification	Approved by
3	09/2023	Updating of technical sheets	Dept. Product development

**Office**  
P. I. RIODEL - C/ Moli Nou s/n  
03110 - Mutxamel  
Alicante (Spain)

**Mail Address**  
P.O. Box 142  
03110 - Mutxamel  
Alicante (Spain)

**www.jomipsa.com**  
info@jomipsa.es  
T. (+34) 965 657 135  
F. (+34) 965 650 205

Jomipsa has management systems in place that are certified by Bureau Veritas in accordance with the requirements of the following Standards:  
**ISO9001** – Quality Management Systems  
**ISO 14001** – Environmental Management Systems  
**FSSC 22000**– Food Safety Management Systems