



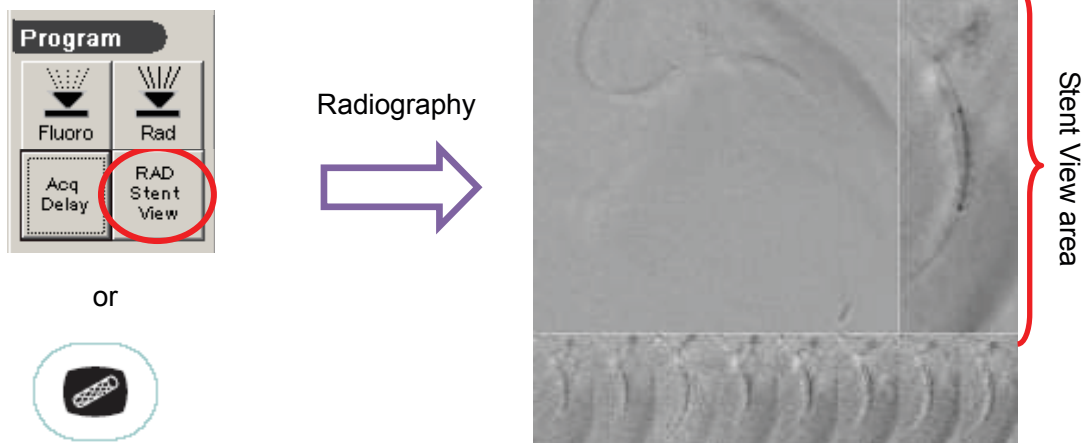
## SCORE StentView+Plus

### •Operation of StentView radiography

Click [RAD Stent View] on side menu, and press radiography switch (foot switch or hand switch).

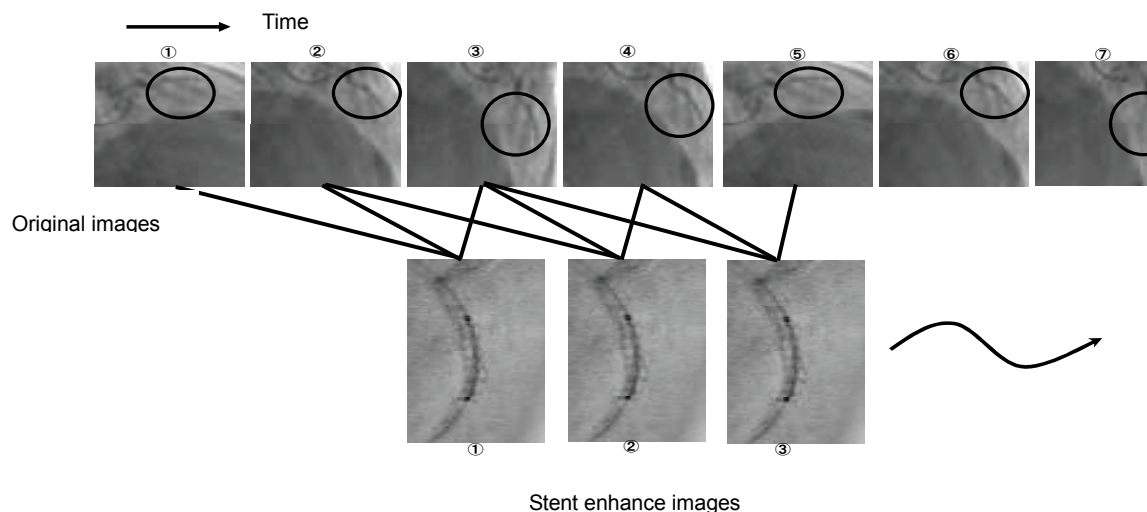
The image viewer consists of three areas. Stent View area fixes the marker position.

(It returns to the normal radiography program automatically. If you want to continue Stent View radiography, click [RAD Stent View] again.)



### •The principle of StentView processing

StentView images are created by detecting moving area and two markers in multiple acquired images.



[Note] As StentView is created by integrating a number of frames, it cannot obtain correct results if the table, C-arm and devices move during StentView radiography.

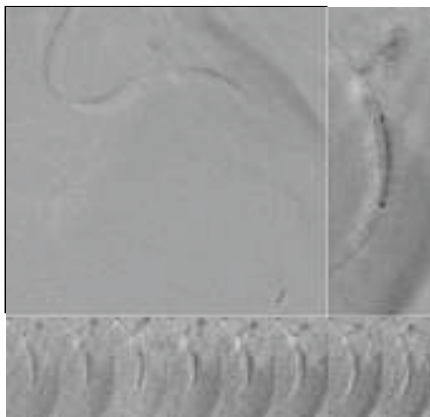
- When the marker detection fails,  
Please take a measure against each cause.

Cause	Measures
The distance between the markers is too short. ※1	Select smaller FOV to magnify the distance between the markers. (ex. 6"→4.5")
There are some frames that the markers are out the area of StentView processing. ※2	Move a table so that the markers are in the area of StentView processing.
Other objects (noise, device) are detected.	Exclude other objects. (Collimation or moving a table.) Or use a ROI StentView function. ※3
The markers move too fast. (Heart-rate is too high.)	Raise RAD frame rate. (ex. 15fps→30fps)
Insufficient contrast caused by deep C-arm angle.	Try shallow angle.

※1 When using balloon length is less than 8mm, it is better to change FOV to 4.5".

※2 Edge (about 1cm) of Dynamic View area is out of StentView processing!

(to reduce processing time)

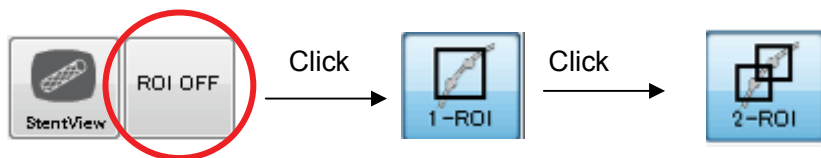


If a marker is in this area, StentView image processing cannot be applied. Please try to move all markers to the center as much as possible.

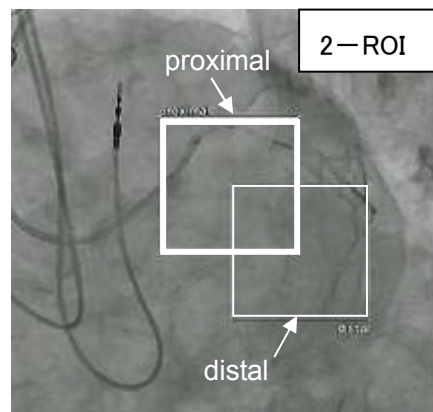
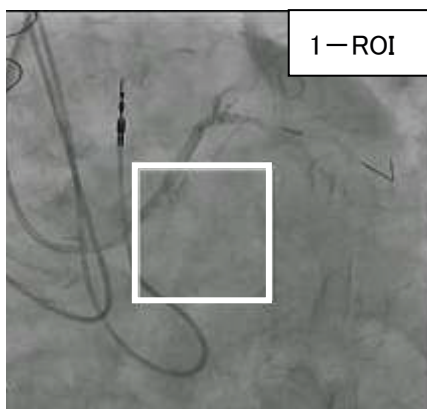
### ※3 How to use ROI StentView

Only one is displayed ROI on a **ACQ. monitor** when you click one time of [ROI] icon.

If you click icon again, ROI two are displayed. (Proximal, Distal)

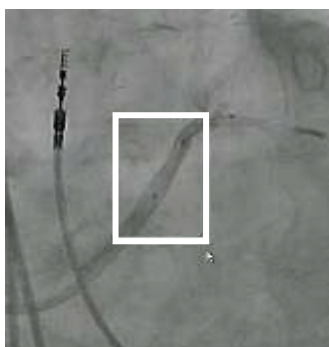


(It is possible to assign that [1-ROI], [2-ROI] button to the IVR-Neo and function keys.)



Last 2sec. fluoro (or Rad) image is replayed on the ACQ. monitor.

Please set the ROI position and size to surround markers by using a mouse (or IVR-Neo) in a **moving image**.



If you step a foot switch after setting the ROI, the StentView acquisition starts.

※If a C-arm angle, SID and bed height is never changed, it retains the ROI position and size.

