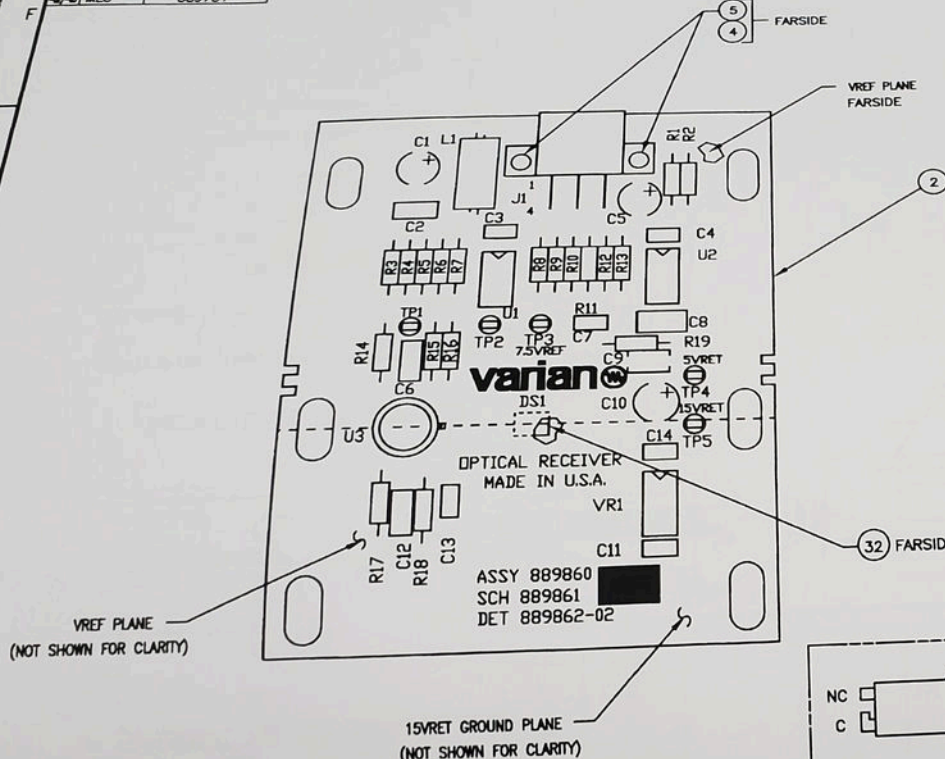
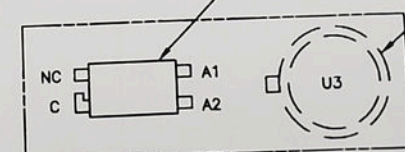


ITEM NO.	TYPE OF MOUNT	NEXT ASSEMBLY
2	MLC 360301	889632
3	MLC	889609
4	MLC	889781



COMPONENT SIDE VIEW



SOLDER SIDE VIEW

REF	DES	QTY	PART NUMBER	DESCRIPTION OR MATERIAL	ITEM
1	1	1	889861	SCHEM. PCB, OPTICAL RECEIVER	1
2	1	1	889862-02	DETAIL, PCB, OPTICAL RECEIVER	2
3	1	1	889864	CIRCUIT DESCRIPTION	3
4	2	2	12-221104-05	SCREW, PHN, 4-40 X 5/16, STL	4
5	2	2	14-999702	WASHER, FLAT, #4, NYLON	5
6	2	2	31-102213	RESISTOR, MF, 1K, 1/4W, 1%	6
7	2	2	31-102242	RESISTOR, MF, 2K, 1/4W, 1%	7
8	2	2	31-102309	RESISTOR, MF, 10K, 1/4W, 1%	8
9	2	2	31-102317	RESISTOR, MF, 12K, 1/4W, 1%	9
10	2	2	31-102338	RESISTOR, MF, 20K, 1/4W, 1%	10
11	2	2	31-102462	RESISTOR, MF, 392K, 1/4W, 1%	11
12	1	1	31-102504	RESISTOR, MF, 1.24M, 1/4W, 1%	12
13	1	1	31-102523	RESISTOR, MF, 6.04M, 1/4W, 1%	13
14	4	4	31-102531	RESISTOR, MF, 10M, 1/4W, 1%	14
15	1	1	41-119992	CAPACITOR, MICA, 20pF, 300V, 5%	15
16	2	2	41-119993	CAPACITOR, MICA, 10pF, 300V, 5%	16
17	1	1	41-229851	CAPACITOR, CER, 22uF, 50V, 10%	17
18	1	1	41-229963	CAPACITOR, CER, 0.1uF, 100V, 10%	18
19	3	3	41-609455	CAPACITOR, TANT, 10uF, 35V, 10%	19
20	6	6	41-709331	CAPACITOR, CER, .1uF, 50V, 20%	20
21	1	1	43-226000	INDUCTOR	21
22	1	1	51-190324	CONN., 6 PIN, RIGHT ANGLE	22
23	5	5	51-451872	TEST POINT, BLK	23
24	1	1	62-601775	IC., LM393N	24
25	1	1	62-602669	IC., AD647LH	25
26	1	1	62-602741	IC., AD584JN	26
27	1	1	62-604115	IC., AD647KH	27
28	1	1	65-601064	IC., BPX48F	28
29	1	1	66-599911	IC., HCPL2731	29

REVISION BLOCK		
DES	DWG. NO.	REV.
DETAIL	889862-02	B
SCHEM	889861	A

- NOTES:
1. ASSEMBLY SHALL BE IN ACCORDANCE WITH ASSEMBLY SPEC 838105.
 2. HAND SOLDER ITEM 29 AND ITEM 32 AFTER WAVE SOLDER.
 3. U3 TO BE MOUNTED .10 INCH OFF THE BOARD.

DO NOT SCALE DRAWING			
REVISION	DESCRIPTION	DATE	BY
1	ISSUED	7/20/92	MC NIVEN
2	CHANGED	8/18/92	T. PAPPAS

ASSY, PCB, OPTICAL RECEIVER			
DATE	APPROVED	DATE	APPROVED
7/20/92	JOE CO	8/18/92	JOE CO
8/18/92	R. YOST	1/20/93	R. YOST

varian oncology systems