


Vasofix® Safety

Product overview

Vasofix® Safety	Gauge	Catheter length		Catheter ø (mm)	Flow rate (ml / min)	Units per box	Code no. REF	
		(inch)	(mm)				FEP*	PUR*
	24	3/4	19	0.70	22	50	-	4269071S-01
	22	1	25	0.90	36		4268091S-01	4269098S-01
	20	1	25	1.10	65		-	4269217S-01
	20	1 1/4	33	1.10	61		4268113S-01	4269110S-01
	18	1 1/4	33	1.30	103		4268334S-01	4269330S-01
	18	1 3/4	45	1.30	96		4268130S-01	4269136S-01
	17	1 3/4	45	1.50	128		4268156S-01	4269152S-01
	16	2	50	1.70	196		4268172S-01	4269179S-01
	14	2	50	2.20	343		4268210S-01	4269225S-01

* Catheter material.
All products are PVC-, DEHP- and latex/natural rubber-free

Literature

1.

Tosini W, Ciotti C, Goyer F, Lolom I, L'Heriteau F, Abiteboul D, et al. Needle-stick Injury Rates According to Different Types of Safety-Engineered Devices: Results of a French Multicenter Study. Infect Control Hosp Epidemiol. 2010 Apr;31(4):402-7.
2.

Suzuki T, Fukuyama H, Nishiyama J, Oda M., Takahashi M. Differences in Penetration Force of Intravenous Catheters: Effect of Grinding Methods on Inner Needles of Intravenous Catheters. Tokai J Exp Clin Med. 2004; 29(4): 175-181.
3.

Sossai D. et al. Efficacy of safety catheter devices in the prevention of occupational needlestick injuries: applied research in the Liguria Region (Italy). J Prev Med Hyg. 2016; 57: E110-E114.
4.

Maki D.G. Ringer M. Risk Factors for infusion-related Phlebitis with Small Peripheral Venous Catheters: A randomized Controlled Trial. Ann Intern Med. 1991 May 15; 114(10):845-54.
5.

Gorski, L. et al. Infusion Therapy: Standards of practice. Journal of Infusion Nursing. 2016; Vol 39 (1S): S72-73.
6.

Schears G. Summary of Product Trials for 10,164 Patients: Comparing an Intravenous Stabilizing Device to Tape. J Infus Nurs. August 2006; 29(4):225-31.
7.

Mensor L. Dirogio D. Souza C. Contadin R. Cost-Effectiveness of safety engineered peripheral catheters with an integrated stabilization platform under the perspective of hospitals in Brazil. BR J of Health Econ. April 2016;18(1):3-10.
8.

Cooper D. Whitfield M.D. Newton D. Chiarella J. Machaczek KK. Introduction of a non-ported peripheral intravenous catheter with multi-use blood control septum offers improvements in the overall efficiency of the procedure and is clinically well accepted. Int. J of Healthcare Techn and Mgmt. January 2016; 1-20.
9.

Moergeli et al. A comparison of first attempt cannulation success of peripheral venous catheter systems with and without wings and injection ports in surgical patients—a randomized trial. BMC Anesthesiology. 2022 (88): 1-11.
10.

Jagger J, Bentley MB. Injuries from vascular access devices: high risk and preventable. Collaborative EPINet Surveillance Group. Journal of Infusion Nursing. 1997 Nov-Dec;20(6 Suppl):S33-9.

Learn more about Vasofix® Safety



Download the handling poster:
Vasofix® Safety – IV catheter



Download the brochure:
Patient access in infusion therapy

Vasofix® Safety

Safety IV catheter with injection port & automatic needlestick protection



Vasofix® Safety

Safety IV catheter with injection port & automatic needlestick protection

Making IV access ...

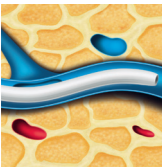
... comfortable for patients

The catheter material assures an easy and smooth catheter advancement for a high patient comfort. Available in **PUR** (polyurethane) for softer, more comfortable, longer in-dwelling performance⁴ and kink resistance, or **FEP** with firmer construction.



Radiopaque stripes

- Radiopaque stripes for good visibility under X-rays



PUR

- Soft at body temperature
- Proven to have positive impact on indwell time and phlebitis risk⁴

... safer for patients

A poorly secured IV catheter poses a risk for IV complications such as dislodgement, infiltration, extravasation or phlebitis. The integrated fixation wings are designed to minimize catheter movement to help reduce catheter-related complications.^{5,6,7}



Fixation wings

- Designed to improve catheter stability
- Flexible wings adapt to skin surface for highest patient comfort
- Holes for ventilation

Removable flash plug & removable closing cone

- Hydrophobic membrane avoids blood exposure
- Removable flash plug permits attachment of a syringe for aspiration and other special procedures
- Removable closing cone allows to directly close off the catheter with one hand

... convenient for patients

The unique geometry of the universal back cut bevel aids in accessing difficult veins by providing a highly flexible pathway for easy catheter insertion with less tearing.²



Universal back cut bevel

- Wide choice of insertion angles
- Designed for minimal puncture trauma²
- Insertion with less tissue tearing (V-cut)²

... safer for clinicians

Needlestick injuries (NSI) continue to be one of the highest risks clinicians face during their daily routine: 62% of NSI occur after use, during disposal.¹⁰ Studies show that passive, fully automatic safety devices are most effective in NSI prevention.^{1,3} With B. Braun's Vasofix® Safety, clinicians are protected by a truly automatic safety device.



Passive safety shield

- Deploys automatically
- Cannot be bypassed
- Requires no use activation

... user-friendly

Designed for a precise medication and a high versatility in intravenous treatment.



Injection port

- For a quick and easy injection without interruption of infusion⁹
- Allows needle-free injection
- Grip edges for an easy opening
- Possibility to close-off injection port to inhibit patient's access by turning the protective cap 180 degrees

... more successful

Multiple attempts to establish an IV access can lead to a delay in treatment. The double flashback technology of Vasofix® Safety helps to support first stick success⁹ through quick visual confirmation that both – needle and catheter – are successfully in the vein.⁸



Needle-flash



Catheter-flash

Double flashback technology

- Supports first stick success⁹
- Needle-flash confirms needle is in the vein
- Catheter-flash confirms catheter placement⁸

... effortlessly adaptable to user needs

Handling flexibility

Unparalleled flexibility is achieved by offering distinct handling and insertion possibilities for diverse needs, a secure hold and precise control.



Grip plate and port



Wings and closing cone



Closing cone and port

Easy to use: No extra steps needed to prepare the catheter for insertion.

Full portfolio

Offering a wide range of gauge sizes (G14–G24) and catheter lengths (19–50mm)

