



# PROXIMA® | PROXIMA® + PROXIMA® 2 | PROXIMA® 2+

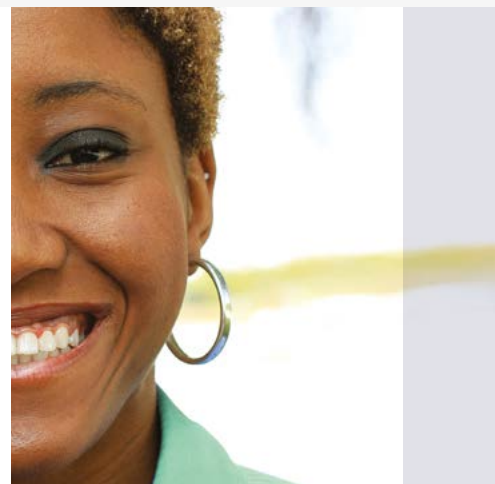
PROVIDING & CONNECTING PEOPLE WITH HIGH QUALITY STANDARDS

# Proxima® | Proxima®+

## Enjoying comfort, fulfilling your needs



### Types of backing material



A complete range to answer patients' needs

<b>1 - Piece</b>	<p>Closed bags beige &amp; transparent</p>		<b>2 - Piece</b>	<p>Closed bags beige &amp; transparent</p>		<p>Uro bags with universal connector</p>	<p>Flat base plate standard</p>	
	<p>Drainable bags beige &amp; transparent with clamps</p>			<p>Drainable bags beige &amp; transparent with clamps</p>				<p>Flat base plate border</p>

### How to apply a 2-Piece system?

1



If you are using a cut-to-fit product, cut the central opening of the hydrocolloid adhesive to the size of your stoma. Apply the base plate over your stoma in a way such that the locking system is located at the top. In order to improve the adhesion, place hands over the wafer to warm it up.

2



Grasp the pouch by the sides. Press the pouch and base plate together starting at the bottom. Run your fingers around the coupling on the outside of the pouch from the bottom to the top.

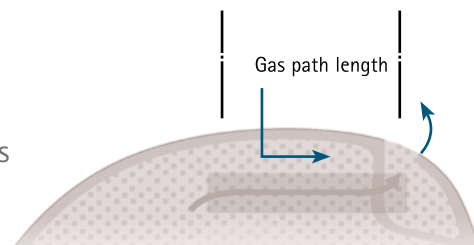
3



When a slight click is felt, the pouch is securely positioned on the base plate. Push the lever down to lock the system. Check that the pouch is securely locked onto the base plate by gently pulling on the pouch.

# Proxima<sup>®</sup> 1-piece & 2-piece Closed Bags for colostomates

- Compact design for optimal comfort and discretion
- Integrated laminar filter - 40mm
  - To reduce odor and bag ballooning
  - Completely integrated to decrease the risk of staining clothes
- Odor proof plastic film
  - For more discretion
- Available in beige for more discretion, and transparent for visual control after surgery
- Cut-to-fit up to 70mm

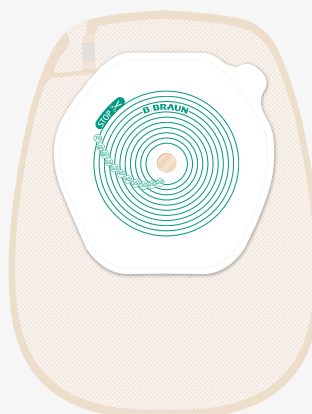


## 1-piece bags



### Proxima<sup>®</sup>

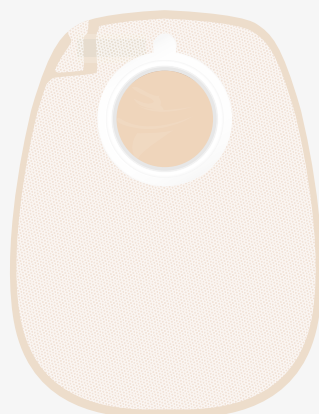
- Washable micro perforated material on the skin side of the bag



### Proxima<sup>®</sup> +

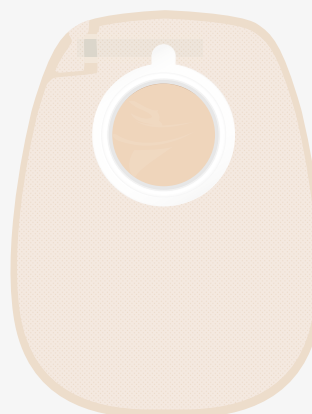
- Soft non-woven material on both sides of the bag

## 2-piece bags



### Proxima<sup>®</sup> 2

- Washable micro perforated material on the skin side of the bag



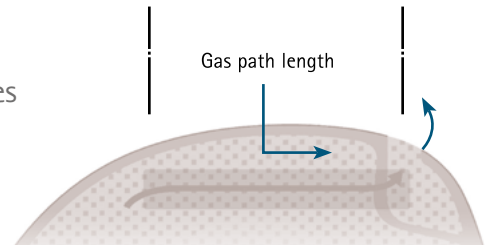
### Proxima<sup>®</sup> 2+

- Soft non-woven material on both sides of the bag

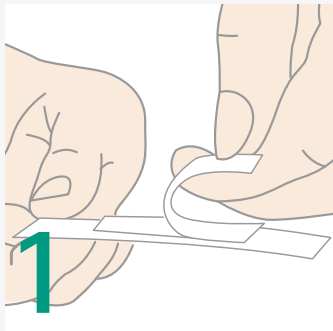
# Proxima<sup>®</sup> 1-Piece & 2-Piece

## Drainable bags for ileostomates and colostomates

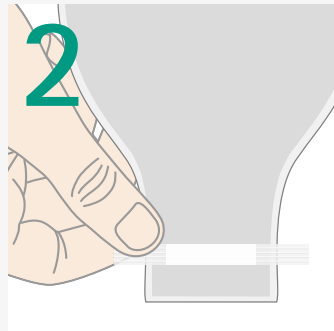
- Integrated laminar filter - 60mm
  - To reduce odor
  - Completely integrated to decrease the risk of staining clothes
  - Available with or without filter
- Large capacity:
  - 650ml for 1-Piece bags & 720ml for 2-Piece bags (ø 60)
- Large drainable outlet - 7cm
  - For ileostomy or colostomy stool evacuation
  - Easier cleaning of the outlet and emptying of the bag
  - Reusable rigid clamp or single use soft adhesive clamp available
- Odor proof plastic film
  - For more discretion



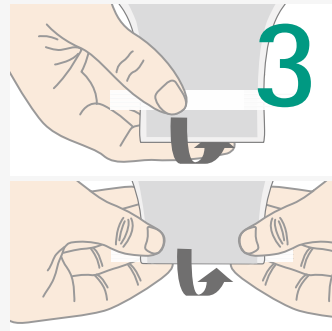
### How to use the soft adhesive clamp?



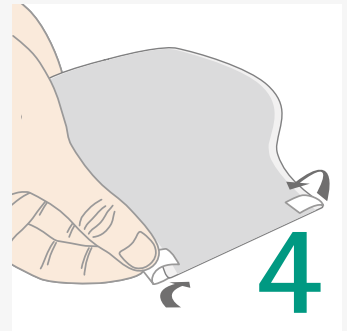
Start by removing the release paper from the adhesive strip. (be careful not to place your fingers on the adhesive part).



Centre and stick the adhesive clamp at the bottom of the opening (on the outer side of the pouch, not on the skin side). The width between the clamp and the bottom of the outlet should be equivalent to the width of the clamp.

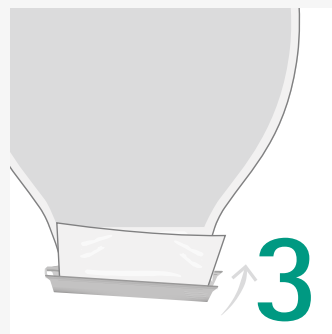
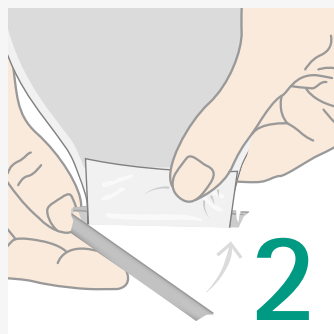
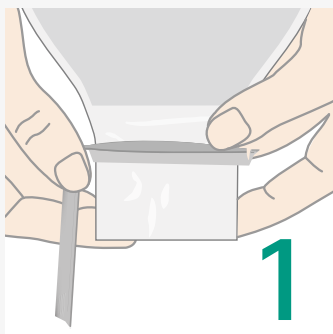


Fold the extremity of the sleeve four times and the outlet backwards using the clamp.



Firmly squeeze the extremities of the clamp to ensure complete closure.

### How to use the rigid clamp?

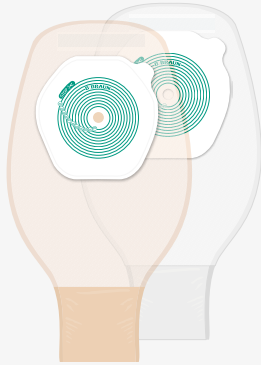


#### Only 3 steps:

1. Open the clamp by pressing on the latch and place the thin curved part of the clamp towards the plastic part of the outlet.
2. Fold the film upwards.
3. Close the clamp.

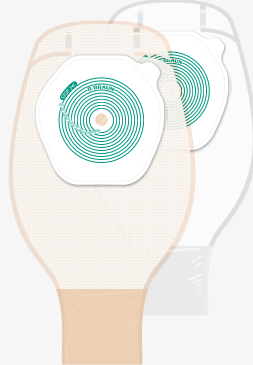
# Drainable bags for ileostomates and colostomates

## 1-piece drainable bags



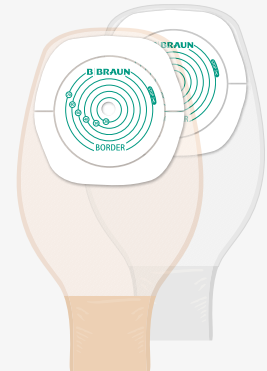
### Proxima®

- 100% hydrocolloid skin protector
- Washable micro perforated material on the skin side of the bag



### Proxima®+

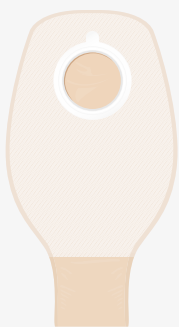
- 100% hydrocolloid skin protector
- Soft non-woven material on the both sides of the bag
- Available with filter



### Proxima® Border

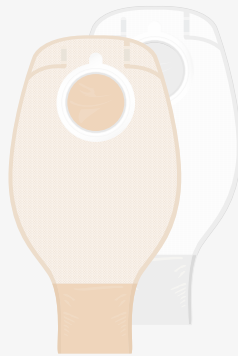
- Hydrocolloid skin protector with acrylic tape border
- Washable micro perforated material on the skin side of the bag

## 2-piece drainable bags



### Proxima® 2

- Washable micro perforated material on the skin side of the bag



### Proxima® 2+

- Soft non-woven material on the both sides of the bag
- Available with filter



### 2 clamps

- Soft adhesive clamps
- Rigid reusable clamp

# Proxima<sup>®</sup> 2-piece

## Uro bags for urostomates

- Compact design and optimized capacity for more discretion
- Anti-reflux valve
  - Prevents urine backflow which could lead to urinary infections
- B. Braun outlet, secure & easy to handle
  - Hygienic: no residual drop on fingers



### Proxima<sup>®</sup> 2

- Capacity: 690ml (ø 60)
- Universal connector secure and easy to put on and to take off

## A Secure outlet

### OUTLET FOR DAY

- Position open/closed
- Fits in perfectly and is strengthened by a click and a final locking system
- Easy to handle; no risk of wet fingers

### OUTLET FOR NIGHT

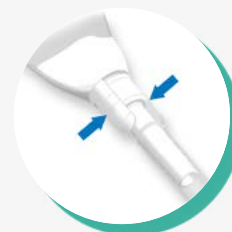
- Click at connection
- Can be connected to a night drainage bag
- Outlet designed to avoid bag twist



Closed



Open



Universal Connection  
to urine bags



Capacity: 2L



# Proxima® | Proxima® +

## Common features & benefits

# 2

### Types of skin protectors

- Standard
- With acrylic tape

### Shape of skin protector

- Designed to spread traction force out evenly

### Cuttable up to 70mm max

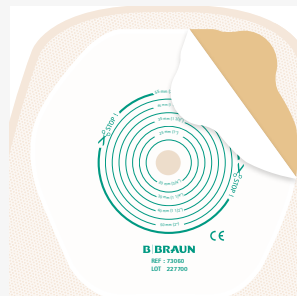
- Can be used in immediate post-op

## Skin protectors for 1-piece system

### Standard

#### 100% full hydrocolloid skin protector

- Optimal skin protection
- Flexibility and comfort
- Designed for frequent changes

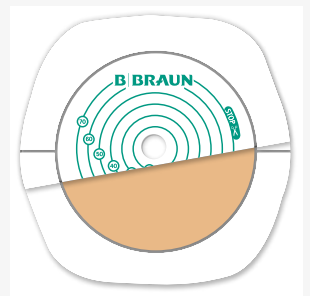


Standard skin protector

### 2. Border

#### Hydrocolloid with acrylic tape border skin protector

- Immediate adhesivity
- Enhanced security



Skin protector with acrylic tape border

## Wafers for 2-piece system

1. Full hydrocolloid skin barrier for optimal skin protection
2. Combined hydrocolloid & acrylic tape border for increased security feeling
3. Convex with 8mm depth for retracted stomas

Discreet flange including belt loops for extra fixation when needed

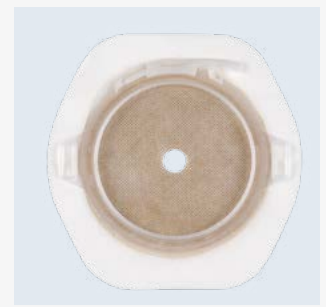
### Coupling system with locking

- Coupling with minimum pressure on the abdomen
- Extra reassurance: when you a slight click is felt, it will assure you that the bag is securely positioned

Release paper with printed cutting-target



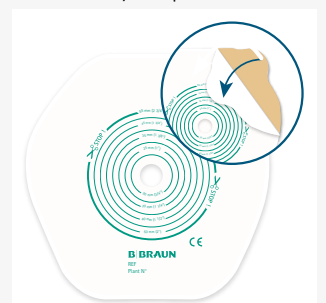
1. Flat full hydrocolloid



2. Combined hydrocolloid + acrylic tape border



3. Convex



Release paper

# Proxima® 1-piece



Closed filter bags (box of 30)	Diameter (mm)	References beige	References transparent
Proxima	10-70	● 55010A	○ 55110A
Proxima +	10-70	● 54010A	○ 54110A



Drainable bags w/o filter (box of 30)	Diameter (mm)	References beige	References transparent
Proxima*	10-70	● 55410A	○ 55510A
Proxima Border*	10-70	● 56410A	○ 56510A



\* 30 Soft clamp + 1 rigid



Drainable filter bags (box of 10)	Diameter (mm)	References beige	References transparent
Proxima + + 1 rigid clamp	10-70	● 54410A	○ 54510A



## Wafers



Flat wafer (box of 10)		Diameter (mm)	References
Proxima 2	✂	40/ 12-35	73040A
Proxima 2	✂	50/ 12-45	73050A
Proxima 2	✂	60/ 12-55	73060A
Proxima 2	✂	80/ 12-75	73080A



Flat wafer Border (box of 10)		Diameter (mm)	References
Proxima 2 +	✂	40/ 12-35	76040A
Proxima 2 +	✂	50/ 12-45	76050A
Proxima 2 +	✂	60/ 12-55	76060A
Proxima 2 +	✂	80/ 12-75	76080A



Convex wafer (box of 5)		Diameter (mm)	References
Proxima 2 +	✂	50/ 15-30	77050A
Proxima 2 +	✂	60/ 15-40	77060A
Proxima 2 +	✂	80/ 15-60	77080A

✂ Cut-to-fit | ● Beige | ○ Transparent

# Proxima® 2-piece



Closed filter bags (box of 30)	Diameter (mm)	References beige
Proxima 2	40	● 73140A
Proxima 2	50	● 73150A
Proxima 2	60	● 73160A
Proxima 2	80	● 73180A
Proxima 2+	40	● 74140A
Proxima 2+	50	● 74150A
Proxima 2+	60	● 74160A
Proxima 2+	80	● 74180A



Drainable bags (box of 30)	Diameter (mm)	References beige
Proxima 2 + 1 rigid clamp	40	● 73340A
Proxima 2 + 1 rigid clamp	50	● 73350A
Proxima 2 + 1 rigid clamp	60	● 73360A
Proxima 2 + 1 rigid clamp	80	● 73380A



Drainable filter bags (box of 10)	Diameter (mm)	References beige	References transparent
Proxima 2+ + 1 rigid clamp	40	● 74340A	○ 74440A
Proxima 2+ + 1 rigid clamp	50	● 74350A	○ 74450A
Proxima 2+ + 1 rigid clamp	60	● 74360A	○ 74460A
Proxima 2+ + 1 rigid clamp	80	● 74380A	○ 74480A



Urostomy bags* (box of 10)	Diameter (mm)	References transparent
Proxima 2 Uro	40	○ 73540A
Proxima 2 Uro	50	○ 73550A
Proxima 2 Uro	60	○ 73560A

\* + 5 universal connectors

B. Braun Medical SAS | 26 rue Armengaud | 92210 Saint-Cloud - France Tél. 01 41 10 53 00 | Fax 01.70.83.45.00 | [www.bbraun.fr](http://www.bbraun.fr) | [www.bbraun.com](http://www.bbraun.com) | Société par Actions Simplifiée with a share capital of 31 000 000 € | RCS Nanterre 562050856

For most countries a specific letter is added at the end of the radical reference. Availability may vary from one country to another.

All volumes are measured according to ISO 8670-2 standard.

This medical device is a regulated health care product and on the basis of this regulation is certified CE.

This document and its contents, including all institutional data, information, trademarks and logos mentioned herein are the exclusive property of B. Braun.

Any representation and / or reproduction, total or partial, of this document and its contents without the express prior consent of B. Braun, is strictly prohibited and constitutes an infringement of the intellectual property rights of B. Braun. Non binding documents and photographs.

Please read carefully the instructions for use.

The products commercialized by B. Braun Medical Et B. Braun Hospicare Ltd. shall exclusively be used in accordance with the package inserts which have been updated and included in the boxes.