

Navien™ intracranial support catheter brings clinical advantage

Navien™ intracranial support catheter - the large inner diameter is providing more clinical treatment options:

- Higher flow rate enables better contrast injections and visualization^{1,2}
- Higher aspiration rates^{1,2}
- Capture of larger pieces of clot^{1,2}
- More flexibility, allowing the use^{1,2} of different device combinations

Navien™ intracranial support catheter

Great trackability for an optimized treatment platform

- Distal support that reaches further^{1,2}
- Support closer to the treatment site for more stability during device delivery and deployment^{1,2}

Great durability for optimized performance

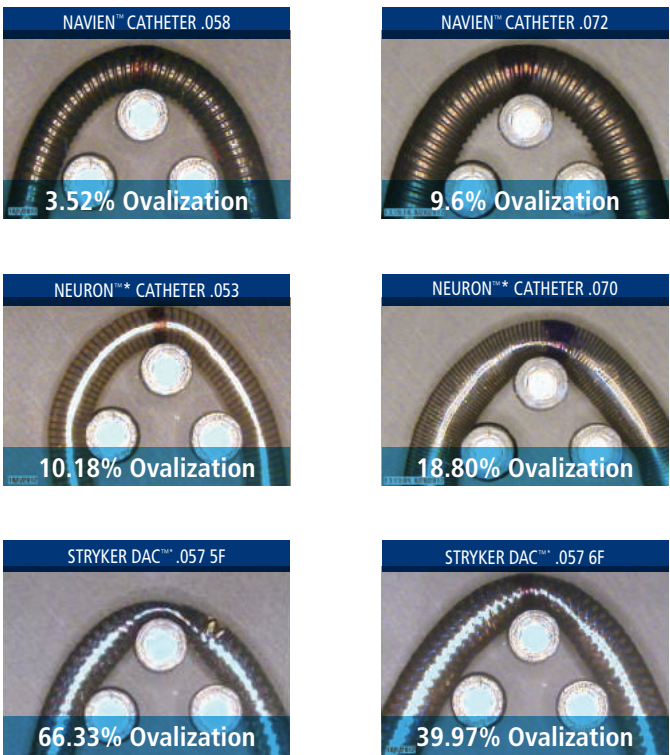
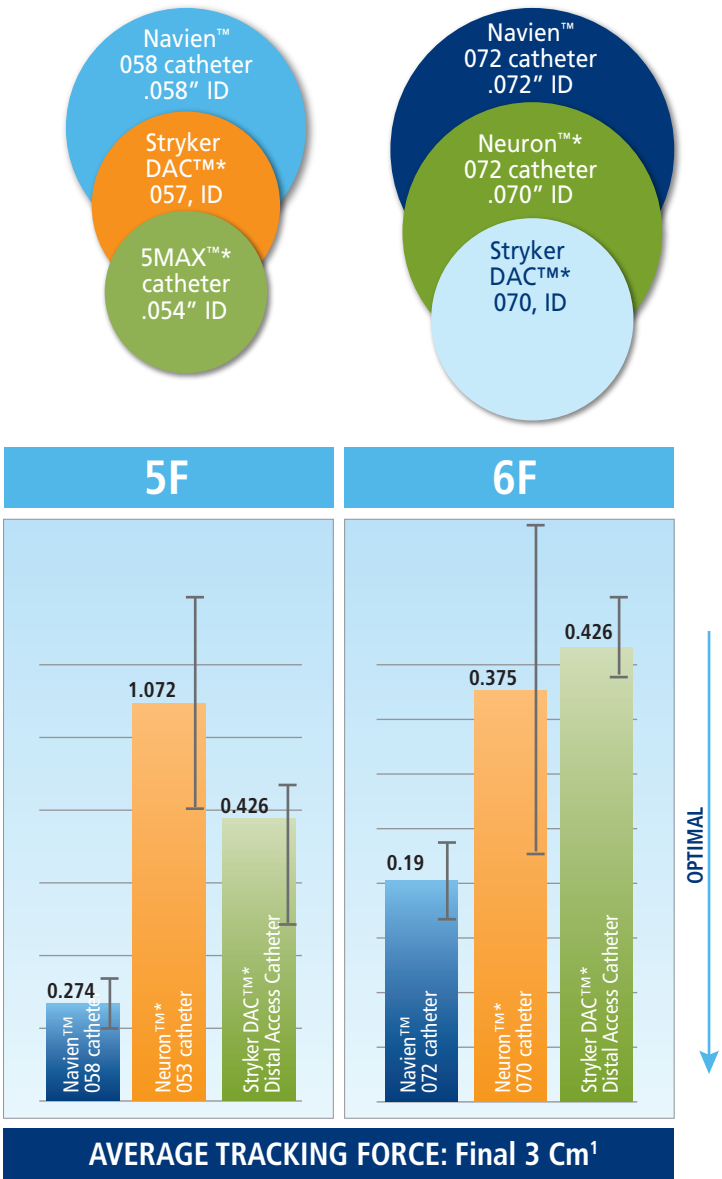
- Great kink resistance maintains patent lumen for device delivery^{1,2}
- Great aspiration flow rate through unkinked catheter^{1,2}

¹ Internal Testing TRNV-FD3157 5F Guide Catheter - Rev A 2012 N=3

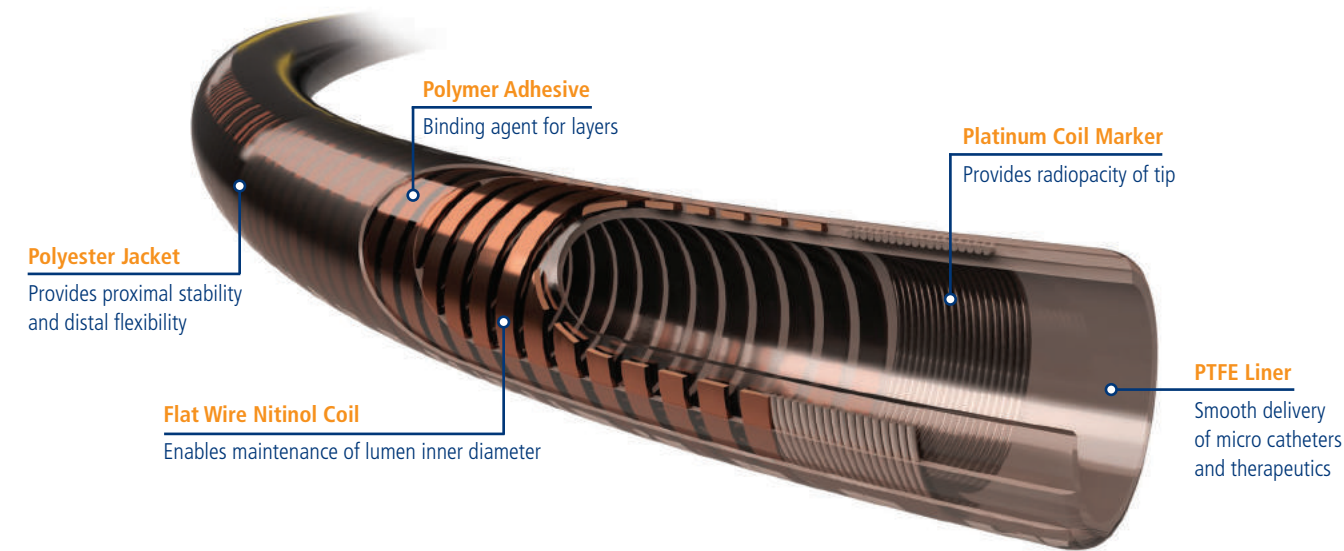
² Internal Testing TRNV-FD3140 6F Guide Catheter - Rev A 2012 N=3

³ See last page for a list of catheters tested

* When used as indicated with the Solitaire™ FR device



Navien™ Intracranial Support Catheter Device Details[†]



Navien™ Intracranial Support Catheter Ordering Information

Product Catalogue Number	Maximum Outer Diameter (F / in)	Inner Diameter (in)	Length (cm)	Tip Shape	Wire Compatibility (in)
RFXA058-115-08	5.2/0.070 max	0.058	115	Straight	0.035 / 0.038
RFXA058-125-08	5.2/0.070 max	0.058	125	Straight	0.035 / 0.038
RFXA058-130-08	5.2/0.070 max	0.058	130	Straight	0.035 / 0.038
RFXA072-105-08MP	6.3/0.084 max	0.072	105	Multi-Purpose 25°	0.035 / 0.038
RFXA072-115-08MP	6.3/0.084 max	0.072	115	Multi-Purpose 25°	0.035 / 0.038

[†] Reference DWGRFX058-XXX-XX and DWGRFX072-XXX-XX

¹ 5F Navien™ Intracranial Support Catheter Marketing Test Data TRNV-10813

- Navien™ 058, N=3
- Envoy™*, N=3
- Chaperon™*, N=3
- DAC™* 057, N=3
- Neuron™* 053, N=3
- Flexor™*, N=3
- SMAX™*, N=3

² 6F Navien™ Intracranial Support Catheter Marketing Test Data TRNV-10812

- Navien™ 072, N=3
- Envoy™*, N=3
- FargoMax™*, N=3
- DAC™* 070, N=3
- Chaperon™*, N=3
- 4MAX™*, N=3
- Flexor™*, N=3

Indications, contraindications, warnings and instructions for use can be found in the product labeling supplied with each device.

COVIDIEN, COVIDIEN with logo, Covidien logo and "positive results for life" are U.S. and internationally registered trademarks of Covidien AG. TM* Trademark of its respective owner. Other brands are trademarks of a Covidien company. © 2013 Covidien. 76983-001 (A) MAY/13



Navien™ Intra Cranial Support Catheter
When Procedural Support really matters



COVIDIEN
106-108 RUE LA BOÉTIE
75008 PARIS
FRANCE

+33 156 88 59 10 [T]
+33 156 88 59 11 [F]

WWW.COVIDIEN.COM

Flow Diversion

TRACKABLE
low tracking force^{1,2}

Enhances distal access bringing support point closer to treatment site, increasing stability for device delivery and deployment^{1,2}

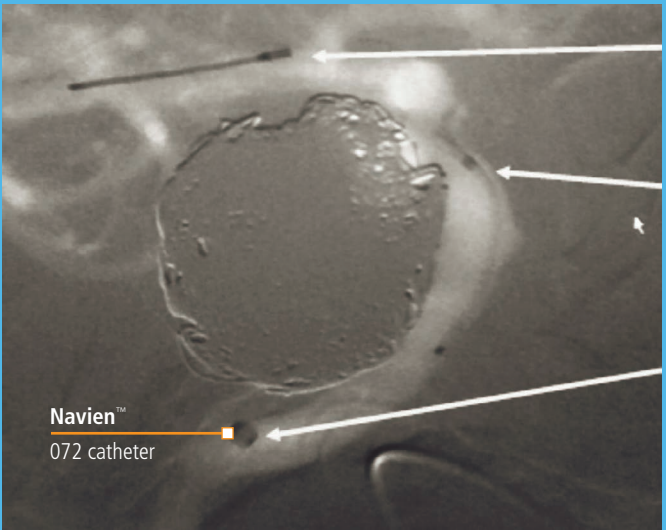
LARGE ID
in 5F & 6F catheters^{1,2}

Allows for better roadmaps and placement of multiple catheters^{1,2}

DURABLE
ovalization resistance^{1,2}

Ensures patent lumen in guide catheter allowing unrestricted movement of micro catheter^{1,2}

Flow Diversion —
Giant Recurrent ICA
Aneurysm with the
Navien™ 072 catheter



Covidien owned image

¹ Internal Testing TRNV-FD3157 5F Guide Catheter - Rev A 2012 N=3

² Internal Testing TRNV-FD3140 6F Guide Catheter - Rev A 2012 N=3

³ See last page for a list of catheters tested

Acute Ischemic Stroke

LARGE ID
in 5F & 6F catheters^{1,2}

Allows capture of large clot and greatest aspiration for Solitaire™ FR device procedures^{1,2}

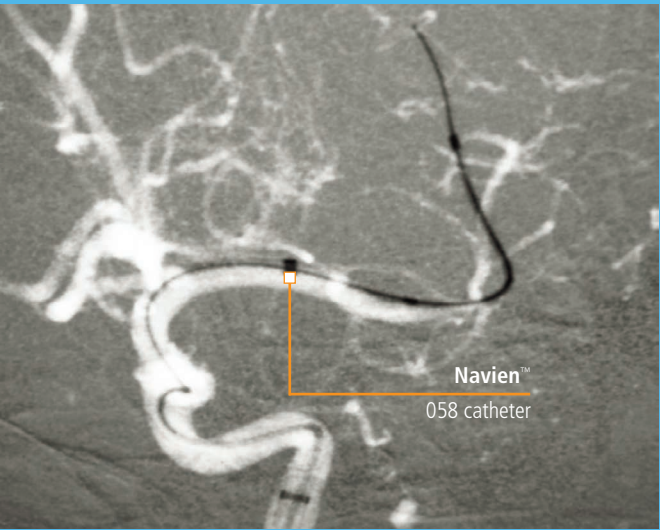
TRACKABLE
low tracking force^{1,2}

Allows access close to thrombus for stable clot crossing, Solitaire™ FR revascularization device delivery and local aspiration^{1,2}

DURABLE
ovalization resistance^{1,2}

Ensures high aspiration even in tortuosity. Aspiration drops when catheters kink; the Navien™ catheter has great kink resistance.^{1,2}

Stroke —
Navien™ 058 catheter
in M1 for Stroke with
the Solitaire™ FR
revascularization device



Covidien owned image

¹ Internal Testing TRNV-FD3157 5F Guide Catheter - Rev A 2012 N=3

² Internal Testing TRNV-FD3140 6F Guide Catheter - Rev A 2012 N=3

³ See last page for a list of catheters tested

Coils / Liquid Embolics

DURABLE
ovalization resistance^{1,2}

Maintains patent lumen in tortuosity for smooth micro catheter manipulation^{1,2}

Bringing support point distal provides stability for:

- Ease of catheter manipulation and less micro catheter kick out^{1,2}

TRACKABLE
low tracking force^{1,2}

Allows easy device and micro catheter manipulation during:^{1,2}

- Balloon-assisted coiling
- Stent-assisted coiling
- Pipeline™ embolization device
- Contrast runs

LARGE ID
in 5F & 6F catheters^{1,2}

Coiling —
6 x 4 Multilobular
Aneurysm with the
Navien™ 058 catheter



Covidien owned image

¹ Internal Testing TRNV-FD3157 5F Guide Catheter - Rev A 2012 N=3

² Internal Testing TRNV-FD3140 6F Guide Catheter - Rev A 2012 N=3

³ See last page for a list of catheters tested