



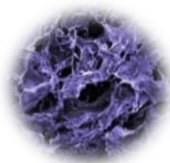
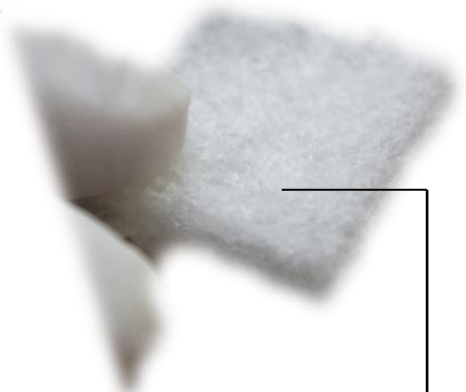
**DECOLL<sup>®</sup>**

**COLLAGEN**

**DURA MATRIX**

# DECOLL®

- ✓ It is a collagen barrier produced from ultra pure type-1 collagen (contains > 95.5% type-1 collagen).
- ✓ Regeneration of tissues and cells.
- ✓ Optimum absorption, maximum regeneration.
- ✓ Extracellular matrix similar to developed natural structure.



# DECOLL<sup>®</sup> COLLAGEN DURA MATRIX

- ✓ The collagen dural matrix acts as a barrier between the dura and surrounding tissues.
- ✓ It does not require suture, it is directly applied and placed.
- ✓ During the healing period of the tissue, the implanted matrix maintains its position and is absorbed into the structure.
- ✓ It is used safely in durotomy cases.
- ✓ It accelerates the formation of new arachnoid membrane and pia mater.
- ✓ Thanks to its ergonomic and elastic structure, it quickly penetrates into complex tissue surfaces.
- ✓ Durasheet is a barrier matrix that prevents peridural fibrous and adhesions .



# DECOLL<sup>®</sup> COLLAGEN DURA MATRIX

- ✓ Fast and high absorption capacity.
- ✓ High tensile strength.



- ✓ Allows double-sided use in all areas requiring dura repair.
- ✓ It does not require suture, it is directly applied and placed.
- ✓ It can be sutured if necessary.



# DECOLL® SIZES

Dimensions	Reference Codes
2.5x2.5 cm	DCL2525
5x5 cm	DCL5050
6x8 cm	DCL6080
7.5x7.5 cm	DCL7575
7.5x2.5 cm	DCL7525
10x10 cm	DCL100100
10x12.5 cm	DCL100125
11x8 cm	DCL11080
12.5x7.5 cm	DCL12575
14x8 cm	DCL14080
12.5x12.5 cm	DCL125125
12x16 cm	DCL120160
17x17 cm	DCL170170
20x14 cm	DCL200140
20x16 cm	DCL200160



DESU MEDİKAL ÜRÜNLER ve  
TIBBİ CİHAZLAR SAN. ve TİC. A.Ş  
Hacettepe Üniversitesi  
Safir E Blok No: Z02-03  
Beytepe Kampüsü  
Çankaya / ANKARA  
Tel: +903122992563  
Web: [www.desumedical.com.tr](http://www.desumedical.com.tr)  
e-mail: [info@desumedical.com.tr](mailto:info@desumedical.com.tr)

DESU MEDİKAL

CE  
1434