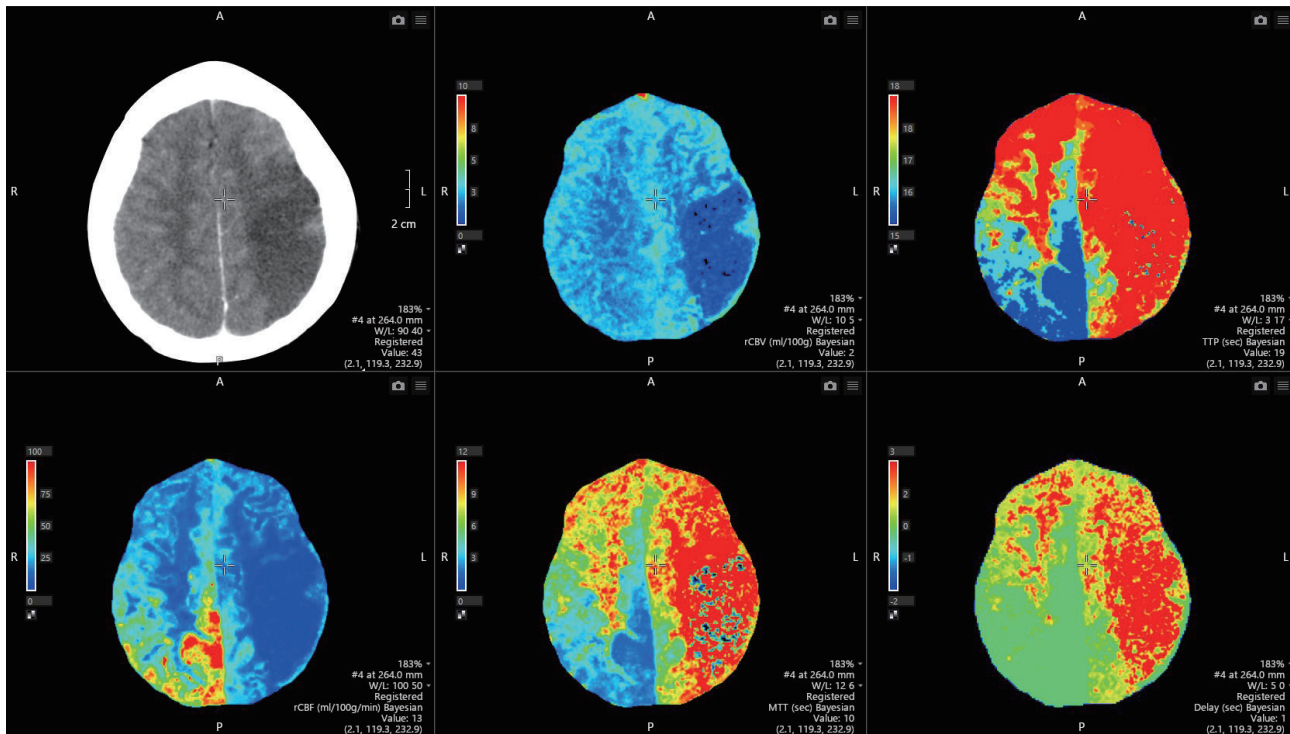


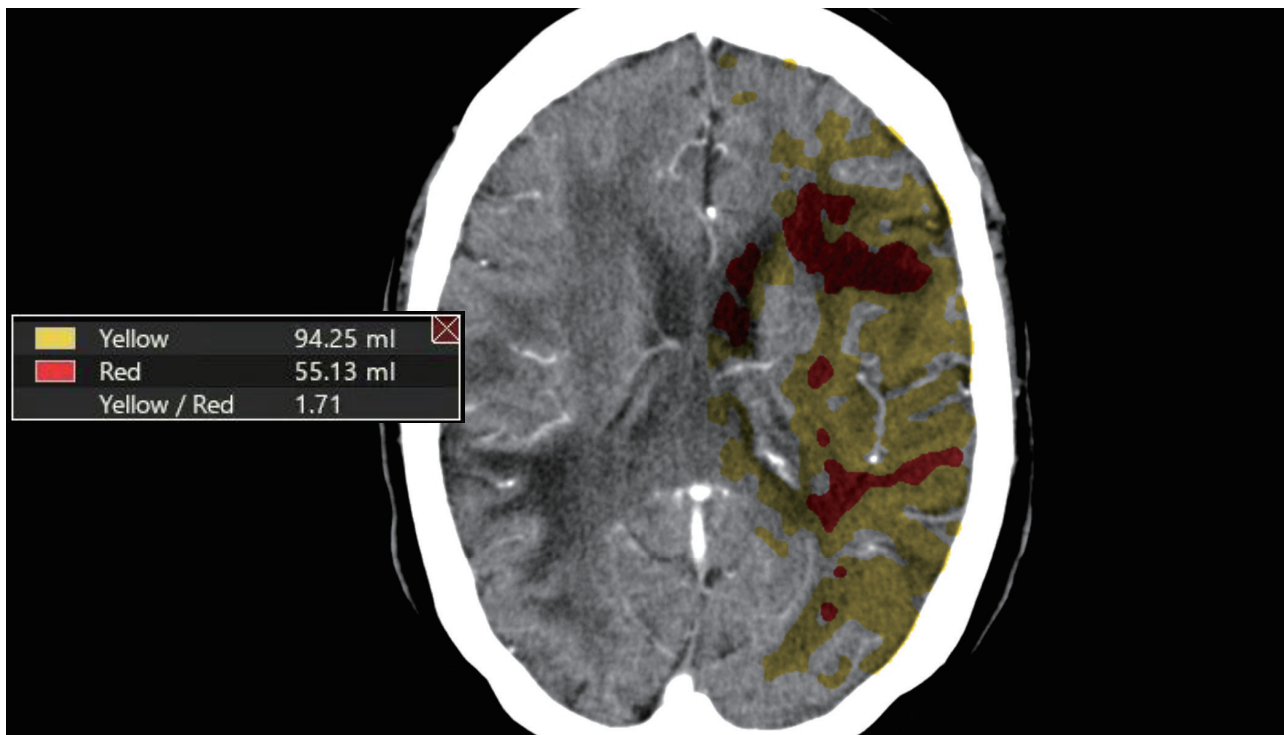
CT Brain Perfusion 2D



CT Brain Perfusion 2D workflow is a convenient method of assessing perfusion disturbances within the brain. Concurrent display of the image maps aid in the assessment of the type and extent of cerebral perfusion disturbances.

Key Benefits

- Vitrea software identifies the artery and vein, then computes five color-coded image maps with quantitative results: delay, mean transit time (MTT), regional blood flow (rCBF), regional blood volume (rCBV) and time to peak (TTP)
- Summary maps communicate results of a CT perfusion exam and provide tissue classification
- Streamlined workflow with automatic curve-fitting, midline correction, motion correction and region of interest templating
- Selection of Bayesian, singular value decomposition (SVD) and delay-insensitive singular value decomposition (SVD+) algorithms



Key Features

- Support for 2D helical and thick-slice CT scan data and jog/helical shuttle wide coverage acquisition
- Three processing algorithm methods:
 - Singular value decomposition (SVD)
 - Delay-insensitive singular value decomposition (SVD+) that accounts for delay of contrast arrival (delayed) in the calculation of the MTT
 - Bayesian – a technique for the computation of the posterior probabilities for the estimated blood flow, delay, residue and time concentration curves
- Single batch with MPRs and perfusion maps or collage portrait format suitable for PACS
- Time density graph plots display the range of image density, transit time for the artery location, image density over time for the artery and vein and corresponding time values

Always refer to the Instructions For Use supplied with the product for complete instructions, indications and cautions.

CANON MEDICAL SYSTEMS CORPORATION
<https://global.medical.canon>

©Canon Medical Systems Corporation 2016-2021. All rights reserved.
 Design and specifications are subject to change without notice.
 MCAHI0039EAC 2021-11 CMSC/Produced in Japan

Canon Medical Systems Corporation meets internationally recognized standards for Quality Management System ISO 9001, ISO 13485. Canon Medical Systems Corporation meets the Environmental Management System standard ISO 14001.

Made for Life is a trademark of Canon Medical Systems Corporation.
 This document may include trademarks or registered trademarks of their respective owners.

Made For life