

## Declarație privind asigurarea garanției lucrărilor

Prin prezenta, Compania “Arscom” SRL vă informează că garanția pentru toate lucrările propuse în cadrul Procedurii de Licitatie publică nr. 21001065 din 24.11.2018 de către “Direcția generală pentru administrarea clădirilor Guvernului Republicii Moldova “ privind “Reparația sistemului de semnalizare antiincendiară cu racordarea la sistemul automatizat de evacuare a fumului la clădirea administrativă din str. A. Russo, nr.1, mun. Chișinău” va fi **1 an**.

Cu respect ,

Adminstrator: Șevcenco Valentina



22/11/2018



## Declarație privind asigurarea garanției utilajului

Prin prezenta, Compania “Arscom” SRL vă informează că garanția pentru utilajul și echipamentul propus în cadrul Procedurii de Licitare publică nr. 21001065 din 24.11.2018 de către “Direcția generală pentru administrarea clădirilor Guvernului Republicii Moldova “ privind “Reparația sistemului de semnalizare antiincendiară cu racordarea la sistemul automatizat de evacuare a fumului la clădirea administrativă din str. A. Russo, nr.1, mun. Chișinău” va fi **3 ani**.

Cu respect ,

Adminstrator: Șevcenco Valentina



22/11/2018

L.S.





**I.P. "AGENȚIA SERVICII PUBLICE"**

Departamentul înregistrare și licențiere a unităților de drept

**EXTRAS**  
**din Registrul de stat al persoanelor juridice**

nr. 13505 din 20.09.2018

Denumirea completă: **SOCIETATEA CU RĂSPUNDERE LIMITATĂ «ARSCOM».**

Denumirea prescurtată: **«ARSCOM» S.R.L.**

Forma juridică de organizare: **Societate cu Răspundere Limitată.**

Numărul de identificare de stat și codul fiscal: **1003600034627.**

Data înregistrării de stat: **30.10.1995.**

Sediul: **MD-2038, str. Nicolai Zelinski, 34/2, ap.(of.) 8, mun.Chișinău, Republica Moldova.**

Modul de constituire: **nou creată.**

Obiectul principal de activitate:

**1 Comerțul cu ridicata al pieselor, componentelor și accesoriilor pentru autovehicule;**

**2 Fabricarea cărămizilor și țiglelor din lut ars;**

**3 Construcții generale de clădiri;**

**4 Comerțul cu ridicata pe bază de tarife sau contracte;**

**5 Intermedieri pentru vânzarea unui asortiment larg de mărfuri.**

Capitalul social: **5400 lei.**

**Administrator: ȘEVCENCO VALENTINA, IDNP 2001042602137.**

Asociați:

**1. PAPANAGA VLADISLAV, IDNP 0983006427919**

**cota 5400.00 lei, ce constituie 100 %.**

Prezentul extras este eliberat în temeiul art. 34 al Legii nr. 220-XVI din 19 octombrie 2007 privind înregistrarea de stat a persoanelor juridice și a întreprinzătorilor individuali și confirmă datele din Registrul de stat la data de: 20.09.2018.

Specialist superior  
tel. 022-20-7837

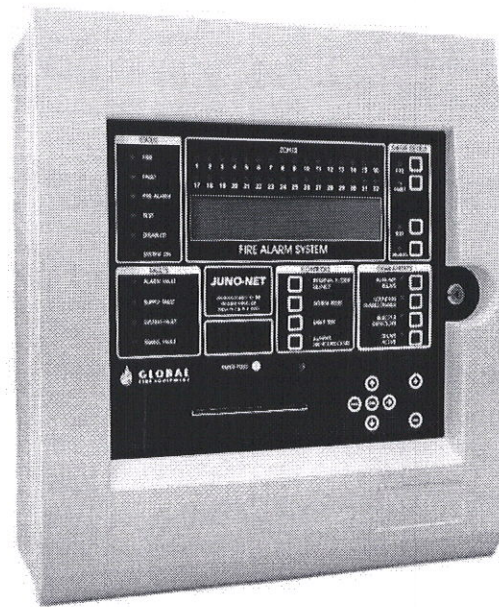
**Teut Marina**



EB 0237429



EN54-2 and EN54-4  
CERTIFIED  
1328-CPR-0160



# JUNO NET

## Networkable Fire Detection System

**JUNO NET is a powerful Analogue Addressable Fire Alarm Control System with networking capabilities that facilitate the configuration of complex Wide Area Fire Detection Systems. Modular construction and distributed intelligence allow systems of up to 96 Loops to be constructed. With a high level of built-in redundancy and emergency back-up features, the JUNO NET is fully equipped to control the most complex installations.**

Using its wide array of interfacing capabilities the **JUNO NET** is ideally placed to provide an efficient and effective solution to the logistics of protecting large institutions. **JUNO NET** is available as a standalone system of up to 13 Loops in a single cabinet and can be expanded to up to **96 Loops** via a networked array of sub-panels which can be supplied in a blank box version or combined with a repeater to allow remote display and control of the system. Networking is done by a monitored, redundant, double RS422/RS485, Fibre optic loop or TCP/IP network.

The **JUNO NET** networking capabilities are further enhanced by a wide range of programming options which provide the capability to customise the system according to the needs of the customer. Flexible cause and effect programming of I/O devices and warning devices ensure that Fire or Fault warnings trigger the appropriate response.

An interactive graphic representation of the system can be displayed on the users' computer via the **ODYSSEY** graphical software (optional). All the devices on the system can be displayed on a building plan showing their status in real time. In the event of fire or fault the customer can control the system and access all the necessary information with a few mouse-clicks.

Automatic device detection at start up reduces time spent at the commissioning stage. In Installation mode the **JUNO NET** detects and recognises addressed and connected devices with the system being fully operational in less than two minutes. The default programming ensures that the system is ready to detect Fire/Fault alerts from the moment that power is applied.

Additional programming, to customise the system can be implemented via the onboard keypad, IR programmer, PS/2 keyboard or with a laptop PC running the **GFE Connector** software which is available free of charge on the Global Fire website.

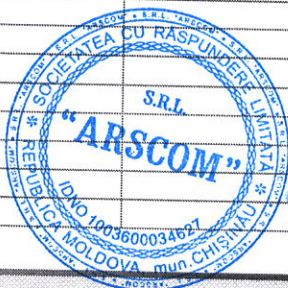


JUNO NET

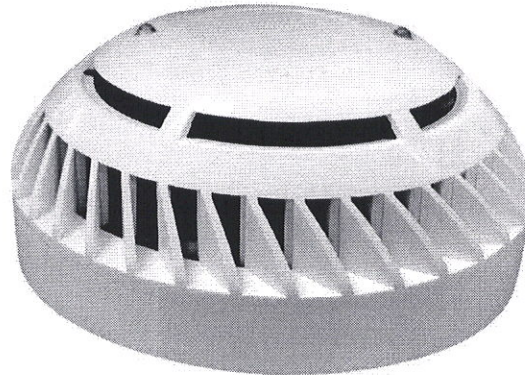
**Key Features**

- ▶ Fully expandable system from 1-96 Loops with distributed intelligence for added security
- ▶ 125 Device addresses per loop
- ▶ Up to 96 Loop sounders with 32 individually programmable addresses per Loop
- ▶ 96 VULCAN 2 (addressable) ultra low current sounders or beacons per Loop. Only 64 of these units should be installed per loop when combined sounder beacons are being used. This number includes addressable, shadow, auxiliary and detector-sounder/beacon versions of these units
- ▶ Compatible with major analogue addressable communications protocols
- ▶ 2 Fire output changeover relays and 1 Fault output relay (NC)
- ▶ Open collector outputs for Fire, Fault and pre-alarm remote indication
- ▶ 2 Fully monitored conventional sounder outputs on main panel and each sub panel
- ▶ Repeaters with optional integrated Sub-Panels (J-NET-REP + Loop Card)
- ▶ 384 Programmable zones
- ▶ 512 Fully programmable sounder and I/O groups
- ▶ Event Log 2000 entries FIFO
- ▶ Backlit LCD display 4 row x 40 characters
- ▶ Programming options: onboard keypad, Remote IR (optional), PS2 Keyboard and GFE Connector Software
- ▶ PC Graphics package ODYSSEY for alarm management and reporting (optional)
- ▶ Multiple Language support (menu selectable)
- ▶ MODBUS (ASCII & RTU) and BMS support

TECHNICAL SPECIFICATIONS	1 - 4 LOOPS	4 - 13 LOOPS
LOOPS	1 to 4 loops - Max 275 mA per loop	4 to 13 loops - Max 275 mA per loop
SOUNDER OUTPUTS	2 at 28 V DC / 500 mA each	4/6/8 24 V DC / 500 mA each
AUX. RELAYS FIRE	2 rated 50 VAC / DC 1A resistive	2 rated 50 VAC / DC 1A resistive
AUX. RELAY FAULT	1 rated 50 VAC / DC 1A resistive	1 rated 50 VAC / DC 1A resistive
AUX SUPPLY OUTPUT	28 V DC; 2x230 mA	28 V DC; 2x230 mA
ADDITIONAL OUTPUTS	Multiplexed up to 384 Zones	Multiplexed up to 384 Zones
PRIMARY SUPPLY	230 +10% -15% V AC	230 +10% -15% V AC
SECONDARY SUPPLY	28 V DC Nominal	28 V DC Nominal
POWER SUPPLY RATING	65 W (1-3 Loop) - 150 W (4 Loop)	150 W (4-6 Loop) - 200 W (7-13 Loop)
QUIESCENT CURRENT (NO DEVICES)	130 mA (1-3 Loop) - 180 mA (4 Loop)	130 mA + 90 mA / sub-panel
BATTERIES (INTERNAL)	2 x 12 V 12 AH	2 x 12 V 12 AH
OPERATING TEMPERATURE	-10°C to 50°C	-10°C to 50°C
STORAGE TEMPERATURE	-10°C to 50°C	-10°C to 50°C
HUMIDITY	Max 95% no condensation	Max 95% no condensation
PROTECTION	IP21	IP21
DIMENSIONS	375 (L) x 345 (W) x 139 (H) mm	420 (L) x 550 (W) x 127 (H) mm
WEIGHT	5,1 Kg (no batteries)	8,1 Kg (no batteries)
COLOUR	White or Red	White or Red
<b>ORDER CODE</b>		
J-NET-EN54-SC-001	1328-CPR-0160	1 LOOP - PSU 2.4A
J-NET-EN54-SC-002	1328-CPR-0160	2 LOOPS - PSU 2.4A
J-NET-EN54-SC-003	1328-CPR-0160	3 LOOPS - PSU 2.4A
J-NET-EN54-SC-004		4 LOOPS - PSU 5A
J-NET-EN54-SC-004-L		
J-NET-EN54-SC-005		LARGE BOX - 4 LOOPS - PSU 5A
J-NET-EN54-SC-006		LARGE BOX - 5 LOOPS - PSU 5A
J-NET-EN54-SC-007		LARGE BOX - 6 LOOPS - PSU 5A
J-NET-EN54-SC-008		LARGE BOX - 7 LOOPS - PSU 7.5A
J-NET-EN54-SC-009		LARGE BOX - 8 LOOPS - PSU 7.5A
J-NET-EN54-SC-010		LARGE BOX - 9 LOOPS - PSU 7.5A
J-NET-EN54-SC-011		LARGE BOX - 10 LOOPS - PSU 7.5A
J-NET-EN54-SC-012		LARGE BOX - 11 LOOPS - PSU 7.5A
J-NET-EN54-SC-013		LARGE BOX - 12 LOOPS - PSU 7.5A
		LARGE BOX - 13 LOOPS - PSU 7.5A



*Handwritten signature in blue ink.*



# ZEOS-AS

## Analogue Addressable Fire Detectors with Smart Addressing

The ZEOS-AS series of Analogue Addressable Detectors have been designed to be fully compatible with Global Fire Equipment's range of intelligent control panels, JUNIOR and JUNO NET.

The ZEOS detector range, in conjunction with JUNIOR and JUNO NET panels, can accommodate several Alarm thresholds and timed options in combined smoke and heat detectors variants.

The ZEOS-AS series is certified to EN54-5 and EN54-7 and consists of combined photoelectric smoke and heat detectors. Optionally they can be fitted with a short-circuit loop isolator.

The ZEOS-AS range of fire detectors is not addressed using a D.I.L. switch, it uses instead GFE's proprietary Smart Addressing Mechanism (SAM). The address can be set either by using GFE's analogue device programmer or alternatively, when used in conjunction with GFE's range of Intelligent Analogue Addressable Fire Detection Panels, GFE's automatic address setting mode ASET.

### Key Features

- ▶ Dual LEDs for 360° visibility
- ▶ Advanced detection and communication protocols
- ▶ Easy installation and maintenance
- ▶ Sleek low-profile housing
- ▶ Durable sensor head, no need for replacement
- ▶ SMD circuit board design. High quality and reliability guaranteed

### TECHNICAL SPECIFICATIONS

SUPPLY VOLTAGE	Loop Powered 17-30 V DC
CURRENT - QUIESCENT / SURGE	450 uA max.
CURRENT - DEVICE IN ALARM	4 mA - Alarm LED illuminated
SENSITIVITY	According to EN54-5 or/and EN54-7, EN54-17
CABLE SIZE	0.5-2.5 mm <sup>2</sup>
RESET/START-UP TIMES	20 seconds max.
SMOKE SENSITIVITY SETTINGS	Low / Normal (default) / High
HEAT ALARM SETPOINTS	55 C / 65 C (default) / 75 C / 85 C
MULTISENSOR MODES	Heat / Smoke / Combined (default)
COLOUR / CASE MATERIAL	White / ABS
NORMAL / TRANSIENT OPERATION TEMPERATURE	0°C to 50°C / -10°C to 85°C
MAX. HUMIDITY	95% RH Non-Condensing
DIMENSIONS / WEIGHT	100 (D) x 50 (H) mm inc. base / 92 g (without base) & 144 g (inc. base)

### ORDER CODE

ZEOS-AS-S	1328-CPR-0526	ANALOGUE ADDRESSABLE PHOTOELECTRIC SMOKE DETECTOR WITH SMART ADDRESSING
ZEOS-AS-H	1328-CPR-0527	ANALOGUE ADDRESSABLE TEMPERATURE/HEAT DETECTOR WITH SMART ADDRESSING
ZEOS-AS-SH	1328-CPR-0525	ANALOGUE ADDRESSABLE COMBINED SMOKE & HEAT DETECTOR WITH SMART ADDRESSING
ZEOS-AS-SI	1328-CPR-0609	ANALOGUE ADDRESSABLE PHOTOELECTRIC SMOKE DETECTOR W/ ISOLATOR & SMART ADDRESSING
ZEOS-AS-HI	1328-CPR-0608	ANALOGUE ADDRESSABLE TEMPERATURE/HEAT DETECTOR W/ ISOLATOR & SMART ADDRESSING
ZEOS-AS-SHI	1328-CPR-0524	ANALOGUE ADDR. COMBINED SMOKE & HEAT DETECTOR W/ ISOLATOR & SMART ADDRESSING



# ZEOS-AS

ma\_zeosas\_01\_010001\_en\_180420



MADE IN PORTUGAL - EU

## Analogue Addressable Fire Detector w/ Smart Addressing

### GLOBAL FIRE EQUIPMENT S.A.

Sítio dos Barrabés, Armazém Nave Y, Caixa Postal 908-Z, 8150-016 São Brás de Alportel - PORTUGAL  
Tel: +351 289 896 560 • Sales: sales@globalfire.pt • Technical Support: techs@globalfire.pt • www.globalfire.pt

### TECHNICAL SPECIFICATIONS

SUPPLY VOLTAGE	Loop Powered - 17 V to 30 V DC
CURRENT - QUIESCENT / SURGE	450 uA max.
CURRENT - DEVICE IN ALARM	4 mA - Alarm LED illuminated
SENSITIVITY	According to EN54-5 or/and EN54-7, EN54-17
CABLE SIZE	0.5-2.5 mm <sup>2</sup>
RESET/START-UP TIMES	20 seconds max.
COLOUR / CASE MATERIAL / MAX. HUMIDITY	White / ABS / 95% RH Non-Condensing
NORMAL / TRANSIENT OPER. TEMPERATURE	0°C to 50°C / -10°C to 85°C
DIMENSIONS / WEIGHT	100 mm (D) x 50 mm (H) inc. base / 144 g inc. base

ORDER CODE	CERTIFICATE	DESCRIPTION
ZEOS-AS-S	1328-CPR-0526	ANALOGUE ADDRESSABLE PHOTOELECTRIC SMOKE DETECTOR WITH SMART ADDRESSING
ZEOS-AS-H	1328-CPR-0527	ANALOGUE ADDR. TEMPERATURE/HEAT DETECTOR WITH SMART ADDRESSING
ZEOS-AS-SH	1328-CPR-0525	ANALOGUE ADDR. COMBINED SMOKE & HEAT DETECTOR WITH SMART ADDR.
ZEOS-AS-SI	1328-CPR-0609	ANALOGUE ADDR. PHOTOELECTRIC SMOKE DETECTOR W/ ISOLATOR & SMART ADDR.
ZEOS-AS-HI	1328-CPR-0608	ANALOGUE ADDR. TEMPERATURE/HEAT DETECTOR W/ ISOLATOR & SMART ADDR.
ZEOS-AS-SHI	1328-CPR-0524	ANALOGUE ADDR. COMBINED SMOKE & HEAT DETECTOR W/ ISOLATOR & SMART ADDR.

### MECHANICAL SPECIFICATION



Detector Head  
Detector Base

### INSTALLATION

#### INSTALLING THE BASE

To ensure proper fit of the detector head to the base, all wires should be properly dressed at installation by positioning all wires flat against terminals and fastening the wires away from connector terminals. The detector base can be mounted directly onto most standard electrical junction boxes.

#### INSTALLING THE HEAD

Align detector components using provided alignment marks on both the head and base. Align detector mark and short alignment mark on base. Fit the detector head onto the base and twist clockwise to secure it. After all detectors are installed, apply power to the control unit and activate the detection loop. Test the detectors as described below.

#### TESTING

All remote signalling systems, releasing devices and extinguishing systems should be disconnected during the test period and reconnected at the conclusion of testing.

**SMOKE:** Allow smoke from a cotton wick or test smoke aerosol to enter the detector's smoke chamber for at least 10 seconds. When sufficient smoke has entered, the detector will signal an alarm. This will be indicated by the illumination of the 2 Red LEDs provided. Make sure to clear smoke out of the chamber before resetting in order to keep the detector at its current sensitivity setting.

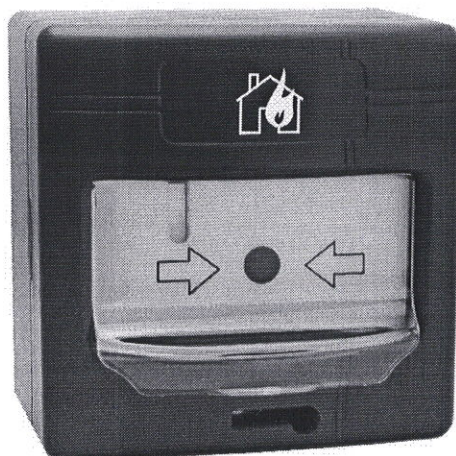
**HEAT:** The detector to be tested should be subject to a flow of warm air at a temperature of between 65°C and 80°C. This requirement can be met by some domestic hair dryers. Switch on the warm airflow and check that the temperature is correct and stable. From a distance of several cms, direct the airflow at the guard protecting the thermistor. The detector should alarm within 60 seconds. Upon alarm immediately remove the heat source and check that the Red LEDs of the detector are illuminated. If a detector fails to activate within 60 seconds, confirm connections and programming. If necessary replace unit. Note: After testing, check that the system is returned to normal operation. Notify the appropriate authorities that the testing procedure has been completed and the system is active again.

#### MAINTENANCE

The recommended minimum requirement for detector maintenance consists of annual cleaning of dust from the detector head using a low power vacuum cleaner. >> **DO NOT ATTEMPT TO DISASSEMBLE THE DETECTOR**



*Handwritten signature*



## GFE-MCPE-A

### Addressable Manual Call Point

The GFE-MCPE-A is an Analogue Addressable Manual Call Point, designed and manufactured to comply with EN54-11, compatible with all GFE Addressable Control panels. With its enhanced communications mechanism the typical response time, when in alarm, is approximately one second, depending on the number of call points connected to the device loop. There is also a version incorporating a Loop Isolator.

A bi-colour LED flashes Green when the unit is interrogated by the control panel and is illuminated Red when in Alarm. The command to illuminate the Red LED is emitted by the control panel in response to activation of the individual call point thus confirming that the Alarm signal has been received at the control panel. The individual address, up to 125, of each call point is set via an eight way DIL switch.

The unit is supplied complete with a hinged flap which protects the trigger element from accidental activation and reduces malicious activations as two actions are required in order to activate the device. This unit can be both surface and flush mounted and it can be easily reset using the supplied key after activation.

TECHNICAL SPECIFICATIONS	
SUPPLY VOLTAGE	Loop Powered 20-30 V DC
CURRENT - QUIESCENT	500 uA - 650 uA for GFE-MCPE-AI
CURRENT - DEVICE IN ALARM	3.1mA - Yellow LED ON only applies to GFE-MCPE-AI
CABLE SIZE	0.5-2.5 mm <sup>2</sup>
MAX. RECOMMENDED PER LOOP	30 GFE-MCPE-A or GFE-MCPE-AI
COLOUR / CASE MATERIAL	Red / ABS & Clear/ PC - Flame Retardant 94 V0
PROTECTION	IP24D
OPERATING TEMPERATURE	-10°C to 55°C
MAX. HUMIDITY	95% RH Non-Condensing
DIMENSIONS	92.6 (W) x 92.6 (H) x 60.1 (D) mm
WEIGHT	152 g
ORDER CODE	
GFE-MCPE-A	1328-CPR-0374 ADDRESSABLE MANUAL CALL POINT
GFE-MCPE-AI	1328-CPR-0375 ADDRESSABLE MANUAL CALL POINT WITH LOOP ISOLATOR







EN54-3 Type A  
CERTIFIED  
1328-CPR-0286



# VALKYRIE AS

## Addressable Wall Mount Sounder/ Beacon

The VALKYRIE AS is a Wall Mounted Addressable Sounder/ Beacon with low power consumption. Up to 32 individually addressed sounders can be installed per loop occupying address 94 to 125. The address is set using switches 1 to 5 of the 8 way DIL switch. Four different tones are available and selected using DIL switches 6 and 7.

When individual address reporting is not required, VALKYRIE AS can be configured as a Shadow Sounder. In this case sounders do not occupy an address in the loop thus freeing up addresses for more detection devices. Shadow sounders do not report back to the control panel so their presence on the loop is not monitored. Shadow sounders draw current from the loop (10 mA in alarm) and must be included in loop load calculations.

### TECHNICAL SPECIFICATIONS

SUPPLY VOLTAGE	Loop: 20 V to 30 V DC	
LOOP CURRENT - QUIESCENT	0.5 mA	
LOOP CURRENT - SOUNDER/ BEACON ACTIVE	10 mA - 280 mW @ 28 V DC inc. isolator	
MAXIMUM SOUNDER OUTPUT	100 dB (@ 1 meter - 30 V DC)	
MAX. CABLE SIZE	2.5 mm <sup>2</sup>	
OPERATING TEMPERATURE	-10°C to 55°C	
MAX. HUMIDITY	95% RH Non-Condensing	
COLOUR / CASE MATERIAL	Red or White / ABS and PC	
PROTECTION CATEGORY	IP21C - Type A - Indoor use	
DIMENSIONS	110 (D) x 85 (H) mm inc. base	
WEIGHT	254 g - inc. mounting base	
<b>ORDER CODE</b>		
VALKYRIE AS	1328-CPR-0286	ADDRESSABLE WALL SOUNDER
VALKYRIE ASB	1328-CPR-0286	ADDRESSABLE WALL SOUNDER/ BEACON
VALKYRIE ASI	1328-CPR-0286	ADDRESSABLE WALL SOUNDER WITH ISOLATOR
VALKYRIE ASBI	1328-CPR-0286	ADDRESSABLE WALL SOUNDER/ BEACON WITH ISOLATOR





# Valkyrie AS IP65

MANUAL - 11/2017

Addressable Wall Sounder/Beacon Outdoor Use-IP65



## GLOBAL FIRE EQUIPMENT S.A.

Sítio dos Barrabés, Armazém Nave Y, Caixa Postal 908-Z, 8150-016 São Brás de Alportel - PORTUGAL  
Tel: +351 289 896 560 • Sales: sales@globalfire.pt • Technical Support: techs@globalfire.pt • www.globalfire.pt

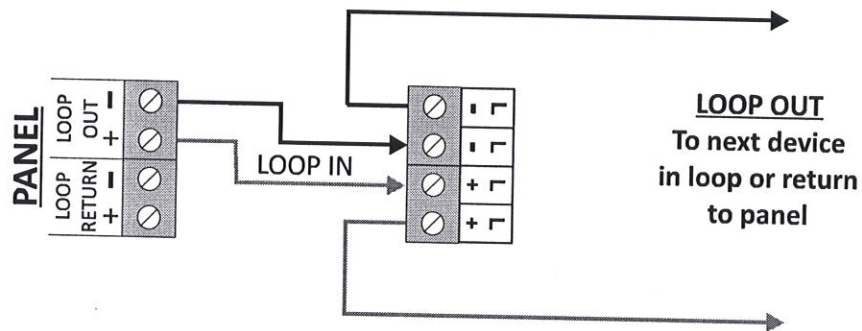
### TECHNICAL SPECIFICATIONS

SUPPLY VOLTAGE	Loop Powered - 20 V to 30 V DC
LOOP CURRENT - QUIESCENT	550 uA max. with isolator
LOOP CURRENT - SOUNDER/BEACON ACTIVE	10 mA - 280 mW @ 30 V DC inc. isolator
MAXIMUM SOUNDER OUTPUT	108 dB (@ 1 meter - 30 V DC)
RESET/START-UP TIMES	20 seconds max.
PROTECTION CATEGORY	Type B - Outdoor Use / Rating IP65
COLOUR / CASE MATERIAL	Red / ABS & PC - Flame Retardant rating 94V0
OPER. TEMPERATURE / MAX. HUMIDITY	-25°C to 70°C / 95% RH Non-Condensing
DIMENSIONS	112 (D) x 110 (H) mm inc. base
WEIGHT	315 g inc. base & 350 g inc. packaging

ORDER CODE	CERTIFICATE	DESCRIPTION
VALKYRIE AS IP65	1328-CPR-0299	ADDRESSABLE WALL SOUNDER - IP65 RATED
VALKYRIE ASB IP65	1328-CPR-0299	ADDRESSABLE WALL SOUNDER/BEACON - IP65 RATED
VALKYRIE ASI IP65	1328-CPR-0299	ADDRESSABLE WALL SOUNDER - IP65 RATED W/ LOOP ISOLATOR
VALKYRIE ASBI IP65	1328-CPR-0299	ADDRESSABLE WALL SOUNDER/BEACON - IP65 RATED W/ LOOP ISOLATOR

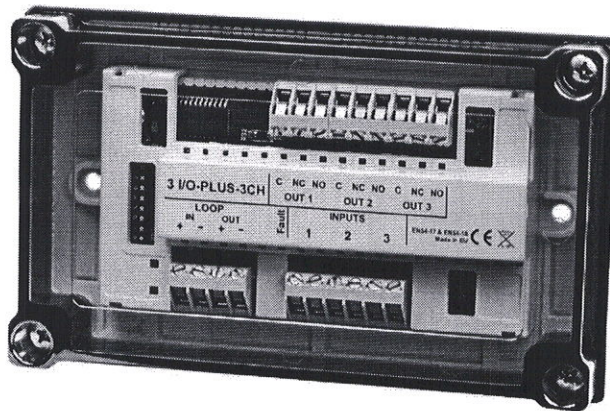
### SOUNDER BASE - LOOP CONNECTIONS

*Please note that this device is polarised.*



**NOTE:** Address programmed on switches 1-5 has an OFFSET of 94.  
For example if D.I.L. switches 1-5 are all set to OFF the actual  
sounder address, as read by the panel, will be 94.





## 3 I/O PLUS

### Addressable Triple Input/Output Module

The 3 I/O PLUS Modules are fully monitored loop powered devices which permit the interfacing of third party equipment with the Fire Alarm Control panel using normally open dry contact connections. Each module can be fitted with a maximum of 3 inputs and 3 outputs. The connection to each input is monitored for fault (open or short-circuit) and Alarm conditions.

The interface is used to monitor the contacts of an external system which must be interfaced to the Fire Alarm System, for example a Flow Switch in a sprinkler system to indicate if the sprinklers have been activated or extinguishant level monitoring in Gas Extinguishing Systems, etc.

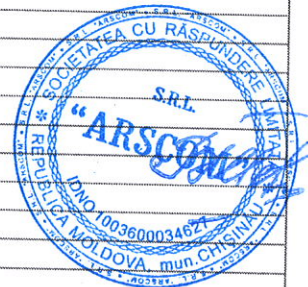
Module is provided with a loop short-circuit isolator and with up to 3 voltage free single pole change over relay outputs. The output relays are always powered directly from the detection loop. It is not required to use an external 24 V DC power supply. Relay operation is confirmed by an onboard red LED. A 8 way D.I.L. switch is provided to configure the module's address. This value can be set in the range 1 to 125.

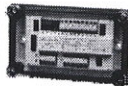
The following programmable functions are available: Input Activation Mode, Delayed Input Alarm Activation, Output Delayed Activation.

#### Key Features

- ▶ Fast Activation Response
- ▶ Loop Powered
- ▶ Status LEDs for each I/O and O/P
- ▶ Low Power Consumption
- ▶ Module features an integral short-circuit loop isolator

TECHNICAL SPECIFICATIONS		
SUPPLY VOLTAGE		Loop Powered - 17 V to 30 V DC
LOOP CURRENT - QUIESCENT (I <sub>q</sub> )		1.4 mA (1 ch.) - 1.5 mA (2 ch.) - 1.6 mA (3 ch.)
LOOP CURRENT - ALARM		IQ+ 1.2 mA for each I/P in alarm
LOOP CURRENT - SHORT-CIRCUIT		IQ+ 1.4 mA max.
LOOP CURRENT - OPEN CIRCUIT		IQ+ 1.0 mA max.
LOOP CURRENT - OUTPUT		IQ+ 1.1 mA for each O/P activated
OUTPUT RELAY CONTACT RATING		2 A 30 V DC / 0.5 A 125 V AC
MAX. CABLE SIZE		2.5 mm <sup>2</sup>
CASE MATERIAL		ABS
OPERATING TEMPERATURE		-10°C to 50°C
MAX. HUMIDITY		95% RH Non-Condensing
DIMENSIONS		90 (L) x 150 (W) x 32 (H) mm
WEIGHT		216 g - boxed
ORDER CODE		
3 I/O PLUS - 1 CHANNEL	1328-CPR-0542	ADDRESSABLE SINGLE I/O MODULE - W/ ISOLATOR - W/ DUAL GANG BOX
3 I/O PLUS - 2 CHANNEL	1328-CPR-0543	ADDRESSABLE DOUBLE I/O MODULE - W/ ISOLATOR - W/ DUAL GANG BOX
3 I/O PLUS - 3 CHANNEL	1328-CPR-0544	ADDRESSABLE TRIPLE I/O MODULE - W/ ISOLATOR - W/ DUAL GANG BOX





# 3 I/O PLUS

MANUAL - 12/2016

## Addressable Triple Input/Output Module



### GLOBAL FIRE EQUIPMENT S.A.

Sítio dos Barrabés, Armazém Nave Y, Caixa Postal 908-Z, 8150-016 São Brás de Alportel - PORTUGAL  
Tel: +351 289 896 560 • Sales: sales@globalfire.pt • Technical Support: techs@globalfire.pt • www.globalfire.pt

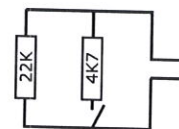
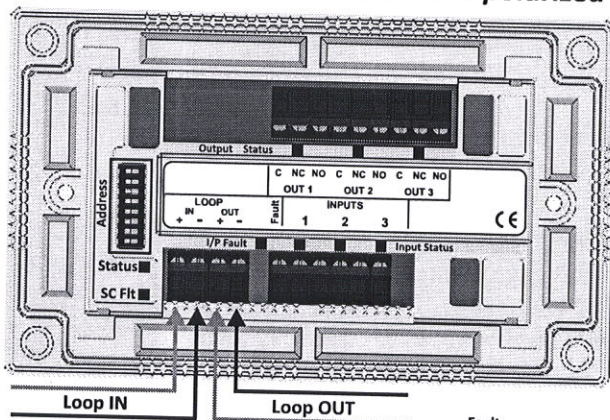
### TECHNICAL SPECIFICATIONS

SUPPLY VOLTAGE	Loop Powered 20 V to 30 V DC
LOOP CURRENT - QUIESCENT ( $I_0$ )	1.4 mA (1 ch.) - 1.5 mA (2 ch.) - 1.6 mA (3 ch.)
LOOP CURRENT - ALARM / SHORT-CIRCUIT	$I_0$ +1.2 mA for each I/P in alarm / $I_0$ +1.4 mA max.
LOOP CURRENT - OPEN CIRCUIT	$I_0$ +1.0 mA max.
LOOP CURRENT - OUTPUT ACTIVE	$I_0$ +1.1 mA for each O/P activated
OUTPUT RELAY CONTACT RATING	2 A 30 V DC / 0.5 A 125 V AC
MAX. CABLE SIZE	2.5 mm <sup>2</sup>
COLOUR / CASE MATERIAL	White & Transparent / ABS
OPER. TEMPERATURE / MAX. HUMIDITY	-10°C to 50°C / 95% RH Non-Condensing
DIMENSIONS / WEIGHT	150 (W) x 90 (L) x 32 (H) mm / 216 g inc. packaging

ORDER CODE	CERTIFICATE	DESCRIPTION
3 I/O PLUS - 1 CHANNEL	1328-CPR-0542	ADDRESSABLE SINGLE I/O MODULE - W/ ISOLATOR - W/ DUAL GANG BOX
3 I/O PLUS - 2 CHANNEL	1328-CPR-0543	ADDRESSABLE DOUBLE I/O MODULE - W/ ISOLATOR - W/ DUAL GANG BOX
3 I/O PLUS - 3 CHANNEL	1328-CPR-0544	ADDRESSABLE TRIPLE I/O MODULE - W/ ISOLATOR - W/ DUAL GANG BOX

### CONNECTIONS

Device is polarized



#### INPUT

Monitored for Open and Short-Circuit  
- Can be driven by Conventional Panel's Zone Repeater Outputs. Each I/P should be fitted with 22 K Ohm end-of-line resistor. Fire Condition set with 4.7 K Ohms resistor in parallel with e.o.l. resistor.

#### OUTPUT

The relay output provided is a latching relay. In order to reset it apply reset to the panel or alternatively remove power to the panel and re-apply. After a few seconds the relay will revert to its default position.

#### Input Resistance values

END OF LINE MONITORING RESISTOR 22K  
ALARM RESISTOR (4K7) IN SERIES WITH NORMALLY OPEN CONTACT

#### Fault

Short circuit - < 2K2  
Open Circuit - > 47K  
Normal - 8K2 to 47K  
Fire - 2K2 to 8K2

### REPORTING DETAILS

In order to indicate the status of the module's working condition, the following LEDs are provided:

**Status:** This LED will flash Green, every time the address associated with the module is polled by the addressable panel.

**Input Status:** An I/P status Red LED is provided for the input. This Red LED will be illuminated continuously whenever there is a FIRE condition present at the input terminals. The analogue value reported by the module in this state is 64.

**Output Status:** An O/P status Red LED is provided for the output. This Red LED will be illuminated continuously whenever the output relay is activated.

**Fault:** This Yellow LED will be activated whenever there is either an open or short circuit fault on that particular input. If there is an open or short circuit condition, the analogue value reported to the addressable panel is 4.

**SC Fault:** This Yellow LED will be ON when there is a short circuit in the loop.



-----:
   
ORDIN DE PLATA NR.: 167 TIP.DOC. 1 :
   
DATA EMITERII:21 noiembrie 2018 :
   
=====
   
PLATITI: 8000-00 LEI: Opt Mii lei 00 bani :
   
=====
   
PLATITOR: (R) "ARSCOM" S. CONTUL DE PLATI/CODUL IBAN :
   
R.L. MD76ML000000002251832717 :
   
CODUL FISCAL :1003600034627 / :
   
=====
   
PRESTATORUL PLATITOR CODUL BANCII:
   
BC"Moldindconbank"S.A. suc."Telecomtrans" Chisinau :MOLDMD2X332:
   
=====
   
BENEFICIAR (R) Directia Ge CONTUL DE PLATI/CODUL IBAN :
   
nerala pentru Administrarea C MD12TRPCAA518410A00604AA :
   
ladirilor Guvernului RM CODUL FISCAL :1006601001045 / :
   
=====
   
PRESTATORUL BENEFICIAR CODUL BANCII:
   
Ministerul Finantelor - Trezoreria de Stat :TREZMD2X :
   
=====
   
DESTINATIA PLATII:/P102/8000,00 Pentru g: TIPUL TRANSFERULUI :
   
arantia pentru oferta la COP nr. 2100106: NORMAL/URGENT :N:
   
5 din 23.11.2018 :
   
:
   
:
   
:
   
:
   
:
   
:
   
=====
   
CODUL TRANZACTIEI:101:
   
DATA PRIMIRII:21/11/2018 : SEMNATURILE :
   
DATA EXECUTARII: : EMITENTULUI :
   
-----:
   
CONducator:Web "ARSCOM"S.R.L. Director :
   
MIIGdAYJKoZIhvcNAQcCoIIGZTCCBmECAQEExCzAJBgUrDgMCGGUAMAsGCSqGSIB3:
   
DQEHAaCCBH0wggR5MIIDYaADAgECAhNHAABXDcrj81Mp95wXAAAAAFcNMAOGCSqG:
   
SIB3DQEBcWUAMCIxIDAeBgNVBAMTF0NFULQxLUNBLU1vbGRpbmRjb25iYW5rMB4X:
   
DTE4MTEExNjA4NDQyN1oXDTIwMTEExNjA4NTQyN1owgbAxCzAJBgNVBAYTAk1EMRAW:
   
YDVQIQIEwdNT2xkb3ZhmREwDwYDVQQHEWhDaGlzaW5hdTETMBEGA1UEChMKQVJT :
   
-----:
   
(semnatura electronica) :
   
CONTABIL-SEF:Web "ARSCOM"S.R.L. Director :
   
MIIGdAYJKoZIhvcNAQcCoIIGZTCCBmECAQEExCzAJBgUrDgMCGGUAMAsGCSqGSIB3:
   
DQEHAaCCBH0wggR5MIIDYaADAgECAhNHAABXDcrj81Mp95wXAAAAAFcNMAOGCSqG:
   
SIB3DQEBcWUAMCIxIDAeBgNVBAMTF0NFULQxLUNBLU1vbGRpbmRjb25iYW5rMB4X:
   
DTE4MTEExNjA4NDQyN1oXDTIwMTEExNjA4NTQyN1owgbAxCzAJBgNVBAYTAk1EMRAW:
   
YDVQIQIEwdNT2xkb3ZhmREwDwYDVQQHEWhDaGlzaW5hdTETMBEGA1UEChMKQVJT :
   
-----:
   
L.S. (semnatura electronica) :
   
CONducator: \_\_\_\_\_:
   
(semnatura manuala) :
   
CONTABIL-SEF: \_\_\_\_\_:
   
(semnatura manuala) :
   
SEMnatura PRESTATORUL L.S. :
   
-----:
   
MOTIVUL REFUZULUI : L.S. :
   
-----:





REPUBLICA MOLDOVA

# LICENȚĂ

Seria A MMII

Nr. 052277

Denumirea autorității de licențiere

Camera de Licențiere

Denumirea, forma juridică de organizare, sediul  
(adresa juridică) a titularului de licență

**Societatea cu Răspundere Limitată  
"ARSCOM"**

mun. Chișinău, str. N. Zelinski, 34/2,  
ap. (of.) 8

Data și numărul certificatului de  
înregistrare de stat a titularului de licență

13.09.2005 MD 0036457

Numărul de înregistrare  
a întreprinderii sau IDNO

1003600034627

Codul fiscal

Genul de activitate, integral sau parțial,  
pentru a cărui desfășurare se eliberează licența

**\* Montarea și reglarea, asistența tehnică a  
sistemelor automate de semnalizare și de  
stingere a incendiilor, precum și de protecție a  
clădirilor împotriva fumului și de înștiințare  
în caz de incendiu \***

Data eliberării licenței

07 JUL 2016

Valabilă pînă la

07. IUL. 2021

Semnătura conducătorului  
autorității de licențiere

Director interimar al Camerei de Licențiere

Octavian BODIȘTEANU



Notă: Licența este valabilă numai cu anexa autenticată de autoritatea de licențiere,  
în care sînt indicate condițiile de licențiere pentru genul de activitate specificat în licență.

# ANEXĂ LA LICENȚA

Seria A MMII

Nr. 052277

Titular de licență Societatea cu Răspundere Limitată "ARSCOM"

Titularul de licență este obligat să respecte următoarele condiții de licențiere pentru desfășurarea activității:

**\*\* Montarea și reglarea, asistența tehnică a sistemelor automate de semnalizare de stingere a incendiilor, precum și de protecție a clădirilor împotriva fumului și de înștiințare în caz de incendiu \*\***

1. Desfășurarea activității licențiate în conformitate cu cadrul legislativ și normativ.
2. Respectarea normelor sanitare, antiincendiar și de protecție a muncii.

Activitatea licențiată se desfășoară pe adresa:

mun. Chișinău, str. A. Hâjdeu, 66

(specialiști: Basoc Serghei, Lazarev Gheorghe)

\*\*\*\*\*



L.Ș.

Notă: Anexa și copiile ei sînt valabile numai cu ștampila originală a autorității de licențiere.

ORDIN DE ANGAJARE NR.4A/2015

COMPANIA «ARSCOM»SRL

Din 02.06.2015

Cu privire la numirea in functie

In conformitate cu art.45 Codului Muncii al RM:

1. Se angajaza Slipcenco Andrei in functie ingener-sef cu retribuirea lunara potrivit schemei de incadrare a personalului.
2. Temei-cererea personala din 02.06.2015

Director / Sevcenco V.



A handwritten signature in black ink, appearing to be "V. Sevcenco".

Semnatura

Am luat cunostinta cu prezentul ordin:

Slipcenco A.

A handwritten signature in black ink, appearing to be "A. Slipcenco".

Semnatura

N.P.



A handwritten signature in blue ink, appearing to be "V. Sevcenco".



## Declarație privind asigurarea garanției lucrărilor

Prin prezenta, Compania “Arscom” SRL vă informează că garanția pentru toate lucrările propuse în cadrul Procedurii de Licitatie publică nr. 21001065 din 24.11.2018 de către “Direcția generală pentru administrarea clădirilor Guvernului Republicii Moldova “ privind “Reparația sistemului de semnalizare antiincendiară cu racordarea la sistemul automatizat de evacuare a fumului la clădirea administrativă din str. A. Russo, nr.1, mun. Chișinău” va fi **1 an**.

Cu respect ,

Adminstrator: Șevcenco Valentina



22/11/2018

