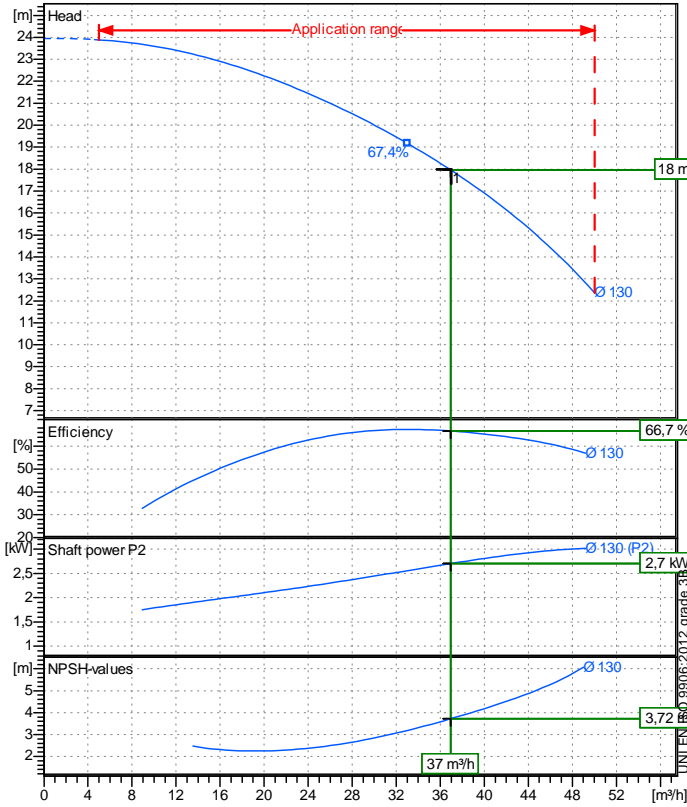


Receiver

From

 Company name
 Respons. Department
 Person in charge
 Phone number
 Fax no
 E-mail address


Operating data specification

Nominal flow	m ³ /h 37
Nominal head	m 18
Static head	m 0
NPSH - v value of plant	m 0
Inlet pressure	bar 0,09793
Fluid	Water, pure
Operating temperature t A	°C 120
Density at t A	kg/dm ³ 0,9983
Kin. viscosity at t A	mm ² /s 1,005

Pump

Pump name		L2P-50-125Ø 130		
Size		340 mm		
Design		0,4		
Speed	1/min	2900	No of stages	1
Impeller type		Radial impeller		
Flow	Nominal	m ³ /h	37	
	Max-	m ³ /h	50	
	Min-	m ³ /h	5	
Head	Nominal	m	18	
	Max-	m	23,9	
	Min-	m	12,4	
Head H(Q=0)		m 23,9		
NPSH 3%		m 3,72		
Max. working pressure		bar 2,44		
Shaft power		kW 2,7		
Efficiency		% 66,7		
Max absorbed power		kW 3,0164		

Materials Pump

Shaft end	Stainless steel AISI 431 (1.4057)		
Impeller	Cast iron EN-GJL-250		
Pump body	Spheroidal Cast iron EN-GJS-500		
Seal disc	Spheroidal Cast iron EN-GJS-500		
Gasket	Aramidic fiber		
Mechanical seal	AQ1EG(Gra+antimony/Sic/EPDM)		

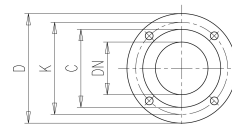
Motor	Manufacturer / Type	SAER	100-2P-4	
Efficiency	IEC 60034-30	IE3		
Rated power	kW 3	Efficiency 4/4	87,7 %	
Number of poles	2	Frame size	100	
Electric current	A 6,1 A	Speed	1/min	2898
Electric voltage	V 400 V	3~	Hz	50
Starting mode	Unknown			
Degree of protection	IP 55	Insulation class	F	

Remarks:

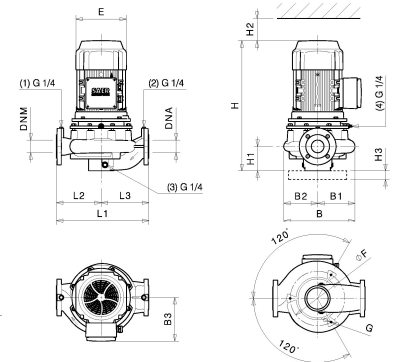
Project	Project ID	Created by	Created on	Last update
			2024-05-10	

Dimensions in mm

- B 238
- B1 128
- B2 110
- B3 184
- E 196
- F 180
- G M10
- H 575
- H1 115
- H2 100
- H3 40
- L1 340
- L2 160
- L3 180



- | | |
|--------------|-----------|
| C 102 | C 102 |
| D 165 | D 165 |
| DN 50 | DN 50 |
| K 125 | K 125 |
| n° 4 x 19 mm | 4 x 19 mm |

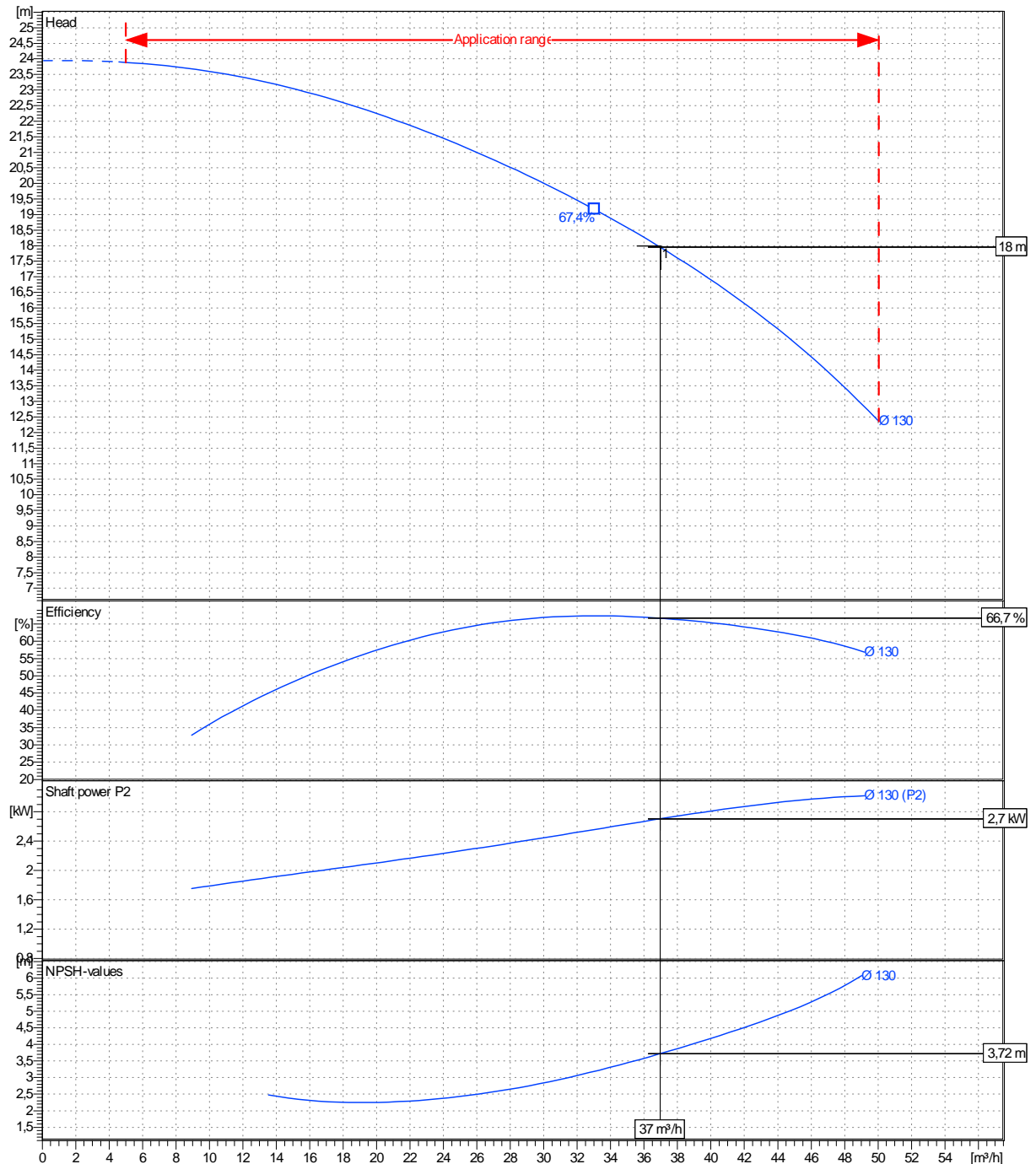


Receiver	From
Company name	
Respons. Department	
Person in charge	
Phone number	
Fax no	
E-mail address	

Operating area	Flow	Head	Impeller type	Radial impeller
Operating data specification	37 m ³ /h	18 m	Impeller construction	Closed
Pump data	37 m ³ /h	18 m	Sense of rotation	Clockwise from the drive end
			Outlet width	DN50
	Speed	1/min	2900	
	Frequency	Hz	50 Hz	
	Min. m ³ /h	Max. m ³ /h	η Max. m ³ /h	H(Q=0) m
	5	50	33	23,9
	P2(Q=0) kW	Max. kW	η Max. kW	
	3,02	2,56		

Performance data based to: Water, pure [100%]; 120°C; 0,998kg/dm³; 1mm²/s

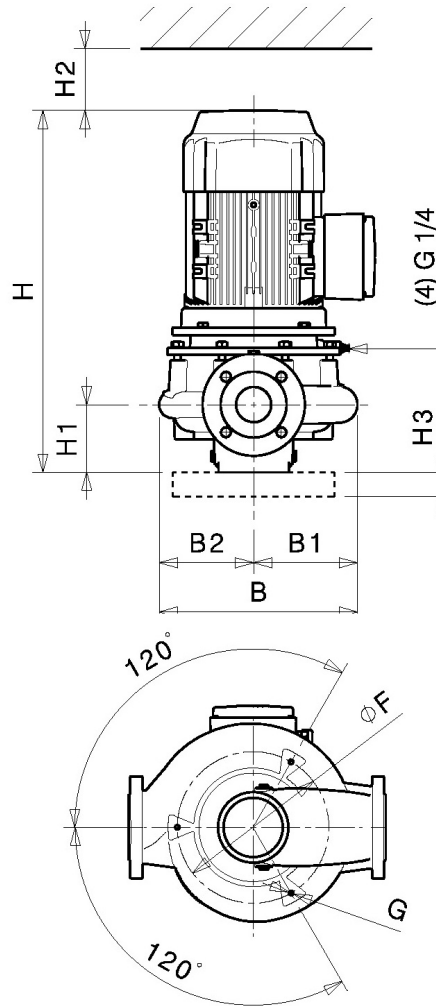
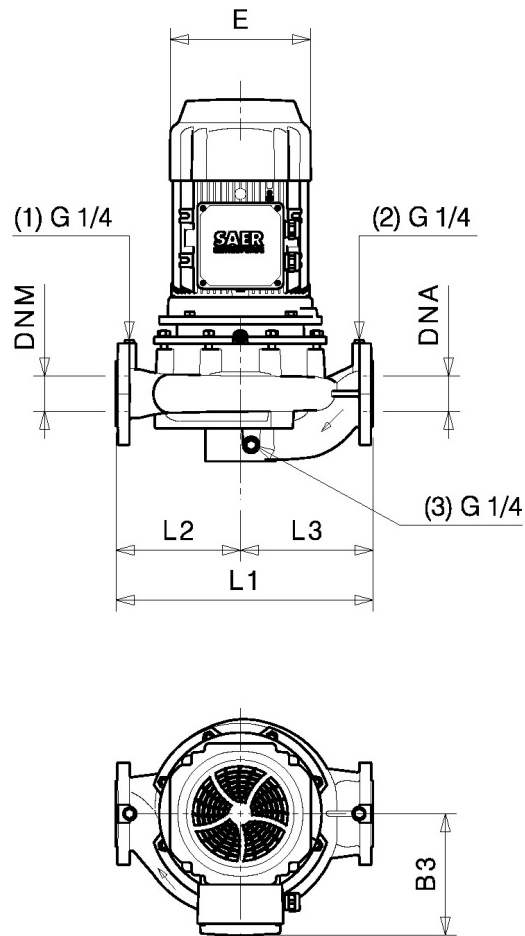
UNI EN ISO 9906:2012 - Grade 3B



Project	Project ID	Created by	Created on	Last update
			2024-05-10	

Revision no

Pump dimensions



Connections

Suction side DN50 PN10 / PN16	Discharge port DN50 PN10 / PN16
-------------------------------------	---------------------------------------

Dimensions in mm

B	238
B1	128
B2	110
B3	184
E	196
F	180
G	M10
H	575
H1	115
H2	100
H3	40
L1	340
L2	160
L3	180

Disegni dimensionali e immagini non vincolanti. Saer si riserva il diritto di effettuare cambiamenti senza alcun preavviso.
Dimensional drawing and picture are not binding. Saer reserves the right to make changes without prior notice.

Project

Project ID

Created by

Created on
2024-05-10

Last update