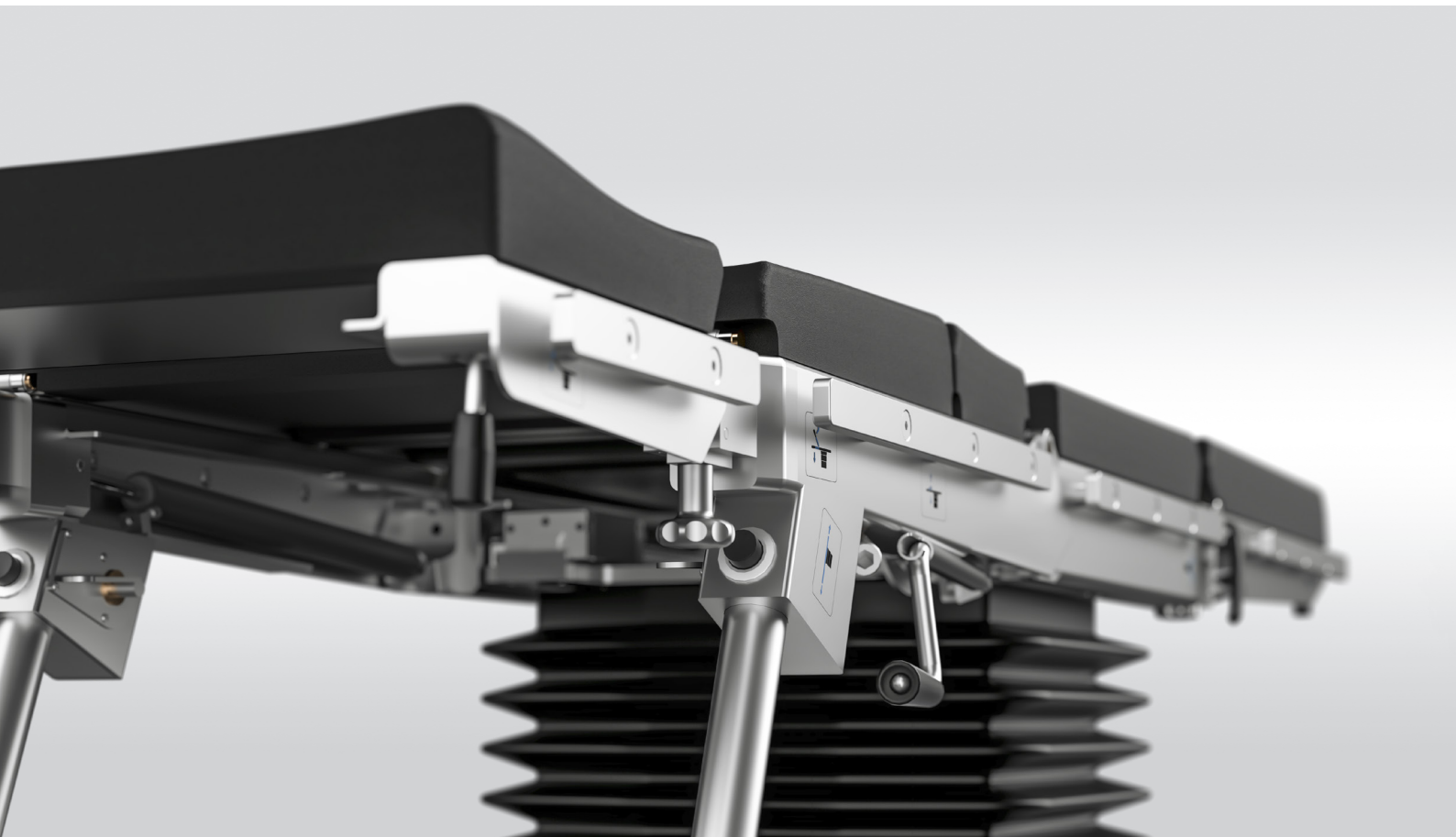




Operating Tables

FENIX OT-01

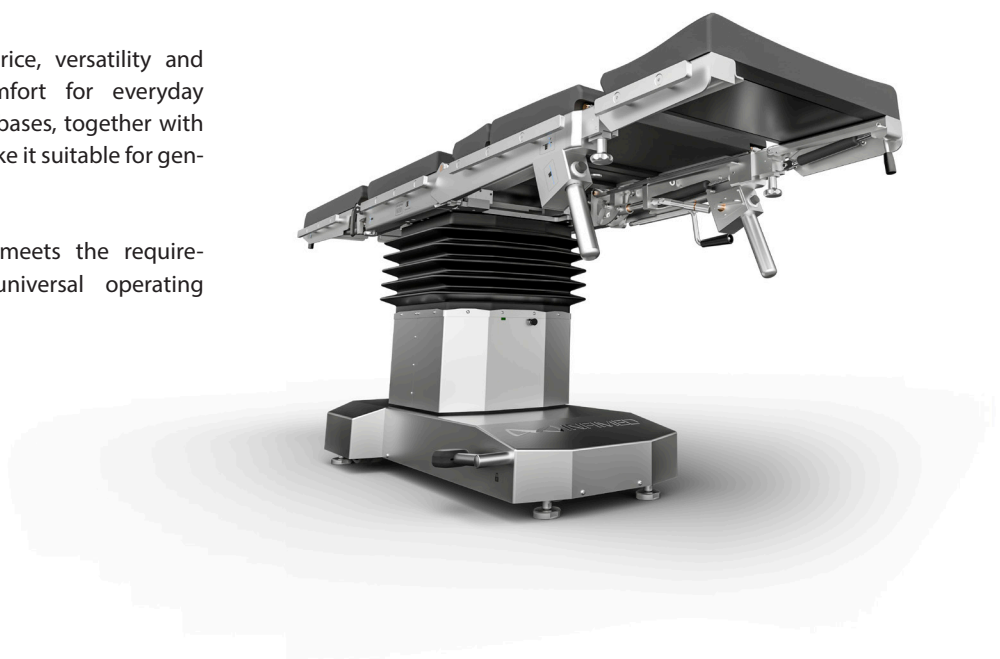
VIVAX OT-02



Quality
Cost Effectiveness
Versatility

Outstanding quality for reasonable price, versatility and functionality ensure operational comfort for everyday surgical work. Optional table tops and bases, together with wide range of additional accessories make it suitable for general and specialist surgical procedures.

Adjustment possibilities and ranges meets the requirements demanded by a modern universal operating tables.



OT-01 / OT-02



Operating table VIVAX with optional "Super mobile" base



Operating table VIVAX with standard "T" base

Design

Standard "T" base with 5 antistatic castors, (4 rear castors in 2 pairs and directional one in the front), with foot operated central brake.

Optionally available base "Super mobile" for enhanced manoeuvrability and better access to the operating field, thanks to 4 antistatic castors diam. 125 mm. Driving system with foot operated central brake and directional castor.

The elements of the table top, base and column covers are made of matt polished stainless steel, which makes the surfaces smooth and hygienic. The covers are impact resistant, easy to clean, prevent fluid ingress, minimizing infection risk.

High quality, ergonomically profiled, antistatic mattresses made of polyurethane foam of thickness 50 mm. Easy removable, with antibacterial protection, seamless, ensure maximum hygiene and prevent against cross contamination.

Table tops for general surgeries:



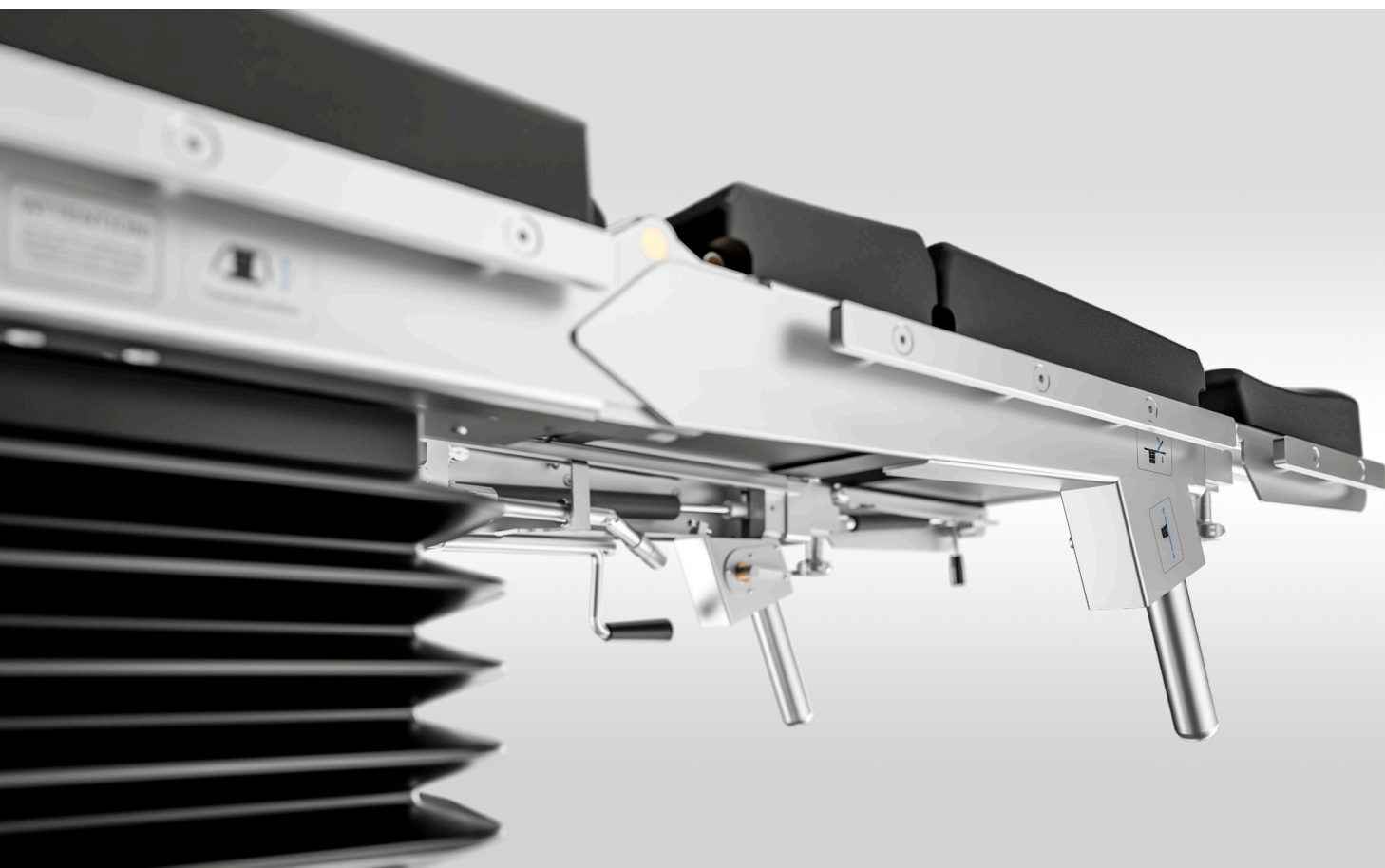
Modular table top



5 section table top



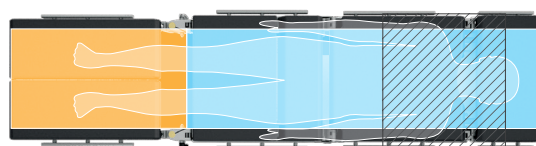
4 section table top




Imaging Flexibility


Multisectional (4,5 or 6 sectioned) table tops, full-length C-Arm radio translucent.

Superior imaging is ensured by full length X-ray cassette tunnel (except foot sections), with possibility of inserting the cassette from both sides, head rest and foot rests interchange and longitudinal slide (350 mm).



 X-ray cassette tunnel and access to C-arm

 Access to C-arm only

 Table column - no access to C-arm

Schemes description

Table top moved to the head side, interchanged head and foot sections

OT-01 / OT-02

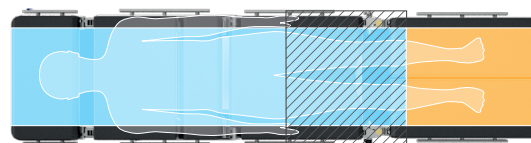
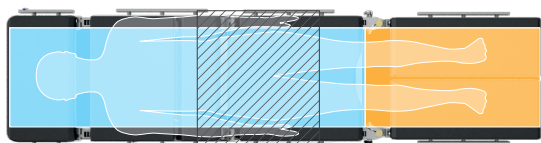


Table top moved to the foot side



Table top moved to the head side



Trendelenburg position



Elevated backrest, lowered footrests position

Features

- Battery powered, with charger built-in the base.
- Unique software providing smooth and precise table movements.
- Superior electro- hydraulic system, with technical solutions of the world leading micro-hydraulics provider.



INFIMED OPERA Control System

Controls

- Robust wire controller with visual battery level indication, ideal for simple, intuitive control (standard)
- Wire controller with LCD screen (option)
- Wireless controller (option)
- Sensor side control panel on the table column (option)
- LCD side control panel on the table column (option)
- Foot controller.
- Wall control panel (OPERA system).



Wire controller



Wire controller with LCD screen

OT-02



Kidney bridge position



Beach chair position

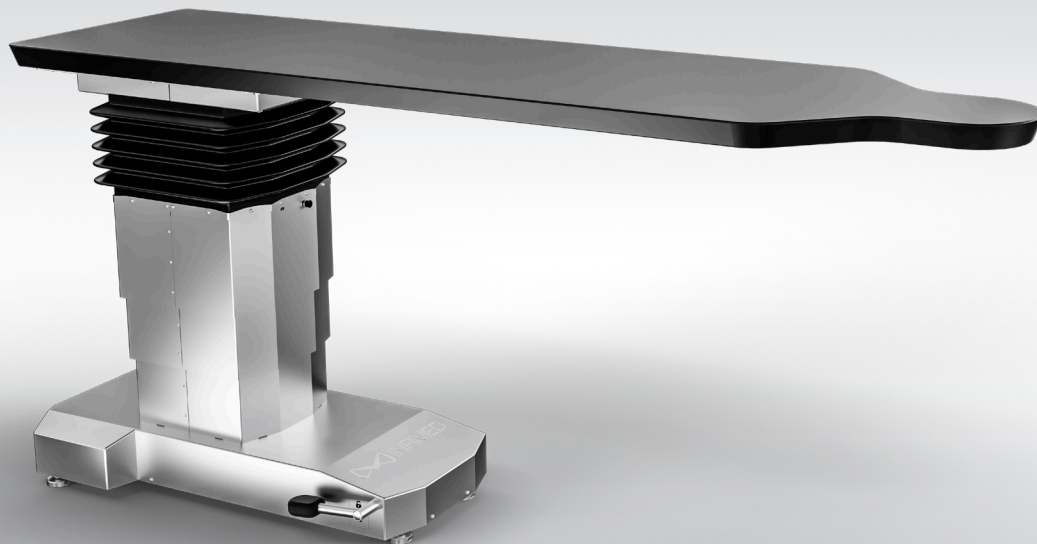
- Optional override control system, mechanic-hydraulic, used in case of corded hand control damage, failure of drive or main control system.
- Range of table movements controlled via electro-hydraulic drive:
 - Height adjustment,
 - Table top tilts: lateral and longitudinal (Trendelenburg and Rev- Trendelenburg),
 - Back rest section and kidney bridge (option),
 - Longitudinal slide (option)
 - Central brake (option).
- Adjustment angles of 40° Trendelenburg/ Rev Trendelenburg and and 30° tilt make it ideal solution for minimally invasive procedures.
- Range of table movements controlled mechanically or gas spring supported:
 - Backrest section and kidney bridge,
 - Footrest sections,
 - Headrest sections,
 - Longitudinal slide.



Sensor side control panel



LCD side control panel



Specialized angiography operating table VIVAX OT-02

Application:

Operations with simultaneous radiolucency of the operating field: intraoperative radiology and angiography, heart and vascular surgery.

Main Features:

- Standard "T" base with central brake.
- Carbon fibre table top, ensuring maximum X-ray transparency and unrestricted access for C-arm
- Range of table movements controlled via electro-hydraulic drive:
 - Height adjustment
 - Table top tilts: lateral and longitudinal (Trendelenburg and Rev-Trendelenburg)
 - Longitudinal slide (option)
 - Lateral slide (option)

- Range of table movements controlled mechanically or gas spring supported:

- Central brake

Controls

- standard wire controller
- joystick (option)



Joystick

OT-02

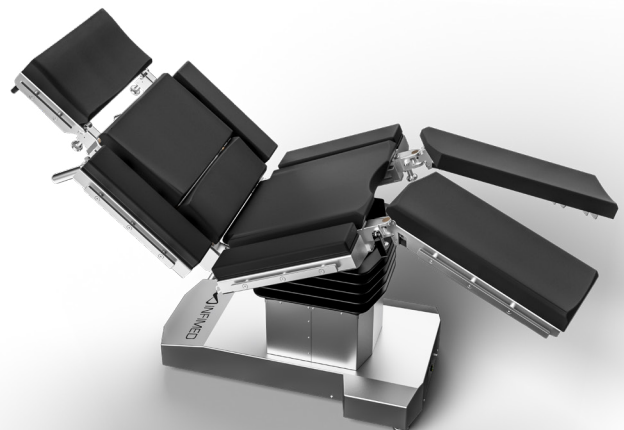


Specialized bariatric operating table VIVAX OT-02

Application: Bariatric operations of patients weighing up to 450 kg.

Main Features:

- Standard "T" base with central brake.
- Table-top with increased width, using special extensions, in order to support heavy patients.
- Range of table movements controlled via electro-hydraulic drive:
 - Height adjustment
 - Table top tilts: lateral and longitudinal (Trendelenburg and Rev-Trendelenburg)
 - Back rest section
 - Longitudinal slide
 - Kidney bridge (for 5,6 sections table-tops),
 - Central brake
- Range of table movements controlled mechanically or gas spring supported:
 - Foot rest sections
 - Head rest section





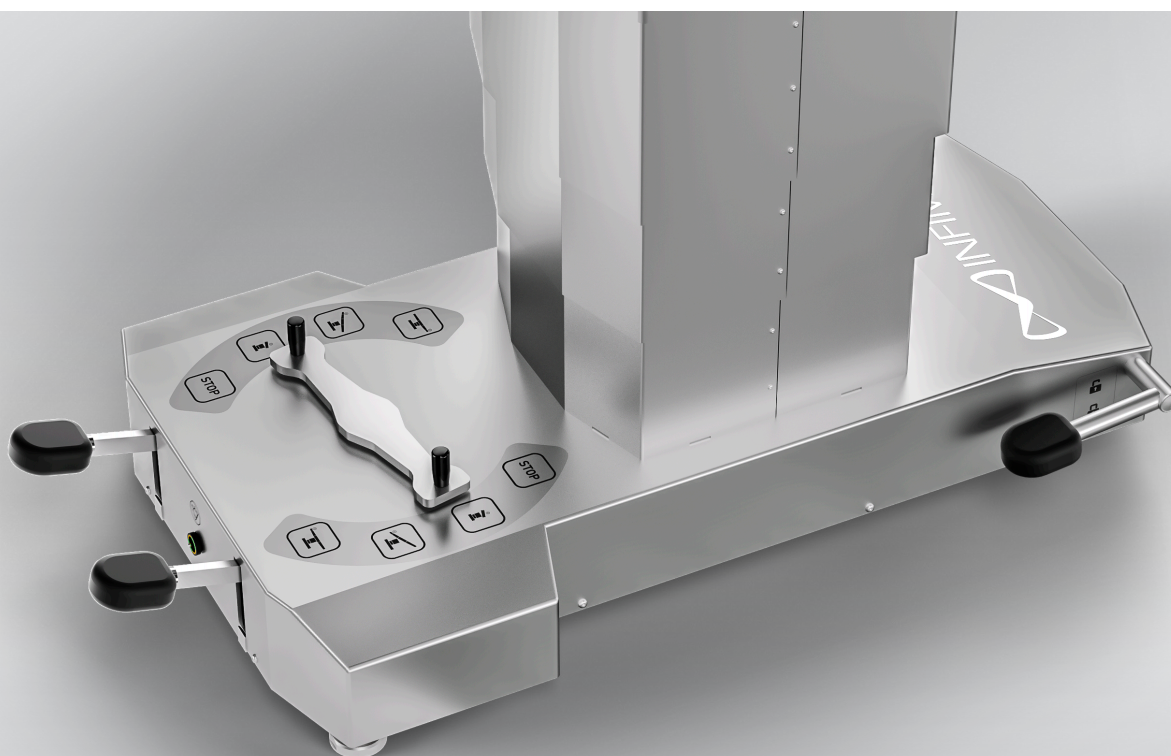
Specialized orthopaedic operating table VIVAX OT-02

Application: Orthopaedic, traumatology, shoulder surgeries.

Main Features:

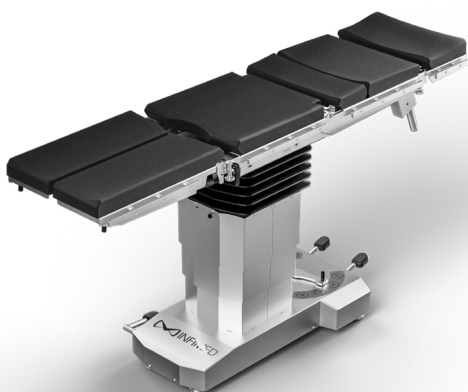
- Standard "T" base with central brake.
- Table-top with fully detachable shoulder sections for unrestricted surgical access, with horseshoe headrest.
- Orthopaedic attachment fixed in place of the foot rest sections.
- Range of table movements controlled via electro-hydraulic drive:
 - Height adjustment
 - Table top tilts: lateral and longitudinal (Trendelenburg and Rev-Trendelenburg)
 - Back rest section and longitudinal slide (options)
- Range of table movements controlled mechanically or gas spring supported:
 - Back rest section
 - Headrest section
 - Central brake





Features

- Powered by hydraulic system, operated via foot position selector and foot levers,
- Height and table top tilts adjustment available from head end enabling easy operation by the hospital staff



Controls




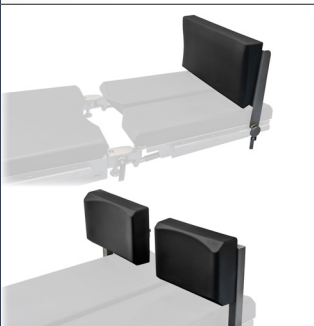




- Range of table movements controlled hydraulically:
 - Height adjustment,
 - Table top tilts: lateral and longitudinal (Trendelenburg and Rev-Trendelenburg).
- Range of table movements controlled mechanically or gas spring supported:
 - Back rest section and kidney bridge,
 - Footrest sections,
 - Headrest sections,
 - Longitudinal slide (option).

Examples of additional accesories for opearating tables *







| | | | |
|---|---|--|---|
|  |  |  |  |
| EB-01 One position clamp | EB-02 Multi position clamp | EB-03 Knee support | EB-04 Angle arm support |
|  |  |  |  |
| EB-05 Arm support | EB-06 Thigh holder | EB-07 Side-shoulder support | EB-08 Side support |
|  |  |  |  |
| EB-09 Anesthetic frame | EB-10 Anesthetic frame with adjustable width | EB-11 Infusion holder | EB-12 Hand/shank holder |
|  |  |  |  |
| EB-13 Support for meniscus operation | ES-01 Leg strap ES-02 Thigh strap | ES-03 Abdominal strap | ES-04 Hand/wrist strap |

Additional Accesories

Examples of additional accesories for opearating tables *

| | | | |
|---|---|--|---|
|  |  |  |  |
| ES-05 Gyneacological bowl | ES-06 Urological bowl | ES-07 Holder for additional equipment | ES-08 Holder for arm operations |
|  |  |  |  |
| ES-09 Holder for tubes | ES-10 Tray for additional accessories | ES-11 X-ray tray | ES-12 Chest support |
|  |  |  |  |
| ES-13 Attachment for knee operations | ES-14 Pubic support | ES-15 Leg support, not-divided ES-21 Leg support, divided | ES-16 Proctological attachment |
|  |  |  |  |
| ES-20 Side extension for bariatric tabletop | EN-01 Specialistic head rest with adjustable track | EN-02 Specialistic head rest, horseshoe | DORO neurosurgical attachment |

Examples of additional accesories for opearing tables *

| | | | |
|---|---|--|---|
|  | |  |  |
| EO-01 Orthopaedic attachment with two extension devices and support roll | | EO-02 Bar suport | EO-03 Leg support |
|  |  |  |  |
| EO-04 Support for plastering | EO-05 Heel holder EO-06 Foot support | EO-07 Clamp for orthopaedic attachment supports | EO-08 Knee operation attachment for orthopedic attachment |
|  |  |  |  |
| EO-09 Hip support for lateral decubitus position | EO-10 Support for orthopedic attachment arms | EO-11 Knee support for side positions | EO-12 Trolley for installation of orthopedic attachment |
|  |  |  |  |
| EO-13 Mobile stand for orthopedic accesories | EO-14 Leather shoes for orthopedic attachment | EO-20 Attachment for hand operating | EO-30 Attachement for shoulder operations with head rest EN-02 |

Technical parameters

| Technical parameters of operating tables INFIMED VIVAX | OT-02 standard | OT-02 angiography version | OT-02 bariatric version |
|---|------------------------|---------------------------|-------------------------|
| Total length of the table with 4, 5 sections, modular, orthopedic and bariatric table tops | 2100 mm | ----- | 2100 mm |
| Total length of the table with 6 sections table top | 2300 mm | ----- | 2300 mm |
| Total length of the table carbon fibre table top | ----- | 2200 mm | ----- |
| Table top width (without / with side rails) | 500 mm / 560 mm | 600 mm | 800 mm/ 860 mm ** |
| Standard height adjustment, with mattress 50 mm (electro-hydraulic) | 730 mm – 1080 mm | ----- | 730 mm – 1080 mm |
| Extended height adjustment, with mattress 50 mm (electro-hydraulic) | 700 mm – 1150 mm | ----- | 700 mm – 1150 mm |
| Height adjustment, without mattress (electro-hydraulic), with longitudinal and lateral slide | ----- | 800 mm – 1150 mm | ----- |
| Height adjustment, without mattress (electro-hydraulic), with longitudinal slide | ----- | 730 mm – 1080 mm | ----- |
| Height adjustment, without mattress (electro-hydraulic), fixed | ----- | 660 mm – 1010 mm | ----- |
| Lateral tilts adjustment (electro-hydraulic) | ± 30° | ± 20° | ± 30° |
| Trendelenburg / reverse-Trendelenburg adjustment (electro-hydraulic) | ± 40° | ± 20° | ± 40° |
| Backrest adjustment (pneumatic) | - 45° ; +85° | ----- | ----- |
| Optional backrest adjustment (electro-hydraulic)* | - 35° ; +85° | ----- | - 35° ; +85° |
| Footrest adjustment (pneumatic) | - 90° ; +25° | ----- | - 90° ; +25° |
| Footrest abduction (mechanic) | 180° | ----- | 180° |
| Headrest adjustment (pneumatic) | ± 45° | ----- | ± 45° |
| Kidney bridge adjustment (mechanic) Optional kidney bridge adjustment (electro-hydraulic)* | ~120 mm | ----- | ~120 mm |
| Longitudinal slide (mechanic) Optional longitudinal slide (electro-hydraulic)* | 350 mm | 350 mm | 350 mm |
| Lateral slide (electro-hydraulic)* | ----- | 210 mm | ----- |
| Table mass | 280 kg +/- 10% | 280 kg +/- 10% | 2.... kg +/- 10% |
| Maximum dynamic / static working load | 250 / 300 kg | 250 kg | 450 / 540 kg |
| Built in battery power Built in charger power | 24 V 230V ~ 50/60Hz | 24 V 230V ~ 50/60Hz | 24 V 230V ~ 50/60Hz |
| Working time between battery charging | Up to 65 operations | Up to 65 operations | Up to 65 operations |
| Lifetime | 10 years | 10 years | 10 years |
| Degree, class of protection, application part type | IP-X4 / I / B | IP-X4 / I / B | IP-X4 / I / B |
| Technical parameters of operating tables INFIMED FENIX | | | |
| | OT-01 | | |
| Total length of the table with 4 and 5 sections tabletop | 2100 mm | | |
| Total length of the table with 6 sections tabletop | 2300 mm | | |
| Table top width (without / with side rails) | 500 mm / 560 mm | | |
| Standard height adjustment (hydraulic), with mattress 50 mm | 680 mm – 1030 mm | | |
| Height adjustment (hydraulic), longitudinal slide, with mattress 50 mm | 730 mm – 1080 mm | | |
| Lateral tilts adjustment (hydraulic) | ± 30° | | |
| Trendelenburg / reverse-Trendelenburg adjustment (hydraulic) | ± 40° | | |
| Backrest adjustment (pneumatic) | - 45° ; +85° | | |
| Footrest adjustment (pneumatic) | - 90° ; +25° | | |
| Footrest abduction (mechanic) | max 180° | | |
| Headrest adjustment (pneumatic) | ± 45° | | |
| Kidney bridge adjustment (mechanic), available in 5 or 6 section tabletop | ~120 mm | | |
| Optional longitudinal slide (mechanic) | 350 mm | | |
| Table mass | 250 kg | | |
| Maximum dynamic / static working load | 200 /250 kg | | |

* additional options

** width including side extension for bariatric tabletop ES-20



**European
Funds**
Smart Growth



Polska

European Union
European Regional
Development Fund



For special requirement of the customer it is possible to produce the product with changed technical parameters which do not diminish its safety.

The details given in this catalogue are correct at the time of going to press. Infimed Sp. z o.o., however, reserves the right to improve shown equipment.

adres INFIMED Sp. z o.o.
ul. Kabaty 1,
34-300 Żywiec,
Polska
tel/fax +48 33 861 40 96
email office@infimed.pl
www www.infimed.pl

NIP 553-251-29-67
REGON 243274947
KRS 0000463933

Sąd Rejonowy w Bielsku-Białej, VIII Wydział
Gospodarczy Krajowego Rejestru Sądowego.
Wysokość Kapitału Zakładowego: 500 000 PLN

bank Bank Spółdzielczy
w Węgierskiej Górze
SWIFT POLUPLPR

78 8131 0005 0016 2492 2000 0010 PLN
PL02 8131 0005 0016 2492 2000 0020 EUR
PL23 8131 0005 0016 2492 2000 0030 USD



www.infimed.pl



Accesories for Operating Tables

FENIX OT-01

VIVAX OT-02

ACCESORIES FOR OPERATING TABLES

This catalogue presents the wide range of accessories available for INFIMED operating table.

They were created basing on long experience in designing of medical equipment, hours spent on consultation with medical staff and functional and ergonomy testing.

The accessories haven been sorted according to practical use and surgical disciplines.

Table of contents:

| | |
|--|-----------|
| GENERAL BASIC ACCESORIES | 3 |
| GYNAECOLOGY UROLOGY PROCTOLOGY ACCESORIES | 12 |
| NEUROSURGERY LARYNGOLOGY OPHTHALMOLOGY ACCESORIES | 14 |
| ORTHOPAEDICS TRAUMATOLOGY ACCESORIES | 17 |
| ANGIOGRAPHY ACCESORIES | 22 |
| POSITIONING PADS | 24 |

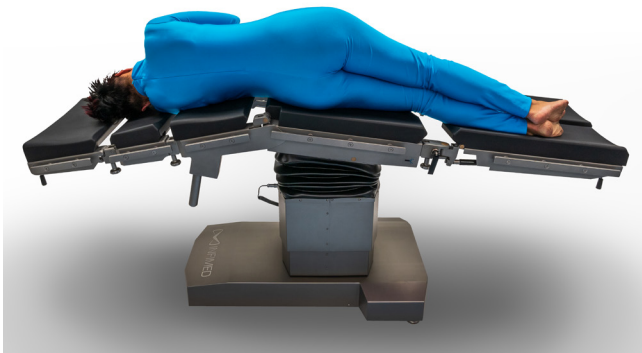
General surgery positions



SUPINE POSITION



BEACH CHAIR POSITION



LATERAL POSITION AND FLEX



EB-01 One position clamp

TECHNICAL INFORMATION:

For fixation of the various accesories with rods of 16 mm diameter to the side rail

Made of stainless steel, with a matt finish



EB-02 Multi position clamp

TECHNICAL INFORMATION:

For fixation of the various accesories with rods of 16 mm diameter to the side rail

Allows radial adjustment of the accesories

Made of stainless steel, with a matt finish



EB-04 Angle arm support

TECHNICAL INFORMATION:

Height adjustment: 300mm

Distance from table top adjustment: 200mm

Tilting adjustment by ball joint

Made of stainless steel with matt finish and polyurethane foam, with two fixing velcro straps

To be fixed with EB-02 clamp



EB-05 Arm support

TECHNICAL INFORMATION:

Height adjustment: 100mm

Made of stainless steel with matt finish and polyurethane foam, with two fixing velcro straps

To be fixed with EB-01 clamp

General Basic Accesories



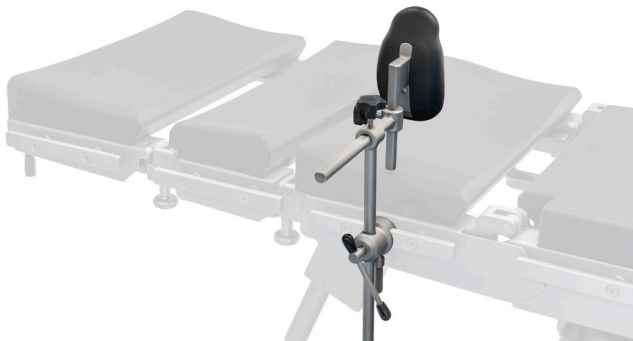
EB-06 Thigh holder

TECHNICAL INFORMATION:

Height adjustment: 300mm

Made of stainless steel with matt finish and polyurethane foam

To be fixed with EB-01 clamp



EB-07 Side-shoulder support (side support position)

TECHNICAL INFORMATION:

Height adjustment: 230mm

Distance from table top adjustment: 150mm

Made of stainless steel with matt finish and polyurethane foam

To be fixed with EB-01 clamp



EB-07 Side-shoulder support (shoulder support position)

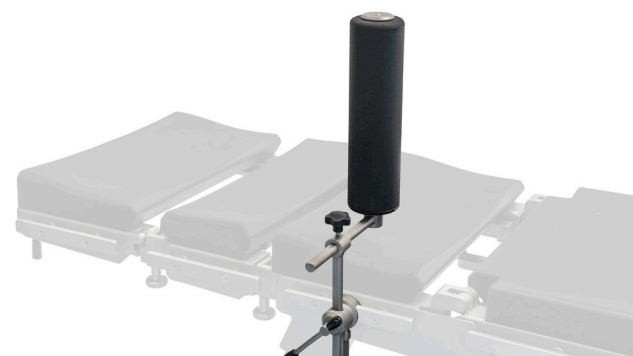
TECHNICAL INFORMATION:

Height adjustment: 230mm

Distance from table top adjustment: 150mm

Made of stainless steel with matt finish and polyurethane foam

To be fixed with EB-01 clamp



EB-08 Side support

TECHNICAL INFORMATION:

Height adjustment: 150mm

Distance from table top adjustment: 150mm

Made of stainless steel with matt finish and polyurethane foam

To be fixed with EB-01 clamp



EB-09 Anesthetic frame

TECHNICAL INFORMATION:

Height adjustment: 600mm

Made of stainless steel with matt finish

To be fixed with EB-01 clamp



EB-10 Anesthetic frame with adjustable width

TECHNICAL INFORMATION:

Height adjustment: 500mm

Both side width adjustment 200mm
Made of stainless steel with matt finish

To be fixed with EB-01 clamp



EB-11 Infusion holder

TECHNICAL INFORMATION:

Height adjustment: 200mm

Made of stainless steel with matt finish

To be fixed with EB-01 clamp



EB-12 Hand (shank holder)

TECHNICAL INFORMATION:

Height adjustment: 300mm

Made of stainless steel with matt finish and polyurethane foam

To be fixed with EB-01 clamp

General Basic Accesories

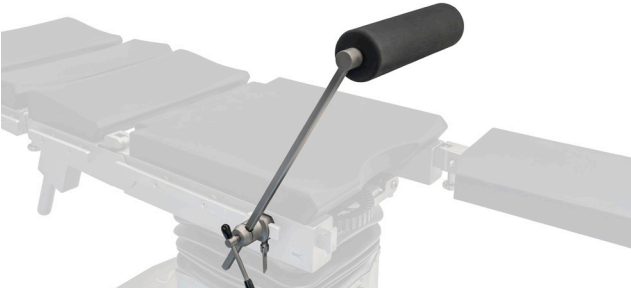
EB-13 Support for meniscus operation

TECHNICAL INFORMATION:

Height adjustment: 600mm

Made of stainless steel with matt finish and polyurethane foam

To be fixed with EB-02 clamp



EB-14 Arm support, with horizontal movement

TECHNICAL INFORMATION:

Height adjustment: 300mm

Distance from tabletop adjustment: 200mm

Tilting adjustment by ball joint

Made of stainless steel with matt finish, HPL, foam mattress covered with antistatic artificial leather, fixing velcro straps
To be used with EB-01 clamp



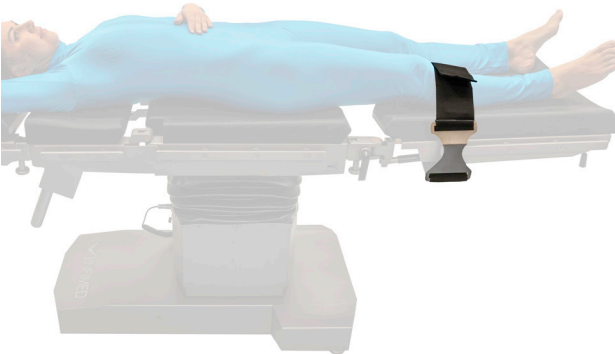
ES-01 Leg strap ES-02 Thigh strap

TECHNICAL INFORMATION:

Adjustment by velcro: 400mm

Strap width: 100mm

Made of stainless steel with matt finish and polyamide strap



ES-03 Abdominal strap

TECHNICAL INFORMATION:

Adjustment by velcro: 400mm

Strap width: 100mm

Made of stainless steel with matt finish and polyamide strap





ES-04 Hand strap

TECHNICAL INFORMATION:

Adjustment by velcro: 400mm

Strap width: 100mm

Made of stainless steel with matt finish and polyamide strap



ES-07 Holder for additional equipment, mobile

TECHNICAL INFORMATION:

Non-marking wheels with brakes

Hooks and rails for assembly of accessories on rack

Basket in basis

Made of stainless steel with matt finish



ES-08 Holder for arm operations

TECHNICAL INFORMATION:

Fixed to side rails of operating table

Vertical adjustment of angle against tabletop
Distance from tabletop adjustment: 100mm

Height adjustable feet

X-Ray permeable tabletop, dimensions 800x400mm

Made of stainless steel with matt finish, foam mattress covered with antistatic artificial leather



ES-09 Holder for tubes

TECHNICAL INFORMATION:

Height adjustment: 200mm

Distance from tabletop adjustment: 200mm

Made of stainless steel with matt finish and HPL

To be fixed with EB-01 clamp

General Basic Accesories



ES-10 Tray for additional accessories

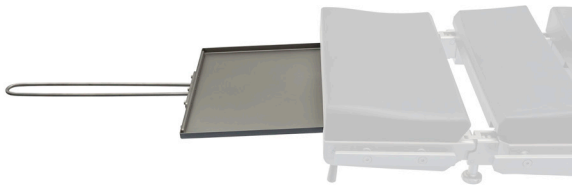
TECHNICAL INFORMATION:

Height adjustment: 400mm

Tray dimensions: 450x250mm

Made of stainless steel with matt finish

To be used with EB-01 clamp



ES-11 X-ray tray

TECHNICAL INFORMATION:

Height adjustment: 400mm

To be used with X-Ray cassette of width 381mm

Installation from head or side

Made of stainless steel with matt finish



ES-12 Chest support

TECHNICAL INFORMATION:

Height adjustment: 150mm

Distance from tabletop adjustment: 150mm

Made of stainless steel with matt finish and polyurethane foam

To be fixed with EB-01 clamp



ES-13 Attachement for knee operation

TECHNICAL INFORMATION:

Height adjustment: 200 mm

Knee holder adjustment

Made of stainless steel with matt finish and polyurethane foam

To be fixed with EB-01 clamp



ES-14 Pubic support

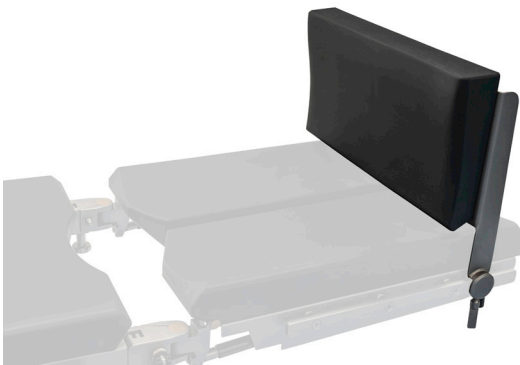
TECHNICAL INFORMATION:

Height adjustment: 150 mm

Distance from tabletop adjustment: 150 mm

Made of stainless steel with matt finish and polyurethane foam

To be fixed with EB-01 clamp



ES-15 Leg support, not-divided

TECHNICAL INFORMATION:

To be fixed to siderails

Made of stainless steel with matt finish and foam mattress covered with antistatic artificial leather

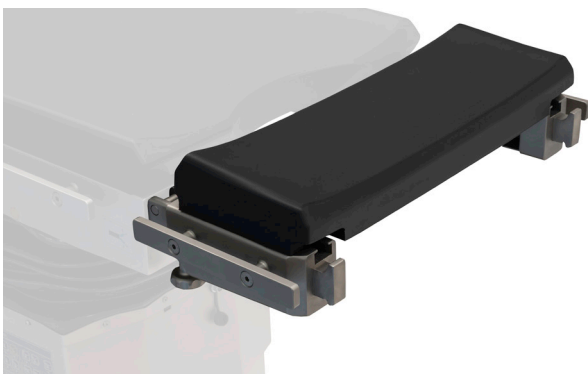


ES-17 Side rail extension

TECHNICAL INFORMATION:

Extension for side rail for mounting side rail accessories

Made of stainless steel with matt finish



ES-18 Tabletop extension

TECHNICAL INFORMATION:

To be fixed to siderails

Made of stainless steel with matt finish, HPL and polyurethane foam

General Basic Accesories



ES-19 Strap for anesthetic frame

TECHNICAL INFORMATION:

To be fixed to anesthetic frame EB-09 or EB-10

Made of polyimide strap

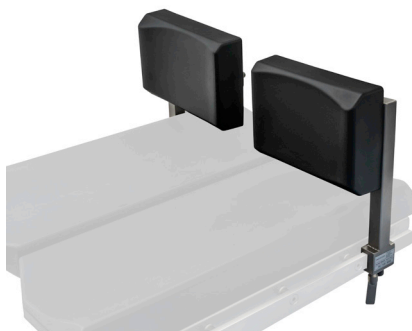


ES-20 Side extension for bariatric table-top

TECHNICAL INFORMATION:

To be fixed to siderails

Made of stainless steel with matt finish, HPL and polyurethane foam with artificial leather



ES-21 Leg support, divided

TECHNICAL INFORMATION:

To be fixed to siderails

Made of stainless steel with matt finish and polyurethane foam



GYNEACOLOGICAL SURGERY



PROCTOLOGICAL (KNEEL) SURGERY

Gynaecology Urology Proctology Accesories



EB-03 Knee support

TECHNICAL INFORMATION:

Height adjustment: 100mm

Made of stainless steel with matt finish and polyurethane foam

To be fixed with EB-02 clamp



ES-05 Gyneacological bowl

TECHNICAL INFORMATION:

Fixed instead of the leg supports

Adjustable horizontal position and rotation

Bowl capacity: 4 litres

Made of stainless steel with matt finish



ES-06 Urological bowl

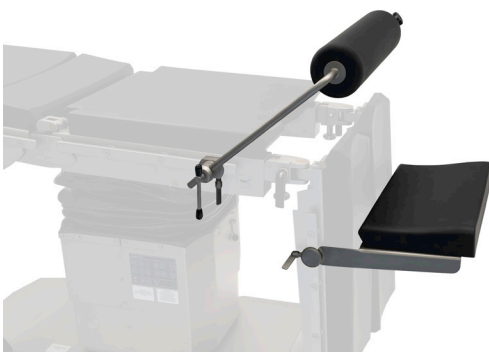
TECHNICAL INFORMATION:

Fixed instead of the leg supports

Adjustable horizontal position and rotation

Bowl capacity: 4 litres, with rubber outflow

Made of stainless steel with matt finish



ES-16 Proctological attachment

TECHNICAL INFORMATION:

Height adjustment: 200mm

Kneeling chair, without clamp, fixed to side rails

Abdominal support to be used with 2 pcs of EB-02 clamps

Made of stainless steel with matt finish, HPL and polyurethane foam



NEUROSURGICAL SURGERY - SUPINE POSITION (WITH DORO NEUROSURGICAL ATTACHEMENT)



NEUROSURGICAL SURGERY - SITTING POSITION (WITH DORO NEUROSURGICAL ATTACHEMENT)

Neurosurgery Laryngology Ophthalmology Accesories



EA-01 Adapter for specialistic head rest

TECHNICAL INFORMATION:

Neccesary to fix to the operating table to use DORO neurosurgical attachment or any of specialistic head rest

Made of stainless steel with matt finish



EN-01 Specialistic head rest with adjustable track

TECHNICAL INFORMATION:

Fixed to the adapter EA-01

Height adjustment 150mm, angle adjustment to the table top

Adjustment of the distance from the tabletop: 250mm

Made of stainless steel with matt finish and polyurethane foam



EN-02 Specialistic head rest, horseshoe

TECHNICAL INFORMATION:

Fixed to the adapter EA-01

Height adjustment 150mm, angle adjustment to the table top

Adjustment of the distance from the tabletop: 250mm

Made of stainless steel with matt finish and polyurethane foam



EN-05 Arm support

TECHNICAL INFORMATION:

Height adjustment: 300mm

Distance from tabletop adjustment: 200mm

Tilting adjustment by ball joint

Made of stainless steel with matt finish, HPL, foam mattress covered with antistatic artificial leather, fixing velcro straps
To be used with EB-01 clamp



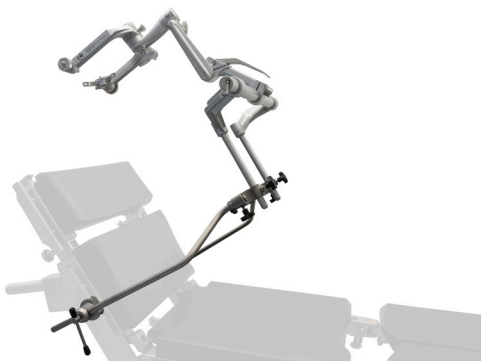
DORO neurosurgical attachment for laying position

TECHNICAL INFORMATION:

To be fixed to adapter EA-01

Including:

- Adjustable Base Unit 3001-00
- Swivel Adaptor 3002-00
- QR3 Skull Clamp 1001.001
- Reusable Skull Pins Pediatric 3004-00 (3 pcs)
- Reusable Skull Pins Adult 3005-00 (3 pcs)



DORO neurosurgical attachment for sitting position

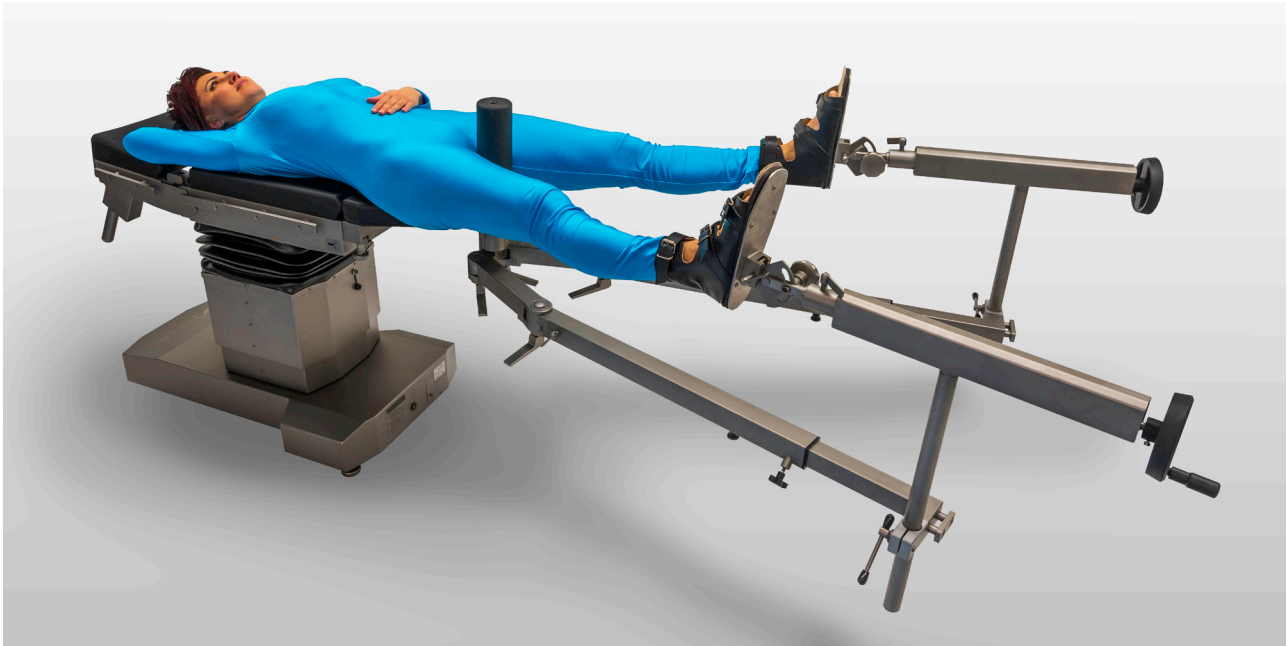
TECHNICAL INFORMATION:

To be fixed to side rails using EB-02 multiposition clamps

Including:

- Adjustable Base Unit 3001-00
- Swivel Adaptor 3002-00
- QR3 Skull Clamp 1001.001
- Reusable Skull Pins Pediatric 3004-00 (3 pcs)
- Reusable Skull Pins Adult 3005-00 (3 pcs)
- Crossbar Adaptor

Orthopaedics Traumatology Positions



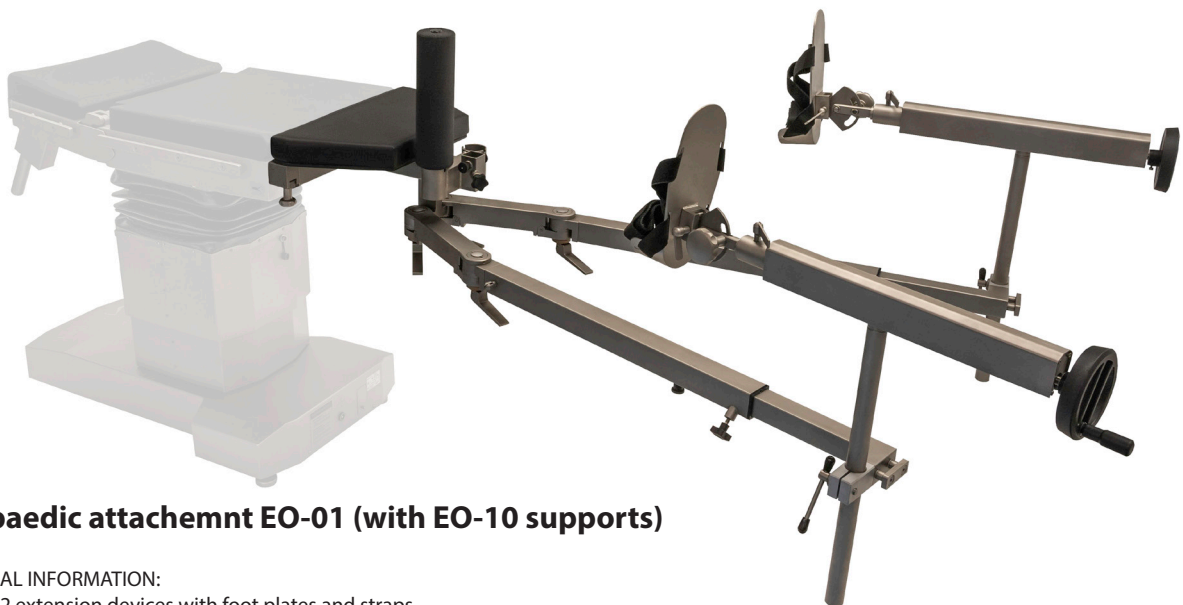
ORTHOPAEDIC SURGERY - SUPINE POSITION (ORTHOPAEDIC ATTACHEMENT EO-01)



**ORTHOPAEDIC SURGERY - SUPINE POSITION
(ORTHOPAEDIC ATTACHEMENT EO-01 WITH SUPPORTS EO-10 AND BAR SUPPORT EO-02)**



ORTHOPAEDIC SURGERY - LATERAL DECUBITUS POSITION (ORTHOPAEDIC ATTACHEMENT EO-01 WITH SUPPORTS EO-10 AND HIP SUPPORT EO-09)



Orthopaedic attachment EO-01 (with EO-10 supports)

TECHNICAL INFORMATION:

Includes 2 extension devices with foot plates and straps

Additional accessories (EO-02...EO-11) are to be ordered separately

Fixed to leg rests sockets

Adjustment of extensions devices height: 350mm

Distance between support roll and extensions devices: 300-1300mm

Adjustment of rotation arms position: 0-180

Adjustment of length of orthopaedic attachments arms: 600mm

Support roll X-Ray permeable

Made of stainless steel with matt finish, foam mattress covered with artificial leather, polyurethane

Orthopaedics Traumatology Accessories



EO-02 Bar support

TECHNICAL INFORMATION:

To be fixed to the arms of the orthopaedic attachment EO-01 with EO-07 clamp

Height adjustment 400mm

Made of stainless steel with matt finish and leather strap



EO-03 Leg support

TECHNICAL INFORMATION:

To be fixed to the arms of the orthopaedic attachment EO-01 with EO-07 clamp

Height adjustment 400mm

Made of stainless steel with matt finish and leather strap / polyurethane foam

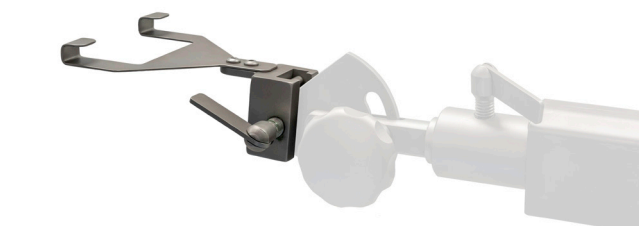


EO-04 Support for plastering

TECHNICAL INFORMATION:

To be fixed to the socket of the orthopaedic attachment EO-01

Made of stainless steel with matt finish and leather strap / polyurethane foam



EO-05 Heel holder

TECHNICAL INFORMATION:

To be fixed to orthopaedic attachment EO-01 instead of plate supports

Made of stainless steel with matt finish



EO-06 foot support

TECHNICAL INFORMATION:

To be fixed to the orthopaedic attachment EO-01 instead of plate supports

Made of stainless steel with matt finish and leather straps



EO-07 Clamp for orthopaedic attachment supports

TECHNICAL INFORMATION:

Used to fix the following accessories: EO-02, EO-03, EO-08, EO-11, to the orthopaedic attachment EO-01

Made of stainless steel with matt finish



EO-08 Knee operation attachment for orthopaedic attachment

TECHNICAL INFORMATION:

Without extension device

To be fixed to the arms of the orthopaedic attachment EO-01 with EO-07 clamp Height adjustment: 200mm

Adjustment of distance between support roll and extension device: 800mm

Angle adjustment against tabletop

Made of stainless steel with matt finish and polyurethane foam



EO-09 Hip support for lateral decubitus position

TECHNICAL INFORMATION:

To be fixed to the socket of the orthopaedic attachment EO-01

Adjustment left/right

Adjustment of support roll rotation

Made of stainless steel with matt finish and polyurethane foam

Orthopaedics Traumatology Accessories



EO-10 Support for orthopedic attachment arms

TECHNICAL INFORMATION:

To be fixed to the arms of the orthopedic attachment EO-01

Height adjustment: 400 mm

Made of stainless steel with matt finish



EO-11 Knee support for side positions

TECHNICAL INFORMATION:

To be fixed to the arms of the orthopedic attachment EO-01 with EO-07 clamp

Made of stainless steel with matt finish and polyurethane foam



EO-12 Trolley for installation of orthopedic attachment

TECHNICAL INFORMATION:

Used to transport and assembly the orthopedic attachment EO-01 to the operating table

Non-marking castors with individual brakes

Basket for accesories in the base

Made of stainless steel with matt finish



EO-13 Mobile stand for additional equipment of orthopedic attachment

TECHNICAL INFORMATION:

Non-marking castors with individual brakes

Hooks and rails for storage of orthopaedic accessories

Basket in the basi

Made of stainless steel with matt finish and HPL



EO-14 Leather shoes for orthopedic attachment

TECHNICAL INFORMATION:

To be fixed to the orthopaedic attachment EO-01 instead of plate supports

Made of stainless steel with matt finish and leather



EO-20 Attachment for hand operating

TECHNICAL INFORMATION:

To be fixed with 2 pcs of clamp EB-01

Height adjustment: 200mm

Adjustment of extension device length: 350mm

Adjustment of tilt and rotation of hand fixing

Made of stainless steel with matt finish and polyurethane foam



EO-30 Attachement for shoulder operations head rest EN-02

TECHNICAL INFORMATION:

To be fixed to legrests sockets

Includes EN-02 head rest

Removable right and left shoulder sections

Made of stainless steel with matt finish, polyurethane foam and HPL

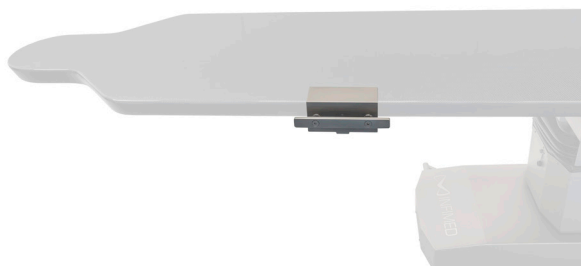
Angiography table



VIEW FROM THE SIDE, WITH MAX LONGITUDINAL SLIDE



VIEW FROM THE BACKSIDE, WITH MAX LATERAL SLIDE



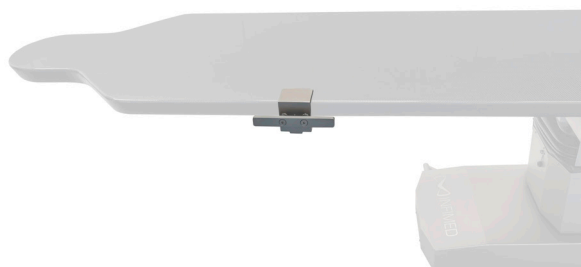
ER-01.0

TECHNICAL INFORMATION:

To be fixed on carbo fibre tabletop

Allows to fix heavier additional accesories on the side rails

Made of stainless steel with matt finish.



ER-01.1

TECHNICAL INFORMATION:

To be fixed on carbo fibre tabletop

Allows to fix lighter additional accesories on the side rails

Made of stainless steel with matt finish.



ER-02.0

TECHNICAL INFORMATION:

To be fixed on carbo fibre tabletop

Allows to fix heavier additional accesories on the side rails

X-ray permeable

Made of carbon fibre and stainless steel with matt finish.



ER-02.1

TECHNICAL INFORMATION:

To be fixed on carbo fibre tabletop

llows to fix lighter additional accesories on the side rails

X-ray permeable

Made of carbon fibre and stainless steel with matt finish.

Positioning pads

EM-01 Mattress for spine surgeries

TECHNICAL INFORMATION:

For positioning the patient, especially during surgical procedures on the spine

Made of polyurethane foam with artificial letter



EM-02 Mattress for sitting position

TECHNICAL INFORMATION:

For positioning the patient, especially during procedures requiring sitting position

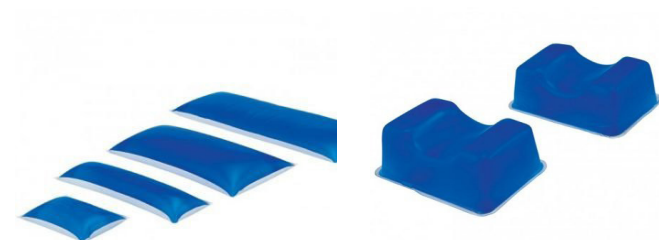
Made of polyurethane foam with artificial letter



Gel patient body positioners

TECHNICAL INFORMATION:

Thick layered gel patient body positioners for patient on operation table: arm, chest, heel, head positioners and table pads





**European
Funds**
Smart Growth



Polska

European Union
European Regional
Development Fund



For special requirement of the customer it is possible to produce the product with changed technical parameters which do not diminish its safety.

The details given in this catalogue are correct at the time of going to press. Infimed Sp. z o.o., however, reserves the right to improve shown equipment.

adres INFIMED Sp. z o.o.
ul. Kabaty 1,
34-300 Żywiec,
Polska
tel/fax +48 33 861 40 96
email office@infimed.pl
www www.infimed.pl

NIP 553-251-29-67
REGON 243274947
KRS 0000463933

Sąd Rejonowy w Bielsku-Białej, VIII Wydział
Gospodarczy Krajowego Rejestru Sądowego.
Wysokość Kapitału Zakładowego: 500 000 PLN

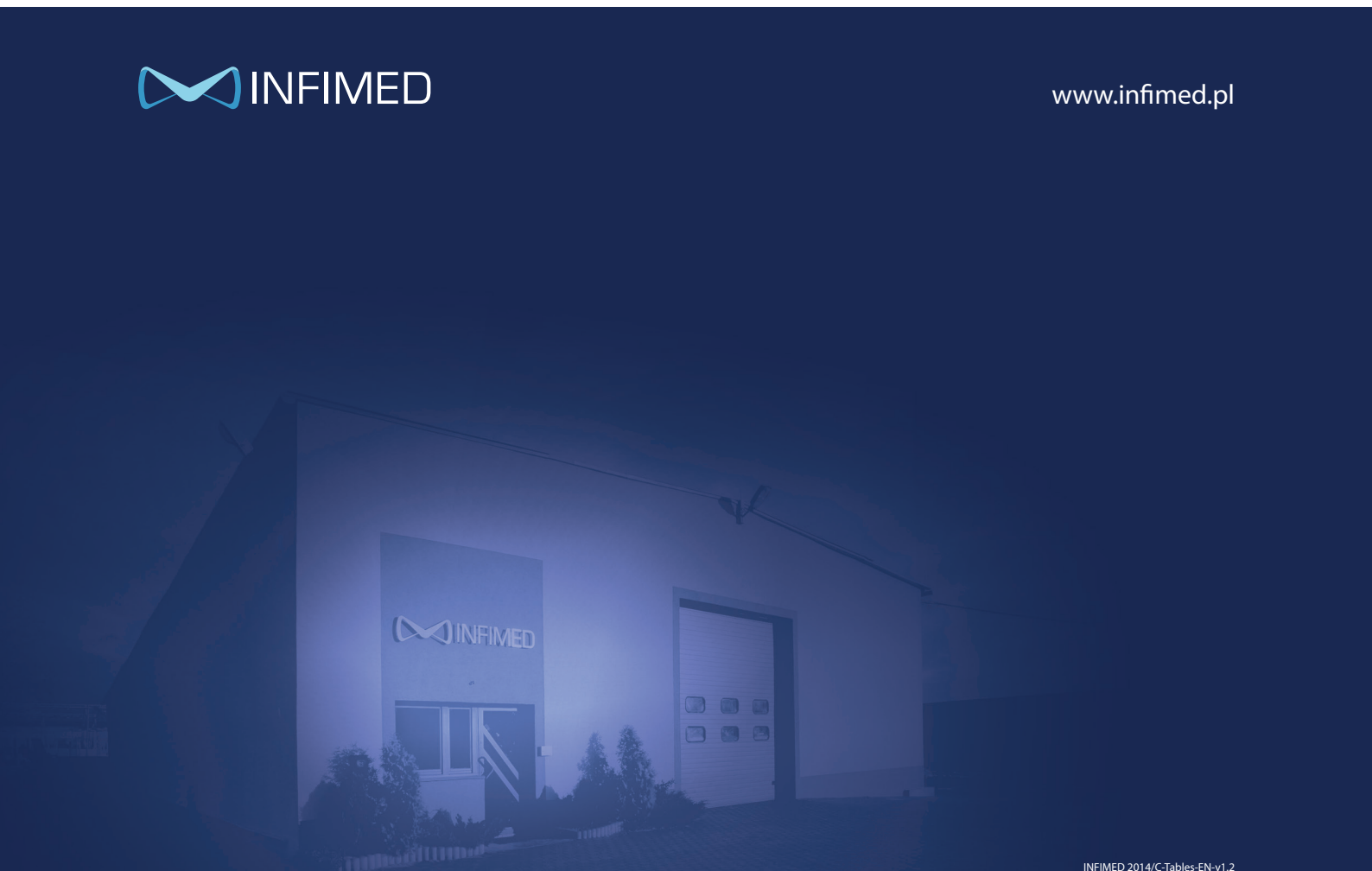
bank Bank Spółdzielczy
w Węgierskiej Górze
SWIFT POLUPLPR

78 8131 0005 0016 2492 2000 0010 PLN
PL02 8131 0005 0016 2492 2000 0020 EUR
PL23 8131 0005 0016 2492 2000 0030 USD


TÜV Rheinland
POLSKA
EN ISO 13485:2012
EN ISO 9001:2008



www.infimed.pl



INFIMED 2014/C-Tables-EN-v1.2



BOS MEDICAL INTERNATIONAL
The European decubitus specialist

OPERATING ROOM

Gel Positioning Pads



Prevention is better than cure



Hanna Budzicz

info@bosinternational.eu

+48 504 24 04 64 | +31 (0) 13 518 62 44



Anna Zdunek

a.zdunek@bosmedicalinternational.pl

+48 725 509 444

Bos Medical International BV
Groenstraat 4, 4847 AE Teteringen | The Netherlands
VAT nr NL818902279B01

www.bosmedicalinternational.com

Content list

INTRODUCTION

About Us.....3
Ranges.....3
Pressure Redistribution.....4
Biocompatibility Test.....5

PRODUCT GUIDE

UG (Original Solution) 6
Head, Neck & Face.....7
Arm & Elbow.....9
Ankle, Heel & Foot.....10
Body.....11
Table Pad.....16

UFG (Light Weight Solution) 17
Head, Neck & Face.....18
Arm & Elbow.....19
Ankle, Heel & Foot.....19
Body.....20
Table Pad.....21

SYMBOL GUIDE ON EACH PRODUCT

S

Supine

P

Prone

L
I

Lithonomy

L
A

Lateral

POSITIONING GUIDE

Supine.....22
Prone.....23
Lateral.....24
Lithonomy.....25
Summary.....26



About Us

Freek Bos, the founder of Bos Medical International BV, travelled the world looking for the best products to prevent and cure pressure ulcers. He did this based on the best quality and longevity of the products. This was and still is the focus of our organization.

Our goal is to provide comfort to people through our products. We offer you wide range of anti-decubitus cushions, mattress, operating room gel pad positioners, as well as leisure and homecare pressure solutions.

We only work with manufacturers who can comply with European law and regulations.

For further details please visit our website:
www.bosmedicalinternational.com

About Our Product

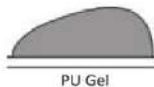
All of the products undergo high quality control during the production process to ensure user safety and comfort as we are qualified for GMP, ISO 13485, CE (MDR 2017/745) and FDA.



Gel positioner ranges

Bos Medical International developed the Operating Room Positioning Gel pads as we aim to provide advanced pressure care to healthcare systems.

Our OR Positioning Gel Pads come in two types:
UG Gel PADS and UFG Gel PADS.



PU Gel

UG- The Original Solution

The UG Series has an extensive range of reusable 100% polyurethane gel pads.

- 100% PU Gel relieve the pressure during surgery.
- Reusable by Waterproof Polyurethane film to protect moisture and foreign material.
- Latex Free

Available Color
(Blue, Yellow)



PU Gel & PU Foam

UFG- Light Weight Solution

Foam base at the bottom reduced the weight by 30-50% and gel on top in contact skin offers effective pressure relief.

- Foam at the bottom reduces the weight by 30-50% of original UG products.
- Reusable by Waterproof Polyurethane film to protect moisture and foreign material.
- Stable foam base maintain the shape of the pad and easy to move by light weight

Available Color
(Gray)



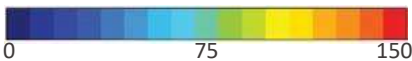
Pressure Redistribution

Pressure ulcers or bedsores usually occurs when patient undergoes long surgery in various positioning [1].

Most areas at risk are head, shoulders, hips, knees, and heels. Gel pad is recommended to decrease pressure ulcers and prevent skin damage to all areas of the body [2].

Preventing Pressure Injuries

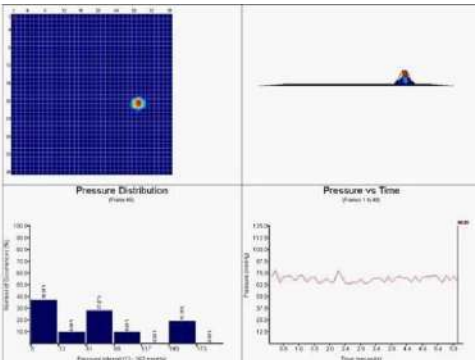
Hospitals need to assess the support surfaces used for patients for pressure ulcer prevention [3].



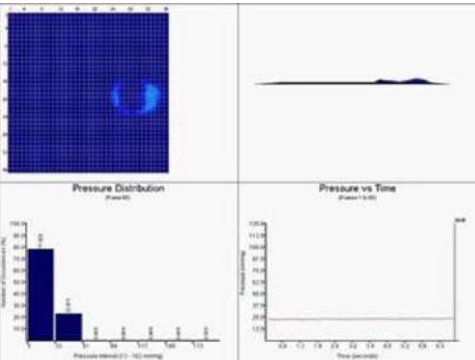
1. Closed Head Ring- Item no. AP003



Without Head Ring



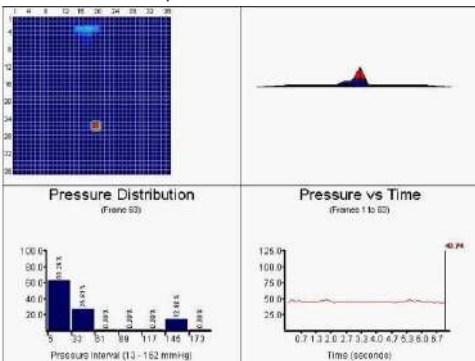
With AP003



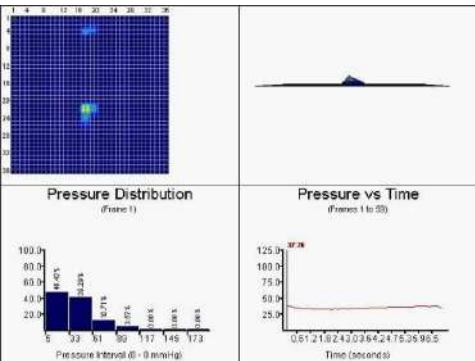
2. Heel Cups- Item no. AP034



Without Heel Cups



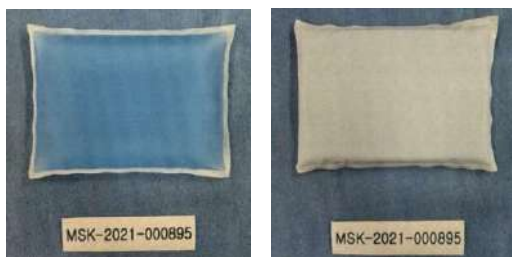
With AP034



Tester : 175cm, 75kg (Male)
Test Equipment : BodiTrak HR Seat/Back SFS0014

[1] Gefen A, Creehan S, Black J. Critical biomechanical and clinical insights concerning tissue protection when positioning patients in the operating room: A scoping review. *Int Wound J.* 2020;17:1405–1423
[2] Van Wicklin SA. Guideline for positioning the patient. In: 2017 Guidelines for Perioperative Practice. Denver (CO): Association of Perioperative Registered Nurses (AORN); 2017 May, Denver CO, USA, pp. e1–e72
[3] Engels D, Austin M, McNichol L, Fencil J, Gupta S, Kazi H. Pressure ulcers: factors contributing to their development in the OR. *AORN J.* 2016;103(3):271–281

Biocompatibility Test



Operating Room Gel Positioning Pad- Item no. AP417

1. Cytotoxicity Test (ISO10993-5)

Cytotoxicity test was conducted on the basis of ISO 10993-5 to evaluate the potential cytotoxicity. The MEM extract of Operating Room Gel Positioning Pad (Item : AP417) showed no evidence of causing pH change. There is mild growth inhibition of about 30 % was observed. Therefore, the test extract was considered to be mild cytotoxic and evaluated as grade 2 (Mild) on the criteria in ISO 10993-5. The reagent control, negative control showed no cytotoxicity and the positive control showed cytotoxicity in more than 75 % cells as anticipated. This means this test is valid. Thus, Operating Room Gel Positioning Pad met the requirements of general test for medical device since the cytotoxicity grade was not greater than 2 (Mild).



Operating Room Gel Positioning Pad- Item no. AP425

2. Skin Irritation Test (ISO10993-10)

Skin Irritation test was done to investigate the skin irritation of Operating Room Gel Positioning Pad (Item : AP425).

During the test period, there were no specific clinical signs and dead animals. All animals showed normal increase in body weight. In an observation of applied site after end of application, there were not observed erythema, eschar, oedema and etc., any skin response. It was evaluated that application of Item : AP425 was not induced erythema, eschar, oedema and etc., or any skin response. Thus, Operating Room Gel Positioning Pad (Item : AP425) was considered to be a product that does not cause skin irritation.

3. Skin Sensitization Test (ISO 10993-10)

This test was conducted to investigate the skin sensitizing potency of Operating Room Gel Positioning Pad (Item : AP425). The result showed that there were not induced any skin reaction. Therefore, Operating Room Gel Positioning Pad (Item: AP425) did not have skin sensitizing potency.

Table. Evaluation Of Skin Response

| Group | Animal Number | Score per observation times | | Mean score | Sensitization Rate (%) |
|--------------|---------------|-----------------------------|-------|------------|------------------------|
| | | 24 hr | 48 hr | | |
| G1 Negative | 1101 | 0 | 0 | 0.0 | 0.0 |
| | 1102 | 0 | 0 | | |
| | 1103 | 0 | 0 | | |
| | 1104 | 0 | 0 | | |
| | 1105 | 0 | 0 | | |
| G2 Treatment | 1201 | 0 | 0 | 0.0 | 0.0 |
| | 1202 | 0 | 0 | | |
| | 1203 | 0 | 0 | | |
| | 1204 | 0 | 0 | | |
| | 1205 | 0 | 0 | | |
| | 1206 | 0 | 0 | | |
| | 1207 | 0 | 0 | | |
| | 1208 | 0 | 0 | | |
| | 1209 | 0 | 0 | | |
| | 1210 | 0 | 0 | | |



UG (Original Solution)

The UG series has a wide range of reusable gel positioners made of 100% polyurethane. The local pressure is distributed and lowered and the risk of pressure ulcers is reduced by the slight movement of the soft gel.

Available colours (blue, yellow):



S Supine

P Prone

**L
I** Lithotomy

**L
A** Lateral

Head, Neck & Face

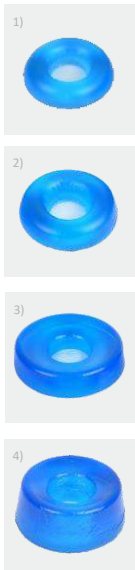


Closed Head Ring.



Protects the head, face, neck, and ears during various type of surgery while provides comfort to the patient’s head.

- 1) AP001 / 9x4x2 cm / 3.5x1.6x0.8 inch
- 2) AP002 / 14x6x3.5 cm / 5.5x2.4x1.4 inch
- 3) AP003 / 20x7.5x4.5 cm / 7.9x3x1.8 inch
- 4) AP004 / 20x7.5x7.5 cm / 7.9x3x3 inch



Open Head Ring.



Designed to support patient’s head and face during surgery with easy access for surgical intubation.

- 1) AP011 / 9x4x2 cm / 3.5x1.6x0.8 inch
- 2) AP012 / 14x6x3.5 cm / 5.5x2.4x1.4 inch
- 3) AP013 / 20x7.5x4.5 cm / 7.9x3x1.8 inch
- 4) AP014 / 20x7.5x7.5 cm / 7.9x3x3 inch



Open Head Ring With Cut.



The soft gel material adjust to patient’s head and offers sufficient support and comfort during operation. The padless open head ring provides flexibility to accomodate various patients.

- 1) AP011/C / 9x4x2 cm / 3.5x1.6x0.8 inch
- 2) AP012/C / 14x6x3.5 cm / 5.5x2.4x1.4 inch
- 3) AP013/C / 20x7.5x4.5 cm / 7.9x3x1.8 inch
- 4) AP014/C / 20x7.5x7.5 cm / 7.9x3x3 inch



Face Pad.



This versatile pad can be used in various procedures where endothelial tubes are employed. This pad offers maximum protection to the patient forehead from pressure during long hours of operation.

- 1) AP021 / 16x6x1.6 cm / 6.3x2.4x0.6 inch



Prone Head Rest With Mirror.



This product provides comfort and protection to the head in prone position. The mirror on the bottom part provides better sight to the patient face during surgery positioning and the height can be adjusted according to the needs. This unique design allows this product to also maintain respiratory passageway in place.

*Height is adjustable as user’s head size
(Pad)

- 1)AP025 / 25x23x7 cm / 9.8x9x2.7 inch

(Frame)

- 2)AP026 / 26x22.5x8.5~11 cm / 10.2x8.8x3.3~4.3 inch



Head, Neck & Face



Prone Head Rest.

P

Designed to support patient head during surgery. The unique design provides excellent comfort, stability, and protection when patient's head is in the prone position.

- 1) AP022 / 28x23x14.5 cm / 11x9x5.7 inch
- 2) AP023 / 23x19x13 cm / 9x7.5x5.1 inch
- 3) AP024 / 24x22x9 cm / 9.4x8.6x3.5 inch



Supine Head Rest.

S

L
I

Designed for patient in supine position to relieve pressure on ears, neck, and back of the head.

- 1) AP112 / 27x24x9 cm / 10.6x9.4x3.5 inch



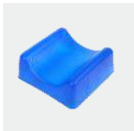
Contoured Head Rest.

S

L
I

This pad is designed for procedures in the supine position requiring optimum stability of the patient head. The soft gel material provides even weight distribution to protect the patient from developing pressure sores.

- 1) AP081 / 19x19x6 cm / 7.5x7.5x2.4 inch



Head Pad.

S

L
I

Head pad protects the head, face, neck and ears also provides comforts and stable positioning during all kinds of surgery.

- 1) AP110 / 27x23x7 cm / 10.6x9.1x2.8 inch



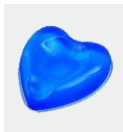
Head Pad with Heart Shape.

S

L
I

Having unique design, this product provides protection to the patient's head and neck during surgery. The soft gel materials gives comfort as it helps to even weight distribution.

- 1) AP113 / 30x31.5x7 cm / 11.8x12.4x2.7 inch



Arm & Elbow



Armboard Pad.



Arm board pad provides excellent pressure relief during various surgical procedures.

- 1) **AP071** / 40x12.5x2 cm / 16x4.9x0.8 inch
- 2) **AP072** / 60x12.5x2 cm / 24x4.9x0.8 inch



Armboard Pad With Foam.



Designed to provide stability to the arm during various procedures. This product can be used for the arm and also the leg.

- 1) **AP073** / 40x12.5x6 cm / 16x5x2.4 inch
- 2) **AP074** / 60x12.5x6 cm / 24x5x2.4 inch
- 3) **AP075** / 50x12.5x6 cm / 20x5x2.4 inch
- 4) **AP076** / 63x12.5x6 cm / 24.8x5x2.4 inch



Contoured Armboard Pad.



This pad is suitable for standard table extension. The shape provides comfort and stability during surgical procedures. This product can be used for the arm and also the leg.

- 1) **AP077** / 52x15x5.5 cm / 20.5x6x2.1 inch



Arm Protector.



Designed with adjustable velcro, this arm protector provides comfort and stable pressure relief.

- 1) **AP310** / 38x12x0.8 cm / 15x4.7x0.3 inch
- 2) **AP311** / 46x21x0.8 cm / 18.1x8.3x0.3 inch

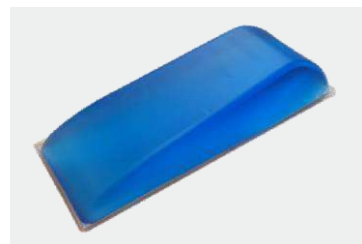
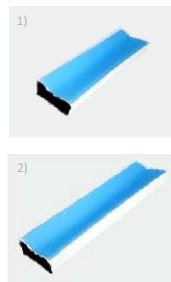


Gel Fastening Strap.



The soft and comfortable polyurethane gel of these straps provide effective protection to wrist and ankles.

- 1) **FB-01** / 33x7x1.5 cm / 13x2.8x0.6 inch
- 2) **FB-02** / 36x7x1.5 cm / 14.2x2.8x0.6 inch

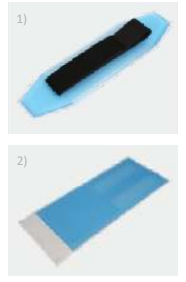


Hand/ Wrist Supporter.



It provides hand and wrist stabilization and protection.

- 1) **AP005** / 28x8.3x6 cm / 11x3.3x2.7 inch



Ankle, Heel & Foot



Heel Support Pad.



These lightweight heel pads provide maximum comfort and support for heels during various surgical procedures.

- 1) AP031 / 20x11x7 cm / 8x4.3x2.75 inch
- 2) AP032 / 17x10.5x5 cm / 6.7x4.1x2 inch

*2pcs/1set

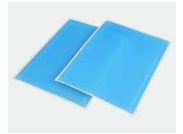


Crutch Stirrup Pad.



Crutch stirrup pads are designed to fit both Lloyd devices and various types of stirrups.

- 1) AP801 / 31x23x1 cm / 12x9x0.4 inch
- 2) AP802 / 40x25x1 cm / 16x9.8x0.4 inch
- 3) AP803 / 52x30x1 cm / 20.4x11.8x0.4 inch
- 4) AP804 / 55x52x1 cm / 21.6x20.4x0.4 inch



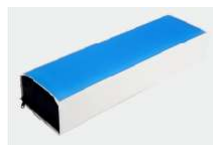
Comfort Heel Cups With Strap.



With unique design, these pads provide support and pressure relief for the heels while conform comfort for the patient.

- 1) AP033 / 17x18x1.3 cm / 6.7x7x0.5 inch
- 2) AP034 / 17x23x1.3 cm / 6.7x9x0.5 inch

*2pcs/1set

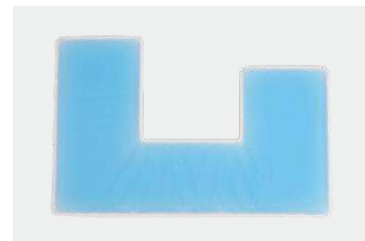


Boot Stirrup Pad.



Boot stirrup pads provide excellent protection over calf and heel area during surgery in the lithotomy position.

- 1) AP901 / 70.5x35/8x1 cm / 27.7x13.7/3.1x0.4 inch



Traction Boot Pad Cover.



This pad is suitable to protect patient's heel during surgical procedures.

- 1) AP902 / 37x24x0.5 cm / 14.5x9.5x0.2 inch

Operating Table Pad With Foam.



With light weight polyurethane foam base, this pad is suitable for use in various positions.

- 1) AP419 / 70x20x8 cm / 27.6x7.9x3.1 inch
- 2) AP420 / 30x15x10 cm / 11.8x5.9x3.9 inch
- 3) AP421 / 50x15x10 cm / 19.7x5.9x3.9 inch
- 4) AP422 / 60x15x10 cm / 23.6x5.9x3.9 inch

Ankle, Heel & Foot



Lithotomy Pole Covers.



Placed during lithotomy poles, these pads help to protect patient from skin damage.

1) **AP903** / 71x12x0.8 cm / 28x4.7x0.3 inch



Ankle Strap Stirrups.

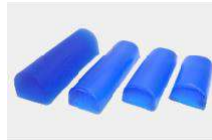


This strap provides protection for patient's skin during procedures in lithotomic positions.

1) **AP904** / 31x4x1 cm / 12.2x1.6x0.4 inch
2) **AP905** / 44x4.5x1 cm / 17.5x1.8x0.4 inch



Body

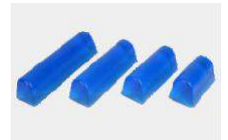


Chest Rolls (Adult).



This pad provides pressure relief and pressure sore prevention for adult patients.

1) **AP041** / 30x15x10 cm / 11.8x5.9x3.9 inch
2) **AP042** / 40x15x10 cm / 15.7x5.9x3.9 inch
3) **AP043** / 50x15x10 cm / 19.7x5.9x3.9 inch
4) **AP044** / 30x10x8.5 cm / 11.8x3.9x3.3 inch
5) **AP045** / 40x10x8.5 cm / 15.7x3.9x3.3 inch
6) **AP046** / 50x10x8.5 cm / 19.7x3.9x3.3 inch
7) **AP047** / 50x18x15 cm / 19.7x7.1x5.9 inch



Chest Rolls (Pediatric).



This pad has same function with chest roll for adults. It provides pressure relief and pressure sore prevention.

1) **AP048-1** / 15x7.5x7.5 cm / 5.9x3x3 inch
2) **AP048-2** / 20x7.5x7.5 cm / 7.9x3x3 inch
3) **AP048-3** / 25x7.5x7.5 cm / 9.8x3x3 inch
4) **AP048-4** / 30x7.5x7.5 cm / 11.8x3x3 inch



Chest Rolls With Flat Bottom.



This pad has flat bottom that provides stability and pressure relief.

1) **AP047-1** / 15x5x5 cm / 5.9x2x2 inch
2) **AP047-2** / 20x5x5 cm / 7.9x2x2 inch
3) **AP047-3** / 25x5x5 cm / 9.8x2x2 inch
4) **AP047-4** / 30x5x5 cm / 11.8x2x2 inch



Contoured Chest Rolls.



Designed with contour, this chest roll pad provides great utility as well as stability to the patient.

1) **AP049-1** / 30x16x13/9 cm / 11.8x6.3x5.1/3.5 inch
2) **AP049-2** / 40x16x13/9 cm / 7.9x6.3x5.1/3.5 inch
3) **AP049-3** / 50x16x13/9 cm / 9.8x6.3x5.1/3.5 inch

Body



Chest Positioning Set.



These pads uniformly conform to a patient's shoulder-to-chest area with the contoured design. It is suitable for upper body positioning.

- 1) AP050-1 / 71/58x20x7.6 cm / 28x7.9x3 inch
- 2) AP050-2 / 71/58x20x7.6 cm / 28x7.9x3 inch

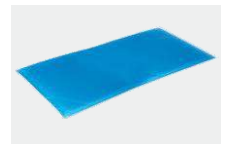


Bassinet Pad.



This product is suitable for neo-natal and pediatric patients. It is anti-shear and made from safe, latex free materials. It provides support and gentle pressure relief.

- 1) AP053 / 30.5x66x1.27 cm / 12.2x26.4x0.5 inch



Dome Positioner.



Made with gel that safe to use on skin, this dome positioner can prevent footdrop during surgery when patient is put in prone position. It also suits for under knee protection in supine position while providing pressure relief.

- 1) AP051 / 35x15x7.5 cm / 13.8x6x3 inch

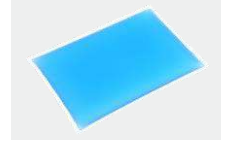


Fracture Table Pad.



Designed for use with fracture table post pad, this product can reduce pressure and shear at the sacral area effectively.

- 1) AP054 / 14x20x1.3 cm / 5.5x8x0.5 inch

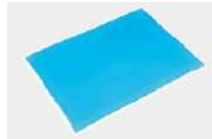


Graduated Thoracic Positioner.



This pad provides pressure and nerve protection for any full chest hyper extension surgical procedures.

- 1) AP052 / 23x36x3.8 cm / 9x14.2x1.5 inch

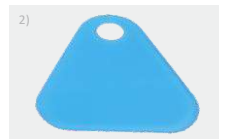


Fracture Table Hip Pad.



The main function of this product is to reduce pressure and shear at the sacral area. It is designed to be used on the fracture table plate.

- 1) AP055 / 18x18x1.3 cm / 7x7x0.5 inch
- 2) AP056 / 33x30x0.8 cm / 13x11x0.3 inch



Body



Universal Patient Positioner.



This positioner is suitable for various surgical procedures as it protects patients against PU.

- 1) AP091 / 16x8x4.5 cm / 6.3x3.1x1.7 inch
- 2) AP092 / 33x7x5 cm / 13x2.7x2 inch
- 3) AP093 / 33x12x6 cm / 13x5x2.4 inch
- 4) AP094 / 36x12.5x7 cm / 14.2x4.9x2 inch
- 5) AP095 / 25x12.5x5 cm / 9.8x4.9x2 inch
- 6) AP096 / 38x12.5x6.3 cm / 15x4.9x2.5 inch
- 7) AP097 / 50x12.5x7 cm / 20x4.9x2.75 inch

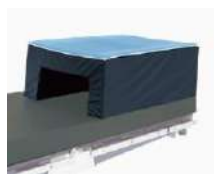
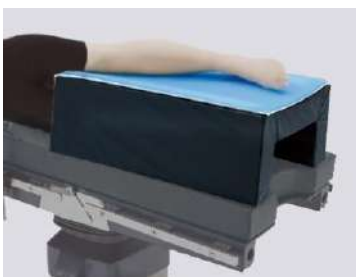


Lateral Positioner Set - Upper Body.



It is designed for the use on the shoulder and upper arm. It provides comfort and nerve protection to the patient during surgery.

- 1) AP101 / 71x50x10 cm / 31x20x3.9 inch



Lateral Positioner Set - Lower Body (Tunnel Cushion).



This set of tunnel frame and gel pad provide stability during surgery as well as prevent pressure sore for patient.

- 1) AP103 / 40x65x21 cm / 15.7x25.6x8.3 inch

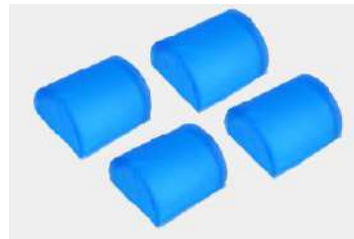


Angio Catheter Table.



It is designed to support patient during angiogram procedure.

- 1) AP105 / 50x100x25 cm / 20x40x10 inch

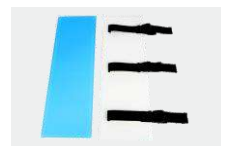
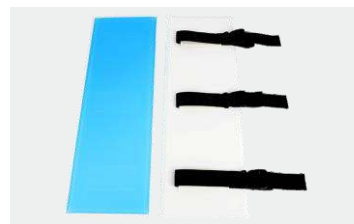


Relton Frame Pad Set.



These pads are designed for 4 contact areas of Relton-Hall Frame. This set can reduce nerve damage and provide pressure protection.

- 1) AP111 / 19x17.5x10.5 cm / 7.5x6.9x4.13 inch



Wilson Frame Pad.



This pad is designed for Wilson Frame which can protect from shear & pressure. It helps to maintain a patient's flexible spine position.

- 1) AP210 / 75x25.5x2.5 cm / 30x10.2x1 inch
- 2) AP211 / 75x25.5x1 cm / 30x10.2x0.4 inch

Body

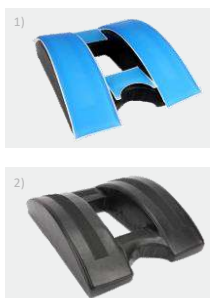


Wilson Frame Pad Set.



Designed for covering Wilson Frame, this pad set provides protection and pressure relief.

- 1) **AP212** / 72.5x17.5x2 cm / 28.5x6.9x0.8 inch
 2) **AP213** / 60x49x15.5 cm / 23.6x19.3x6.1 inch

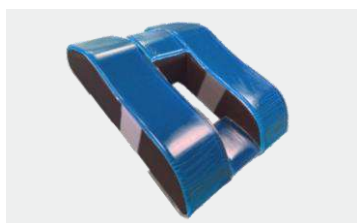


Patient Positioning Belt.



This pad ensures patient's protection, stability, and safety. The clip lock adjusts to fit various operating tables.

- 1) **AP601** / 50.5x8.5x0.8 cm / 20x3.3x0.3 inch



Wilson Frame Set.



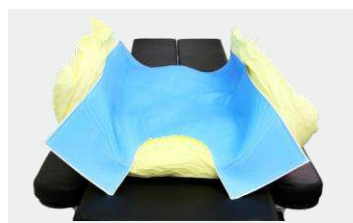
The Wilson Frame is designed to provide the same support that the metal frames do without the bulky weight and high cost. The Wilson Gel Pad fits on the Wilson Frame Pad perfectly, and is secured on the frame with velcro and straps. This product provides stability for patients during lumbar surgery.

(Pad)

- 1) **AP214** / 67x16x2 cm / 26.8x6.4x0.8 inch (2pcs)
 13x15.5x2 cm / 5.2x6.2x0.8 inch (2pcs)
 15.5x15x2 cm / 6.2x5.9x0.8 inch (2pcs)

(Frame)

- 2) **AP215** / 47x15x15 cm / 18.8x5.9x5.9 inch



VAC-PAC Cover.



This pad is designed to cover VAC-PAC. It provides stability during orthopedic, thoracic or urology procedures. While also gives medical care to selected areas of the body.

- 1) **AP701** / 97x64x1 cm / 38x25x0.4 inch



Slanting Shaped Pad.



It is designed to support and protect patient during lateral supine/supine surgeries. This pad reduces bed sores and pressure as well as avoiding nerve injury.

- 1) **AP102-3** / 30x22x5/1 cm / 12x8.8x2/0.4 inch
 2) **AP102-6** / 50x12x10/4 cm / 20x4.7x3.9/1.8 inch

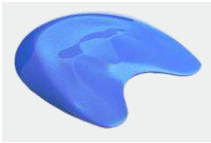
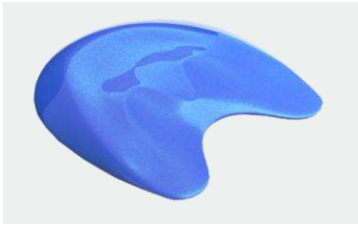
Fracture Table Post Pad.



Designed to be used with Fracture Table Hip Pad, this pad helps reduce pressure and shear at the sacral area.

- 1) **AP556** / 15x13x2.5 cm / 6x5x1 inch

Body



Sacral Protector.

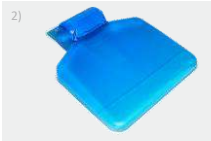
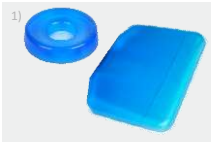
S

L

I

This product helps to prevent PU on the sacral area. It is designed for use in all supine procedures.

1) AP103-1 / 40x38x2.5 cm / 16x15.2x1 inch



Thyroid Pad.

S

This pad protects and supports neck during thyroid and neck surgery. It also helps to extend operation vision for surgeon.

1) AP104-1 / 30x45x12 cm / 12x18.3x4.8 inch
2) AP104-2 / 48x39x9 cm / 19.2x15.6x3.6 inch



Table Pad

Table pads provide protection over the entire surface area of the operating table and are recommended for use with patients in all positions. The pads are flexible, soft, comfortable, and versatile and distribute weight evenly over the entire surface area.

Operating Table Pad.

This pads are recommended to be used for all position. It distributes weight evenly and provide protection of pressure over the entire area of operating table.



AP301 / 20x50x1 cm / 8x20x0.4 inch
AP302 / 99x50x1 cm / 39x20x0.4 inch
AP303 / 50x50x1 cm / 20x20x0.4 inch

AP303-1.5 / 50x50x1.5 cm / 20x20x0.6 inch
AP304 / 50x25x1 cm / 20x10x0.4 inch **AP304-1.5** / 50x25x1.5 cm / 20x10x0.6 inch

AP305 / 10x38x1 cm / 4x15x0.6 inch
AP306 / 42x15x1 cm / 16.5x6x0.6 inch
AP307 / 10x61x1 cm / 4x24x0.4 inch

AP308 / 50x45x1 cm / 20x18x0.4 inch
AP308-1.5 / 50x45x1.5 cm / 20x18x0.6 inch
AP401 / 193x86x1 cm / 76x33.8x0.4 inch

AP402 / 183x50x1 cm / 72x20x0.4 inch
AP402-1.5 / 183x50x1.5 cm / 72x20x0.6 inch
AP403 / 117x50x1 cm / 46x20x0.4 inch

AP403-1.5 / 117x50x1.5 cm / 46x20x0.6 inch
AP404 / 160x40x1 cm / 63x16x0.4 inch
AP053 / 31x66x1.27 cm / 12x26x0.5 inch

AP405-1.5 / 15x35x1.5 cm / 6x14x0.6 inch
AP406-1.5 / 70x50x1.5 cm / 27.5x20x0.6 inch
AP407-1.5 / 70x45x1.5 cm / 27.5x18x0.6 inch

AP408-1.5 / 15x50x1.5 cm / 6x20x0.6 inch
AP409W/C / 117x50x1 cm / 46x20x0.4 inch
AP409W/C-1.5 / 117x50x1.5 cm / 46x20x0.6 inch

AP410W/C / 100x50x1 cm / 40x20x0.4 inch
AP410W/C-1.5 / 100x50x1.5 cm / 40x20x0.6 inch
AP411W/C / 50x50x1 cm / 20x20x0.4 inch

AP411W/C-1.5 / 50x50x1.5 cm / 20x20x0.6 inch
AP412 / 46x33x0.5 cm / 18x13x0.2 inch **AP412-1** / 46x33x1 cm / 18x13x0.4 inch

AP413 / 22x17x1 cm / 8.7x6.7x0.4 inch
AP414 / 60x60x2.5 cm / 24x24x1 inch
AP415 / 10x61x1 cm / 36x20x1 inch

AP416 / 75x25x2 cm / 30x10x0.8 inch
AP417 / 10x15x2 cm / 4x6x0.8 inch
AP418 / 16x8x0.6 cm / 10.7x3.2x0.2 inch

AP423 / 70x50x1.6 cm / 27.5x20x0.6 inch
AP424 / 100x50x1.5 cm / 40x20x0.6 inch
AP555 / 66x15x1.3 cm / 26x6x0.5 inch

Operating Table Pad Set(3pcs).

Consisting of 3 pieces pads for head, torso, and foot section, these table pads are perfect for the use of sectioned tables. This set provides protection during various surgical procedures.



(Head)
AP304 / 50x25x1 cm / 20x10x0.4 inch
AP304-1.5 / 50x25x1.5 cm / 20x10x0.6 inch

(Body)
AP410W/C / 100x50x1 cm / 40x20x0.4 inch
AP410W/C-1.5 / 100x50x1.5 cm / 40x20x0.6 inch

(Foot)
AP411W/C / 50x50x1 cm / 20x20x0.4 inch
AP411W/C-1.5 / 50x50x1.5 cm / 20x20x0.6 inch

Embossed Operating Table Pad.

This Pad features an embossed designed which provides pressure relief and comfort. It is suitable for all positions in surgical procedures.



AP061 / 50x50x1.6 cm / 20x20x0.63 inch
AP062 / 115x50x1.6 cm / 45x20x0.63 inch

AP063 / 40x23x1.6 cm / 16x9x0.63 inch
AP064 / 91x45x1.6 cm / 36x18x0.63 inch



UFG (Light Weight Solution)

Foam base at the bottom reduced the weight by 30-50% and gel on top in contact skin offers effective pressure relief.

Head, Neck & Face

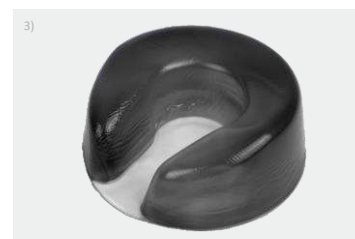


Closed Head Ring.



Protects the head, face, neck, and ears during various type of surgery while provides comfort to the patient's head.

- 1) AP002-UFG / 14x6x3.5 cm / 5.5x2.4x1.4 inch
- 2) AP003-UFG / 20x7.5x4.5 cm / 7.9x3x1.8 inch
- 3) AP004-UFG / 20x7.5x7.5 cm / 7.9x3x3 inch



Open Head Ring.



Designed to support patient's head and face during surgery with easy access for surgical intubation.

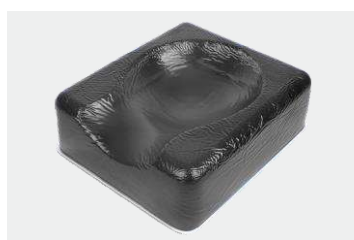
- 1) AP012-UFG / 14x6x3.5 cm / 5.5x2.4x1.4 inch
- 2) AP013-UFG / 20x7.5x4.5 cm / 7.9x3x1.8 inch
- 3) AP014-UFG / 20x7.5x7.5 cm / 7.9x3x3 inch

Open Head Ring With Cut.



The soft gel material adjust to patient's head and offers. Sufficient support and comfort during operation. The padless open head ring provides flexibility to accomodate various patients.

- 1) AP012/C-UFG / 14x6x3.5 cm / 5.5x2.4x1.4 inch
- 2) AP013/C-UFG / 20x7.5x4.5 cm / 7.9x3x1.8 inch



Prone Head Rest.



Designed to support patient head during surgery. The unique design provides excellent comfort, stability, and protection when patient's head is in the prone position.

- 1) AP022-UFG / 28x23x14.5 cm / 11x9.1x5.7 inch
- 2) AP023-UFG / 23x19x13 cm / 9.1x7.5x5.1 inch

Supine Head Rest.



Designed for patient in supine position to relieve pressure on ears, neck, and back of the head.

- 1) AP112-UFG / 27x24x9 cm / 10.6x9.4x3.5 inch

Head Pad.



Head pad protects the head, face, neck and ears also provides comforts and stable positioning during all kinds of surgery.

- 1) AP110-UFG / 27x23x7 cm / 10.6x9.1x2.8 inch

Head, Neck & Face



Contoured Head Rest.



This pad is designed for procedures in the supine position requiring optimum stability of the patient head. The soft gel material provides even weight distribution to protect the patient from developing pressure sores.

1) AP081-UFG / 19x19x6 cm / 7.5x7.5x2.4 inch

Arm & Elbow



Contoured Armboard Pad.



This pad is suitable for standard table extension. The shape provides comfort and stability during surgical procedures.

1) AP077-UFG / 52x15x5.5 cm / 20.5x6x2.1 inch

Ankle, Heel & Foot



Heel Support Pad.



These lightweight heel pads provide maximum comfort and support for heels during various surgical procedures.

1) AP031-UFG / 20x11x7 cm / 8x4.3x2.75 inch

2) AP032-UFG / 17x10.5x5 cm / 6.7x4.1x2 inch

*2pcs/1set



Body



Chest Rolls (Adult).



This pad provides pressure relief and pressure sore prevention for adult patients.

- 1) AP041-UFG / 30x15x10 cm / 11.8x5.9x3.9 inch
- 2) AP042-UFG / 40x15x10 cm / 15.7x5.9x3.9 inch
- 3) AP043-UFG / 50x15x10 cm / 19.7x5.9x3.9 inch
- 4) AP044-UFG / 30x10x8.5 cm / 11.8x3.9x3.3 inch
- 5) AP045-UFG / 40x10x8.5 cm / 15.7x3.9x3.3 inch
- 6) AP046-UFG / 50x10x8.5 cm / 19.7x3.9x3.3 inch



Chest Rolls With Flat Bottom.



This pad has flat bottom that provides stability and pressure relief.

- 1) AP047-1-UFG / 15x5x5 cm / 5.9x2x2 inch
- 2) AP047-2-UFG / 20x5x5 cm / 7.9x2x2 inch
- 3) AP047-3-UFG / 25x5x5 cm / 9.8x2x2 inch
- 4) AP047-4-UFG / 30x5x5 cm / 11.8x2x2 inch



Chest Rolls (Pediatric).



This pad has same function with chest roll for adults. It provides pressure relief and pressure sore prevention.

- 1) AP048-1-UFG / 15x7.5x7.5 cm / 5.9x3x3 inch
- 2) AP048-2-UFG / 20x7.5x7.5 cm / 7.9x3x3 inch
- 3) AP048-3-UFG / 25x7.5x7.5 cm / 9.8x3x3 inch
- 4) AP048-4-UFG / 30x7.5x7.5 cm / 11.8x3x3 inch



Contoured Chest Rolls.



Designed with contour, this chest roll pad provides great utility as well as stability to the patient.

- 1) AP049-1-UFG / 30x16x13/9 cm / 11.8x6.3x5.1/3.5 inch
- 2) AP049-2-UFG / 40x16x13/9 cm / 7.9x6.3x5.1/3.5 inch
- 3) AP049-3-UFG / 50x16x13/9 cm / 9.8x6.3x5.1/3.5 inch



Dome Positioner.



It is designed for patient in prone or lateral position. It also helps to protect and provide pressure relief.

- 1) AP051-UFG / 35x15x7.5 cm / 13.8x6x3 inch



Slanting Shaped Pad.



It is designed to support and protect patient during lateral supine/supine surgeries. This pad reduces bed sores and pressure as well as avoiding nerve injury.

- 1) AP102-3-UFG / 30x22x5/1 cm / 12x8.8x2/0.4 inch
- 2) AP102-6-UFG / 50x12x10/4 cm / 20x4.7x3.9/1.8 inch

Body & Table Pad



Thyroid Pad.



This pad protects and supports neck during thyroid and neck surgery. It also helps to extend operation vision for surgeon.

1) AP104-1-UFG / 30x45x12 cm / 12x18.3x4.8 inch

2) AP104-2-UFG / 48x39x9 cm / 19.2x15.6x3.6 inch

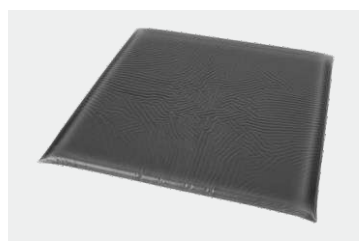


Table Pad.



The pad made with Soft Polyurethane gel and cushiony 3D air mesh fabric. Soft gel on top protects patient's skin and 3D air mesh fabric inside provide high pressure relief and comfort by the light weight. There is no wrinkle by folding for moving and storage by the 3D mesh fabric.

AP301-UFG / 20x50x2 cm / 8x20x0.8 inch

AP302-UFG / 99x50x2 cm / 39x20x0.8 inch

AP303-UFG / 50x50x2 cm / 20x20x0.8 inch

AP304-UFG / 50x25x2 cm / 20x10x0.8 inch

AP306-UFG / 42x15x2 cm / 16.5x6x0.8 inch

AP307-UFG / 10x61x2 cm / 4x24x0.8 inch

AP308-UFG / 50x45x2 cm / 20x18x0.8 inch

AP401-UFG / 193x86x2 cm / 77.2x34.4x0.8 inch

AP402-UFG / 183x50x2 cm / 73.2x20x0.8 inch

AP403-UFG / 117x50x2 cm / 46x20x0.8 inch

AP404-UFG / 160x40x2 cm / 64x16x0.8 inch

AP405-UFG / 15x35x2 cm / 6x14x0.8 inch

AP406-UFG / 70x50x2 cm / 28x20x0.8 inch

AP407-UFG / 70x45x2 cm / 28x18x0.8 inch

AP410-UFG / 100x50x2 cm / 40x20x0.8 inch

AP413-UFG / 22x17x1 cm / 8.7x6.7x0.4 inch

AP414-UFG / 60x60x2.5 cm / 24x24x1 inch

AP415-UFG / 10x61x1 cm / 36x20x1 inch

AP416-UFG / 75x25x2 cm / 30x10x0.8 inch

AP417-UFG / 10x15x2 cm / 4x6x0.8 inch

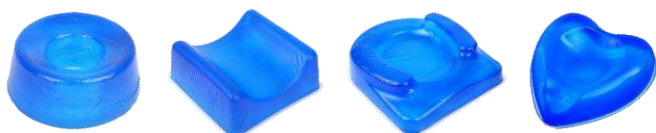
AP053-UFG / 31x66x2 cm / 12.4x26.4x0.8 inch

AP555-UFG / 66x15x2 cm / 26x6x0.8 inch

Supine Position S



Head, Face & Neck.



Closed Head Ring

AP001 AP002 AP003 AP004

Head Pad

AP110 AP113

Contoured Head Rest

AP081

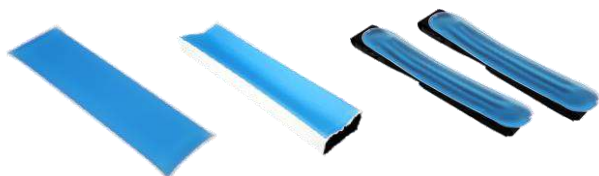
Supine Head Rest

AP112

Face Pad

AP021

Arm & Elbow.



Arm Board Pad

AP071 AP072

Arm Board Pad With Foam

AP073 AP074 AP075 AP076

Contoured Armboard Pad

AP077

Gel Fastening Strap

FB-01 FB-02

Body.



Fracture Table Pad

AP054

Contoured Chest Rolls

AP049-1 AP049-2 AP049-3

Sacral protector

AP103-1

Ankle, Heel & Foot.



Heel Support Pad

AP031 AP032

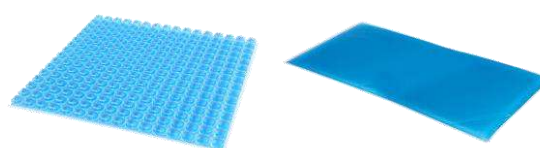
Comfort Heel Cups With Strap

AP033 AP034

Dome Positioner

AP051

Table Pad.



Embossed Table Pad

AP061 AP062 AP063 AP064

Table Pad

AP301 AP302 AP303 AP304
AP305 AP306 AP307 AP308
AP401 AP402 AP403 AP404

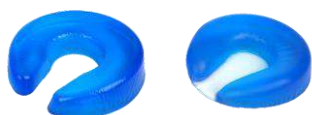
AP303-1.5 AP304-1.5 AP308-1.5
AP402-1.5 AP403-1.5 AP405-1.5
AP406-1.5 AP407-1.5 AP408-1.5

AP409W/C AP410W/C
AP411W/C AP409W/C -1.5
AP410W/C -1.5 AP411W/C -1.5

Prone Position P



Head, Face & Neck.



Open Head Ring

Open Head Ring With Cut

Prone Head Rest



AP011 AP012 AP013 AP014

AP011/C AP012/C AP013/C

AP022 AP023 AP024 AP025 AP026

Ankle, Heel & Foot.

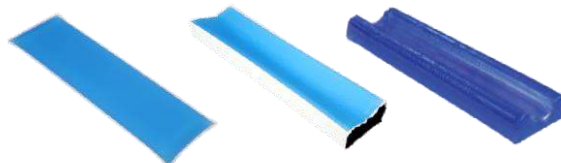


Heel Support Pad
Dome Positioner



AP031 AP032
AP051

Arm & Elbow.



Arm Board Pad

Arm Board Pad With Foam

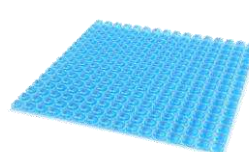
Contoured Armboard Pad

AP071 AP072

AP073 AP074 AP075 AP076

AP077

Table Pad.



Embossed Table Pad

Table Pad



AP061 AP062 AP063 AP064

AP301 AP302 AP303 AP304
AP305 AP306 AP307 AP308
AP401 AP402 AP403 AP404

AP303-1.5 AP304-1.5 AP308-1.5
AP402-1.5 AP403-1.5 AP405-1.5
AP406-1.5 AP407-1.5 AP408-1.5

AP409W/C AP410W/C
AP411W/C AP409W/C -1.5
AP410W/C -1.5 AP411W/C -1.5

Body.



Chest Rolls (Adult)

Contoured Chest Rolls

Chest Positioning Set

Relton Frame Pad Set

Wilson Frame Set

AP041 AP042 AP043 AP044 AP045 AP046 AP047

AP049-1 AP049-2 AP049-3

AP050-1 AP050-2

AP111

AP212 AP213 AP214 AP215

Lateral Position



Head, Face & Neck.



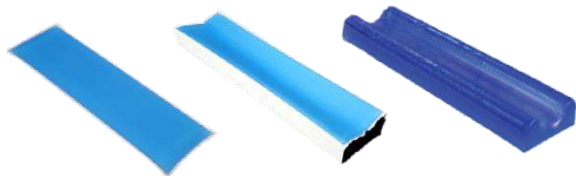
Open Head Ring

AP011 AP012 AP013 AP014

Open Head Ring With Cut

AP011/C AP012/C AP013/C

Arm & Elbow.



Arm Board Pad

AP071 AP072

Arm Board Pad With Foam

AP073 AP074 AP075 AP076

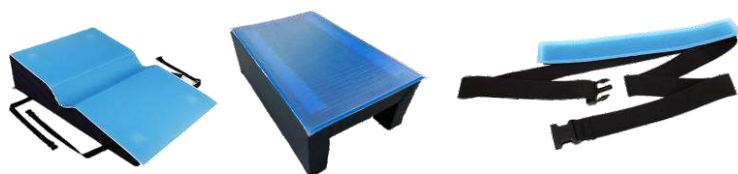
Contoured Armboard Pad

AP077

Arm Protector

AP310 AP311

Body.



Graduated Thoracic Positioner

AP052

Lateral Positioner

AP101

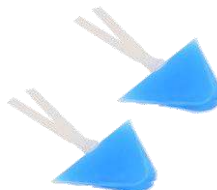
Patient Positioning Belt

AP601

Tunnel Pad

AP103

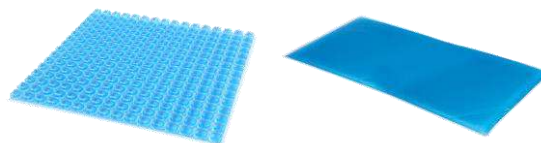
Ankle, Heel & Foot.



Comfort Heel Cups With Strap

AP033 AP034

Table Pad.



Embossed Table Pad

AP061 AP062 AP063 AP064

Table Pad

AP301 AP302 AP303 AP304
AP305 AP306 AP307 AP308
AP401 AP402 AP403 AP404

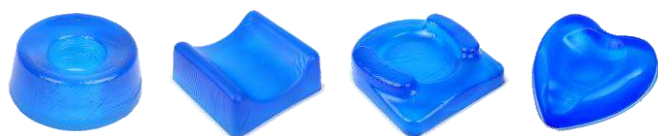
AP303-1.5 AP304-1.5 AP308-1.5
AP402-1.5 AP403-1.5 AP405-1.5
AP406-1.5 AP407-1.5 AP408-1.5

AP409W/C AP410W/C
AP411W/C AP409W/C-1.5
AP410W/C -1.5 AP411W/C -1.5

Lithotomy Position



Head, Face & Neck.



Closed Head Ring

AP001 AP002 AP003 AP004

Head Pad

AP110 AP113

Contoured Head Rest

AP081

Supine Head Rest

AP112

Face Pad

AP021

Ankle, Heel & Foot.



Heel Support Pad

AP031 AP032

Dome Positioner

AP051

Lithotomy Pole Covers

AP903

Ankle Strap Stirrups

AP904 AP905

Arm & Elbow.



Arm Board Pad

AP071 AP072

Arm Board Pad With Foam

AP073 AP074 AP075 AP076

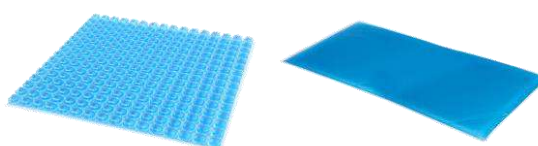
Contoured Armboard Pad

AP077

Gel Fastening Strap

FB-01 FB-02

Table Pad.



Embossed Table Pad

AP061 AP062 AP063 AP064

Table Pad

AP301 AP302 AP303 AP304
AP305 AP306 AP307 AP308
AP401 AP402 AP403 AP404

AP303-1.5 AP304-1.5 AP308-1.5
AP402-1.5 AP403-1.5 AP405-1.5
AP406-1.5 AP407-1.5 AP408-1.5

Body.



Sacral Protector

AP103-1

Patient Positioning Belt

AP610

Graduated Thoracic Positioner.

AP052

AP409W/C AP410W/C
AP411W/C AP409W/C -1.5
AP410W/C -1.5 AP411W/C -1.5

GEL PAD BENEFITS



Support weight



Provide superior
pressure relief



Easily cleaned



High strenght and
elastically



Reusable materials



Can be warmed
and cooled up



Won't leak or
flow out



Does not harden
over time



Prevent decubitus
ulcers and nerve injury



X-ray translucent



Cost effective



Does not support
skin irritation



Does not support
bacterial growth



UFG is lighter than
other gel-only
products



