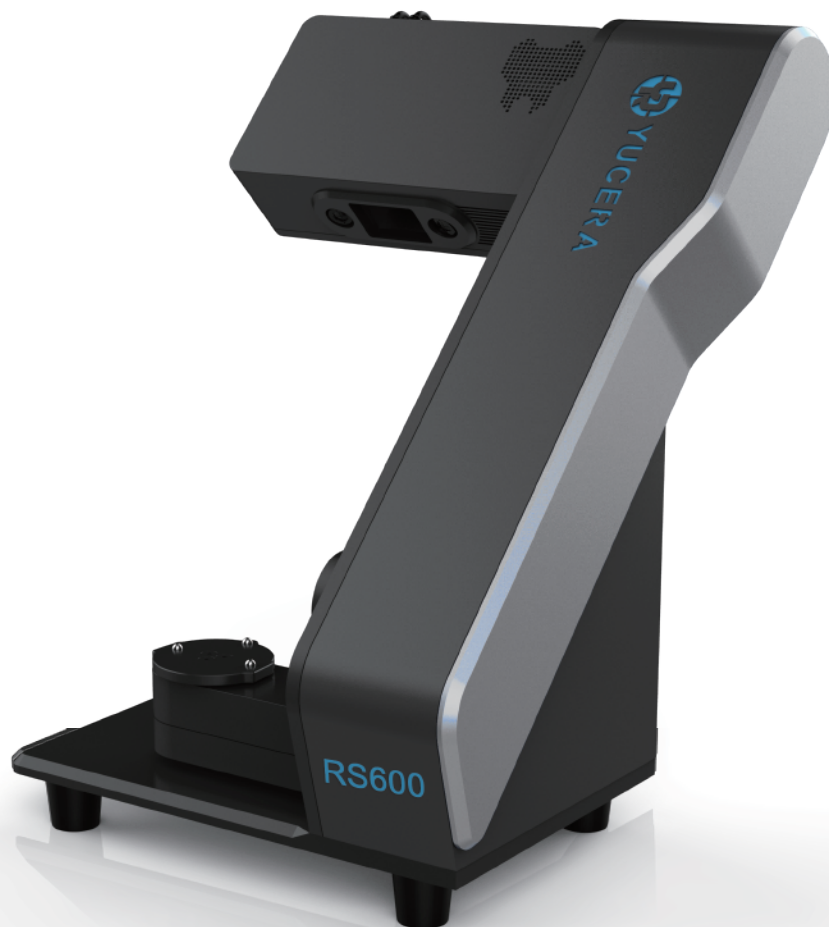




Dental model 3D scanner

YRC-RS600

Efficient, accurate and comprehensive
New generation and ultimate experience



Your dental service , a reliable partner!

Powerful scanning performance



High precision

Domestic and international double standards, the scanning accuracy of the full dental arch can be guaranteed to be <10um



High speed

Different scenes can distinguish fine scanning,Simply scan on demand to eliminate time waste.
Dramatically speed up your workflow

Application benefits

Undivided scan

Two more scanning steps, no need to re-scan, saving time and effort

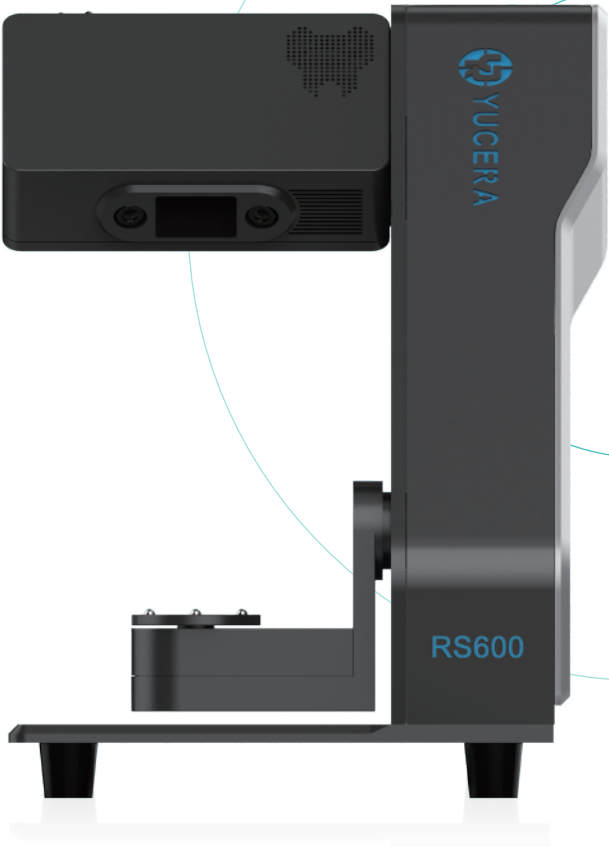
Splitted scan

Two less scanning steps, accurate scan segmentation, and highlighted features

Texture scan

Vibrant color, clear outline, true display

Suitable for many application areas and wide range of application options



Scanner model	RS600
Scan range	108*80*80mm
Camera resolution	2*3.0MP
Scanning principle	Contactless scanning
scanning method for double-sided impressiontexture	Once
Texture	True color
Structure	Structured Blu-ray
Automatic matching accuracy	99.9%
Placement method of die model	Place freely
Accuracy	< 8μm
Weight	9KG
Output format	STL、PLY、OBJ
Data interface	USB3.0
Related software	exocad

*Parameters are tested under specific conditions, the final interpretation right belongs to Yucera all