

www.doflab.com





RELIABLE
PROGRESSIVE
CUSTOMER ORIENTED

CREATE YOUR MASTERPIECE



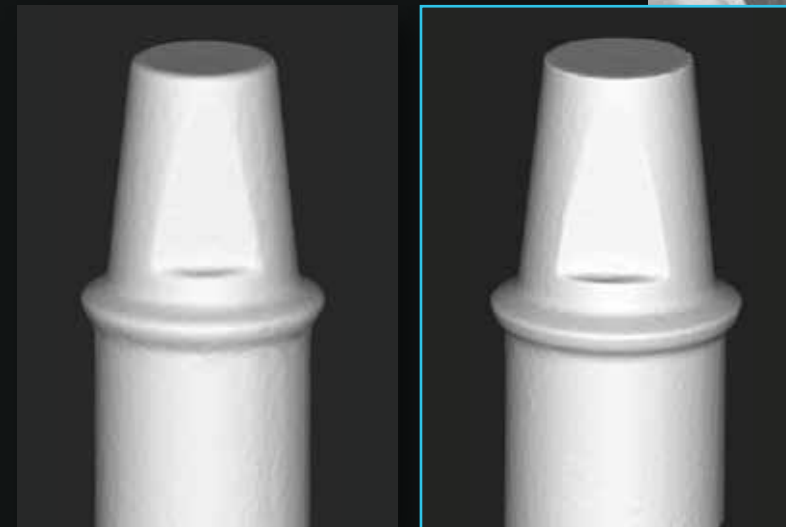
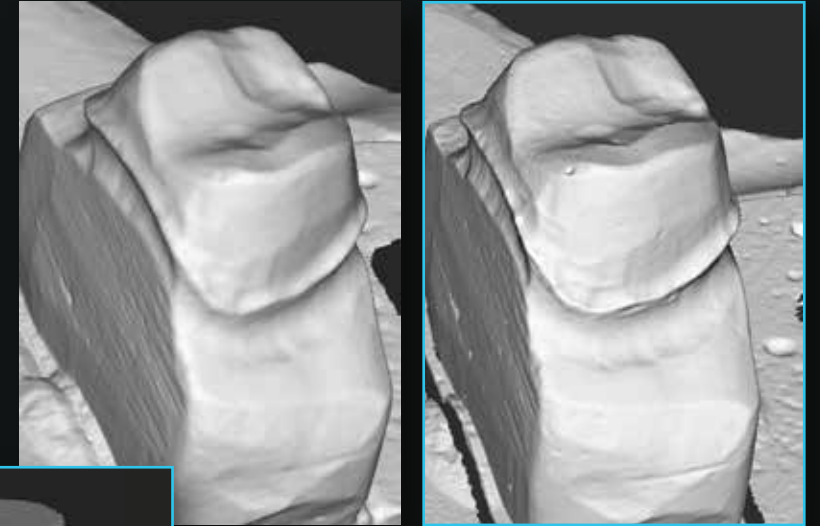
DOF Inc.

is a global CAD/CAM solutions company delivering innovative ideas through the development of open 3D scanners and 5-axis milling machines. Its products include the Freedom UHD, Freedom HD, Swing HD, Swing, Edge, and Prime 3D dental scanners along with the Sharp2 Plus dental milling machine. Branch offices are currently in the United States, China, and Germany where all sales and services are available in each region. DOF Inc. prides itself as a company who is reliable by producing progressive improvements on products and services with the customer in mind.

REVOLUTIONARY
5.0MP **UHD**



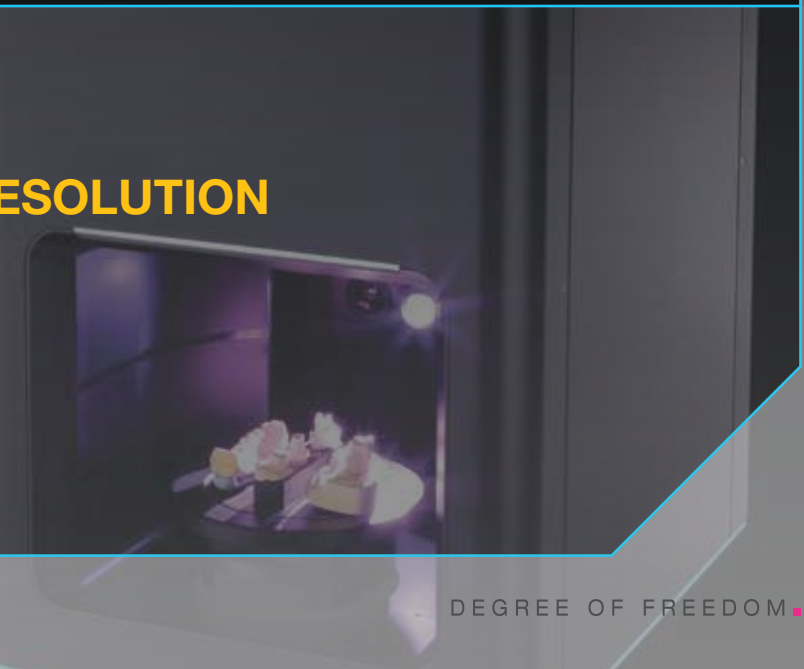
FREEDOM **UHD**



FREEDOM UHD WITH **ULTRA HIGH-DEFINITION RESOLUTION**

The All-New Freedom UHD scanner is a premium 3D scanner with powerful Ultra High-Definition (UHD) resolution and DOF's patented Stable Scan Stage (SSS) technology.

5.0MP cameras of the Freedom UHD provides data with the sharpest margin lines.



MORE
POWERFUL
THAN EVER

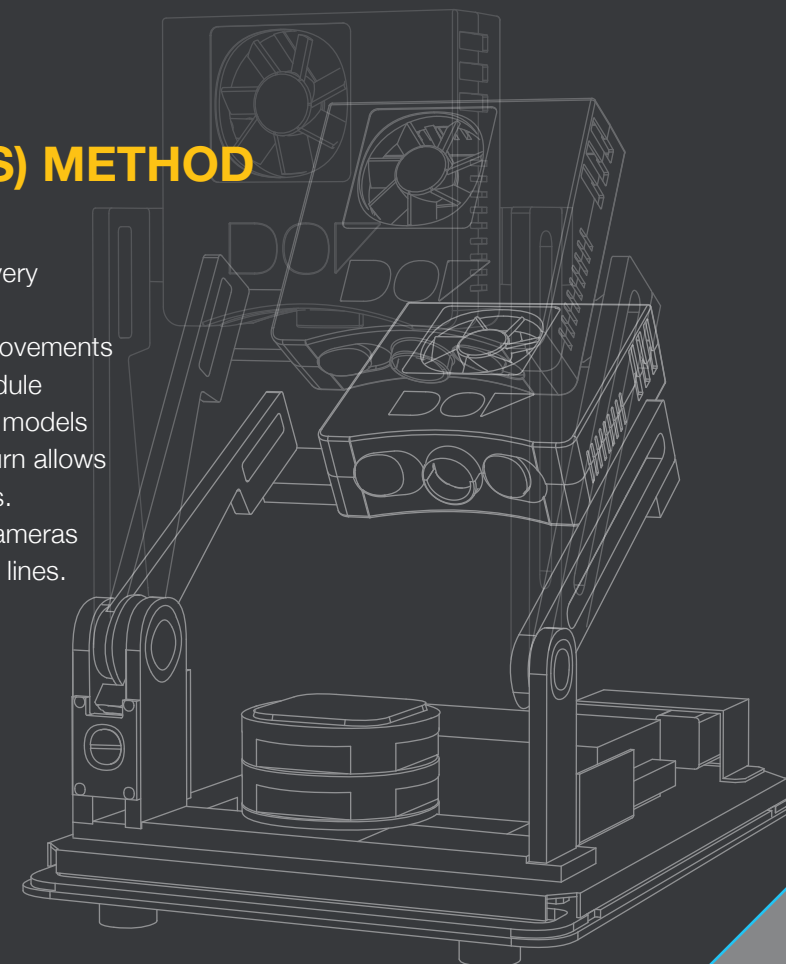


FREEDOM^{HD}

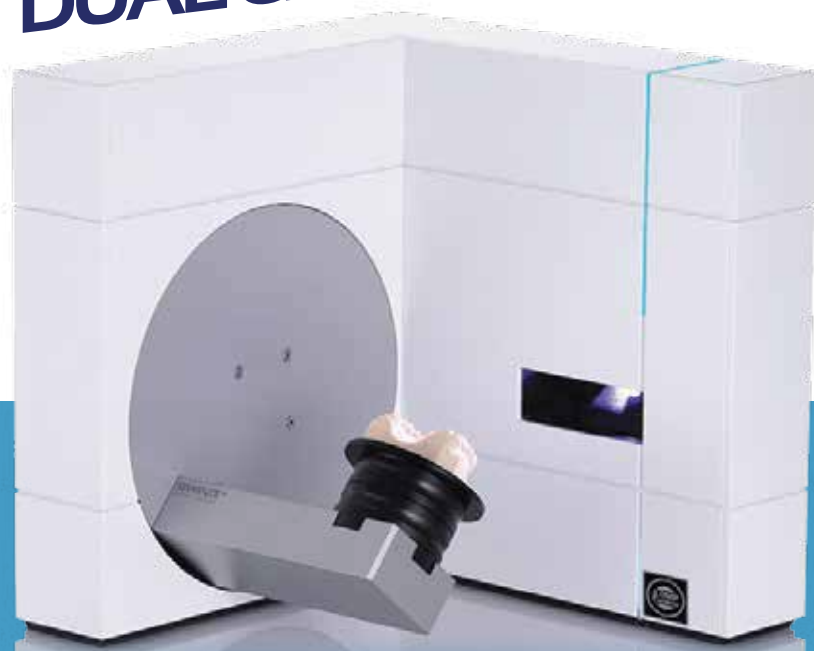


FREEDOM HD ^{WITH} STABLE SCAN STAGE (SSS) METHOD

The Freedom HD is a premium scanner with DOF's very own SSS method patented technology. The SSS method allows for the camera to provide movements over the scanned part. As the cameras and light module rotate around the center of the scanning stage, your models remain stable during the scanning process. This in turn allows for the ability to scan without any fixture or adhesives. The Freedom HD is now more precise with 2.0MP cameras which provides even better data with sharper margin lines.

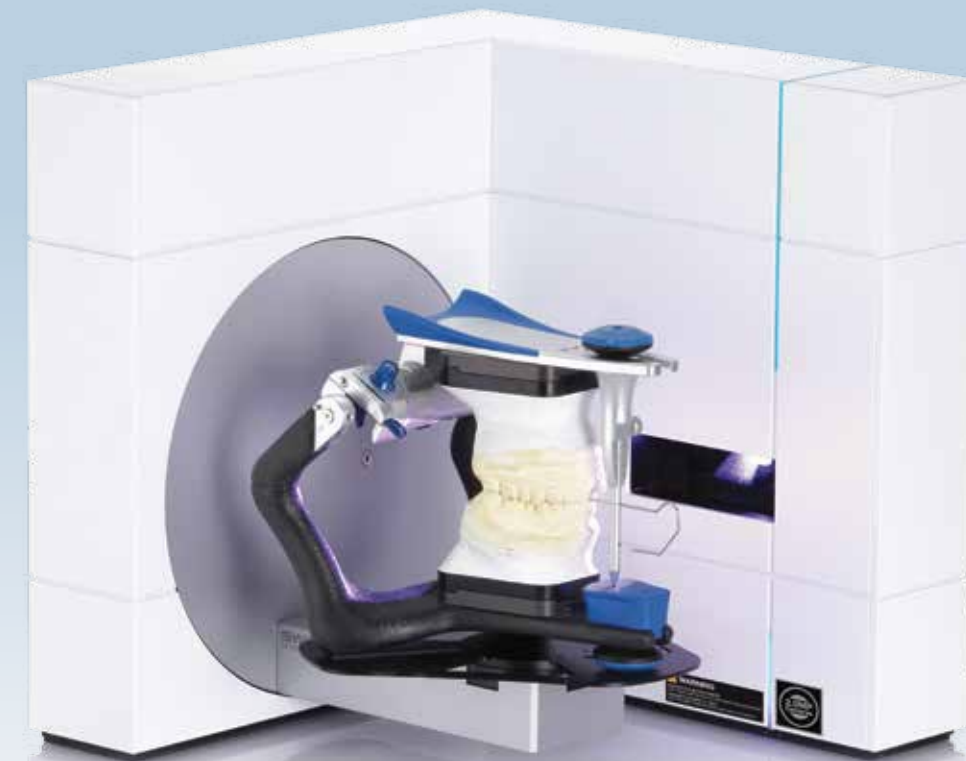


**2.0 MP^{HD}
DUAL CAMERAS**



EVEN MORE UNIQUE COMPACT FAST

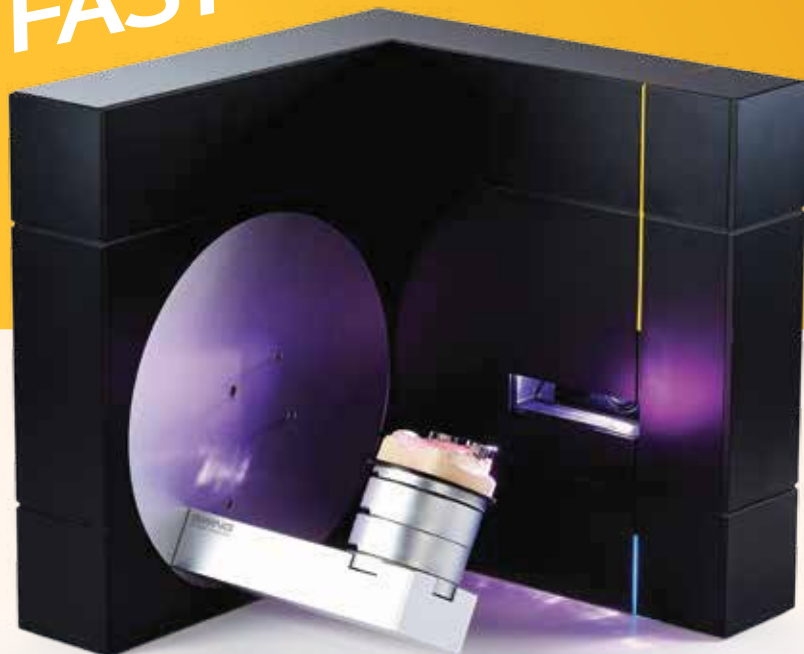
SWING^{HD}



**SWING IS BACK
WITH EVEN MORE PRECISION**

Swing HD with 2.0MP dual cameras is now available for even more precise data. Open and unique design also allows for the scanning of virtually any articulator.

UNIQUE
COMPACT
FAST



SWING



SWING WITH UNIQUELY DESIGNED L-SHAPE

The Swing scanner was designed with a unique yet open concept. The open design allows for the scanning of virtually any articulator. During the scanning process, the articulator will rotate from a flat position on a transfer plate to achieve the most precise occlusion relationship.



UPGRADE YOUR BASIC



EDGE



UPGRADE YOUR BASIC EDGE

The entry scanner Edge with competitive price and excellent performance. With the model swing method, it has the fastest scanning speed with 1.3MP cameras. It provides essential functions of Impression Scanning and All-in-One Scanning.





ScanApp



SIMPLE, SMART and INTUITIVE Scanning Software

ScanApp brings you all new look and refined features that let you do scanning in ways that are simple, smart and intuitive.



Instant Transition to exocad[†]

Start your designs on exocad dental DB[†] instantly from ScanApp with a single click.



Manual Scanning

Allows to freely jump to desired scanning steps.



Hybrid Scanning

Optical scanning and tactile scanning can be done in one software that you can get faster and more accurate data. Position of implant scan body would greatly be enhanced by using this feature.



Auto Alignment

Auto Alignment can save your time. Software finds the best matching points automatically and matches data.



Re-load

Change exocad dental DB[†] setting without closing scanning program and re-load the edited data.



Virtual Articulation Set Up

Automatic occlusal registration is now made possible with our revolutionary VA set-up mode without the need for using a metal transfer plate.

[†]exocad and exocad dental DB are trademarks of exocad from Germany.



DEGREE OF FREEDOM

SCANNER

SCAN ENGINE

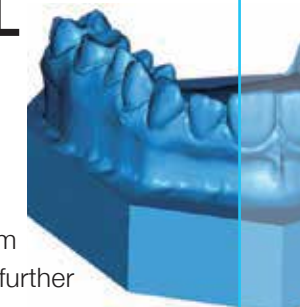
The optimized 3D scan projector not only provides you with the best scan data, but also turns off automatically when not in use. The scan engine contains a modular design for easy replacement and an even faster solution for any issues.



FREEDOM^{HD}
FREEDOM^{HD}
SWING^{HD}
SWING
EDGE
PRIME

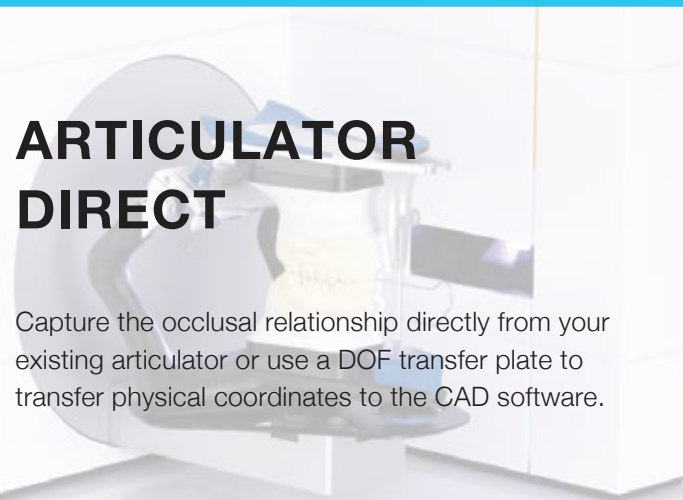
INTERPROXIMAL SCANNING

All necessary features are now available to capture all critical data from your gypsum model or impression for further orthodontic planning.



ARTICULATOR DIRECT

Capture the occlusal relationship directly from your existing articulator or use a DOF transfer plate to transfer physical coordinates to the CAD software.



TRANSFER PLATES

Transfer plates available for Artex, Adesso, Bio-Art, Kavo, and SAM.[†]



[†] Artex, Adesso, Bio-art, KaVo, SAM are trademarks of respective companies.

PENCIL MARK SCANNING

We understand that sometimes you rely on your hand drawn pencil marks. Texture scanning brings your hand drawn markings to life in your CAD software.



IMPLANT MULTI-DIE SCANNING

Custom abutments can now be sprayed with ease and less mess.



ULTRA HIGH-DEFINITION SCANNING

You can obtain more precise data with 5.0MP or 2.0MP cameras.



FREEDOM^{HD} **FREEDOM^{HD}**

IMPRESSION SCANNING

Our innovative HSS algorithm enables you to capture areas that are difficult to scan and output final positive models.



ALL-IN-ONE SCANNING

Scan an upper, lower, and dies all at once. Save almost 50% off your total work time.



ALL in 1

MILLING MACHINE



SHARP2 PLUS

ONBOARD COMPUTER

ALL in 1 MILLING MACHINE is back with onboard computer and touch screen.



5-AXIS SIMULTANEOUS PROCESSING

It features 5-axis simultaneous machining, milling on X, Y, Z axis and rotating blocks and discs 360 degrees in both clockwise and counterclockwise movements.

EASY TO USE MILLING SOFTWARE

MotionApp is a milling machine control software which is intuitive that everyone can use it easily.



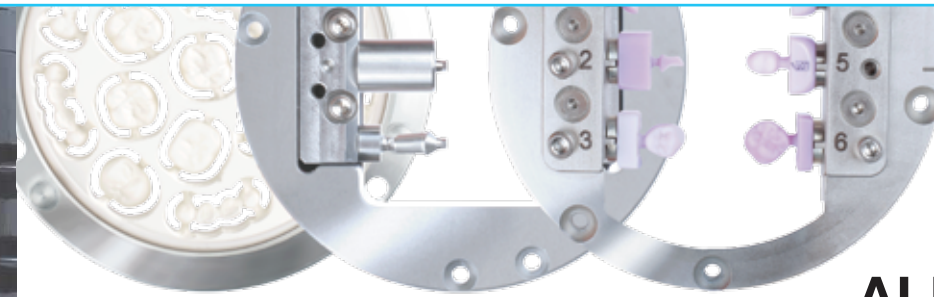


DEGREE OF FREEDOM

MILLING

12 STATION AUTOMATIC TOOL CHANGER

Sharp2 Plus features an Automatic Tool Changer with a 12 tool capacity. Automatic tools sensors measure tool lengths and detects tool breakage automatically.



ALL IN 1

The 'All in 1' milling machine is able to manufacture various materials such as zirconia, WAX, PMMA, and hybrid ceramic. Also, glass ceramic and titanium are able to be milled using with additional holders.

HIGH QUALITY SPINDLE

The Sharp2 Plus is ideal for milling a variety of materials with precision. Specs include a maximum spindle speeds of 60,000 rpms, and concentricity at less than 2µm.

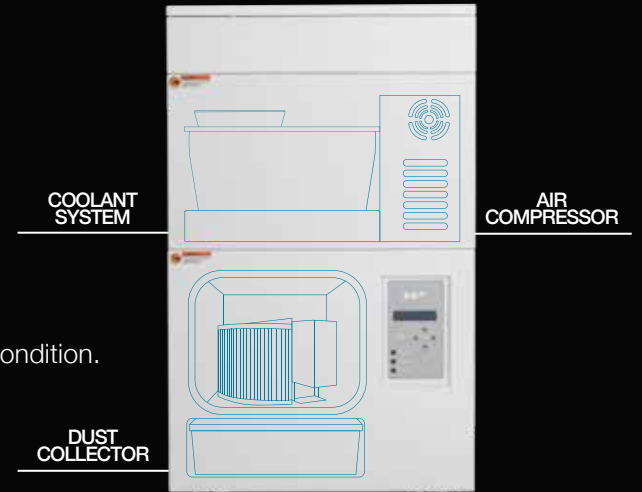
DURABLE MILLING TOOLS

Durable tools are available for all kinds of materials.



USER-FRIENDLY COMPLETE PACKAGE

A dust collector, a water pump, and a compressor made by DOF are included in a package which provides even more stable milling condition. Maintenance is easy with user-friendly design.



WET & DRY COMPATIBLE MILLING

It is available to choose milling method for materials with wet and dry compatible milling. In addition, waterproof function prevents remaining humidity from permeating into milling area.



STURDY & LOW-VIBRATION

Regardless of its compact size, the internal structure of steel components deliver optimal milling speeds and durability.



FACE SCANNER



SNAP



OBTAIN MORE ACCURATE DATA

The face scanner SNAP allows to scan face of a patient and to illustrate it into 3D data. This helps to manufacture more accurate prosthetic appliances by setting the mid line and smile line with looking at actual face data.

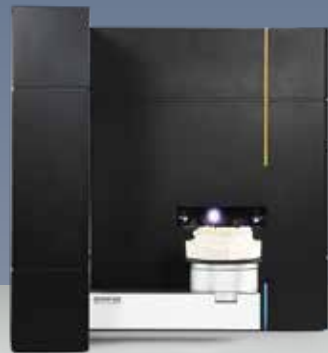
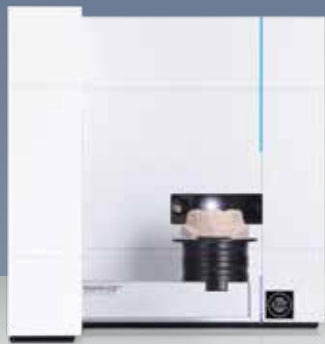
THE MOST CONVENIENT FACE SCANNER EVER

SNAP is an user friendly face scanner that anyone can use. Install the SNAP with a tablet PC and scan a face more easily and conveniently.



DOF SCANNERS OVERVIEW

& TECHNICAL SPECIFICATION



FREEDOM^{HD}

SSS method

Dual 5.0MP cameras

Articulator-DIRECT scanning

Transfer plate

Interproximal scanning

All-in-One scanning

Hybrid scanning

330(W) x 495(H) x 430(D) mm

17kg

FREEDOM^{HD}

SSS method

Dual 2.0MP cameras

Articulator-DIRECT scanning

Transfer plate

Interproximal scanning

All-in-One scanning

Hybrid scanning

330(W) x 495(H) x 430(D) mm

17kg

SWING^{HD}

Model swing method

Dual 2.0MP cameras

Articulator-DIRECT scanning

Transfer plate

Interproximal scanning

All-in-One scanning

-

330(W) x 330(H) x 330(D) mm

14kg

SWING

Model swing method

Dual 1.3MP cameras

Articulator-DIRECT scanning

Transfer plate

Interproximal scanning

All-in-One scanning

-

330(W) x 330(H) x 330(D) mm

14kg

COMMON
FEATURES

Axis : 2 axis

Light Source : White light LED

Technology : Structured light

Accuracy : 10μm[†]

[†]The scanning accuracy may vary depending on the working environment or your model

Output Format : STL, OBJ, OFF

Power : 100-240V(AC), 50-60 Hz

O/S : Windows 7, 8.1, 10 (64bit)

COMMON
FEATURES

Axis : 2 axis

Light Source : White light LED

Technology : Structured light

Accuracy : 10μm[†]

[†]The scanning accuracy may vary depending on the working environment or your model

Output Format : STL, OBJ, OFF

Power : 100-240V(AC), 50-60 Hz

O/S : Windows 7, 8.1, 10 (64bit)

DOF PRODUCTS OVERVIEW

& TECHNICAL SPECIFICATION



EDGE

SNAP

SHARP2PLUS

Model swing method	Rated Voltage :	DC 5V / 0.6A
Dual 1.3MP cameras	Rated Power :	3W (Supplying at least 2.5W through a DV 5V)
Articulator-DIRECT scanning	Resolution - Depth :	640x480 (VGA)
Transfer plate	Resolution - Color :	1920x1080 *FHD)
Interproximal scanning	Depth Capture Distance :	0.2 to 1.5m
All-in-One scanning	Output Format :	OBJ (with ScanApp)
-	Measurement Method :	IR light triangulation
395(W)x 275(H)x400(D)mm	Light Source :	Infrared laser(Class 1)
13kg	Interface :	USB 3.0
	External Dimensions :	18(W) x 17(H) x 167 *D) mm
	Weight :	70g

Axis :	5 axis
Milling Material :	Zirconia, PEEK, PMMA, Composite resin, glass ceramic, pre-milled titanium abutment
Loadable Workpiece :	R 98 stepped disc, glass ceramic fixture, pre-milled fixture
Spindle Speed :	Up to 60,000rpm
Number of Tools Housed :	12
Power Requirements :	180-264V(AC), 50-60Hz
Power Consumption :	480Watt
External Dimensions :	590(W) x 495(H) x 430(D) mm
External Dimensions with Tables :	590(W) x 1,470(H) x 445(D) mm
Weight :	75kg
Weight with Tables :	184kg



**We deliver
innovative ideas and complete
CAD/CAM solutions for the
dental industry.**

doflab.com

DOF Korea Headquarters

info@doflab.com / +82 70-5057-5577
601-602, 77, Seongsuil-ro,
Seongdong-gu, Seoul, 04790

DOF Canada

info@doflab.com / +1 647-880-7300
#6-527 Edgeley Blvd.
Concord, ON L4K 4G6

DOF China

info@doflab.cn / +86 769 2198 6968
#2106, Xinghe Town Square, No.69 Jianshe Road,
Machong Town, Dongguan, Guangdong, 523133

DOF Europe GmbH

info@doflab.de / +49 611 3600 3107
Gustav-Stresemann-Ring 12-16,
Wiesbaden, 65189

CREATE YOUR MASTERPIECE



www.doflab.com

