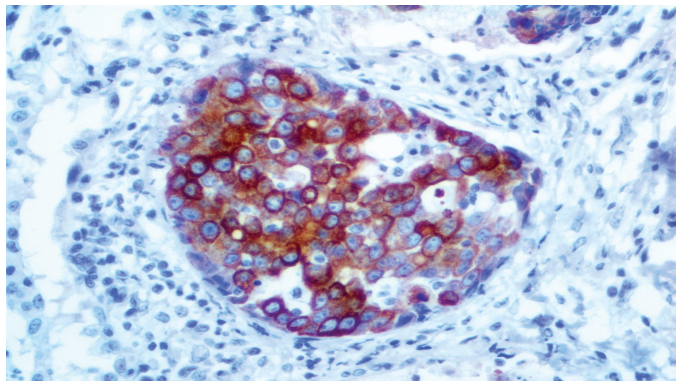


# Cytokeratin 20

Clone: EP23  
Rabbit Monoclonal



*Inset: IHC of Cytokeratin 20 on a FFPE Colon Cancer Metastasis to Lung Tissue*

## Intended Use

For In Vitro Diagnostic Use.

This antibody is intended for use in Immunohistochemical applications on formalin-fixed paraffin-embedded tissues (FFPE), frozen tissue sections, and cell preparations. Interpretation of results should be performed by a qualified medical professional.

\* The Cytokeratin 20 antibody, clone EP23, has been manufactured using Epitomics RabMab® technology covered under Patent No.s 5,675,063 and 7,402,409.

## Immunogen

A synthetic peptide corresponding to residues near the C-terminus of human CK20.

## Summary and Explanation

Cytokeratin 20 (CK20) is a 46 kDa intermediate filament protein whose expression is restricted primarily to gastric and intestinal epithelium, urothelium, and Merkel cells. Cytokeratin 20 is a Type I cytokeratin. It is a major cellular protein of mature enterocytes and goblet cells found in the gastric and intestinal mucosa.

CK 20 is expressed in Adenocarcinomas of the colon, stomach, pancreas and biliary system. It is also expressed in Mucinous Ovarian Tumors, Transitional-cell Carcinomas of the urinary tract, and Merkel-cell Carcinomas. Cytokeratin 20 is useful in the differentiation of specific types of simple epithelial cells of the urinary tract and normal and malignantly-transformed epithelia. This antibody is essentially non-reactive in Squamous Cell Carcinomas and Adenocarcinomas of the Breast, Lung, and Endometrium, Non-mucinous Tumors of the Ovary, and Small-cell Carcinomas. This antibody is often used in conjunction with CK7 and other antibodies to distinguish Colon Carcinomas (CK20+) from Ovarian, Pulmonary, and Breast Carcinomas.

<b>Antibody Type</b>	Rabbit Monoclonal	<b>Clone</b>	EP23
<b>Isotype</b>	IgG	<b>Reactivity</b>	Paraffin, Frozen
<b>Localization</b>	Cytoplasmic	<b>Species Reactivity</b>	Human, Predicted: Rat, Goat, Pig, Marmoset
<b>Control</b>	Colon Carcinoma, Colon Mucosa, Bladder		
<b>Application</b>	Carcinomas Of Unknown Primary Site, Colon & Gastrointestinal Cancer, Kidney & Urothelial Cancer, Lung Cancer, Ovarian Cancer		

## Presentation

Anti-Cytokeratin 20 is a rabbit monoclonal antibody derived from cell culture supernatant that is concentrated, dialyzed, filter sterilized and diluted in buffer pH 7.5, containing BSA and sodium azide as a preservative.

<b>Catalog No.</b>	<b>Presentation</b>	<b>Dilution</b>	<b>Volume</b>
BSB 6702	Predilute	Ready-to-Use	3.0 mL
BSB 6703	Predilute	Ready-to-Use	7.0 mL
BSB 6704	Predilute	Ready-to-Use	15.0 mL
BSB 6705	Concentrate	1:50-1:200	0.1 mL
BSB 6706	Concentrate	1:50-1:200	0.5 mL
BSB 6707	Concentrate	1:50-1:200	1.0 mL

## Control Slides Available

<b>Catalog No.</b>	<b>Quantity</b>
BSB-9140-CS	5 slides

**Storage** Store at 2-8°C (Control Slides: Store at 20-25°C)

## Precautions

1. For professional users only. Results should be interpreted by a qualified medical professional.
2. This product contains <0.1% sodium azide (NaN<sub>3</sub>) as a preservative. Ensure proper handling procedures are used with this reagent.
3. Always wear personal protective equipment such as a laboratory coat, goggles, and gloves when handling reagents.
4. Dispose of unused solution with copious amounts of water.
5. Do not ingest reagent. If reagent is ingested, seek medical advice immediately.
6. Avoid contact with eyes. If contact occurs, flush with large quantities of water.
7. Follow safety precautions of the heating device used for epitope retrieval (TintoRetriever Pressure Cooker or similar).
8. For additional safety information refer to Safety Data Sheet for this product.
9. For complete recommendations for handling biological specimens, please refer to the CDC document, "Guidelines for Safe Work Practices in Human and Animal Medical Diagnostic Laboratories" (see References in this document).

## Stability

**This product is stable up to the expiration date on the product label.**

Do not use after expiration date listed on package label. Temperature fluctuations should be avoided. Store appropriately when not in use and avoid prolonged exposure to room temperature conditions.

## Specimen Preparation

**Paraffin sections:** The antibody can be used on formalin-fixed paraffin-embedded (FFPE) tissue sections. Ensure tissue undergoes appropriate fixation for best results. Pre-treatment of tissues with heat-induced epitope retrieval (HIER) is recommended using Bio SB ImmunoDNA Retriever with Citrate (BSB 0020-BSB 0023), ImmunoDNA Retriever with EDTA (BSB 0030-BSB 0033), or ImmunoDNA Digestor (BSB 0108-0112). See reverse side for complete protocol. Tissue should remain hydrated via use of Bio SB Immuno/DNA Washer solutions (BSB 0029 & BSB 0042).

**Frozen sections and cell preparations:** The antibody can be used on acetone-fixed frozen sections and acetone-fixed cell preparations.

## IHC Protocol

1. Cut and mount 3-5 micron formalin-fixed paraffin-embedded tissues on positively charged slides such as Bio SB Hydrophilic Plus Slides (BSB 7028).
2. Air dry for 2 hours at 58° C.
3. Deparaffinize, dehydrate, and rehydrate tissues.
4. Subject tissues to heat induced epitope retrieval (HIER) using a suitable retrieval solution such as ImmunoDNA Retriever with Citrate (BSB 0020-BSB 0023) or EDTA (BSB 0030-BSB 0033).
5. Any of three heating methods may be used:

### a. TintoRetriever Pressure Cooker or Equivalent

Place tissues/slides in a staining dish or coplin jar containing the ImmunoDNA Retriever with Citrate or EDTA and place on trivet in the pressure cooker. Add 1-2 inches of distilled water to the pressure cooker and turn heat to high. Incubate for 15 minutes. Open and immediately transfer slides to room temperature.

### b. TintoRetriever PT Module or Water Bath Method

Place tissues/slides in a pre-warmed staining dish or coplin jar containing the ImmunoDNA Retriever with Citrate or EDTA at 95°-99° C. Incubate for 30-60 minutes.

## c. Conventional Steamer Method

Place tissues/slides in a pre-warmed staining dish or coplin jar containing the ImmunoDNA Retriever with Citrate or EDTA in a steamer, cover and steam for 30-60 minutes.

6. After heat treatment, transfer slides in ImmunoDNA Retriever with Citrate or EDTA to room temperature and let stand for 15-20 minutes.
7. For manual IHC, perform antibody incubation at ambient temperature. For automated IHC methods, perform antibody incubation according to instrument manufacturer's instructions.
8. Wash slides with ImmunoDNA washer or DI water.
9. Continue IHC protocol. Wash slides between each step with ImmunoDNA washer solution.

## Abbreviated Immunohistochemical Protocol

Step	ImmunoDetector AP/HRP	PolyDetector AP/HRP	PolyDetector Plus HRP
Peroxidase/AP Blocker	5 min.	5 min.	5 min
Primary Antibody	30-60 min.	30-60 min.	30-60 min.
1st Step Detection	10 min.	30-45 min.	15 min.
2nd Step Detection	10 min.	Not Applicable	15 min.
Substrate- Chromogen	5-10 min.	5-10 min.	5-10 min.
Counterstain/Coverslip	Varies	Varies	Varies

## Mounting Protocols

For detailed instructions using biodegradable permanent mounting media such as XyGreen PermaMunter (BSB 0169-0174) or organic solvent based resin such as PermaMunter (BSB 0094-0097), refer to PI0174 or PI0097.









## Product Limitations

Due to inherent variability present in immunohistochemical procedures (including fixation time of tissues, dilution factor of antibody, retrieval method utilized, and incubation time), optimal performance should be established through the use of positive and negative controls. Results should be interpreted by a qualified medical professional.

## References

1. Moll R, et al. Am j Pathol. 1992;427-47
2. Moll R, et al. J Cell Biol. 1990;111:567-580
3. Moll R, et al. Cell. 1982;31:11-24
4. Nan Ping Wang, et al. Appl Immuno. 1995;3(2):99-107
5. U.S. Department of Health and Human Services: Centers for Disease Control and Prevention. Guidelines for Safe Work Practices in Human and Animal Medical Diagnostic Laboratories. Supplement/Vol. 61, January 6, 2012.  
<https://www.cdc.gov/mmwr/pdf/other/su6101.pdf>

## Symbol Key/Légende des symboles/Erläuterung der Symbole

	QAdvis EAR AB Ideon Science Park Scheelevägen 17 SE-223 70 Lund, Sweden	 Storage Temperature Limites de température Zulässiger Temperaturbereich	 Manufacturer Fabricant Hersteller	 Catalog Number Référence du catalogue Bestellnummer
	In Vitro Diagnostic Medical Device Dispositif médical de diagnostic in vitro In-Vitro-Diagnostikum	 Read Instructions for Use Consulter les instructions d'utilisation Gebrauchsanweisung beachten	 Expiration Date Utiliser jusque Verwendbar bis	 Lot Number Code du lot Chargenbezeichnung