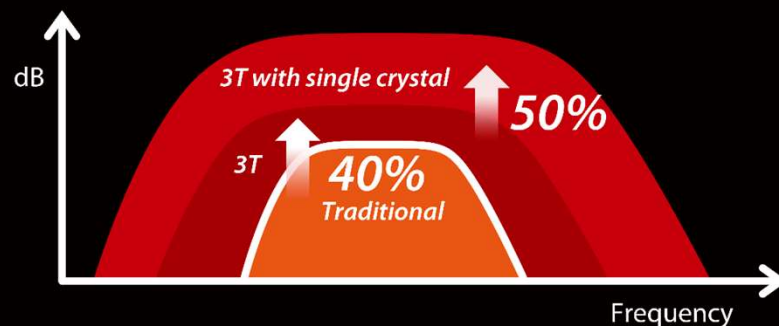


# 'Touch and Bingo' —Cutting-Edge Transducer Technology

## Full-Range Single Crystal Solution



3T technology:

- Better acoustic energy conversion/reduce probe "cross talk"/thermal control

Clinical Benefit of Single Crystal transducers with 3T technology:

- Better penetration
- Better resolution

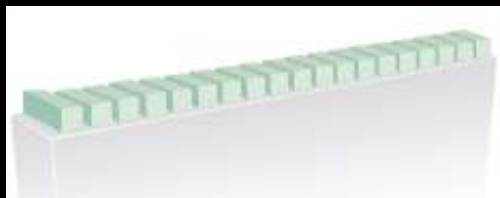
Single crystal transducer:

- Improve acoustic transmission efficiency

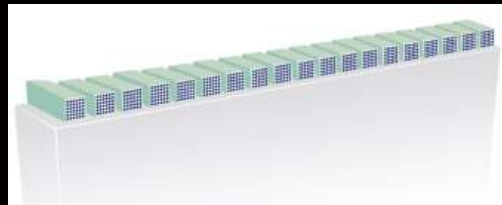
# 'Touch and Bingo' —Cutting-Edge Transducer Technology

## ComboWave

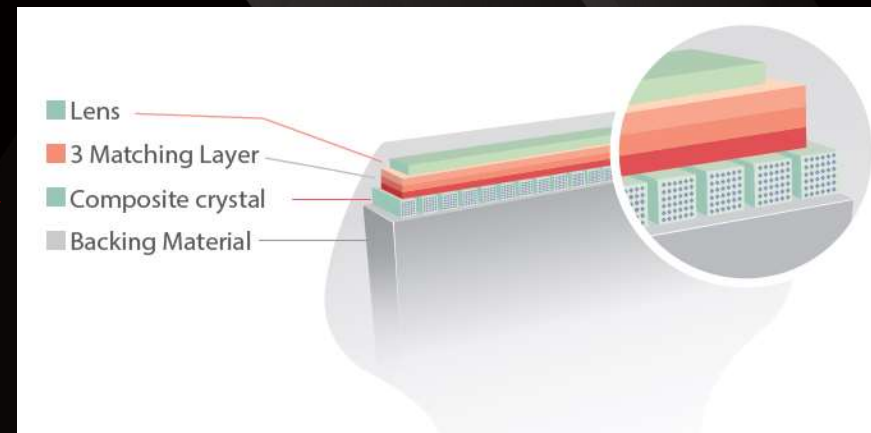
- Better Spatial/Contrast Resolution
- Better Image Uniformity



Traditional Crystal



Composite Crystal

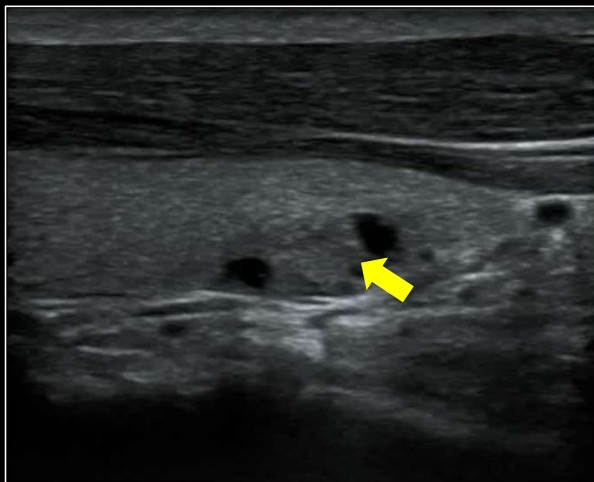


ComboWave  
Composite Crystal with 3T

# 'Touch and Bingo' —Cutting-Edge Transducer Technology

## ComboWave

- Better Spatial/Contrast Resolution
- Better Image Uniformity



Traditional Linear Image



ComboWave Linear Image