

Histo-Pro 200 Vacuum Tissue Processor



The Instrument

Histo-Pro 200 set a new standard in vacuum tissue processing.

Its unique reagent monitoring and management delivers significant reagent cost savings.

Superior process control, functional design, and precise temperature control ensure optimum specimen quality.

An active extraction process ensures efficient reagents quality, which extends paraffin life, improves tissue quality, and reduces operating costs.

S15 User safety is enhanced by a fully enclosed fume system and by the improved reagent bottle and cabinet design to prevent the risk of contact and S17 reagent carry-over.

Through the control panel all the operating parameters like programs, temperatures, vacuum and levels can be freely modified.

3 different reagent level according to sample quantity processed.

S19 Histo-Pro 200 is available with Automatic fill/drain reagent system to prevent the risks of reagents contact. (Optional)

Display and Software

S5 Large Touch-screen color Liquid Crystal Display (LCD) User-friendly, smart icons software.

Alarm system for wrong operation and troubles

S16 Multiple specimen protection system.

The operator can set the different programs varied in duration, temperature.

Freely customized programs for the cleaning of the reagents retort.



TISSUE PROCESSING

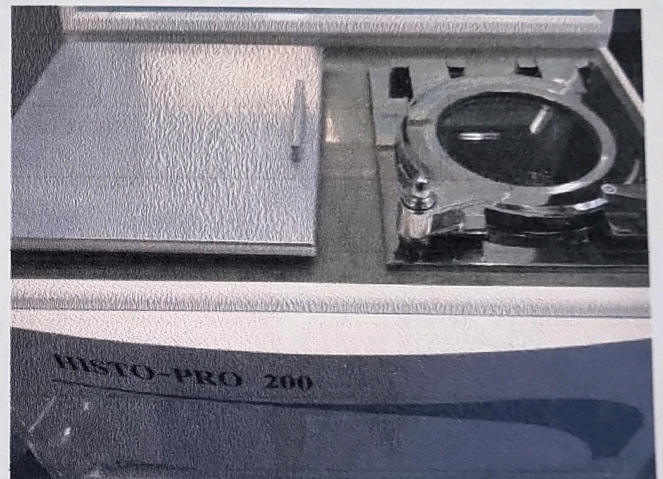


Capacities

Capacity about 200 cassettes *S1*
 20 programs that consist of up to 10 reagent and 3 paraffin wax steps *S4*
 Time per program step: 0 to 99 hours, 59 minutes
 Up to 200 cassettes can be processed *S1*
 Wax clean program
 10 reagent bottles *S2*
 3 wax baths a temperature: 50°C - 65°C *S3*
 2 cleaning solution bottles
 1 condensate bottle
 1 Carbon filter bottle *S18*
 Maximum bottle volume: 4.0 lt *S4*

Retort

Reagent volume: 6.1 Lt
 Temperature (paraffin): 50°C - 65°C
 Temperature (reagents): ambient or 35°C
 Temperature (cleaning reagents): 50°C - 65°C
 Temperature accuracy: + 1°C
 Filling time: up to 5 min
 Drain time: up to 5 min
S11 { Impregnation vacuum: -70 kPa (g)
 Impregnation pressure: 35 kPa (g)
 Fill vacuum: -70 kPa (g)
 Drain pressure: 35 kPa (g) } *S10* } *S9*



Technical Data

Nominal voltage: AC 220 V
 Nominal frequency: 60 Hz
 Main fuses: 10 A
 Nominal power: 1500 V/A
 Dry weight, unpacked: approx. 100 kg
 Weight, packed: 120 kg
 Operating temperature range: 15 °C to 35 °C
 Relative humidity: 10 to 80 %
 Recirculation (pump in/out): ON/OFF
 Time between cycles: 15 min

Product

Histo-Pro 200 Vacuum Tissue Processor

Size

Unit

Packaging

1 pc

Code

HistoPro200

1.2 Information and use of the instrument

The Histo-Pro 200 is an automatic tissue processor is designed for the laboratories of Histology and research.

This recently-built instrument Histo-Line Laboratories home combines the simplicity of use of the same by operators with maximum safety and reliability.

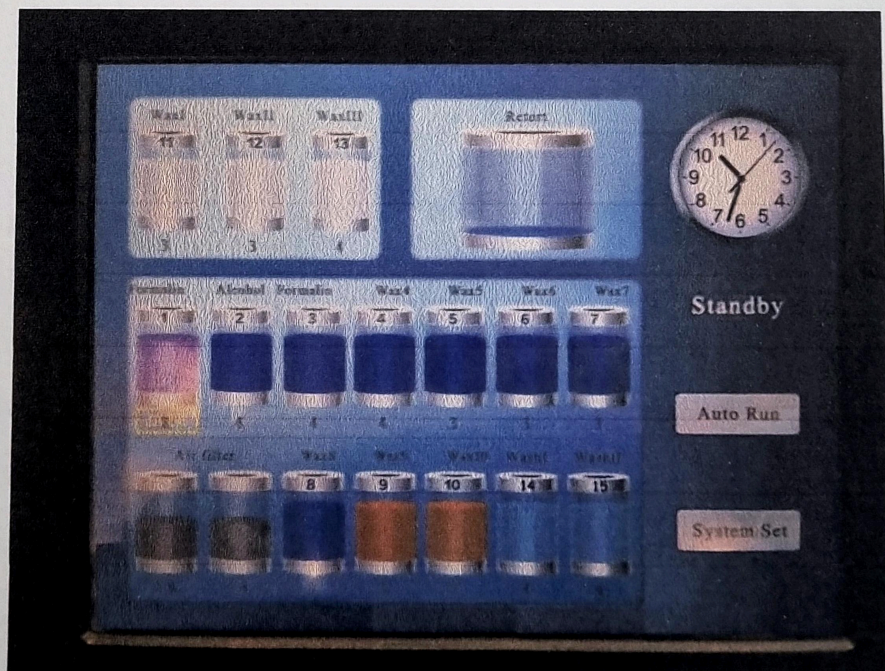
Clarity and ease of access to the controls can be found in front of the instrument, equipped with a touch screen color screen attached to the control panel.

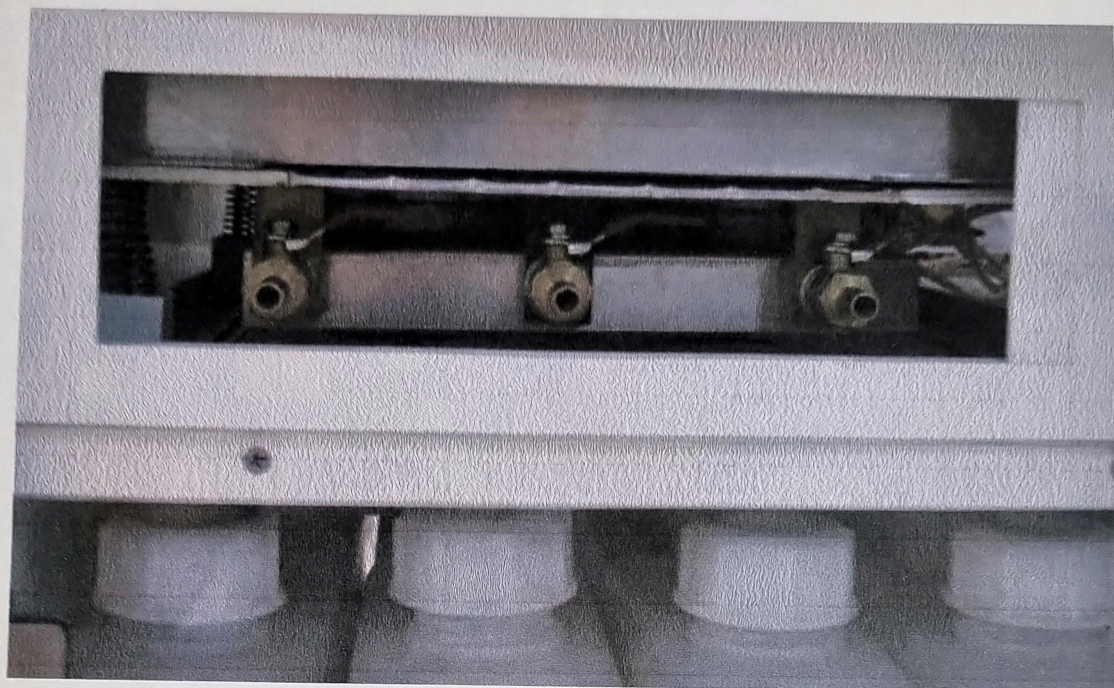
It equipped with an intelligent software and easy to use, with an alarm system as a reminder or failure of the instrument

516 Multiple system of sample protection.

Histo-Pro 200 processes all biological tissues, both with standard protocols and substitutes do not as toxic as Diaphane (xylene substitute and d-lemonene). For both the processor is designed with optimized protocols and adaptable to all circumstances.

57 The software maintains all the necessary protocols, with the option to set: the reagents used, the processing time, the operating temperature, the stirring time.





The operator can set the different programs, diversified by time, temperature; there are also special programs for the cleaning of paraffin rooms.

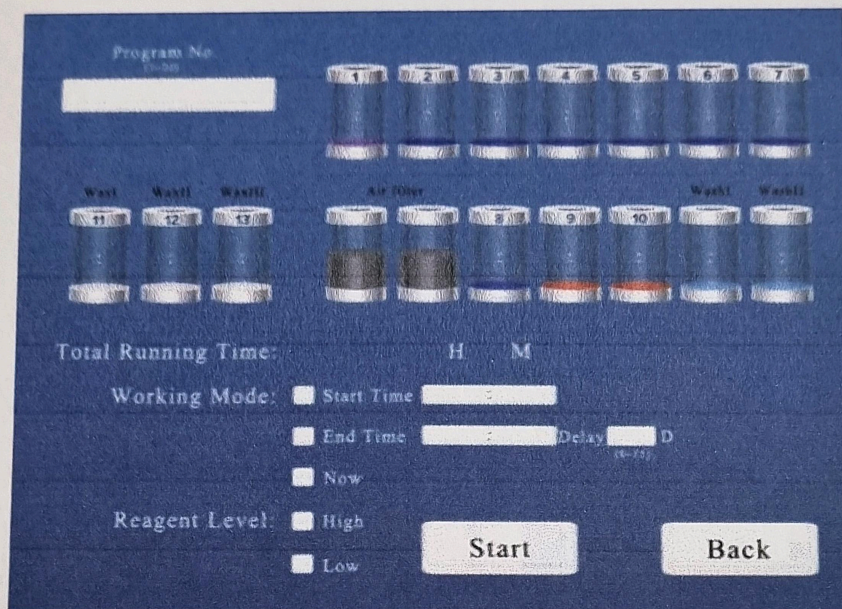
In the front part, behind a small flap retractable, there are the hose connections for filling and emptying of reagent tanks and / or paraffin.

The basket provided offers the possibility of having different load quantities: ~100, ~200, ~300 cassettes with use controlled amounts of reagent according to the load.

Screen 14" a color touch screen, is resistant to solvents, with a graphical representation of the management process of the instrument, through an intuitive software.

5.9 **AUTO RUN- Running a program**

Press **AUTORUN** button in **STAND BY** screen (**Fig.9**), it will display as follow:



(Fig.10)

1. **Program No.:**
Choose required program number to run.
2. **Total Running Time:**
According to program No., it will show the total running time.
3. **Working Mode:**
Flag **Start Time** and enter the time you need the program to run.
Flag **End Time** and enter the time you want the program to finish (example: 8:00 for the morning after).
Delay will add days (24 hours) to program (example: it's Friday and you need the samples ready for Monday at 8:00, then set **3**. Set 1 for the day after, 2 for the day after tomorrow, 3 for the third day)
Now will start the program immediately and finish after timing.
4. **Reagent Level:**
Set **High** or **Low** reagent level in retort, according to cassettes quantity.