



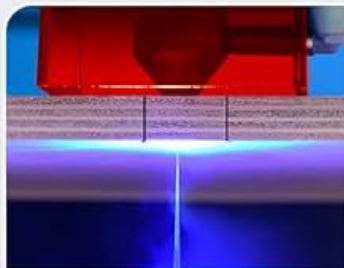
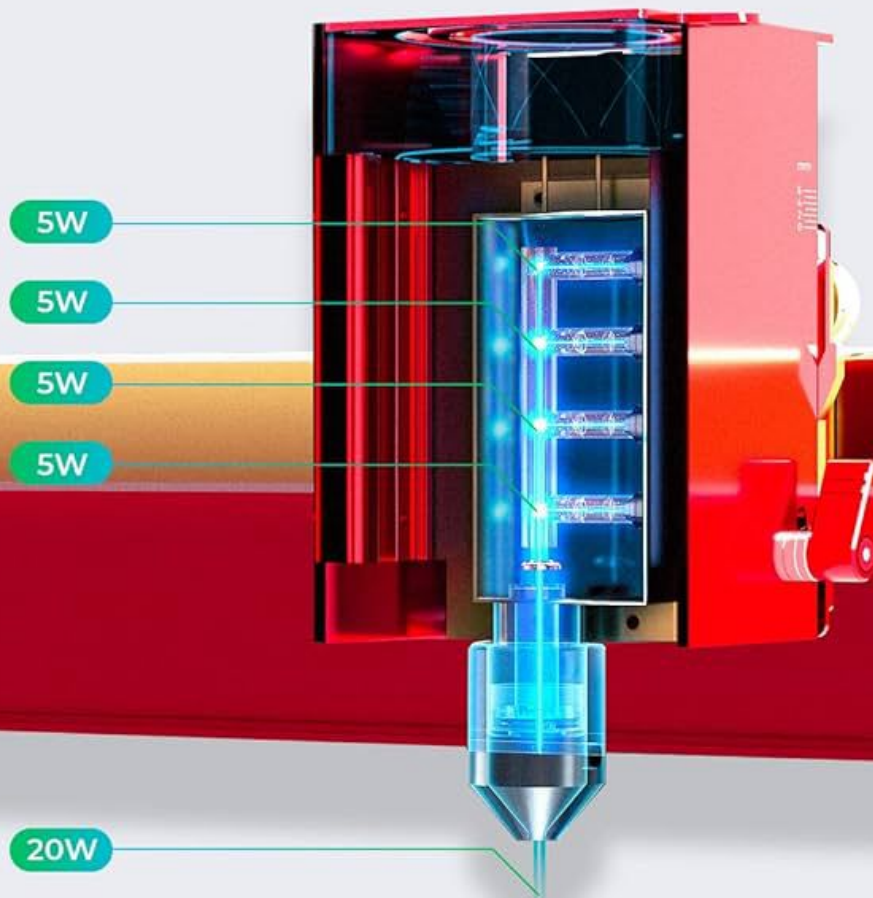
XT TOOL

D1 PRO

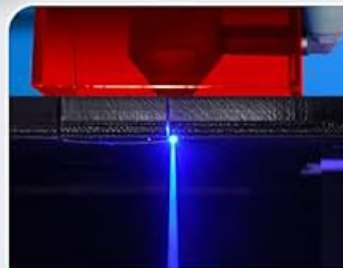
GUIDE!

20W Diode Laser

The Highest Power Cuts the Thickest



One-time Cutting for 12mm Wood



One-time Cutting for 8mm Acrylic



Tags

xTool D120W

Product TutorialMachine

Getting Started

Product Feature

xTool D1 20W Laser Module User Guide

 Add to Bookmark

Updated Jul 24, 2023

Thanks for choosing the 20W laser module for xTool D1!

Follow the user manual or tutorial to fit the laser module on xTool D1. Find the video at:
<https://support.xtool.com/hc/en-us/articles/6363016482327-20W-Laser-Module-User-Guide>

Congrats on your work! It's recommended that you use the 20W laser module with firmware V005 of xTool D1. Follow the steps to update the firmware of xTool D1 V005. (If you use xTool D1 for the first time, please refer to "If you are a new user of xTool D1, refer to the tutorials below" at the end of the page.)

Update the firmware of xTool D1 to V005:

Update the firmware manually.

Download firmware V005 at: <https://support.xtool.com/hc/en-us/articles/6361523513623-Notification-of-the-Update-of-Beta-Versions-xTool-D1-Firmware-V005>

Update the firmware tutorials at: <https://support.xtool.com/hc/en-us/articles/4413827645591-How-to-upgrade-the-xTool-D1-firmware>

What's updated:

Supporting 20W laser modules.

Fixed the restart bug in firmware V003.

If you are the user of Laserbox Basic:

1. Update Laserbox Basic to V1.3.0 version, download at: (Please ignore if updated.)

- On Windows (win7+)
 - https://mblockapp.oss-cn-hongkong.aliyuncs.com/laserbox/laserbox-basic_win.exe
- On macOS
 - https://mblockapp.oss-cn-hongkong.aliyuncs.com/laserbox/laserbox-basic_mac.pkg

2. Pay attention to the following when you use the 20W laser module.

Notes on the software :

When you replace the 20W laser module, open and connect to D1 in Laserbox Basic. The software detects the watt of the laser module automatically. You can check the watt displayed at 20W on the device setting.

When you connect to D1, the default parameters match the recommended parameters of the 20W laser module automatically. It varies from the parameters of the 10W one.

If you open the saved file, the parameters don't change automatically due to the change of laser module. The saved data is still used.

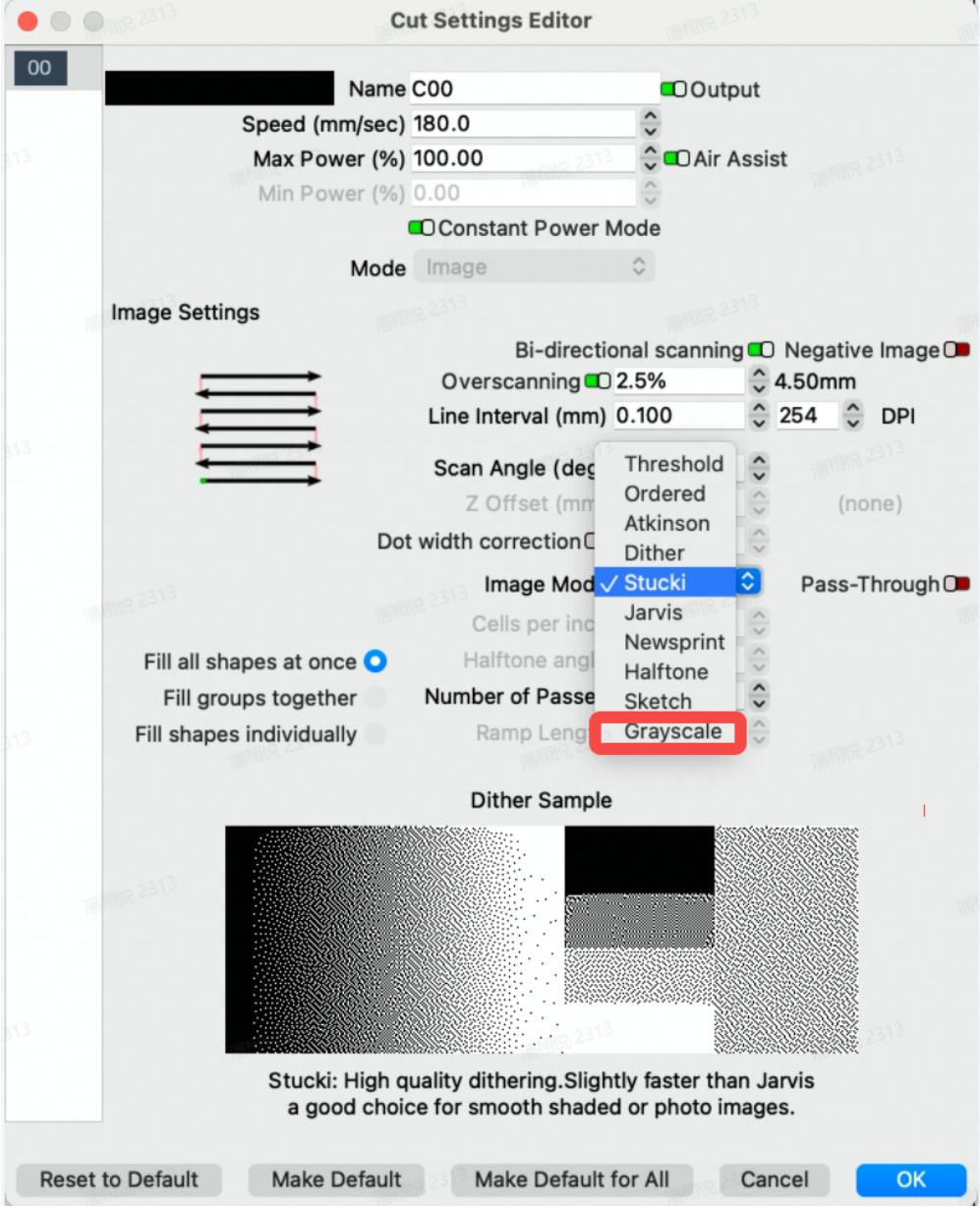
Notes on the hardware and firmware:

They bring faster speed consumption while improving the smoothness of the movement because of the optimization of the algorithm. Therefore, when processing at high speed, there may be a problem of high-speed processing lag due to the performance difference of the user's computer. If you use Laserbox Basic, you can try WiFi or offline processing mode to eliminate the impact on computer performance.

If you are the user of Lightburn:

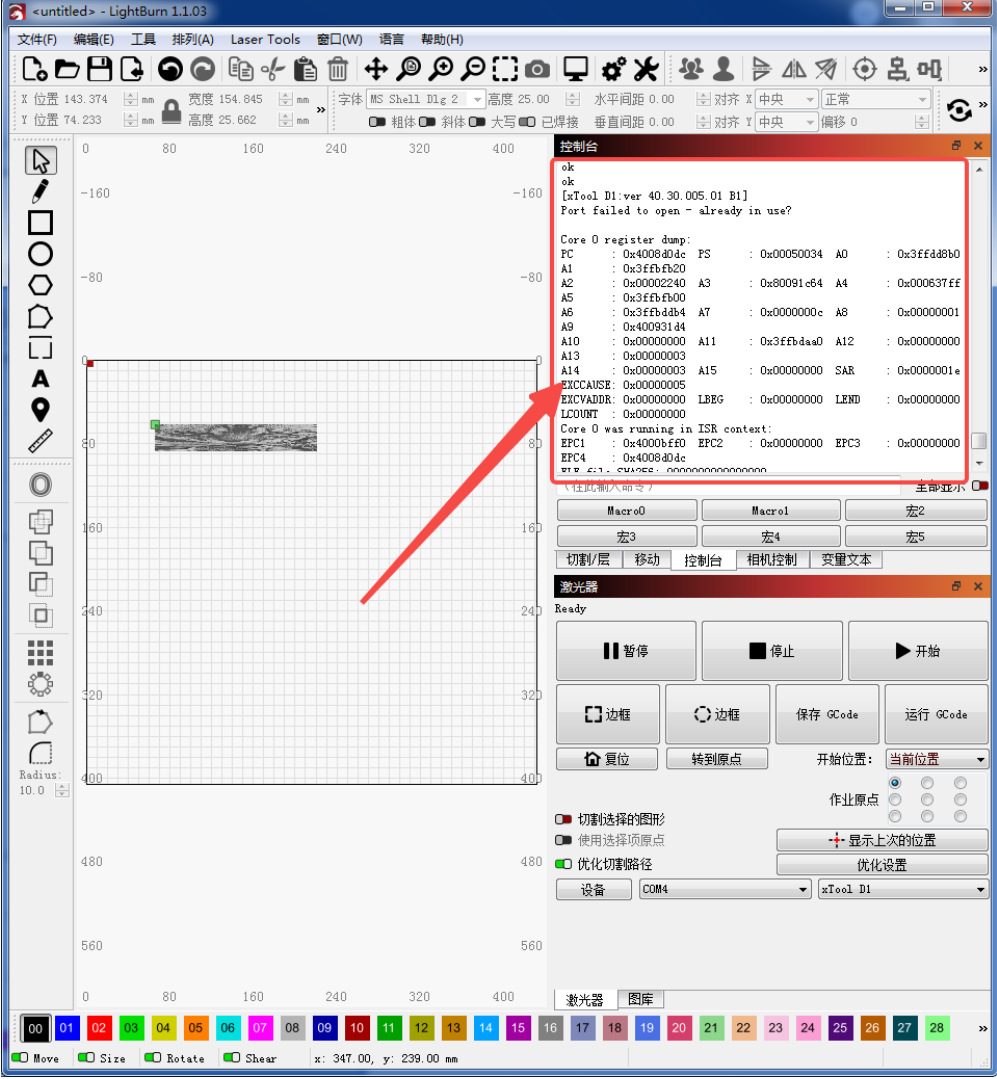
When you update the firmware V005, please note:

It brings faster speed consumption while improving the smoothness of the movement because of the optimization of the algorithm. Therefore, when processing at high speed, there may be a problem of high-speed processing lag due to the performance difference of the user's computer. We suggest you **do not** use "Grayscale" when using bitmap cutting, which can effectively reduce the problem of lag.



When you use Lightburn with D1 connected and then restart D1. There is a probability that the LOG exception will be displayed on the Lightburn (as follows). But this problem does not affect the use.

If you do not want to see the LOG, you can turn on the D1 first and then connect to the device.

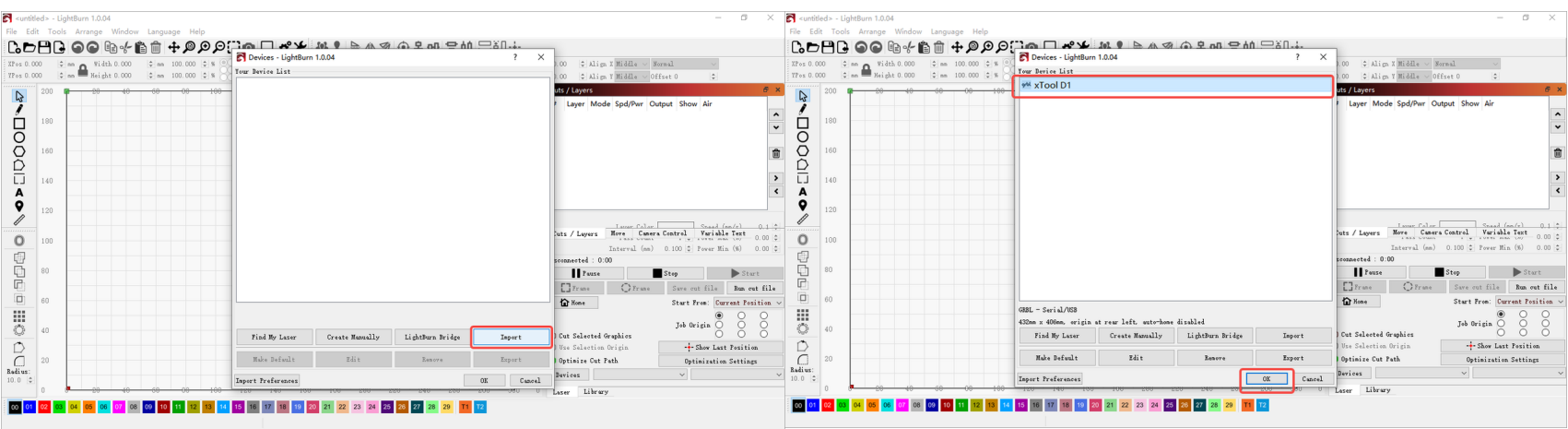


If you have any questions:

- Find FAQs at: https://support.xtool.com/hc/en-us/articles/4409750527383-Troubleshooting-guide-for-xTool-D1#_01FHPM8B41XQWRRVFMAB4BGRXZ ;
- If you can't find your questions in FAQs, you can contact us at: <https://support.xtool.com/hc/en-us/requests/new>. We will follow up as soon as possible.
- Welcome to join our [Testing Program], you can give feedback or discuss problems and experiences with us. Join the program at: <https://m.me/j/Aba3yO4ndOGytjzd/>

If you are a new user of xTool D1, refer to the tutorials below:

- Follow the user manual or tutorial to assemble xTool D1. Find the video at:
<https://support.xtool.com/hc/en-us/articles/4408613060759-Unboxing-and-First-Use-for-xTool-D1>
- Download the software:
 - For a non-professional user, download Laserbox Basic V1.3.0 at:
 - On Windows (win7+)
 - https://mblockapp.oss-cn-hongkong.aliyuncs.com/laserbox/laserbox-basic_win.exe
 - On macOS
 - https://mblockapp.oss-cn-hongkong.aliyuncs.com/laserbox/laserbox-basic_mac.pkg
 - For a professional user, download and install Lightburn, and configure it.
 - Download Lightburn at: <https://lightburnsoftware.com/pages/trial-version-try-before-you-buy>
 - Download D1 configured files at:
https://xtool.zendesk.com/hc/article_attachments/4414379634455/xTool_D1.libdev
 - Import the files in Lightburn:



If you are the user of the 20W laser module, update your xTool D1 to firmware V005. You can refer to the user guide for the 20W laser module.

Was this page helpful?

2 out of 4 found this helpful

Yes

No



Help Ticket

Use this help ticket to submit your issue. We will respond within **1 business day**

[Submit a Ticket](#) >

Services & Help

All Services
xTool Squad
Product Support

Learn & Community

xTool Academy
Q&A Community
Software Learning

Company

About xTool
Ambassador Program
Privacy & Terms

Contact Us

Submit a Ticket
us +1 (888) 528-2293
Live Chat

