



“I can see the goal post  
as good as my grandson”

## INTRODUCTION

Appasamy associates, with 35 years experience in the field of ophthalmology proudly presents **Supraphob Toric** the next generation Toric IOL.



## MATERIAL & OPTIC DESIGN

- Supraphob Toric is made up of premium quality biocompatible Yellow Hydrophobic Acrylic material with the refractive index of 1.49
- Fabricated by nano resolution polish free high technology machine
- The non-touch preloaded system makes IOL implantation simple

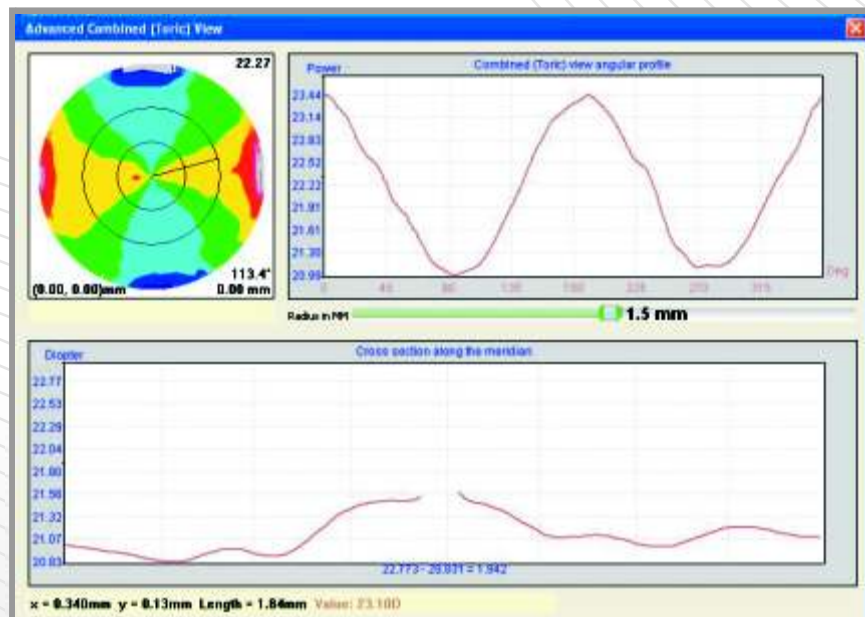
### First time in India

- Atorics - each curvature has an aspheric design
- Markings are made on the anterior surface corresponding to the flat meridian of the lens
- Each marking is made by the diamond tool at 4.5 mm of the optic for easy viewing and positioning



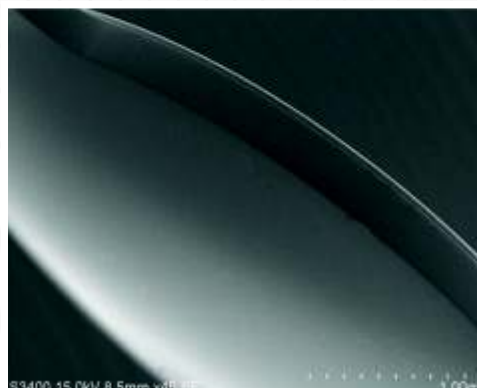
## QUALITY & ACCURACY

- Each Supraphob Toric is individually tested with Optical Bench System called IOLA plus with customised software for analysis of Toric lenses.
- Thanks to the advanced technology & material each Supraphob Toric are assured of higher **MTF** values



## NO TO PCO\*

- Each Supraphob Toric IOL is having 360° square edge posteriorly
- Thanks to the superior quality of the hydrophobic material, the posterior capsule securely adheres to the rear surface of the lens
- Together with the material & square edge optics Supraphob Toric offers excellent barrier to PCO



\* Scanning Electron Microscope

## SPECIAL FEATURES

- The overall Haptic and Optic design offers excellent centration of IOL irrespective of the capsular bag size
- This perfect centration ensures the results of supraphob Toric at the highest level
- The Supraphob Toric IOL has ultraviolet filtering chromophores for the better protection of retina from UV light
- The state of art technology of Supraphob Toric makes sure that its optical performance is equal to that of young natural crystalline lens
- The BLUE BLOCKING YELLOW prevents ARMD



OTHER IOL



SUPRAHOB TORIC IOL

## ASTIGMATISM CORRECTION

Supraphob Toric astigmatism correction IOL is available from +10.00D to +30.00D in the increment of 0.50D

SP TORIC	CYLINDER POWER	CYLINDER POWER AT CORNEAL PLANE
SP TORIC T3	1.5	1.03
SP TORIC T4	2.25	1.55
SP TORIC T5	3.00	2.06
SP TORIC T6	3.75	2.57
SP TORIC T7	4.50	3.08
SP TORIC T8	5.25	3.60
SP TORIC T9	6.00	4.11

## IOL POWER CALCULATION

- Determine the required spherical lens power
- Use manual keratometry and topography for magnitude, orientation, and type of pre-existing corneal astigmatism



## TORIC IOL CALCULATOR

- Considers the effect of incision location and surgically induced cylinder to make a more precise calculation.
- Determines the correct IOL model and optimal axis placement of the IOL in the capsular bag

**APPASAMY ASSOCIATES**  
Empowering Vision

**TORIC LENS CALCULATOR**

Patient Information  
Patient Name \_\_\_\_\_ Surgeon Name \_\_\_\_\_ Additional Information \_\_\_\_\_

Lens Calculation  
Flat K: Enter the Flat Value: 35.00D ~ 50.00D  
@ Flat Axis: Enter the Flat Axis: 0° ~ 180°  
Steep K: Enter the Steep Value: 35.00D ~ 50.00D  
@ Steep Axis: Enter the Steep Axis: 0° ~ 180°  
IOL Spherical Power (P-IOL): 6.0 [Dropdown] 6.0 D ~ 30.0 D  
Surgically Induced Astigmatism (SCA): Enter the SCA: 0.00D ~ 2.00D Default  
Incision Location (IL): Enter the IL: 0° ~ 360°

Calculate Clear Print

Lens Details  
Model:  
Cylinder Power at IOL Plane:  
Cylinder Power at Corneal Plane:

Calculation Details  
Pre-Op Corneal Astigmatism:  
Surgically Induced Astigmatism:  
Crossed-Cylinder Result (corneal plane):  
Anticipated Residual Astigmatism:

Copyright © 2004, Appasamy Associates. All rights reserved. Toric Lens Calculator Version 1.0.0

## ADVANTAGES OF APPA TORIC IOL CALCULATOR

- Manual keratometry is recommended
- Output data are displayed in a format suitable for printing
  - Reference in the operating room
  - Inclusion in the patient's chart
- Determines the optimal axis placement of the lens within the capsular bag
- Compensates for expected surgically induced astigmatism
- Allows for customization of important variables to accommodate individual surgeon preferences
- Directly impacts the amount and/or axis of post-incisional astigmatism to be corrected
- Surgeons should enter a number that represents their actual historical average of surgically-induced cylinder and then customize it
- Based on clinical data, a default value of 0.5D is provided as a starting point

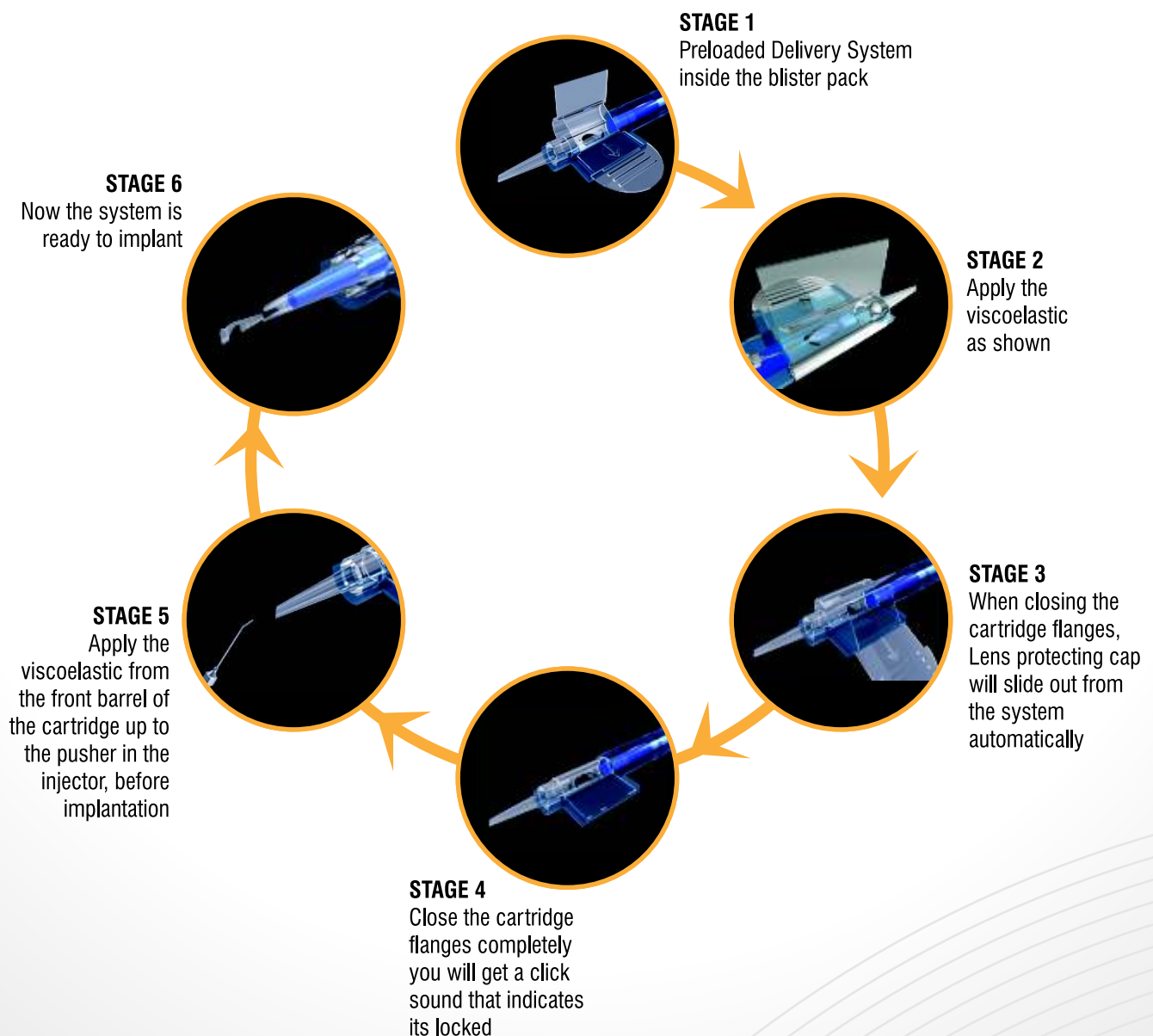
## PATIENT SELECTION

Supraphob Toric IOL can be implanted in patients who meets the below listed criteria, following of which yields exceptional results to the patients

### Suitable patients are as follows

- Cataract patients
- Pre-existing corneal astigmatism > 0.75D with the following characteristics
  - Manual keratometry: Steep and flat meridians  $\sim 90^\circ$  apart
  - Corneal topography: Symmetrical astigmatism
  - Intact capsular bag

## PRELOADED SYSTEM





## TECHNICAL SPECIFICATION

Model	SP TORIC
Overall Length	13.00 mm
Optic Diameter	6.00 mm
Haptic	Dual Haptic, 0° angulation prevents rotation after implants
Optic Design	Biconvex, Aspheric Toric on anterior surface
Diopter Range	
Spherical	10.00D to 30.00D (0.5D increment)
Cylinder	1.50D to 6.00D
Material	Hydrophobic Yellow Acrylic
Refractive Index	1.497
A constant	118.0
Delivery System	Ready to inject preloaded system
Special Features	Aspheric optics with 360° square edge

Manufactured by:



**APPASAMY OCULAR DEVICES (P) LTD**

R.S. NO. 9/1, 2&3, N.H. 45-A, Villupuram Main Road,  
Vadamanagalam, Pondicherry - 605 102, INDIA