

ALFA ROMEO JUNIOR



ALFA ROMEO JUNIOR

SHAPING EXCELLENCE

The Alfa Romeo Junior elevates your driving experience with superior driving dynamics, great agility, and lightness on the road. From its amazing performances to its cutting-edge technology, this new sporty compact car is ready to boost your everyday life.



ALFA ROMEO JUNIOR

SUMMARY



Versions

Pag 4

Colours

Pag 7

Wheels

Pag 8

Seats

Pag 9

Trim Details

Pag 10



ALFA ROMEO JUNIOR

VERSIONS



Version	Engine	Power (HP)	Power (kW)	CO ₂ emissions	List price
Junior Elettrica	Electric	156	115	-	€ xx.xx
Junior Elettrica Speciale	Electric	156	115	-	€ xx.xx
Junior Elettrica Veloce	Electric	280	207	-	€ xx.xx
Junior Ibrida	1.2 Hybrid	136	100	109	€ xx.xx
Junior Ibrida Speciale	1.2 Hybrid	136	100	109	€ xx.xx





TRIM OVERVIEW

Ibrida



Exterior

- 17" Turbina alloy wheels
- Leggenda "Scudetto" V-shield

Interior

- Icona fabric seats
- Synthetic leather steering wheel
- Paddle shifters

Technology

- 10.25" touch-screen infotainment system with 2 USB ports, Bluetooth, and voice commands
- 10.25" "Cannocchiale" customisable digital cluster
- Wireless Apple CarPlay and Android Auto™
- Electrically adjustable exterior mirrors
- Rain sensing wipers
- Rear parking sensors
- 4-speaker sound system

Ibrida Speciale



- 18" Fori alloy wheels
- Progresso "Scudetto" V-shield
- Matte black body kit with Red Brera inserts
- Dark tinted rear windows

- Spiga fabric and vinyl seats with electric adjustment and massage (driver)
- Leather steering wheel
- Paddle shifters
- Ambient lighting
- LED touch front and rear cabin lights

- 10.25" touch-screen infotainment system with navigation, 2 USB ports, Bluetooth, and voice commands
- 10.25" "Cannocchiale" customisable digital cluster
- Wireless Apple CarPlay and Android Auto™
- Electrically adjustable exterior mirrors
- Rain sensing wipers
- Rear parking sensors
- Rearview camera with dynamic gridlines
- Lane Centering
- Traffic Jam Assist
- 6-speaker sound system
- Hands-free power liftgate



COLOURS

SOLID

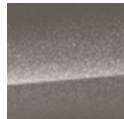


Sempione
White
€ xx.xx

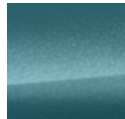


Tortona
Black
€ xx.xx

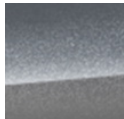
METALLIC



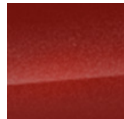
Galleria
Ivory
€ xx.xx



Navigli
Blue
€ xx.xx

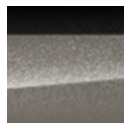


Arese
Grey
€ xx.xx



Brera
Red
€ xx.xx

BI-COLOUR



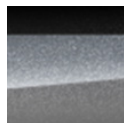
Galleria
Ivory with
Black Roof
€ xx.xx



Sempione
White with
Black Roof
€ xx.xx



Navigli
Blue with
Black Roof
€ xx.xx



Arese
Grey with
Black Roof
€ xx.xx



Brera
Red with
Black Roof
€ xx.xx



WHEELS

Inspired by the rich history of the Brand, these wheels showcase pure shapes and geometries that have always been part of the Alfa Romeo DNA.



Alloy wheels 17" Turbina

Available on JUNIOR IBRIDA

€ XX.XX



Alloy wheels 18" Petali

Available on JUNIOR ELETTRICA,
JUNIOR ELETTRICA SPECIALE,
JUNIOR IBRIDA, and JUNIOR IBRIDA SPECIALE

€ XX.XX



Alloy wheels 18" Aero

Available on JUNIOR ELETTRICA (in 2025)

€ XX.XX



Alloy wheels 18" Fori

Available on JUNIOR ELETTRICA,
JUNIOR ELETTRICA SPECIALE,
JUNIOR IBRIDA, and JUNIOR IBRIDA SPECIALE

€ XX.XX



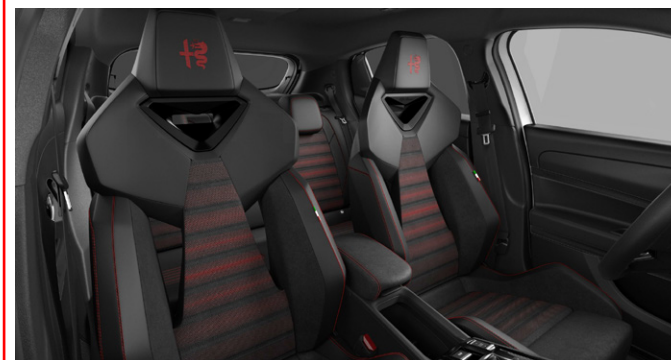
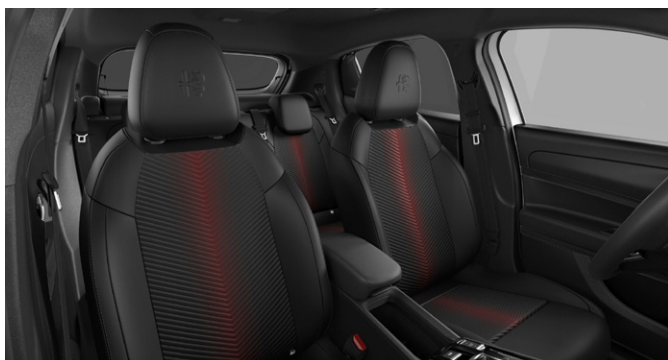
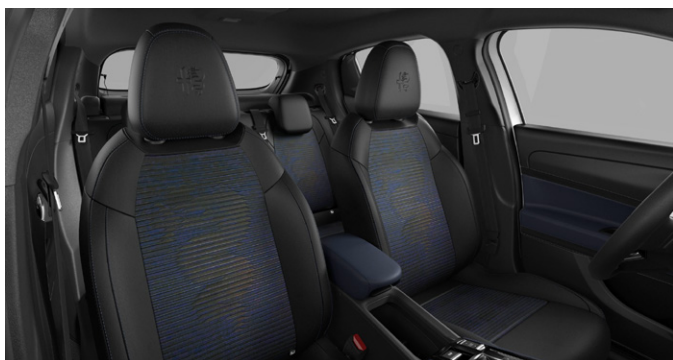
Alloy wheels 20" Venti

Available on JUNIOR ELETTRICA VELOCE

€ XX.XX

SEATS

Crafted with the driver in mind, the Alfa Romeo Junior seats perfectly integrate cutting-edge technology and ergonomic design with exclusive materials.



Icona seats

The Icona model features innovative black and blue cloth seats with a captivating camo effect, adorned with the iconic Biscione emblem. The driver's seat offers 6-way manual adjustment, while the passenger's seat has 4-way manual adjustment.

- Standard on JUNIOR ELETTRICA and JUNIOR IBRIDA.

Spiga seats

The Spiga seats boast striking black and red cloth, featuring a distinctive Scudetto design. The driver's seat is electrically adjustable and includes a massage function for added comfort, while the passenger's seat offers 6-way manual adjustment.

- Optional on JUNIOR ELETTRICA and JUNIOR IBRIDA.
- Standard on JUNIOR ELETTRICA SPECIALE, JUNIOR ELETTRICA VELOCE, and JUNIOR IBRIDA SPECIALE.

Corsa seats

Created in collaboration with Sabelt, the Corsa seats feature black and red suede, offering both support and stability. Enhanced by a sleek design and bold red stitching, they include electric adjustment for the driver and 6-way manual adjustment for the passenger.

- Optional on JUNIOR ELETTRICA SPECIALE, JUNIOR ELETTRICA VELOCE, and JUNIOR IBRIDA SPECIALE.

ALFA ROMEO JUNIOR

TRIM DETAILS



Images are for illustrative purposes only. Some features may be optional with an additional cost or temporarily unavailable.



TRIM DETAILS

Description	Ibrida	Ibrida Speciale	Price
External design			
Body Colour Exterior Door Handles	S	S	-
Side mirrors with power regulation	S	S	-
Scudetto Leggenda	S	-	-
Matt Black Body Kit with Red Brera inserts and Scudetto Progresso	-	S	-
Full-LED rear lights	S	S	-
Gloss black mirror covers	S	S	-
Full-LED Adaptive Matrix headlights	S	S	-
Dark Tinted Rear Windows	P	S	-
Internal design			
Synthetic Leather Steering Wheel	S	-	-
Leather Steering Wheel	P	S	-
60/40 Folding Rear Seats	S	S	-
Front Seatback Pockets, Driver and Passenger	S	S	-
Ambient lighting	P	S	-
Front and Rear Dome Lamp with LED touch	P	S	-
Seats			
ICONA: fabric seats with 6-way manual adjustment (driver) and 4-way manual adjustment (passenger)	S	-	-
SPIGA: vinyl and fabric seats with electric adjustment and massage (driver); 6-way manual adjustment (passenger)	P	S	-
CORSA: Alcantara and vinyl seats (ant. Sabelt) with electric adjustment (driver) and 6-way manual adjustment (passenger)	-	P	-



TRIM DETAILS

Description	Ibrida	Ibrida Speciale	Price
Audio/Telematics			
10.25" Canocchiale Digital Cluster	S	S	-
10.25" Central Display - No Navigation (with Wireless Smartphone Mirroring)	S	-	-
10.25" Central Display with Navigation and Wireless Smartphone Mirroring	P	S	-
Wireless Apple CarPlay / Android Auto™	S	S	-
4-Speaker Sound System	S	-	-
6-Speaker Sound System	P	S	-
Alfa Connect Services	S	S	-
Comfort/Functionality			
Electric Landscape Roof	O	O	€ xx.xx
Windshield heated wiper zone	O	O	€ xx.xx
Hands-Free Power Liftgate	P	S	-
Front Central Armrest	S	S	-
Automatic Climate Control	S	S	-
Rear Central Headrest	S	S	-
Front And Rear Power Windows With Auto Up/Down	S	S	-
Keyless Engine Start	S	S	-
Drive Mode Selector	S	S	-
Paddle shifters	S	S	-



TRIM DETAILS

Description	Ibrida	Ibrida Speciale	Price
Safety/Security			
Rain Sensing Wipers	S	S	-
Intelligent Adaptive Cruise Control	S	S	-
Fix & Go Predisposition	S	S	-
Rear Parking Sensors	S	S	-
Autonomous Emergency Braking (AEB) with pedestrian and cyclist recognition	S	S	-
ECALL	S	S	-
Electric Parking Brake (With Auto Hold)	S	S	-
Traffic Sign Recognition	S	S	-
Rearview Camera with Dynamic Gridlines	P	S	-
Lane Centering	P	S	-
Traffic Jam Assist	P	S	-
Wheels			
Diamond Cut 17" Turbina Alloy Wheels	S	-	-
Diamond Cut 18" Petali Alloy Wheels	O	-	€ xx.xx
Diamond Cut 18" Fori Alloy Wheels	O	S	€ xx.xx



PACKS

Description	Ibrida	Ibrida Speciale	Price
Premium Pack (Spiga) Leather Sports Steering Wheel Vinyl and fabric seats with electric adjustment and massage (driver); 6-way manual adjustment (passenger) Black Painted Body-Kit Adjustable boot floor with 3 options Dark Tinted Rear Windows Ambient Lighting Front and Rear Dome Lamp with LED touch	O	-	€ xx.xx
Sport Speciale Pack (Corsa) Alcantara Leather Sports Steering Wheel Alcantara Sabelt Seats 6-Way Front Seats	-	O	€ xx.xx
Techno Pack Internal Electrochromic Rearview Mirror Wireless charging pad Front, Rear, and Side Parking Sensors Rearview Camera With Dynamic Gridlines Adaptive Cruise Control With Lane Centering & Traffic Jam Assist Electrically Adjustable & Auto-Folding, Heated Door Mirrors With Blind Spot Detection Hands-Free Power Liftgate Passive Entry 6-Speaker Sound System 10.25" Central Display with Navigation and Wireless Smartphone Mirroring 2 USB Type C Ports - Charging 2.5A Traffic Sign Information	O	-	€ xx.xx
Techno Speciale Pack Internal Electrochromic Rearview Mirror Led Matrix Projector Headlamps Wireless charging pad Front, Rear, and Side Parking Sensors Electrically Adjustable & Auto-Folding, Heated Door Mirrors With Blind Spot Detection	-	O	€ xx.xx



TECHNICAL SPECS

Description	Ibrida	Ibrida Speciale
Size		
Length (mm)	4173	4173
Width (mm)	1981	1981
Height (mm)	1539	1539
Wheelbase (mm)	2557	2557
Width folded mirrors (mm)	1781	1781
Engine		
Maximum power (kW)	100	100
Maximum power (HP)	136	136
Motor Type	1.2 Hybrid eDCT6	1.2 Hybrid eDCT6
Drive Type	Front-wheel Drive (FWD)	Front-wheel Drive (FWD)
Transmission	Automatic double clutch	Automatic double clutch
Ecological Level	EURO 6E	EURO 6E
CO ₂ emissions (WLTP Combined Cycle) (g/km)	109	109
Fuel Efficiency (WLTP Combined Cycle) (l/100km)	4.9	4.8



TECHNICAL SPECS

Description	Ibrida	Ibrida Speciale
Technical data		
Battery Capability (kWh)	0.89	0.89
Motor Displacement (cc)	1199	1199
Fiscal Horses	14	14
Hybrid Motor Power (kW/CV)	21/28.5	21/28.5
Torque (Nm)	230	230
Acceleration 0-100 Km/h (sec)	8.9	8.9
Top Speed (Km/h)	206	206
Front Brake Size (Ø mm)	302 x 26	302 x 26
Rear Brake Size (Ø mm)	249 x 10	249 x 10
Brake Calipers	Grey	Grey
Steering	Electric power steering	Electric power steering
Steering Diameter (m)	10.5	10.5

ALFA ROMEO JUNIOR

DISCLAIMER

ELETTRICA

- Combined energy consumption of the Alfa Romeo Junior (kWh/100km): 15.0 -15.5; CO₂ emissions (g/km): 0. Electric range (km): 410 - 398 according to EU directive 1999/94. Values determined based on ongoing official tests prescribed by the approval procedure and measured according to the WLTP cycle. Preliminary values subject to confirmation during the approval process. The values indicated are for comparison purposes only.
- Energy consumption of the Alfa Romeo Junior Elettrica Veloce (kWh/100km): 17.9; CO₂ emissions (g/km): 0. Electric range (km): 334. Preliminary values measured according to the WLTP cycle during pre-approval testing activities, and could vary before final homologation. The values indicated are for comparative purposes only.
- Energy consumption and CO₂ emissions figures may vary depending on actual usage conditions and various factors, such as options, temperature, driving style, speed, vehicle weight, specific equipment (air conditioning, heating system, radio, navigation, lights, etc.), tires, road conditions, weather, etc.

IBRIDA

- Fuel consumption of the Alfa Romeo Junior Ibrida (l/100km): 4.9-4.8; CO₂ emissions (g/km): 110-109. Type approval values are determined on the basis of the WLTP cycle, homologated as of 23.07.2024. The values indicated are for comparative purposes only.
- Fuel consumption and CO₂ emissions figures may vary depending on actual usage conditions and various factors, such as options, temperature, driving style, speed, vehicle weight, specific equipment (air conditioning, heating system, radio, navigation, lights, etc.), tires, road conditions, weather, etc.

Images are for illustrative purposes only. Some features may be optional with an additional cost or temporarily unavailable.

ALFA ROMEO JUNIOR





ALFA ROMEO JUNIOR