

# WMAP EVO



## AXIAL WOLTMANN METER

WMAP Evo represents an excellent solution for large volume metering in the utility, industrial and commercial sectors. It provides good metrological performance and wide measuring range, while ensuring perfect readability over time thanks to its IP68 copper/glass register. Robust, long lasting and suitable for the most challenging environments, it is compatible with all types of water. It can be equipped with the latest remote data transmission technologies.

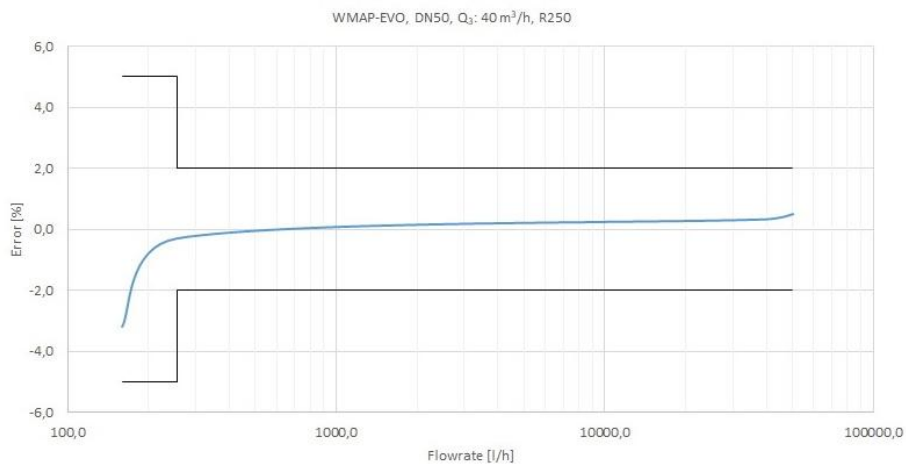
# WMAP EVO

## FEATURES

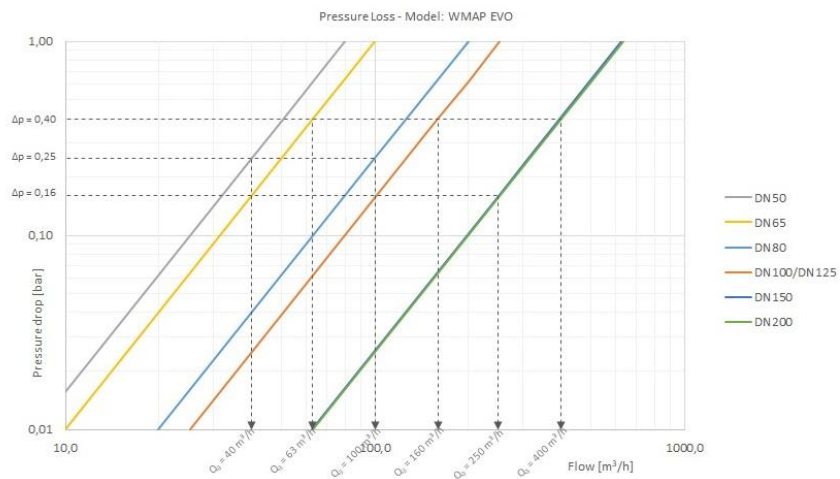
- Interchangeable mechanism axial Woltmann meter for cold water
- Ideal for large volumes for utilities and industrial use
- MID-certified: R max 250
- DN: 50÷200
- Health certifications available for a number of countries
- High protection against external magnetic fields
- Mineral glass lens
- Sealed register (IP68 copper/glass) to prevent condensation
- The register can be rotated
- Can be provided fitted with wired or radio communication module
- Pre-equipped for reed switch (DN 50÷100mm 1P=100L / DN 125÷200mm 1P=1000L) or static pulse emitter (DN 50÷100mm 1P=10L / DN 125÷200mm 1P=100L)



## TYPICAL ERROR CURVE



## HEAD LOSS DIAGRAM



## METROLOGICAL PERFORMANCE

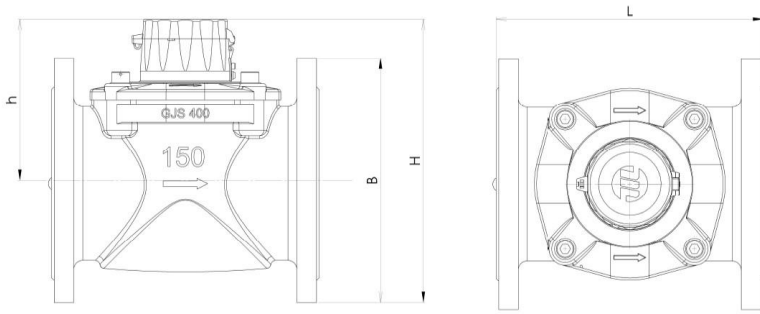
Size	mm	50	65	80	100	125	150	200
	in	2	2 ½	3	4	5	6	8
Module B no.		TCM 142/17-5473						
Module D no.		0119-SJ-A010-08						
Q <sub>3</sub> /Q <sub>1</sub> = R Referred to installation position		H↑ ≤ 250 H→; V↑; V↓ ≤ 160				H↑; V↑ ≤ 250 H→; V↓ ≤ 125		
MID standard performance *								
Q <sub>3</sub>	m <sup>3</sup> /h	40	63	100	160	250	400	
Q <sub>4</sub>	m <sup>3</sup> /h	50	78,75	125	200	312,50	500	
R		100						
Q <sub>1</sub>	l/h	400	630	1000	1600	2500	4000	
Q <sub>2</sub>	l/h	640	1008	1600	2560	4000	6400	

\* Other values of R available upon request.

## TECHNICAL DATA

Maximum permissible error between Q <sub>1</sub> and Q <sub>2</sub> (excluded)		+/- 5%						
Maximum permissible error between Q <sub>2</sub> (included) and Q <sub>4</sub>		+/- 2% with water temperature ≤ 30°C +/- 3% with water temperature > 30°C						
Temperature class		T50						
Flow profile sensitivity classes		U0 - D0						
Starting flow rate	l/h	125	190	320	450	700	1200	1800
Head loss		ΔP25	ΔP40	ΔP25	ΔP40	ΔP16	ΔP40	
Nominal pressure		bar 10/16						
Maximum reading	m <sup>3</sup>	9.999.999				99.999.999		
Minimum reading	l	0,5				2	5	
Indicative weight	kg	10	11,2	15,2	17,2	22,4	29	42,6

## DIMENSIONS



<b>Size</b>	<b>mm</b>	50	65	80	100	125	150	200
	<b>in</b>	2	2 ½	3	4	5	6	8
<b>L</b>	<b>mm</b>	200/270	200	200/225/300	250/360	250	300	350
<b>H</b>	<b>mm</b>	209	218	249	258	271	316	345
<b>h</b>	<b>mm</b>	132		154			183	
<b>B</b>	<b>mm</b>	165	185	200	220	250	280	340

## COMMUNICATION MODULES



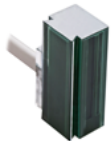
ARROW<sup>EVO</sup> 868



FLOWPULSE



FLOWPULSE M-BUS



REED SWITCH WOLTMANN

For more information on all the accessories available, consult the specific technical data sheets on the website [www.maddalena.it](http://www.maddalena.it)