

EMR

# ClearGrasp Snare



Cold  
(0.2mm 1x7)



Soft  
(0.3mm 1x7)



Stiff  
(0.4mm 1x7)



Moderato  
(0.4mm 3x3)



Oval 1 Type

Crab Type

Crescent Type

Cold & Hot Snare

## FEATURE & BENEFITS

### (1) Built-in saline Irrigation port

- This product has the saline irrigation port. Using it, the users do not need to exchange accessories to flush the saline or water to detect the bleeding site.

### (2) Looping rotation with the handle at 1:1 ratio

- The loop of this product can be rotated at 1:1 ratio with the handle, and the users can perform the EMR procedures more easily.

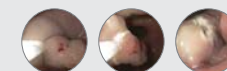
### (3) Various shapes and sizes of loop (6mm-30mm)

- The users can select the shape and diameter of loop according to their needs.
- Cold Snare Polypectomy can be performed by using our small size snare (6-10mm)

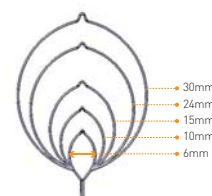
### (4) Cold & Hot Snare



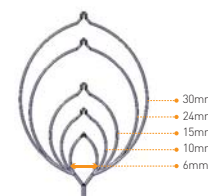
- Shield shape enables effective cold snare Polypectomy.
- Covering both Hot and Cold Snare Polypectomy.
- 6mm loop size facilitates the resection of diminutive polyps (size ≤5mm)
- Irrigation Port helps control bleeding during polypectomy.



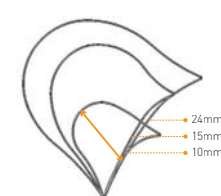
## OVAL 1 TYPE



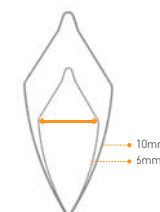
## CRAB TYPE



## CRESCENT TYPE



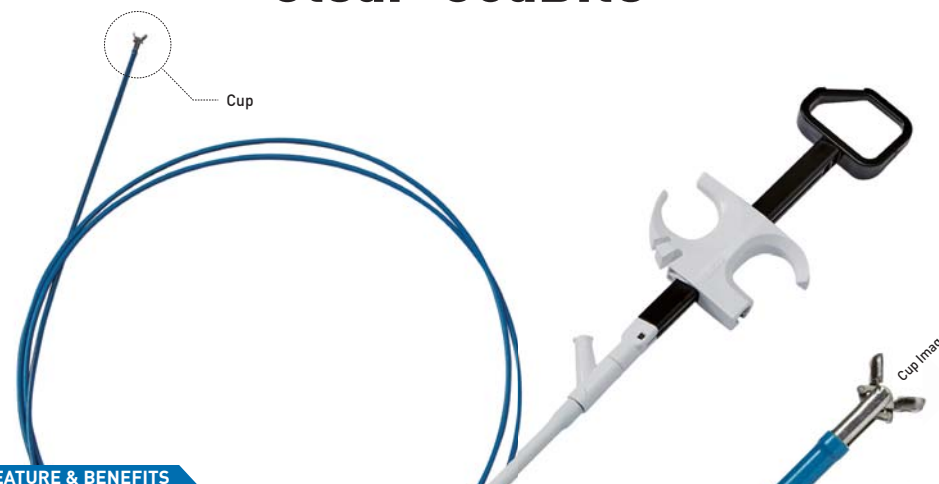
## COLD TYPE



## SPECIFICATION

Type	Model	Type of Retation	Loop Size	Loop Stiffness	Sheath O.D	Working Length	Number of Use	Validity of Sterilization	
Oval1	FM-ESN006(2400)(Soft)	Non-Rotation	6mm	Soft	ø2.4mm	2,400mm	Single Use Only	3 years	
	FM-ESN006(2400)(Stiff)			Stiff					
	FM-ESN006(2400)(Moderato)	Rotation		Moderato					
	FM-ES0006(2400)(Soft)			Soft					
	FM-ES0006(2400)(Stiff)	Non-Rotation		Stiff					
	FM-ES0006(2400)(Moderato)			Moderato					
	FM-ESN004(2400)(Soft)	Rotation	10mm	Soft					
	FM-ESN004(2400)(Stiff)			Stiff					
	FM-ESN004(2400)(Moderato)	Non-Rotation		Moderato					
	FM-ES0004(2400)(Soft)			Soft					
	FM-ES0004(2400)(Stiff)	Rotation		Stiff					
	FM-ES0004(2400)(Moderato)			Moderato					
	FM-ESN005(2400)(Soft)	Non-Rotation	15mm	Soft					
	FM-ESN005(2400)(Stiff)			Stiff					
	FM-ESN005(2400)(Moderato)	Rotation		Moderato					
	FM-ES0005(2400)(Soft)			Soft					
Crab	FM-ES0005(2400)(Stiff)	Non-Rotation	24mm	Stiff					
	FM-ES0005(2400)(Moderato)			Moderato					
	FM-ESN002(2400)(Soft)	Rotation		Soft					
	FM-ESN002(2400)(Stiff)			Stiff					
	FM-ESN002(2400)(Moderato)	Non-Rotation	30mm	Moderato					
	FM-ES0002(2400)(Soft)			Soft					
	FM-ES0002(2400)(Stiff)	Rotation		Stiff					
	FM-ES0002(2400)(Moderato)			Moderato					
	FM-ESN003(2400)(Soft)	Non-Rotation	30mm	Soft					
	FM-ESN003(2400)(Stiff)			Stiff					
FM-ESN003(2400)(Moderato)	Rotation			Moderato					
FM-ES0003(2400)(Soft)				Soft					
FM-ES0003(2400)(Stiff)	Non-Rotation			Stiff					
FM-ES0003(2400)(Moderato)				Moderato					
Crab	FM-ESN006(Crab)(2400)(Stiff)	Non-Rotation	6mm	Stiff					
	FM-ES0006(Crab)(2400)(Stiff)	Rotation	10mm						
	FM-ESN004(Crab)(2400)(Stiff)	Non-Rotation							
	FM-ES0004(Crab)(2400)(Stiff)	Rotation	15mm						
	FM-ESN005(Crab)(2400)(Stiff)	Non-Rotation							
	FM-ES0005(Crab)(2400)(Stiff)	Rotation	24mm						
	FM-ESN002(Crab)(2400)(Stiff)	Non-Rotation							
	FM-ES0002(Crab)(2400)(Stiff)	Rotation	30mm						
FM-ESN003(Crab)(2400)(Stiff)	Non-Rotation								
FM-ES0003(Crab)(2400)(Stiff)	Rotation								
Crescent	FM-ES0004(Crecent)(2400)	Non-Rotation	10mm	Soft					
	FM-ES0004(Crecent)(2400)		15mm	Stiff					
	FM-ES0005(Crecent)(2400)			Soft					
	FM-ES0005(Crecent)(2400)		24mm	Stiff					
	FM-ES0002(Crecent)(2400)			Soft					
Cold	FM-ES0002(Crecent)(2400)			Stiff					
	FM-ESN006(Cold)(2400)	Non-Rotation	6mm	Soft (0.2mm)					
	FM-ES0006(Cold)(2400)	Rotation							
	FM-ESN004(Cold)(2400)	Non-Rotation							10mm
	FM-ES0004(Cold)(2400)	Rotation							

## Clear-CoaBite



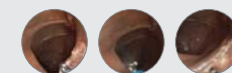
### FEATURE & BENEFITS

#### (1) Built-in Saline Irrigation Port

- This product has the saline Irrigation port, This could let the users don't need to change snare to flush saline or water for detecting bleeding site.

#### (2) Improving usability

- By shortening the conductive length at the distal end of sheath from 9mm to 4mm, operators do not need to focus out in order to take the angle again.



## SPECIFICATION

Specification									
Model	Shape of Cup	Cup(Jaw)O.D	Sheath O.D	Working Length	Compatible Endoscopes		Number of Use	Validity of Sterilization	
					Length	Channel Inner Diameter			
FM-EB0001	Oval	ø1.72mm	ø2.3mm	1,600mm	Max. 1,100mm	Min. ø2.8mm	Single Use Only	3 years	
FM-EB0002				2,400mm	Max. 1,800mm				
FM-EB0003		ø2.3mm		1,600mm	Max. 1,100mm				
FM-EB0004				2,400mm	Max. 1,800mm				