



# SZ160.3

Name: **Pole fuse switch disconnector**

Al/Cu 2x(16-120) mm<sup>2</sup>, poles 3

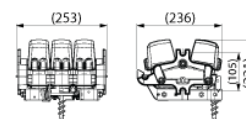
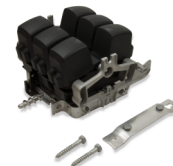
Type: SZ160.3

GTIN: 6438100318314

Description: These pole fuse switches include separate terminal covers for in-coming and out-going conductors, thus making installation safer. Connectors included 6 x KG45.5, poles 3.

Package: 1/48

Unit: PCS



## Technical specification

### Electrical values

Fuse	160 A
Nominal insulation voltage	1000 V
Nominal voltage (Un)	415 V
Rated values	160 A, 415 V

### Short-circuit characteristics

Rated conditional short-circuit current 50 kA

### Ratings

Degree of protection	IP23
ETIM class	EC001040

### Dimensions

Weight	3.7 kg
Conductor size Al	16 ... 120 mm <sup>2</sup>
Conductor size Cu	16 ... 120 mm <sup>2</sup>

### Features

Connectors included	6 x KG45.5
Fuse contact	NH00
Number of poles	3
Utilization category	AC22B

### Certificates

Standards IEC 60947-3

### ETIM

Max. rated operation voltage Ue AC	415 V
Rated permanent current Iu	160 A
Conditioned rated short-circuit current Iq	50 kA
Suitable for fuses	NH00
Number of poles	3



*Saves Your Energy*

## PRODUCT CARD

28.6.2017

2/2

# SZ160.3

Type of electrical connection of main circuit	Cable clamp
Type of control element	Long turning handle

Ensto Finland Oy

Ensio Miettisen katu 2  
P.O.Box 77  
06101 Porvoo, Finland

Tel. +358 204 76 21  
Fax +358 204 76 2770

[www.ensto.com](http://www.ensto.com)