



Total Body Dermoscopy

Follow-up of patients with multiple lesions

The **Total Body Dermoscopy** workflow takes Total Body Mapping to a completely new, unprecedented level of quality! As more than 70% of all melanomas develop “de novo”, the **ATBM master** helps you to visualize atypical, changed and new lesions quickly and accurately.

The unique **Mosaic View** filters the lesions from ALL polarized total body images¹ and arranges them all on ONE screen: with such spectacular image quality that you will think you are looking at dermoscopic images!

The video dermatoscope **medicam 1000s** allows a visual journey into the skin structures magnified up to 400x.

ATBM
master



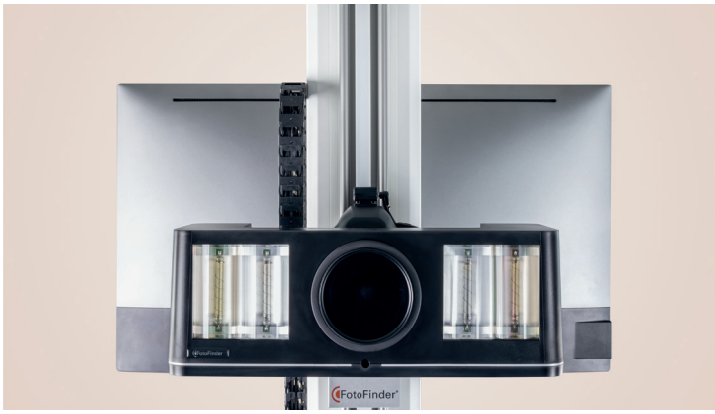
Time-saving workflow

The **ATBM master** enables standardized and brilliant documentation of the skin surface with the fastest image acquisition process we have ever developed.

The Total Body Dermoscopy workflow reduces the examination time for patients with multiple lesions to a minimum: because the high-resolution total body status² and the software support while finding changes will significantly reduce the need for dermoscopy.

¹ The Bodyscan and Mosaic View functions do not replace the complete examination of the patient by a doctor.

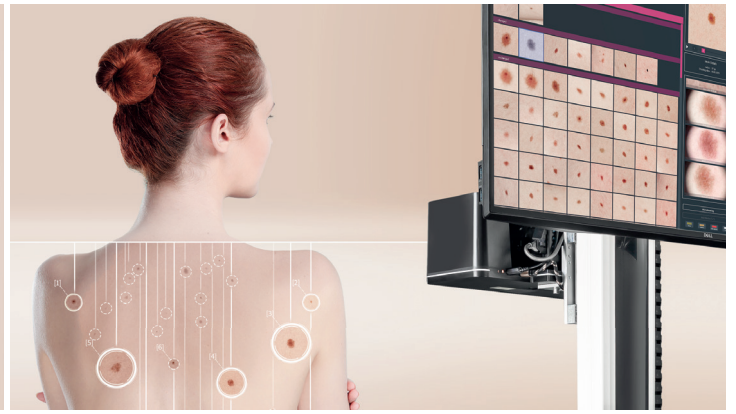
² Total Body Mapping photographically covers up to 85% of the skin surface, depending on the patient's posture, clothing, body hair and body shape. Total Body Mapping does not replace a complete examination by the physician.



PolFlash XE

Super-high resolution clinical images

The **ATBM master** captures super-high resolution, polarized photos in RAW image format for highest image quality. The proprietary computer-controlled xenon flash **PolFlash XE** enables both cross-polarized, reflection-free medical images as well as aesthetic treatment documentation with studio lighting. The image processing and storage technology has been specially optimized for skin surface images: Zoom in on total body images and evaluate the structure of skin lesions immediately. Use the integrated **medicam 1000s** video dermatoscope for lesions requiring further microscopic examination.



Skin check

Powered by Artificial Intelligence (AI)

ATBM master uses unique FotoFinder algorithms to localize all detected lesions from the total body photos and to intelligently organize and visualize them in the Mosaic View on a single screen sorted by size. In dermoscopy, the **Moleanalyzer pro** supports you in the pre-assessment of melanocytic and non-melanocytic skin lesions with one of the most powerful deep learning algorithms evaluated in clinical trials up to now³. Overall, the combination of Total Body Dermoscopy and Artificial Intelligence will lead to improved examination accuracy.

³ "Man against machine" and "Man against machine reloaded", Heidelberg University

ATBM master

The future is Total Body Dermoscopy

Bodyscan master with Mosaic View

Visualizes all detected lesions of a patient as icons on one screen, sorted by body localization or change category.

Super high-resolution images with PolFlash XE

High-resolution camera system with xenon flash. RAW-processed total body images, cross-polarized and non-polarized.

Intelligent, multifunctional platform with new design

Versatile in its use, with optional modules for trichoscopy, aesthetics and psoriasis assessment with the unique **PASIScan**.

Truly mobile ATBM tower with automatic camera lift

Turnkey installed **ATBM** tower with automatic camera lift for even faster mappings, combined with durable FotoFinder high-performance quality hardware. Suitable for single or multi-user installations.

Powerful Q-Processor

The heart of the **ATBM master**, the Q-Processor powers all features to ensure optimal performance.



Made in Germany

Artificial Intelligence

Moleanalyzer pro with AI Scoring for the pre-assessment of skin lesions.

New Total Body Dermoscopy workflow

Supports fast and precise follow-up of skin lesions and significantly reduces examination time.

True video dermoscopy with medicam 1000s

Seamlessly integrated Full HD video camera with CrystalView technology and optical live zoom.

Optional: Module for aesthetics incl. Guided Photography

Automated, reproducible image capture process for the documentation of face and body treatments with computer controlled variable optical zoom. With features for consultation, treatment planning and skin evaluation.