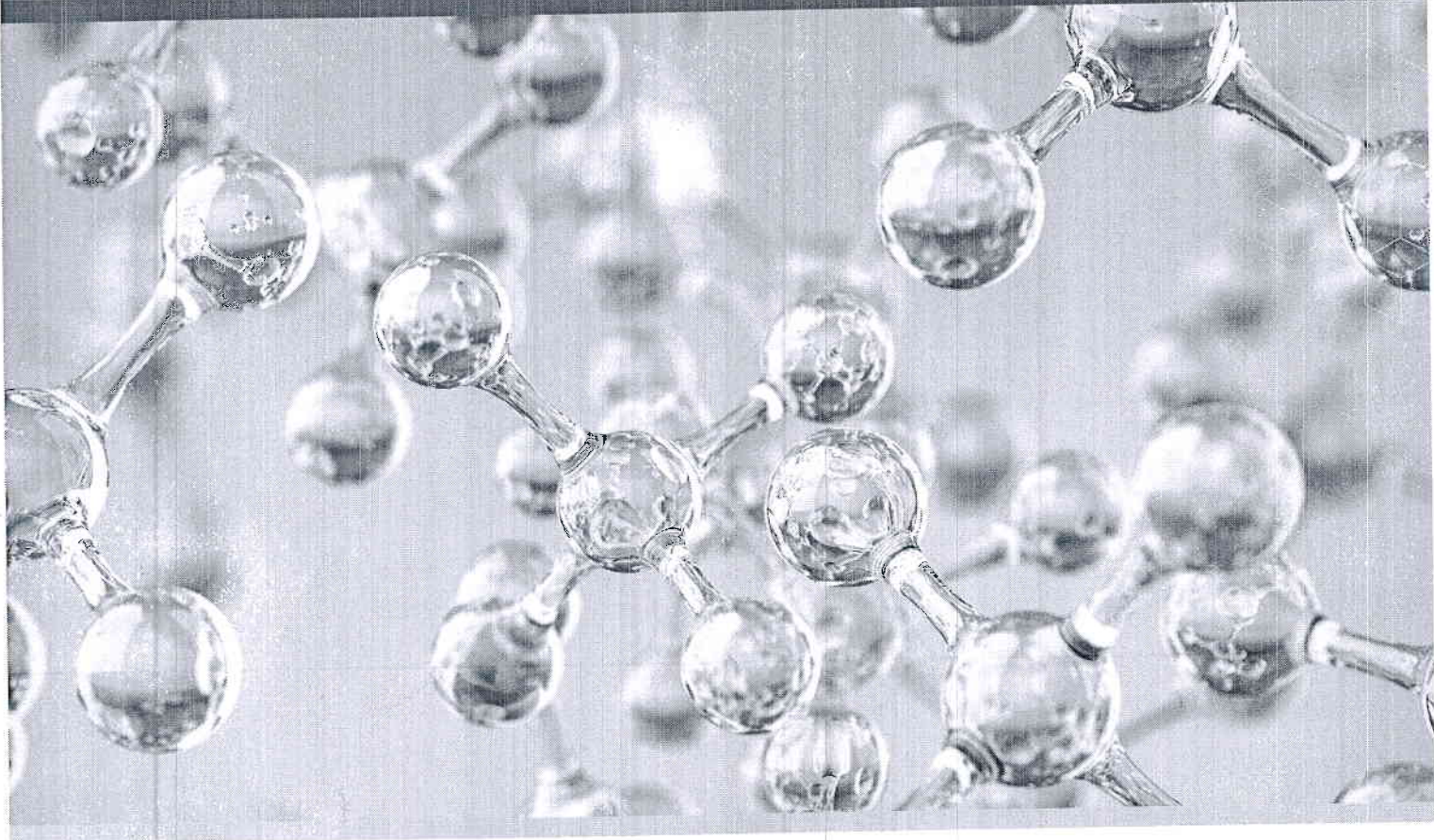
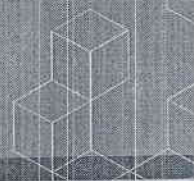


ARCHITECT



**ARCHITECT**

*ci* SERIES

Access Our Core Lab Menu.  
Enable Your Laboratory Services.



CHOOSE TRANSFORMATION™

Achieve measurably better healthcare performance  
[ABBOTTDIAGNOSTICS.com](http://ABBOTTDIAGNOSTICS.com)





## THE EXTENSIVE MENU FOR CLINICAL CHEMISTRY AND IMMUNOASSAYS ON ARCHITECT SYSTEMS

### CLINICAL CHEMISTRY

#### GENERAL CHEMISTRIES

Acid Phosphatase  
 Albumin BCG  
 Albumin BCP  
 Alkaline Phosphatase  
 ALT  
 ALT (activated)  
 Amylase  
 Amylase (pancreatic)  
 AST  
 AST (activated)  
 Bilirubin, Direct  
 Bilirubin, Total  
 Calcium  
 Cholesterol  
 CK  
 CO<sub>2</sub>  
 Creatinine  
 Enzymatic Creatinine  
 Direct LDL  
 GGT  
 Glucose  
 HDL, Ultra  
 ICT Cl<sup>-</sup> (Chloride)  
 ICT K<sup>+</sup> (Potassium)  
 ICT Na<sup>+</sup> (Sodium)  
 Iron  
 LDH (Lactate Dehydrogenase)  
 Lactic Acid  
 Lipase  
 Magnesium (Arsenazo)  
 Magnesium (Enzymatic)  
 Phosphorous  
 Total Protein  
 Triglyceride  
 UIBC  
 Urea Nitrogen  
 Uric Acid  
 Urine/CSF Protein

#### CARDIAC

CK-MB  
 Myoglobin

#### SPECIAL CHEMISTRIES

Ammonia  
 Bile Acids  
 Cholinesterase  
 Cholinesterase/Dibucaine  
 Copper  
 Cystatin C  
 D-Dimer  
 Fructosamine  
 HbA1c  
 HBDH

#### SPECIFIC PROTEINS

Alpha-1 Antitrypsin  
 Alpha-1 Glycoprotein  
 Apolipoprotein A1  
 Apolipoprotein B  
 ASO  
 Beta 2-Microglobulin  
 Ceruloplasmin  
 Complement C3  
 Complement C4  
 CRP Vario (High Sensitivity, Standard, Wide Range)  
 Ferritin  
 Haptoglobin  
 IgA  
 IgE  
 IgG  
 IgM  
 Lp(a)  
 Microalbumin  
 Prealbumin  
 RF  
 Transferrin  
 κ Light Chains  
 λ Light Chains

#### THERAPEUTIC DRUGS

Amikacin  
 Carbamazepine  
 Digitoxin  
 Digoxin  
 Gentamicin  
 Lithium  
 Phenobarbital  
 Phenytoin  
 Quinidine  
 Theophylline  
 Tobramycin  
 Valproic Acid  
 Vancomycin

#### DRUGS OF ABUSE/ TOXICOLOGY

Acetaminophen  
 Amphetamine/  
 Methamphetamine  
 Barbiturates  
 Benzodiazepines  
 Benzodiazepines Serum  
 Cannabinoids  
 Cocaine  
 Ecstasy  
 Ethanol  
 Methadone  
 Opiates  
 Phencyclidine (PCP)  
 Propoxyphene  
 Salicylate  
 Tricyclic Antidepressants



## IMMUNOASSAY

### CANCER

AFP  
CA 125 II  
CA 15-3  
CA 19-9 (CA 19-9 XR)  
CEA  
CYFRA 21-1  
HE-4  
Pepsinogen I  
Pepsinogen II  
PIVKA-II  
ProGRP  
PSA, Free  
PSA, Total  
ROMA (HE4/CA125)  
SCC

### CARDIAC

BNP  
CK-MB  
Galectin-3  
Homocysteine  
Myoglobin  
Troponin-I (high sensitive)

### FERTILITY/PREGNANCY

DHEA-S  
Estradiol  
FSH  
hCG (total beta-hCG)  
LH  
Progesterone  
Prolactin  
SHBG  
Testosterone 2nd Generation

### INFLAMMATORY DISORDERS

PCT (BRAHMS)

### HEPATITIS

Anti-HAV IgG  
Anti-HAV IgM  
Anti-HBc  
Anti-HBc IgM  
Anti-HBe  
HBeAg Qualitative/ Quantitative  
Anti-HBs  
HBsAg Qualitative  
HBsAg Qualitative Confirmatory  
HBsAg Quantitative  
Anti-HCV  
HCVAg

### RETROVIRUS

HIV Ag/Ab Combo  
Anti-HTLV I/II

### CONGENITALS

CMV IgG  
CMV IgG Avidity  
CMV IgM  
Rubella IgG  
Rubella IgM  
Toxo IgG  
Toxo IgG Avidity  
Toxo IgM

### OTHER INFECTIOUS DISEASE

Chagas  
EBV EBNA-1 IgG  
EBV VCA IgG  
EBV VCA IgM  
Syphilis TP

### METABOLIC

Active-B12  
Anti-CCP  
B12  
C-Peptide  
Cortisol  
Ferritin  
Folate  
HbA1c  
Insulin  
Intact PTH  
Vitamin D

### RENAL

NGAL

### THERAPEUTIC DRUG MONITORING

Carbamazepine  
Digoxin  
Gentamicin  
Methotrexate  
Phenobarbital  
Phenytoin  
Theophylline  
Valproic Acid  
Vancomycin

### THYROID

Anti-Tg  
Anti-TPO  
Free T3  
Free T4  
Total T3  
Total T4  
TSH  
T-Uptake

### TRANSPLANT

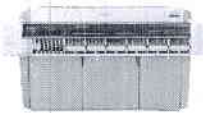
Cyclosporine  
Sirolimus  
Tacrolimus



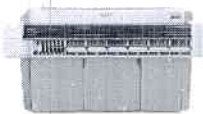
# ARCHITECT SYSTEM FAMILY

CONSISTENT USER EXPERIENCE

## CLINICAL CHEMISTRY



c16000



c8000



c4000

## IMMUNOASSAY



i4000SR

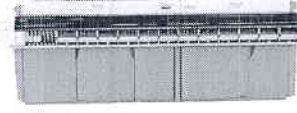


i2000SR

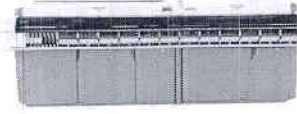


i1000SR

## INTEGRATION



ci16200



ci8200



ci4100

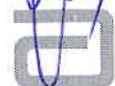
INCREASING VOLUME

ABBOTTDIAGNOSTICS.COM

ARCHITECT, c4000, ci4100, c8000, ci8200, c16000, ci16200, i1000SR, i2000SR, i4000SR and CHOOSE TRANSFORMATION are trademarks of Abbott Laboratories in various jurisdictions.

All ARCHITECT instruments are Class I laser products.

© 2017 Abbott Laboratories. ADD-00058928



**Abbott**



# ARCHITECT



# ARCHITECT c8000

The quality you need, the reliability you expect

## INTEGRATION WITHOUT COMPROMISE



- **High-speed integration** of clinical chemistry and immunoassay with the *ci8200*
- **Robotic Sample Handler (RSH)** allows the lab to prioritize tests
- **SmartWash technology** effectively controls sample-to-sample carryover (<0.1 ppm tube-to-tube)
- **Effectively** handles complex workloads on a single platform

## ENHANCED SYSTEM AND ASSAY DYNAMICS



- **FlexRate** extends the linear ranges of enzyme assays for better first-time results and fewer reruns
- **Integrated Chip Technology (ICT) module** for electrolytes is small, long-lasting and easy to maintain (60,000 determinations)
- **Maximum throughput** of up to 1,200 tests per hour
- **Large load-up capacity** of 215 samples (including 35 priority positions) and up to 121 refrigerated reagent positions, plus patented ISE ( $\text{Na}^+$ ,  $\text{K}^+$  and  $\text{Cl}^-$ )
- **Pressure differential technology** enables detection of clots, bubbles and foam, and insufficient sample volume to reduce analytical error

## TRUE FAMILY COMMONALITY



- **Identical technology**, reagents and assay protocols
- **Identical software** that is intuitive to operate
- **Universal ARCHITECT** sample carrier
- **Simple and consistent** user experience

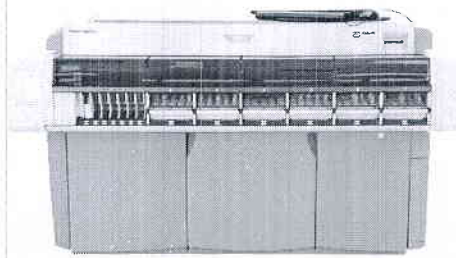


 **Abbott**

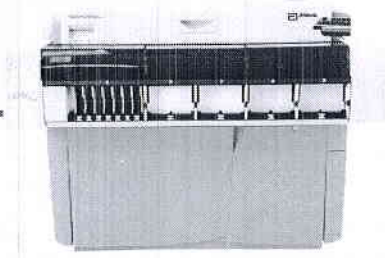
# ARCHITECT



**ARCHITECT c8000 integrated with the ARCHITECT i2000<sub>SR</sub> consolidates clinical chemistry and immunoassay testing on a single platform.**



ARCHITECT c8000



ARCHITECT i2000<sub>SR</sub>

## ARCHITECT Integration Achieves Testing Consolidation

- Excellent STAT turnaround time
- Ease of use
- Improved workflow
- Confidence in results
- Reduced costs



ARCHITECT ci8200



**CHOOSE TRANSFORMATION™**

Achieve measurably better healthcare performance.

[ABBOTTDIAGNOSTICS.com](http://ABBOTTDIAGNOSTICS.com)

ARCHITECT, c8000, i2000<sub>SR</sub>, ci8200, FlexRate, SmartWash and CHOOSE TRANSFORMATION are trademarks of Abbott Laboratories in various jurisdictions.

All ARCHITECT analyzers are Class 1 laser products.

© 2017 Abbott Laboratories. ADD-00060987

 **Abbott**