

Accessories for operating tables















Content

00	Operating Tables	01-06	01	General Accessories	07-10
02	Head Accessories	11-12	03	Arm Accessories	13-14
04	Leg Accessories	15-18	05	Back Accessories	19-20
06	Accessories for Gynecology&Urology	21-22	07	Orthopedic Accessories	23-26
08	Neurosurgery Accessories	27-28	09	Accessories for Controlling and Easier Application	29
10	Comfort Solution Accessories	30-34	11	Recommended Accessories	35-42

Symbols

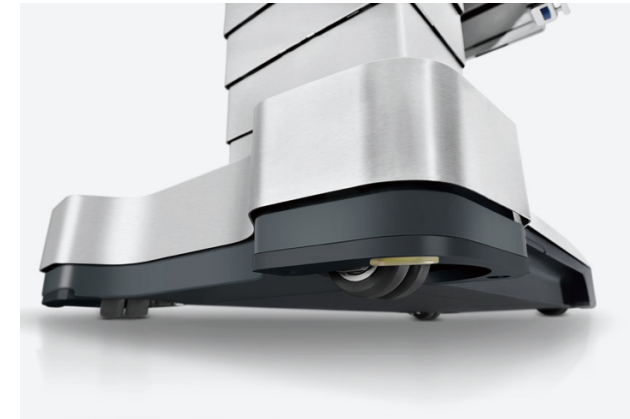
-  Material of pad: PUR
-  Material of pad: Special Foam Core
-  Rail side: EU version
-  Mounted to head support adapter
-  Side rail: US version
-  Material: carbon fiber
-  Multi-layer Decompression Technology
-  Max. patient weight
-  Max.load
-  Integrated clamp

Due to manufacturing and measuring tolerances, all data relating to table accessories have a tolerance. Please refer to the manual for final data.

HyBase V8

Electro-Hydraulic Operating Table

HyBase V8 comes with an extreme weight capacity of up to 460 kg, delivering the highest safety and stability in any position.



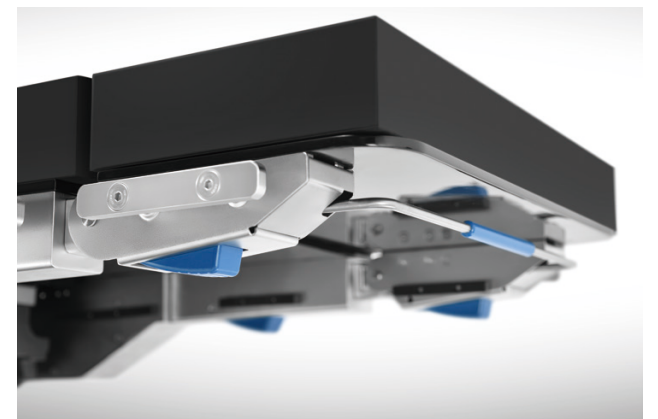
4 Swivel Castors



Intelligent Collision Protection System



E-drive Function



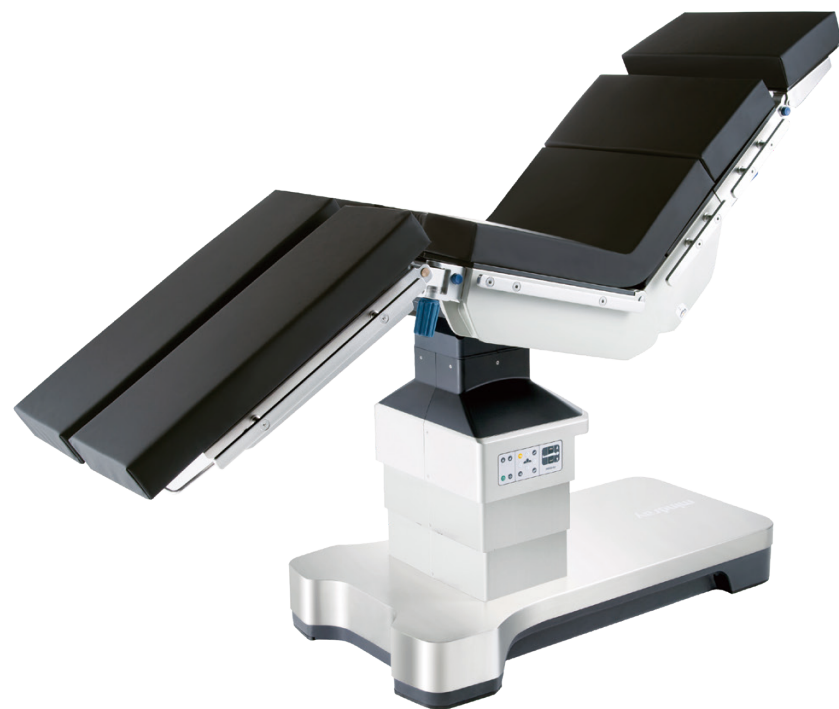
One-button design

- An extreme load capacity of up to 460 kg
- All positions are permitted up to overall load of 250 kg
- The longitudinal shift up to 350 mm, free access to C-arm
- 595 mm lowest table position for neurosurgery, 1,095 mm highest table position for orthopedics
- Intelligent Collision Protection System to stop the table movement when collision occurs
- 18 electric movements, such as powered body elevator, powered leg plates and E-drive function, adapting to various surgical needs
- Bluetooth hand control for unobstructed control in operating rooms
- Triple-layer decompression pad to redistribute the patient's weight

HyBase V8 Classic

Electro-Hydraulic Operating Table

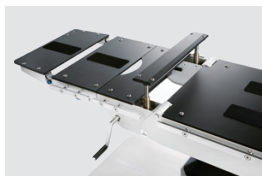
HyBase V8 Classic, the sequel of HyBase V family, is a new competitive model of Mindray operating family. It not only inherits the highlights of HyBase V family, but also conveys new function which is able to upgrade the safety in OR. As surgical procedures become increasingly complex, the expanding HyBase V series family with different models has been specifically designed to address various customer needs.



Wireless Bluetooth Remote Control



Independent Manual Override System



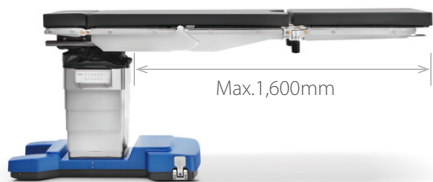
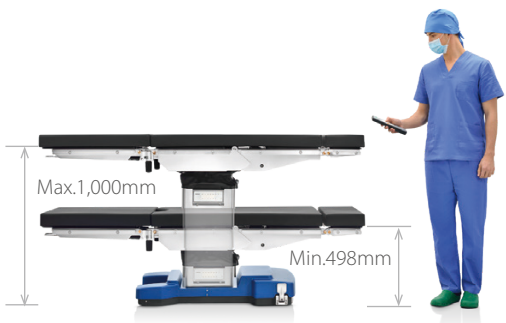
Built-in Body Elevator

- An extreme load capacity of up to 460 kg
- All positions are permitted up to overall load of 250 kg
- The longitudinal shift up to 350 mm for free to access to C-arm
- 600mm lowest table position for neurosurgery, while 1,050 mm highest table position for orthopedics
- 12 electric movements, such as table top up/down, slope and tilt, adapting to various surgical needs
- Bluetooth hand control for unobstructed control in operating rooms
- Independent manual override system for dual safety
- Triple-layer decompression pad to redistribute the patient's weight

HyBase 6100

Electro-Hydraulic Operating Table

Providing a better clinical use's scenario, HyBase 6100 is designed with a much lower table height of 498 mm specially for neurosurgery and minimally invasive surgery, a more user-friendly base cover, as well as a more convenient wireless remote control system.

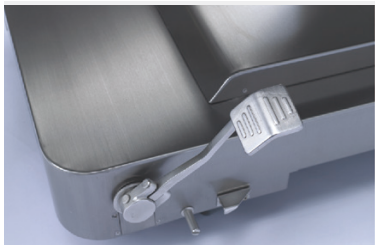


- Longitudinal slide up to 320 mm for free access to C-arm
- Maximum overall load up to 360 kg in normal position
- Multi-layer decompression pad with waterproof and seamless design
- 498 mm lowest table position for Neurosurgery and Minimally Invasive Surgery
- Wireless remote control system
- Foot Pump Manual Override System

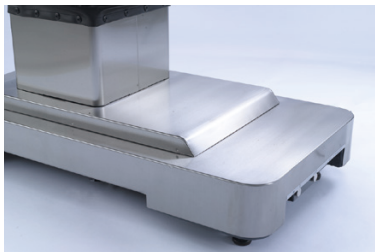
HyBase 3000

Electro-Hydraulic Operating Table

Proper annotation of "cost-effective". With the acceptable price, gaining the multifunctional electro-hydraulic table.



Foot break provides maximum safety and easy use.



Battery power can support 50-80 operations.
Backup control keys in case of hand control failure.
Optional stainless steel cover.

UniBase 30

Electro-Hydraulic Operating Table

During the surgery, a good operating table is the cornerstone of success.Engineered for increasingly complex surgical scenes, UniBase 30 needs least effort and time to position the patient in a safe, comfortable and efficient way, providing an economic solution without straining on your hospital’s budget.



Versatile & Ergonomic Design



Detachable Head Plate



Adjustable Body Elevator(optional)



Pedal Floor Lock

- Longitudinal slide up to 300 mm for free access to C-arm
- Max. overall load up to 230 kg in normal position
- Mechanical brake system for optimum stability
- Return to original position with one button
- Flex & Reflex position with one button
- Radiolucent table plate for free C-arm access
- Three control panels including remote panel, backup control & foot switch

- Weight capacity of 185 Kg in normal position
- Longitudinal shift with 300 mm
- Adjustment body elevator with 120 mm
- Battery power for about one week time
- Mechanical brake system for optimum stability
- Detachable & split leg plate for lithotomy position

General Accessories

A34XX Easy-clip clamp

115-093676-00



- To attach to the side rail for connecting accessories with the table
- For attaching rods with a diameter of 16–18mm and 1"x1/4"(25mm×6mm) accessories
- Simultaneous accessories, side rail fixation and radial adjustment

EU

A35XX Multi-function clamp

115-093677-00



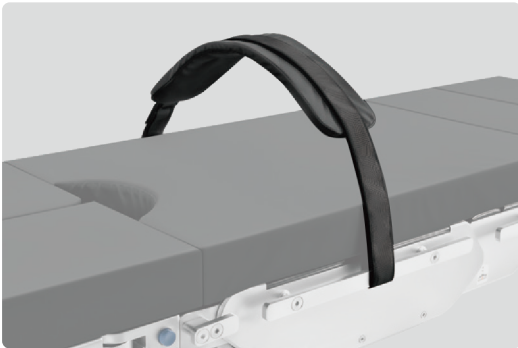
- To attach to the side rail for connecting accessories with the table.
- For attaching rods with a diameter of 16–18mm and 1"x1/4"(25mm×6mm) accessories
- Simultaneous accessories fixation and radial adjustment

EU

US

A13XX Body strap

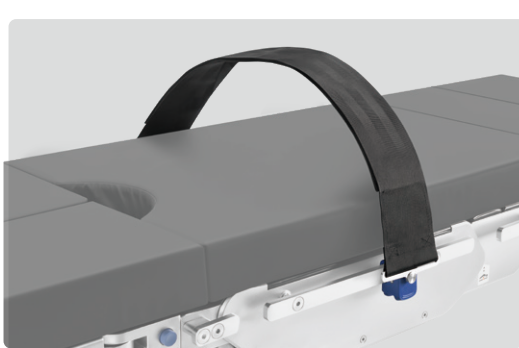
0092-30-102640



- To fasten the body of the patient to the table during the surgery
- Total length: 2000mm
- Contains only one strap

A95XX Advanced body strap

115-093658-00



- To fasten the body of the patient to the table during the surgery
- Total length of single strap: 800mm
- The strap is detachable
- Can be swivelled with its strap holder

EU

EU

A33XX Simple clamp

115-093675-00



- To attach to the side rail for connecting accessories with the table
- For attaching rods with a diameter of 16–18mm and 1"x1/4"(25mm×6mm) accessories
- Simultaneous fixation of accessories and the side rail

EU

A12XX Anesthesia frame

0092-30-102645

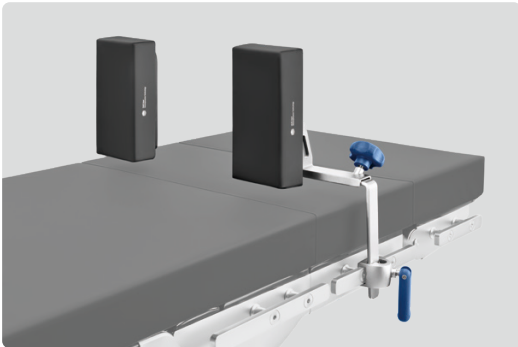


- To hang the anesthesia screen during the surgery
- Width x height: 580 x 690mm
- Including: 1 simple clamp

EU

A15XX Advanced shoulder support,a pair

115-093660-00



- To support the shoulder of the patient for avoiding unexpected movement
- Pad width x length: 200 x 90mm
- Adjustment options for height and length
- Including: 2 simple clamps

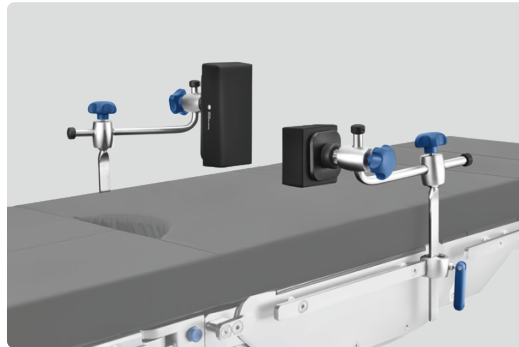
EU

SFC

SFC

A16XX Multi-joint body support,a pair

115-093661-00



- To support the body of the patient for avoiding unexpected movement
- Big pad width x length: 200 x 90mm, small pad width x length: 90 x 90mm
- Multi-joint design helps flexible positioning of the pad
- Including: 2 easy-clip clamps

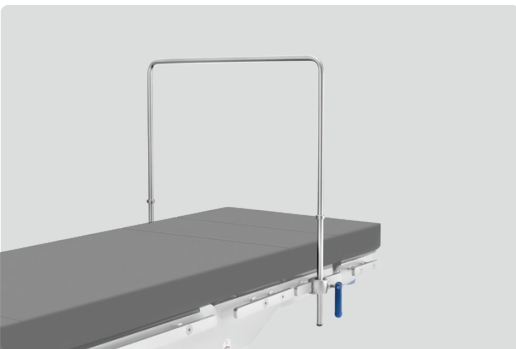
EU

SFC

SFC

A10XX U-Shaped anesthesia frame

115-005689-00



- To hang the anesthesia screen during the surgery
- Width x height: 590 x 690mm
- Including: 2 simple clamps

EU

A11XX Extensible anesthesia frame

0092-30-102654



- To hang the anesthesia screen during the surgery
- Width x height: (650-1190) x 890mm
- Extension can be swivelled
- Including: 1 easy-clip clamp

EU

A45XX Mayo instrument tray

115-095517-00



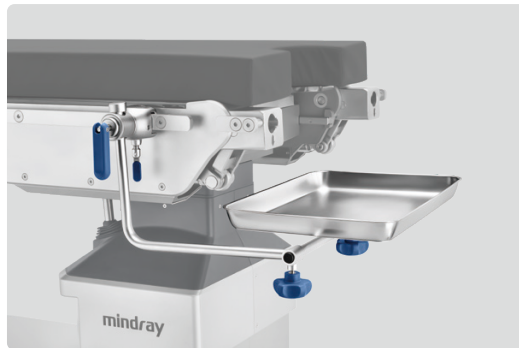
- To place the instruments required during the operation
- Interior dimensions of shelf surface width x length: 300 x 400mm
- Flexible position of the shelf
- Including: 1 easy-clip clamp

5.5KG

EU

A44XX Instrument tray

115-095518-00



- To place the instruments required during the operation
- Interior dimensions of shelf surface width x length: 300 x 400mm
- Flexible position of the shelf

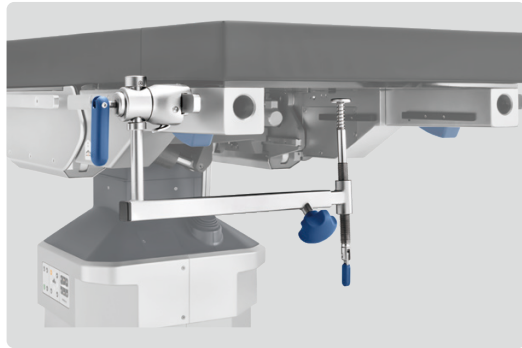
EU

US

5KG

A53XX Cassette fixer

0092-30-102641



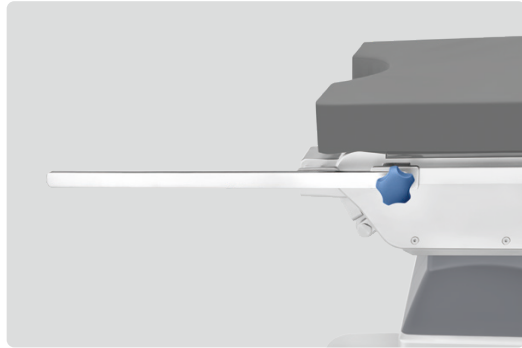
- To fix the X-ray cassette under the table



EU

A30XX Side rail extension

115-033429-00



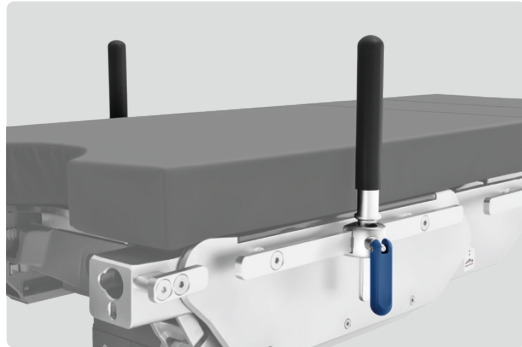
- Can extend the side rail toward the two ends of the operating table, to provide more space for installation of other accessories, such as leg support and foot plate
- Length: 600mm

EU



A07XX Hand grips with clamps,a pair

115-030812-00

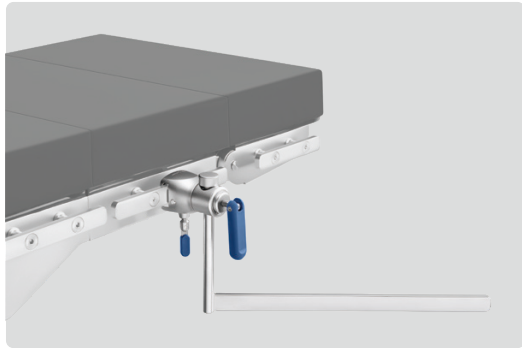


- Can provide something for the woman giving birth to hold onto during or after the pushing phase on the delivery bed
- Length: 310mm
- Including: 2 simple clamps

EU

A31XX Side rail extension(L-shape)

115-039082-00



- Can extend the side rail towards the two sides of the operating table, to provide more space for installation of other accessories
- Height x Length: 205 x 425mm

EU

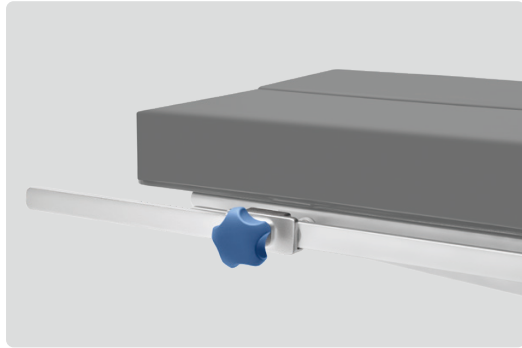


US



A96XX Side rail extension

115-093673-00



- Can extend the side rail toward the two ends of the operating table, to provide more space for installation of other accessories, such as leg support and foot plate
- Length: 315mm

EU



A18XX Suspended arm strap

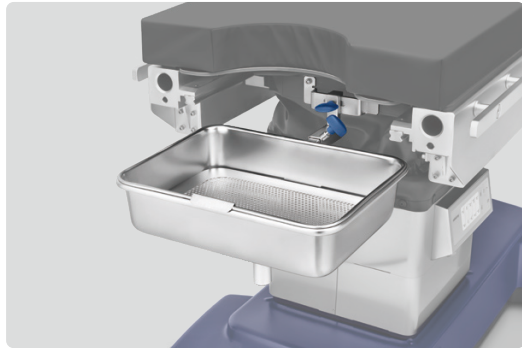
115-007051-00



- To hang the hand of the patient
- Width x length: 120 x 615mm
- Attach to the anesthesia frame
- Including: 1 Nylon strap
- Combination with any anesthesia frame

A70XX Drainage bowl, HyBase 6100

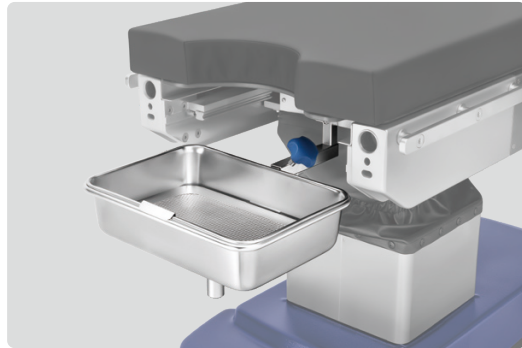
115-005697-00



- To drain the liquid in lithotomy position
- Interior dimensions of shelf surface width x length: 260 x 365mm
- Integrated installing holes

301XX Drainage bowl

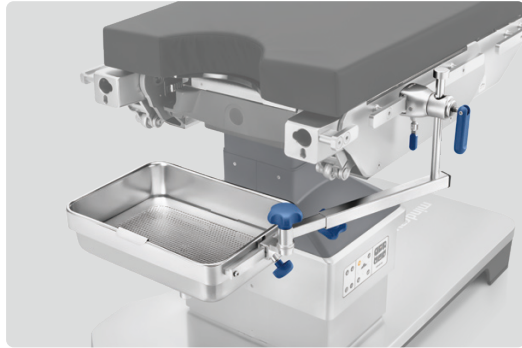
115-013018-00



- To drain the liquid in lithotomy position
- Interior dimensions of shelf surface width x length: 260 x 365mm
- Integrated installing holes

A25XX Drainage bowl,universal

115-034318-00



- To drain the liquid in lithotomy position
- Interior dimensions of shelf surface width x length: 260 x 365mm
- Multi-joint design helps flexible positioning of the bowl

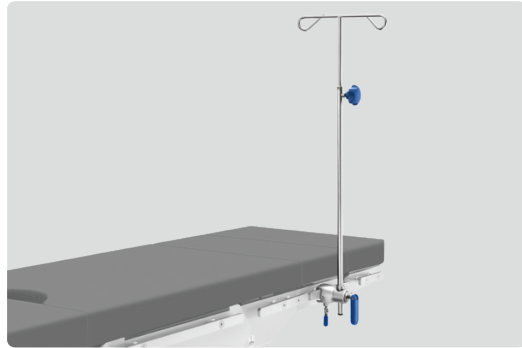
US



EU

A60XX Infusion holder

0092-30-102643



- To hang the infusion bag in the procedure
- Height adjustment: 865-1365mm
- Including: 1 multi-function clamp

US



EU

A01XX Accessory cart

115-008220-00

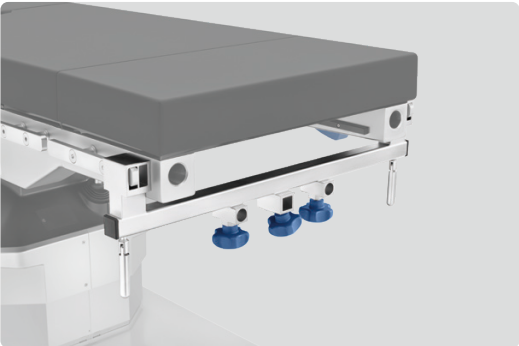


- To place general accessories for the operating table to meet the requirement of various OR rooms
- Width x height x length: 510 x 1050 x 680mm
- Including: 6 hole slottings, 1 basket, and 1 base support



Head Accessories

A47XX Univ. adaptor for head position
115-034319-00



- To connect the adjustable horseshoe headrest, headrest system
- 1 Square mount and 2 round tube mounts for additional head positioning accessories



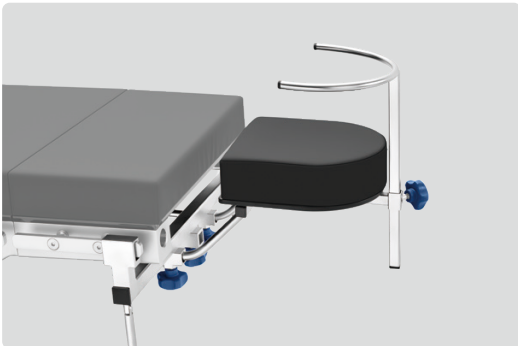
A48XX Adaptor for head positioning ACCs
0092-30-102642



- To connect the adjustable horseshoe headrest, headrest system
- 1 Square mount and 2 round tube mounts for additional head positioning accessories



A51XX Ophthalmic operating plate
115-007045-00



- To support the head of the patient and support the arm of the surgeon during the surgery
- Combination with A47XX Univ. adaptor for head position or A48XX Adaptor for head positioning ACCs



Reison head rest
115-075152-00



- To support the head of the patient
- Height adjustable
- Combination with A47XX Univ. adaptor for head position or A48XX Adaptor for head positioning ACCs



A49XX Head rest,HyHead-2
115-012835-00



- To support the head of the patient providing a stable support for Neurosurgery operation
- Combination with A47XX Univ. adaptor for head position or A48XX Adaptor for head positioning ACCs



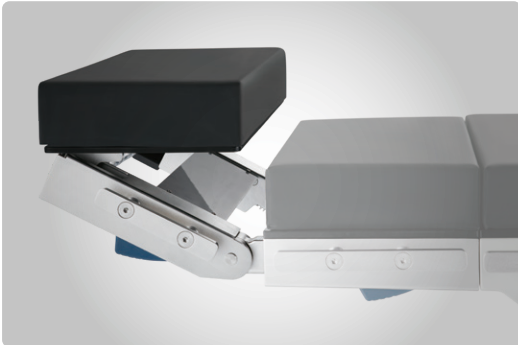
A50XX Head rest
115-059309-00



- To support the head safely and comfortably
- Horseshoe shaped head rest with two installation bars and special foam core pad, height and width adjustable
- Combination with A47XX Univ. adaptor for head position or A48XX Adaptor for head positioning ACCs



A63CX 2-joint head plate 115-079675-00 **CF**
A63XX 2-joint head plate 115-079674-00



- To support the head of the patient
- Pad width x length: 540x250mm
- Dual-joint



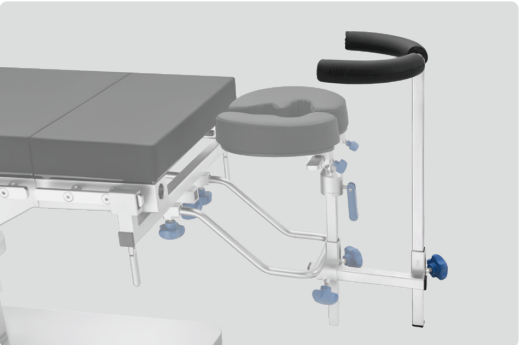
A69CX Head plate 115-079721-00 **CF**
A69XX Head plate 115-079720-00



- To support the head of the patient
- Pad width x length: 540x250mm



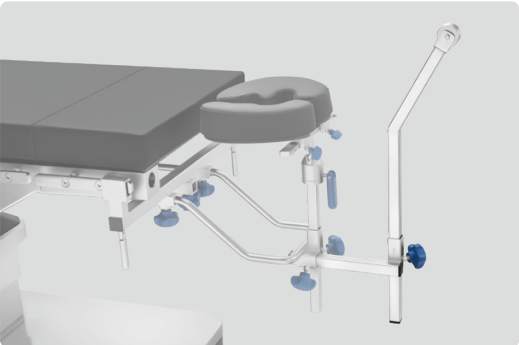
A52XX Wrist support
115-059311-00



- To support the wrist stably to reduce the surgeon's fatigue
- Combination with A50XX Head rest or A51XX Ophthalmic operating plate

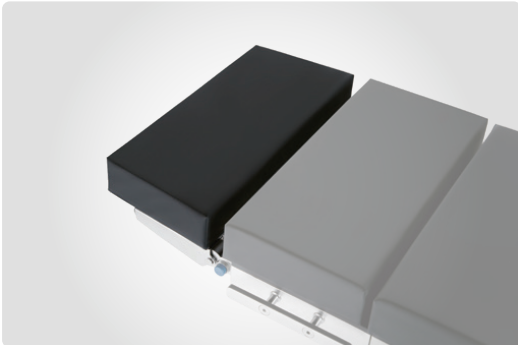


A46XX Guiding roller for cervix traction
115-059313-00



- It is used for the cervical vertebra traction of the spine operation
- Combination with A50XX Head rest

A84CX Head plate 115-085099-00 **CF**
A84XX Head plate 115-085098-00

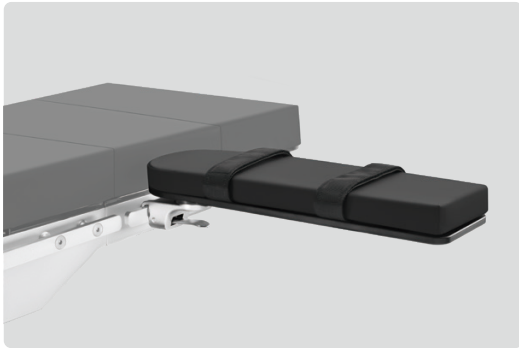


- The head plate is used to support the patient's head during the surgery
- Pad width x length: 530x230mm
- Featherweight head plate to lighten your work



Arm Accessories

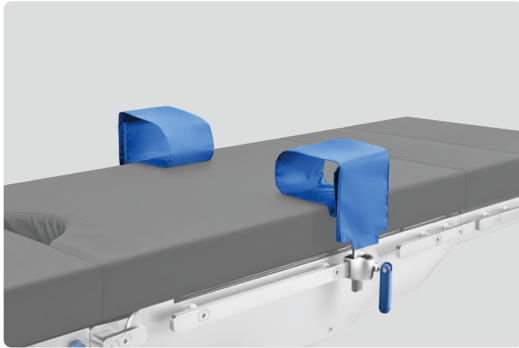
A42XX Easy-clip arm board,a pair
115-083097-00



- To support and fasten the arm of the patient to avoid unexpected moving
- Pad width x length: 140 x 550mm
- Rotation function in horizontal position
- Hidden design of the adjustment lever

EU SFC

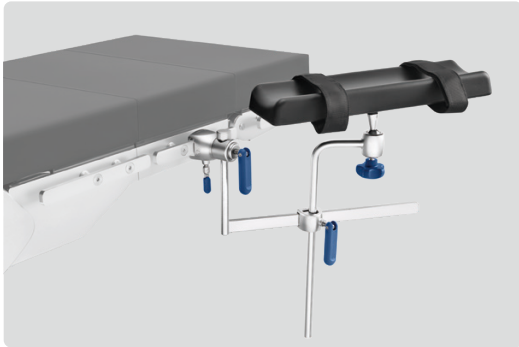
A19XX Wristlet
115-083162-00



- To fasten the hand of the patient
- Including: 2 simple clamps

EU

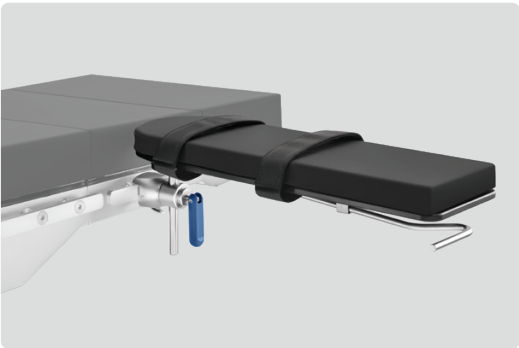
A37XX Arm posturing device
115-083163-00



- To support for patient's arm to effectively protect patient's brachial nerves
- Pad width x length: 120x440mm
- Including: 2 arm boards for lateral position, 2 side rail extensions(L-shape), and 2 simple clamps

US PU EU

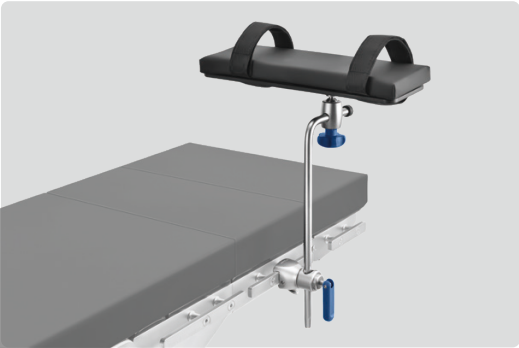
A43XP Arm board, a pair 115-083164-00 **PU**
A43XX Arm board, a pair 115-083165-00 **SFC**



- To support and fasten the arm of the patient to avoid unexpected moving
- Pad width x length: 195 x 630mm(A43XP)
- Pad width x length: 170 x 600mm(A43XX)
- Up & down and rotation function
- Including: 2 easy-clip clamps

EU

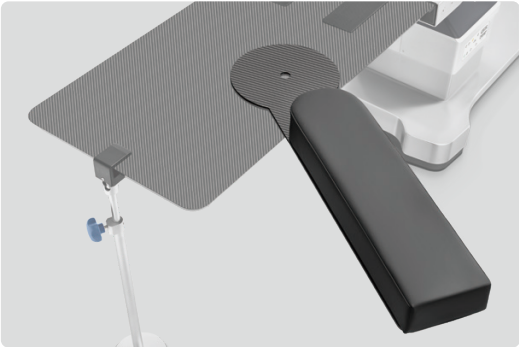
A93XX Multi-position arm board
115-093679-00



- To support and fasten both of the arms of the patient as a lateral position to avoid unexpected movement
- Pad width x length: 135 x 450mm
- More length adjustment and rotation function
- Including: 1 easy-clip clamp

EU SFC

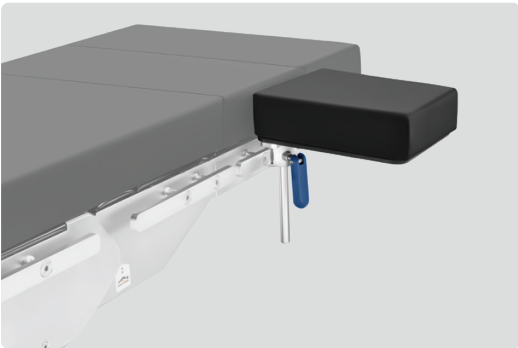
A38XX Carbon fiber arm board,a pair
115-030153-00



- To work with the 1180 cardiac operating plate which provides support for the patient's upper extremities in a supine position
- Pad width x length: 160 x 620mm
- Metal-free and radiolucent
- Easy to slip under the SFC padding

SFC CF

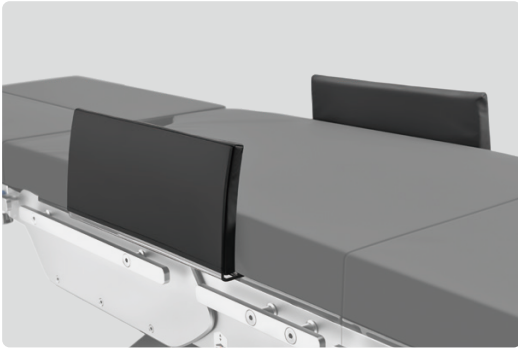
A39XX Upper arm support
115-033415-00



- To support the upper arm of the patient, one piece
- Pad width x length: 210 x 250mm
- Including: 1 simple clamp

SFC EU

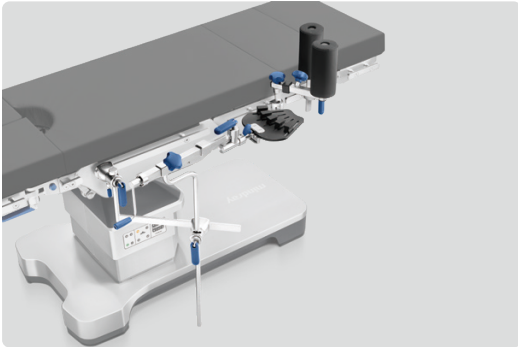
A94XX Arm protector
115-093674-00



- To protect patient's arm, one pair
- Width x height x length: 190 x 165 x 400mm
- Easy to slip under the SFC padding

SFC

A55XX Forearm extension device
115-033421-00



- To fix and pull patient's forearms
- Consists of auxillary pillar, elbow joint pillar, palm & finger fixer and tractor
- Including: 1 easy-clip clamp & 2 simple clamps
- Combination with A31XX side rail extension (L-shape)(115-039082-00)

EU

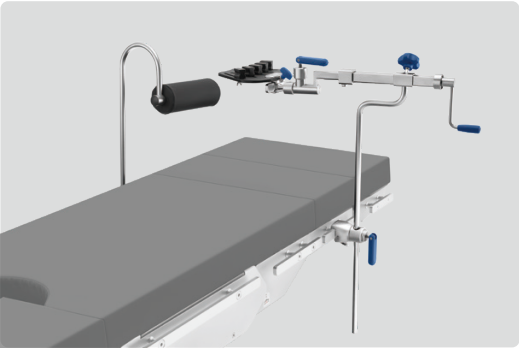
A40XX Arm operating table
115-007047-00



- To support the arm of the patient and the hand of the surgeon
- Pad width x length: 350 x 800mm

EU SFC

A56XX Upper arm extension device
115-033422-00

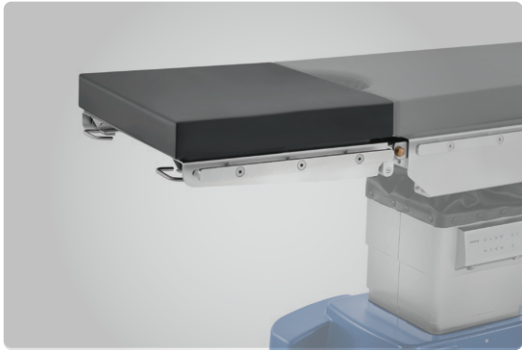


- To fix and pull patient's forearms
- Consists of auxillary pillar, elbow joint pillar, palm & finger fixer and tractor
- Including: 2 easy-clip clamps

EU

Leg Accessories

A57XP One-section leg plate 115-005683-00 PU
A57XX One-section leg plate 115-005685-00 SFC



- To support the leg with one-section plate during the surgery
- Pad width x length: 520 x 490mm(A57XP)
- Pad width x length: 520 x500mm(A57XX)
- Release bracket assists

EU

A64CX 2-joint leg plate 115-079673-00 CF
A64XX 2-joint leg plate 115-079672-00

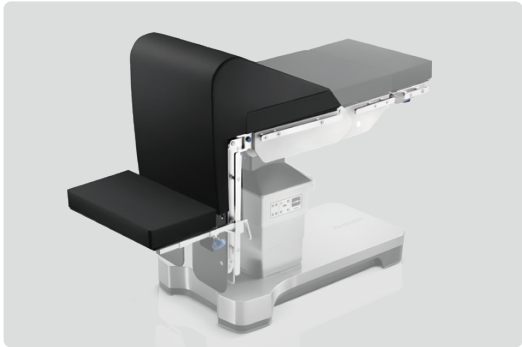


- To support the legs of the patient during the surgery
- Pad width x length: 250 x 715mm
- A double-joint design helps doctors get closer to the surgical site

SFC

EU

A02XX Rectal positioning device
115-007049-00



- To support the coxa and knees of the patient in rectal surgery
- Including: fastening strap, rectal pad, and supporting plate assembly

EU

A68CX One-section leg plate CF
115-085101-00
A68XX One-section leg plate
115-085100-00

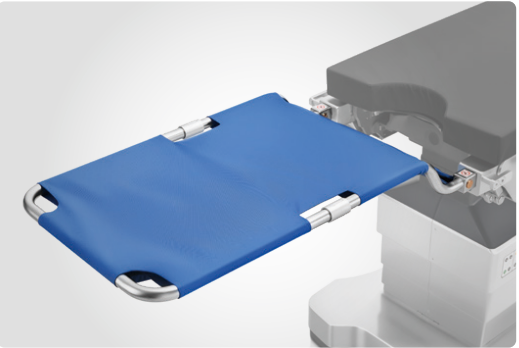


- To support the leg with one-section plate during the surgery
- Pad width x length: 520 x 520mm

SFC

EU

A03XX Transfer board
115-052205-00



- application:To support the legs temporarily during lithotomy position
- Width x length: 500 x 880mm
- Lightweight plate can be disassembled and installed in one step, in order to reduce the workload of medical staff
- With locking device

135KG

A85CX Leg plate 115-085097-00 CF
A85XX Leg plate 115-085096-00

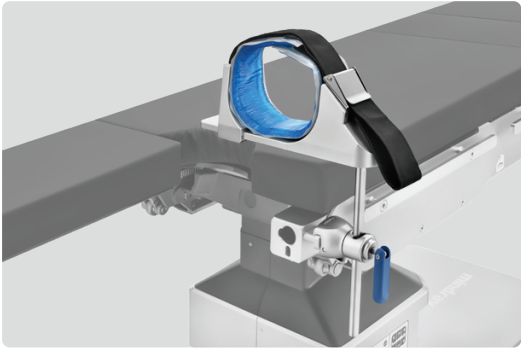


- To support the legs of the patient during the surgery
- Pad width x length: 250 x 715mm
- Release bracket assists

SFC

EU

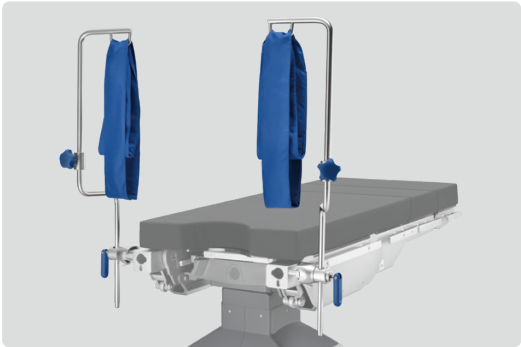
A26XX Arthroscopic leg holder
115-033413-00



- To fasten and support the knee of the patient
- Height: 420mm
- Including: 1 easy-clip clamp

EU

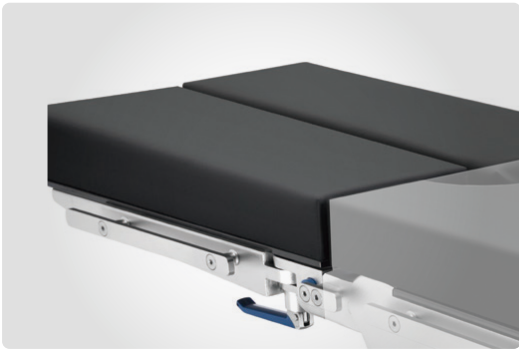
A08XX Leg holder with loops,a pair
115-007043-00



- To support and fasten the patient's leg
- Height: 830mm
- Including: 2 easy-clip clamps

EU

V02CX Leg plate 115-079723-00 CF
V02XX Leg plate 115-079722-00

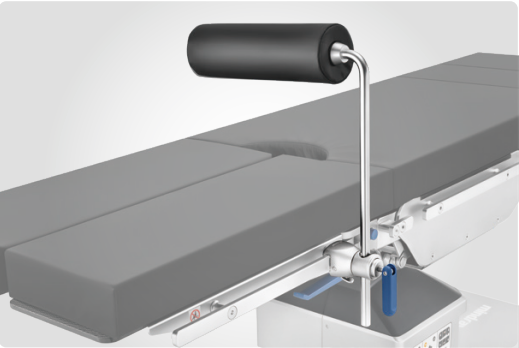


- To support the legs of the patient during the surgery
- Pad width x length: 250 x 650mm

SFC

EU

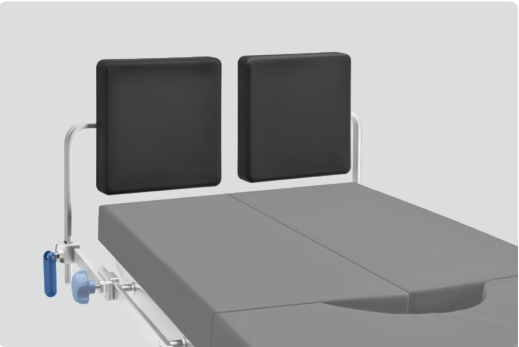
A27XX Meniscus positioning device
115-033416-00



- To provide support for patient's thigh or foot during knee joint surgeries
- Height: 500mm
- Including: 1 easy-clip clamp

EU

A24XX Foot plate,a pair
115-083146-00



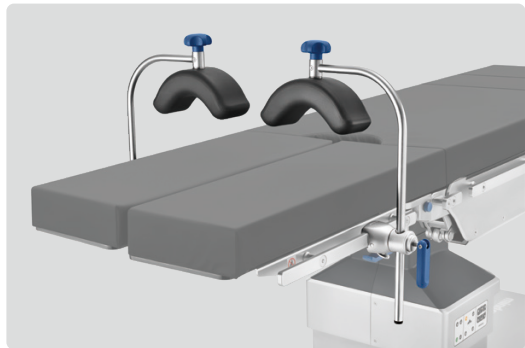
- To support the foot of the patient for avoiding unexpected movement
- Pad width x length: 240 x 250mm
- Combination with double A96XX Side rail extension (115-093673-00)

EU

PU



A22XX Thigh holder,a pair 115-012841-00
A23XX Shank holder,a pair 115-012843-00



- To support the femur of the patient during the surgery
- Height: 510mm
- Including: 2 easy-clip clamps

PU

EU

A61XX Basic stirrups,a pair
115-062767-00



- To support and fasten the patient's leg
- Including: 2 multi-function clamps

US

135KG

EU

A58XX Stirrup cart
115-075117-00



- To store the stirrup
- Width x height x length: 440 x 1020 x 440mm

20KG

A20XX Leg restraint cuff,thigh,a pair 115-033430-00
A21XX Leg restraint cuff,shank,a pair 115-033431-00



- To secure the patient's thigh/ shank
- Pad width: 120mm

CF

EU

A62XX Standard stirrups,a pair
115-062765-00



- To support and fasten the leg of the patient
- Foot and calf support is automatically adapted when the position of the leg is adjusted
- With gas spring assisted
- Including: 2 clamps only for standard stirrups
- Recommended with A58XX Stirrup cart or A01XX Accessory cart

160KG

EU

HyExtent-V CF w/cart
115-087232-00



- During the orthopedic traction surgery, it is used to pull the femur to meet the need of x-rays
- The device is made of highly-transmissible carbon fiber materials to improve image qualities

CF

HyExtent-V w/cart,comfort
115-087231-00



- To provide leg traction during orthopedic surgery
- Adopt more ergonomic traction boots
- Stainless steel, including the cart

CF

HyExtent-V w/cart,basic
115-087230-00



- To provide leg traction during orthopedic surgery
- Stainless steel, including the cart
- Basic boots

A89XX Unilateral lithotomy position ASSY 115-087236-00



- To support and fasten the patient's leg

EU

A86XX Tibia & fibula ASSY for HyExtent-V 115-087233-00



- To provide tibial and fibula traction

EU

A87XX Lateral femur ASSY for HyExtent-V 115-087234-00



- To provide femur traction in lateral position

A88XX Transfer leg plate for HyExtent-V 115-087235-00



- During surgeries, it is used to temporarily support the patient's lower extremities when positioning the patient or transferring the patient

SFC

A90XX Leg support for HyExtent-V 115-087237-00

A91XX Leg support for HyExtent-V CF 115-087238-00



- Support the injured leg during the orthopedic operation

A92XX L-shaped traction extensions 115-087240-00

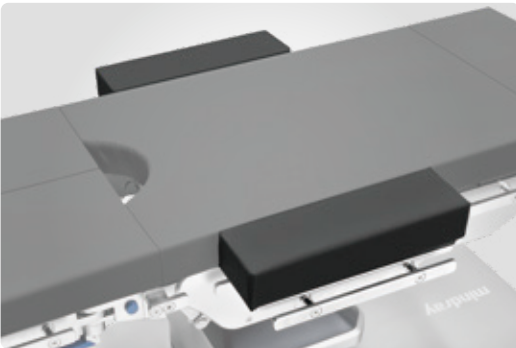


- It is used for extending traction distance of the lower extremity for HyExtent-V

HyExtent-V CF w/cart and HyExtent-V w/cart are suitable for HyBase V series,HyBase 6100,HyBase 3000 operating table

Back Accessories

A54XX Table width extender,a pair
115-030814-00



- To widen the operating table top and provide comfortable lying for larger-sized patients
 - Pad width x length: 120 x 420mm
- EU
- SFC
-

V01CX Cardiac operating plate,CF
115-084234-00



- Extend the head or foot end of the table top for 1180mm to provide 360° X-ray radiolucency for cardiovascular surgeries and spine surgeries
 - Stand bars provided
 - Available versions: 115-097074-00 V01CX Cardiac operating plate w/ cart
- CF
- SFC
- 135KG

A67CX Extension plate 115-079671-00

A67XX Extension plate 115-079670-00



- To provide more perspective space or more standing space for doctors. Applicable to trauma, spine, gynecology, or urology
 - Pad width x length: 540x305mm
 - With Gynecological groove
- SFC
- EU

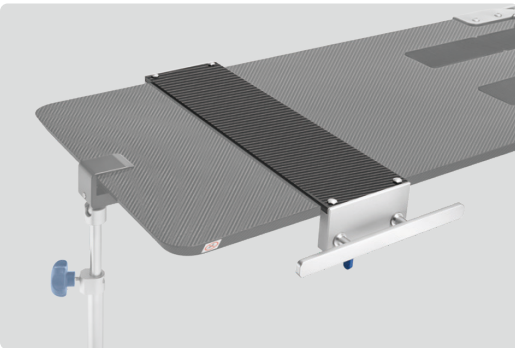
V03CX Upper back plate

V03XX Upper back plate



- To support the back of the patient during surgeries
 - Pad width x length: 540x255mm
- EU
- SFC

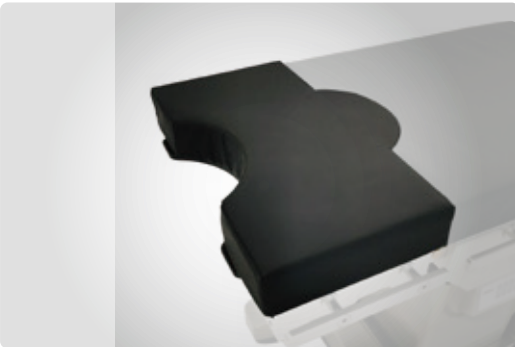
A81XX Accessory adaptor,CF
115-030151-00



- To provide an additional side rail for the 1180 cardiac operating plate. It can be used to install accessories such as arm boards and shoulder supports
 - Side rail length: 300mm
- EU
- CF

A06XP Extension plate 115-072051-00

A06XX Extension plate 115-072052-00



- To provide more perspective space or more standing space for doctors. Applicable to trauma, spine, gynecology, or urology
 - Pad width x length: 520x260mm
- EU

A04XX Back plate for shoulder operation
115-081868-00



- To support the head and back of the patient providing a stable support for shoulder operation
 - Whole pads width x length: 500 x 650mm
 - removable pad width x length: 170 x 340mm
 - Helmet can be swivelled and inclined
 - Good access to the shoulder region thanks to removable shoulder modules
 - Combination with Combination with A05XX Shoulder chair dolly (115-081869-00)
 - Installed on the leg side in reverse position
 - Not applicable for European and Australian markets
- SFC
- EU

A71XX Body strap for shoulder operation
115-059315-00

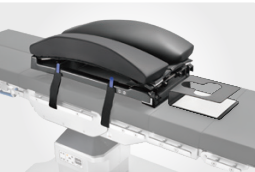


- To fasten the body of the patient for the shoulder operation by beach-chair position
- Total length: 2000mm
- Contains only one strap

Bow frame for spine operation
115-052219-00

A75XX Pad set for bow frame,a pair
115-053654-00

A76XX Foam head block stand of bow frame
115-053656-00



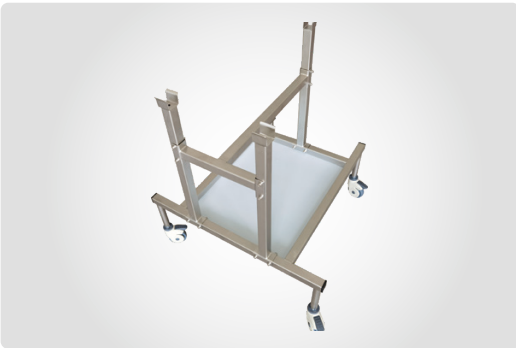
- Bow frame is used to support the patient's body
- Foam head block supports the head in prone position
- Pad set gives a comfortable support for the chest
- Bow frame is adjustable for length and width according to different patients

A74XX Bow frame disposable cover(6 sets)
115-052223-00



- To prevent the pad getting dirty during spine operation
- Disposable covers for bow frame(6 pcs)

A05XX Shoulder chair dolly
115-081869-00



- To place the back plate for shoulder operation (115-081868-00)
- Width x height x length: 670 x 780 x 680mm

A66XX Back plate for shoulder operation
115-079669-00



- To support the head and back of the patient providing a stable support for Shoulder operation
 - Pad width x length: 520x290mm
 - Helmet can be swivelled and inclined
 - Good access to the shoulder region thanks to removable shoulder modules
- SFC

A73XX Bow frame cart
115-052221-00



- To store and transfer the bow frame
- Combination with Bow frame for spine operation(115-052219-00)

Accessories for Gynecology&Urology

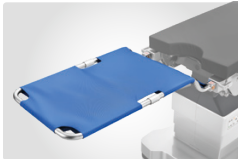
Lithotomy Position
- Gynecology&Urology Surgery



A29XX Advanced leg support, a pair
115-093670-00



A03XX Transfer board
115-052205-00



Lithotomy Position
- Gynecology&Urology Surgery



A62XX Standard stirrups,a pair
115-062765-00



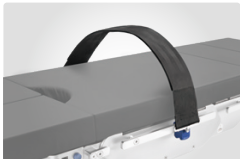
A58XX Stirrup cart
115-075117-00



Lateral Position - Kidney Surgery



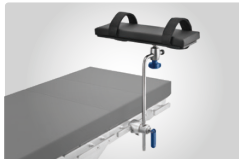
A95XX Advanced body strap
115-093658-00



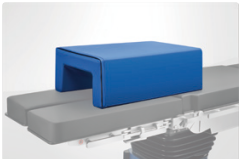
A16XX Multi-joint body support,a pair
115-093661-00



A93XX Multi-position arm board
115-093679-00



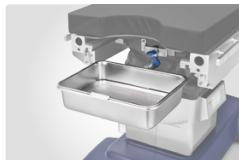
P22XX Lateral positioner
115-047824-00



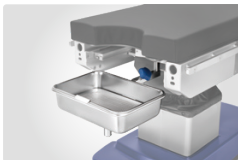
Lithotomy Position
- Gynecology&Urology Surgery



A70XX Drainage bowl, HyBase 6100
115-005697-00



301XX Drainage bowl
115-013018-00



A25XX Drainage bowl, universal
115-034318-00



A29XX Advanced leg support,a pair
115-093670-00



Kneeling Position - Colorectal Surgery



A02XX Rectal positioning device
115-007049-00



Orthopedic Accessories

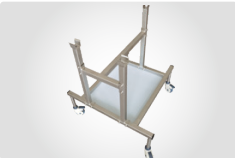
Beach-chair Position - Shoulder Surgery



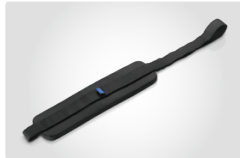
A04XX Back plate for shoulder operation 115-081868-00



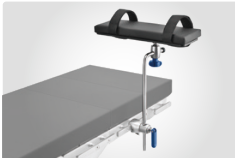
A05XX Shoulder chair dolly 115-081869-00



A71XX Body strap for shoulder operation 115-059315-00



A93XX Multi-position arm board 115-093679-00



Beach-chair Position - Shoulder Surgery



A66XX Back plate for shoulder operation 115-079669-00



A71XX Body strap for shoulder operation 115-059315-00



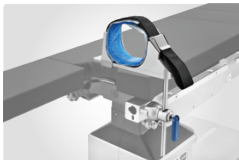
A93XX Multi-position arm board 115-093679-00



Supine Position - Knee Arthroscopic Surgery



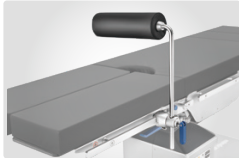
A26XX Arthroscopic leg holder 115-033413-00



Supine Position - Knee Arthroplasty Surgery



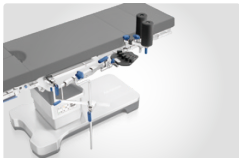
A27XX Meniscus positioning device 115-033416-00



Supine Position - Forearm Traction Surgery



A55XX Forearm extension device 115-033421-00



Supine Position - Upper Arm Traction Surgery



A56XX Upper arm extension device 115-033422-00



Supine Position - Upper Limb Repair Surgery



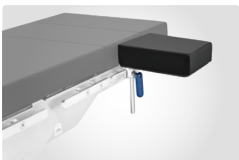
A40XX Arm operating table 115-007047-00



Supine Position - Upper Arm Surgery



A39XX Upper arm support 115-033415-00



Lower Limb Traction Position - Single/Double Lower Limb Traction



HyExtent-V CF w/cart 115-087232-00



HyExtent-V w/cart, comfort 115-087231-00



HyExtent-V w/cart, basic 115-087230-00



A89XX Unilateral lithotomy position ASSY 115-087236-00



Lower Limb Traction Position - Tibia and Fibula Traction



A86XX Tibia & fibula ASSY for HyExtent-V 115-087233-00



Lower Limb Traction Position - Traction in Lateral Position



A87XX Lateral femur ASSY for HyExtent-V 115-087234-00



Neurosurgery Accessories

Supine Position - Neurosurgery



Adult horseshoe headrest w.Ext*
DJ15-0101-301
Pedia horseshoe headrest w.Ext*
DJ15-0101-302



- A solution for supporting the head more safely and comfortably, used with headrest system

Sitting Position - Neurosurgery



Titanium skull pin,adult(3pcs)*
DJ15-0101-201
Titanium skull pin,pedia(3pcs)*
DJ15-0101-202
Stainless steel skull pin,adult(3pcs)*
DJ15-0101-203
Stainless steel skull pin,pedia(3pcs)*
DJ15-0101-204



DORO LUCENT Headrest System*
DJ15-0101-003



- Radiolucent for C-arm access,
- Including base unit, swivel adaptor, transitional member and skull clamp; not including skull pins

Aluminum headrest*
DJ15-0101-001



- For supine, prone, lateral positions, please select the adaptor for head position(PN: 0092-30-102642 or115-034319-00); For sitting positions, please select crossbar adaptor (PN: DJ15-0101-101);
- Including base unit, swivel adaptor and skull clamp; not including skull pins

Crossbar adaptor with clamps
DJ15-0101-101



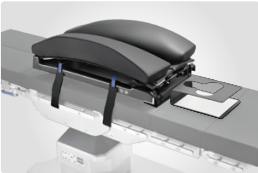
- Crossbar adaptor with clamps for headrest system in sitting positions

*only allow to sale with the table together as a package

Prone Position - Spinal Surgery



Bow frame for spine operation
115-052219-00
A75XX Pad set for bow frame,a pair
115-053654-00
A76XX Foam head block stand of bow frame
115-053656-00



A74XX Bow frame disposable cover(6 sets)
115-052223-00



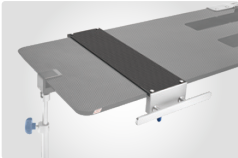
A73XX Bow frame cart
115-052221-00



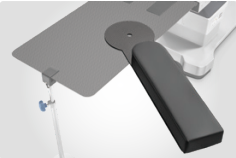
V01CX Cardiac operating plate w/ cart
115-097074-00



A81XX Accessory adaptor,CF
115-030151-00



A38XX Carbon fiber arm board,a pair 115-030153-00



Accessories for Controlling and Easier Application

V04XX Foot switch

115-079752-00



- To control the table movement

V05XX Assist drive handle

115-079748-00



- To assist in controlling and moving the operating table

A59XX Foot switch

0092-30-102644



- To control the table movement

V06XX Remote control module

115-079749-00



- To control the table movement

Comfort Solution Accessories

Head ring



115-005872-00 **P34LX Head ring** (20×7×7cm)

- Relieve the pressure on the head in supine position

115-005873-00 **P34MX Head ring** (20×7×5cm)

- Relieve the pressure on the head in supine position, suitable for most patients

115-005877-00 **P34SX Head ring** (20×7×3cm)

- Relieve the pressure on the head in supine position

115-005874-00 **P09LX Paediatric head ring** (14×5×3cm)

- Relieve the pressure on the head in supine position, suitable for children aged 2-10 years

115-005878-00 **P09MX Paediatric head ring** (14×7×2.5cm)

- Relieve the pressure on the head in supine position, suitable for children aged 2-10 years

115-005875-00 **P09SX Paediatric head ring** (10×4×2.5cm)

- Relieve the pressure on the head in supine position, suitable for children aged 5-24 months

115-005876-00 **P32XX Infant head ring** (8×3×2cm)

- Relieve the pressure on the head in supine position, suitable for children aged 0-5 months

Horseshoe head ring



115-005885-00

P16LX Horseshoe head ring (20×7×7cm)

- Relieve the pressure on the ear in lateral position, suitable for male patients with broad shoulders

115-005886-00

P16MX Horseshoe head ring (20×7×5cm)

- Relieve the pressure on the ear in lateral position, suitable for most patients

115-005890-00

P16SX Horseshoe head ring (20×7×3cm)

- Relieve the pressure on the ear in lateral position, suitable for female patients with narrow shoulders

115-005887-00

P07LX Paediatric horseshoe head ring (14×5×3cm)

- Relieve the pressure on the ear in lateral position, suitable for suitable for children aged 2-10 years

115-005888-00

P07SX Paediatric horseshoe head ring (10×4×2.5cm)

- Relieve the pressure on the ear in lateral position, suitable for children aged 5-24 months

115-005889-0 **P31XX Infant head ring** (8×3×2cm)

- Relieve the pressure on the ear in lateral position, suitable for children aged 0-5 months

Ophthalmic head pad



115-005896-00 **P29LX Ophthalmic head pad** (23×23×4cm)

- Stable the head during the ENT and eye surgery

115-005897-00 **P29MX Ophthalmic head pad** (22×19×6cm)

- Stable the head during the ENT and eye surgery

115-038076-00 **P29SX Ophthalmic pad,paediatric** (15×15×3.5cm)

- Stable the head during the ENT and eye surgery

115-005898-00 **P30XX Pillow for supine position** (24×22×7cm)

- Stable the head during the ENT and eye surgery

Prone position pillow



115-005864-00 **P06XX Prone position pillow** (28×24×14cm)

- Support the head in prone position,only suitable for patients inserted the hose during anesthesia

115-005830-00 **P11XX Prone position pillow** (25×20×10cm)

- only suitable for postoperative recovery of eye surgery patients

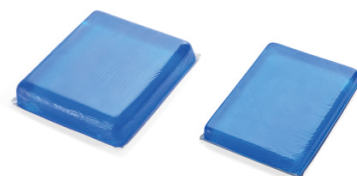
115-038074-00 **P19XX Prone pillow,full support** (23×20×11cm)

- Support the head in prone position with fully surrounded design. Must be used with Pad for intervertebral disc (Ops)(0092-30-102639)

115-038075-00 **P08XX Paediatric prone pillow** (21×18×11cm)

- Relieve the pressure on the head in prone position, suitable for children aged 2-10 years

Universal supine pad



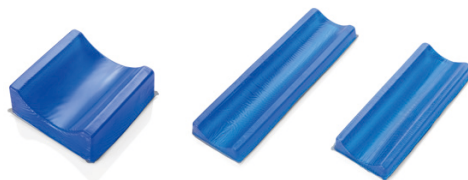
115-005900-00 **P26LX Universal Head Pad** (25×23×6cm)

- Relieve the pressure on the head in supine position

115-005832-00 **P26SX Universal Head Pad** (25×18×3cm)

- Relieve the pressure on the head in supine position

Arm/leg pad



115-005892-00 **P25XX Universal supine pad** (18×18×8cm)

- Support the shoulder, hip and knee in lateral position

115-005811-00 **P03LX Arm/leg pad** (50×15×4cm)

- Protect the knee in prone position, and support the arm

115-005812-00 **P03SX Arm/leg pad** (40×15×4cm)

- Support the arm on the arm board for lateral position

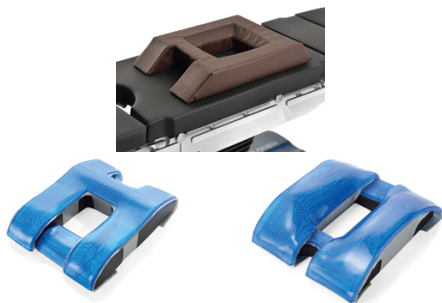
Lateral positioner



115-005910-00 **P05XX Lateral positioner** (72×46×15cm)

- Support the body in lateral position, combined with back plate down and horseshoe head ring

Prone position pad



0092-30-102639 **P02XX Pad for intervertebral disc Ops** (64×42×10cm)

- Support and protect the patient's chest and abdomen in prone position

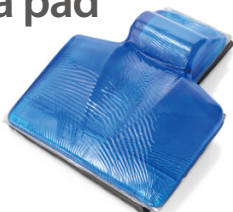
115-005788-00 **P10XX Pad for intervertebral disc** (63×46×15cm)

- Suitable for thoracolumbar surgery ,but more inclined to cervical, lumbar surgery

115-038080-00 **P33XX Prone position pad,hard inner** (60×49×18cm)

- Suitable for thoracolumbar surgery ,but more inclined to thoracic surgery

Struma pad



115-038077-00 **P15XX Struma pad** (48×39×9cm)

- Expose the surgical field and enhance support and protection of the neck during thyroid and neck surgery

Heel pad



115-083123-00 **P12XX Heel pad** (18×10×7cm)

- Protect the heel

Lateral positioner



115-047824-00 **P22XX Lateral positioner** (64×40×22cm)

- Protect the lower thigh from compression in lateral position, suitable for overweight patients

Short gel body roll



- 115-005803-00 **P35LX Short gel body roll** (30×15×7cm)
- 115-005807-00 **P35MX Short gel body roll** (30×10×7cm)
- 115-005804-00 **P35SX Short gel body roll** (30×10×4cm)
- Protect knee and ankle in supine position, support chest and hip in prone position, and protect armpit in lateral position
- 115-038079-00 **P04XX Gel body roll, paediatric** (20×10×7cm)
- Protect knee and ankle in supine position, support chest and hip in prone position, and protect armpit in lateral position

Long gel body roll



- 115-005805-00 **P17LX Long gel body roll** (50×15×7cm)
- Protect knee and ankle in supine position, and protect armpit in lateral position
- 115-005808-00 **P17MX Long gel body roll** (50×10×7cm)
- Protect knee and ankle in supine position, support chest and hip in prone position, and protect armpit in lateral position
- 115-005806-00 **P17SX Long gel body roll** (50×10×4cm)
- Protcet the hip in lateral position

Protection strap



- 115-005796-00 **P23XX Body strap** (60×7×1cm)
- Fasten the body
- 115-083121-00 **P18XX Elbow protection strap** (40×15×1.5cm)
- Fasten the elbow
- 115-083122-00 **P13XX Ankle protection strap** (45×7×1cm)
- Fasten the ankle
- 115-005908-00 **P27XX Wrist protector**(25×5×1cm)
- Fasten the wrist

Universal square pad



- 115-005820-00 **P24LX Universal square pad** (50×30×1.5cm)
- 115-005819-00 **P24MX Universal square pad** (40×24×1.5cm)
- Protect the popliteal fossa on leg support in lithotomy position, and protect shoulder and hip in lateral position
- 115-005818-00 **P24SX Universal square pad** (30×20×1.5cm)
- Protect the popliteal fossa on leg support in lithotomy position, and protect shoulder and hip in lateral position

Universal arm board pad



- 115-083144-00 **P20LX Universal arm board pad** (60×16×1cm)
- Support the arm on the arm board in lateral and supine position
- 115-083143-00 **P20SX Universal arm board pad** (40×16×1cm)
- Support the arm on the arm board for lateral position

Chest-hipbone pad



- 115-005790-00 **P28XX Chest-hipbone pad** (50×20×7cm)
- Protect chest and hip in prone position, support the shoulder in supine position, and protect the entire chest stretch during cardiac surgery

Pad for countertraction post



- 115-005794-00 **P14XX Pad for countertraction post** (27×20×1.5cm)
- Protect the perineum when using an orthopedic extension device

Universal hip pad



- 115-038078-00 **P01XX Universal hip pad** (50×40×1.5cm)
- Protect the sacral tail

Table pads



- 115-005826-00 **P21XX Table pads,3 pieces**
- Relieve the pressure on the body in supine position
- Head: 23×50×1.5cm | Torso: 100×50×1.5cm | Lower limb: 50×50×1.5cm

Recommended Accessories

General Accessories

CODE	ACCESSORIES	UniBase 30	HyBase 3000	HyBase 6100	HyBase V8 Classic	HyBase V8
115-093676-00	A34XX Easy-clip clamp	√	√	√	√	√
115-093677-00	A35XX Multi-function clamp	√	√	√	√	√
115-093675-00	A33XX Simple clamp	√	√	√	√	√
0092-30-102645	A12XX Anesthesia frame	√	√	√	√	√
115-005689-00	A10XX U-Shaped anesthesia frame	-	√	√	√	√
0092-30-102654	A11XX Extensible anesthesia frame	√	√	√	√	√
0092-30-102640	A13XX Body strap	√	√	√	√	√
115-093658-00	A95XX Advanced body strap	√	√	√	√	√
115-093660-00	A15XX Advanced shoulder support,a pair	√	√	√	√	√
115-093661-00	A16XX Multi-joint body support,a pair	√	√	√	√	√
115-095517-00	A45XX Mayo instrument tray	√	√	√	√	√
115-095518-00	A44XX Instrument tray	√	√	√	√	√
0092-30-102641	A53XX Cassette fixer	√	√	√	√	√
115-039082-00	A31XX Side rail extension(L-shape)	√	√	√	√	√
115-033429-00	A30XX Side rail extension	√	√	√	√	√
115-093673-00	A96XX Side rail extension	√	√	√	√	√
115-030812-00	A07XX Hand grips with clamps,a pair	√	√	√	√	√
115-007051-00	A18XX Suspended arm strap	√	√	√	√	√
115-005697-00	A70XX Drainage bowl,HyBase 6100	-	-	√	-	-
115-013018-00	301XX Drainage bowl	-	√	-	-	-
115-034318-00	A25XX Drainage bowl,universal	√	√	√	√	√
0092-30-102643	A60XX Infusion holder	√	√	√	√	√
115-008220-00	A01XX Accessory cart	√	√	√	√	√

Head Accessories

CODE	ACCESSORIES	UniBase 30	HyBase 3000	HyBase 6100	HyBase V8 Classic	HyBase V8
115-034319-00	A47XX Univ. adaptor for head position	√	√	√	√	√
0092-30-102642	A48XX Adaptor for head positioning ACCs	-	√	√	√	√
115-012835-00	A49XX Head rest,HyHead-2	-	√	√	√	√
115-059309-00	A50XX Head rest	√	√	√	√	√
115-059311-00	A52XX Wrist support	√	√	√	√	√
115-059313-00	A46XX Guiding roller for cervix traction	√	√	√	√	√
115-007045-00	A51XX Ophthalmic operating plate	-	√	√	√	√
115-075152-00	Reison head rest	√	√	√	√	√
115-079675-00	A63CX 2-joint head plate	-	-	-	√	√
115-079674-00	A63XX 2-joint head plate	-	-	-	√	√
115-079721-00	A69CX Head plate	-	-	-	√	√
115-079720-00	A69XX Head plate	-	-	-	√	√
115-085099-00	A84CX Head plate	-	-	-	√	√
115-085098-00	A84XX Head plate	-	-	-	√	√

Arm Accessories

CODE	ACCESSORIES	UniBase 30	HyBase 3000	HyBase 6100	HyBase V8 Classic	HyBase V8
115-083097-00	A42XX Easy-clip arm board,a pair	√	√	√	√	√
115-083164-00	A43XP Arm board, a pair	-	√	√	√	√
115-083165-00	A43XX Arm board,a pair	√	√	√	√	√
115-083162-00	A19XX Wristlet	√	√	√	√	√
115-093679-00	A93XX Multi-position arm board	√	√	√	√	√
115-083163-00	A37XX Arm posturing device	√	√	√	√	√
115-030153-00	A38XX Carbon fiber arm board,a pair	-	-	-	√	√
115-033415-00	A39XX Upper arm support	√	√	√	√	√
115-007047-00	A40XX Arm operating table	√	√	√	√	√
115-093674-00	A94XX Arm protector	√	√	√	√	√
115-033422-00	A56XX Upper arm extension device	√	√	√	√	√
115-033421-00	A55XX Forearm extension device	√	√	√	√	√

Leg Accessories

CODE	ACCESSORIES	UniBase 30	HyBase 3000	HyBase 6100	HyBase V8 Classic	HyBase V8
115-005683-00	A57XP One-section leg plate	-	√	√	-	-
115-005685-00	A57XX One-section leg plate	-	√	√	√	-
115-085101-00	A68CX One-section leg plate	-	-	-	-	√
115-085100-00	A68XX One-section leg plate	-	-	-	-	√
115-079673-00	A64CX 2-joint leg plate	-	-	-	-	√
115-079672-00	A64XX 2-joint leg plate	-	-	-	-	√
115-052205-00	A03XX Transfer board	-	√	√	√	√
115-007049-00	A02XX Rectal positioning device	-	√	√	√	√
115-093670-00	A29XX Advanced leg support,a pair	√	√	√	√	√
115-085097-00	A85CX Leg plate	-	-	-	√	-
115-085096-00	A85XX Leg plate	-	-	-	√	-
115-079723-00	V02CX Leg plate	-	-	-	-	√
115-079722-00	V02XX Leg plate	-	-	-	-	√
115-033413-00	A26XX Arthroscopic leg holder	√	√	√	√	√
115-033416-00	A27XX Meniscus positioning device	√	√	√	√	√
115-007043-00	A08XX Leg holder with loops,a pair	√	√	√	√	√
115-083146-00	A24XX Foot plate,a pair	√	√	√	√	√
115-012841-00	A22XX Thigh holder,a pair	√	√	√	√	√
115-012843-00	A23XX Shank holder,a pair	√	√	√	√	√
115-033430-00	A20XX Leg restraint cuff,thigh,a pair	√	√	√	√	√
115-033431-00	A21XX Leg restraint cuff,shank,a pair	√	√	√	√	√
115-062767-00	A61XX Basic stirrups,a pair	√	√	√	√	√
115-062765-00	A62XX Standard stirrups,a pair	√	√	√	√	√
115-075117-00	A58XX Stirrup cart	√	√	√	√	√
115-087232-00	HyExtent-V CF w/ cart	-	√	√	√	√
115-087230-00	HyExtent-V w/cart,basic	-	√	√	√	√
115-087231-00	HyExtent-V w/cart,comfort	-	√	√	√	√
115-087236-00	A89XX Unilateral lithotomy position ASSY	-	√	√	√	√
115-087233-00	A86XX Tibia & fibula ASSY for HyExtent-V	-	√	√	√	√
115-087234-00	A87XX Lateral femur ASSY for HyExtent-V	-	√	√	√	√

CODE	ACCESSORIES	UniBase 30	HyBase 3000	HyBase 6100	HyBase V8 Classic	HyBase V8
115-087235-00	A88XX Transfer leg plate for HyExtent-V	√	√	√	√	√
115-087237-00	A90XX Leg support for HyExtent-V	√	√	√	√	√
115-087238-00	A91XX Leg support for HyExtent-V CF	√	√	√	√	√
115-087240-00	A92XX L-shaped traction extensions	√	√	√	√	√

Back Accessories

CODE	ACCESSORIES	UniBase 30	HyBase 3000	HyBase 6100	HyBase V8 Classic	HyBase V8
115-030814-00	A54XX Table width extender,a pair	√	√	√	√	√
115-079730-00	V03CX Upper back plate	-	-	-	√	√
115-079729-00	V03XX Upper back plate	-	-	-	√	√
115-084234-00	V01CX Cardiac operating plate,CF	-	-	-	√	√
115-030151-00	A81XX Accessory adaptor,CF	-	-	-	√	√
115-079671-00	A67CX Extension plate	-	-	-	√	√
115-079670-00	A67XX Extension plate	-	-	-	√	√
115-072051-00	A06XP Extension plate	-	√	√	-	-
115-072052-00	A06XX Extension plate,w/ MFP	-	√	√	-	-
115-081868-00	A04XX Back plate for shoulder operation	-	-	√	√	√
115-081869-00	A05XX Shoulder chair dolly	-	-	√	√	√
115-059315-00	A71XX Body strap for shoulder operation	-	-	-	√	√
115-079669-00	A66XX Back plate for shoulder operation	-	-	-	√	√
115-052219-00	Bow frame for spine operation	√	√	√	√	√
115-053654-00	A75XX Pad set for bow frame,a pair	√	√	√	√	√
115-053656-00	A76XX Foam head block stand of bow frame	√	√	√	√	√
115-052223-00	A74XX Bow frame disposable cover(6 sets)	√	√	√	√	√
115-052221-00	A73XX Bow frame cart	√	√	√	√	√

Accessories for Gynecology&Urology

CODE	ACCESSORIES	UniBase 30	HyBase 3000	HyBase 6100	HyBase V8 Classic	HyBase V8
115-093670-00	A29XX Advanced leg support,a pair	√	√	√	√	√
115-052205-00	A03XX Transfer board	-	√	√	√	√
115-062765-00	A62XX Standard stirrups,a pair	√	√	√	√	√
115-075117-00	A58XX Stirrup cart	√	√	√	√	√
115-005697-00	A70XX Drainage bowl,HyBase 6100	-	-	√	-	-
115-013018-00	301XX Drainage bowl	-	√	-	-	-
115-034318-00	A25XX Drainage bowl,universal	√	√	√	√	√
115-093658-00	A95XX Advanced body strap	√	√	√	√	√
115-093661-00	A16XX Multi-joint body support,a pair	√	√	√	√	√
115-093679-00	A93XX Multi-position arm board	√	√	√	√	√
115-047824-00	P22XX Lateral positioner	√	√	√	√	√
115-007049-00	A02XX Rectal positioning device	-	√	√	√	√

Orthopedic Accessories

CODE	ACCESSORIES	UniBase 30	HyBase 3000	HyBase 6100	HyBase V8 Classic	HyBase V8
115-081868-00	A04XX Back plate for shoulder operation	-	-	√	√	√
115-081869-00	A05XX Shoulder chair dolly	-	-	√	√	√
115-059315-00	A71XX Body strap for shoulder operation	-	-	-	√	√
115-093679-00	A93XX Multi-position arm board	√	√	√	√	√
115-079669-00	A66XX Back plate for shoulder operation	-	-	-	√	√
115-033413-00	A26XX Arthroscopic leg holder	√	√	√	√	√
115-033416-00	A27XX Meniscus positioning device	√	√	√	√	√
115-033421-00	A55XX Forearm extension device	√	√	√	√	√
115-033422-00	A56XX Upper arm extension device	√	√	√	√	√
115-007047-00	A40XX Arm operating table	√	√	√	√	√
115-033415-00	A39XX Upper arm support	√	√	√	√	√
115-087232-00	HyExtent-V CF w/ cart	-	√	√	√	√
115-087230-00	HyExtent-V w/cart,basic	-	√	√	√	√
115-087231-00	HyExtent-V w/cart,comfort	-	√	√	√	√
115-087236-00	A89XX Unilateral lithotomy position ASSY	-	√	√	√	√
115-087233-00	A86XX Tibia & fibula ASSY for HyExtent-V	-	√	√	√	√
115-087234-00	A87XX Lateral femur ASSY for HyExtent-V	-	√	√	√	√

Neurosurgery Accessories

CODE	ACCESSORIES	UniBase 30	HyBase 3000	HyBase 6100	HyBase V8 Classic	HyBase V8
DJ15-0101-301	Adult horseshoe headrest w.Ext	√	√	√	√	√
DJ15-0101-302	Pedia horseshoe headrest w.Ext	√	√	√	√	√
DJ15-0101-201	Titanium skull pin,adult(3pcs)	√	√	√	√	√
DJ15-0101-202	Titanium skull pin,pedia(3pcs)	√	√	√	√	√
DJ15-0101-203	Stainless steel skull pin,adult(3pcs)	√	√	√	√	√
DJ15-0101-204	Stainless steel skull pin,pedia(3pcs)	√	√	√	√	√
DJ15-0101-003	DORO LUCENT Headrest System	√	√	√	√	√
DJ15-0101-001	Aluminum headrest	√	√	√	√	√
DJ15-0101-101	Crossbar adaptor with clamps	√	√	√	√	√
115-052219-00	Bow frame for spine operation	√	√	√	√	√
115-053654-00	A75XX Pad set for bow frame,a pair	√	√	√	√	√
115-053656-00	A76XX Foam head block stand of bow frame	√	√	√	√	√
115-052223-00	A74XX Bow frame disposable cover(6 sets)	√	√	√	√	√
115-052221-00	A73XX Bow frame cart	√	√	√	√	√
115-097074-00	V01CX Cardiac operating plate w/ cart	-	-	-	√	√
115-030151-00	A81XX Accessory adaptor,CF	-	-	-	√	√
115-030153-00	A38XX Carbon fiber arm board,a pair	-	-	-	√	√

Accessories for Controlling and Easier Application

CODE	ACCESSORIES	UniBase 30	HyBase 3000	HyBase 6100	HyBase V8 Classic	HyBase V8
115-079752-00	V04XX Foot switch	-	-	-	√	√
0092-30-102644	A59XX Foot switch	-	√	√	-	-
115-079748-00	V05XX Assist drive handle	-	-	-	-	√
115-079749-00	V06XX Remote control module	-	-	-	√	√

Comfort Solution Accessories

CODE	ACCESSORIES	UniBase 30	HyBase 3000	HyBase 6100	HyBase V8 Classic	HyBase V8
115-005872-00	P34LX Head ring	√	√	√	√	√
115-005873-00	P34MX Head ring	√	√	√	√	√
115-005877-00	P34SX Head ring	√	√	√	√	√
115-005874-00	P09LX Paediatric head ring	√	√	√	√	√
115-005878-00	P09MX Paediatric head ring	√	√	√	√	√
115-005875-00	P09SX Paediatric head ring	√	√	√	√	√
115-005876-00	P32XX Infant head ring	√	√	√	√	√
115-005885-00	P16LX Horseshoe head ring	√	√	√	√	√
115-005886-00	P16MX Horseshoe head ring	√	√	√	√	√
115-005890-00	P16SX Horseshoe head ring	√	√	√	√	√
115-005887-00	P07LX Paediatric horseshoe head ring	√	√	√	√	√
115-005888-00	P07SX Paediatric horseshoe head ring	√	√	√	√	√
115-005889-00	P31XX Infant head ring	√	√	√	√	√
115-005896-00	P29LX Ophthalmic head pad	√	√	√	√	√
115-005897-00	P29MX Ophthalmic head pad	√	√	√	√	√
115-038076-00	P29SX Ophthalmic pad,paediatric	√	√	√	√	√
115-005898-00	P30XX Pillow for supine position	√	√	√	√	√
115-005864-00	P06XX Prone position pillow	√	√	√	√	√
115-005830-00	P11XX Prone position pillow	√	√	√	√	√
115-038074-00	P19XX Prone pillow,full support	√	√	√	√	√
115-038075-00	P08XX Paediatric prone pillow	√	√	√	√	√
115-005900-00	P26LX Universal Head Pad	√	√	√	√	√
115-005832-00	P26SX Universal Head Pad	√	√	√	√	√
115-005892-00	P25XX Universal supine pad	√	√	√	√	√
115-005811-00	P03LX Arm/leg pad	√	√	√	√	√
115-005812-00	P03SX Arm/leg pad	√	√	√	√	√
115-005910-00	P05XX Lateral positioner	√	√	√	√	√

CODE	ACCESSORIES	UniBase 30	HyBase 3000	HyBase 6100	HyBase V8 Classic	HyBase V8
115-005788-00	P10XX Pad for intervertebral disc	√	√	√	√	√
0092-30-102639	P02XX Pad for intervertebral disc Ops	√	√	√	√	√
115-038080-00	P33XX Prone position pad,hard inner	√	√	√	√	√
115-038077-00	P15XX Struma pad	√	√	√	√	√
115-083123-00	P12XX Heel pad	√	√	√	√	√
115-047824-00	P22XX Lateral positioner	√	√	√	√	√
115-005803-00	P35LX Short gel body roll	√	√	√	√	√
115-005807-00	P35MX Short gel body roll	√	√	√	√	√
115-005804-00	P35SX Short gel body roll	√	√	√	√	√
115-038079-00	P04XX Gel body roll, paediatric	√	√	√	√	√
115-005805-00	P17LX Long gel body roll	√	√	√	√	√
115-005808-00	P17MX Long gel body roll	√	√	√	√	√
115-005806-00	P17SX Long gel body roll	√	√	√	√	√
115-083122-00	P13XX Ankle protection strap	√	√	√	√	√
115-005796-00	P23XX Body strap	√	√	√	√	√
115-005908-00	P27XX Wrist protector	√	√	√	√	√
115-083121-00	P18XX Elbow protection strap	√	√	√	√	√
115-005820-00	P24LX Universal square pad	√	√	√	√	√
115-005819-00	P24MX Universal square pad	√	√	√	√	√
115-005818-00	P24SX Universal square pad	√	√	√	√	√
115-083144-00	P20LX Universal arm board pad	√	√	√	√	√
115-083143-00	P20SX Universal arm board pad	√	√	√	√	√
115-005790-00	P28XX Chest-hipbone pad	√	√	√	√	√
115-005794-00	P14XX Pad for countertraction post	√	√	√	√	√
115-038078-00	P01XX Universal hip pad	√	√	√	√	√
115-005826-00	P21XX Table pads,3 pieces	√	√	√	√	√

