

Transducer



ACUSON NX3 Elite

Ultrasound System

Table of Contents

Curved

CH5-2 Transducer	3
C8F3 Transducer	3
C8-5 Transducer	4

Linear

VF12-4 Transducer	4
VF13-5sp Transducer	5
VF16-5 Transducer	5
11L4 Transducer ¹	6

Phased

P8-4 Transducer	6
P4-2 Transducer	7

Endocavity

EC9-4 Transducer	7
EC10-5w Transducer	8
BP10-3 Transducer	8
10MC3 Transducer ¹	9

Non-Imaging

CW2 Transducer	9
CW5 Transducer	10

TEE

V5Ms Transducer	10
-----------------------	----

¹ Pending 510k Clearance. Not Available in USA.



CH5-2 Transducer

Frequency Bandwidth:	1.4-5.0 MHz
Selectable 2D Frequencies:	2.5, 3.6, 5.0 MHz
Selectable THI (TEI) Frequencies:	3.1, 3.6, 4.4, 5.0 MHz
Selectable Color Doppler Frequencies:	2.0, 2.7, 3.3 MHz
Selectable Pulsed Wave Frequencies:	2.0, 2.7, 3.3 MHz
Number of Elements:	128
Footprint:	61.1 mm
Maximum Field of View:	66°
Maximum Display Depth:	300 mm
Biopsy Guide Kit:	Needle Guide Kit
Biopsy Guide Angles:	45°(A), 30.5°(B)
Compatible with:	ACUSON X300 ultrasound system, premium edition (PE)
Exam Types:	Obstetrics, Early Obstetrics, Abdomen, Renal, Pelvis, Emergency Medicine
Intended Applications:	Obstetrics, Early Obstetrics, Abdomen, Renal, Pelvis, Emergency Medicine, Musculoskeletal, Vascular, Lung
Design Attributes:	<ul style="list-style-type: none"> • Wide bandwidth curved array transducer • Hanafy lens transducer technology • User-selectable MultiHertz multiple frequency imaging • Ergonomically designed form factor • Lightweight transducer with flexible cable



C8F3 Transducer

Frequency Bandwidth:	2.0-7.0 MHz
Number of Elements:	128
Footprint:	47.9 mm
Maximum Field of View:	67°
Maximum Display Depth:	300 mm
Biopsy Guide:	Not available
Compatible with:	ACUSON X600 ultrasound system
Exam Types:	Abdomen, Early Obstetrics, Fetal Echo, Gynecology, Obstetrics, Pelvic Floor
Design Attributes:	<ul style="list-style-type: none"> • Curved Vector Format • Wide bandwidth curved array transducer • User-selectable MultiHertz imaging • Ergonomically designed form factor • Lightweight transducer with flexible cable



C8-5 Transducer

Frequency Bandwidth:	3.1-8.8 MHz
Number of Elements:	160
Footprint:	25.6 mm
Maximum Field of View:	109°
Maximum Display Depth:	140 mm
Biopsy Guide:	Not available
Compatible with:	ACUSON X700 ultrasound system ACUSON X300 ultrasound system, premium system (PE)
Exam Types:	Cerebrovascular, Neonatal Head, Pediatric Abdomen, Pediatric Echo
Design Attributes:	<ul style="list-style-type: none"> • Wide bandwidth micro-curved array transducer • User-selectable MultiHertz imaging • Ergonomically designed form factor • Lightweight transducer with flexible cable



VF12-4 Transducer

Frequency Bandwidth:	4.0-12.0 MHz
2D Steering Angle:	max. ± 15°
Color Doppler Steering Angle:	max. ± 15°
PW Doppler Steering Angle:	max. ± 15°
Number of Elements:	192
Footprint:	51.3 mm
Maximum Field of View:	153 mm
Maximum Display Depth:	160 mm
Biopsy Guide:	Biopsy Guide Start Set Biopsy Guide Bracket
Biopsy Guide Angle:	48°
Compatible with:	ACUSON X700 ultrasound system ACUSON X600 ultrasound system
Exam Types:	Breast, Cerebrovascular, Emergency Medicine, Musculoskeletal, Orthopedics, Peripheral Vascular, Small Parts, Testicle, Thyroid, Venous
Design Attributes:	<ul style="list-style-type: none"> • Wide bandwidth long linear transducer • Virtual format imaging • Hanafy lens transducer technology



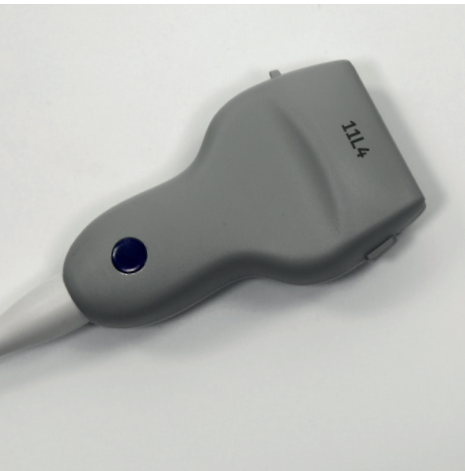
VF13-5SP Transducer

Frequency Bandwidth:	4.3-13.0 MHz
Selectable 2D Frequencies:	7.3, 8.9, 11.4 MHz
Selectable THI Frequencies:	9.4, 10.7, 11.4 MHz
Selectable Color Doppler Frequencies:	6.2, 7.3 MHz
Selectable PW Doppler Frequencies:	6.2, 7.3 MHz
2D Steering Angle:	max. $\pm 12^\circ$
Color Doppler Steering Angle:	max. $\pm 12^\circ$
PW Doppler Steering Angle:	max. $\pm 12^\circ$
Number of Elements:	128
Footprint:	13 mm x 35 mm
Array Length:	25.6 mm
Maximum Field of View:	49 mm
Maximum Display Depth:	60 mm
Biopsy Guide:	Not available
Compatible with:	ACUSON X300 ultrasound system, premium edition (PE) ACUSON X300 ultrasound system
Exam Types:	Breast, Cerebrovascular, Intraoperative, Musculoskeletal, Superficial Musculoskeletal, Superficial Vascular, Testicle, Thyroid, Venous
Design Attributes:	<ul style="list-style-type: none"> • Wide bandwidth linear transducer • Virtual format imaging • User-selectable MultiHertz imaging • Ergonomically designed form factor • Lightweight transducer with flexible cable



VF16-5 Transducer

Frequency Bandwidth:	5.0-16.0 MHz
Number of Elements:	192
Footprint:	34.8 mm
Maximum Display Depth:	60 mm
Biopsy Guide:	Biopsy Guide Starter Set
Biopsy Guide Angle:	Free angle
Compatible with:	ACUSON X700 ultrasound system
Exam Types:	Breast, Cerebrovascular, Emergency Medicine, Musculoskeletal, Penile, Testicle, Thyroid
Design Attributes:	<ul style="list-style-type: none"> • Wide bandwidth linear transducer • Virtual format imaging • Hanafy lens transducer technology



11L4 Transducer

Frequency Bandwidth:	3.7-13.1 MHz
Selectable 2D Frequencies:	6.2, 8.0, 10.0 MHz
Selectable THI (TEI) Frequencies:	7.3, 8.0, 9.4 MHz
Selectable Color Doppler Frequencies:	4.0, 5.3, 6.2 MHz
Selectable Pulsed Wave Frequencies:	4.0, 5.3, 6.2 MHz
Selectable M-mode Frequencies:	6.2, 8.0, 10.0 MHz
Selectable Continuous Wave Frequencies:	Not available
Number of Elements:	128
Footprint:	38.4 mm
Maximum Field of View:	101 mm
Maximum Display Depth:	10 cm
Biopsy Guide Kit:	Biopsy Guide Starter Set
Biopsy Guide Angles:	39°, 51°
Compatible with:	ACUSON NX3 R2.0
Exam Types:	Breast, C-Vascular, Emergency Medicine, Orthopedics, P-Vascular, Testicle, Thyroid, Venous
Design Attributes:	<ul style="list-style-type: none"> • Wide bandwidth linear transducer • Virtual format imaging • User-selectable MultiHertz imaging • Ergonomically designed form factor • 2D beam steering • Lightweight transducer with flexible cable



P8-4 Transducer

Frequency Bandwidth:	4.0-8.0 MHz
Number of Elements:	64
Footprint:	9.6 mm
Maximum Field of View:	90°
Maximum Display Depth:	140 mm
Biopsy Guide:	Not available
Compatible with:	ACUSON X700 ultrasound system ACUSON X300 ultrasound system, premium edition (PE)
Exam Types:	Cerebrovascular, Neonatal Head, Pediatric Abdomen, Pediatric Echo
Design Attributes:	<ul style="list-style-type: none"> • Wide bandwidth phased array transducer • User-selectable MultiHertz imaging • Ergonomically designed form factor • Lightweight transducer with flexible cable



P4-2 Transducer

Frequency Bandwidth:	1.3-4.4 MHz
Selectable 2D Frequencies:	2.0, 2.5, 2.9, 3.1, 3.6 MHz
Selectable THI (TEI) Frequencies:	2.7, 3.0, 3.1, 3.4, 3.6, 4.0 MHz
Selectable Color Doppler Frequencies:	2.0, 2.2, 2.5, 3.3 MHz
Selectable Pulsed Wave Frequencies:	2.0, 2.2, 2.5, 3.3 MHz
Selectable Continuous Wave Frequencies:	2.0 MHz
Number of Elements:	64
Footprint:	14 mm × 16.6 mm
Maximum Field of View:	90°
Maximum Display Depth:	300 mm
Biopsy Guide Kit:	Not available
Biopsy Guide Angles:	Not available
Compatible with:	ACUSON X300 ultrasound system, premium edition (PE)
Exam Types:	Obstetrics, Abdomen, Emergency Medicine
Intended Applications:	Obstetrics, Abdomen, Cardiac, Emergency Medicine (Cardiac)
Design Attributes:	<ul style="list-style-type: none"> • Wide bandwidth phased array transducer • User-selectable MultiHertz imaging • Ergonomically designed form factor • Lightweight transducer with flexible cable



EC9-4 Transducer

Frequency Bandwidth:	3.3-10.3 MHz
Selectable 2D Frequencies:	5.0, 6.7, 7.3 MHz
Selectable THI (TEI) Frequencies:	5.7, 6.6, 9.4 MHz
Selectable Color Doppler Frequencies:	4.0, 5.3, 6.2 MHz
Selectable Pulsed Wave Frequencies:	4.0, 5.3, 6.2 MHz
Number of Elements:	128
Footprint:	26.2 mm
Maximum Field of View:	126°
Maximum Display Depth:	140 mm
Biopsy Guide Kit:	Reusable Needle Guide Set
Biopsy Guide Angles:	2°
Compatible with:	ACUSON X300 ultrasound system, premium edition (PE)
Exam Types:	Obstetrics, Early Obstetrics, Gynecology, Emergency Medicine
Intended Applications:	Obstetrics, Early Obstetrics, Gynecology, Emergency Medicine, Gynecology/Prostate
Design Attributes:	<ul style="list-style-type: none"> • User-selectable MultiHertz imaging • Ergonomically designed form factor • Lightweight transducer with flexible cable



EC10-5w Transducer

Frequency Bandwidth:	4-10 MHz
Selectable 2D Frequencies:	5.7, 8.0, 10.0 MHz
Selectable THI Frequencies:	5.6, 7.6, 9.4 MHz
Selectable Color Doppler Frequencies:	4.2, 5.3 MHz
Selectable Pulsed Wave Frequencies:	4.2, 5.3 MHz
Number of Elements:	192
Footprint:	36 mm
Maximum Field of View:	220°
Maximum Display Depth:	140 mm
Biopsy Guide Kit:	Reusable Needle Guide Disposable Needle Guide, 5 pack Disposable Needle Guide, 24 pack
Biopsy Guide Angles:	0°
Exam Types:	Early Obstetrics, Obstetrics, Gynecology, Urology
Intended Applications:	Obstetrics, Early Obstetrics, Gynecology, Emergency Medicine, Prostate
Design Attributes:	<ul style="list-style-type: none"> • User-selectable MultiHertz imaging • Ergonomically designed factor • Lightweight transducer with flexible cable • Wide FOV imaging



BP10-3 Transducer

Frequency Bandwidth:	2.6~9.9 MHz
Selectable 2D Frequencies:	5.0, 6.7, 8.0 MHz
Selectable THI (TEI) Frequencies:	7.2, 8.0, 8.8 MHz
Selectable Color Doppler Frequencies:	4.4, 5.3 MHz
Selectable Pulsed Wave Frequencies:	4.4, 5.3 MHz
Selectable M-mode Frequencies:	5.0, 6.7, 8.0 MHz
Selectable Continuous Wave Frequencies:	Not available
Number of Elements:	128
Footprint:	25.6 × 4.3 mm
Maximum Field of View:	166°
Maximum Display Depth:	140 mm
Biopsy Guide Kit:	Reusable Needle Guide Disposable Needle Guide, 5 pack Disposable Needle Guide, 24 pack
Biopsy Guide Angles:	29°
Compatible with:	ACUSON NX3 R2.0
Exam Types:	Urology
Intended Applications:	Prostate, Urology
Design Attributes:	<ul style="list-style-type: none"> • Wide bandwidth curved array transducer • User-selectable MultiHertz imaging • Ergonomically designed form factor • Lightweight transducer with flexible cable • Live Bi-Plane imaging and biopsy



10MC3 Transducer

Frequency Bandwidth:	3.3~10.3 MHz
Selectable 2D Frequencies:	5.0, 6.2, 7.3 MHz
Selectable THI (TEI) Frequencies:	6.7, 7.3, 8.0, 9.4 MHz
Selectable Color Doppler Frequencies:	4.0, 5.3, 6.2 MHz
Selectable Pulsed Wave Frequencies:	4.0, 5.3, 6.2 MHz
Selectable M-mode Frequencies:	5.0, 6.2, 7.3 MHz
Selectable Continuous Wave Frequencies:	Not available
Number of Elements:	128
Footprint:	27.4 mm
Maximum Field of View:	130°
Maximum Display Depth:	14 cm
Biopsy Guide Kit:	NX2, 10MC3 Needle Guide Set
Biopsy Guide Angles:	1.3°
Compatible with:	ACUSON NX3 R2.0
Exam Types:	Early Obstetrics, Gynecology, Obstetrics, Obstetrics Japan, Urology
Intended Applications:	Early Obstetrics, Gynecology, Obstetrics, Obstetrics Japan, Urology
Design Attributes:	<ul style="list-style-type: none"> • User-selectable MultiHerz imaging • Ergonomically designed form factor • Lightweight transducer with flexible cable



CW2 Transducer

Selectable CW Doppler Frequencies:	2.0 MHz
Number of Elements:	2
Diameter:::	17 mm
Biopsy Guide:	Not available
Compatible with:	ACUSON S3000 ultrasound system ACUSON S2000 ultrasound system ACUSON S1000 ultrasound system ACUSON X700 ultrasound system ACUSON X600 ultrasound system ACUSON X300 ultrasound system, premium edition (PE) ACUSON X300 ultrasound system
Exam Types:	Adult Echo, Pediatric Echo



CW5 Transducer

Selectable CW Doppler Frequencies:	5.0 MHz
Number of Elements:	2
Diameter:	11 mm
Biopsy Guide:	Not available
Compatible with:	ACUSON S3000 ultrasound system ACUSON S2000 ultrasound system ACUSON S1000 ultrasound system ACUSON X700 ultrasound system ACUSON X600 ultrasound system ACUSON X300 ultrasound system, premium edition (PE) ACUSON X300 ultrasound system
Exam Types:	Cerebrovascular, Pediatric Echo



V5Ms Transducer

Frequency Bandwidth:	2.7~9.0 MHz
Selectable 2D Frequencies:	4.0, 5.7 MHz
Selectable THI (TEI) Frequencies:	6.2 MHz
Selectable Color Doppler Frequencies:	3.6 MHz
Selectable Pulsed Wave Frequencies:	3.6 MHz
Selectable M-mode Frequencies:	4.0, 5.7 MHz
Selectable Continuous Wave Frequencies:	3.6 MHz
Number of Elements:	64
Maximum Field of View:	87°
Maximum Display Depth:	180 mm
Biopsy Guide Kit:	Not available
Biopsy Guide Angles:	Not available
Compatible with:	ACUSON X300 ultrasound system, premium edition (PE) (with converter) ACUSON X700 ultrasound system ACUSON NX3 R2.0 (with converter)
Exam Types:	Transesophageal Echo
Intended Applications:	Transesophageal Echo
Design Attributes:	<ul style="list-style-type: none"> • Wide bandwidth transesophageal transducer • Endoscope diameter = 10.5 mm, length = 11.0 mm • Adult tip size: width = 14.5 mm, height = 11.5 mm • Ergonomic design featuring one-hand control with variable speed rotation – 90° per sec. • RF shielding • User-selectable MultiHertz imaging

The products/features mentioned in this document may not be commercially available in all countries. Due to regulatory reasons their future availability cannot be guaranteed. Please contact your local Siemens Healthineers organization for further details.

ACUSON, ACUSON S1000, ACUSON S2000, ACUSON S3000, ACUSON NX3, ACUSON X300, ACUSON X600, ACUSON X700, and MultiHertz are trademarks of Siemens Medical Solutions USA, Inc.

Siemens Healthineers Headquarters

Siemens Healthcare GmbH
Henkestr. 127
91052 Erlangen, Germany
Phone: +49 913184-0
siemens.com/healthineers

Legal Manufacturer

Siemens Medical Solutions USA, Inc.
Ultrasound
685 East Middlefield Road
Mountain View, CA 94043
USA
Phone: 1-888-826-9702
siemens.com/ultrasound