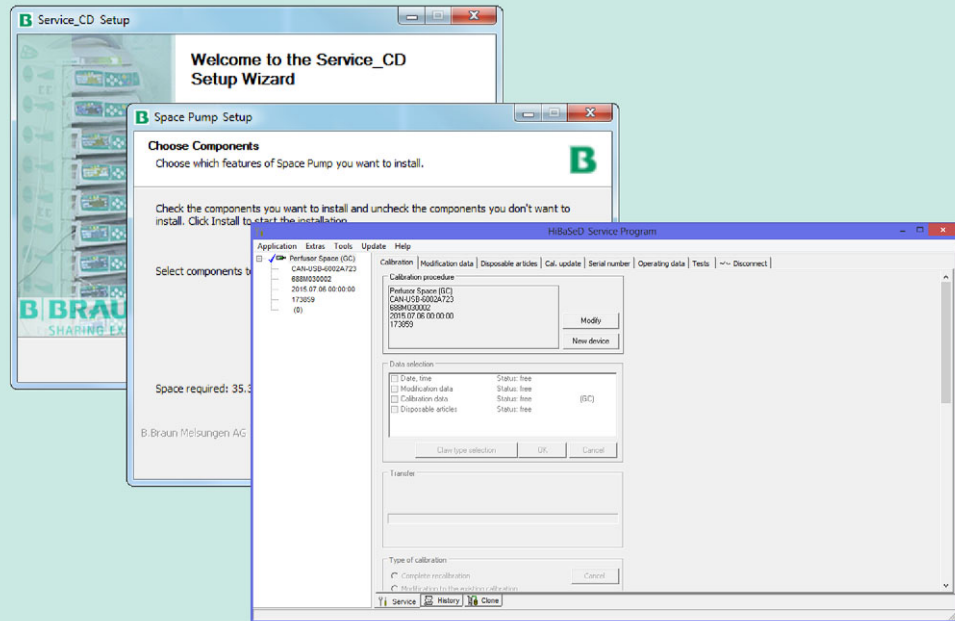


HiBaSeD

Installation and Instruction Manual



Version 1.0 English for HiBaSeD Version 9.0

Corresponding pump software M

General controls

The following control elements are located on various tab cards of the "History" application type. The control element always applies to the data on the currently active tab card.

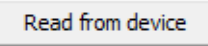


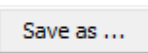

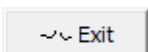

Button	Function	Button	Function
	Read the history data.		Clear data.
	Send the history data to the clipboard.		Save a history data file.
	Export the history data to a spreadsheet.		Disconnect the selected device.
	Print the history data.		

Table 7 - 1

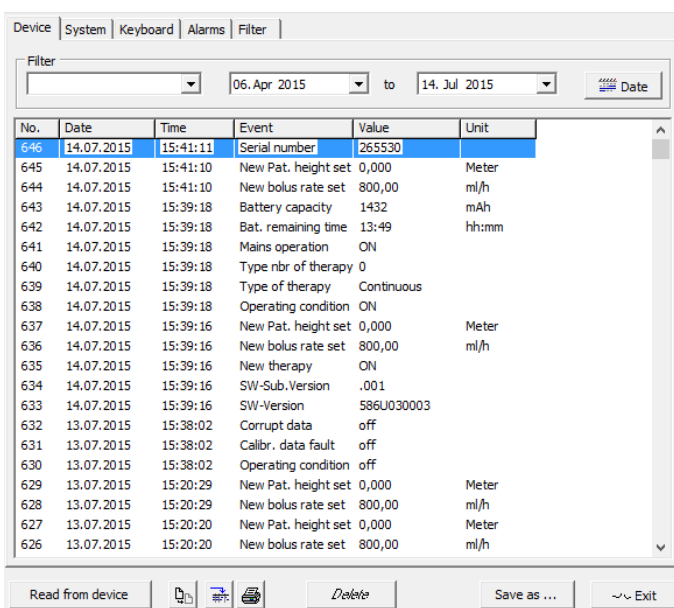
Device

Listing the device history

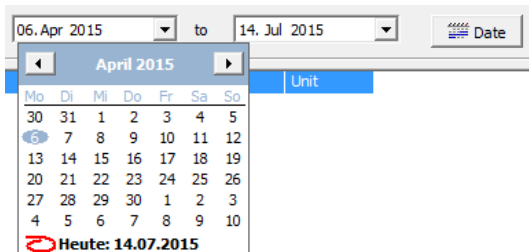
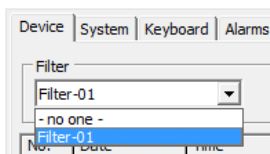
1. Select the "Device" tab card, if necessary.
2. Click "Read from device".

The device history is listed in chronological order.

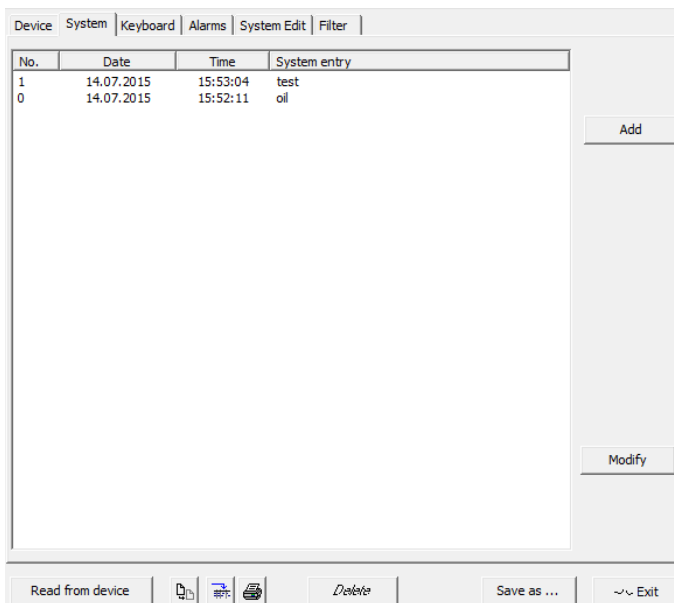
- **No.**
Consecutive number
- **Date**
Date of entry
- **Time**
Time of entry
- **Event**
Type of entry
- **Value**
Value of entry
- **Unit**
Unit of entry



No.	Date	Time	Event	Value	Unit
646	14.07.2015	15:41:11	Serial number	265530	
645	14.07.2015	15:41:10	New Pat. height set	0,000	Meter
644	14.07.2015	15:41:10	New bolus rate set	800,00	ml/h
643	14.07.2015	15:39:18	Battery capacity	1432	mAh
642	14.07.2015	15:39:18	Bat. remaining time	13:49	hh:mm
641	14.07.2015	15:39:18	Mains operation	ON	
640	14.07.2015	15:39:18	Type nbr of therapy	0	
639	14.07.2015	15:39:18	Type of therapy	Continuous	
638	14.07.2015	15:39:18	Operating condition	ON	
637	14.07.2015	15:39:16	New Pat. height set	0,000	Meter
636	14.07.2015	15:39:16	New bolus rate set	800,00	ml/h
635	14.07.2015	15:39:16	New therapy	ON	
634	14.07.2015	15:39:16	SW-Sub.Version	.001	
633	14.07.2015	15:39:16	SW-Version	586U030003	
632	13.07.2015	15:38:02	Corrupt data	off	
631	13.07.2015	15:38:02	Calibr. data fault	off	
630	13.07.2015	15:38:02	Operating condition	off	
629	13.07.2015	15:20:29	New Pat. height set	0,000	Meter
628	13.07.2015	15:20:29	New bolus rate set	800,00	ml/h
627	13.07.2015	15:20:20	New Pat. height set	0,000	Meter
626	13.07.2015	15:20:20	New bolus rate set	800,00	ml/h



System



Applying filters

Valid filters are shown in the filter drop-down list.

1. Select a filter from the drop down-list.
2. If the available filter criteria do not meet your requirements, create your own filter first (see "Filter" → pg. 7 - 7).

Time range

1. Set the date for the first entry in the date selection field.
2. Set the date for the last entry in the date selection field.
3. To reset to the start date and end date of the device history (update range), click "Date".

Listing the system history

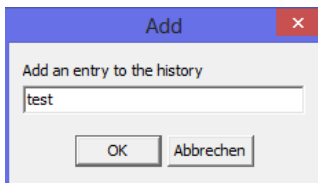
NOTICE

IMPORTANT: The device must be switched on to work with the "System" and "System Edit" tab cards.

1. Switch the device on, if necessary.
2. Select the "System" tab card.
3. Click "Read from device".

The system history is listed in chronological order.

- **No.**
Consecutive number
- **Date**
Date of entry
- **Time**
Time of entry
- **System entry**
Manual entry of event



Adding system history entries

1. Click "Add"
The "Add" dialog box opens.
 2. Enter the data that you want to add to the system history of the pump.
 3. Click "OK" to transmit your data to the pump. Your entry will be added to the system history.
- Or
- Click "Cancel" to discard your entry.

Modifying system history entries

1. Click "Modify"
The "System Edit" tab card is displayed.
2. Add new entries or modify or remove existing entries from the system history.

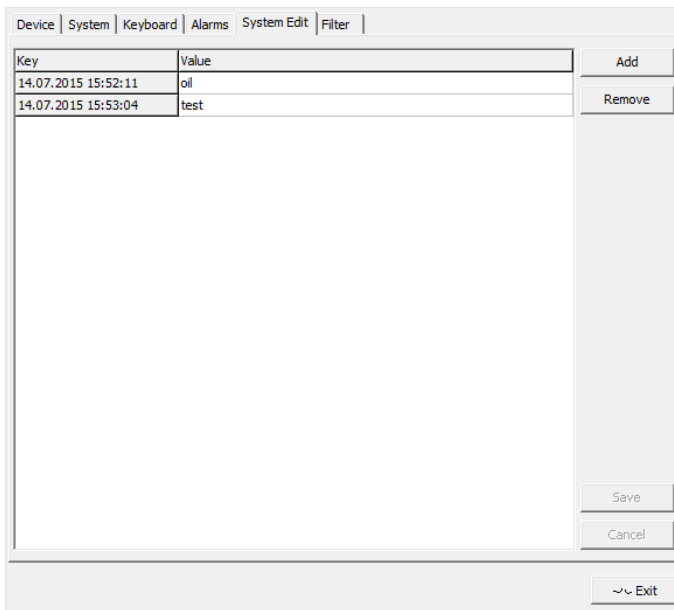
"System Edit" allows you to change, add or remove system history data.

NOTICE

IMPORTANT: The device must be switched on to work with the "System" and "System Edit" tab cards.

1. Switch the device on, if necessary.
2. Read the system history from the device, if necessary (see ["Listing the system history" ➔ pg. 7 - 3](#)).
3. Select the "System Edit" tab card.
The system history entries of the "System" tab card are listed.

System Edit



Adding an entry

1. Click "Add".

The "Add" dialog box opens.

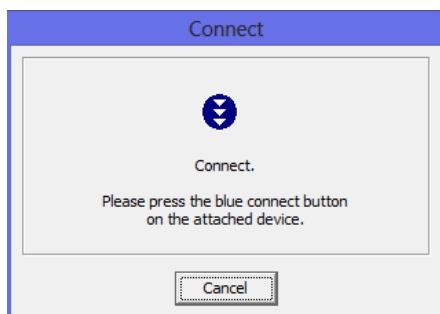
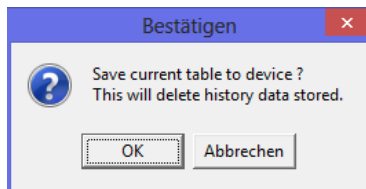
2. Enter the data that you want to add to the system history of the pump and confirm with "OK" (see "Adding an entry" → pg. 7 - 5).

Removing an entry

1. Select an entry from the list.
2. Click "Remove".

Sending your modified data to the selected pump

1. Click "Save".
2. Click "OK" in the confirmation window displayed.



As another security feature, you are now asked to press the blue "Connect" button on the attached device.

3. Press the "Connect" button on the selected pump.
The stored history data of the pump will now be overwritten.
"Cancel" will discard all your changes.

Keyboard

No.	Date	Time	Key	Menu
199	14.07.2015	15:51:51	CC	TURN_PUMP_OFF_REQ
198	14.07.2015	15:48:41	OK	ERROR
197	14.07.2015	15:48:38	Start/stop	LANDING_PAGE
196	14.07.2015	15:48:21	OK	ERROR
195	14.07.2015	15:48:18	Arrow down	LANGSELECTREQ
194	14.07.2015	15:48:16	OK	LANGSELECTREQ
193	14.07.2015	15:48:14	OK	LANGSELECT
192	14.07.2015	15:48:11	OK	ERROR
191	14.07.2015	15:48:06	Start/stop	LANGSELECT
190	14.07.2015	15:39:05	On/off	SWITCHEDOFF
189	13.07.2015	11:29:43	On/off	SWITCHEDOFF
188	13.07.2015	11:29:32	On/off	ERROR
187	13.07.2015	11:29:20	Clear	ERROR
186	13.07.2015	11:29:17	Start/stop	ERROR
185	13.07.2015	11:29:16	OK	ERROR
184	13.07.2015	11:29:14	OK	ERROR
183	13.07.2015	11:29:13	Arrow down	ERROR
182	13.07.2015	11:29:12	Arrow up	ERROR
181	13.07.2015	11:28:47	On/off	SWITCHEDOFF
180	10.07.2015	12:32:56	OK	ERROR
179	10.07.2015	12:32:51	Arrow down	LANGSELECTREQ
178	10.07.2015	12:32:49	OK	LANGSELECT
177	10.07.2015	12:32:46	Arrow up	LANGSELECTREQ
176	10.07.2015	12:32:43	OK	LANGSELECTREQ
175	10.07.2015	12:32:41	OK	LANGSELECT
174	10.07.2015	12:32:14	On/off	SWITCHEDOFF
173	10.07.2015	12:22:21	OK	ERROR
172	10.07.2015	12:22:19	Arrow up	ERROR

Listing the keyboard history

1. Select the "Keyboard" tab card.
2. Click "Read from device".

The keyboard history is listed in chronological order.

- **No.**
Consecutive number
- **Date**
Date of entry
- **Time**
Time of entry
- **Key**
Active key
- **Menu**
Active menu

Alarms

No.	Date	Time	Alarm	Text
0	14.04.2015	10:03:10	2010	X86M030028 RICOSWST6 1704 C=40 Adr=24b252

Listing the device alarm history

1. Select the "Alarms" tab card.
2. Click "Read from device".

The alarm history is listed in chronological order.

- **No.**
Consecutive number
- **Date**
Date of entry
- **Time**
Time of entry
- **Alarm**
Number of alarm
- **Text**
Text of alarm