

IMAGE1 S CONNECT™,
connect module, for use with up to 3 link modules, resolution 1920 x 1080 pixels, with integrated KARL STORZ-SCB and digital Image Processing Module, power supply 100 – 120 VAC/200 – 240 VAC, 50/60 Hz
including:
400 A Mains Cord, length 300 cm
20040089 DVI-D Connecting Cable, length 300 cm
20090170 SCB Connecting Cable, length 100 cm
20040282 USB Flash Drive, 32 GB
20040240US USB Silicone Keyboard, with touchpad, US



TC 300



IMAGE1 S™ H3-LINK,

link module, for use with IMAGE1 FULL HD three-chip camera heads, power supply 100 – 120 VAC/200 – 240 VAC, 50/60 Hz, for use with IMAGE1 S CONNECT™ TC 200EN

including:

- | | |
|--------|---------------------------|
| 400 A | Mains Cord, length 300 cm |
| TC 011 | Link Cable, length 20 cm |



400 A



TC 011

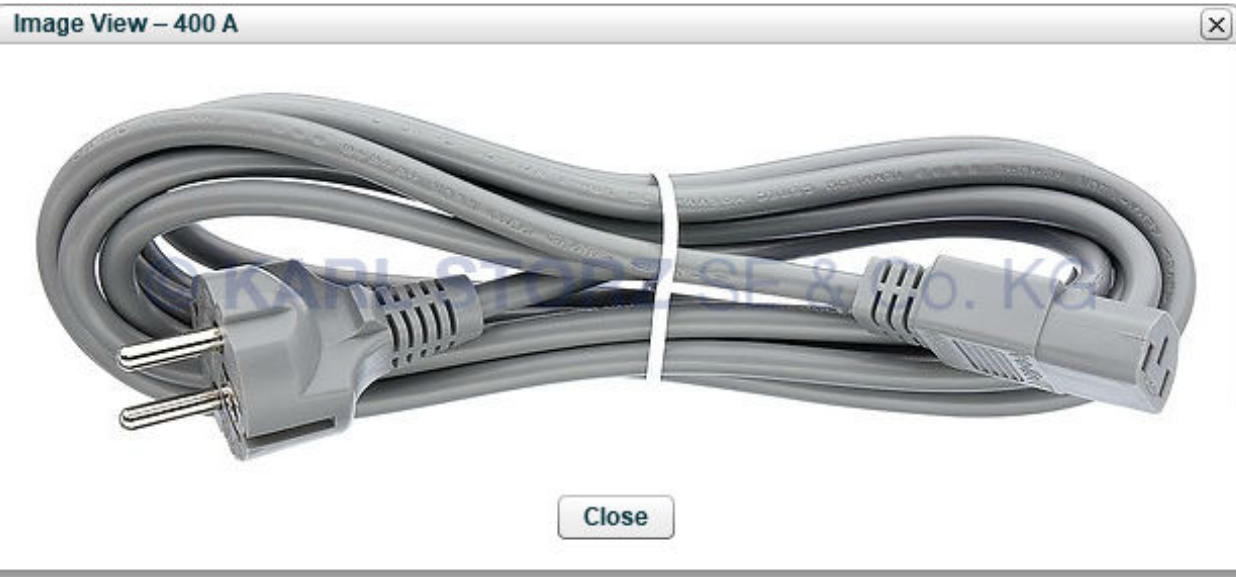
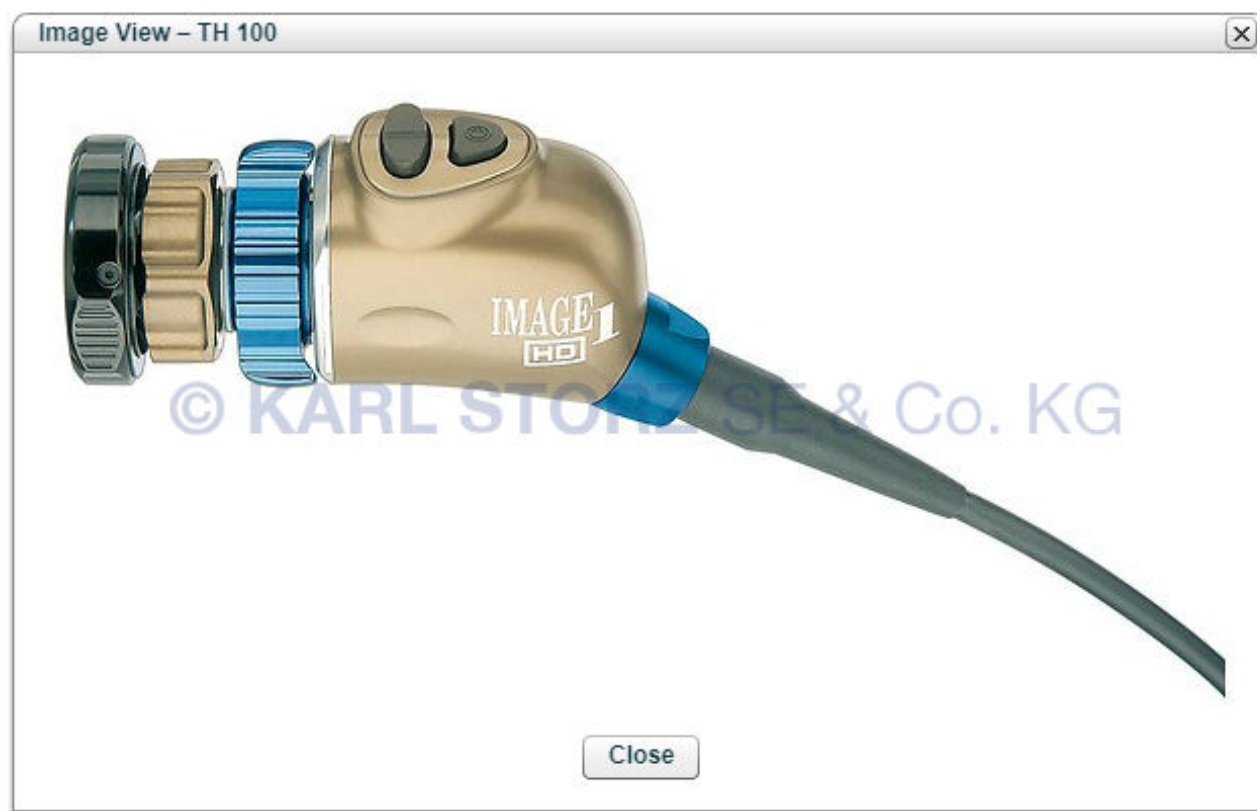




IMAGE1 S™ H3-Z Three-Chip FULL HD Camera Head,
50/60 Hz, S-Technologies available, progressive scan, soakable, EO sterilization, H₂O₂ (hydrogen peroxide), with integrated Parfocal Zoom Lens, focal length $f = 15 - 31$ mm (2x), 2 freely programmable camera head buttons, for use with IMAGE1 S™ and IMAGE 1 HUB™ HD/IMAGE1 HD



Product Details

Occurrences

495 NA



Fiber Optic Light Cable,
with straight connector, diameter 3.5 mm, length 230 cm

Image View – 495 NA



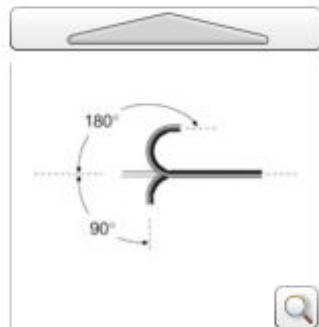
Close

Image View – 495 NA



Close

11101 SK



27677 RR



Rhino-Laryngo-Fiberscope,

deflection up/down 180°/90°, direction of view 0°, angle of view 90°, distal tip outer diameter 2.5 mm, working length 27 cm

Following accessories are included:

27677 RR	Case
11025 E	Pressure Compensation Cap
13242 XL	Leakage Tester



Rigid Esophagoscopy for Children with Proximal Illumination – Basic Set	6
Units for Thoracic Surgery, Bronchoscopy and Esophagoscopy – Basic Set	7
Medical Thoracoscopy – Basic Set	8
Units for Thoracic Surgery – Basic Set	9
Video-Assisted Thoracoscopic Surgery (VATS) – Basic Set	10
Video-Assisted Sympathectomy – Basic Set	11
	12

**Battery Light Source LED for Endoscopes,**

rechargeable, with click connection, boost mode for temporary increase in brightness, color temperature 5500 K, lithium-ion batteries, charging time 60 min, burning time at 100% brightness 40 min, weight approx. 150 g, suitable for wipe disinfection

Image View – 11301 DE

[Close](#)



Charging Unit,

for two LED battery light sources, with fixed integrated power supply and adaptor for EU, UK, USA and Australia, power supply 110 – 240 VAC, 50/60 Hz, suitable for wipe disinfection, for use with Battery Light Source LED 11301 DE/DF

094127



Mains Cord,
for Battery Charger 094129, length 150 cm



094129



Battery Charger Li-Ion,

for charging Rechargeable Battery Box 094124 or LED Battery Light Source 11301 DE/DF, for use with Mains Cord 094127 (EU connection only), power supply 100 – 240 VAC, 50/60 Hz



UG 500



Monitor Holder,
height adjustable, swiveling and tilting, central mount, swivel range approx. 360°, loading capacity max. 18 kg, with monitor mount VESA 75/100, for use with Equipment Carts UGxxx

Image View – UG 500



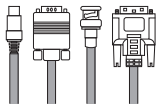
Close

32" High-Bright Medical Display

FS-L3202D



FSN's 32 inch HD medical-grade monitor features a large viewing area, yet is within the requirements of most boom mounting systems. Picture-in-picture or picture-by-picture screen layouts can be fully adjusted for size and position, giving surgeons the flexibility to work with video images tailored to their preference. FS-L3202D is designed without an internal fan. This eliminates the spread of contaminants and makes the monitor perfectly suited for the sterile field in an operating room.



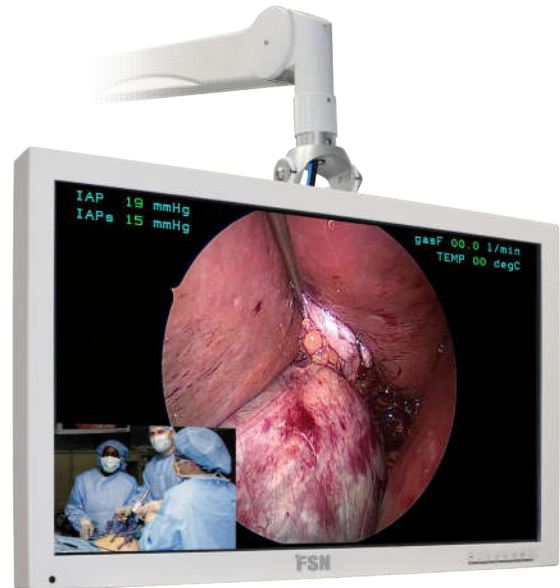
Input & Output Selection

FS-L3202D comes standard with extensive compatibility already built in. Connections are available for a vast array of video signals (digital and analog) including DVI-D, 3G-SDI, SOG, VGA, C-Video, S-Video, and Component. This means that it can adapt to different applications without having to buy extra equipment.



Source Compatibility

With a full range of signal timing tables, FS-L3202D offers ultra-fast video signal detection.

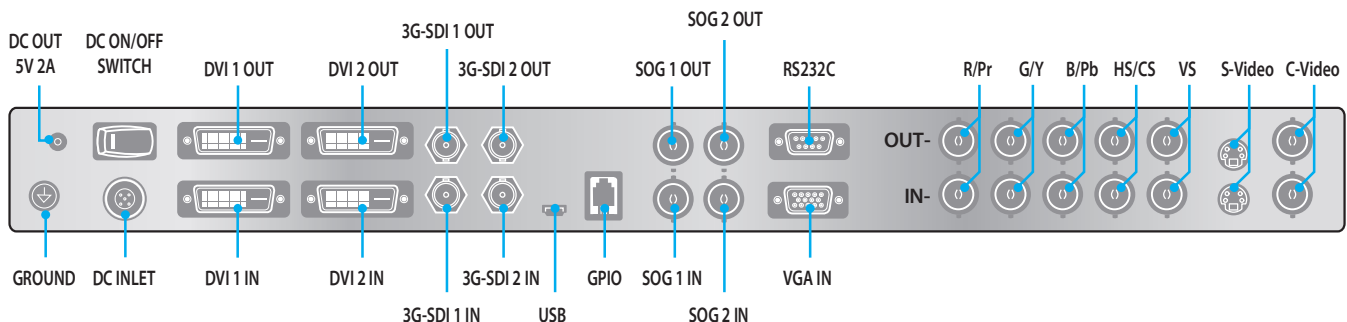


This monitor offers superior color reproduction, and displays exact visualization of critical anatomy being captured by the camera. It provides surgeons with the images needed for multi-specialty procedures, all while being compatible with all popular endoscopy systems.



Attention to Detail

This unit comes with design enhancements that improve workflow in a medical operating room environment. A handheld remote control is included. DC power is available near the video in/out connections to support smaller components such as fiber optic receivers. FS-L3202D reduces cable clutter with its back cover attachment.



www.fsnmed.com

Foreseeson Custom Displays, Inc.
2210 E. Winston Road
Anaheim, CA 92806 USA
Tel: 714-300-0540
Fax: 714-300-0546

San Jose, CA Tel: 714-507-3851
Fort Lee, NJ Tel: 714-507-3852

Foreseeson Korea
404B, PangyoInnovallway B
253 Pangyo-ro
Bundang-gu Seongnam-si
Gyeonggi-do, Korea 463-400
Tel: +82-31-8018-0780
Fax: +82-31-8018-0786

Foreseeson GmbH
Industriestrasse 38a
63150 Heusenstamm, Germany
Tel: +49 6104 64398 0
Fax: +49 6104 64398 11

Foreseeson UK Ltd.
Unit 71 Barwell Business Park
Leatherhead Road
Chessington, Surrey KT9 2NY
Tel: +44 (0) 208 546 1047

Foreseeson (Shanghai)
Medical Equipment Co., Ltd.
Room 307, 3F
No. 56, 461 Hongcao Road
Caohejing Development District
Xuhui, Shanghai 200233
Tel: 86-21-6113-4188

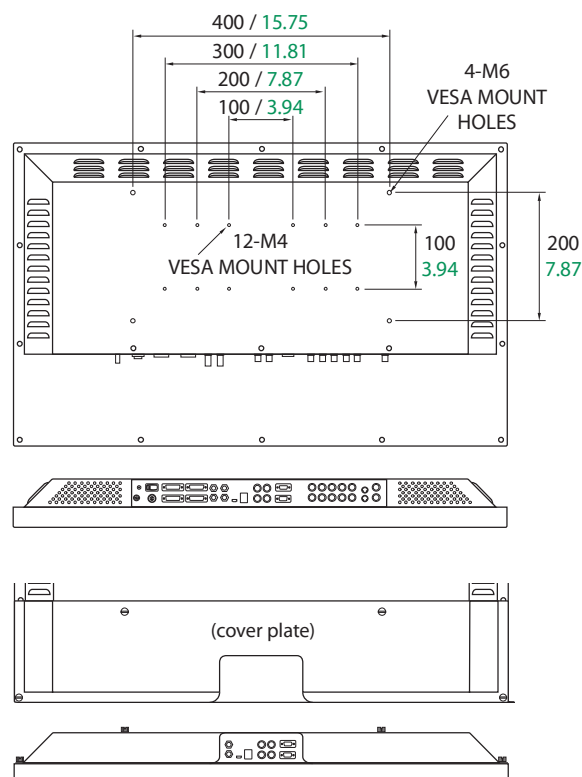
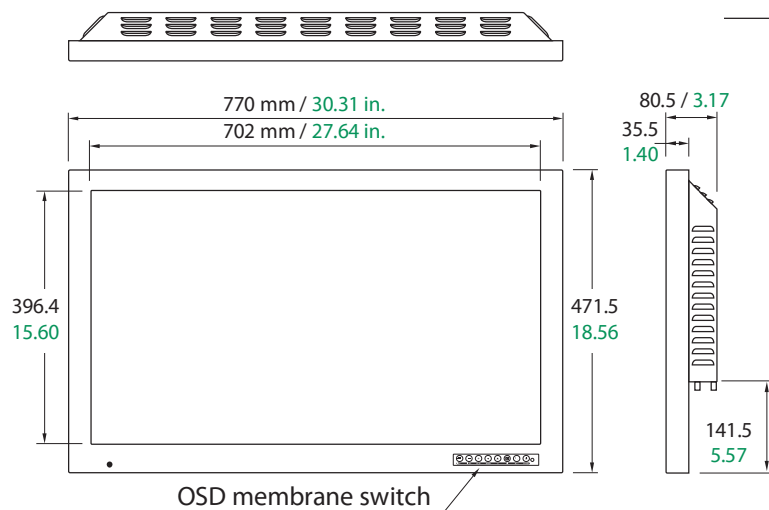
FS-L3202D

Specifications

General Features

Item	Description
Panel	32 inch TFT LCD (LED)
Resolution	1920 x 1080 pixel
Aspect Ratio	16 : 9
Active Area	698.4(H)mm x 392.9(V)mm
Pixel Pitch (mm)	0.36375 x 0.36375
Response Time (typical)	25 ms (gray to gray)
Number of Colors	16.7 Million
Brightness (typical)	450 cd/m ²
Contrast Ratio (typical)	1300 : 1
Surface Treatment	Anti-glare
Viewing Angle (CR>10)	R/L 178°, U/D 178°
Input Signal	2 x DVI-D
	2 x SD/HD/3G-SDI (BNC)
	2 x SOG
	1 x VGA (D-sub)
	1 x C-Video (BNC)
	1 x S-Video (DIN)
	1 x Component (RGBS, YPbPr) (5 x BNC)

Item	Description
Output Signal	2 x DVI-D 2 x SD/HD/3G-SDI (BNC) 2 x SOG 1 x C-Video (BNC) 1 x S-Video (DIN) 1 x Component (RGBS, YPbPr) (5 x BNC)
Power Supply	AC/DC Adaptor (AC 100-240V~, DC 24V 6.25A)
Power Consumption	75W max.
Accessories Included	User manual, AC-DC adaptor, AC power cord, DVI-D cable, BNC cable, Remote control, Screw BH M4 x 14
Unit Dimension	770(W) x 471.5(H) x 80.5(D) mm 30.31(W) x 18.56(H) x 3.17(D) inch
Package Dimension	911.35(W) x 742.95(H) x 234.95(D) mm 35.88(W) x 29.25(H) x 9.25(D) inch
IP Rating	IPX1
Weight	13.18 kg, 29.06 lbs. (monitor with cover) 19.14 kg, 42.2 lbs. (shipping package)
Certifications	ANSI/AAMI ES60601-1(UL60601-1), CAN/CSA C22.2 No. 60601-1, FCC Class B, EN60601-1, EN60601-1-2, CE, MDD(93/42/EEC) Class I Medical Device



FSN Medical Technologies products meet RoHS2 and Registration, Evaluation, Authorisation and Restriction of Chemicals (REACH) obligations. FSN manages the information flow as required by regulations.

Specifications are subject to change with or without notice. Doc. # FSN1955 Rev. 10/18

www.fsnmed.com

Foreseeson Custom Displays, Inc.
2210 E. Winston Road
Anaheim, CA 92806 USA
Tel: 714-300-0540
Fax: 714-300-0546

San Jose, CA Tel: 714-507-3851
Fort Lee, NJ Tel: 714-507-3852

Foreseeson Korea
404B, Pangyoinnovalley B
253 Pangyo-ro
Bundang-gu Seongnam-si
Gyeonggi-do, Korea 463-400
Tel: +82-31-8018-0780
Fax: +82-31-8018-0786

Foreseeson GmbH
Industriestrasse 38a
63150 Heusenstamm, Germany
Tel: +49 6104 64398 0
Fax: +49 6104 64398 11

Foreseason UK Ltd.
Unit 71 Barwell Business Park
Leatherhead Road
Chessington, Surrey KT9 2NY
Tel: +44 (0) 208 546 1047

Foreseeson (Shanghai)
Medical Equipment Co., Ltd.
Room 307, 3F
No. 56, 461 Hongcao Road
Caohejing Development District
Xuhui, Shanghai 200233
Tel: 86-21-6113-4188