



Condensing unit
Voltage Code : FZ

CAJN9513ZMHR-FZ

High Temp. Commercial (MHP)

220 - 240V 1~ 50 Hz

R404A

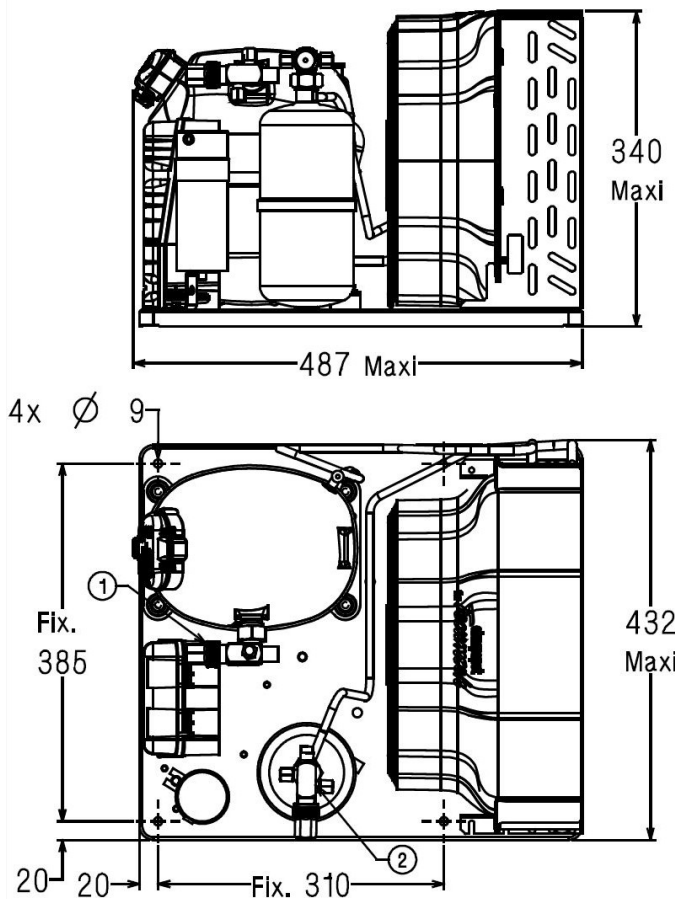
CAJN9513ZMHR-FZ

Operating conditions : **Customized... / 50 Hz / Dew**

Sound Power
ISO3745 / ISO 3743-1

Evaporating Temp. : -6.00 °C	Refrig. Capacity : 1458 Watt
Superheat : 5.00 K	Power Input : 1167 Watt
Return gas temp. : 5.00 °C	Amps : 5.81 A
Ambient : 38.0 °C	C.O.P. : 1.25 Watt/W
Subcooling : 1.00 K	

65 dBA



Net Weight (Kg)	34.0
Expansion device	Expansion_Valve
Air Flow (m³/h)	900
Compo Data Sheet	224JT-FZ
Elec Comp Type	CSR
Current (Amp)	
Load Rated Amp	6.9
Max Cont Current	11.5
Lock Rotor Amp	33
Fan	
Speed (rpm)	1200
Power (W)	30.0
Diameter (mm)	300
Protection	Overload
IP Level	IP54
Condenser	300/3900
Liquid Receiver	
Capacity (L)	1.5
Maximum Pressure (Bars)	32.0
Suction Line	
Suction Type	Vanne Orientable
For Tubing Out Diam	15.9 (5/8")
Suction Connection Type	Brased
Liquid Line	
Liquid Line Type	Vanne Orientable
For Tubing Out Diam	9.5 (3/8")
Liquid Connecton Type	Brased
Connection Type	VR
Fan Guard	maille < à 8mm

Note : Tecumseh reserves the right to change information contained in this document without notification.



Tecumseh

CAJN9513ZMHR-FZ	Tension FZ : 220 - 240V 1~ 50 Hz
------------------------	---

Les performances sont données dans les conditions EN13215 :	Gaz aspirés :	20.0 °C
Condition Dew	Sous refroidissement :	3.0 K
The performance data are in EN13215 conditions :	Return gas :	20.0 °C
Dew Condition	Subcooling :	3.0 K

50 Hz R404A											
											N°5051
5 T ambience	6 T évaporation	(°C)	-25	-20	-15	-10	-5	0	5	10	15
25	1 P frigorifique	(Watt)	1079	1356	1663	1990	2330	2671	3003	3318	3608
	2 P absorbée	(W)	691	792	897	1008	1127	1253	1390	1538	1699
	3 I absorbée	(A)	3.88	4.24	4.66	5.12	5.64	6.22	6.85	7.55	8.31
	4 Tc	(°C)	34.2	36.9	39.8	42.6	45.6	48.7	51.8	55.0	58.3
32	1 P frigorifique	(Watt)	927	1187	1470	1768	2073	2376	2669	2945	3199
	2 P absorbée	(W)	691	803	918	1039	1166	1301	1446	1601	1768
	3 I absorbée	(A)	3.84	4.27	4.73	5.24	5.81	6.42	7.09	7.82	8.60
	4 Tc	(°C)	39.8	42.3	44.9	47.6	50.4	53.2	56.2	59.2	62.3
43	1 P frigorifique	(Watt)	679	915	1163	1416	1669	1915			
	2 P absorbée	(W)	669	799	933	1071	1214	1364			
	3 I absorbée	(A)	3.73	4.25	4.80	5.40	6.03	6.71			
	4 Tc	(°C)	48.5	50.7	53.0	55.4	57.8	60.4			

© 2022 Tecumseh Products Company
All rights reserved

1 = cooling capacity 2 = power input 3 = current 4 = condensing temperature 5 = ambient temperature 6 = evaporating temperature

Nota : Tecumseh se réserve le droit de modifier les informations contenues dans ce document sans préavis.

Note : Tecumseh reserves the right to change information contained in this document without notification.