

DESCRIPTION

GENERAL INFORMATION

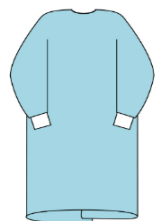
PRODUCT SPECIFICATIONS

| | | | | |
|------------|------------------------|------------|--|-----------------|
| Product : | Standard Surgical Gown | Features | Round collar, velcro, 1 belt, knited cuffs, long sleeves | |
| Art. N° : | INT-60 (S-M-L-XL-XXL) | Cutting | Body 1pc. Sleeves 2pcs. | |
| Size | S-M-L-XL-XXL | | Belt | Frontal, folded |
| Class : | 1s | | | |
| Standard : | EN 13795; ISO 811/2018 | Stitch way | NORMAL SINGLE STITCH | |
| Sterile : | YES | | | |
| Use : | Standard Surgical Gown | All items | LATEX-FREE | |

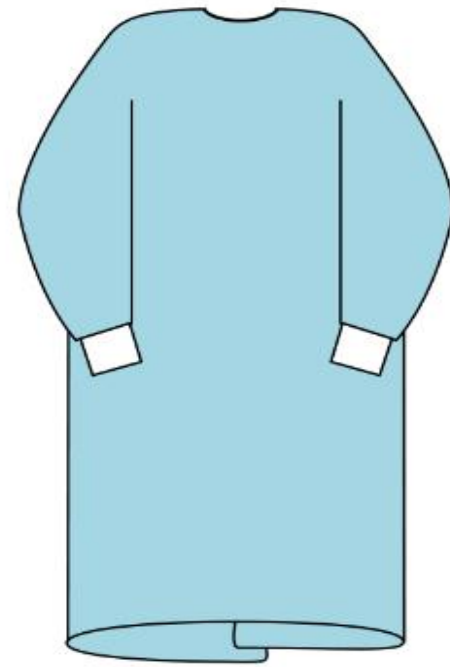
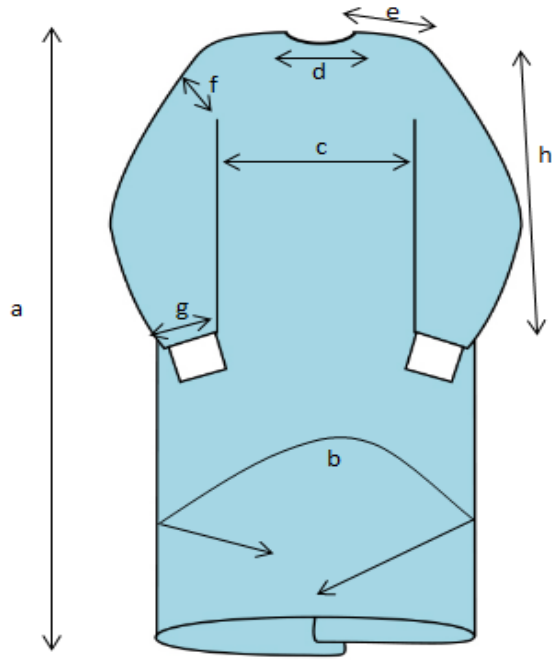
3. RAW MATERIAL

| | Material | Weight | Color | Use |
|--------|----------|---------------------------|--------------|----------------|
| Fabric | SMS | 40g/m ² (+/-2) | Medical Blue | Body + Sleeves |

TECHNICAL DRAWING



| Size | a (total height) | b (total width) | c (chest width) | d (collar width) | e (sholder width) | f (armhole height) | g (cuffs width) | h (sleeves lenght) |
|----------|------------------|-----------------|-----------------|------------------|-------------------|--------------------|-----------------|--------------------|
| Small | 117cm | 160cm | 80cm | 23cm | 21cm | 26cm | 18cm | 58cm |
| Medium | 125cm | 160cm | 80cm | 23cm | 21cm | 26cm | 18cm | 58cm |
| Large | 132cm | 160cm | 80cm | 23cm | 21cm | 26cm | 18cm | 58cm |
| X-Large | 140cm | 160cm | 80cm | 23cm | 21cm | 26cm | 18cm | 58cm |
| XX-Large | 150cm | 160cm | 80cm | 23cm | 21cm | 26cm | 18cm | 58cm |



III.

PACKING INFORMATION



| | Material | Size (LxWxH) cm |
|--------|----------------|-----------------|
| Bag | PE transparent | 30*38cm |
| Carton | Brown carton | L: 39xW:45xH:56 |
| | Bag | 9.978 g (+/- 3) |



Packing condition

50 units / carton

- All the dimensions of the plain drape can be customized according to the desire of the customer. Available - custom dimensions, Reinforcement area, wrap.
- Intersect set is manufactured in accordance with the EN ISO 13485 standard. This ensures that we deliver products and services that consistently meet customer requirements, guaranteeing full customer satisfaction.

- All our products have a CE label and comply with the requirements of the Medical Device Directive 93/42/EEC

Manufacturer: **TOTAL İth. İhr. ve Paz. Ltd. Şti**