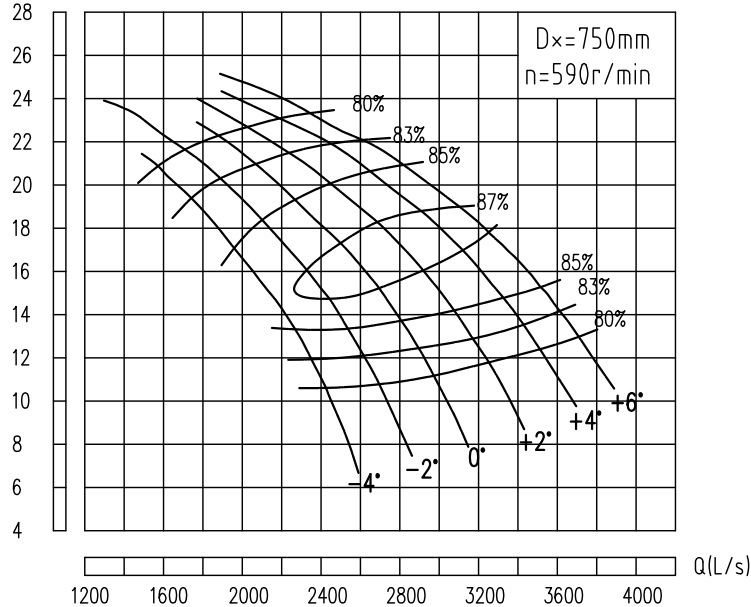


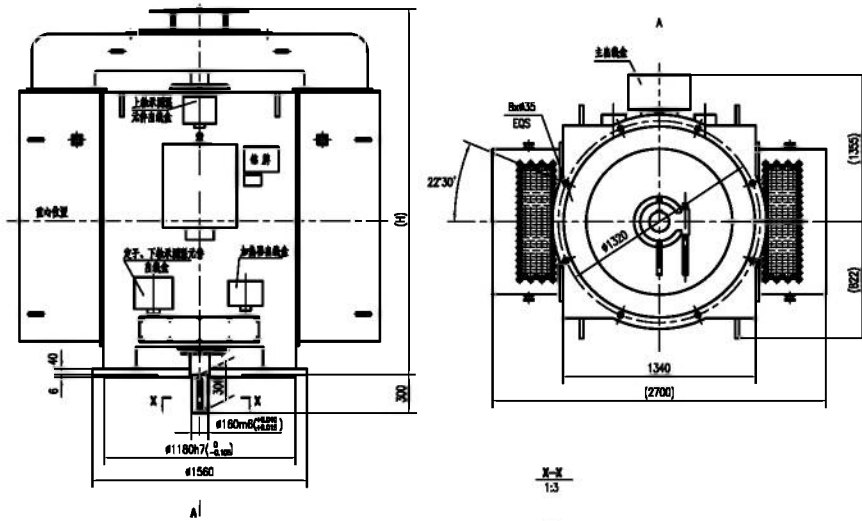
900HLB-40



900HLB-40 性能参数表 PERFORMANCE DATA

叶片安放角 Angle	流量 Q Capacity		扬程 H Head (m)	转速 n Speed (r/min)	功率 Power (kW)		效率 η Efficiency (%)	叶轮直径 Impeller diameter (mm)
	(m³/h)	(l/s)			轴功率 Shaft Power	配用功率 Motor Power		
-4°	8720	2422	10.71	590	316.9	450	80.2	750
	7782	2162	14.87		364.3		86.5	
	6020	1672	20.06		401.3		81.9	
-2°	9682	2689	10.90		357.4	500	80.4	
	8766	2435	14.94		409.0		87.2	
	7233	2009	19.28		448.7		84.6	
0°	10666	2963	11.29		408.2	560	80.3	
	9155	2543	17.02		483.9		87.7	
	7393	2054	21.07		513.5		82.6	
+2°	11581	3217	12.31		474.7	630	81.8	
	10071	2797	17.30		540.7		87.7	
	8057	2238	21.48		565.5		83.3	
+4°	12543	3484	12.98	542.9	710	81.6		
	10918	3033	17.77	605.8		87.2		
	8972	2492	21.68	634.3		83.5		
+6°	13138	3649	13.63	592.5	710	82.3		
	11398	3166	18.78	667.3		87.3		
	9453	2626	22.03	681.9		83.1		

PROJECT NO.							
PROJECT NAME							
	NAME	DATE					
F	DRAWN						
	CHECKED						
	ENG APPR.						
	MFG APPR.						
	Q.A.		PUMP TYPE: 900HLB-40		SIZE A	DWG. NO.	REV.
			PERFORMANCE CURVE		SCALE:	SHEET 1 OF 2	



Technical requirements

I. Technical data

1. Rated voltage: 6kV
2. Frequency: 50Hz
3. Insulation grade: F (130°C level)
4. Protection: IP54 or IP55
5. Mounting method: IMV1
6. Cooling method: IC811
7. Vibration: $\leq 2.3\text{mm/s}$
8. Connection: Y
9. Working mode: S1

II. Bearing data:

1. Bearing type: roller bearing
2. Model: shaft end: 6234/P6
non-shaft end: 73308/P6
3. Grease: 7008 air freight lubrication grease, adding period 1500h.

III. Temperature indicating

Element: PT100 (100/1000)

stator PT100: 8 PCS (2pcs/phase) Alarm: 125°C stop: 130°C

bearing PT100: 2 pcs (1pcs/end) Alarm: 90°C stop: 95°C

Note: Complete instruments are provided by the user. When checking the voltage of the motor winding, the terminals of all temperature measuring components must be grounded.

IV. Terminal box position

The motor main junction box, the heater junction box and the temperature measuring element junction box are located on the same side.

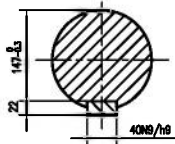
Main outlet box cable incoming range: $\phi 88 \sim \phi 80$

Temperature measurement element outlet box cable inlet range: $\phi 37 \sim \phi 44$

Heater outlet box cable inlet range: $\phi 18 \sim \phi 25$

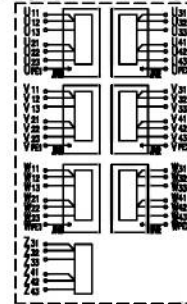
V. Notes

1. The rotation direction of this motor is clockwise (from the extended end of the shaft), and it cannot run in reverse direction with a load.
2. Heater: voltage 220V, power 0.3 kW.
3. Couplings provided by pump plant.
4. The motor does not withstand the thrust from the water pump.
5. Before installing and using the motor, please read the motor instruction manual carefully.



YXKKL500-10	800MM	102.5	93.9	0.80	594	8200	0.7	0.0	1.8	120.8	2740
YXKKL500-10	710MM	93.3	93.8	0.78	594	7900	0.7	0.0	1.8	107.2	2680
YXKKL500-10	630MM	84.0	93.7	0.77	594	7600	0.7	0.0	1.8	95.3	2620
Model	Rated current (A)	Efficiency (%)	Power factor	Speed (r/min)	Total W (kg)	L.C.R.T.	L.C.R.C.	M.T.R.T.	M.M.M (kg·m³)	H	

Stator lower bearing temperature sensor connecting diag



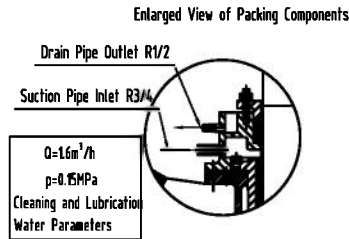
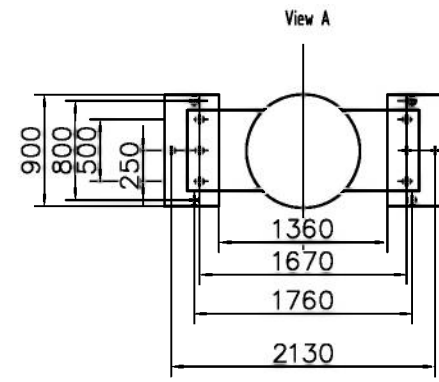
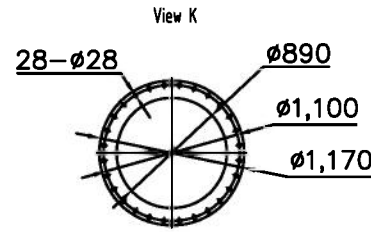
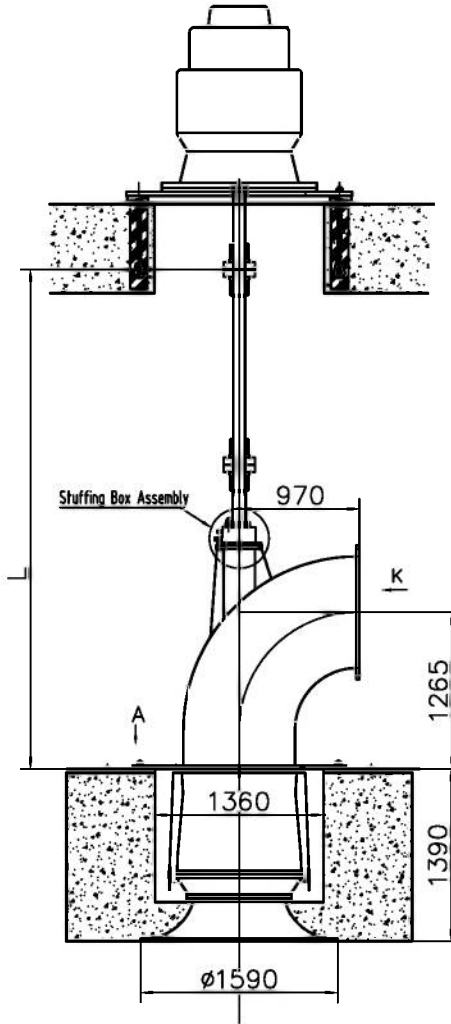
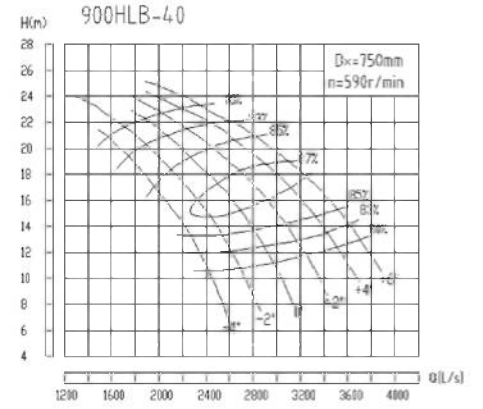
Upper bearing temp. indicating diag



PROJECT NO:	NAME	DATE	OUTLINE DRAWING
PROJECT NAME:	DRAWN		
PROPRIETARY AND CONFIDENTIAL THE INFORMATION CONTAINED IN THIS DRAWING IS THE SOLE PROPERTY OF SHANGHAI KAIQUAN PUMP (GROUP) CO.,LTD. ANY REPRODUCTION IN PART OR AS A WHOLE WITHOUT THE WRITTEN PERMISSION OF SHANGHAI KAIQUAN PUMP (GROUP) CO.,LTD. IS PROHIBITED.	CHECKED		
	ENG APPR		
	MFG APPR		
	Q.A.		
MOTOR TYPE: YXKKL500-10	SIZE A	DWG. NO.	REV.
SCALE:	WEIGHT:	SHEET 1 OF 1	

Technical Specifications

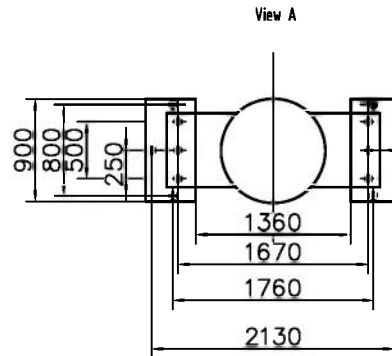
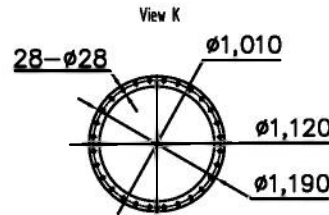
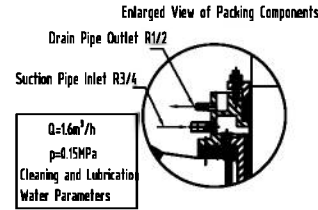
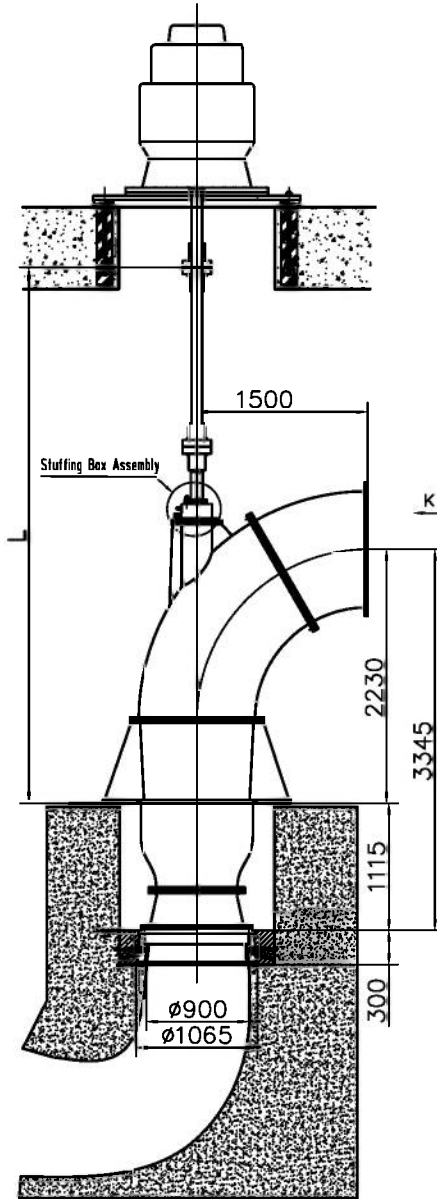
1. Pump Model: 900HLB-40, Q=9360 m³/h, H=13.5 m
2. Matched Motor: 585 r/min, 630 kW
3. Pump Head Weight: 2.5 T, Transmission Device Weight: 2.3T
4. Motor Weight: 5.5 T
5. Maximum Hydraulic Thrust: 11.45 T
6. Pump Layer Dynamic/Static Load: 3.25/2.5 T
7. Motor Layer Dynamic/Static Load: 27/20 T
8. Maximum Lifting Height: 4 m
9. Maximum Lifting Weight: 2.5 T
10. Pre-start water priming (stuffing box) for 10 minutes; water supply stops 15 minutes after pump shutdown.



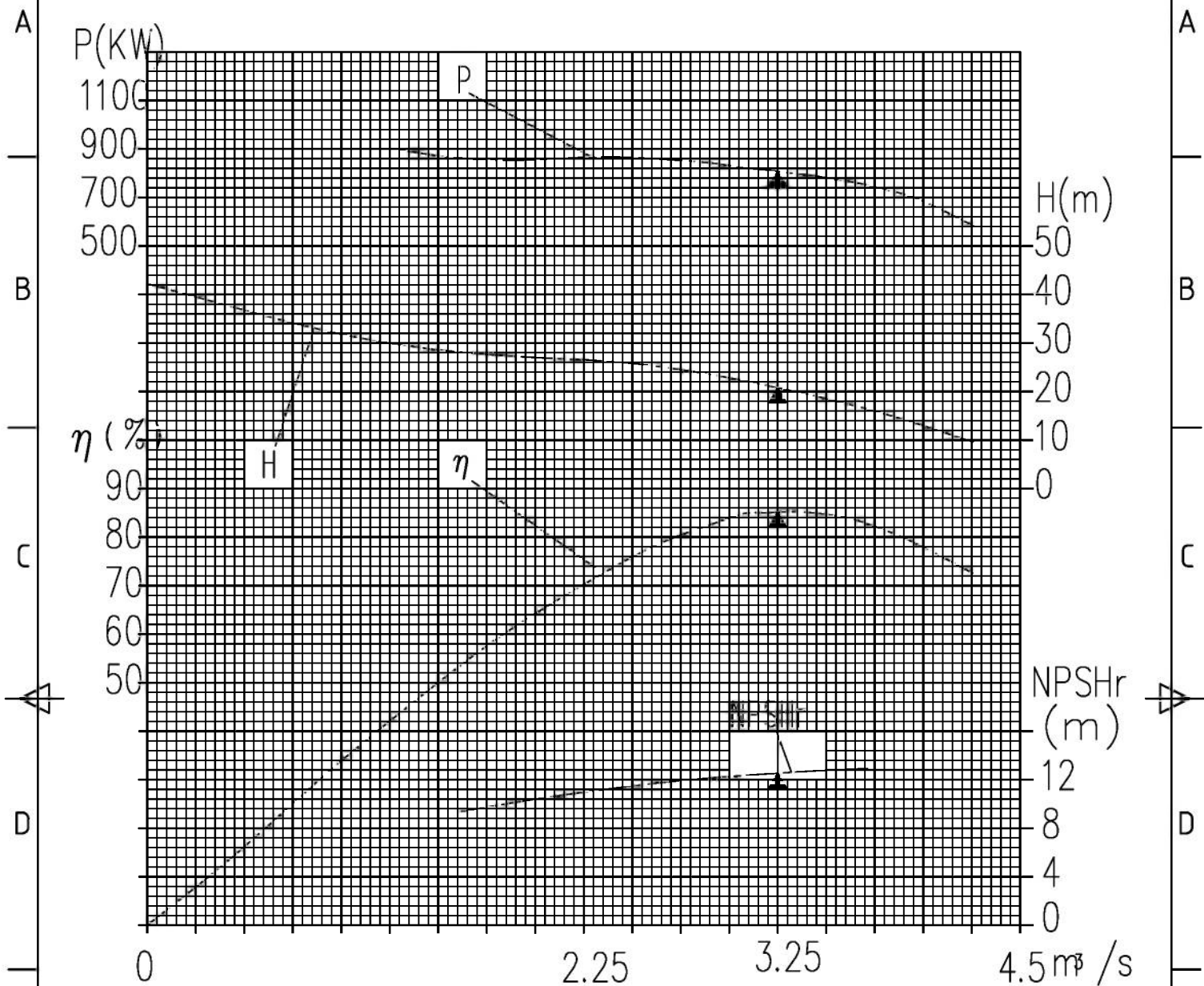
PROJECT NO:	NAME	DATE	OUTLINE DRAWING	
PROJECT NAME:	DRAWN			
PROPRIETARY AND CONFIDENTIAL THE INFORMATION CONTAINED IN THIS DRAWING IS THE SOLE PROPERTY OF SHANGHAI KAIQUAN PUMP (GROUP) CO.,LTD.. ANY REPRODUCTION IN PART OR AS A WHOLE WITHOUT THE WRITTEN PERMISSION OF SHANGHAI KAIQUAN PUMP (GROUP) CO.,LTD. IS PROHIBITED.	CHECKED			
	ENG APPR			
	MFG APPR			
	Q.A.			
PUMP TYPE: 900HLB-40	SIZE A	DWG. NO.	REV.	
SCALE:	WEIGHT:	SHEET 1 OF 1		

Technical Specifications

1. Pump Model: 1000HD-21 | Flow Rate (Q): 11,700 m³/h | Head (H): 21m
2. Matched Motor: 750 r/min | Power: 1,000 kW
3. Pump Head Weight: 3 T
4. Transmission Device Weight: 1.9 T
5. Maximum Hydraulic Thrust: 8.9 T
6. Pump Layer Dynamic/Static Load: 4.8 T / 4 T
7. Motor Layer Dynamic/Static Load: 25 T / 15 T
8. Maximum Lifting Height (Pump Head): 5 m
9. Maximum Lifting Weight: 10 T
10. Pre-Start Water Priming (Stuffing Box): 10 min | Water Shutdown Delay After Pump Stop: 15 min
11. If external water supply is unavailable on-site, technical consultation with the pump manufacturer is required.
12. The manufacturer only supplies the intermediate bearing assembly. The crossbeam or steel structure must be provided by the construction party.
13. Pump Accessories (post-discharge elbow):
 30° bend pipe
 Expansion joint
 Diffuser pipe
 Straight pipe
 Flap valve
 (Customizable based on user requirements.)

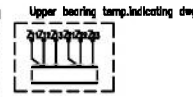
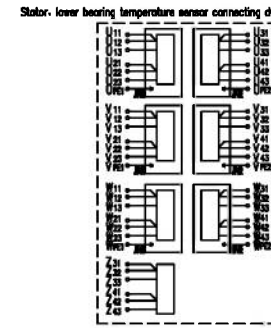
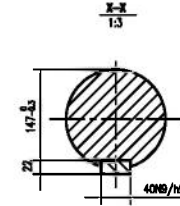
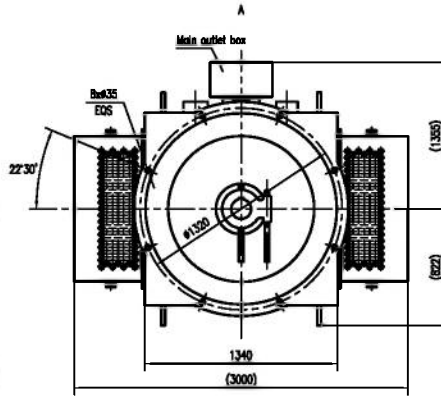
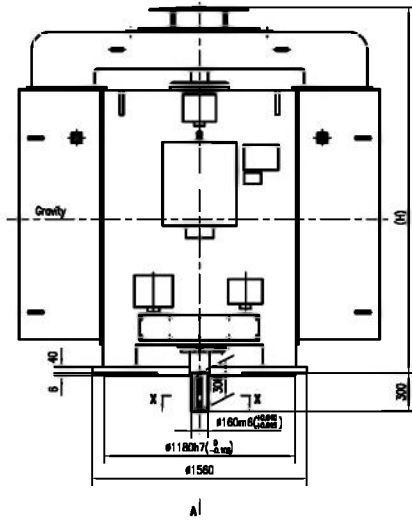


PROJECT NO:		NAME	DATE	OUTLINE DRAWING
PROJECT NAME:		DRAWN		
PROPRIETARY AND CONFIDENTIAL THE INFORMATION CONTAINED IN THIS DRAWING IS THE SOLE PROPERTY OF SHANGHAI KAIQUAN PUMP (GROUP) CO.,LTD. ANY REPRODUCTION IN PART OR AS A WHOLE WITHOUT THE WRITTEN PERMISSION OF SHANGHAI KAIQUAN PUMP (GROUP) CO.,LTD. IS PROHIBITED.		CHECKED		
		ENG APPR		
		MFG APPR		
		Q.A.		
	PUMP TYPE:	1000HD-21		SIZE A
		SCALE:	WEIGHT:	REV.
				SHEET 1 OF 1



flow Q (m ³ /s)	head H (m)	speed n (r/min)	shaft power P (kW)	matching power P (kW)	efficiency η (%)	net positive suction head NPSH(m)
3.25	21	750	780	1000	85	13

PROJECT NO.		SHANGHAI KAIQUAN PUMP(GROUP)CO.,LTD.					
PROJECT NAME							
	NAME	DATE	PUMP TYPE: 1000HD-21		SIZE A	DWG. NO.	REV.
F	DRAWN		PERFORMANCE CURVE		SCALE:	SHEET 1 OF 2	
	CHECKED						
	ENG APPR						
	MFG APPR						
	Q.A.						



YXKK500-8	1000W	121.3	94.4	0.84	741	8500	0.7	6.0	1.8	110.2	2740
YXKK500-8	900W	108.3	94.3	0.84	741	8400	0.7	6.0	1.8	102.2	2680
YXKK500-8	800W	99.7	94.2	0.82	741	7800	0.7	6.0	1.8	95.7	2620
Model	Rated output (W)	Eff. (%)	Power factor	Speed (r/min)	Total W (kg)	L R.T	L.C R.C	M.I R.T	M.MDI (kg·m ²)	H	

Technical requirements

- Technical data
 1. Rated voltage : 6W 2. Frequency : 50Hz 3. Hot grade : 130(F) level
 4. Protection : IP54 or IP56 5. Mounting method : IMV1 6. Cooling method : IC811
 7. Vibration : ≤ 2.3mm/s 8. Connection : Y 9. Working mode : S1
- Bearing data :
 1. Bearing type : roller bearing
 2. Model : shaft end 6234/P6 non-shaft end 7330B/P6
 3. Grease : 7008 oil freight lubrication grease , adding period 1500h.
- Temperature indicating Elements : PT100 (CM1000)
 - stator PT100 : 6 PCS (2pcs/phase) Alarm : 125°C stop : 130°C
 - bearing PT100 : 2 pcs (1pcs/end) Alarm : 90°C stop : 95°C
- Note : Complete instruments are provided by the user. When checking the voltage of the motor winding, the terminals of all temperature measuring components must be ground.
- Terminal box position
 - The motor main junction box, the heater junction box and the temperature measuring element junction box are located on the same side.
 - Main outlet box cable incoming range : φ 68 ~ φ 80
 - Temperature measurement element outlet box cable inlet range : φ 37 ~ φ 44
 - Heater outlet box cable inlet range : φ 18 ~ φ 25
- Notes
 1. The rotation direction of this motor is clockwise (from the expanded end of the shaft), and it cannot run in reverse direction with a load.
 2. Heater : voltage 220V, power 0.3 kW.
 3. Couplings provided by pump plant.
 4. The motor does not withstand the thrust from the water pump.
 5. Before installing and using the motor, please read the motor instruction manual carefully.

PROJECT NO.:		NAME	DATE	OUTLINE DRAWING
PROJECT NAME:				
PROPRIETARY AND CONFIDENTIAL THE INFORMATION CONTAINED IN THIS DRAWING IS THE SOLE PROPERTY OF SHANGHAI KAIQUAN PUMP (GROUP) CO.,LTD. ANY REPRODUCTION IN PART OR AS A WHOLE WITHOUT THE WRITTEN PERMISSION OF SHANGHAI KAIQUAN PUMP (GROUP) CO.,LTD. IS PROHIBITED.				
MOTOR TYPE: YXKKL500-8		SIZE A	DWG. NO.	
SCALE:		WEIGHT:		SHEET 1 OF 1