



**MERCATOR**

# NONWOVEN'S PORTFOLIO

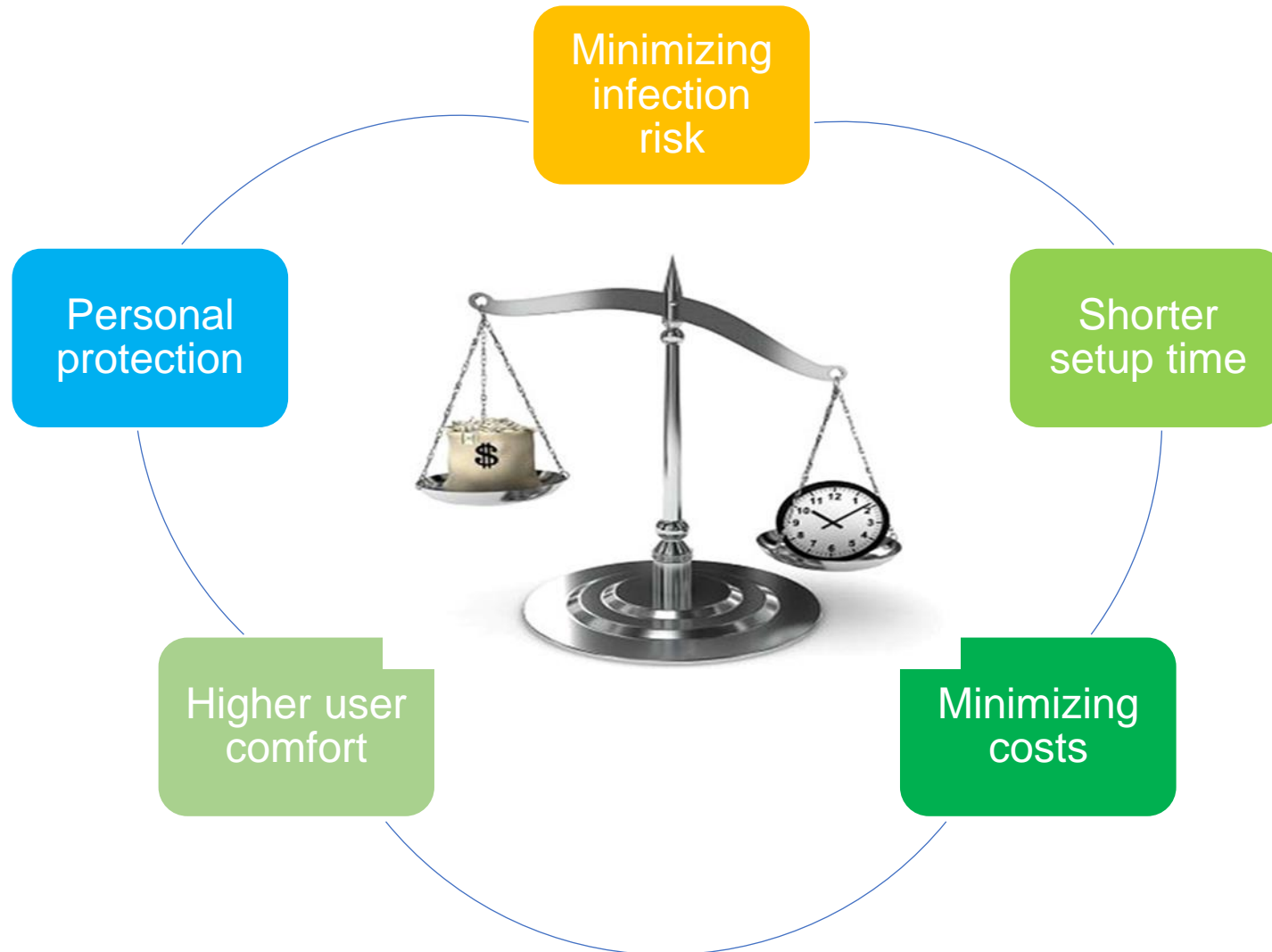
OPERATING THEATRE AND CLOTHING

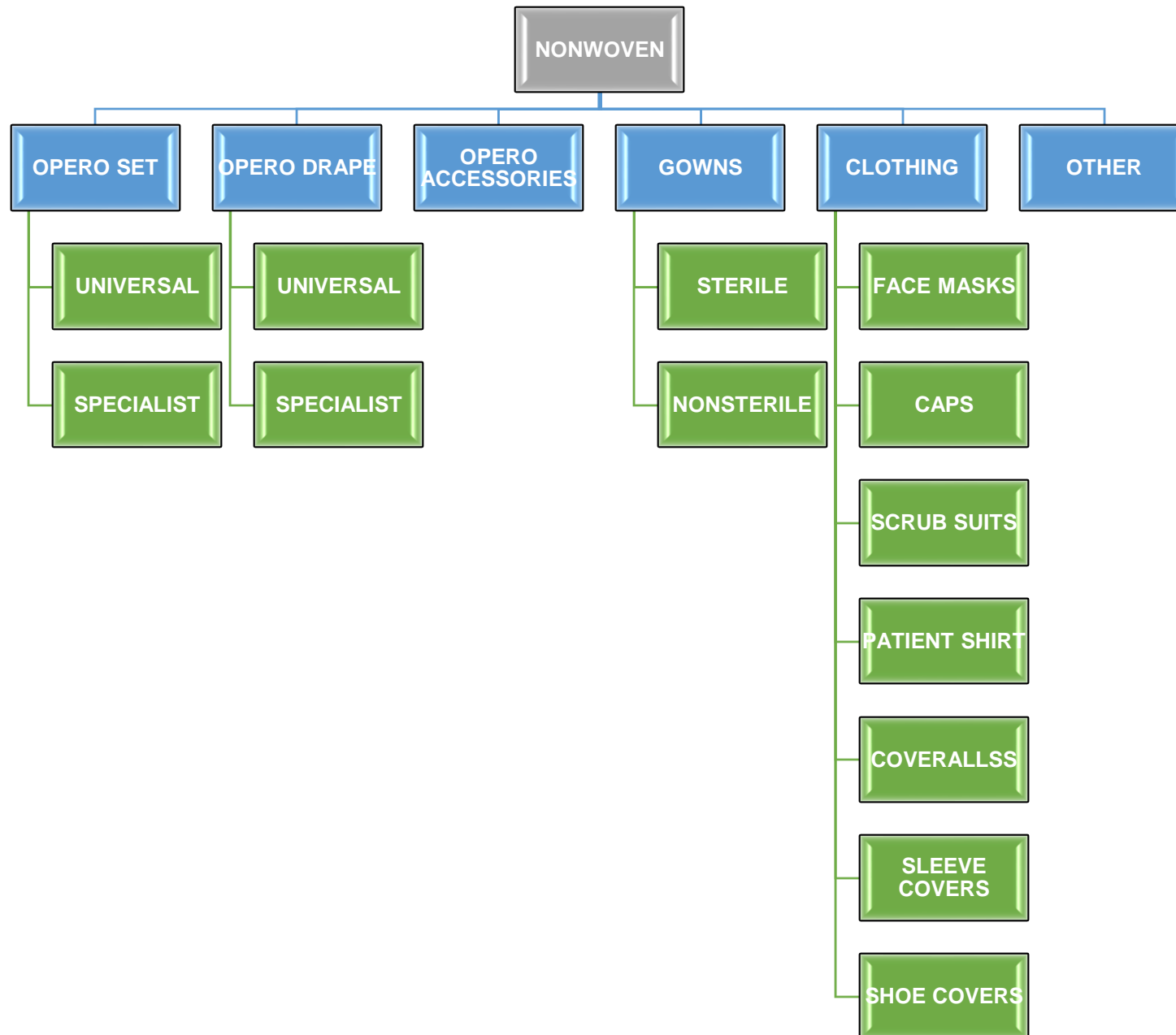
OPERO® SET & OPERO® DRAPE

OPERO® ACCESSORIES

CLOTHING AND OTHER

# WHY DISPOSABLE PRODUCTS?





# SURGICAL DRAPING- OPERO® SET

## **Division of the assortment and the number of sets dedicated to individual fields of surgery:**

- a. Basic & universal SET – 8 + 2 with gowns( standard/reinforced)
- b. Gynecology, Obstetrics and Urology - 11
- c. General surgery - 4
- d. Orthopedics and traumatology - 12
- e. Ophthalmology - only one specialist drape
- f. Cardiac surgery and interventional cardiology (angiography) - 1
- g. Others - Craniotomy (1), Otolaryngology (1)



## **Additional information:**

- Sets with a version of the red and blue Mayo cover, reinforcement along the entire length of the bag.
- Large absorbent patches in the critical zones of the drapes.
- Paper-foil envelope for the unit and casing catons

# SURGICAL DRAPING- LAMINATE

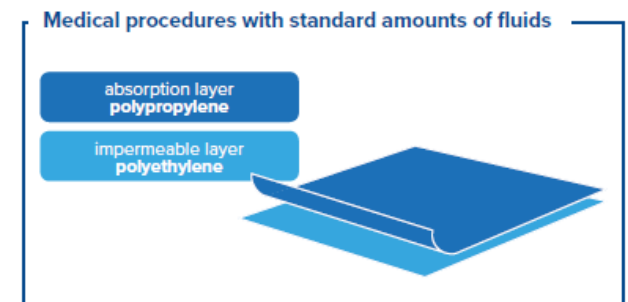
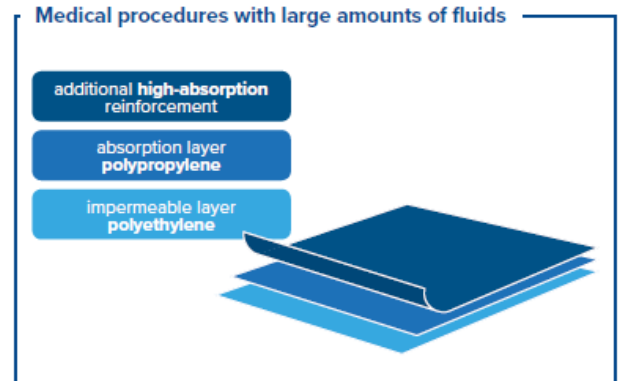
## Analysis of the offered laminates and nonwovens, considering the distinguishing features and advantages

One type of laminate: 2-layer and 2-layer with reinforcement in the critical field for medical procedures with large amounts of fluids

- Reinforcement in the critical zone made of Spunlace nonwoven fabric
- High parameters of resistance to pushing out and stretching
- The liquid absorption capacity is given for the finished product

### Additional information:

Large absorbent patches and absorbency of 300% and 900% in the critical zone



## TYPES OF OPERO® SET

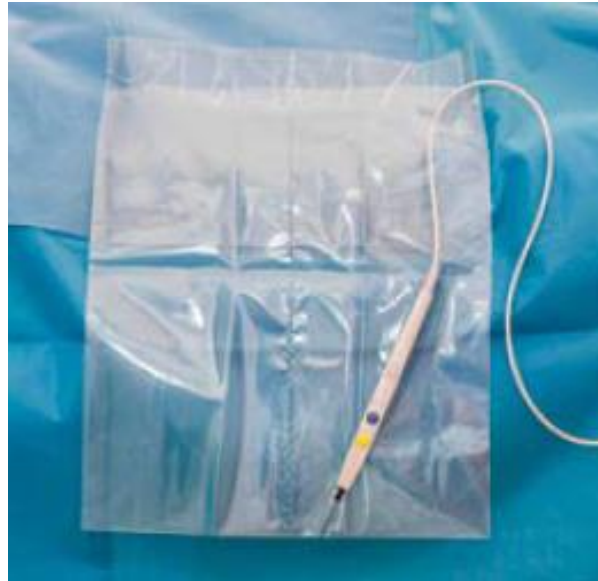
- ✓ Basic / Universal
- ✓ Laparoscopy
- ✓ Knee arthroscopy
- ✓ Hip
- ✓ Extremity
- ✓ Hand/foot
- ✓ Shoulder
- ✓ Vertical isolation
- ✓ Gynecology
- ✓ C-section (incision film+/-)
- ✓ Delivery
- ✓ Abdominal-perineal
- ✓ Urology TUR
- ✓ Nephroskopy PCNL
- ✓ Angiography
- ✓ Varicose veins .....and others



# OPERO ACCESSORIES

## Supplement to the offer of OPERO® sets

- Facilitating the organization of equipment during the procedure
- Facilitating the work of operators and operating theater staff



## OFFER:

- Lamp cover
- Mayo table cover
- Camera cover
- Medical tape
- Limb protectors
- Pockets for surgical instruments



# SURGICAL GOWNS

## Assortment structure:

- Three types of material - **Spunlace** (68 g / m<sup>2</sup>), **SMMS** (35 g / m<sup>2</sup>) and **SMS** (35 g / m<sup>2</sup>)
- One OPERO line, each with non-reinforced and reinforced gowns ( 40 g/m<sup>2</sup>)
- Packing method: all gowns are wrapped with 2 towels inside. Paper and foil envelope.
- In SMMMS GOWNS there is a color differentiation of wraps according to size

## Additional information:

- Good workmanship of the gowns
- Reinforcements mounted around with glue - not pointwise,
- 4 sound ultrasonic seam in SMMMS.

	M
	L
	XL
	XXL
	XXXL



# Opero® surgical gown SMMMS

**Material:** Non-woven polypropylene SMMMS (Spunbond 3X Meltblown Spunbond)

**Sterilization:** Ethylene Oxide (ETO)

**Weight:** 35g / m<sup>2</sup>

**Size:** M, L, XL, XXL, XXXL

**Color:** blue

**Method of packaging:**

- Unit (paper and foil packaging) - 1 piece
- Carton- 50 x 1 = 50 pieces

**Product description:** SMMMS non-woven surgical gown wrapped in a 60 x 60 cm SPP non-woven fabric drape. Ultrasonically welded gowns elements. Packed with 2 40 x 40 cm viscose towels. Individually packed in a sealed paper-foil envelope with 2 TAG transfer stickers and a sterilization indicator.

**Application:** for short / medium and dry operations



# Opero® surgical gown SMMMS reinforced

**Material:** non-woven polypropylene SMMMS (Spunbond 3X Meltblown Spunbond); internal PP + PE laminate (polypropylene + polyethylene)

**Sterilization:** Ethylene Oxide (ETO)

**Weight:** SMMMS **35g / m<sup>2</sup>**, reinforcement: PE + PP 40g / m<sup>2</sup> laminate  
microporous, "breathable"

**Size:** M, L, XL, XXL, XXXL

**Color:** blue

**Method of packaging:**

- **Unit (paper and foil packaging) - 1 piece**
- **Carton - 50 x 1 = 50 pieces**

**Product description:** Surgical gown made of SMMMS nonwoven fabric, reinforced on the front and  $\frac{3}{4}$  of the sleeves, wrapped in a 60 x 60 cm SPP nonwoven fabric drape. Ultrasonically welded elements of the gown. Packed together with 2 40 x 40 cm viscose towels. Individually packed in a sealed paper-foil envelope with 2 TAG transfer stickers and a sterilization indicator.

**Application:** for long and wet operations



# Opero® surgical gown Spunlace/Spunlace reinforced\*

**Material:** soft viscose-poliester (nonwoven pulp)

**Sterilization:** Ethylene Oxide (ETO)

**Weight:** Spunlace **68g / m<sup>2</sup>**, reinforcement: PE + PP 40g / m<sup>2</sup> laminate\*

microporous, "breathable"

**Size:** M, L, XL, XXL, XXXL

**Color:** light blue

**Method of packaging:**

- **Unit (paper and foil packaging) - 1 piece**

- **Carton - 25 x 1 = 25 pieces**

**Product description:** Surgical gown made of SMMMS nonwoven fabric, **reinforced on the front and  $\frac{3}{4}$  of the sleeves\***. Individually packed in a sealed paper-foil envelope with 2 TAG transfer stickers and a sterilization indicator.

**Application:** for short / medium and dry operations /for long and wet operations\*



# Opero® surgical gown SMS/ SMS reinforced

**Material:** non-woven polypropylene SMS (Spunbond Meltblown Spunbond); internal PP + PE laminate (polypropylene + polyethylene)

**Sterilization:** Ethylene Oxide (ETO) PE + PP 40g / m<sup>2</sup> laminate\*

**Weight:** SMMMS 35g / m<sup>2</sup>, reinforcement: microporous, "breathable"

**Size:** M, L, XL, XXL, XXXL

**Color:** blue

**Method of packaging:**

- Unit (paper and foil packaging) - 1 piece

- Carton - 50 x 1 = 50 pieces

**Product description:** Surgical gown made of SMMMS nonwoven fabric, reinforced on the front and  $\frac{3}{4}$  of the sleeves.\*Individually packed in a sealed paper-foil envelope with 2 TAG transfer stickers and a sterilization indicator.

**Application:** for short / medium and dry operations /for long and wet operations\*



# CLOTHING

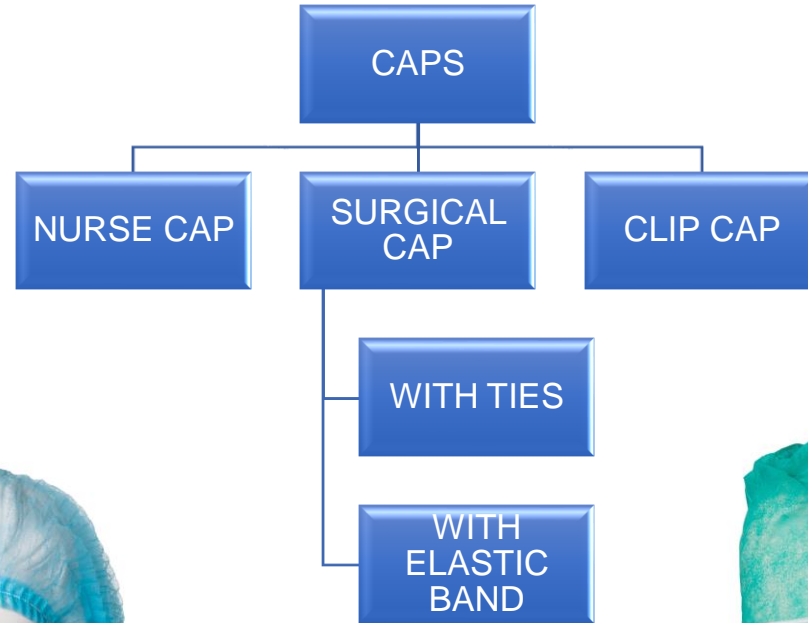
## **Assortment structure:**

- One type of material in SMS scrub suits (45 g / m<sup>2</sup>). A wide range of sizes XS- XXXL and colors (blue, green, purple, pink)
- SMS patient shirt, universal size, one color
- Two types of visiting non-sterile gowns (cuff, elastic band) in 3 colors
- 3 types of surgical masks according to EN 14683 in 3 colors
- 4 types of caps in 3 colors (except surgical caps - one color)

## **Additional information:**

A wide range of colors and sizes of surgical clothing, currently packed as a set

# CAPS



## NURSE CAP

Material: **Spunbond**

Weight: **15g/m2**

Packing: paper box –dispencer  
or PE bag- 100 pcs

CARTON: 1000 PCS



## CLIP CAP

Material: **Spunbond**

Weight: **13g/m2**

Packing: PE bag- 100 pcs

CARTON: 1000 PCS



## SURGICAL CAP with ties

Material: **Spunbond**

Weight: **20 g/m2**

Packing: paper box –dispencer-  
100 pcs

CARTON : 1000 PCS



## SURGICAL CAP with elastic band

Material: **Spunbond**

Weight: **20 g/m2**

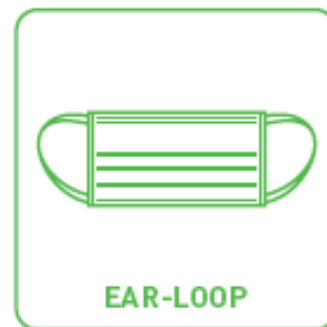
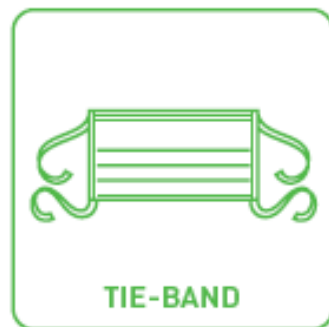
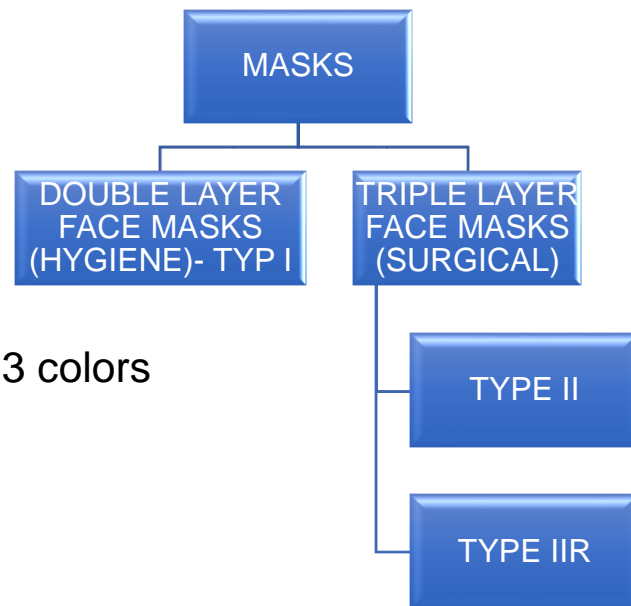
Packing: paper box –dispencer-  
100pcs

CARTON : 1000 PCS

# MASKS

## Assortment structure:

- 3 types of surgical masks according to EN 14683 in 3 colors
- Only surgical masks have tie band
- PACKING: paper box- 50 pcs  
carton : 2000 pcs





# SCRUB SUITS

**Material:** Non-woven polypropylene SMS (Spunbond Meltblown Spunbond), non-sterile

**Weight:** 45g / m<sup>2</sup>

**Size:** S, M, L, XL, XXL, XXXL

**Color:** pink, blue, green, violet

**Method of packaging:**

- Unit (paper and foil packaging) - 1 piece

- Carton- 25 x 1 = 50 pieces

**Product description:** Blouse with 3 pockets, trousers fastened with waist ties



# PATIENT SHIRT

**Material:** Non-woven polypropylene SMS (Spunbond Meltblown Spunbond), non-sterile

**Weight:** 35g / m<sup>2</sup>

**Size:** universal

**Color:** blue

**Method of packaging:**

- Unit (paper and foil packaging) - 10 pieces
- Carton- 10x 50= 500 pieces

**Product description:** Waist and neck laces



# NON-STERILE GOWNS



**PROTECTIVE GOWN**  
**Knit cuff**  
Material: **PP**  
Weight: **24g/m<sup>2</sup>**  
Color: blue  
Packing: PE bag- 10 pcs  
CARTON: 50 PCS



**HYGIENIC GOWN**  
**elastic cuff**  
Material: **PP**  
Weight: **24g/m<sup>2</sup>**  
Color: blue, white, green  
Packing: PE bag- 10 pcs  
CARTON: 50 PCS



**PE APRON**  
**elastic cuff**  
Material: **PE Film**  
Weight: **0,02 mm**  
Color: blue, white  
Packing: PE bag- 10 pcs  
CARTON: 50 PCS

# COVERALL

**Material:** Non-woven polypropylene type Spunbond , non-sterile

**Weight:** 30g / m<sup>2</sup>

**Size:** M-XXXL

**Color:** navy blue, white

**Method of packaging:**

- **Unit (paper and foil packaging) - 1 piece**

- **Carton- 25 x 1 = 25 pieces**

**Product description:**

- ✓Fastened with a zipper
- ✓Hood and cuffs tightend with elastic
- ✓Elastic at the waist and legs



# SHOE COVERS

**Material:** nonwoven/CPE, non-sterile

**Weight:** 30 g/m<sup>2</sup> / 0,03mm

**Size:** 45x17 cm/45x15 cm

**Color:** blue, green, white

**Method of packaging:**

- Unit (paper and foil packaging) - 100 pieces

- Carton- 100x 10= 1000 pieces

**Product description:**



# SLEEVE COVERS

**Material:** PE film, non-sterile

**Weight:** 0,02 mm

**Size:** 40 x 22 cm

**Color:** blue, white

**Method of packaging:**

- Unit (paper and foil packaging) - 100 pieces

- Carton- 10x 100= 1000 pieces

**Product description:** Tightened with elastic



# OTHER

## Nonwoven bed sheet

**Material:** polypropylene 25 g/m<sup>2</sup>

**Color:** green

**Size:** 80 x 210 cm; 160 x 210 cm

**Packing:** unit-1 pc, carton – 50 pcs

## Disposable nonwoven bed linen set

**Material:** SBPP nonwoven 20 g/m<sup>2</sup>

**Color:** green

**Size:** 150x 200cm (sheets)

150x 210cm (duvet cover)

70x80cm (pillow)

**Packing:** unit-10 pcs, carton – 100 pcs

## Nonwoven bed sheet with PE

**Material:** PP – 24 g/m<sup>2</sup>+ PE 13 g/m<sup>2</sup>

**Color:** green

**Size:** 150 x 200 cm, 160 x 210

**Packing:** unit-10 pcs, carton – 100 pcs



**MERCATOR**

## CONTACT US

**Mercator Medical S.A.**  
ul. H. Modrzejewskiej 30  
31-327 Kraków  
ph. +48 12 66 55 400  
fax +48 12 66 55 415

e-mail: [medical@pl.mercatormedical.eu](mailto:medical@pl.mercatormedical.eu)