

# URIT



[www.urit.com](http://www.urit.com)

## URIT-500B

Urine Analyzer

---

### SERVICE MANUAL



## TABEL OF CONTENTS

1. Overview.....	1
2. Common malfunction and remedy.....	1
2.1 Malfunctions due to improper installation environment.....	1
2.2 Common malfunction and remedy.....	1
3. Malfunction and Remedy.....	3
3.1 There is no response when turning on the power.....	3
3.2 The instrument can not get to the ready screen when turning on the power (Self-checking not pass).....	4
3.3 There is no display on the screen.....	5
3.4 Push bar doesn't move right when a strip is put on the platform.....	6
3.5 Push bar moves when there is no strip on the platform.....	7
3.6 The results could not be printed by inner printer.....	8
3.7 The display screen is not sensitive to touch or inaccurate in position.....	9
3.8 Transfer electrical motor doesn' t work well.....	10
3.9 Detecting electrical motor doesn't work well.....	11
3.10 Strip transfer mechanism works abnormal.....	12
3.11 Halogen lamp doesn't work (The light value is weak).....	13
3.12 Serial port output/input doesn't work.....	14
3.13 USB output/input doesn't work.....	14
3.14 Bar code input doesn't work.....	15
3.15 LAN terminal output doesn't work.....	15

Version: V1.02

# 1. Overview

URIT-500B urine analyzer is manufactured under strict supervision. This is a kind of precise analyzer, improper operation or any damaged component may affect the results or make damage to the instrument. If an operational or instrument problem occurs, an error number may display on the Analyzer screen. This section of the manual lists various errors and messages, along with probable causes and recommended remedies to quickly and easily correct the problem. If the problem persists after following the recommended remedy, consult Table 2 for common malfunction and remedy.

## Caution:

**Be sure to turn off the power supply before opening the instrument cover or replacing parts. Beware of the high voltage inside.**

## 2. Common malfunction and remedy

### 2.1 Malfunctions due to improper installation environment.

Consult table 1.

Table 1

NO	Environmental Cause	Consequence
1	Direct sunshine	Strip sensor failure
2	Abnormal temperature	Erroneous test result、abnormal LCD.
3	Volatile voltage	Device failure
4	Strong electromagnetic interference	Device failure
5	Dust, moist and corrosives gas	Impaired precise parts
6	Uneven ground of worktable	Deviation of strip position

### 2.2 Common malfunction and remedy

Consult Table 2 for common malfunction and remedy.

Table 2 common malfunction and remedy

SN	MALFUNCTION	CAUSE	REMEDY
1	There is no response when turning on the instrument.	1. There is some problem about the input voltage. 2. Power connector is loose or defective.	3.1
2	The instrument can not get to the ready screen when turning on the power.	1. The display connection cable is defective. 2. The power circuit is defective. 3. The main board is defective. 4. Electrical motor system is defective.	3.2
3	There is no display on	1. Connection cable is loose or defective.	3.3

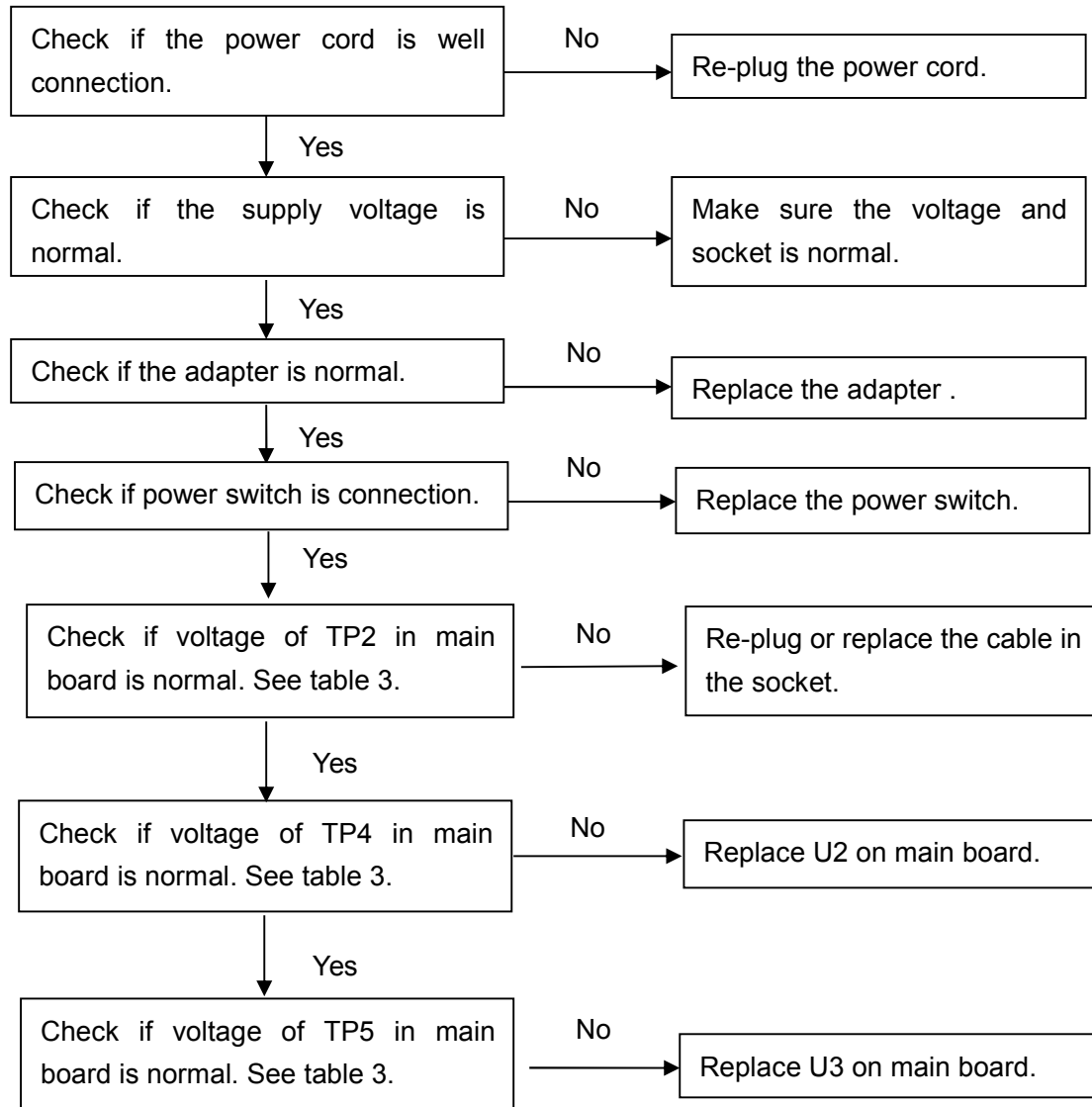
	the screen.	2. LCD contrast is improper. 3. Damaged LCD module.	
4	Push bar doesn't move right when a strip is put on the platform.	1. Strip detector is defective. 2. The electric motor is defective.	3.4
5	Push bar moves right when there is no strip on the platform.	1. Strip sensor is triggered by hand or other foreign object by accident. 2. Fixed platform is dirty. 3. The strip sensor is defective.	3.5
6	Test results cannot be printed out by the internal printer.	1. The printer is OFF. 2. The printer is short of paper. 3. Printer connection cable is loose or defective. 4. Damaged printer.	3.6
7	The keys don't work well.	1. The keys are defective. 2. The main board is defective. 3. Connection cable is loose or defective.	3.7
8	Transfer electrical motor doesn't work well.	1. The socket of motor is loose. 2. The electrical motor is defective. 3. The main board is defective.	3.8
9	Detecting electrical motor doesn't work well.	1. The socket of motor is loose. 1. The electrical motor is defective. 2. The main board is defective.	3.9
10	Strip transfer mechanism works abnormal.	1. The socket of motor is loose. 2. The electrical motor is defective. 3. The main board is defective.	3.10
11	Halogen lamp doesn't work.	1. The connection cable is loose. 2. The halogen lamp is defective.	3.11
12	Serial port output/input doesn't work.	The setting about serial port is wrong.	3.12
13	USB output/input doesn't work.	The setting about serial port is wrong.	3.13
14	Bar code input doesn't work.	The setting about PS/2 port is wrong.	3.14
15	LAN terminal output doesn't work.	The setting about LAN terminal is wrong.	3.15

**Note:**

**Make sure the version of new board is consistent with the replaced board when replacing a circuit board.**

### 3. Malfunction and Remedy

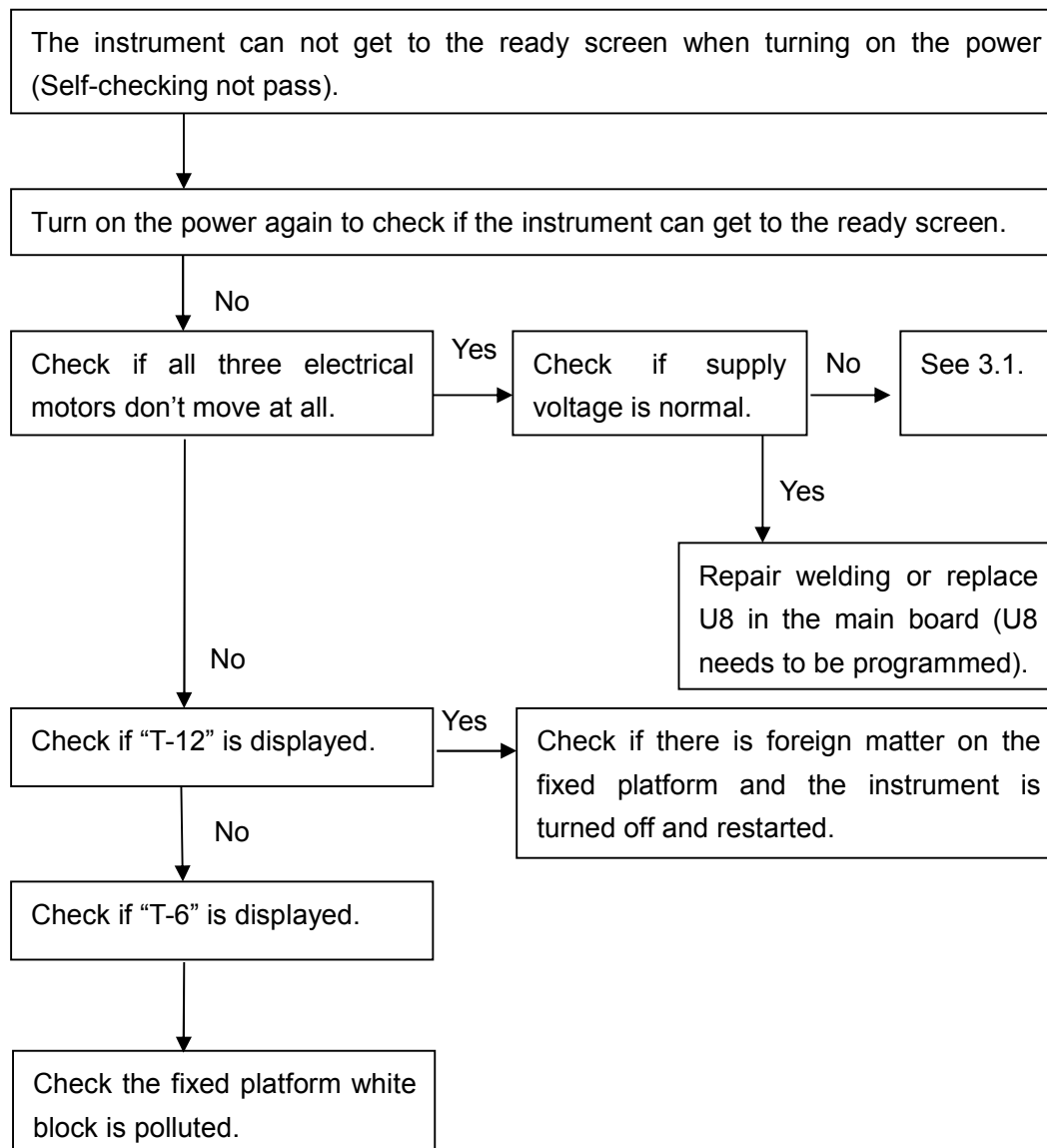
#### 3.1 There is no response when turning on the power.



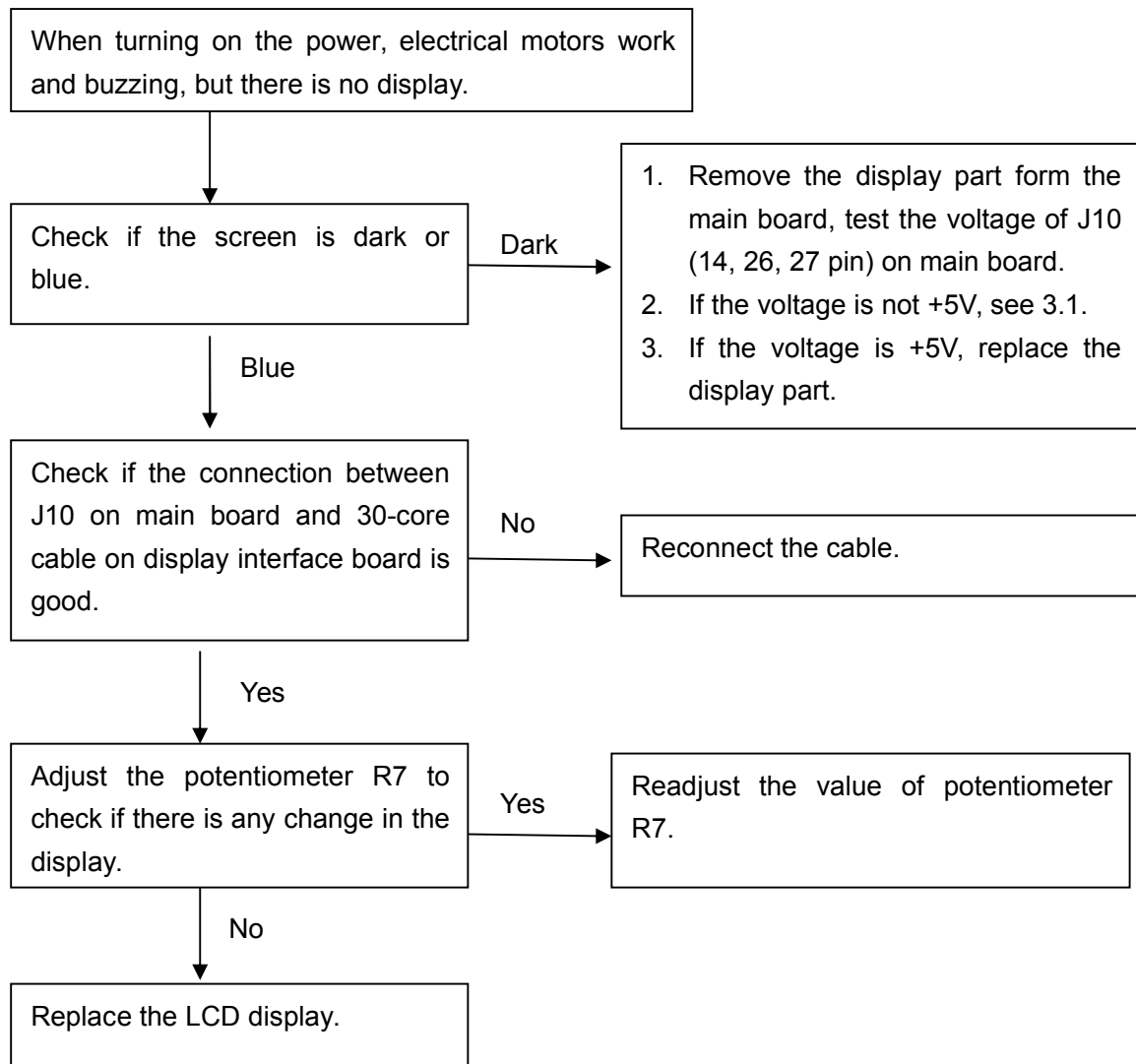
**Table 3: Test voltage of main board**

ITEM	TP1	TP2	TP4	TP5	TP6	TP7
Voltage value	8.4V±0.3V	12V±0.5V	5V±0.3V	3.3V±0.1V	5V±0.3V	4.09±0.05V

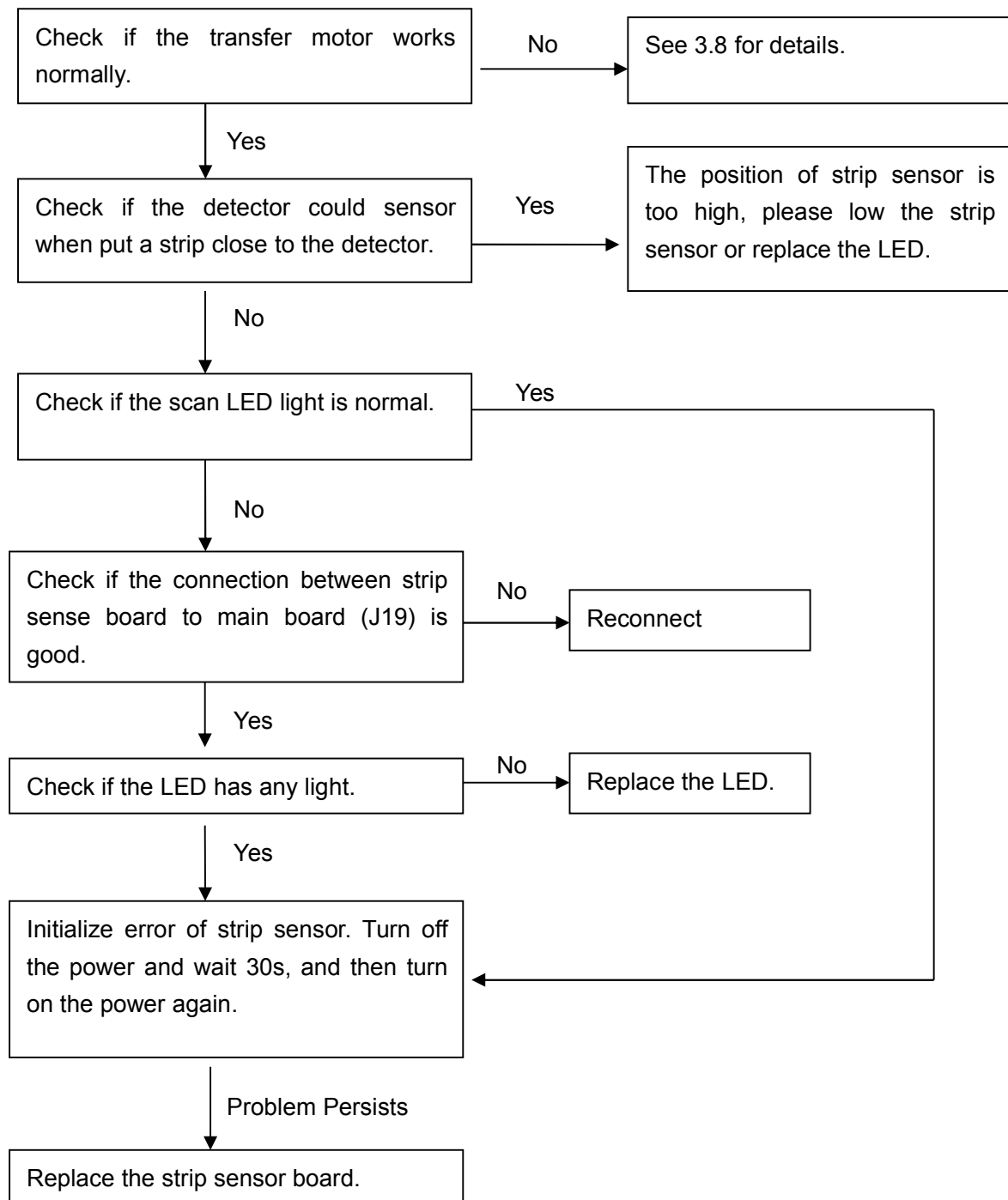
**3.2 The instrument can not get to the ready screen when turning on the power (Self-checking not pass).**



### 3.3 There is no display on the screen.

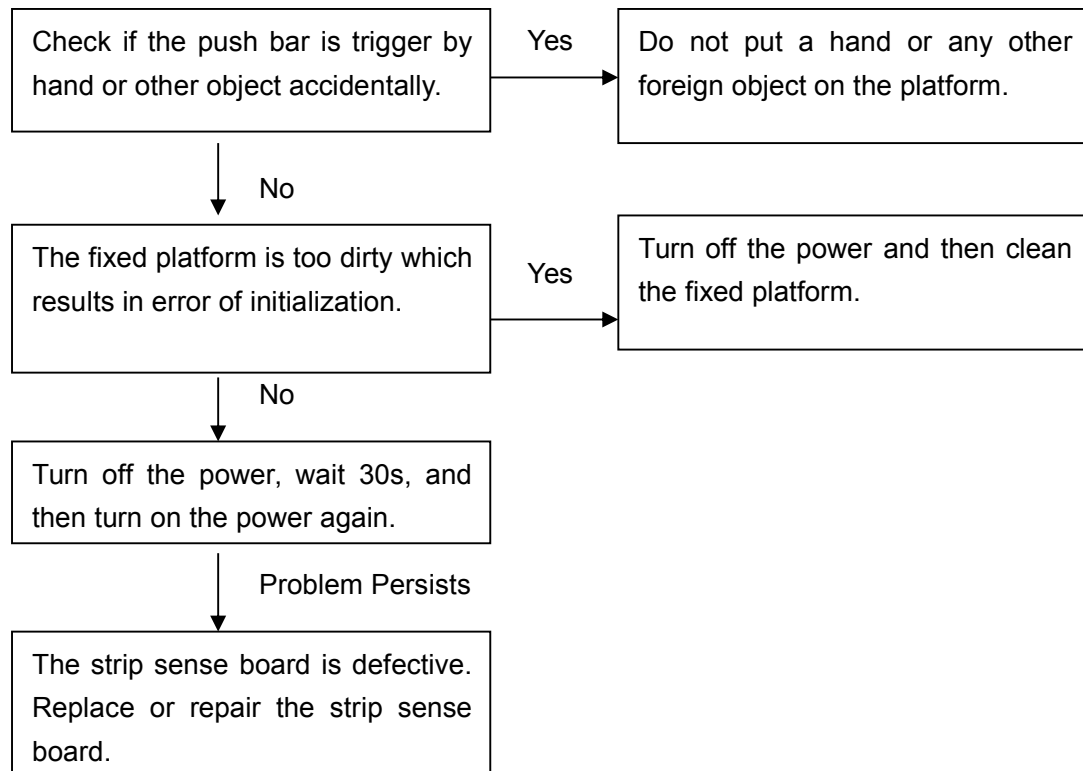


### 3.4 Push bar doesn't move right when a strip is put on the platform.

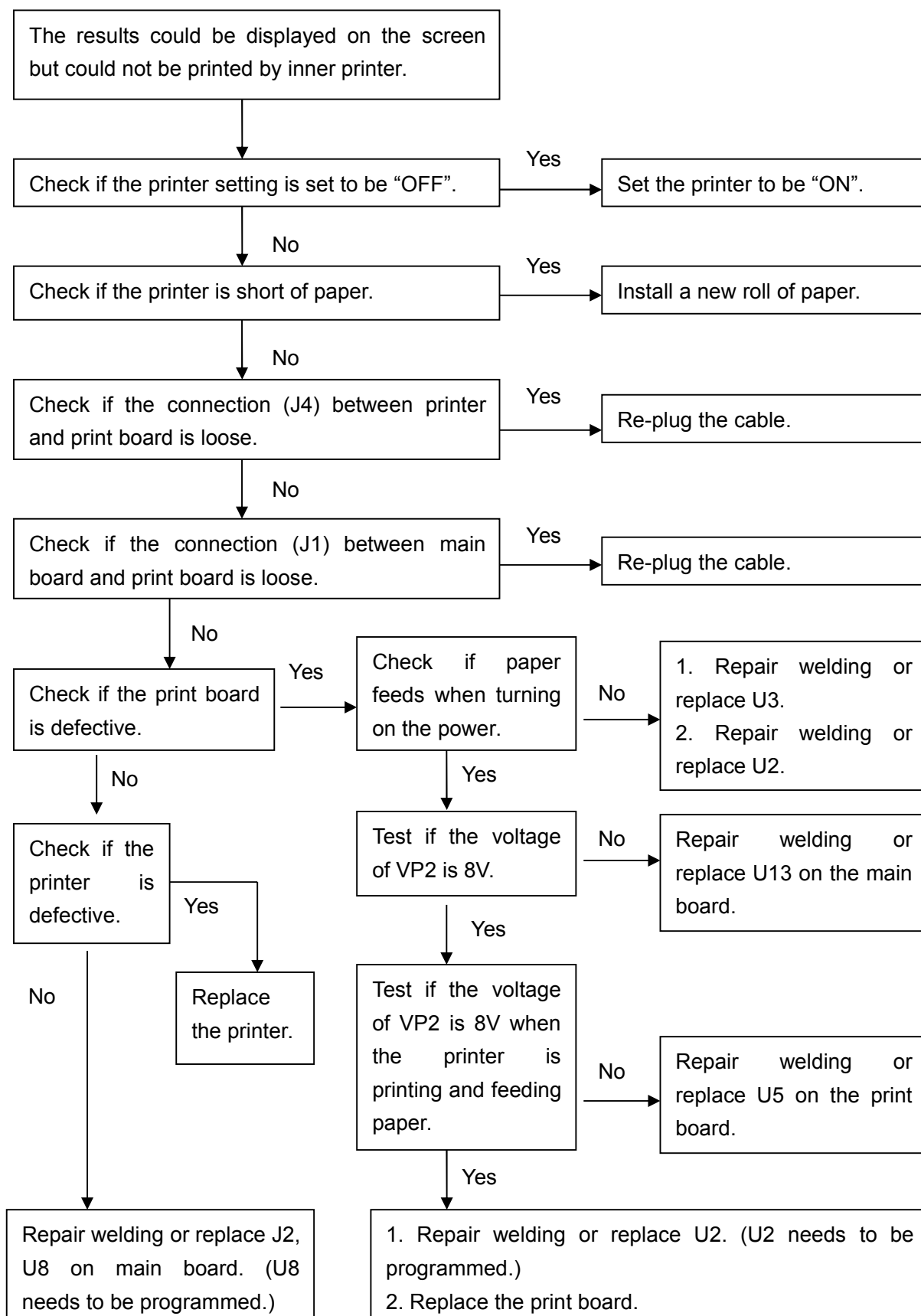




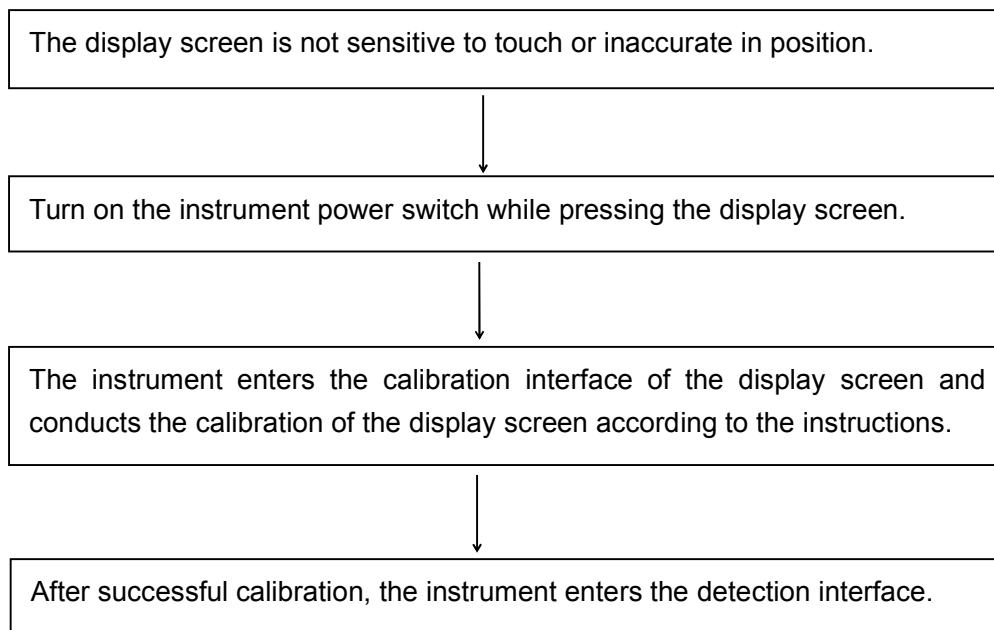
### 3.5 Push bar moves when there is no strip on the platform.



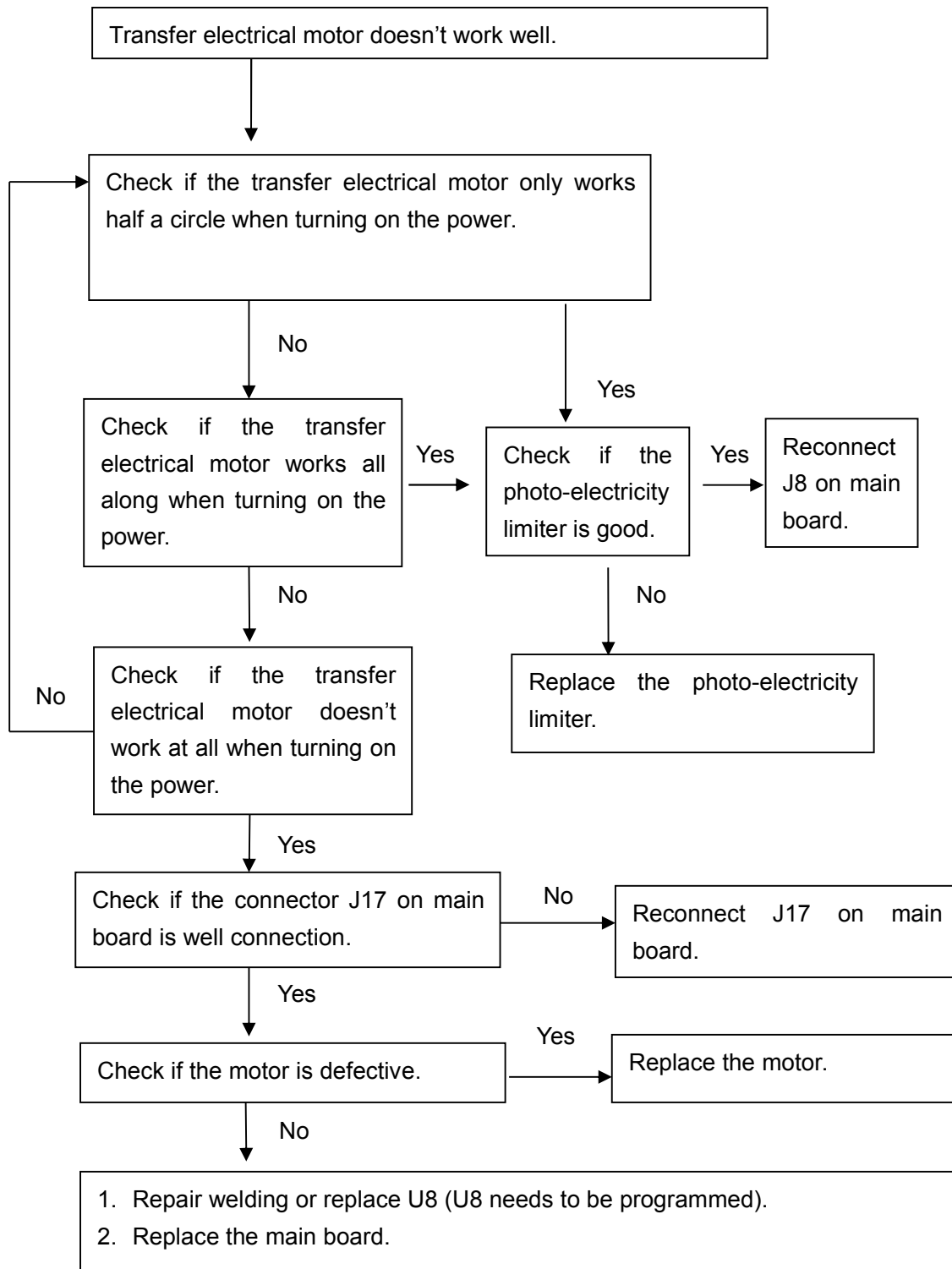
### 3.6 The results could not be printed by inner printer.



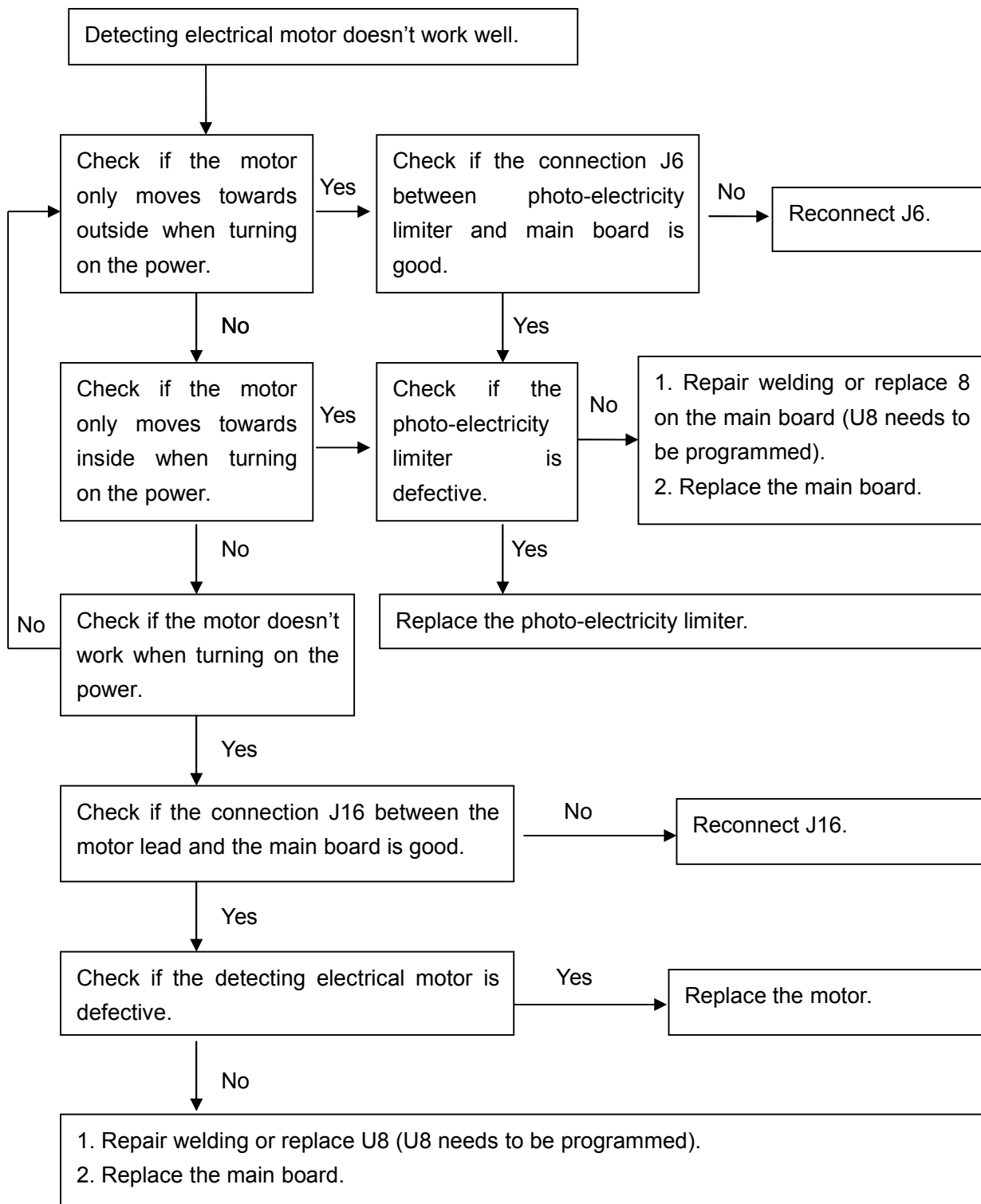
### 3.7 The display screen is not sensitive to touch or inaccurate in position.



### 3.8 Transfer electrical motor doesn't work well.



### 3.9 Detecting electrical motor doesn't work well.

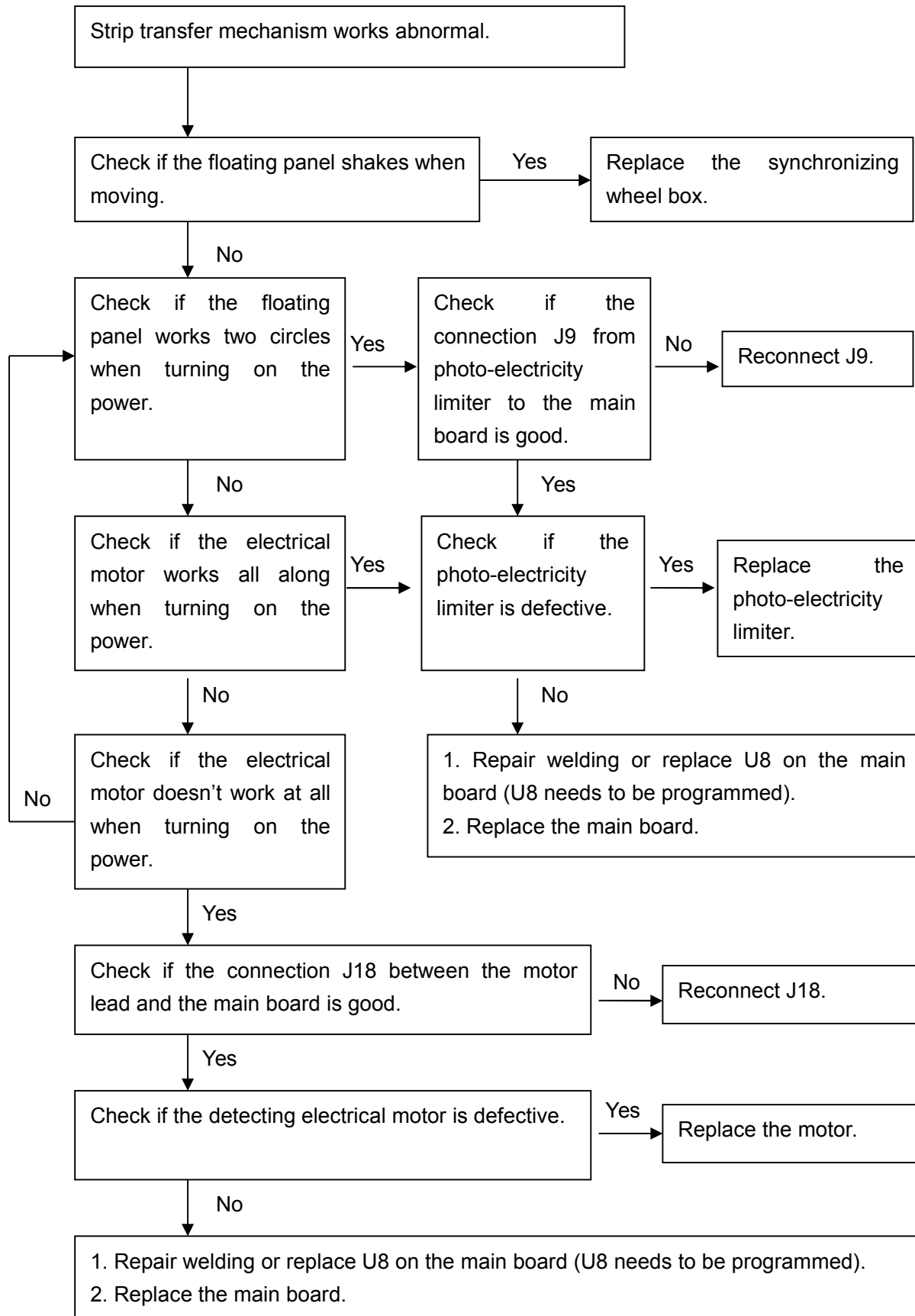


#### NOTE:

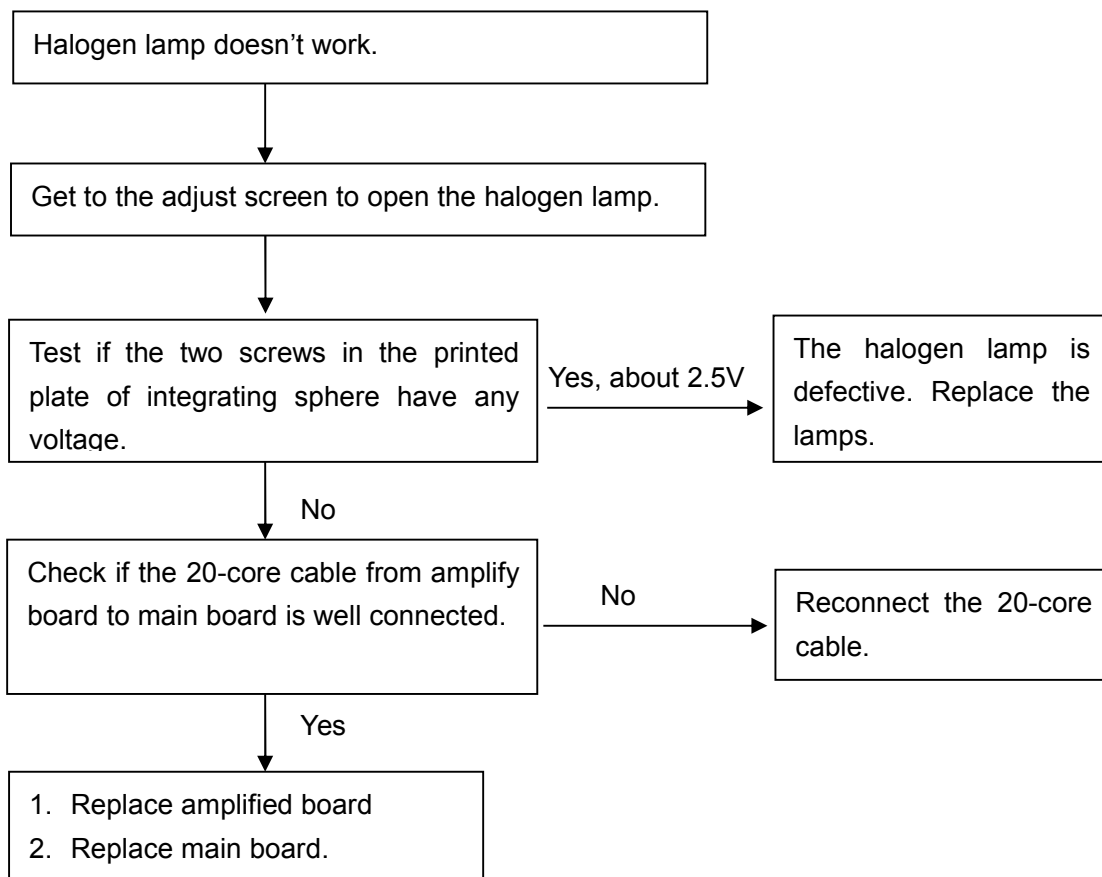
**The detecting electrical motor will be blocked sometimes for new installed instruments, because the motor is blocked by the photo-electricity limiter most of the time.**



### 3.10 Strip transfer mechanism works abnormal.



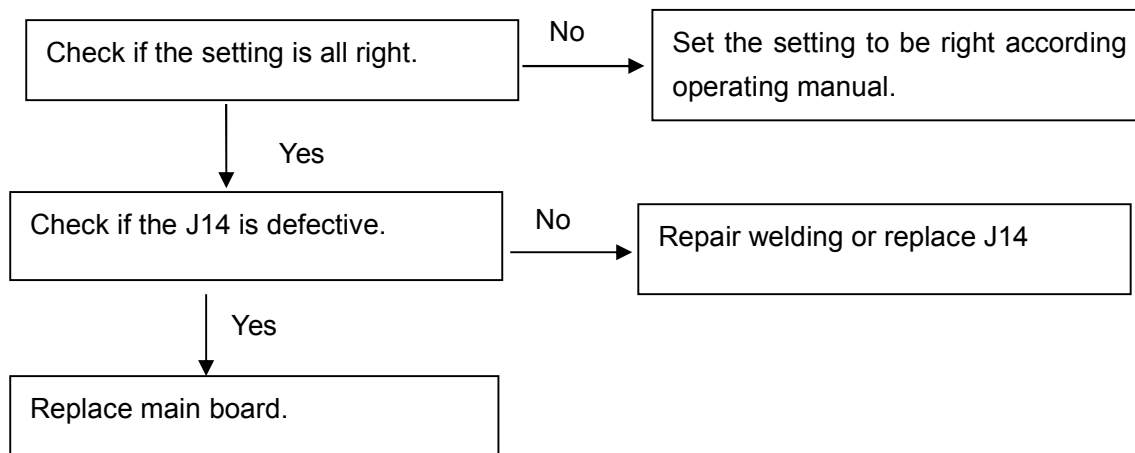
### 3.11 Halogen lamp doesn' t work (The light value is weak).



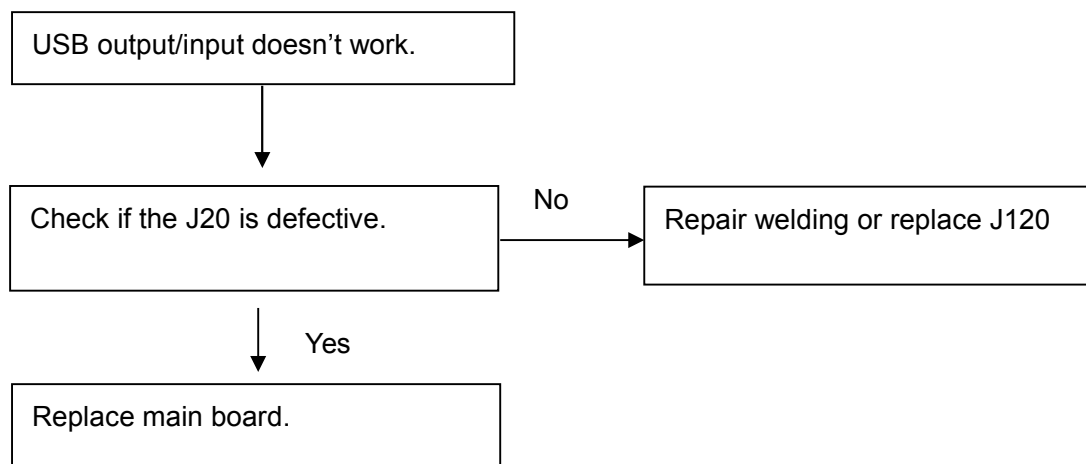
#### NOTE:

The light value needs to be readjusted after replacing the halogen lamp.

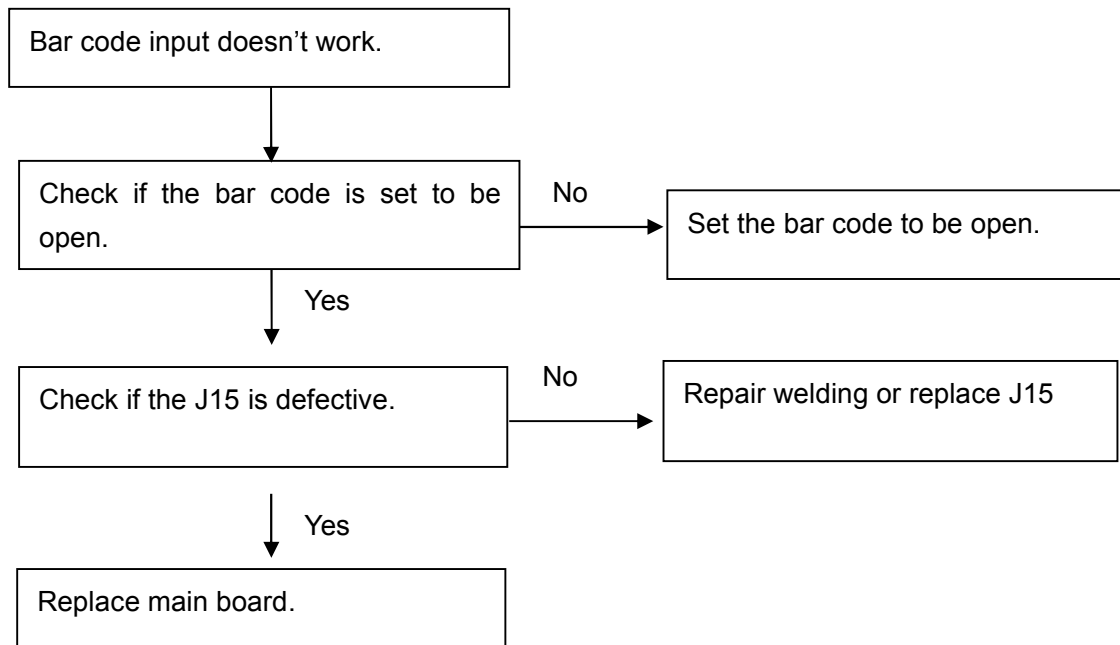
### 3.12 Serial port output/input doesn't work.



### 3.13 USB output/input doesn't work.



### 3.14 Bar code input doesn't work.



### 3.15 LAN terminal output doesn't work.

