

e-PLUS Lab5 Language Lab System



Powerful & Multiple features

e-Plus Lab 5, with full-functional features, includes **instant multimedia signal broadcasting**, **oral interpretation** drilling, group discussion, digital paperless online exam and abundant database for **self-study access**, etc. It is certainly the must-have tool to acquire language enjoyably and efficiently



Live monitoring

Real-time overview of entire class.
Observe students performance and give instruction in time.



Simultaneous Interpretation

Up to 14 channels for different interpreters do demo.
Students select channels to listen freely.



Exam

Various types of exam with smart analyzer system
Enhance learning, making effective progress & efficient result.



Oral recording

Powerful voice (sound) processing of pure software structure.
Provide high quality language teaching & learning environment.



Cloud Learning

Access open materials at home or online to review or practice uploading by teachers.
Decrease the learning environment limitation.



E-PLUS Lab 5 Interface

The screenshot displays the E-PLUS Lab 5 Interface, a software-based language lab environment. The interface is organized into several key sections:

- Main toolbar:** Located at the top, it includes icons for Broadcast, Teaching, Dialogue, Model St., Web VOD, GRP Disc., Send File, Ora Pract., St. Demo., and Auto Recte.
- 24 channels Multimedia player:** A vertical stack of 24 channels (CH1 to CH24) on the right side, each with playback controls and a progress bar.
- Student layout:** A central grid of 25 student positions (A1 to A5 in the bottom row, F1 to F5 in the top row). The bottom row (A1-A5) shows avatars for WINNIE-NB, JJJ, ALAN-NB, and ALAN-NB.
- Class Management:** A section at the bottom left with icons for user management, chat, and other classroom functions.
- Recorder:** A section at the bottom right with a large red record button and other recording controls.

The interface is designed to be user-friendly and powerful, supporting a variety of teaching functions in a language lab setting.

software based with powerful functions & user friendly interface
to improve teaching environment in language labs

Friendly Interface

Customized Interface Teacher can select often-used buttons to be exclusive function bar for themselves.



Multi-language Interfaces

- Support different languages up to 18 types enables to facilitates alternative languages learning and mastering.



Multi channel broadcasting

Teacher can load multi-media files and broadcast to all/partial students,
Up to 24 channels, each channel can distribute to different students simultaneously.



Web VOD

- Teacher uploads teaching materials to the cloud. Uploaded materials can be used during the class or for students watching freely.

Oral training interaction



Dialogue

- Interactive oral dialogue between teacher and students.



GRP. Disc.

- Grouping students and discussing through microphones. Teacher can choose to join the group.



OralPract.

- By replay function, students can understand their pronunciation & learning condition.



St. Demo.

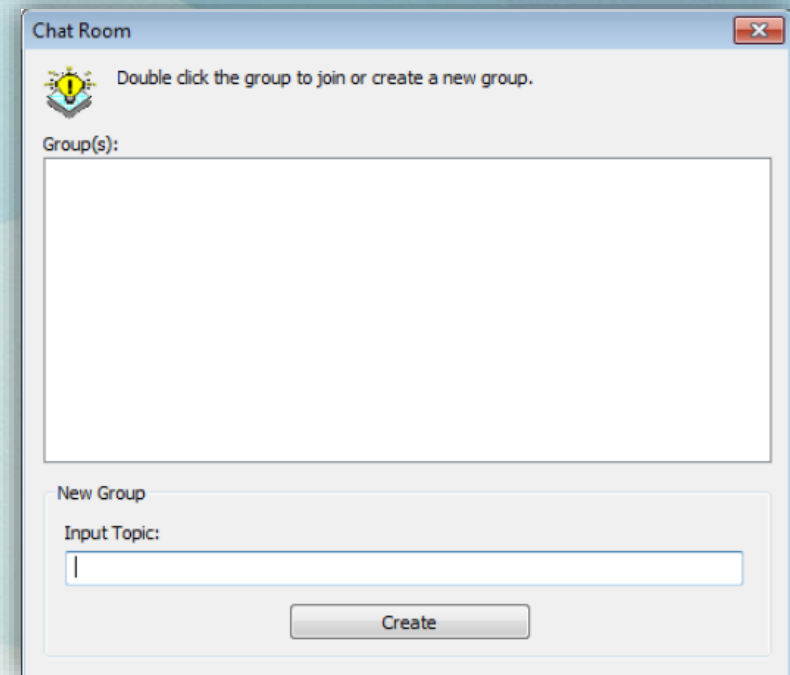
- Teacher demonstrate appointed students voice to whole class.



Auto Recite

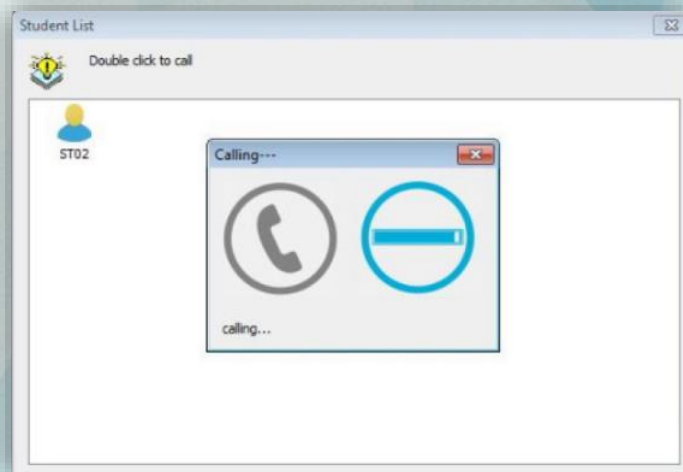
- Teacher can input material for students follow to read.

Chat room



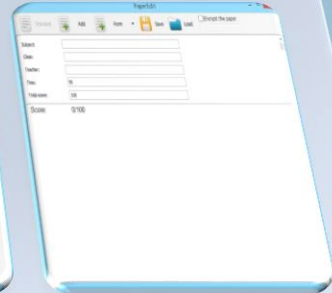
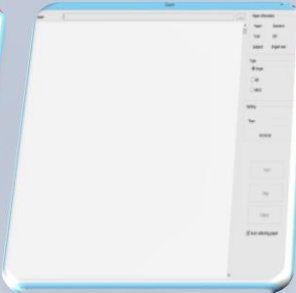
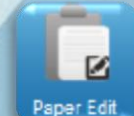
- Students can set topics by themselves and discuss.

Online Call



- Students can call each other for oral practicing & discussing.

Exam & exam analysis



Teacher can understand students' learning condition by doing quiz, the data can be statistically analyzed.

Select paper type to do the exam
Single / AB / ABCD paper

Source from teacher MIC or multimedia files
Oral record students voice and save files relatively.

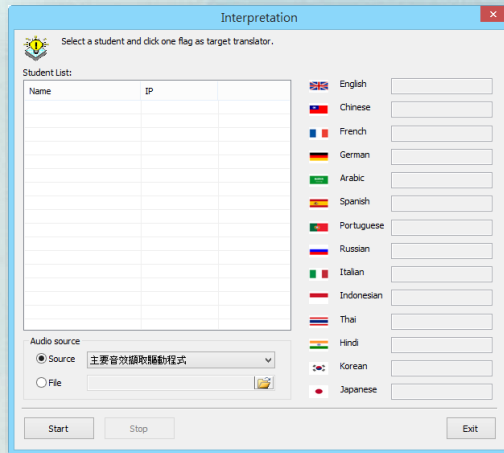
Teacher able to check the score & accuracy of students. Analyze exam statistics and export as excel file.

Edit exam paper for the exam function or send to students for self-exam.



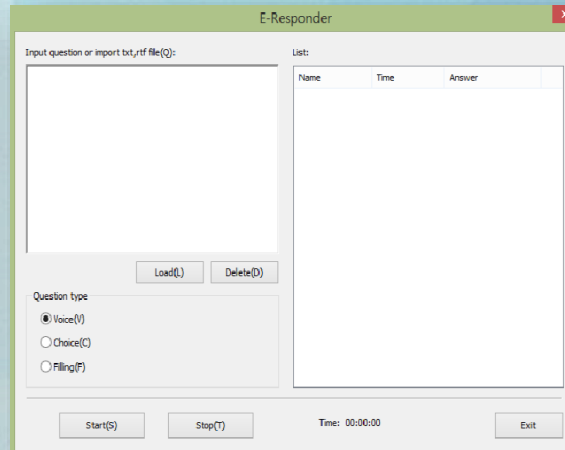
Advance Class Management

Simultaneous Interpretation



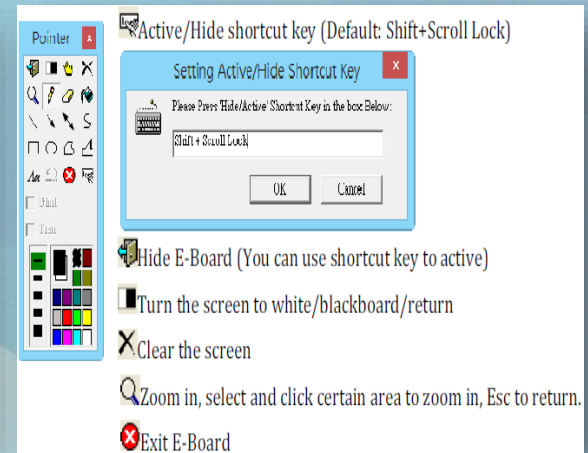
14 languages for 1~14 interpreters to practice oral interpretation simultaneously & translate to other students. The channel can be freely selected & listened.

E-Responder



Teacher can edit different questions for students, such as voice, choice, filling. Student select answer and click to submit.

E-Board

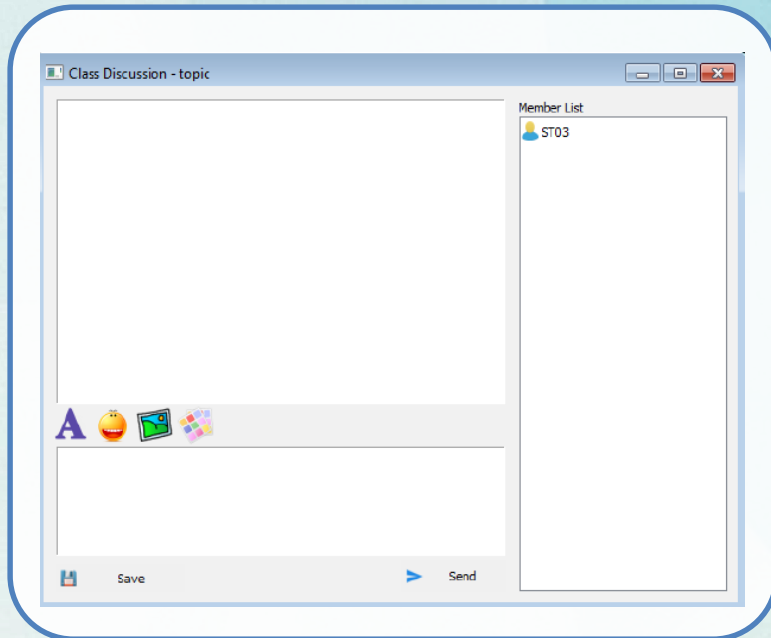


Marking pictures or documents with colorful marker. Teacher give instruction easily.



Advance Class Management

Discussion



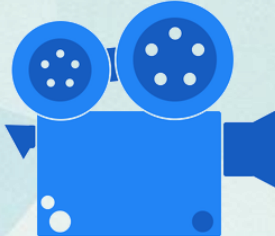
Teacher can discuss with students directly by texting, able to let appointed students hear teacher's voice.

Optional: Course Recorder

(Integrate with extra capture card)






Able to record **screen + MIC**
or
Screen + PC audio

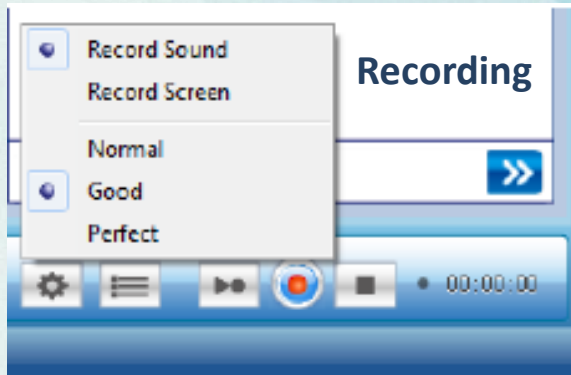


- 
1. Adjust recorder windows position on
 2. Review the recording
 3. Live broadcast button
 4. Recording button
 5. Settings

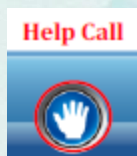
Hot key function



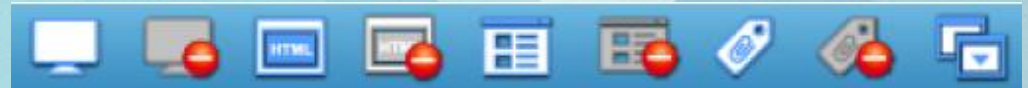
	Roll Call
	Class Management
	Allow/block sending message
	Allow/block help call
	Clear help call












Students can record their voices or screen



When students have any questions,
press help call to let teacher notices them



	Exit Darkening
	Darken Screen
	Allow explore Internet
	Forbid explore Internet
	Authorize student to execute program
	Block Student executing program
	Allow using USB
	Block using USB
	<p>Student windows mode</p> <ul style="list-style-type: none"> Windows desktop: Will hide Lab5 program on student PC, the sub-function bar will on the top of the window Normal display: Normal mode Keep top: Keep student Lab5 program on the top of the window Hide completely: Hide student Lab5 program <div> <input type="checkbox"/> Windows Desktop <input checked="" type="checkbox"/> Normal display <input type="checkbox"/> Keep top <input type="checkbox"/> Hide completely </div>

Installation Requirement

	Teacher PC (Recommend)	Student PC (Recommend)
CPU	Intel Core i5	Intel Core i3
MEMORY	2G or above	1G or above
HD	500G or above	250G or above
AUDIO	16-Bit Audio Card	16-Bit Audio Card
LAN	100/1000 Mbps	100/1000 Mbps
OS	Windows 7 / 8 / 10	Windows 7 / 8 / 10

please make sure teacher & student PCs have installed

Microsoft windows OS, Microsoft Windows 7/8/10 is recommended.

Installation project

