

# GENORAY MAKES THE INVISIBLE VISIBLE !



**GENORAY Co.,Ltd.**  
512, 560, Dunchon-daero, Jungwon-gu, Seongnam-si,  
Gyeonggi-do, 13230, Korea  
Tel. +82-31-627-3900 Fax. +82-31-737-8016  
genoray@genoray.com

**Genoray America Inc.**  
147 E. Bristol Lane Orange, CA 92865 USA  
Tel. +1-855-436-6729 Fax. +1-714-786-8919  
inquiry@genorayamerica.com  
www.genorayamerica.com

**Genoray EU GmbH**  
Westhafenstr. 1 13353 Berlin, Germany  
Tel. +49-30-509-694-98 Fax. +49-30-530-198-08  
smhan@genoray.com

**Genoray Japan**  
2F Ishibashi-Bldg, 1-4-15 Shinyokohama,  
Kouhoku-ku, Yokohama-city, Kanagawa, 222-0033 Japan  
Tel. + 81-45-620-4971 Fax. +81-45-620-4972  
Info@genorayjapan.co.jp www.genorayjapan.co.jp

## GENORAY RELIABLE SERVICE

SCD (Smart Connected Device)  
is a program that automatically transmits error-related  
contents (cause, area, etc.) from a set PC program  
to a LISA server. It is a system that the CS team analyze  
the problem and take action. We want to respond  
promptly to the problems we encounter and provide  
the best possible service.



\* The specifications above can be changed to improve performance without notice.

## OSCAR 15 OSCAR prime

A new level of clarity and power



Powerful, Light, Versatile, Performance C-Arm !  
in DIGITAL IMAGING





## GENORAY MAKES THE INVISIBLE VISIBLE

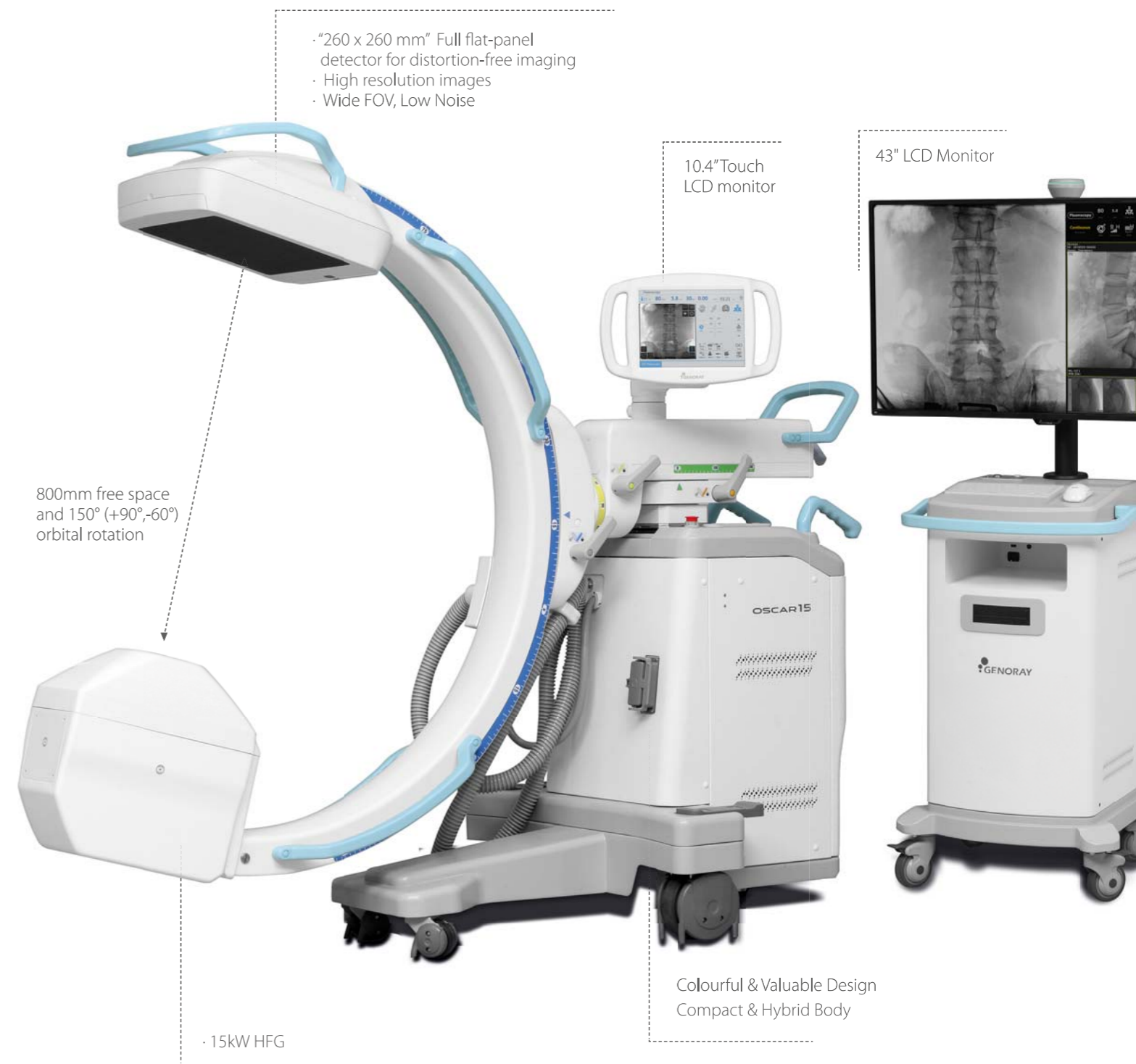
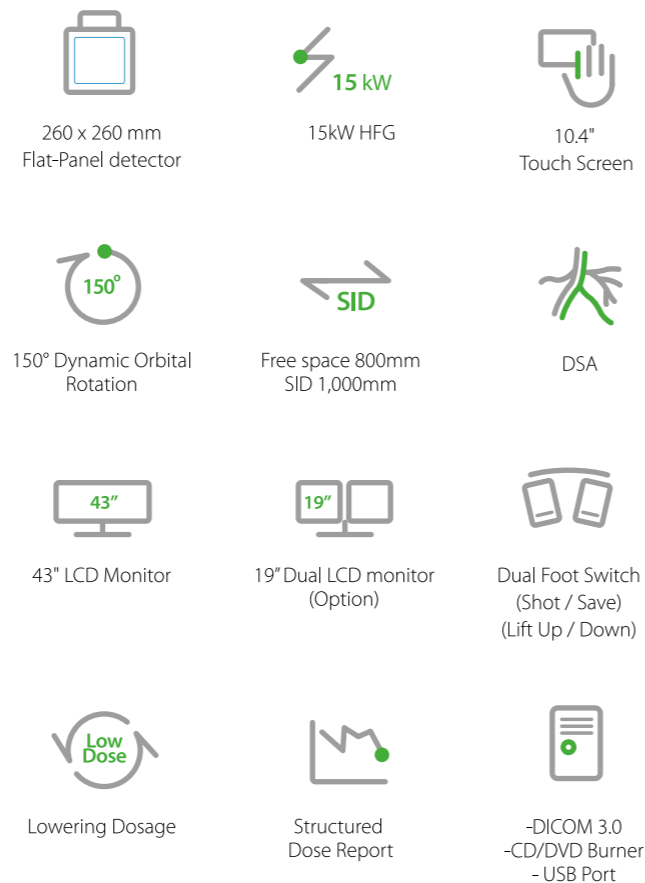
With the incessant challenge, and the enthusiastic passion, we, Genoray is the company committed to making contribution to the happiness and the healthy life of human being through the X-Ray technology, a valuable light which saves lives.

- Developed OSCAR 15, Acquired CE certificate & FDA(K172180)
- Developed OSCAR Prime
- 1M CCD camera is equipped on all C-Arms  
Acquired CE certificate for ZEN-2090Pro  
ZEN-2090Pro FDA 510(K091918)  
Developed ZEN-7000
- Developed C-Arm with 1M pixel camera  
Developed economical C-Arm (ZEN-2060)
- Developed High Performance C-Arm (ZEN-3090)  
Acquired CE certificate for ZEN-3090
- Selected as Superior Technology Company  
Selected as INOBIZ Company, Awarded export prize  
Approved KGMP Quality Management Standard Conformity  
Awarded with "20 Million Dollars Trophy" from Korea International  
Awarded Design&Tech innovation grand prize

Powered by and enthusiastic passion for X-Ray technology, Genoray stands up to the incessant challenges of constant leading a healthy lify by committing to the improvement of our products.

# OSCAR 15

The OSCAR 15 is a culmination of several years worth of developmental experience from Genoray. With CMOS imaging excellence & 15kW HFG you diagnosis need will be met while improving your productivity especially DSA(Digital Subtraction Angiography).



## Distinguishing Features

1

### FLAT-PANEL

- 260 x 260 mm
- CMOS Type

2

### HFG

- 15kW HFG

3

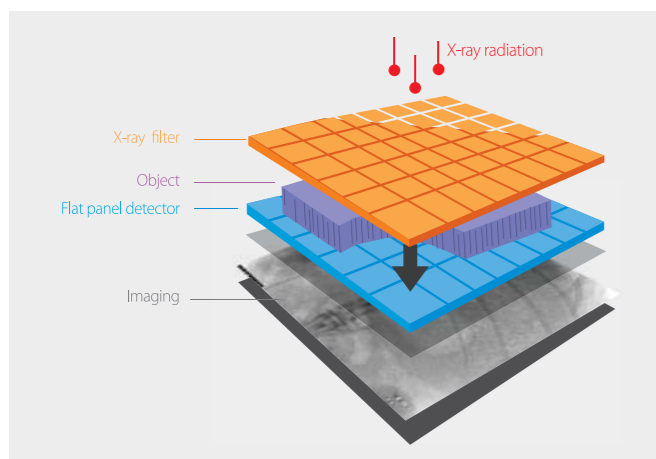
### DSA

- Road map
- Land marking
- Pixel shift

As a surgeon you need the skills and dedication to perform an increasing number of challenging interventions. Crisp, clear images are also crucial, whether you are performing open surgery or advanced minimally invasive procedures.

# EXCEPTIONAL IMAGE QUALITY

With an optimal flat panel detector size of 26 x 26cm you won't miss a thing with its high quality resolution. It makes accurate diagnosis in a variety of departments especially DSA



## SMART IMAGE PROCESSING

### HIGH SPEED READOUT, HIGH DEFINITION

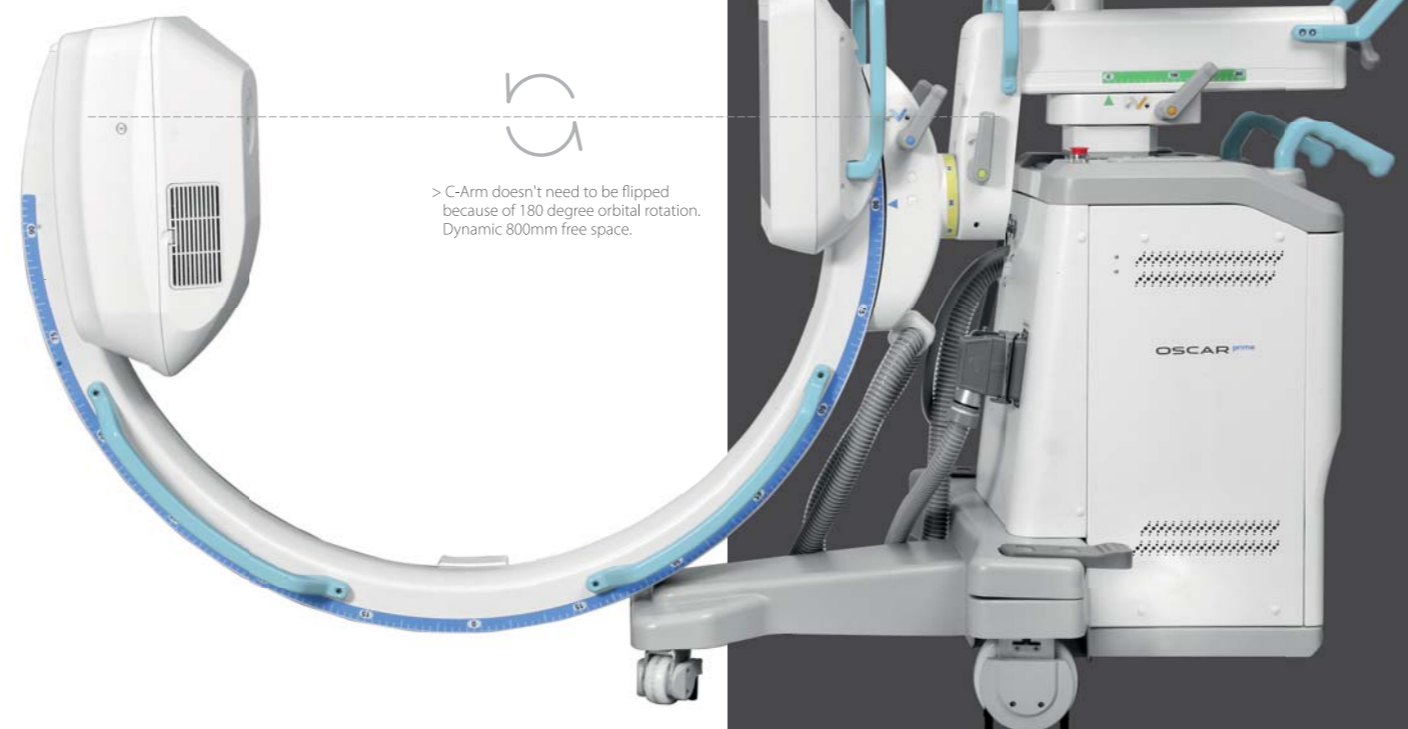
Flat panel detector doesn't miss a beat!

### WIDE FOV, LOW NOISE, LOW DOSE, HIGH CONTRAST RATE

Your needs will be met while improving your productivity.



FOV (Field of View) 260 x 260 mm



## X-RAY DOSE MANAGEMENT

### LOW DOSE MODE

Low dose mode is designed to acquire reasonable image to diagnose the patient with minimum dosage.

### SMART REVIEW

Review and store image maximum 10 seconds before last image.

### EDGE ENHANCEMENT

For user to get more accurate diagnosis result enhancing edge of image.



### METAL CORRECTION

To prevent over-dose radiation or low quality image caused by metal interruption on field of view.



### DOSE STRUCTURED REPORT

Dose SR enables efficient radiology workflow, improves patient care, and enhances the radiology working conditions.

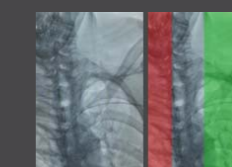
### MOTION CORRECTION

This function detects the movement and reduce the after image while exposing X-ray.



### VIRTUAL COLLIMATOR

The virtual collimator allows for the selection of your desired field of view, while reducing the amount of radiation exposure by limiting the X-Ray beam.



### AUTO COLLIMATION

Prevention of unnecessary X-Ray exposure by focusing on the area of interest while automatically collimating the remaining areas.



### IMAGE CHAIN TECHNOLOGY

X-ray for acquisition of low-dose / high-quality medical images Image chain technology considering interaction with human body, detector, image processing algorithm etc.

# POWERFUL SOFTWARE ZENIS

A total solution from acquisition, storage, management, communication to print out  
Provide convenient environment from user-centric interface /  
Diagnosis and confirm from recognizable simple icons /  
Convenience of database management



- Convenient diagnostic functions for easy patient / image management
- Accurate diagnostic tools
- Improve the efficiency of your hospital management
- Perfect compatibility with all PACS
- A must have for a digitally equipped hospital
- Convenient communication and management for your customers

## IMAGE MANAGEMENT

Invert, rotation, zoom In/out, magnify glass and etc

## MEASUREMENT & ANNOTATION

Measurement of length, angle, and Input and storage of line, arrow, characters

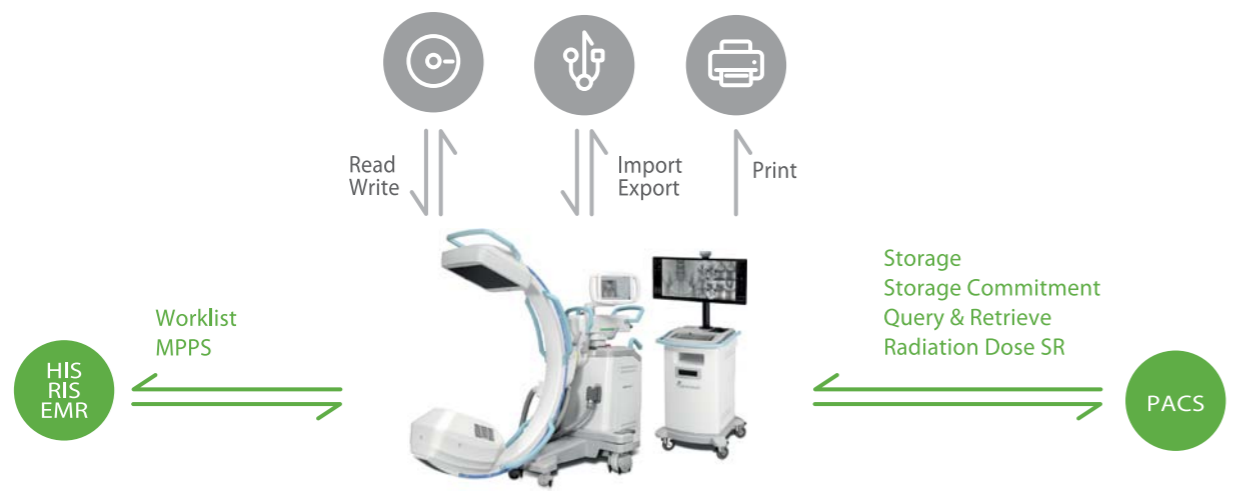
## DICOM 3.0

Storage service, worklist service

## RECOMMENDED SYSTEM REQUIREMENTS FOR ZENIS

## DATABASE MANAGEMENT IN HIPAA APPROVED FORMAT

## DICOM SUPPORT



## DSA [DIGITAL SUBTRACTION ANGIOGRAPHY]

Angiography option utilizes repeating stored videos while subtracting unwanted artifacts

### NATIVE DSA

Pairing fluoroscopy with contrast media to display the basic angiography views

### MOTION MATCHING

Selects the proper mask to apply and remove artifacts made by a patient's movement or breathing

### POST-PROCESSING

processing: Improvement of the processed image after the DSA procedure

### LANDMARKING / BRIGHTNESS / CONTRAST

After setting the position for a vessel, the subject can be placed back to their original position by using the shift function to compensate for any movement. Allows for various functions that assist with accurately inserting a catheter.

### PEAK OPACIFICATION

Ability to diagnose a blood vessel with only a small amount of contrast media

### ROAD MAPPING, LAND MARK, PEAK OPENCIFICATION AND MOTION DETECTION

After setting a position for a vessel, the subject can be moved back to their original place by using the shift function to compensate for any movement. Provides various functions that helps accurately to insert a guide wire, catheter. is compatible with the hybrid operating room.

### AUTO ROADMAP MASK

Obtain blood vessel type information while only using a small amount of contrast media

### MANUAL ROADMAP MASK

Roadmap your vessels using a prevoiusly taken DSA image

### ROADMAP PIXEL SHIFT

Re-position the roadmap mask by shifting the pixels to the proper position

## APPLICATIONS

- General Surgery
- Office based Vascular Center
- Pain Management
- Orthopdics
- Urology
- Cardiac Procedures
- Hybrid OR
- Neuro & Spine Surgery
- Pain Management
- Orthopedic Surgery
- Trauma Procedure
- Urology Procedure
- Cardiac Surgery
- Peripheral Artery Diseases
- Vascular Surgery

