

## 1.2 Information and use of the instrument

The Histo-Pro 200 is an automatic tissue processor, designed for Pathology and research laboratories.

This recently-designed instrument from Histo-Line Laboratories combines the simplicity of use by operators with maximum safety and reliability.

Clarity and ease of access to the controls can be found in front of the instrument, equipped with a large color touch screen.

It is equipped with intelligent and easy to use software, with an alarm system as a reminder or failure of the instrument.

S7 Multiple system of sample protection.

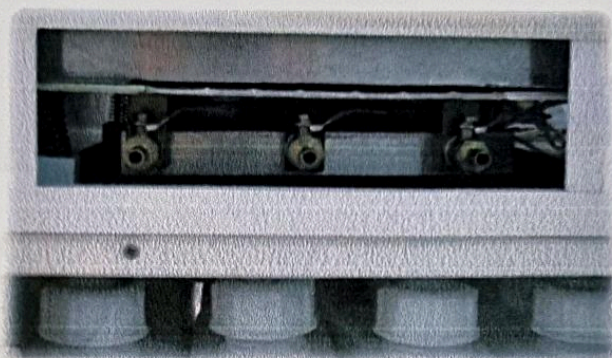
S12 Histo-Pro 200 processes all biological tissues, with both standard protocols and protocols using not toxic reagents like Diaphane (xylene substitute and d-lemonene). For both reagents the processor is designed with optimized protocols and adaptable to all circumstances.

S10 The software stores all the necessary protocols, with the option to set: management usage of the reagent, the processing time, the operating temperature, agitation (stirring) time.



4  
Conform extras manual technique pag. 4





*S2* *S3* The operator can set the different programs, diversified by station, time and temperature; there are also special programs for the cleaning of retort after paraffin steps.

In front of the unit, behind a small flap retractable, there are the hose connections for useful and simple paraffin drainage.

The basket provided the possibility of having different load quantities: ~ 70, ~ 140, ~ 200 cassettes with use controlled amounts of reagent according to the load.

*S6* 14" color touch screen solvents resistance, with a graphical representation of the management process of the instrument, through intuitive software.



## 2 Technical features

### 1.3 Tissue processor capacity

- S11 → S1 → S4
- Up to 20 fully settable programs with 10 reagent and 3 paraffin bath.
  - Time for each program: from 0 to 99 hours and 59 minutes.
  - Up to 200 cassettes can be processed simultaneously.
  - Wax clean program**
    - 10 tanks for reagents
    - 3 baths for wax paraffin
    - 2 tanks with cleaning solution
    - 2 condensation tanks
  - 1 carbon filter bottle





## 2. Technical features

### 2.1 Technical Data

- Certification: CE, IVD
- Protection class: I
- Fuses type Fst: 10 A
- Pollution class: 2
- Over-voltage Category II Installation
- Power supply: 220V ~ 50Hz or 110V ~ 60Hz
- Relative humidity: 10 to 80%
- Maximum power consumption: 1500 W / A

### 2.2 Paraffin stations

514 }

- Number of paraffin baths: 3
- Volume (in liters): 4.0 lt. / Each tank
- Melting time: Approx. 3 hours
- Temperature: 55° - 65 °C
- Temperature accuracy: + 1 °C

### 2.3 Process chamber

- Capacity: approx. 200 cassettes, contained in a stainless steel drum to 3 floors with two separators and closing top cover
- Reagent volume: 6 Lt
- Temperature (paraffin): 50°C - 65°C
- Temperature (reagents): ambient or 35°C
- Temperature (cleaning reagents): 50°C - 65°C
- Temperature accuracy: + 1°C
- Filling time: up to 5 min
- Drain time: up to 5 min
- Impregnation vacuum: -70 kPa (g)
- Impregnation pressure: 35 kPa (g)
- Fill vacuum: -70 kPa (g)
- Drain pressure: 35 kPa (g)